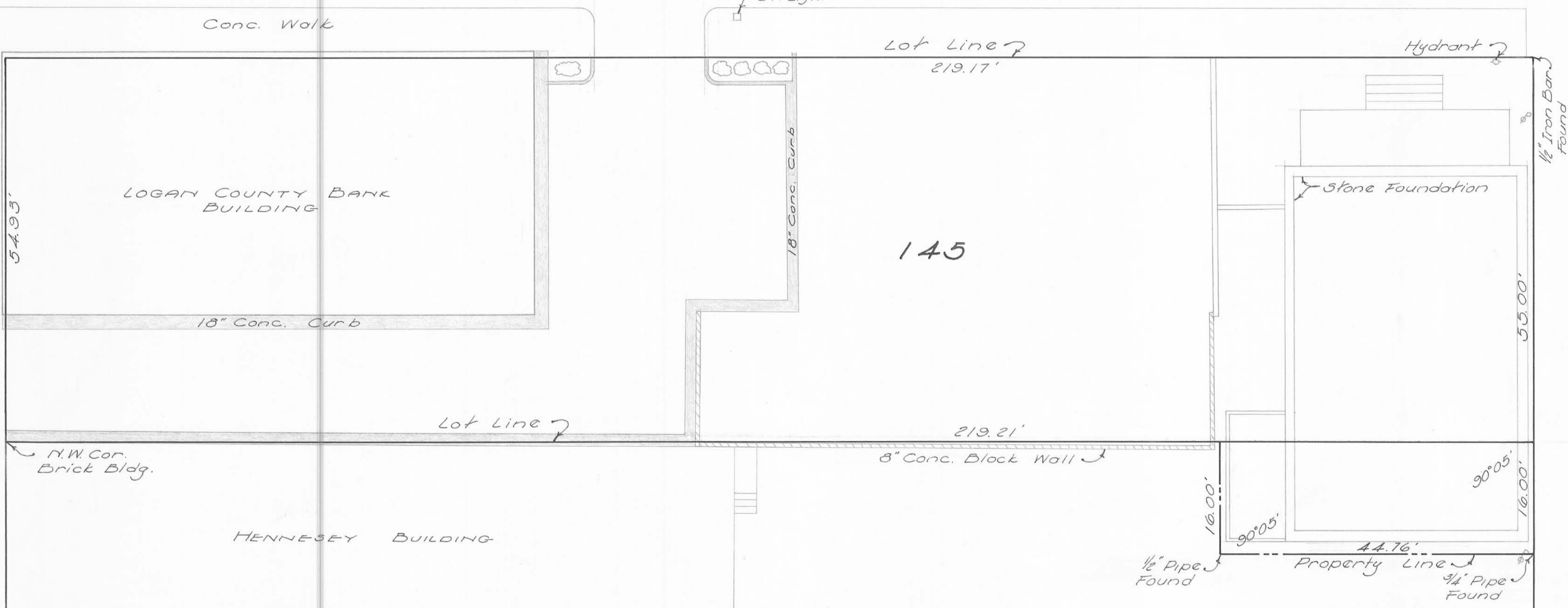


CHILLICOTHE ST. 60'

90°04'

MAIN ST. 80'



145

SURVEY OF  
 LOT 145 - 146 PART  
 BELLEFONTAINE, OHIO  
 FOR  
 THE LOGAN COUNTY BANK  
 AUGUST 9, 1962  
 SCALE 1" = 10'

*Dan L. Dodson*  
 Dan L. Dodson  
 Reg. Surveyor 4270  
 Bellefontaine, Ohio