

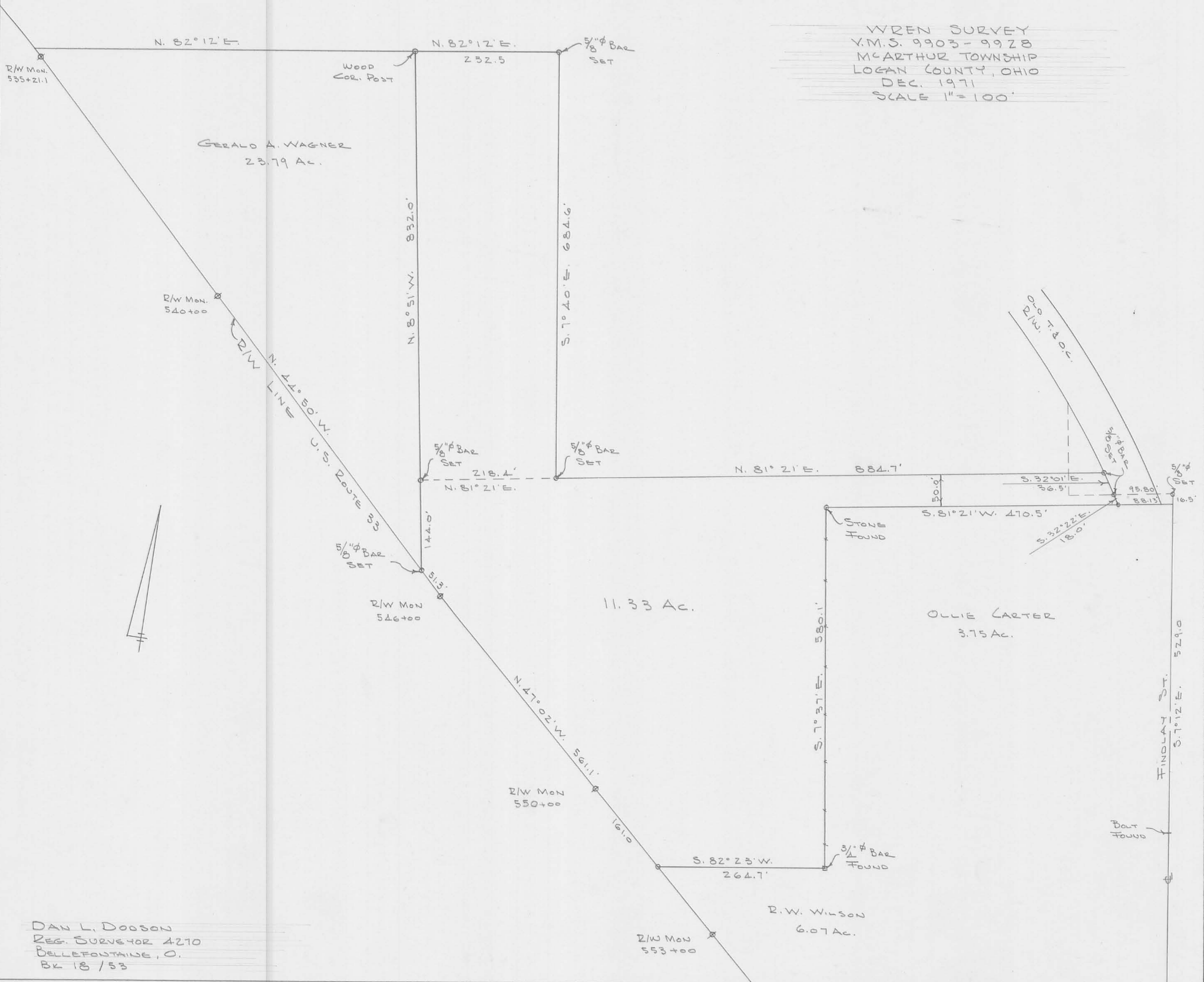
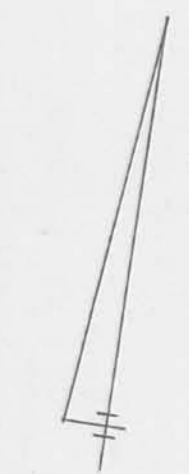
WREN SURVEY
 Y.M.S. 9903-9928
 McARTHUR TOWNSHIP
 LOGAN COUNTY, OHIO
 DEC. 1971
 SCALE 1" = 100'

GERALD A. WAGNER
 23.79 Ac.

11.33 Ac.

OLLIE CARTER
 3.75 Ac.

R.W. WILSON
 6.07 Ac.



DAN L. DOBSON
 REG. SURVEYOR 4270
 BELLEFONTAINE, O.
 BK 18/53