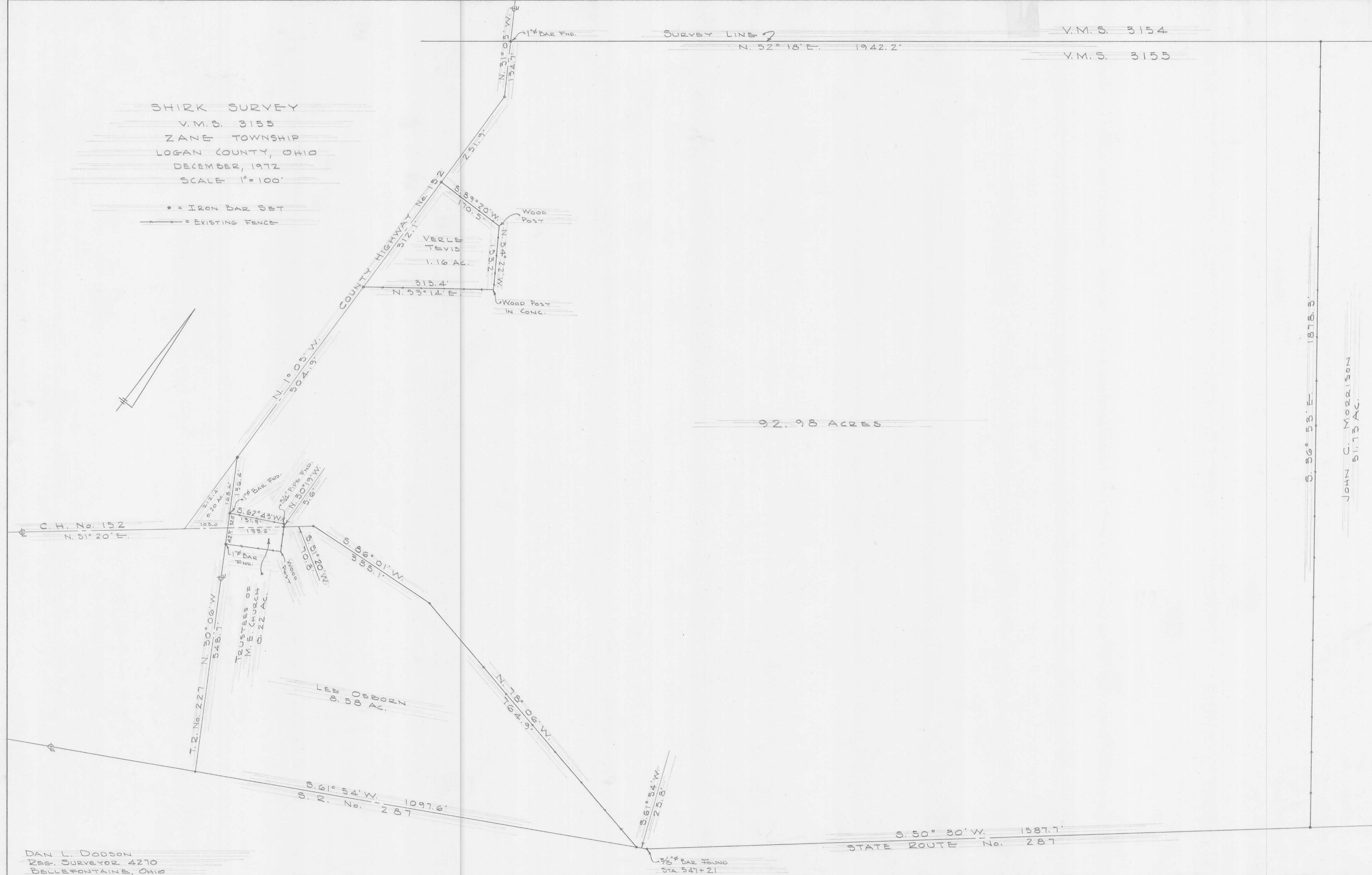


SHIRK SURVEY  
 V.M.S. 3155  
 ZANE TOWNSHIP  
 LOGAN COUNTY, OHIO  
 DECEMBER, 1972  
 SCALE 1"=100'

• = IRON BAR SET  
 --- = EXISTING FENCE

SURVEY LINE 2  
 N. 52° 18' E. 1942.2'

V.M.S. 3154  
 V.M.S. 3155



92.98 ACRES

JOHN C. MORRISON  
 51.73 AC.

DAN L. DODSON  
 REG. SURVEYOR 4270  
 BELLEFONTAINE, OHIO