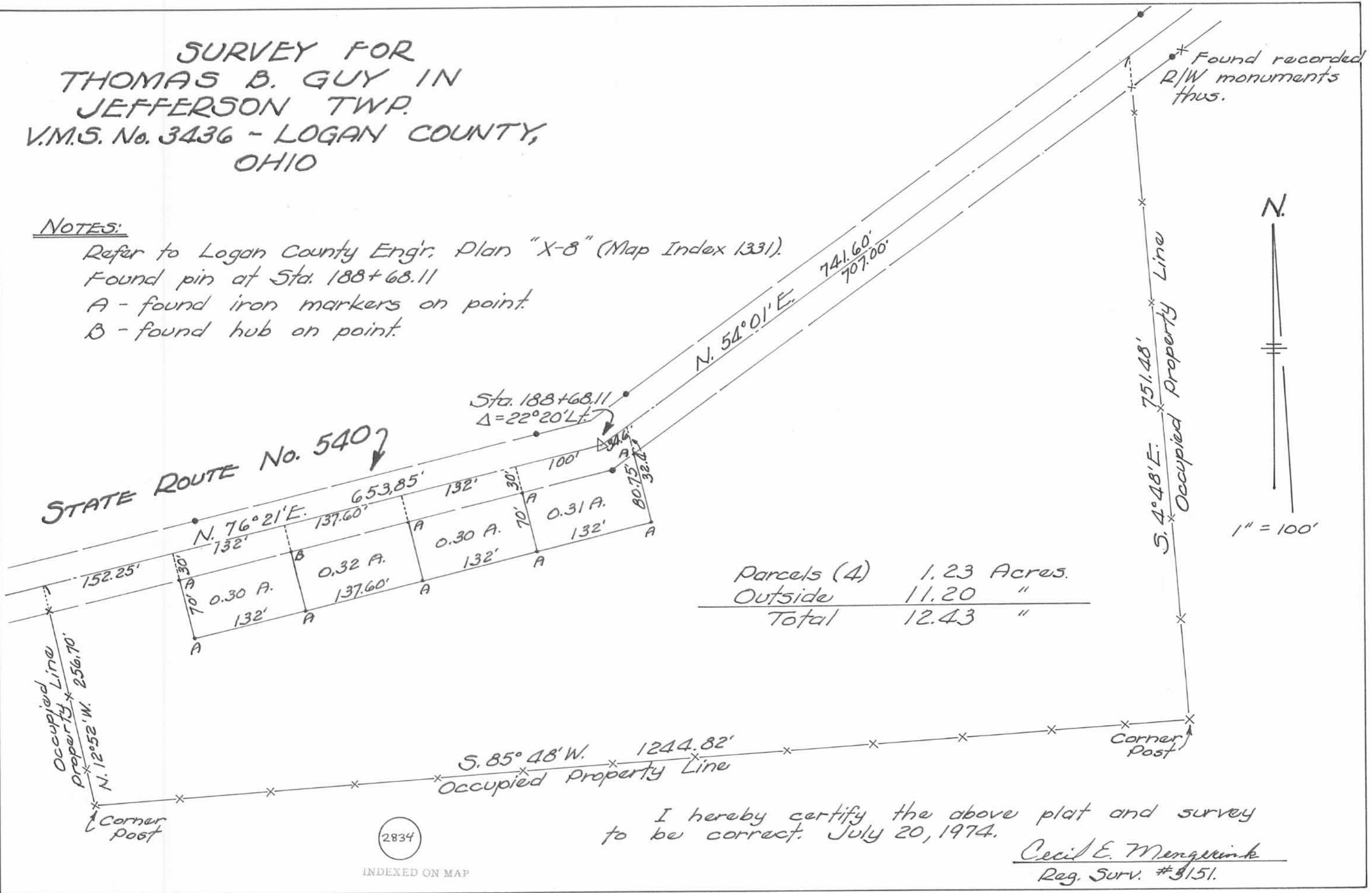


**SURVEY FOR  
THOMAS B. GUY IN  
JEFFERSON TWP.  
V.M.S. No. 3436 - LOGAN COUNTY,  
OHIO**

NOTES:

Refer to Logan County Engr. Plan "X-8" (Map Index 1331).  
 Found pin at Sta. 188+68.11  
 A - found iron markers on point.  
 B - found hub on point.



2834

INDEXED ON MAP

I hereby certify the above plat and survey to be correct. July 20, 1974.  
Cecil E. Menzies  
 Reg. Surv. #8151.