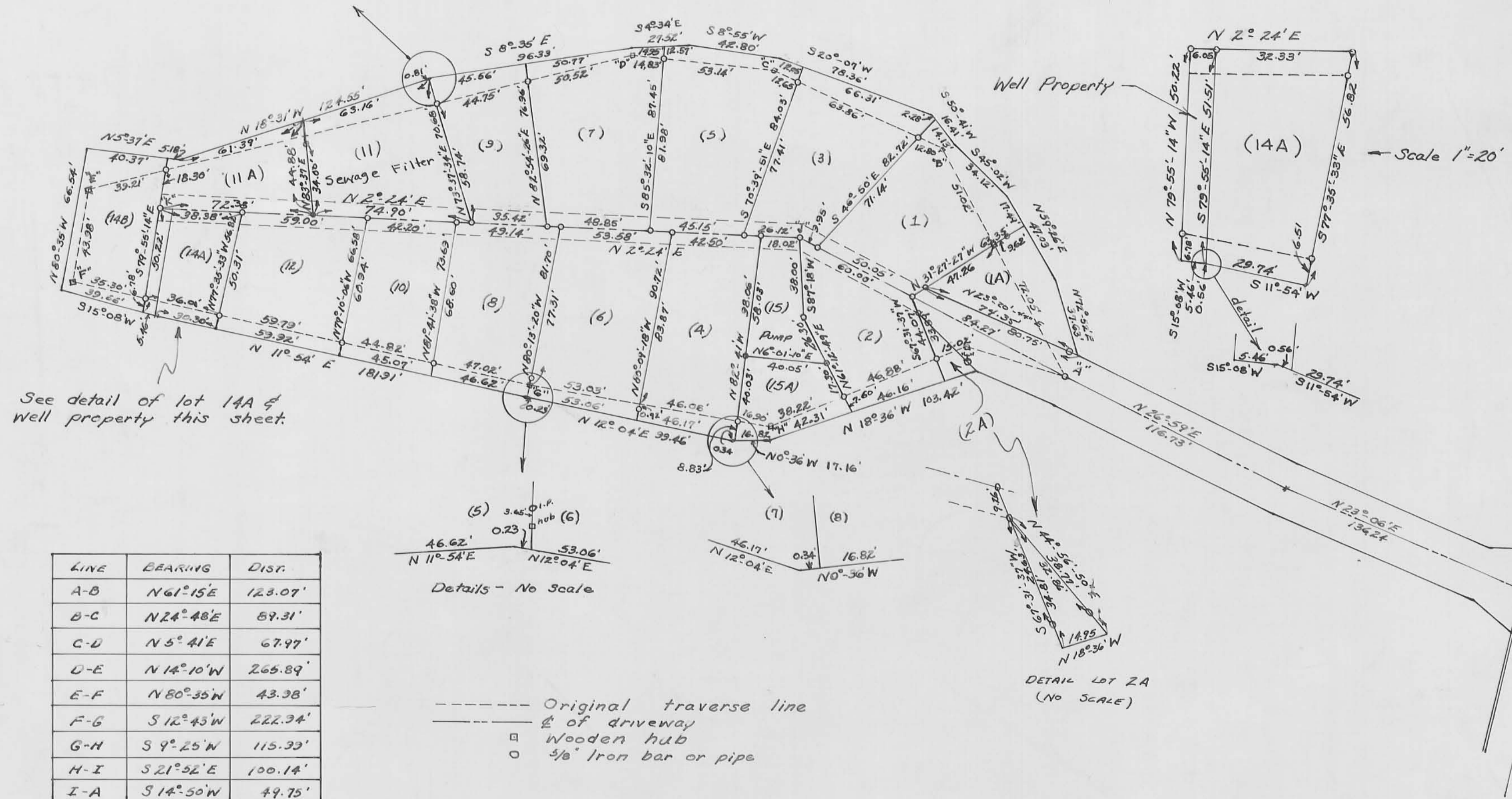


Note: For additional information refer to State of Ohio map of Artist Island on file in the County Engineers office.  
This survey filed in Drawer "R" No. 2516 Logan County Engineers office.

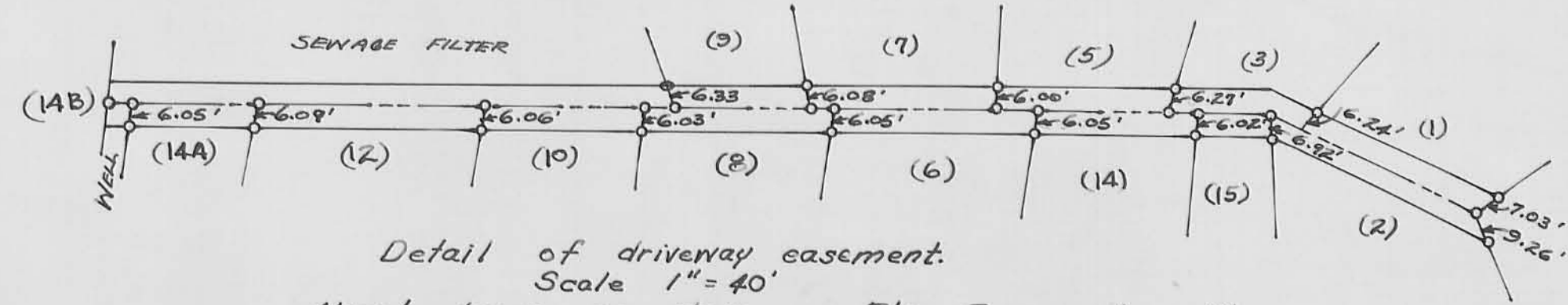


See detail of lot 14A & well property this sheet.

LINE	BEARING	DIST.
A-B	N 61° 15' E	123.07'
B-C	N 24° 48' E	87.31'
C-D	N 5° 41' E	67.97'
D-E	N 14° 10' W	265.89'
E-F	N 80° 35' W	43.38'
F-G	S 12° 43' W	222.34'
G-H	S 9° 25' W	115.33'
H-I	S 21° 52' E	100.14'
I-A	S 14° 50' W	49.75'
A-J	N 27° 11' E	144.27'
J-K	N 2° 24' E	302.82'



--- Original traverse line  
 - - - of driveway  
 □ Wooden hub  
 ○ 3/8" Iron bar or pipe



Detail of driveway easement.  
 Scale 1" = 40'  
 NOTE! Irons as shown on R/w Easement will be in place by Aug 1, 1961  
 W.H.L.

**ARTIST ISLAND**  
 LOGAN COUNTY, OHIO  
 WILLIAM H. LEWIS  
 SURVEYOR 4465  
 1961

REVISED 8/23/61 W.H.L.