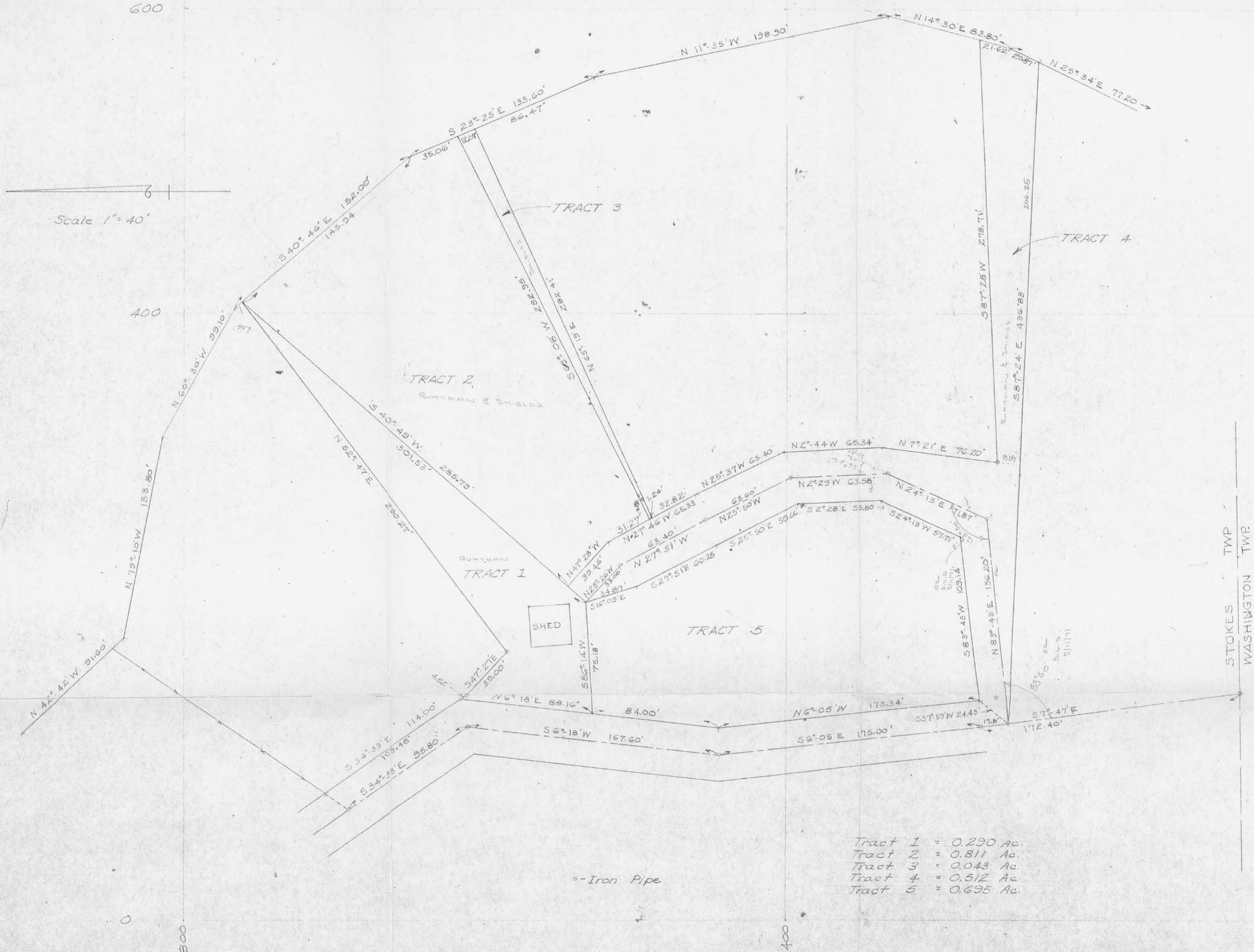


600

600

Scale 1" = 40'



o- Iron Pipe

- Tract 1 = 0.290 Ac.
- Tract 2 = 0.811 Ac.
- Tract 3 = 0.043 Ac.
- Tract 4 = 0.512 Ac.
- Tract 5 = 0.695 Ac.

SURVEY FOR FRANK QUATMAN  
**WOLF ISLAND**

WILLIAM H. LEWIS  
 SURVEYOR 4465  
 1961

INDEXED ON MAP

2709

File S-10



STOKES TWP  
 WASHINGTON TWP