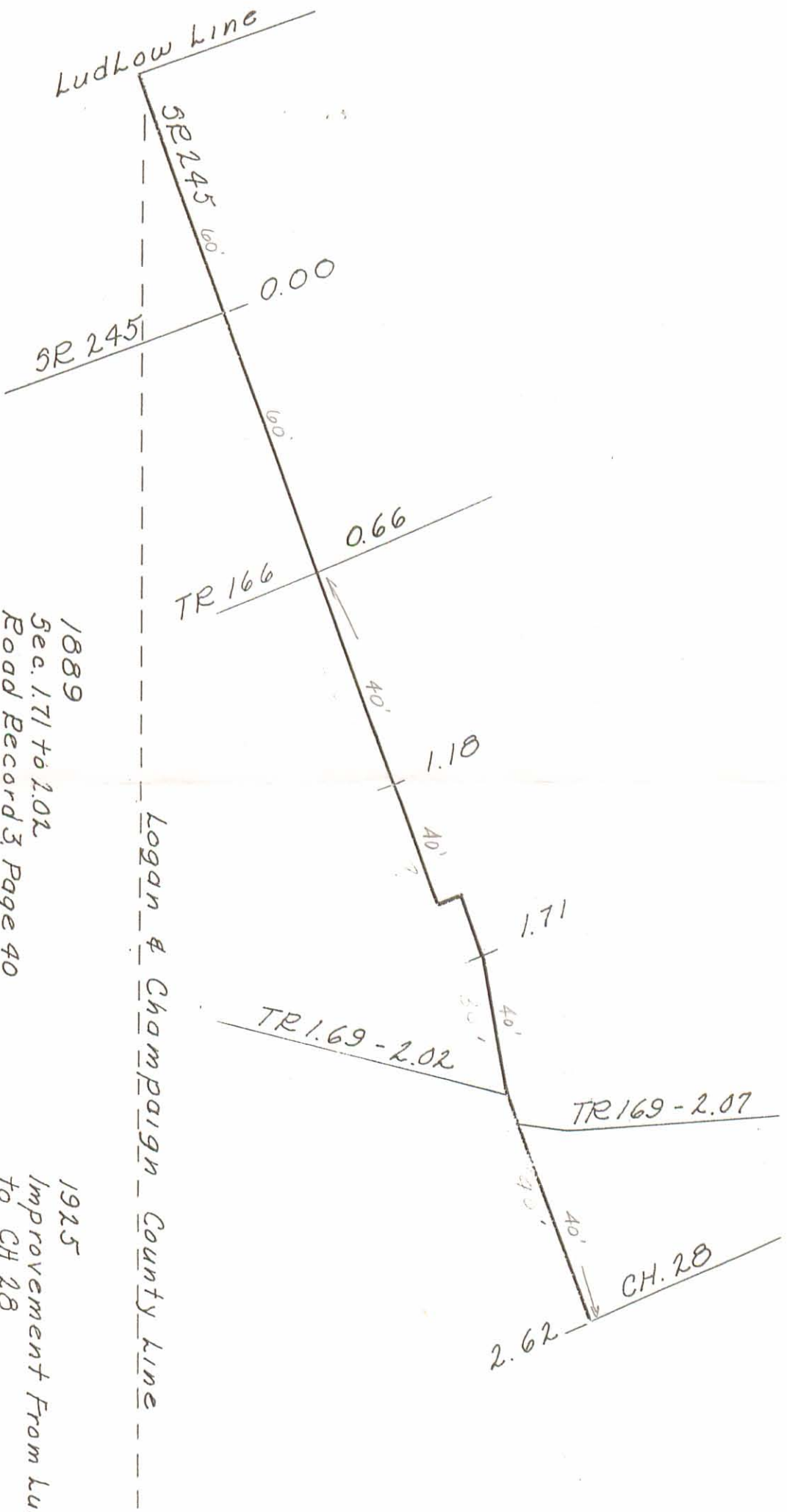


1835  
 Sec. 0.00 to 1.18  
 Com. Journal 4, Page 181  
 60' Right of way

1876  
 Sec. 2.02 to 2.62  
 Road Record 2, Page 203  
 40' Right of way



1889  
 Sec. 1.71 to 2.02  
 Road Record 3, Page 40  
 30' Right of way

1925  
 Improvement From Ludlow line  
 to CH 28  
 Com. Journal U, Page 557  
 40' & 60' Right of way

1930 - 5H 595  
 From Ludlow line to Sec. 0.00  
 Com. Journal X, Pages 327-337-351  
 60' Right of way

**Road 171**

Scale 3" = 1M.