

Beginning at a stone which I planted at the South East corner of said Survey No. 5091, in the presence of Albert Teet, Caleb M^r Brairie, Richard Armstrong, Elias Akey, John Armstrong, James Jamisson, Joshua Dickenson, & Stephen Teet, from which I marked a Sugar 20 In. Diam^r 'X' S. $35^{\circ} \frac{3}{4}$ E. 27 links; & a Beech 15 In. Diam. N. $62^{\circ} \frac{1}{2}$ W. 63 links; Thence run with the East Patent line of said Survey No. 5091 N. $1^{\circ} - 25'$ E. $42 \frac{7}{10}$ chains to a stone which I planted, with some brick bats under it, & some small stones about it, in the presence of Caleb M^r Brairie, Richard Armstrong, Elias Akey, John Armstrong, & David Teet; Thence N. $88^{\circ} - 40'$ W. $39 \frac{7}{10}$ chs to a stone which I planted in the presence of the same persons present at the planting of the Beginning corner, from which I marked a Beech 'X' 8 In. Diam. N. 26° E. 26 links; an Ironwood 5 In. Diam. S. 52° W. 5 links; & a Small Ash 65 W. 5 links; Thence with James Jamisson, East line S. $1^{\circ} - 25'$ W. $42 \frac{7}{10}$ chains, passing several marked line trees, to ~~a~~ a stone which I planted by a notch the South Root of a large Sugar tree, and in the South patent line of the said Survey No. 5091, from which (stone) a Beech 20 In. Diam. bears N. 71° E. 33 links, & an Ironwood 4 In. Diam. S. $62^{\circ} \frac{1}{2}$ W. 25 links; each marked 'X' facing the corner, Done in presence of the same persons named as being present at the planting of the Beginning corner; Thence with the said South patent line S. $88^{\circ} - 40'$ E. $39 \frac{7}{10}$ chains to the place of Beginning, containing $170 \frac{7}{10}$ Acres

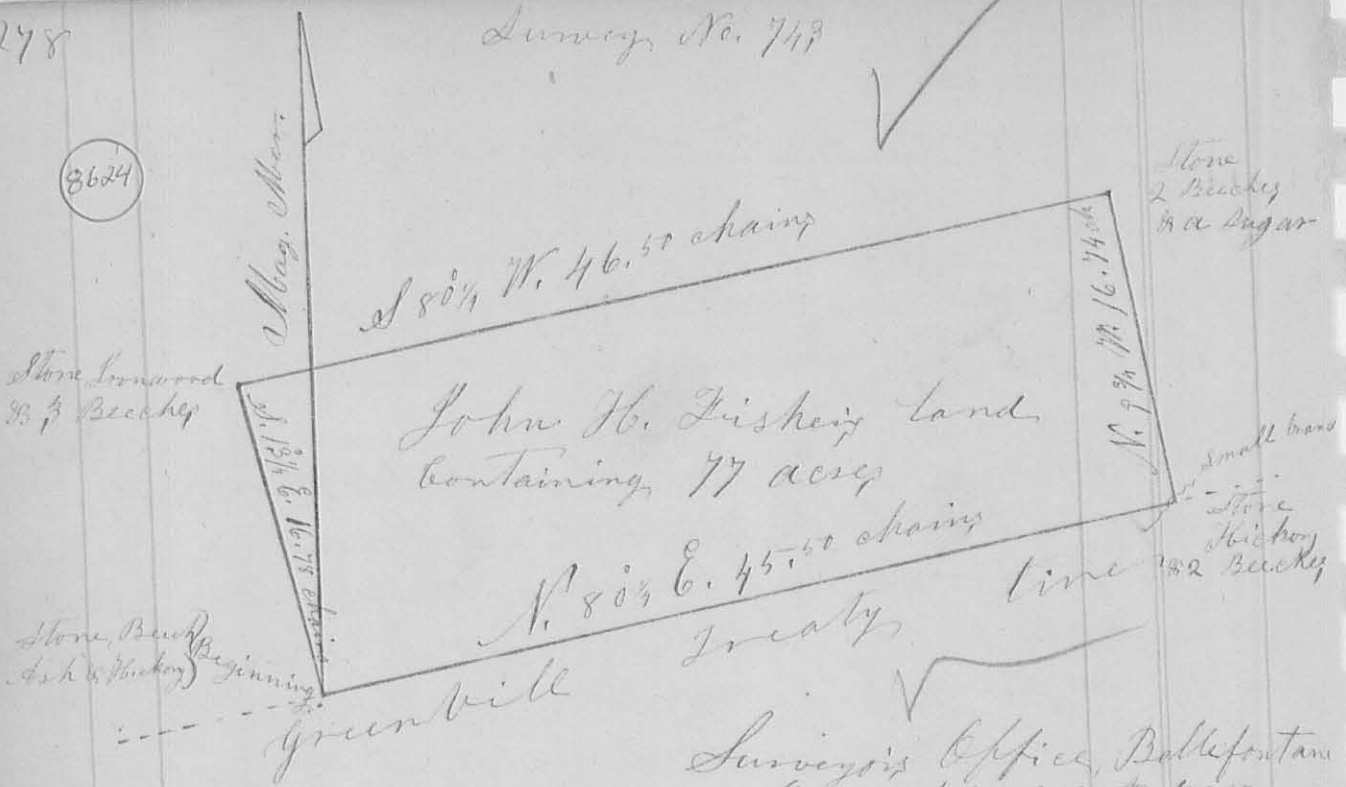
I then planted two sharp pointed stones
 (one lime the other sand) in the middle of the
 East line of said lot of land, containing
 170 ⁷⁰/₁₀₀ acres, ~~from~~ as one of the corners
 between said Armstrong & Teets, land,
 from which I marked a Beech 'X' 20 in. dia
 S. 29° W. 9 ¹/₂ links; & a Mulberry 1 ¹/₂ in. Dia. S. 11° E.
 69 links; Run thence N. 88. 40 W. marking eight
 trees four or aft, & trees near the line on the side
 next thereto, as the line between the said Teets heirs,
 and Richard Armstrong, 39 ⁷⁸/₁₀₀ chains to a
 Stone which I planted in the ^{center of the} West line
 of said tract of land, from, which I marked
 a Hickory 10 in. Dia. N. 14° E. 18 links, & a lynch
 12 inches Dia. N. 36 ³/₄ W. 24 links; Done in the
 presence of those persons present at the
 planting of the Beginning (also block) corner
 except Joshua Dickenson, & Albert & Stephen Teets
 who were not present at the planting of the
 last corner planted; i.e.; the corner in the
 centre of the W. line.

John Armstrong }
 David Teets } Chain Men, by mutual
 consent of the parties —

I hereby certify that the foregoing plat
 & Report are correct.

H. C. Moore County Surveyor
 of Logan County, Ohio

3624



Surveyor's Office, Bellefontaine
Ohio April 29th 1858

The above plat is a representation of a tract of land as surveyed by me, H. C. Moore, Co. Surveyor of Logan Co. of the State of Ohio, on the 31st day of March, A. D. 1858, at the request of John H. Fisher, for the purpose of establishing the line & corner of 77 acres of land, situated in Rushcreek Township of said Co. of Logan; and bounded as described as follows, to wit:

~~Beginning at a stone which I planted in the Greenville Treaty line, at the South West corner of said Survey No. 9888, Being a part of Virginia Military Survey No. 9888, patented to Charles Porterfield; Beginning at a stone, which I planted in the Greenville Treaty line, at the South West corner of said Survey No. 9888 from which a White Hickory 7 Ln. Lim. bears S. 79 1/2 E. 2 links; a Blue Ash 20 Ln. Lim. N. 73 E. 3 1/2 links; a Buck 16 Ln. Lim. N. 19 W. 54 links; Thence run with the said Greenville Treaty line N. 80 1/4 E. 45.50 chains, ^{passing several marked trees} to a stone at the S. W. corner of Peter Houchman's Land, near the South bank of a small branch, from which a Black Hickory 12 Ln. Lim. bears N. 12 E. 3 1/2 links;~~

A Beech 18 In. Dim. S. 71¹/₂ E. 22 links; & a Beech 13 inches Dim. S. 16¹/₂ W. 33 links; Thence with the said Peter Houchman's West line N. 7¹/₄ W. 16.74 chains, passing several marked line trees, to a stone which I planted in said Houchman's line, marked "Fisher" on the west side & + on the top, with several small stones around it, from which a Beech 13 inches in Dim. bears S. 33³/₄ W. 7¹/₂ links; A Beech 15 In. Dim. N. 6¹/₂ E. 22 links; & a Sugar tree 20 In. Dim. N. 80¹/₄ W. 32 links; Thence S. 80¹/₄ W. 46⁵/₁₀₀ chains, marking sight trees for & aft, & trees near the line on side next thereto, as the line between the said John G. Fisher & David Pugh, to a stone which I planted in the West Patent line of said Survey No. 7888, from which a Beech 14 In. Dim. bears S. 41¹/₂ E. 27 links; an Ironwood 3 inches in Diameter N. 1¹/₂ W. 8 links; a Beech 15 In. Dim. N. 56¹/₂ W. 36 links; a Beech 5 In. Dim. S. 6¹/₂ W. 13 links; Thence with the said West Patent line S. 13¹/₄ E. 16.78 chains, passing several marked line trees to the place of Beginning, containing Seventy Seven Acres; exactly;

I marked all the afore named ^{Witneys} ~~corner~~ trees with 'X' cut in the side facing the corner, Done, in the presence of David Pugh, John G. Fisher, John G. Fisher, the chain men & the Markers, Wilson M^d Adams } Levi Leidergh } Chain Men, Aaron Graybill, Marker,

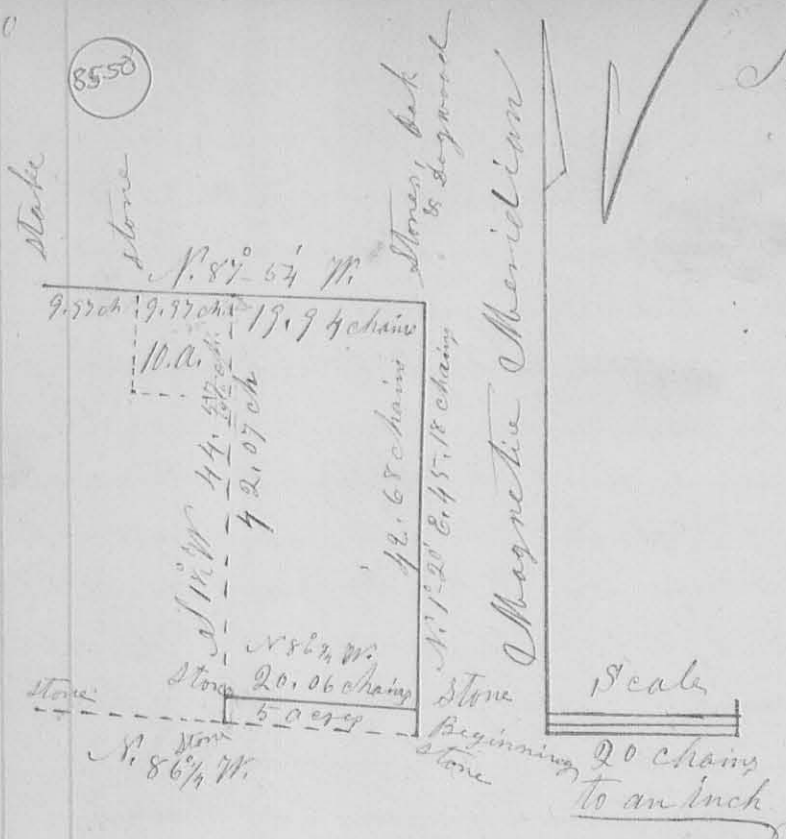
I hereby certify the foregoing, Plat and report to be correct -

H. C. Moore, County Surveyor of Logan County Ohio

8550

Survey No 784

Survey Nos. SKFP
FROM 743 To 784
HG
3-21-91



Surveyor's Office Bellefontaine O.
April 29th 1858

The above plat represents a survey of the East half of the N. East quarter of section No. 23 of Town N. 4, E. Range No. 13, Co. G. W. R. S., as surveyed by me, H. C. Moore, County Surveyor of Logan Co. Ohio, on the 3 day of April, A. D. 1858, at the request of Samuel Heading, for the purpose of establishing a line cutting five acres off the South end of the said 1/4 quarter, & the corner contiguous thereto, for re-visitizing the N. E. corner (being the N. E. corner of the said section No. 23.) And finding the North line of the said Quarter, & fixing a corner in the middle of the N. line of the West half of the said quarter, which I done in the following manner; to wit: Beginning at a stone, at the S. E. corner of the said Quarter, from which I found a large W. Oak bearing S. 45 E. 18 links; and a Red Oak stump N. 78 W. 19 links; Run thence N. 1 20 E. 45 ¹⁰⁰/₁₀₀ chains

at the N. E. corner of the section
 to a stone, marked on the top, thus " + "
 which had been covered by the grading
 of the road, and which was said to have been
 planted by Oden Obayer while County Surveyor
 of this County, & since recognized by Jas. B.
 McLaughlin while he was Co. Surveyor of this
 County, and while the original witness trees
 (W. Oak & Logwood) were living & green, from
 which I found the stump of a small W. Oak
 bearing N. 38° W. (nearly) $\frac{1}{3}$ link, said to be the
 original witness; & the place shown me by Mariner
 Kinnan & Christian Hoffman as being where
 a large Logwood formerly stood, bore N. 82° E.
 27 link; I then planted a flat lime-stone
 by the East side of the stone I found here,
 & marked a Logwood $\frac{1}{2}$ ln. Dir. thus " X " at 62 W.
 53 link, & a W. Oak 22 ln. Dir. " X " S. 70° W. 66
 link; Done in the presence of P. Philip
 Heading, Samuel Heading, Mariner
 Kinnan, Christian Hoffman, David
 Plank, Samuel Plank, George F. Dun,
 James Dun, & Ephraim Miller;

Thence Run N. 87° - 57' W. 39.88 chains to a
 Stake N. W. corner to the Quarter, & N. E.
 corner to the N. W. quarter of the same section,
 planting a stone in a prairie at 29.91 chains
 for Samuel Heading's N. W. corner to a
 ten-acre lot off the North end of the East
 half of the West half of the said N. E. quarter
 of Sect 23. I then commenced again at the
 Beginning corner, and run with the E. line of
 the of the section N. 1° 20' E. 2.482 chains where
 I planted a stone as Samuel Heading's S.
 E. corner, & the N. E. corner to the five acre
 lot sold of the South end of said E. half
 quarter, & marked a W. Oak " X " 30 ln. Dir.

N. 73° E 18 links, distant 4. Thence N. 86 1/4 W,
parallel with the south line of the quarter,
20.06 chains to a point in the line between
the E. & West halves of the said N.E. quarter
& 2.47 1/2 chains from the south line of the
said quarter, where I planted a long
slender stone at Samuel Heading's S.W.
corner, & the N.W. corner to the aforesaid
5 acre lot; — — — — —

Done in the presence of Samuel
Plank, David Plank, Jacob Kennagy,
Philip Heading & Samuel Heading, —

From this measurement I also
calculated the length & bearing of the line
between the East & West halves of said N.E.
quarter to be S. 1 1/2 W. 44.57 chains, and
the area of the East half to be 89.71/100 acres,
and Samuel Heading's part thereof to be 84.71/100
acres.

David Plank }
Philip Heading } Chainmen (affirmed)

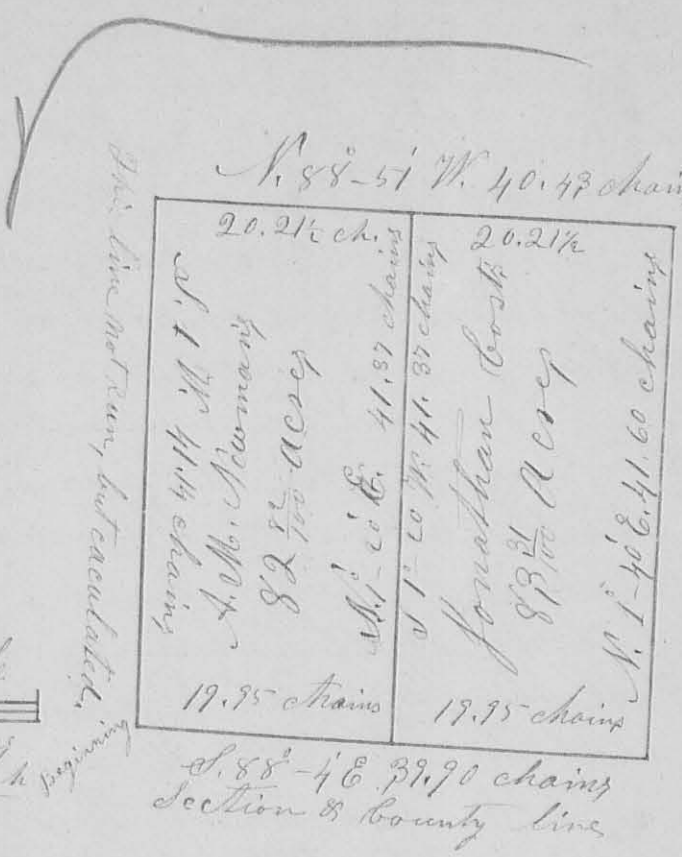
I hereby certify the foregoing plat
and report to be correct — — —
H. C. Moore Cor. Surveyor
of Logan Co. Ohio

Survey No. 785

(2444)

Magnetic Meridian

Scale
30 chains
to an inch



Surveyor's Office Bellefontaine Co.
April 29th A. D. 1858

The above plat represents the South West quarter of Section No. 28 of Town No. 3, R. 1, Rang. No. 13, E. G. M. R. S. in Miami Township Logan County Ohio, as surveyed by me, H. C. Moore County Surveyor of said County of Logan, on the 8th day of April A. D. 1858, at the request of A. M. McManis and Jonathan Cost for the purpose of establishing the N. E. corner of the said quarter (it being also the centre corner of the said section) & the line and corner between the East & West halves of the said S. W. quarter; which I done in the following manner; to wit:

Finding the original half mile corner in the West line of the section; to wit, a stone, from which I found a Beech stump

N. 32° W. 11 links; And a stone in the south line of the Section, at the original half mile corner, from which I found a Beech stump N. 30° E. 17 links; & from which I also marked an Ash 'X' 22 In. Diam. N. 23° E. 36 links, & a Beech 'X' 22 In. Diam. N. 34° E. 37 links; And further; finding a stone at each of the four section corners; I measured the North and East lines of the Section, Then run a right line from the witness corner in the South line of the Section, to the centre of the North line of the same; and another right line from the centre of the East line of the Section to the witness corner in the West line of the same; and at the intersection of these right centre lines, in the centre of the section, I planted a stone & some brick as the centre quarter corner of the Section, or the N. E. corner of the said S. W. quarter, from which I marked an Elm 'X' 1 $\frac{1}{2}$ In. Diam. S. 59° W. 18 links; & an Ash 18 In. Diam. N. 18° E. $33^{\frac{1}{2}}$ links.

I then run a right line from the middle of the South line of the said S. W. quarter, where I planted a stone with two pieces of brick under it, & marked a Swamp Elm 'X' 8 In. Diam. N. 59° W. 78 links; and a Bur Oak 'X' 10 In. Diam. S. 63° W. 70 links;

Thence N. $1-20^{\circ}$ E. 41.37 chains to a stone & some pieces of brick which I planted in the middle of the North line of the same said quarter section, from which I marked a Hickory 12 In. Diam. S. 4° W. links. This last line, run as the line between the East & West halves of the said S. W.

quarter, All Done in the presence of the chainmen, A. M. Newman, & Jonathan Cost; and the centre corner of the section planted in the additional presence of Joseph S. Davis & Daniel Souder.

I also calculated, from this measurement, the length & bearing of the West side of the quarter, which I thus find to be S. 1° W. 41.14 chains. And find the West half, A. M. Newman's part, of the quarter to contain 82.82 Acres, And the East half, Jonathan Cost's part, to contain 83.75 acres. The length & bearing of all the lines are represented on the foregoing plat.

David Latimer }
W. J. Allen } Chainmen

I hereby certify the foregoing plat and report to be correct.
H. C. Moore County Surveyor
of Logan County, Ohio

Beginning at a Stake between a Jack Oak
 24 Ln. Dim. & a Bur Oak 12 Ln. Dim. 24 ft. apart,
 and in the edge of Mackachack prairie,
 near the Gravel Pike, run thence $N. 18^{\circ} \frac{1}{4} E. 11.31.75$
 chain to a stake, from which I marked a Hickory
 thus 'X' 10 Ln. Dim. S. $51^{\circ} \frac{1}{4} W. 24$ links, & a Hickory
 14 Ln. Dim. N. $66^{\circ} \frac{1}{2} E. 27^{\circ}$ links; Thence N. $70^{\circ} \frac{1}{4}$
 E. 20.20 chain to a stake between 3 large W.
 Oaks; Thence N. $39^{\circ} \frac{1}{4} E.$ crossing Mackachack 3
 times, & passing up the channel of the same part
 of the way, 26 chains to a stone in the creek
 of Mackachack, & in a County Road; Thence with
 said Co. Road S. $50^{\circ} \frac{1}{4} E. 10.26$ chains to the centre
 of a forked Cherry three feet in Dim.;
 Thence S. $1^{\circ} E. 6.50$ chains to a stone from
 which a Bur Oak 22 Ln. Dim. bears N. $77^{\circ} \frac{1}{4} E.$
 11 links; Thence N. $77^{\circ} \frac{1}{4} E. 25.10$ chains to a
 Cherry 13 Ln. Dim. & a Black Oak 9 Ln. Dim.
 in the east patent line of the said Survey
 No. 4479. Thence with the said Co. Patent
 line S. $18^{\circ} 52' E. 21.80$ chains to a stone which
 I planted in the south side of the Gravel
 Pike ground, (25 ft. from the centre) & marked
 a W. Oak 'X' 12 Ln. Dim. S. $25^{\circ} E. 6$ links, & a
 W. Oak 11 Ln. Dim. S. $41^{\circ} W. 11$ links,
 Thence with the south side of the Gravel
 pike ground S. $56^{\circ} 40' W. 19.78$ chains to a
 stone. Thence S. $70^{\circ} 50' W. 13.90$ chains to a
 stone in a ditch; Thence with said ditch
 S. $28^{\circ} \frac{1}{4} W. 2.67$ chains to a stone in the ^{North} side
 of the Gravel Pike ground; Thence
 with the N. side of ~~the~~ the said Pike ground
 (25 ft. from the centre) S. $64^{\circ} \frac{3}{4} W. 14.50$ chains
 to a stone which I planted; Thence
 N. $70^{\circ} \frac{1}{4} W.$ Crossing Mackachack at about
 65 links, & passing by the south side

of a small Cherry tree at about
 130 links, 9.46 chains to a stone which
 I planted, from which a Bar Oak
 14 Ln. Dim. bears N. 15° W. 13 links, & a
 hollow Hickory 20 Ln. Dim. S. 15° E. 13
 links. Thence S. 56° W. 14.60 chains to
 the place of Beginning, containing two
 hundred twenty nine & one half (229½) acres

I then run the division line in the
 following manner; to wit;

Beginning at the stone at the sixth
 station of the outside line, from which
 the Bar Oak 22 Ln. Dim. bears N. 77° E. 11
 links, run thence S. 2° E. 10.75 chains, nearly
 with a Co. Road but crossing it, to a tall
 forked cherry stump used as a gate post,
 near the barn on the premises, thence
 S. 81°-10' W. 20.27 chains to a cherry stake in
 the creek of Mackachack, from which a
 Cherry 2 Ln. Dim. bears S. 36¼° E. 21 links; Thence
 S. 18°-20' E. 8.03 chains crossing Mackachack three times
 to a stake from which a Bar Oak 30 Ln. Dim. bears
 N. 61° W. 27 links; Thence S. 70¼° W. 22.50 chains to a
 stone which I planted in middle of the west
 line of the whole 229½ acres, from which a
 Black Walnut 12 Ln. Dim. bears S. 15½° E. 50 links
 & a W. Oak 24 Ln. Dim. N. 64° W. 19 links;

Thus measuring off to George Moots 76½
 acres from the N. W. part of the farm;
 and to John Moots 153 acres from the South
 East part of the farm; as represented by the
 foregoing plat. The bearings & distances marked on the plat

David Randle }
 Henry Grimey } Chain Men

I hereby certify the foregoing plat and report
 to be correct. H. C. Moore, County Surveyor
 of Logan Co. Ohio

Survey No. 784 ✓

Surveyor Office Bellefontaine O. April 30 1858

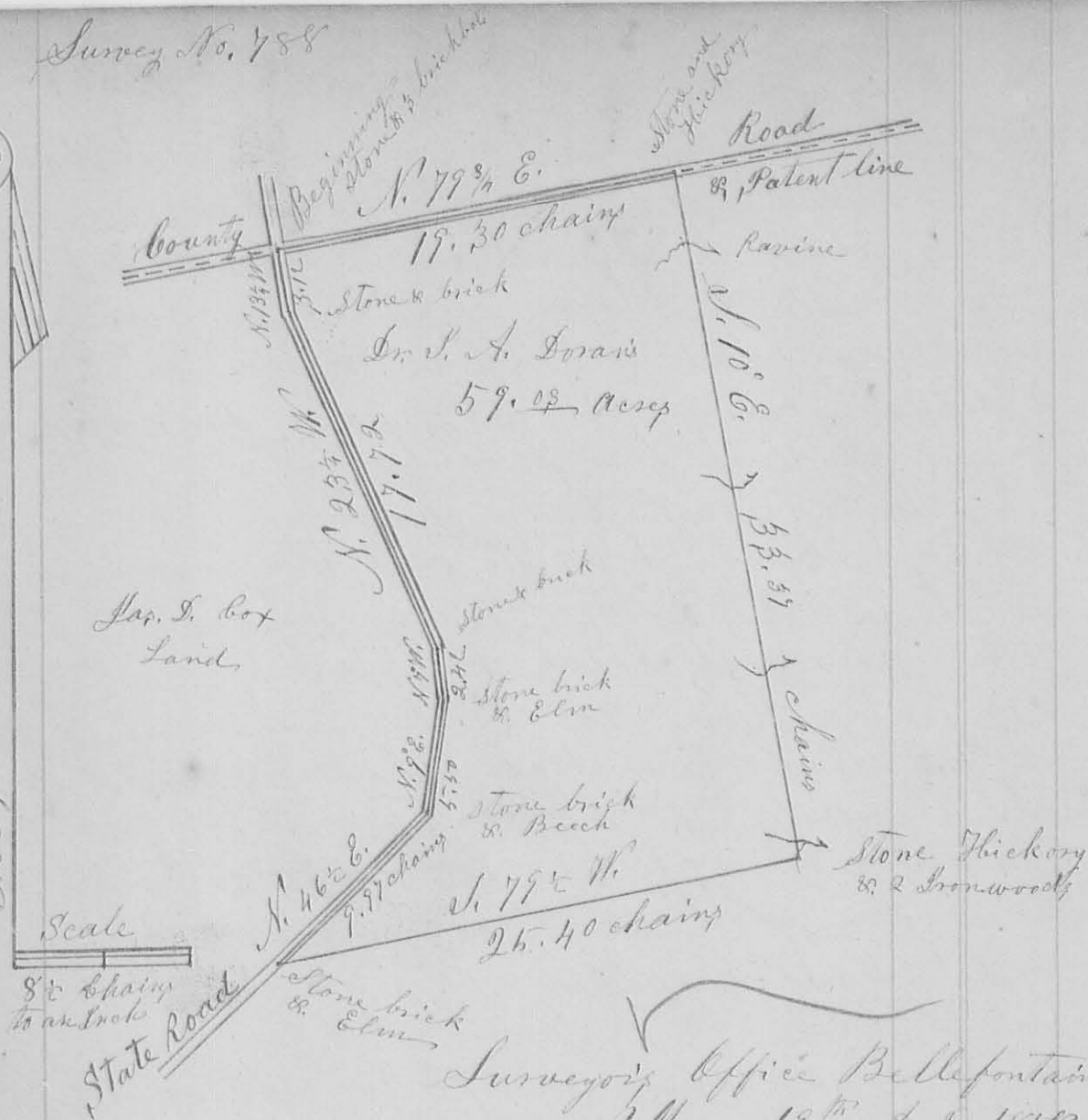
Surveyed for Peter Harper on the 26th day of April A. D. 1858, one half acre in the town of Bellefontaine, as follows: to wit: Beginning in the centre of Chillicothe Street 38 7/10 poles from East of the East side of the 30 ft. Street on the East side of the Original town plat of Bellefontaine Run thence S. 2 1/4 W. with the line between lots Nos. 4 & 5 of Powers' subdivision of a 9 1/2 acre lot which he bought of Mrs. Jewell 1 1/4 poles to a stake; Thence S 88 1/2 E. 5 poles & 17 1/2 links to a stake; Thence N 2 1/4 E. 1 1/4 poles to the centre of Chillicothe Street; Thence N. 88 1/2 W. 5 poles & 17 1/2 links with said street to the place of Beginning; containing 1/2 acre.

Nelson Jackson }
 & H. C. Moore } C. C.

I hereby certify the above to be correct.
 H. C. Moore, County Surveyor
 of Logan County, Ohio

8626

Magnetic Meridian



The above plat represents a tract of land as surveyed on the 8th day of May A. D. 1858, by me, H. C. Moore, County Surveyor of Logan County, Ohio; at the request of James D. Cox, for the purpose of ascertaining the area thereof, and establishing the lines & corners thereof, especially those six corners in the State Road hereinafter named. Said tract of land being situated & lying in Rushcreek Township of Logan County & State of Ohio; and deeded by said James D. Cox & his wife to Dr. Isaac A. Doran on the 13th day of May A. D. 1858; and which is bounded & described as follows: to wit: Being a part of Virginia Military Survey No. 9888. in the name of Charles Postersfield Beginning at a stone & 3 pieces of brick in the

North patent line of the said Survey No. 9888
 when it is intersected by the centre of the State
 Road leading from Zanesfield to Sanduskey,
 thence with said patent line N. $79\frac{3}{4}^{\circ}$ E. 19.30 ch-
 -ains to a stone marked 'K' from which a Hickory
 18 Ln Dim bears N. $66\frac{1}{2}^{\circ}$ W. 23 links; Thence S.
 10° E. 33.37 chains (crossing a ravine at 2.15, one at
 14, one 24.50, & one at 32.20 chains) to a stone marked
 'K' in the E. side of a small ravine from which
 a Hickory, 3 Ln Dim bears N. 30° E. 21 links
 & 2 Ironwoods S. $31\frac{1}{2}^{\circ}$ W. 26 links; Thence S. $79\frac{1}{2}^{\circ}$ W.
 25.40 chains to a stone & brick-bats in the afore-
 said, State Road leading from Zanesfield
 to Sanduskey, from which a ~~the~~ Sour Elm
 14 Ln Dim bears S. $68\frac{1}{2}^{\circ}$ E. 60 links; Thence
 with said road N. $46\frac{1}{2}^{\circ}$ E. 19.97 chains to a
 stone & brick-bats, from which a Beech 17 Ln
Dim bears S. $46\frac{1}{2}^{\circ}$ E. 53 links; Thence ^{with sd road} N. 9° E. 5.50
 chains to a stone & brick-bats from which an
 Elm 11 Ln Dim is N. $7\frac{1}{2}^{\circ}$ E. 58 links; Thence
 N. 7° W. 2.42 chains with said road, to a stone &
 brick-bats; Thence with said road N. $23\frac{1}{4}^{\circ}$ W.
 17.72 chains to a stone & 3 pieces of brick;
 Thence N. $13\frac{1}{4}^{\circ}$ W. 3.12 chains to the place of
 beginning; containing Fifty nine $\frac{3}{100}$ (59 $\frac{3}{100}$)
 Acres, with the first & last five, or at all the
 corners in the State Road, I planted the stones
 & brick-bats; & marked all the witness trees herein
 described with 'X' cut in the side of the tree
 facing the corner. Done in the presence of
 James D. Cox, Dr. S. A. Doran, John J. Mintz,
 & Samuel Cross }
 John Gregor } C. C.

I hereby certify the foregoing plat and
 Report to be correct, H. C. Moore, County
 Surveyor of Logan Co. Ohio



Surveyor's Office Bellefontaine Co. June 7th 1858.
 The above plat represents fractional section
 No. 7, of Town No. 2, & Range No. 14 E. & M. R. Sit-
 uated in Logan County and state of Ohio, as
 surveyed by me, H. C. Moore, County Surveyor
 of Logan County Ohio, on the 28 & 29 days of
 May, and the 2nd day of June A. D. 1858, by
 the request of C. C. Humphreys, for the purpose
 of ascertaining the number of acres contained
 therein, and especially for the purpose
 of laying off one full and equal fourth
 part thereof, on the south side of the said
 section, to the said C. C. Humphreys;
 except a triangular lot of 5.95 acy
 cut off of the south east corner of the said
 section, by the Louisville & Sandusky

Rail Road, which I did in the following manner; to wit;

The Section

Beginning at a stone in a prairie at the S.E. corner of the said section No. 7, Run thence

N. 1° E 40.70 chains to a stone at the 1/2 mile corner, crossing the Louisville & Sanduskey Rail Road at 16.12 chains; Thence N. 1° 55' E. 40.24 chains to a stone at the North East corner of the said section; Thence N. 88 3/4° W. 65.30 chains with the North line of the section to the Great Miami River; thence down the East bank of the Miami River with the meanders thereof to a stake which I planted at a previous time where I found the roots of an Elm described as the original corner tree to the South West corner of the section; Thence S. 88° 40' E. 60.02 chains to the place of beginning passing J.P. Willey N.E. corner at 27.60 chains, and the North end of Main Street of Schraffe at 44.46 chains; and find the section to contain five hundred fifteen or eighty-hundredth; (515.80) Acres.

The Triangle Same

I then measured the triangular piece cut off by the Louisville and Sanduskey Rail Road as follows;

Beginning at the stone at the S.E. corner of the section run with the East line of the section N. 1° E. 14.66 chains to a stone in the S.E. side of the said L. & S. Rail Road ground; Thence S. 30 1/2° W. with the S.E. side of said Rail Road ground 16.70 chains to a stone in the South line of the section; Thence S. 88° 40' E. with the section line 8.13 chains to the beginning,

containing, Five, & Ninety five hundredths,
(5.95) acres.

C. C. Humphrey
Land

I then measured C. C. Humphrey's part of the section in the following manner—
Beginning at the Stake in the east side of the Miami River at the S. W. corner of the section, from which a Stone bears S. $88^{\circ} 40'$ E. ~~51.90~~ ^{51.90} chains to a ~~stone & some brick-bats in the South East side of of the Louisville & Sandusky Rail Road ground;~~ the 11 links, run with the south line of the section S. $88^{\circ} 40'$ E. 51.90 chains to a stone & brick bats in the South East side of the Louisville & Sandusky Rail Road ground; Thence with the said S. E. line of the L. & S. Rail Road ground N. $30\frac{1}{4}$ E. 16.76 chains to a stone & some brick-bats in the East line of the section; Thence with the East line of the section N. 1 E. $6\frac{33}{100}$ to a stone & brick-bats from which a White Oak 27 Ln. Dim. bears S. $84^{\circ} 50'$ W. 52 $\frac{1}{2}$ links; Thence N. $88^{\circ} 40'$ W. 62.10 chains to a point in the East side of the Miami River near two large hollow Sycamores, & from which, also, a sycamore $\frac{3}{4}$ Ln. Dim. bears S. 71° E. 7 links; a sycamore plancher Dim. N. 46° E. 11; and a Hickory $\frac{3}{4}$ Ln. Dim. S. $4\frac{1}{2}$ E. $3\frac{33}{100}$ links distant; Thence down the East side of the great Miami River to the place of beginning, (crossing a Bay 35 links wide at 1.83 chains,) by a stationary line S. $4\frac{1}{2}$ E. 21.05 chains, with offsets, as represented in the following Table; to wit.

| No. Sta. | Sta. | Dis. | off-sets |
|----------|------|------|----------|
| 1 | . | .00 | .14 |
| 2 | | .53 | .25 |
| 3 | 5 | .53 | .30 |
| 4 | 10 | .53 | .75 |
| 5 | 14 | .03 | 1.10 |
| 6 | 18 | .13 | .75 |
| 7 | 21 | .15 | .11 |

Containing one Hundred ~~25~~ twenty three (123) Acres.

I also measured all that part of the Louisville and Sandusky Rail Road ground which is included in the bounds of the above described 123 acres, and find the area thereof to be two, & eighty, - hundredths (2.80) acres; thus

leaving an area of $120.\frac{20}{100}$ acres not including any part of said Rail Road ground.

Zach. Westfall }
 James Scott } Chain Men
 Wilson Vansky }
 Adam Bruner }

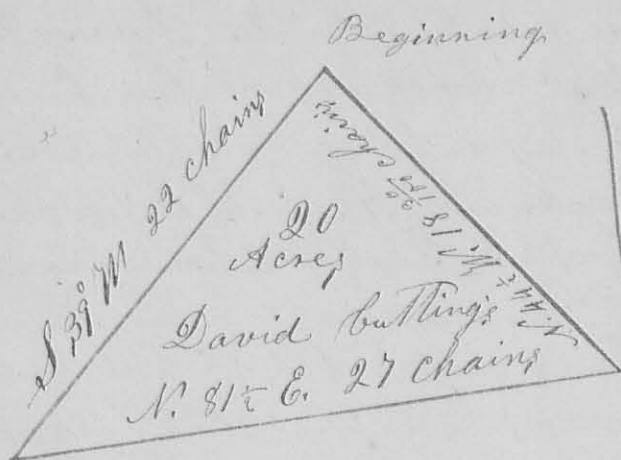
I hereby certify the foregoing plat and report to be correct.

H. C. Moore County Surveyor
 of Logan Co. Ohio

N.

8678

H. Mag. Ober



Scale

85 chains, or
3/4 poles to
an Inch

Surveyor's Office Bellefontaine
Ohio July 30th 1858

The above plat is a representation of 20 acres of land as surveyed by me, H. C. Moore, County Surveyor - of Logan County Ohio, on the 18th day of June A. D. 1858, for, & by the request of Robert Johnson, for the purpose of laying off twenty acres of land sold by the said Robert Johnson to David Cutting, and which was conveyed by Warranty Deed to the said Cutting by the said Johnson & his wife on the 15th day of June A. D. 1858. Said 20 acres of land being a part of 50 3/4 acres of Robert Meanies entry of Virginia Military Survey No. 9952 in Richland & Rushcreek Townships, deeded to said Robert Johnson by Cornelius Jamison and wife March 14th A. D. 1858. I surveyed & laid off said 20 acres in the following manner; to wit: Beginning at a stone & some brick-bats in the County Road leading from North Wood to the Big Spring, from which a stone at the corner between the lands of Alvin Clark

and James Trumbell bears S. 39° W. 19 links distant; Thence run S. 39° W. 22 chains (with the said Co. Road nearly all this distance) to a Stone; Thence N. 81½ E. 27 chains to a stone from which a Beech 10 Ln. Dim. bears North 31° E. 9 links; & a Beech 14 Ln. Dim. N. 59½ W. 37 links; Thence N. 44½ W. 18. ³⁰/₁₀₀ chains to the place of beginning containing twenty acres.

Chain carries

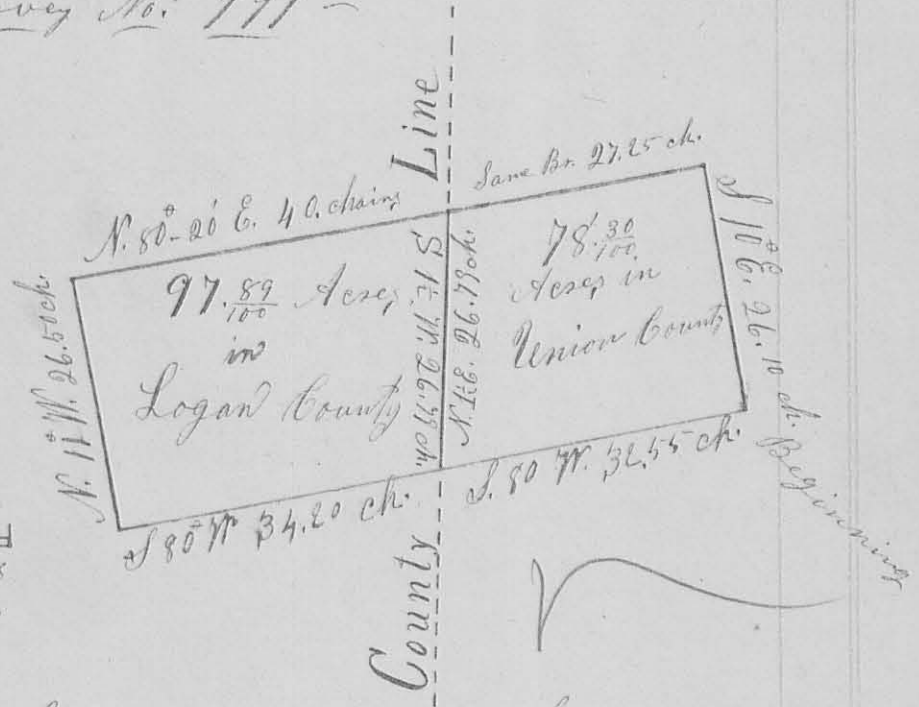
I hereby certify the foregoing plat & report to be correct: H. C. Moore, County Surveyor of Logan Co. Ohio

Survey No. 791 -

8629

Mag. Mer.

Scale
20 Chains
to an Inch



Surveyor's Office Bellefontaine Ohio
July 30th A.D. 1858

The above plat is a representation of a part of Virginia Military Survey No. 9915, as Surveyed by me, H. C. Moore County Surveyor of Logan County Ohio on the 27 day of July A.D. 1858, at the request of James S. Robinson (agent) for the purpose of establishing the line & corner there to, & ascertaining the area

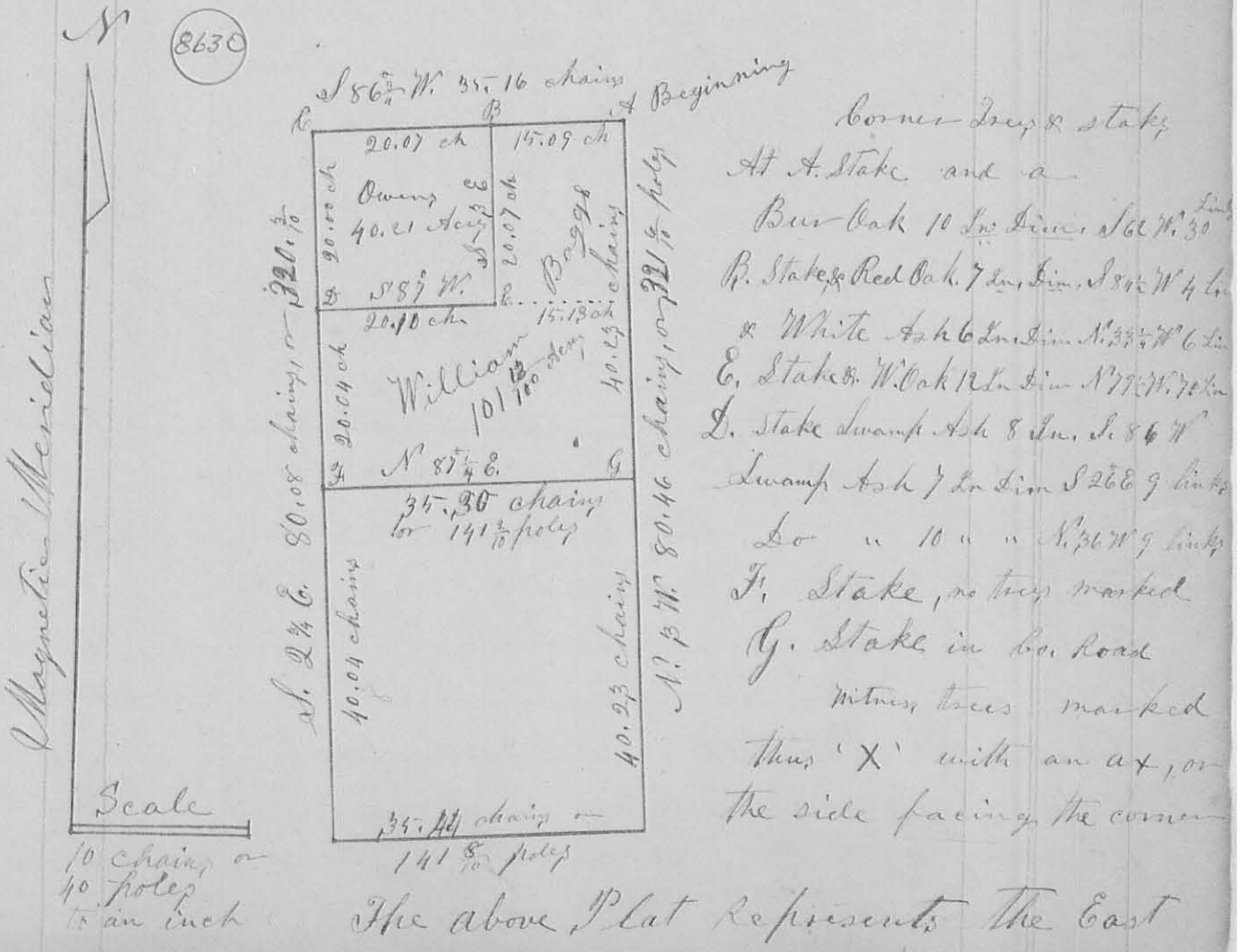
thereof; which I did in the following Manners,
 to wit: Beginning at a stone, Ash, Ly^W &
 Sugar in Union County, & at the South East
 corner of said Survey No. 99 15 Run thence
 with the South line of said Survey S. 80° W. $32\frac{57}{100}$
 chains to the county line between the Counties
 of Logan & Union, of the state of Ohio, where
 I drove a stake & marked a Beech (Thru X)
 18 Ln. Dim. N. 41° W. 26 links, & a Beech 15 Ln. Dim.
 S. 15° W. 16 links; Thence continuing the same course
 & on the said South line of said Survey, in the County
 of Logan $34\frac{20}{100}$ chains to 2 Sugar & a Beech, where
 I planted a stake & marked a sugar 12 Ln. Dim.
 N. $34\frac{1}{2}$ ° E. $7\frac{1}{2}$ links distant, a Beech 7 Ln. Dim. S. 31° E.
 $2\frac{1}{2}$ links; & a Beech 5 Ln. Dim. N. 24° W. 11 links;
 Thence N. 11° W. $26\frac{50}{100}$ chains to a Beech Water Beech
 & ash, where I drove a stake & marked a
 Beech 7 Ln. Dim. N. 77° E. 15 links distant & an
 Elm 22 Ln. Dim. S. 4° E. 26 links; Thence N. 80°
 20' E. 40 chains to the afore said County line
 where I drove a stake & marked a Sour Elm
 8 Ln. Dim. S. $83\frac{1}{2}$ ° W. 30 links, a Hickory 6 Ln. Dim.
 S. $23\frac{3}{4}$ ° W. 24 links, & a forked Elm, each fork 13 Ln.
 Dim. N. 2° W. $21\frac{1}{2}$ links; Thence continuing the
 same course in Union County $27\frac{65}{100}$ chains
 to a stake in the East Original line of the said
 Survey, & a Sugar tree stump 24 Ln. Dim.
 S. $45\frac{1}{2}$ ° E. $3\frac{1}{2}$ links; Thence with the said east
 original line S. 10° E. (passing a stone, corner between
 Albert & Gomm Bird at $15\frac{40}{100}$ chains) $26\frac{10}{100}$ chains
 to the place of Beginning, containing $176\frac{12}{100}$
 Acres = From this measurement I also calculated
 the course & distance of that part of the afore-
 said county line passing through the aforesaid
 premises, or described Tract of Land, and find
 it to be S. 12° W. $26\frac{72}{100}$ chains, (or reversed.

bearing N. $1\frac{1}{2}$ E. 26 $\frac{79}{100}$ chains) and find that that part of the said tract of land lying & being in Logan County contains ninety seven acres & eighty nine hundredths of an acre ($97\frac{89}{100}$ acres) and that part of the said tract of land lying & being in Union County contains seventy eight acres & thirty hundredths of an acre.

Note All the witness trees whose courses & distances are given in the foregoing notes, are marked thus 'X' in the side facing the corner.

Isaac Simpson }
 Alex. Bolen } Chain Carrier
 I hereby certify the foregoing Plat and report to be correct, J. C. Moore
 Co. Surveyor of Logan Co. Va.

Survey No. 772 - V



fractional half of Section No 36, Town No. 6
 South of Range No. 7 East, in Logan & Shelby Counties,
 of the State of Ohio, as Surveyed by me, H. C.
 Moore, Co. Sur. of Logan Co., O., on the 3^d & 4th days
 of August A.D. 1858, for the purpose of finding
 & establishing the lines & corners of the East fractional
 half of the N.E. fractional quarter, and the S.W.
 quarter of the N.E. quarter of said Sect No. 36
 Town No. 6 & Range No. 7, for William Baggs,
 who owns & resides upon the said land.

The bearing & length of the lines are marked
 upon each, respectively, in the plat.

The corner trees are described in the notes
 to the right of the plat.

Wm Baggs land containing $101\frac{13}{100}$ Acres,
 Chokey Marsh

Sin ledger Neal } Chain men } first day
 George M^c Bride mk.

Henry Franks }
 Josiah Rush } Chain men } 2^d day
 Wm Baggs mk.

James B. M^c Laughlin } present both days
 Hanson Owen }

I here by certify the foregoing plat
 and Report to be correct, H. C. Moore, Sur. Logan Co., O.

8597

Survey No 793 } The Plat on the next page
 is a representation of Humphreys Addition to the
 town of Delraft, situated in the south side of Section
 No. 7, of Town No. 2, & Range No. 14 E. M. R. S. in Pleasant
 Township Logan Co. O. North of & adjacent to Robt's Addition
 Ever to the same. The North lines of Lots Nos 4, 28, 29, 50
 and "Mill Lot" are each 8 poles or 132 feet; The length
 of the other lines of those Lots are marked on each upon the
 plat. The other Lots are all 8. Each 4 by 8 poles