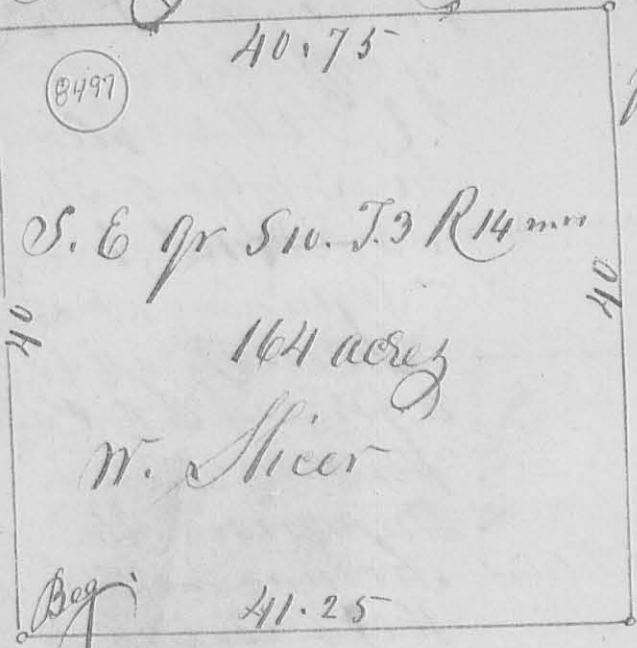
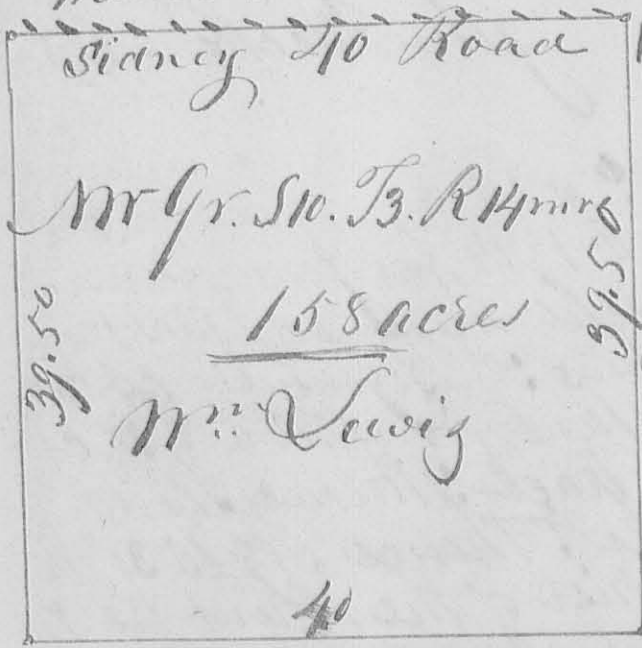


Survey No 5243



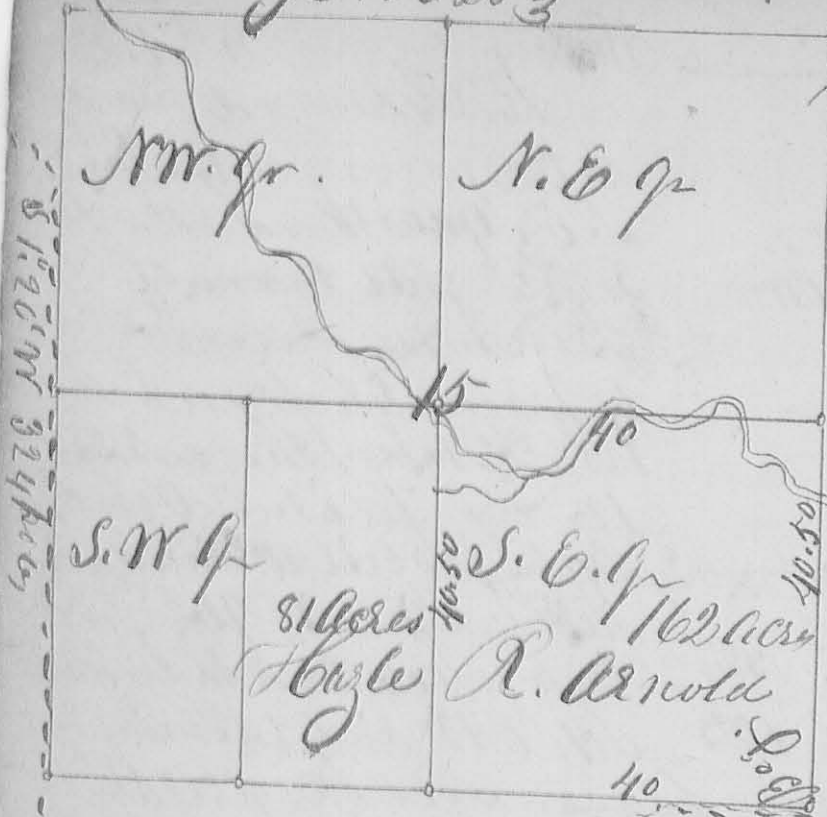
21

Surveyed April 11th 1844
 for R. Patterson Adm. of
 A. O. Spencer Dec. the
 S. E. quarter of Sec 10 Town
 3. Range 14 mrs as follows:
 Beginning at the S. E. corner
 of said qr sec. at a
 black 12 in diam. N 35° E
 12 links, a white oak 18 in
 diam. S 56° W 46 links;
 thence N 88° W 41.25 ch.
 to a white oak 15 in diam.
 S 40° E 12 links (the other tree
 is down) q. corner between sections 9 & 10; thence
 N 2° E 40 chains crossing a small branch to a Bar
 Oak 16 in diam. N 87° W 21 links, a white oak 16 in
 diam. S 75° E 71 links; thence S 88° E 40.75 ch.
 to a stone a white oak 8 in diam. S 18° W 43
 links a white oak 8 in diam. N 15° E 50 links
 thence with the east line of Sec 11 1/2 W 40 chains
 to the beginning containing
 164 acres.



The NW qr of S10 T3 R14
 as follows: Beg. at the NW
 cor. of said sec. at a stone
 a Hickory 24 in D. S 9° E 24
 links a white oak 12 in D
 N 29° E 9 links distant
 both trees down; thence
 S 88° E 40 chain to a stone;
 thence S 2° W 39.50 ch. to a
 Bar Oak 16 in D N 82° W 2
 links, a white oak 16 in D. S 75° E 71 links centre
 corner; thence N 88° W 40 chain crossing a prairie
 to a stake in the prairie; thence N 2° E 39.50 chain to
 the beginning. Containing 158 acres
 Wm Mechem C.

Survey No. 525



Surveyed 12th 4/3rd of office 1844 for W. Patterson Adm. the S.E. q. of S15. To R. Arnold. Beginning at a stake or post in a prairie S.E. cor. of said section; thence with the section line N 88 1/2 W 160 poles, to a white Oak in beam N 38 1/2 E 4 1/2 Links

to a red Oak 12 in d. a red Oak 12 in d. thence N 1 20 E 162 poles crossing a branch to white Oak 20 in d. N 1 20 E Links thence S 88 40 E 160 poles, crossing the branch several times, to a stake in section line; thence N 1 20 W 162 poles to the beginning containing 162 acres. John Mechem C.S.

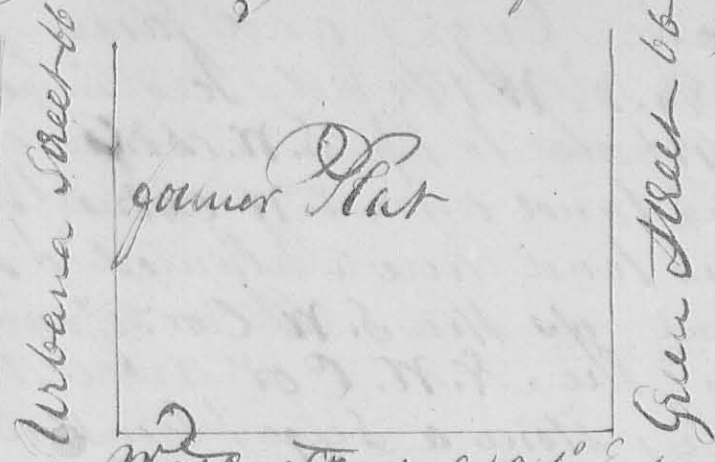
Survey No. 526

Surveyed for office 27th 1844 for John Pinner 1 acre and sixty eight hundredths part of Survey 313 as follows: Beginning at a stake 76 3/10 poles distant from the N.W. cor. of the Bishop north tract; thence S 15 E 42 3/10 poles to a stake; thence N 19 W 30 3/10 poles, to the S.W. corner of the Hunt tract; thence with the west line of said tract N 33 E 43 3/10 poles, to a stone S.E. corner to the Bishop land; thence with the north line thereof N 73 W 18 3/10 poles to the beginning. John Mechem C.S.

8271

Survey N^o 527

A



Surveyed June 5th 1844 for W^m Grubb, an location to the town of Middleburgh as represented by the annexed plat Lot N^o 103

Water Street S 42^o E 66 feet fronts on Water Street 132 feet

165 feet	132 feet
104	103

extending back to Grubb's line Lot N^o 104

fronts on water Street 165 feet extending back to Grubb's line planted a stone as represented on the plat by Christopher J. Chainmen
Benj. Grubb

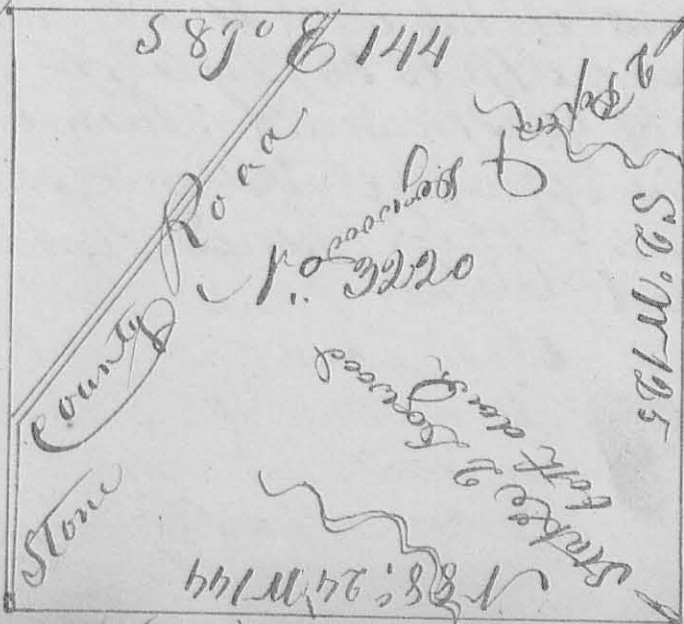
Survey N^o 528

Surveyed June 24th 1844 for Vincent

By

Hughes as follows: Beginning at Hughes North West Corner

8499



Run S 89^o E 144 poles to 2 Poplar and Dogwood the Dogwood is gone; thence S 2^o W 125 poles crossing a branch at 28 poles to 2 Dogwood, (down N. W. corner Joseph Hillen thence run the line between

5.

between said Hughz and James J. Costin $N 88^{\circ} 24' W$ 144 poles crossing a branch at 48 poles to the S.W. corner of said Hughz land and N.W. corner of said Costin's land here I planted a stone by agreement as the S.W. Cor. of said Hughz and the N.W. Cor of said Costin land from this stone a Sugar tree 18 in diameter bears $N 50' W$ 39 links present at planting said Stone Joseph Dickinson Archibald Walker of Garwood V. Hughz Samuel R. Costin, James S. Costin, James Walker, and Andrew Sperry.

Jo. Dickinson & Co John Michern S. L. L.
Arch. Walker & Co

8768

SURVEY No. 529

Surveyed August 19th 1844 for Richard Cadee as follows; Beginning at the S.E. corner of the S.E. Quarter of Sec. No. 5. T.3. R. 14 thence $N 1 \frac{1}{2}^{\circ} E$ 66 ²/₃ poles, to a Stake on the South side of a small drain near a small Hickory stump; thence $N 88 \frac{1}{4}^{\circ} W$ 166 poles to a white Oak 18 inches in diameter 35 ¹/₂ E 23 links distant in the west line of said section; thence $S 1 \frac{1}{2}^{\circ} W$ 66 ²/₃ poles, to the SW corner of said Quarter Section; thence $S 88 \frac{1}{4}^{\circ} E$ 166 poles, to the beginning, containing 66 ²/₃ acres

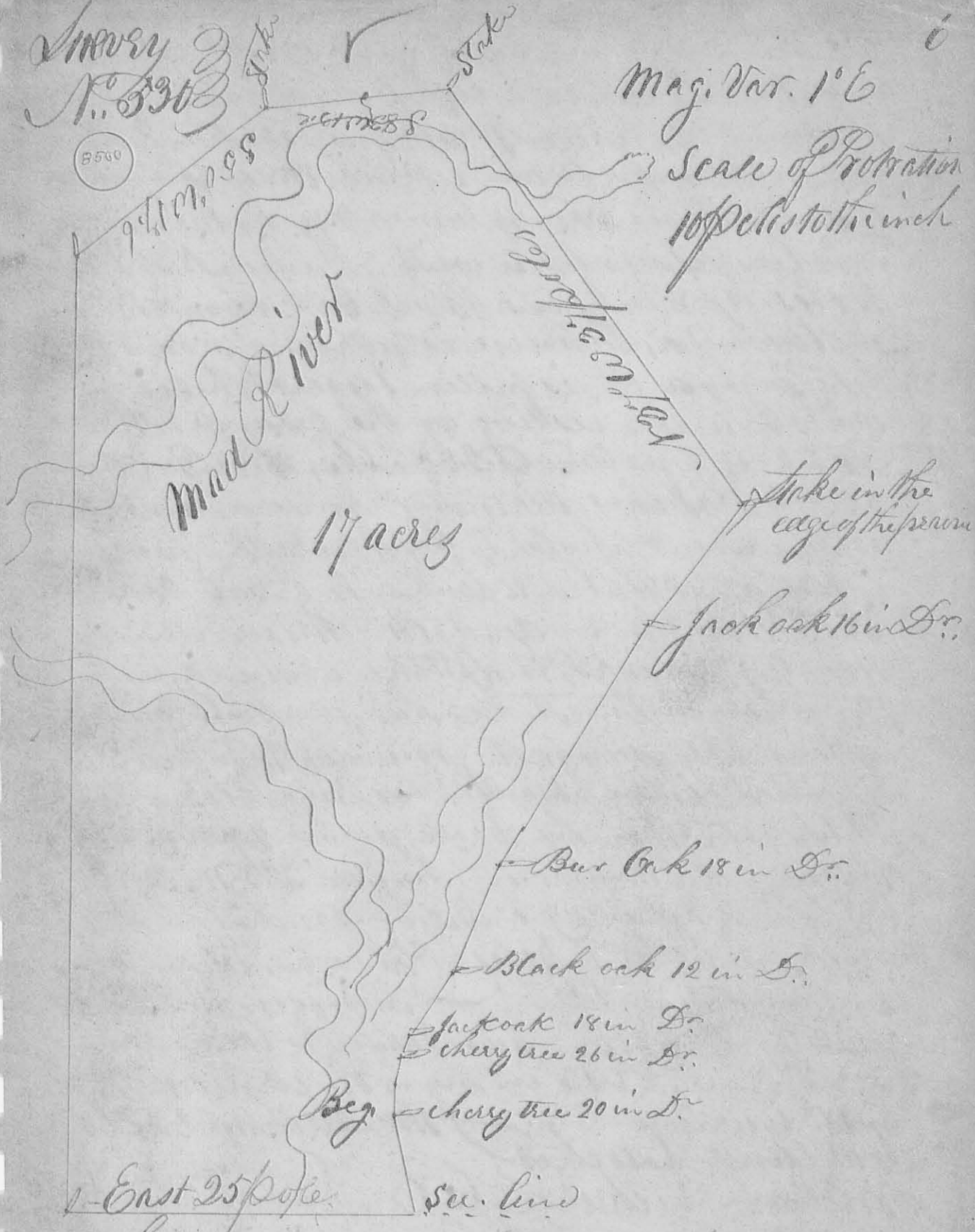
John Good & Co John Michern & Co
Sam. Miller & Co

Mayer
No. 330

8500

Mag. Var. 1° E

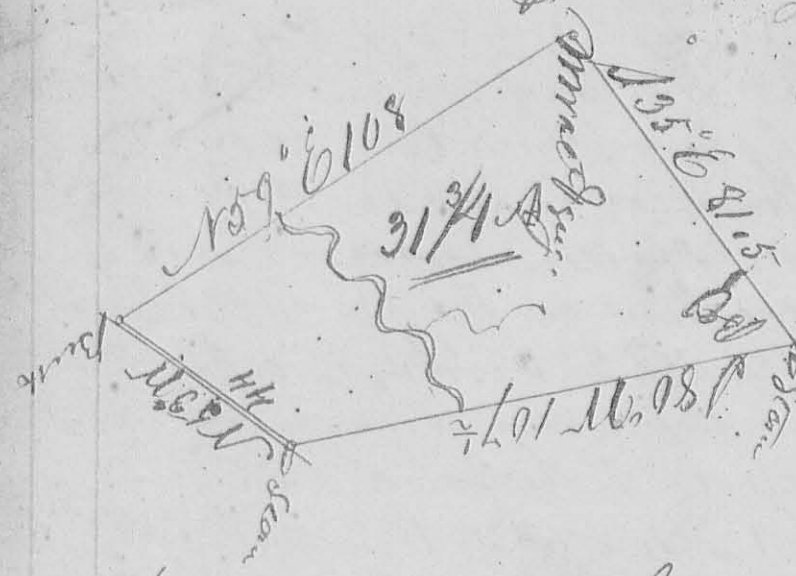
Scale of Protraction
100 poles to the inch



Surveyed Augt. 30th 1844 for Israel Finney as follows; Beginning at a cherry tree about 20 in diameter this tree is down, and the root of the tree bears N 9° W 7 1/10 poles from a stake in the north line of Section 26. T5. R 13 this stake is 25 poles east of the NW corner of the section; thence N 5 1/2 E 4 poles and 2 links to a cherry tree about 26 in diameter

This tree is partly dead; thence $N 19^{\circ} E$ 1 pole
and 18 links, to a Jack Oak about 18 inches
in diameter, here we found the water in mad
river 20 links to our left hand at the mouth
of a Branch this tree is turned up by the roots
and lies towards the west; thence $N 35^{\circ} E$
6 poles & 1 link to a Black Oak about 12 inches
in diameter, this tree is broken off about 15
feet high and is fallen towards the east
with the top resting on the ground; thence
 $N 20^{\circ} E$ 8 poles and 20 links, to a Bur Oak
about 18 inches diameter here we found
water about 1 pole to left hand; thence
 $N 30^{\circ} E$ 20 poles & 11 links, to a Bur Oak
about 16 inches in diameter; thence $N 33^{\circ} E$
11 poles & 3 links, to a stake in the edge of
the prairie, this stake stands about one
pole & a half from fast ground; thence $N 37^{\circ} W$
37 poles crossing Mad River, to a stake, this
stake stands on the bank about 2 poles from
the edge of the prairie; thence $S 83^{\circ} W$ 13 poles
& 5 links, crossing a Spring branch to a stake
thence $S 50^{\circ} W$ 17 poles & 15 links, to a stake
in the Section line; — Surveyed for Isaac
Powers as above; this Survey is located on
Sec 27, T. 5. R. 13 in the S. W. corner of the
S. W. Quarter
Garland Crocker
William Vickers C. C.

Surveyed May 26th 1844 for Benjamin Michener part of Survey No. 4928, 9423 & 9876 as follows: - Beginning at a Stone in a line of James Tayborn corner to the

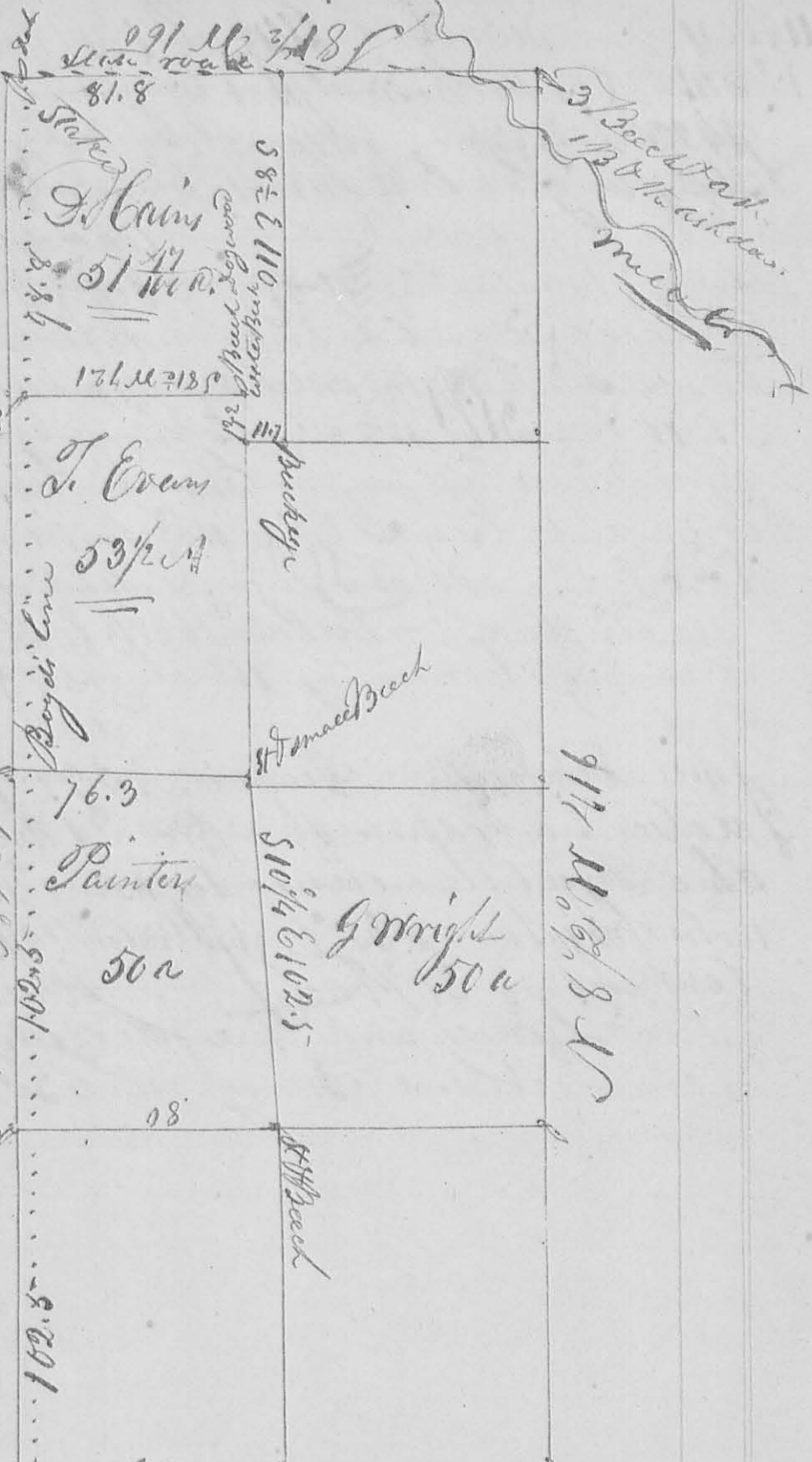


Apican meeting house Lot: thence S 80° W 107 1/2 poles crossing a branch at 72 1/2 poles to a Stone NW to Crawford Byrd's land: thence N 54° W 44 poles to a Beech 6 inches diameter N 54° W 44 Sinks distant corner to

John Michener: thence N 59° E 108 poles crossing a branch to a Stone White Walnut and Sugar tree corner to James Tayborn: thence with the line N 35° E 81 1/2 poles, to the beginning containing 31 3/4 acres John Michener C. S. C. Co

2
Survey
No. 532

8501



Beck road
and
logwood

Beck
cork
117 1/2

County Road
small
standing
the
cork

Beck
the
Beck
Hick
down

- V

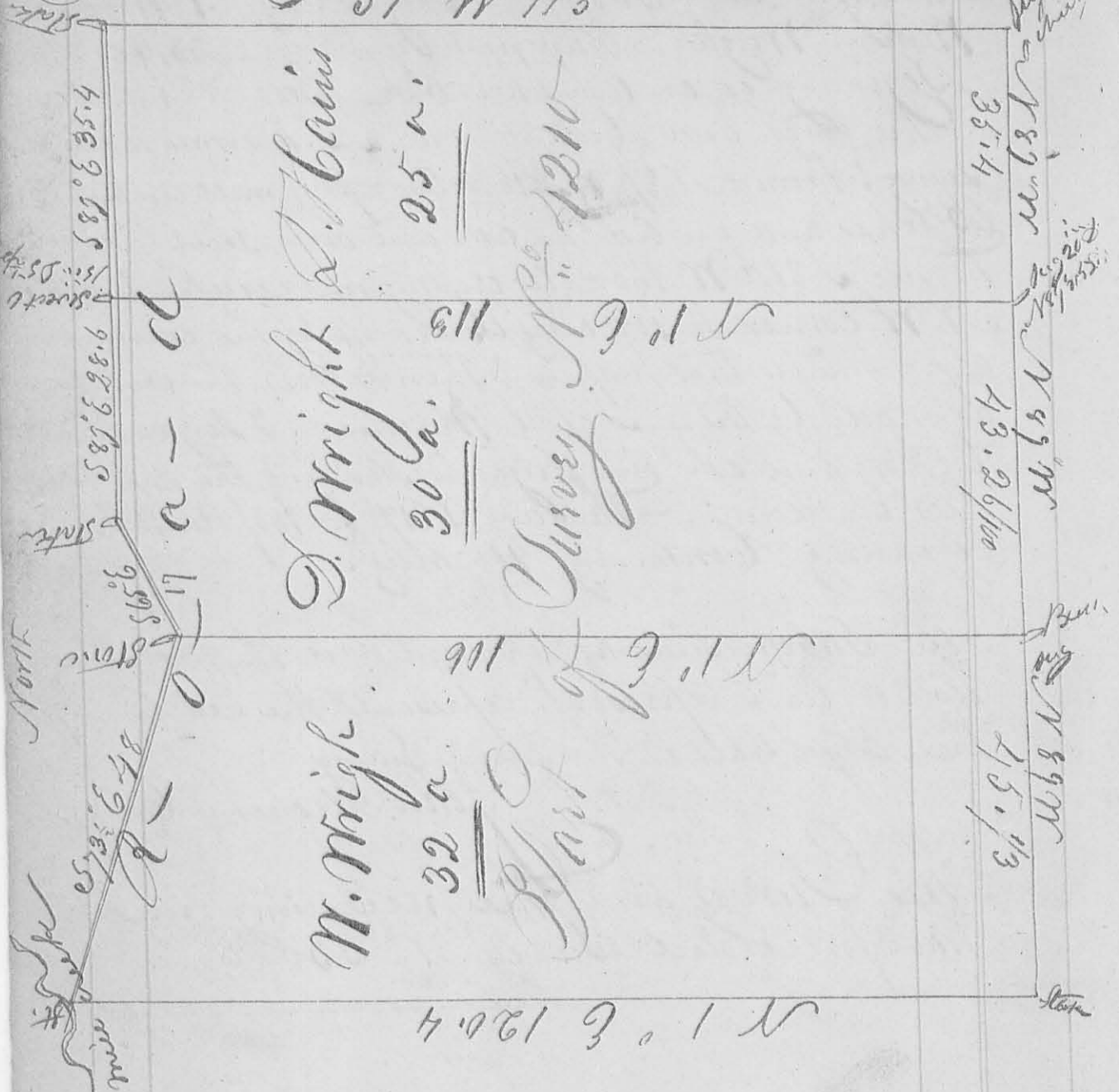
Surveyed and Subdivided Aug. 28, 29th. 1844 for
 Nathan Wright & Others part of Survey No. 3314 as follows.
 Beginning at an Ash white oak Beech & Hickory
 The Beech and Hickory is down S. E. corner to said
 survey; thence N 8 1/2° W 416 poles crossing mill creek to 3
 Beeches and an ash the ash and one Beech is down;
 thence S 8 1/2° W 160 poles crossing mill creek to a stake
 N. W. corner to 400 acries as set off by the commissioners
 appointed for that purpose; thence with the west line
 as made by them S 8 1/2° E 416 poles to 2 sugars small
 Hickory and ash one sugar is standing the other corner
 trees are down; - thence N 8 1/2° E 160 poles to the
 beginning containing 416 acries.

The Subdivisions as represented on the plat the
 dotted line represents represents the east line of
 the Boyd tract in the same Survey

John Mcchem C. D. S. C.

This Survey and the preceding one should
 have preceded Survey No. 530.

Survey No. 533. ✓
S 1° W 113

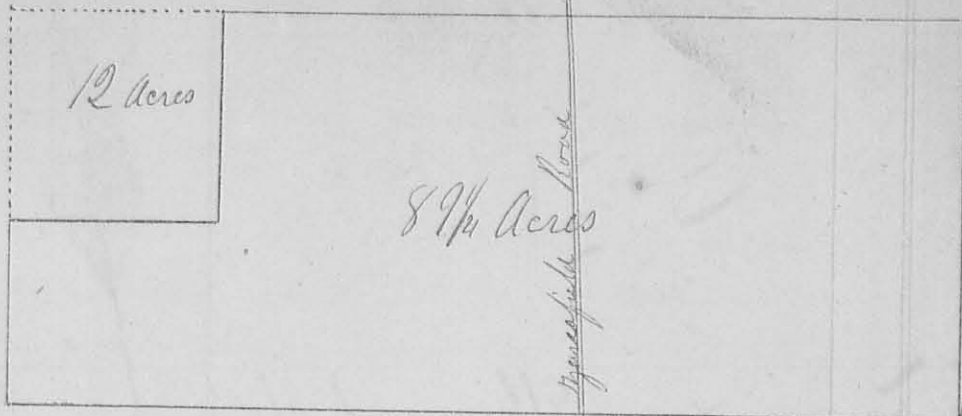


Surveyed and Subdivided part of Survey
 No. 4210 Sept. 2^d. 1844 for William
 Wright and Others as represented by
 the annexed Plat.
 John Meehan
 Co. & Co.

8503

2

Survey
No 534



Surveyed December 30th 1824 Eighty nine and one fourth
 Acres of land for Alexander Ferguson, assignee of John
 Marquis, said Marquis being the assignee of Walter Slicer,
 who presented to me a certificate from George Krouskop
 Auditor of Logan County, Dated Dec 11th 1823 certifying
 that 89 1/4 acres of land in Rushcreek Township is
 forfeited to the State of Ohio for the non payment of
 taxes and sold to Walter Slicer in the name of John
 Evans, being part of Military Survey No 42 536,
 Acres 89 1/4, Value \$271, Years due 1837 to 43
 Amount of tax \$21. 82 cts 1/2 Mills, I proceeded to
 Ascertain the tract of land described in auditors certifi-
 cate and order, Beginning at 1 Sugar & C Corner to
 Margaret Gallways land in the South line of Survey
 (No 10634) run S 70° 10' E 81 poles to 2 Sugars a Beech
 and a Stone, then S 79° 50' W 250 poles to a Sugar and
 2 Beech (Sugar Down) then N 10° 10' W 38.2 poles to 2
 Beech & Stone Equi distant between the two Beech then N 79° 50'
 E 43.8 poles to a Stone then N 10° 10' W 43.8 poles to 3 Beech
 in said Margaret Gallways South line then with said line
 N 79° 50' E 156.2 poles to the Beginning containing 89 1/4 Acres

Ferguson } Chen
 Ferguson | " "
 Ferguson Mr

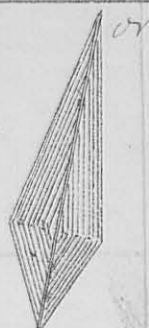
A Harrison
 C S Loco

A

County Road ✓

B

8564

Surrey
no 535

D

Line established

C

January 28th 1845 and by adjournment on account of inclement weather until the 8th of May 1845 on presentation to me of the following Notice and being satisfied that it had been served at least twenty days previous to date as follows "To Isaac Pratt, Richard McClure, Robert Lee, William Carr and William Collins, This is to notify you and each of you that on the 28th day of January 1845 by Alexander Morrison County Surveyor within and for the County of Logan, we intend upon said day above named to have the South line of our land surveyed and the corners correctly established. You will therefore meet with us on said day at ten o'clock December 31 1844

Thomas Ferguson
Jah Platt

I proceeded to make survey of the ground by beginning in a County road at a White Oak & Ash (Ash down) North East corner to survey no 9888 and chained with the East line of said

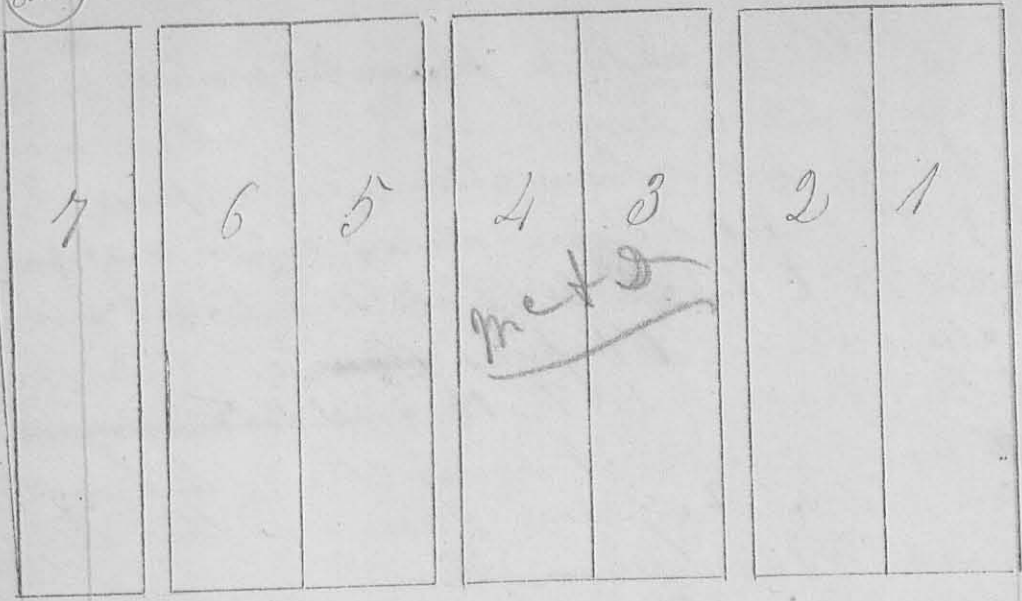
Survey 160 poles to a ^{pin} ~~point~~ ^{at} water bank ^{vicinity} and where
 I planted a Stone Benjamin Shoo, William Stewart,
 Jos Miller, and William Thompson present, it
 being the exact distance deduced to Thomas Furgason
 then N 78° E 148 poles links to a point where I
 planted a Stone 160 poles ~~from~~ in John Piatts
 west line from said Piatts & ~~Thomas Furgason's~~
 North West corner it being the exact distance
 deduced to said Furgason present Arthur Roberts,
 & Lanson Thompson,
 At A is a Stone and at B said to be planted by
 D Hopkins from which the above measure-
 ments of 160 poles were made

} c l c r
 } " " A. Harrison
 A Roberts Mk 140 C. S. L. Co

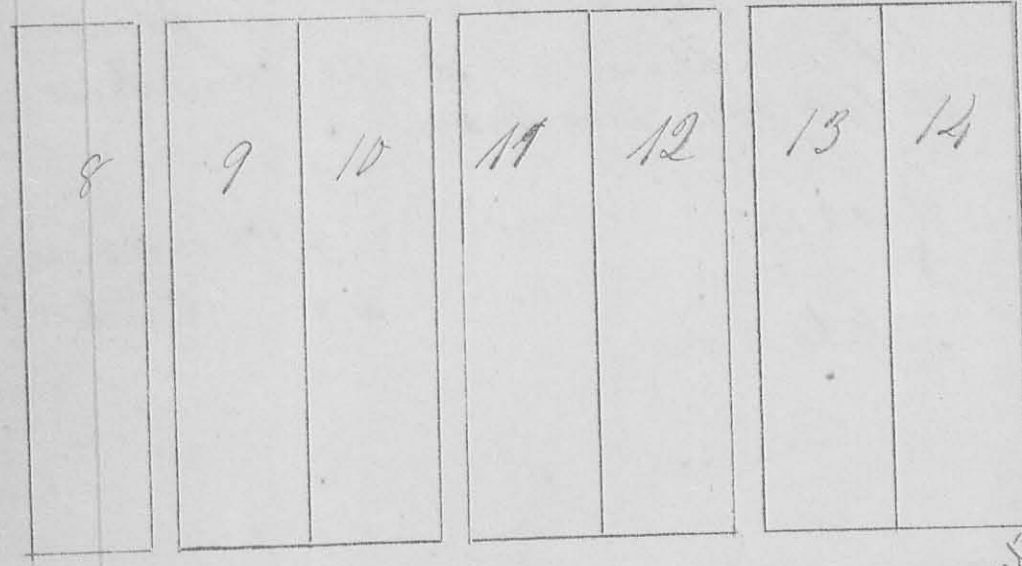
15
8505

✓

1/2
5/16



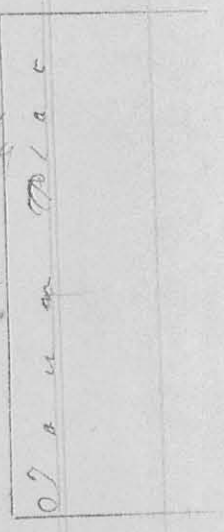
Sunny
536



Brick concrete
5

The Annexed diagram represents fourteen lots laid out in the N E Corner of the W gr of Sect 34, T2, R 14, P. 30, called Western Bellefontaine, as follows: Beginning S 9 1/2 N 30 ft & N 8 1/2 W 11 ft from the N E Corner of said quarter section, for the N E Corner of Lot 1, Lots N 7 to 7 inclusive are laid off fronting on the Bellefontaine and Port Jefferson free turnpike & running with its course N 8 1/2 W 55 feet each and extending back at right angles 237 feet to an Alley 20 feet wide

Chilcather street



Lots 8 to 14 inclusive front on
 a space 60 feet wide, being an ex-
 tension of Chilcote Street west-
 ward, and are 55 feet front by 220
 feet back, The alleys are each 11
 feet wide, excepting the one at the
 rear of the lots which is 20 feet
 wide, Lots 1 to 7 have 13035 square
 feet, The others, contain each
 12100 square feet

A stam is planted S 87 1/2 E 11 feet
 from the N E corner of Lot 10 of
 and one S 87 1/2 E 11 feet from the
 S E corner of Lot 12

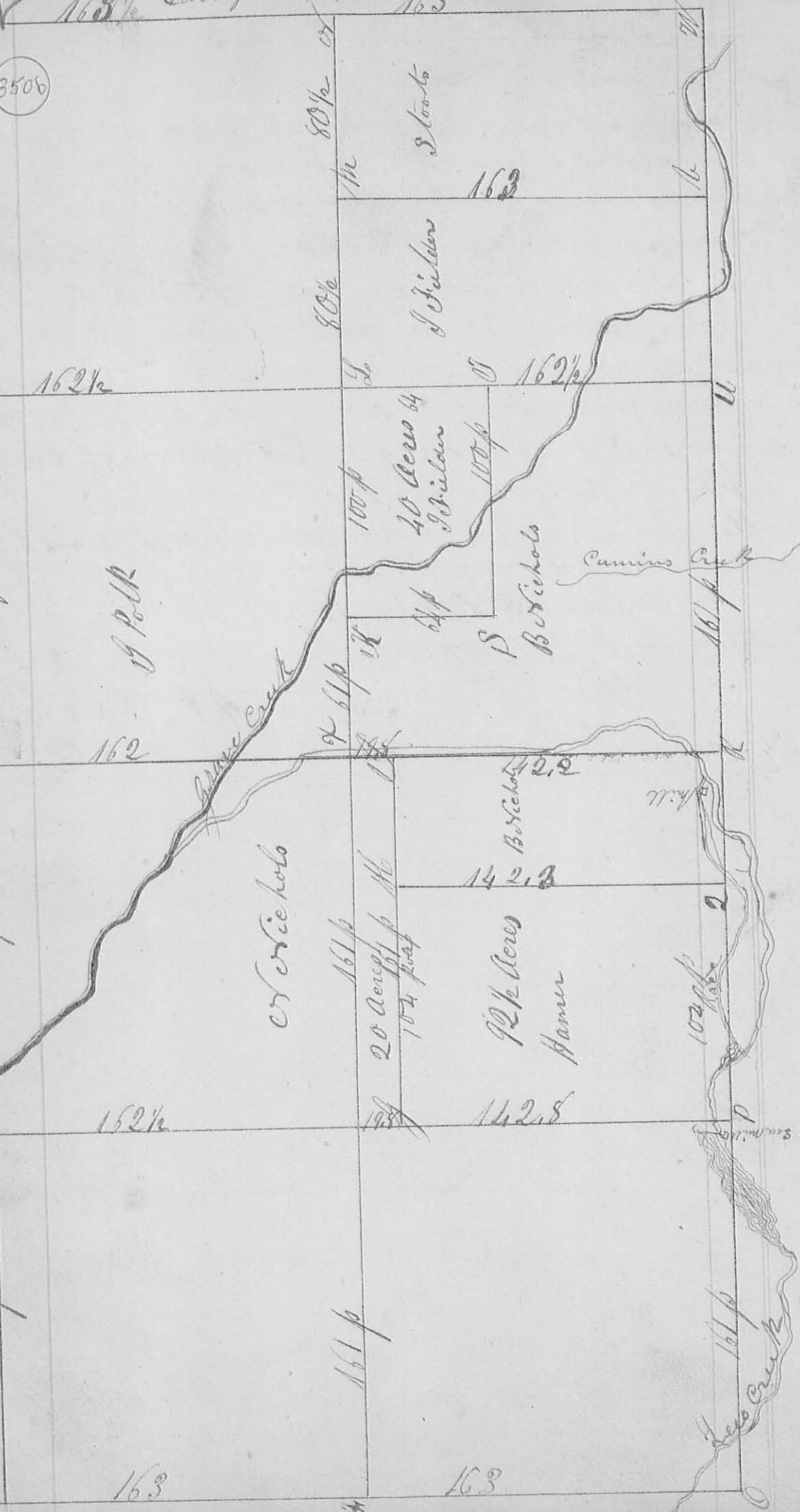
May 2 1845 - A. J. Harrison
 C S Z C

Survey 537

8506

163 1/2 Survey no 537 163

A 161 p B 161 p C 161 p D 161 p



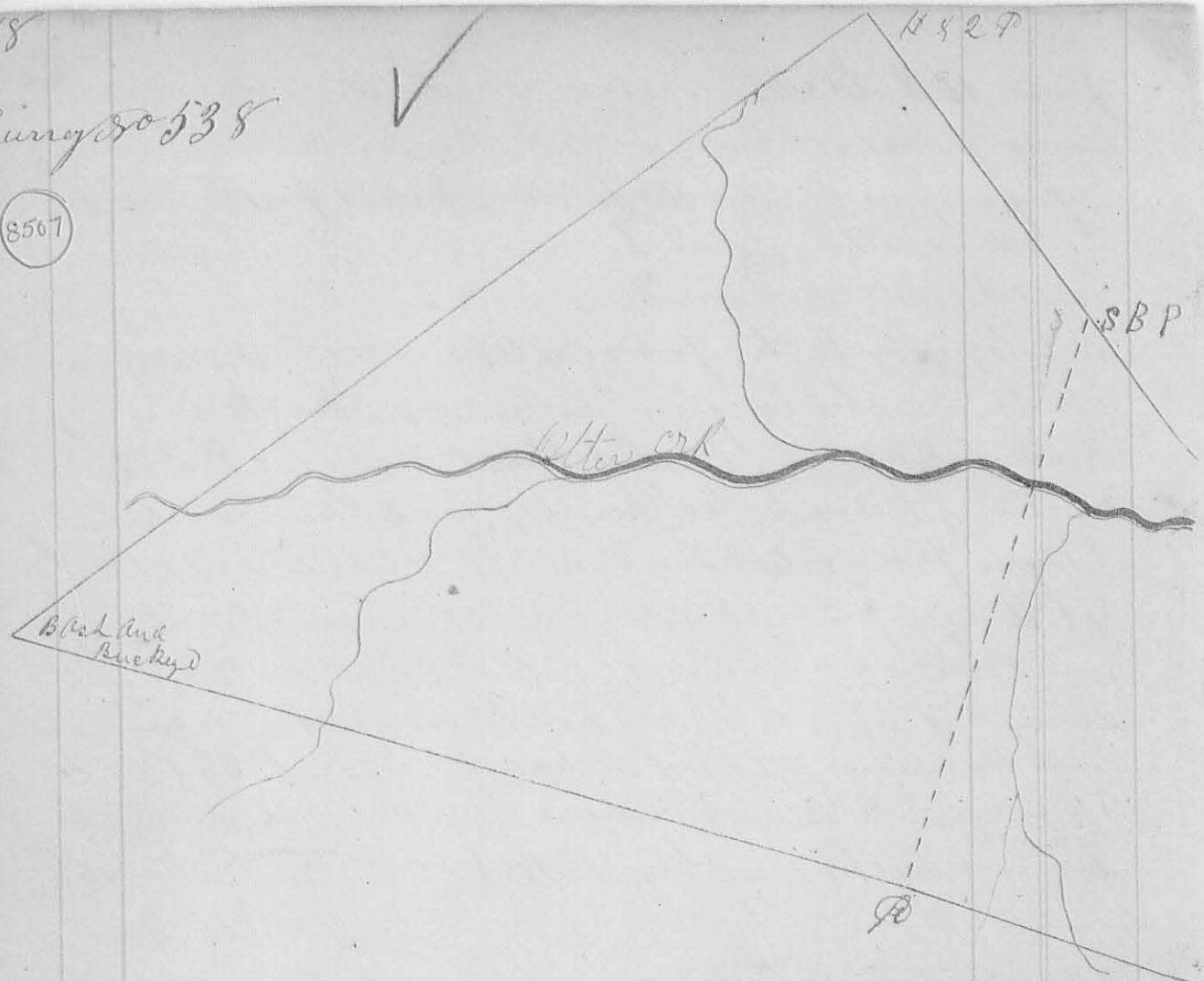
June 10th Being presented with the following Notice
 & being satisfied the same had been served at least twenty
 days previous to date. As follows; Messrs Paul Dueston
 James Keeton, Saml Lee, Nicholas, John Merrill,
 Amos Chester, William Hamer, Minian Nichols, John
 Nichols, Geby Polk, James Cretcher, Fred Moore, Jacob
 Stoots, Dant Strayer, Jas Archer, Wm McCale,
 Heirs of Wm Lee, Christ Hart, Charles Moots, Isiah
 Dueston, Michael Mellhorn, Johnathan Jones, Linday
 A Page, John Notetion, You are hereby notified that on
 the 10th day of June AD 1845 we will have our lands surveyed
 & our corners & lines creectly established by the County
 Surveyor of Logan Co to do which it is necessary to have Estab-
 lish the corners & lines of Section 1, T3, Range 13 & Sec 34,
 T4, Range, and the subdivision lines & corners in said
 Sections this 13 Day of May AD 1845
 B Nichols
 Jas Fielder

I proceeded to survey the ground according to the above plat & the
 following Notes

- A = Stake Volant 1020 or 37" W 33, C-10-10, 1099, or 577 220 &
- B = W O 16 " or 55 2 20 W = ~~planted~~ stone Stake
- " W O 14 " or 68 W 30 J = "planted stone" in ditch
- C = where corner equal upon by James Cretcher Y = planted stone in ditch
- Cherry plantation, ours, planted stone
- Wm Lee's found stake set by Mammor
- R = in Prairie, the trees, planted stone
- D = Stone planted by surveyor of Clayburg
- P = planted stone
- Q = planted stone
- G = Stake "
- A B = 322 poles, C E = 322 poles, D R = 322 poles, A W = 322 p
- A D = 327 poles, C R = 324 poles, E W = 325 poles
- Henry Hoover } C A Cr
- Calvin Cornell } " " A J Harrison
- C S L Co Co

Survey No 538

8507



Surveyed June 13, 1845 for the trustees of Mary A Thurman the following tract of land, being Survey No 9371 & 12174, Beginning at B Beech corner to H Reyners land run N 72° W 78 1/2 poles to H Reyners N W corner then N 74° 15' W 212 poles to a Black and Buckeye then N 53° 45' E 220 poles to Hickory & 2 poplars passing Blk walnut, B and Hackberry at 43 poles, Otter creek at 46 poles, Spring Branch at 208 poles, then S 35° 50' E 172 poles to P, R O, & Sugar, then S 55° 40' W 94 poles to Poplar & 2 Beech (one Beech down) then S 11° W 77.8 poles to the beginning containing 202 2/100 acres

At the same time divided said land as follows.

Lot No 1. Beginning at Blue Oak & Buckeye run N 53° 45' E 220 poles to Hickory & 2 Poplars (one Poplar gone, the other a dead stump) passing Black Walnut, B, & Hackberry at 43 poles Otter creek at 46 and Spring Branch at 208 poles, then S 35° 50' E

83 poles to a Poplar Beech & Sugar then S
16° 50' W 141 poles to H Reymers & W corner
passing Otter creek at 45 poles then S 74°
15' W 212 poles to the Beginning Containing
152 ⁵⁰/₁₀₀ Acres

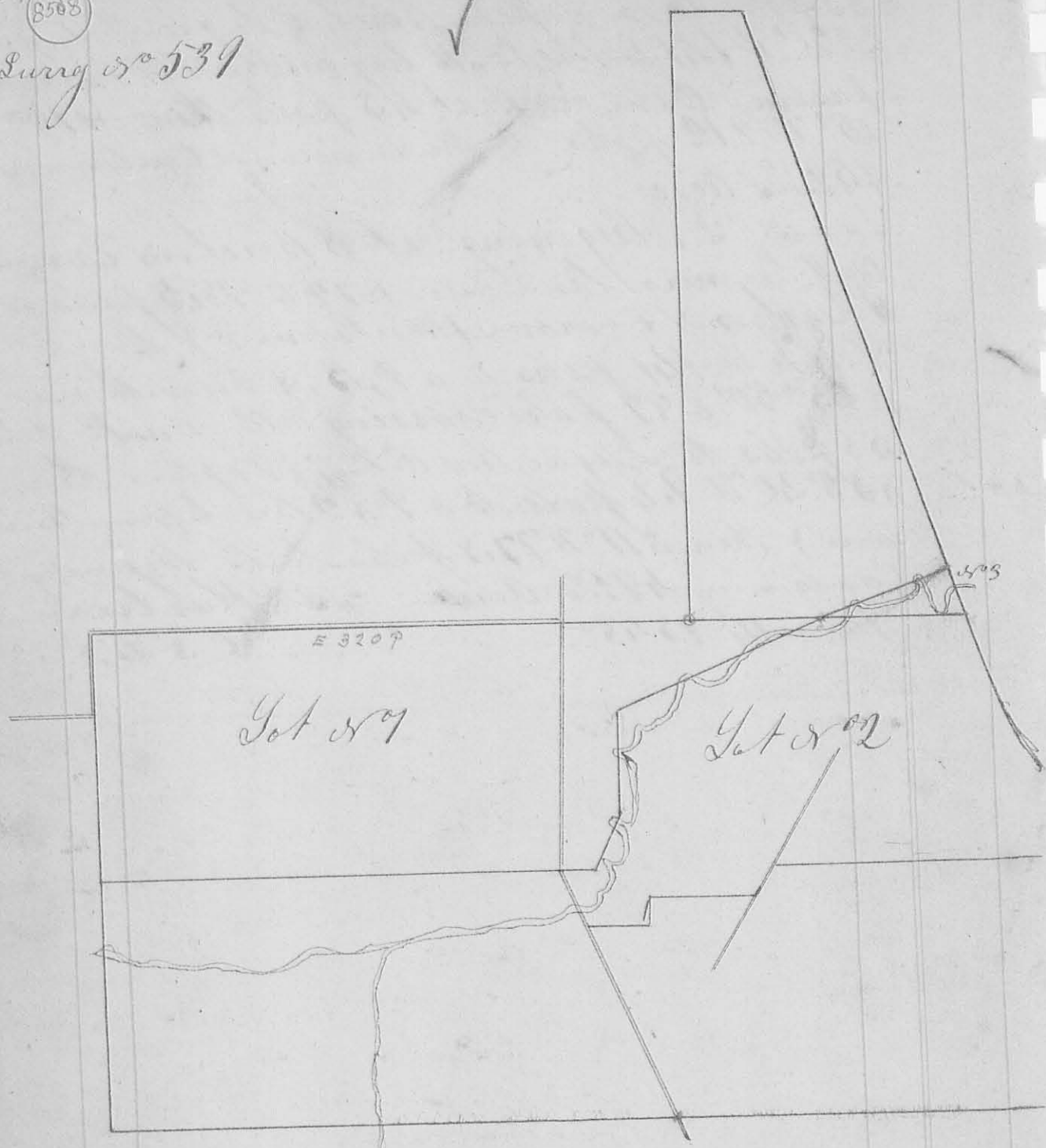
Lot No 2, Beginning at B Beech & E corner
to H Reymers land run S 72° W 78.5 poles to
H Reymers & E corner (marked on P) then
N 16 1/2° W 141 poles to a P, B, & Sugar then
S 35° 50' E 89 poles crossing Otter creek at
56 poles to Sugar, Red Oak, & Poplar then
S 53° 20' W 9.4 poles to a P & 2 Beech (one Beech
gone) then S 11° W 77.8 poles to the Beginning
Containing 49 ⁵⁰/₁₀₀ Acres A. A. Harrison
June 14 1845 C. S. G. C.



S B

20. (8508)

Survey No 539



Surveyed July 25 & 26th 1845 for Benjamin M. Pratt the following lots of land being parts of sections 21, 15 & 16 in Town 5, Range 13 East as follows

Lot No 1 Beginning at a Stake in the West Liberty Road corner to sections 21, 22, 27, 28, run East with the ^{or Platt} section line of sect 21, 320 poles to corner of sect 21 & 15, 386 poles to Stake in (Dry) channel of

Creek, crossing Otter creek at 42 poles and
 Urbana & Mansfield road at 252 poles, then
 S 63 1/2 W 121 poles to stone in edge of prairie 129
 links S 52 W from a Run Oak crossing Mackajack
 Creek several times then S 1 1/2 W 48 poles 7 links
 to a stone on bank of creek crossing creek at 8 1/2
 & 12 poles then S 31 W 32 poles 9 links to a stone
 crossing creek 1/2 & 1/2 poles then West 262.5 poles
 to a stone in West line of Section 21, then with said
 line North 130 poles 7 links to the beginning
 Containing 24 4/100 Acres

Lot No 2

Beginning at 2 Jack Oaks corner to Sections 15 &
 16, on the Lullaw line & run with said line S 20 E
 143 poles to a stone then West 15 3/4 poles to a stone
 in the East & West Liberty road then with said road S
 2 1/2 W 18 poles to a stone in centre of said road then
~~S 88 1/2 W~~ S 88 1/2 W 57.5 poles to a stone then S 7 1/2 W 18.5
 poles to a stone in lane at South West corner of
 Orchard then N 88 1/2 W 33 poles to a stone in centre
 of Mansfield & Urbana road then N 23 1/2 W 32.4 poles
 to a stone in centre of said road where South line of
 Lot No 1 crosses said road then East 17.5 poles to a
 stone corner to Lot No 1 then N 31 E 32 poles 9 links
 to a stone on bank creek crossing creek at 268 32
 poles, then N 14 E 48 poles 7 links to a stone in edge of
 prairie 129 links S 52 W from a Run Oak crossing creek
 at 368 40 poles then N 63 1/2 E 121 poles to a stone in
 (Dry) channel of creek then East 77 poles to the beginning
 Containing 165 7/100 Acres

Lot No 3

Beginning as in Lot No 2 & run West 77 poles to a stone
 in (Dry) channel of creek corner to Lot No 1 & 2 then
 N 73 1/4 E 73 poles to a stone in the Lullaw line then
 with said line S 20 E 24 poles crossing creek at
 8 poles to the beginning containing 11 Acres being part of Section 15,
 Town 8, Range 13 East
 Wm Smith } Cler
 Nathan Hering } " " A. H. H. H. H.
 C. S. L. C.

22
Surrey
87640

8509

Surveyed July 31st 1840 for Deborah Carley
the following described tract of land being her
Dowers Estate as set off by John Dery, James Shelby
& James Casbolt, being ~~part~~ forty five acres of land
described as follows, beginning at the south west
corner of the South East quarter of Sect or 24, Town
78, Range 8 E, Run East with the section line 90
poles to a stake in said line then north 80 poles to
the line between said land & John Hogges land
to a stake then 90 poles West to a stake in the line
between said land & Daniel Dearduffs land, said
stake being part or $83\frac{1}{4}$ W 77 links from a Black
Walnut 9 inches in D.T. & $82\frac{1}{2}$ E 125 links from a
Black Walnut 11 inches in D.T. then South 80 poles
to the beginning containing 45 acres

Robt Howell } Ch Cr
Benet } " "

A Harrison
C S Le Co O

Know all Men by these presents that we Deborah
Carley & John Hogge of the County of Logan & State of
Ohio being interested in the above survey, do hereby agree
that the Corner made & established as the North
West corner of said above mentioned ~~tract~~
Dower Estate, shall be the corner between us, being
a stake or $83\frac{1}{4}$ W 77 links from a Black Walnut
9 inches in D.T. & $82\frac{1}{2}$ E 125 links from a Black
Walnut 11 inches in D.T.

In testimony whereof we have hereunto set our
hands & seal this the first Day of August 1840

A Harrison } attest
Robert Howell }

Deborah Carley }
John Hogge }
L.S.
L.S.

Survey
or 541

Surveyed for Isaac Cooper the following lot of land
being part of Sect 23 T 7 S Range 8 East
Beginning at a stake 45 links S 88° W from a oak
COP 10 inches in dia & run S 87 1/4° W 13.3 poles to a
stone then N 2 1/4° W 6 poles to a stake then N 87 1/4° E
13.3 poles to a stake then S 2 1/4° E to the beginning
Containing ⁵⁰/₁₀₀ Acre

Also at the same time for Harford the follow-
ing lot being part of Sect 24, T 7 S, Range 8 E &
Beginning as above run S 2 1/4° E 6 poles to a stake then
S 87 1/4° W 13.3 poles to a stake then N 2 1/4° W 6 poles to a
stone then N 87 1/4° E 13.3 poles to the beginning con-
taining ⁵⁰/₁₀₀ acres

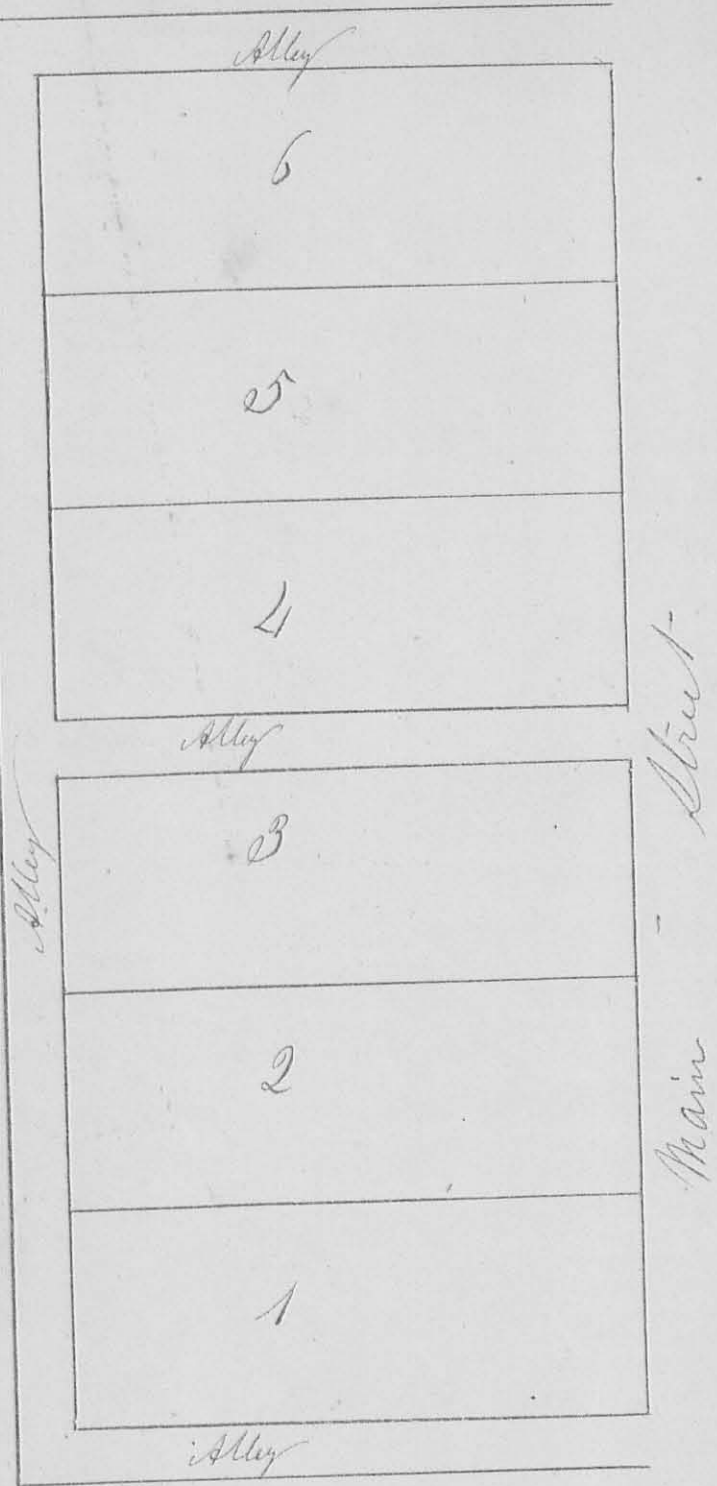
this 3rd July 1845

A. Harrison
C. S. Co. R

24
8263

Survey
No 542

North South



This plat must be reversed in order to be drawn exactly correct
 being at the South End of the Addition or of at the North End

The Above plat represents Harrens Addition to the Cherokee
 Made August 1st 1845 by Harrens, being part of Survey
 No 9902, Planted a stone with west side of Main Street
 & South side of North Alley in said addition. Lots each front
 55 feet on Main Street & extend 155 ft. back, There is one
 Alley north of Lot No 1, one north of Lot No 4 & one south of Lot No 6 &
 one running parallel with Main Street at the East side of said addition each 16
 ft wide, Course of Main Street same as in Old plat of town, Crossover alleys
 at right angles
 A. J. Harrison C. S. G. Co. &

