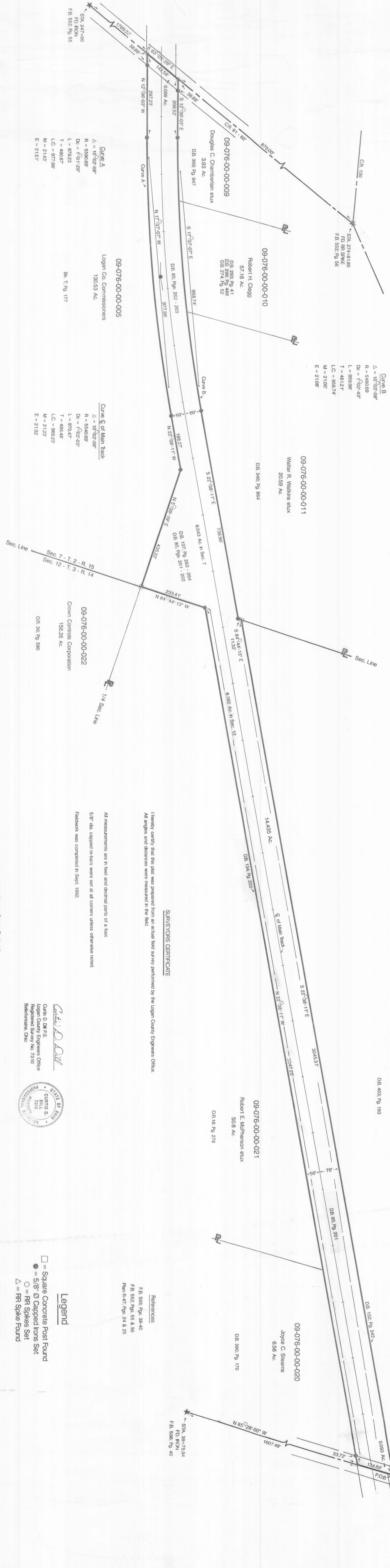


SURVEY OF CONRAIL PROPERTY
HARRISON TOWNSHIP
LOGAN COUNTY, OHIO

Sec. 7 - T. 2 - R. 15
&
Sec. 12 - T. 3 - R. 14

May 1993

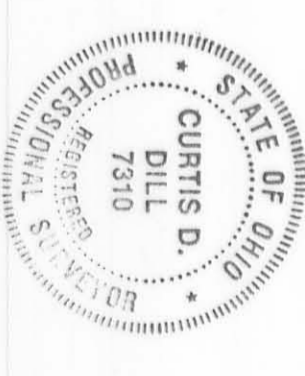


I hereby certify that this plat was prepared from an actual field survey performed by the Logan County Engineers Office.
 All angles and distances were measured in the field.

SURVEYORS CERTIFICATE

All measurements are in feet and decimal parts of a foot.
 5/8" dia. capped re-bars were set at all corners unless otherwise noted.
 Fieldwork was completed in Sept. 1992.

Charles D. P.S.
 CURTIS D.
 Logan County Engineers Office
 Registered Survey No. 7310
 Bellefontaine, Ohio



- Legend**
- = Square Concrete Post Found
 - = 5/8" Ø Capped Iron Set
 - = RR Spikes Set
 - △ = RR Spike Found

Scale: 1" = 100'

Caps placed on irons set are stamped "Logan County Engineer".
 Basis of Bearing being the center line of CR 13 (N. 85°-28'-00" W.) as shown in Field Book No. 598, page 38.