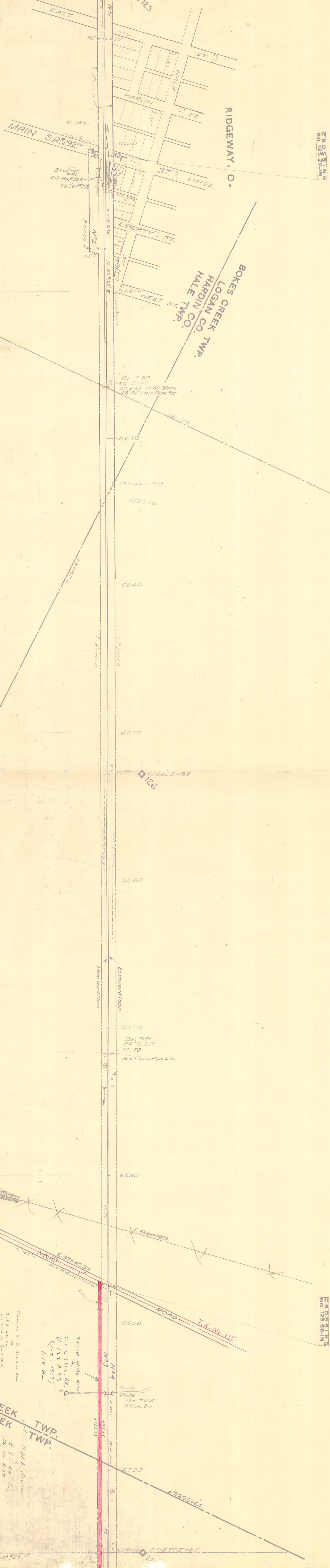


Match Mark for Sheet #22.

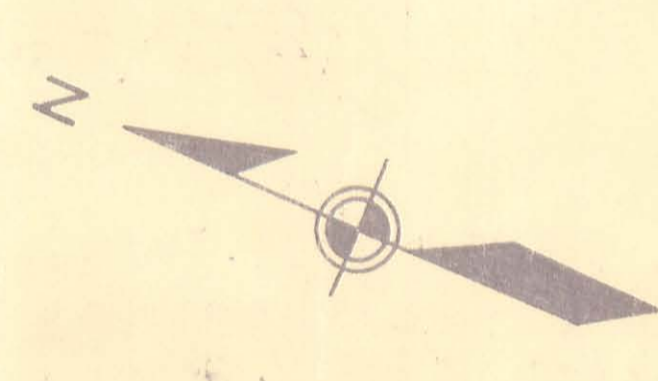
100.6600-03



CROSSING  
NO. 125, 20-IN.

CROSSING  
NO. 125, 30-IN.

Item	A.F.E.	Completion Month
1. 1916	51	1916
2. 1916	50	1916
3. 1916	50	1916
4. 1916	50	1916
5. 1916	50	1916
6. 1916	50	1916
7. 1916	50	1916
8. 1916	50	1916
9. 1916	50	1916
10. 1916	50	1916
11. 1916	50	1916
12. 1916	50	1916
13. 1916	50	1916
14. 1916	50	1916
15. 1916	50	1916
16. 1916	50	1916
17. 1916	50	1916
18. 1916	50	1916
19. 1916	50	1916
20. 1916	50	1916
21. 1916	50	1916
22. 1916	50	1916
23. 1916	50	1916
24. 1916	50	1916
25. 1916	50	1916
26. 1916	50	1916
27. 1916	50	1916
28. 1916	50	1916
29. 1916	50	1916
30. 1916	50	1916
31. 1916	50	1916
32. 1916	50	1916
33. 1916	50	1916
34. 1916	50	1916
35. 1916	50	1916
36. 1916	50	1916
37. 1916	50	1916
38. 1916	50	1916
39. 1916	50	1916
40. 1916	50	1916
41. 1916	50	1916
42. 1916	50	1916
43. 1916	50	1916
44. 1916	50	1916
45. 1916	50	1916
46. 1916	50	1916
47. 1916	50	1916
48. 1916	50	1916
49. 1916	50	1916
50. 1916	50	1916



1951	4-27-53
1952	No Change
1953	"
1954	"
1955	"
1956	11-3-58
1957	2-5-60
1958	No Change

R-46

RIGHT-OF-WAY AND TRACK MAP  
 THE CLEVELAND, CINCINNATI, CHICAGO & ST. LOUIS RY. CO.  
 THE CLEVELAND, CINCINNATI, CHICAGO & ST. LOUIS RY.  
 OPERATED BY  
 THE CLEVELAND, CINCINNATI, CHICAGO & ST. LOUIS RY. CO.  
 INDIANAPOLIS DIVISION—MAIN LINE  
 Sta. 6600+00 To Sta. 6705+00  
 Scale 1 in. = 200 Ft.  
 June 30th, 1915.  
 Office of Valuation Engineer, Cincinnati, O.

\* See No. 5, Sheet 22  
 \* See No. 16, Sheet 24  
 \* See No. 17, Sheet 24  
 \* See No. 18, Sheet 24  
 \* See No. 19, Sheet 24  
 \* See No. 20, Sheet 24  
 \* See No. 21, Sheet 24  
 \* See No. 22, Sheet 24  
 \* See No. 23, Sheet 24  
 \* See No. 24, Sheet 24  
 \* See No. 25, Sheet 24  
 \* See No. 26, Sheet 24  
 \* See No. 27, Sheet 24  
 \* See No. 28, Sheet 24  
 \* See No. 29, Sheet 24  
 \* See No. 30, Sheet 24  
 \* See No. 31, Sheet 24  
 \* See No. 32, Sheet 24  
 \* See No. 33, Sheet 24  
 \* See No. 34, Sheet 24  
 \* See No. 35, Sheet 24  
 \* See No. 36, Sheet 24  
 \* See No. 37, Sheet 24  
 \* See No. 38, Sheet 24  
 \* See No. 39, Sheet 24  
 \* See No. 40, Sheet 24  
 \* See No. 41, Sheet 24  
 \* See No. 42, Sheet 24  
 \* See No. 43, Sheet 24  
 \* See No. 44, Sheet 24  
 \* See No. 45, Sheet 24  
 \* See No. 46, Sheet 24  
 \* See No. 47, Sheet 24  
 \* See No. 48, Sheet 24  
 \* See No. 49, Sheet 24  
 \* See No. 50, Sheet 24  
 \* See No. 51, Sheet 24  
 \* See No. 52, Sheet 24  
 \* See No. 53, Sheet 24  
 \* See No. 54, Sheet 24  
 \* See No. 55, Sheet 24  
 \* See No. 56, Sheet 24  
 \* See No. 57, Sheet 24  
 \* See No. 58, Sheet 24  
 \* See No. 59, Sheet 24  
 \* See No. 60, Sheet 24  
 \* See No. 61, Sheet 24  
 \* See No. 62, Sheet 24  
 \* See No. 63, Sheet 24  
 \* See No. 64, Sheet 24  
 \* See No. 65, Sheet 24  
 \* See No. 66, Sheet 24  
 \* See No. 67, Sheet 24  
 \* See No. 68, Sheet 24  
 \* See No. 69, Sheet 24  
 \* See No. 70, Sheet 24  
 \* See No. 71, Sheet 24  
 \* See No. 72, Sheet 24  
 \* See No. 73, Sheet 24  
 \* See No. 74, Sheet 24  
 \* See No. 75, Sheet 24  
 \* See No. 76, Sheet 24  
 \* See No. 77, Sheet 24  
 \* See No. 78, Sheet 24  
 \* See No. 79, Sheet 24  
 \* See No. 80, Sheet 24  
 \* See No. 81, Sheet 24  
 \* See No. 82, Sheet 24  
 \* See No. 83, Sheet 24  
 \* See No. 84, Sheet 24  
 \* See No. 85, Sheet 24  
 \* See No. 86, Sheet 24  
 \* See No. 87, Sheet 24  
 \* See No. 88, Sheet 24  
 \* See No. 89, Sheet 24  
 \* See No. 90, Sheet 24  
 \* See No. 91, Sheet 24  
 \* See No. 92, Sheet 24  
 \* See No. 93, Sheet 24  
 \* See No. 94, Sheet 24  
 \* See No. 95, Sheet 24  
 \* See No. 96, Sheet 24  
 \* See No. 97, Sheet 24  
 \* See No. 98, Sheet 24  
 \* See No. 99, Sheet 24  
 \* See No. 100, Sheet 24











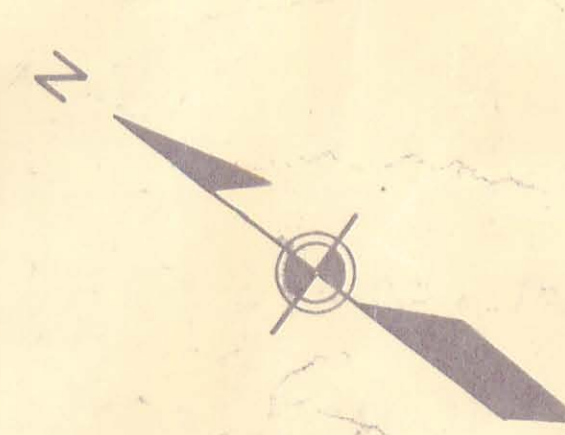
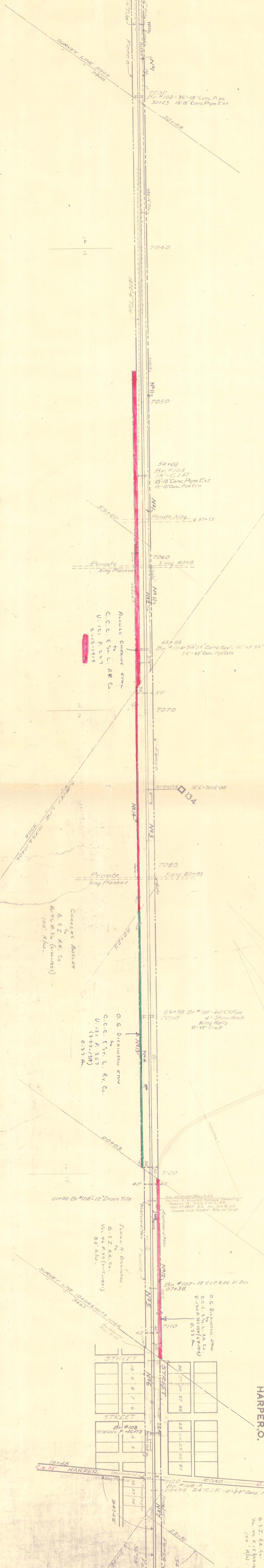




Match Mark for Sheet #26.

7022+40.

133-20 Br #101  
42" 18" Conc Pipe  
18" 18" Conc Pipe Ext



Station	Structure	Material	Notes
7040	Private King Planked	King Planked	
7060	Private King Planked	King Planked	
7070	Alberta Granite Stn	Granite	
7080	Private King Planked	King Planked	
7100	O.G. Dickinson Stn	Granite	
7110	Harper Road	Concrete	

See No. 26 - Sheet 26  
 .. 20 - 1 - 25  
 .. 20 - 1 - 25

Date	Description
1951	No Change
1952	" "
1953	" "
1954	" "
1955	" "
1956	" "
1957	2-5-60
1958	1/2-2-8-61

CONNECTED TO DECEMBER 1950  
 CONNECTED TO DECEMBER 1954  
 CONNECTED TO DECEMBER 1954

Sheet No. 27 of X-14  
 from Survey Station 7022+40  
 to Station 7120+00  
 Office of Valuation Engineers, Cincinnati, O.

**RIGHT-OF-WAY AND TRACK MAP**  
 THE CLEVELAND, CINCINNATI, CHICAGO & ST. LOUIS RR.  
 INDIANAPOLIS DIVISION - MAIN LINE  
 Opened by  
 THE CLEVELAND, CINCINNATI, CHICAGO & ST. LOUIS RR. CO.  
 Scale 1 in. = 200 ft.  
 June 30th, 1915

**HARPER O.**

**CROSSING**  
 NO. 134 841 IN

Match Mark for Sheet #28.

7120+00.

V-41  
 27