

Received 4-19-94 ok (CR)



Lee Surveying and Mapping Co.



Farm Surveys • Lot Surveys • Topography • Subdivisions • Construction Layout

143 EAST COLUMBUS AVENUE
BELLEFONTAINE, OHIO 43311

(513) 593-7335

JEFFREY I. LEE, P.S.

HENRY FARMS 12.596 ACRES

Lying in Virginia Military Survey 4859, Zane Township, Logan County, Ohio.

Being out of the Henry Farms, an Ohio Partnership, 129.15 acre tract as deeded and described in Official Record 216, Page 397, Tract II of the Logan County Records of Deeds and being more particularly described as follows:

Beginning at an axle on end found at the intersection of center-lines of Township Road 161 and Township Road 160.

THENCE, with the center-line of Township Road 160 the following two courses:

N 53°-50'-37" E, a distance of 666.67 feet to a stone with drill hole found.

N 31°-32'-00" W, a distance of 694.20 feet to a railroad spike set at the TRUE POINT OF BEGINNING.

THENCE, S 56°-10'-46" W, a distance of 1146.40 feet to a 5/8 inch iron rod set.

THENCE, N 33°-36'-31" W, a distance of 504.09 feet to a 5/8 inch iron rod set.

THENCE, N 57°-55'-43" E, a distance of 336.64 feet to a 5/8 inch iron rod set.

THENCE, N 31°-50'-41" W, a distance of 299.44 feet to a 5/8 inch iron rod set.

THENCE, N 57°-15'-01" E, a distance of 195.50 feet to a 5/8 inch iron rod set.

THENCE, S 32°-20'-21" E, a distance of 362.86 feet to a 5/8 inch iron rod set.

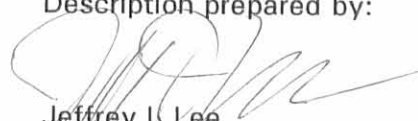
THENCE, N 67°-40'-41" E, a distance of 636.38 feet to a railroad spike set.

THENCE, with the center-line of Township Road 160, S 31°-32'-00" E, a distance of 300.06 feet to the point of beginning.

Containing 12.596 acres of which 0.209 acre is within the highway right-of-way.

The basis for bearings is based upon the center-line of Township Road 160 being S 31°-32'-00" E, and all other bearings are from angles and distances measured in a field survey by Lee Surveying and Mapping Company on April 4, 1994.

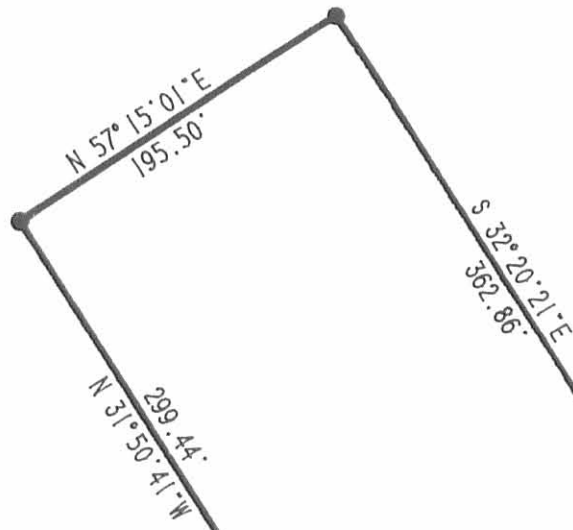
Description prepared by:


Jeffrey I. Lee
Professional Surveyor 6359
April 18, 1994

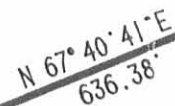


ORIGINAL STAMP IN GREEN

INDEXED ON MAP
8893 1D

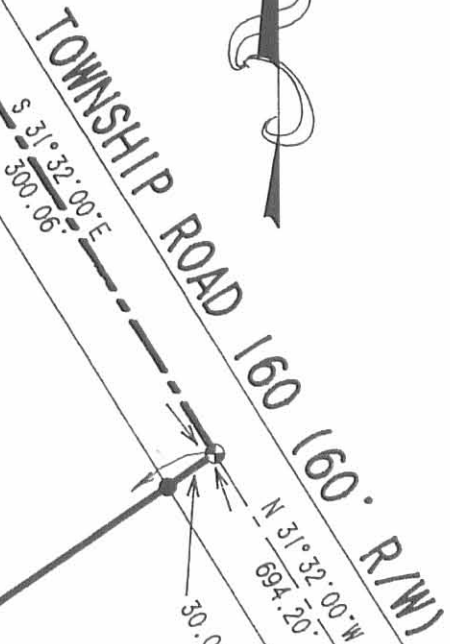


HENRY FARMS, AN OHIO PARTNERSHIP
129.15 ACRES
O.R. 216, PG. 397

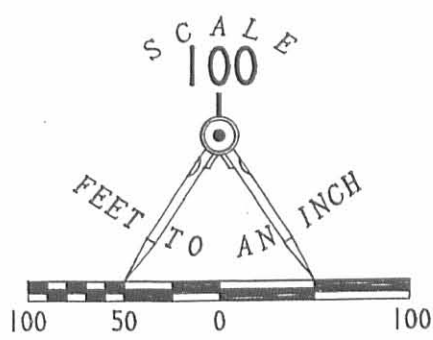


12.596 ACRES

OF WHICH 0.209 ACRE IS WITHIN
THE ROAD RIGHT-OF-WAY



CO. ENG. F.B. 513, PG. 42
STATION 33+97.5



LEGEND

- 5/8" IRON ROD SET
- ⊕ RAILROAD SPIKE SET
- ⊗ RAILROAD SPIKE FOUND
- ⊠ STONE W/DRILL HOLE FOUND
- ⊙ AXLE ON END FND.

REFERENCES

LOGAN COUNTY ENGINEERS F.B.
513, PG. 42

PREVIOUS SURVEY OF 10.853 AC.
FOR JOHN WESTFALL, DATED JAN
6, 1990. JOB NO. L-1778-4

**SURVEY OF 12.596 ACRES OUT OF THE
HENRY FARMS, AN OHIO PARTNERSHIP 129.15 ACRES
OFFICIAL RECORD 216, PAGE 397, TRACT II
VIRGINIA MILITARY SURVEY 4859
ZANE TOWNSHIP
LOGAN COUNTY, OHIO**

INDEXED ON MAP
8893 IP



ORIGINAL STAMP IN GREEN

SURVEYED BY:
[Signature]
JEFFREY I. LEE
PROFESSIONAL SURVEYOR 6359
APRIL 4, 1994

LEE SURVEYING & MAPPING CO.
143 East Columbus Avenue
BELLEFONTAINE, OHIO 43311
(513) 593-7335
D 237 PHILLIPS L- 2173-3

2 WORKING DAYS
BEFORE YOU DIG
CALL TOLL FREE **800-362-2764**
OHIO UTILITIES PROTECTION SERVICE.