

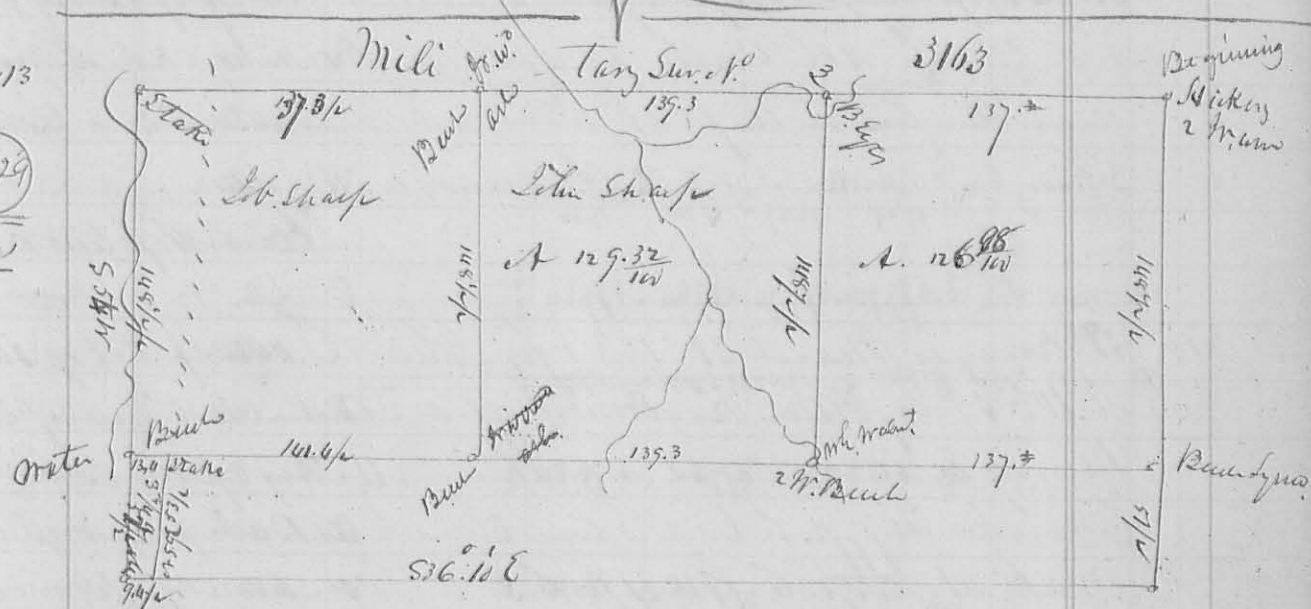
N^o 412

Surveyed April 10th 1838 an out lot adjoining 287 to Middlebury. Beginning N 22° W 35 Links from the North westerly Corner of Lot N^o 102; thence N 47° East 8.94 chains to a Stake; thence S 42° E 4.47 chains to a Stake; thence S 49° W 8.94 chains to a Stake; thence N 42° W 4.47 chains to the beginning. Containing 4 Aers.

Dan Hopkins C. Sur. S. C.

(8271)

N^o 413



(8429)

Erw

Surveyed April 11. 1838 for Heidy of Kentucky -
John Surman
John Sharp et al.
D Hopkins C. Sur.

414

Surveyed April 12. 1838 for Doct. Mt. Land part of S 34. T 4. R 14 1/2 W 2. Beginning at a Stake 20 feet South of the line of Buckingham here, thence S 17° E 6 chains to a Stake. Come to John Margui. And Peter Lister, thence with Lister line S 78° 10' W 6 ch 67 Links to a Stake; thence N 1° E 6 chains to a Stake 20 feet from said Buckingham; thence S 89° E 6 chains 67 Links to the beginning. Containing 4 Aers.

D Hopkins C. Sur.

N^o 415

Surveyed April 26th 1838 for Georg. Sulzemburg & others. Sects 7, 8, 17, 18 & 19 of part of 51. of T 7 S of R 7 & 8 E. the part of 51. Begin at the S. E. Corn. origin at bearing true an Elm 10 Links N 57° W 27 Links a Buck 6 Links S 38° E 30 Links thence N 3° 51' W 39.86 chains to a Sycamore 48 h. d. S 75° W 11 Links a Gray ash 24 Links S 85° E 31 Links - thence S 86° 10' W 35 ch 8 Links to a Gramp ash 15 Links Corn. tree - thence Corn. tree in the

(8436)