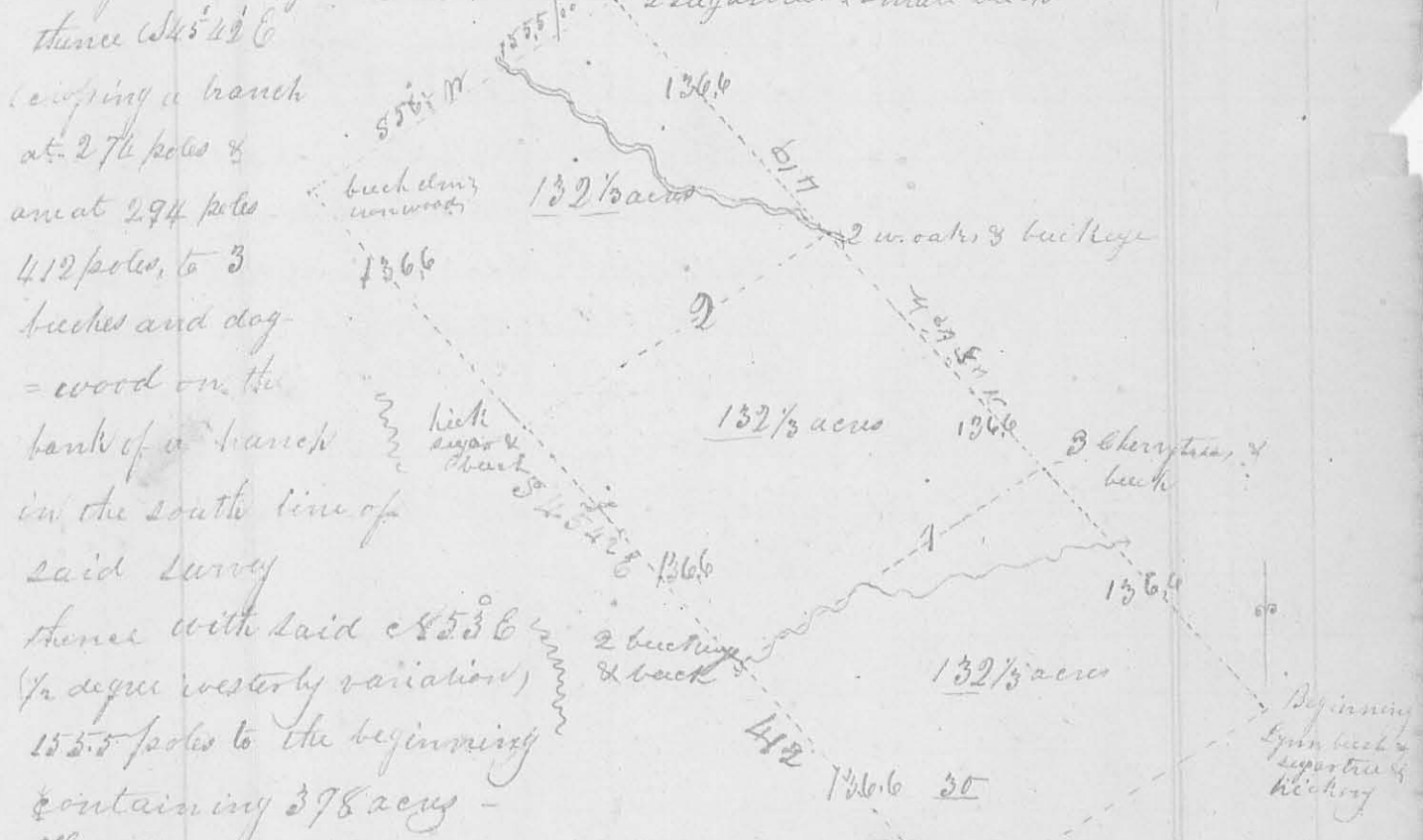


8179

# 11th mo. April, 20<sup>th</sup> 1824 Survey N<sup>o</sup> 30

Surveyed and divided 398 acres of land for John & John Sharp and William Asher, in the manner described below beginning at a buck, Lynn, an fresh marked hickory (the sugar tree is dead), the southeasterly corner to David Duncan's survey ex<sup>o</sup> 479 ex<sup>o</sup> S.W. corner to Richard Stephenson's survey ex<sup>o</sup> — on the waters of Darby's Creek thence ex<sup>o</sup> 45<sup>o</sup> 42' N, with the east line Duncan's said survey crossing a branch at 90 poles, one at 272 poles, 440 poles to 2 sugar trees and small buck W. C. corner to said survey and easterly corner to Robert Plover's survey ex<sup>o</sup> 3680 thence S 5 1/2 W 1/2 westerly variation from the original line thence the present bearings is S 5 1/2 W crossing a branch at 88 poles, 155.5 poles to a buck small elm and iron wood in the north line of the original survey



thence S 45<sup>o</sup> 42' E  
crossing a branch  
at 272 poles &  
one at 294 poles  
442 poles, to 3  
bucks and dog  
wood on the  
bank of a branch  
in the south line of  
said survey  
thence with said S 5 1/2 W  
(1/2 degree westerly variation)  
155.5 poles to the beginning  
& containing 398 acres -

Then first division line begins at  
3 cherry trees and buck in the east line  
of this survey 136.6 poles from the beginning;  
thence S 5 1/2 W. 155.5 poles to 2 buckeyes and buck on the bank  
of a branch - The second begins in at 2 white oaks and buckeye  
in the east line of this survey 136.6 from the beginning of the  
first division line; thence S 5 1/2 W 155.5 poles to a buckeye buck sugar tree  
in the west line of this survey dividing it into 3 lots of 132 1/3 acres each  
John Sharp  
Oliver Sawgill } 66  
J. McCarmon Surveyor