

BLVD 4-29-99 smy olv



Lee Surveying and Mapping Co., Inc.



Land Surveys • Topography • Subdivisions • Construction Layout

117 N. Madriver Street
Bellefontaine OH 43311

Phone: (937) 593-7335
Fax: (937) 593-7444

BOARD OF COUNTY COMMISSIONERS 30' SANITARY EASEMENT

Lying in Virginia Military Survey 4606, Zane Township, Logan County, Ohio.

Being a 30 wide sanitary sewer easement through the Board of County Commissioners of Logan County, 8.000 acre tract as deeded and described in Official Record 374, Page 660 of the Logan County Records of Deeds and being more particularly described as follows:

Beginning at a railroad spike found at the intersection of the center-lines of Union County Highway 168 and Union County Highway 167.

THENCE, with the center-line of County Highway 168 (60 feet wide) and the southerly line of Virginia Military Survey 4606, S 59°-26'-00" W, a distance of 1251.11 feet to a railroad spike found.

THENCE, with the east line of the Rodney D. Sealey 1.00 acre tract (Logan County O.R. 96, Pg. 401, Union County Vol. 314, Pg. 723), and the west line of the Fed Two Inc., 18.975 acre tract (O.R. 399, Pg. 20), N 30°-59'-50" W, a distance of 206.00 feet to a 5/8 inch iron rod found, passing a 5/8 inch iron rod found at 30.00 feet.

THENCE, with the north lines of the said 1.00 acre tract and the Michael S. Endsley 1.50 acre tract, (Logan County O.R. 57, Pg. 569), and the south line of the said 18.975 acre tract S 60°-16'-57" W, a distance of 418.90 feet to a 5/8 inch iron rod found, passing over the Union/Logan County Line.

THENCE, N 30°-51'-32" W, a distance of 1178.63 feet to a point.

THENCE, N 75°-51'-11" W, a distance of 402.51 feet to a point.

THENCE, N 35°-02'-21" W, a distance of 1045.37 feet to a point.

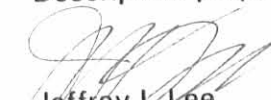
THENCE, N 79°-41'-50" W, a distance of 156.49 feet to a point.

THENCE, S 55°-38'-42" W, a distance of 484.06 feet to a point at the TRUE POINT OF BEGINNING on the easterly line of the aforesaid 8.000 acre tract.

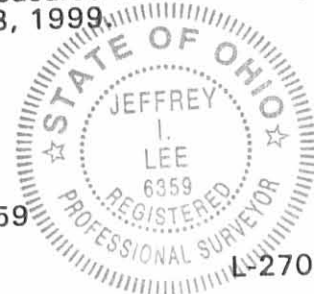
THENCE, with the center-line of the 30 feet wide sanitary sewer easement, S 55°-38'-42" W, a distance of 522.64 feet to a point at the terminus of this easement on the center of an existing manhole.

The basis for bearings is the center-line of Union County Highway 168, being S 59°-26'-00" W, and all other bearings are from angles and distances measured in field surveys by Lee Surveying and Mapping Co., Inc. on January 25, 1999, and April 23, 1999.

Description prepared by:


Jeffrey I. Lee
Professional Surveyor 6359
April 27, 1999

INDEXED ON MAP
5072 1D1



ORIGINAL STAMP IN GREEN

REC'D 4-29-99 SMY OK ✓



Lee Surveying and Mapping Co., Inc.



Land Surveys • Topography • Subdivisions • Construction Layout

117 N. Madriver Street
Bellefontaine OH 43311

Phone: (937) 593-7335
Fax: (937) 593-7444

DARBY CREEK CENTER, LTD. 30' SANITARY EASEMENT

Lying in Virginia Military Survey 4606, Zane Township, Logan County, Ohio.

Being a 30 wide Sanitary Sewer Easement through the Darby Creek Center, Ltd, original 189.972 acre tract as deeded and described in Volume 357, Page 447 of the Logan County Records of Deeds and being more particularly described as follows:

Beginning at a railroad spike found at the intersection of the center-lines of Union County Highway 168 and Union County Highway 167.

THENCE, with the center-line of County Highway 168 (60 feet wide) and the southerly line of Virginia Military Survey 4606, S 59°-26'-00" W, a distance of 1251.11 feet to a railroad spike found.

THENCE, with the east line of the Rodney D. Sealey 1.00 acre tract (Logan County O.R. 96, Pg. 401, Union County Vol. 314, Pg. 723), and the west line of the Fed Two Inc., 18.975 acre tract (O.R. 399, Pg. 20), N 30°-59'-50" W, a distance of 206.00 feet to a 5/8 inch iron rod found, passing a 5/8 inch iron rod found at 30.00 feet.

THENCE, with the north lines of the said 1.00 acre tract and the Michael S. Endsley 1.50 acre tract, (Logan County O.R. 57, Pg. 569), and the south line of the said 18.975 acre tract S 60°-16'-57" W, a distance of 418.90 feet to a 5/8 inch iron rod found, passing over the Union/Logan County Line.

THENCE, with the west line of the said 18.975 acre tract, N 30°-51'-32" W, a distance of 1178.63 feet to a point, at the TRUE POINT OF BEGINNING.

THENCE, with the center-line of the 30 feet wide sanitary sewer easement, N 75°-51'-11" W, a distance of 402.51 feet to a point.

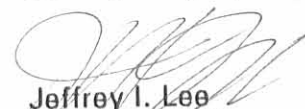
THENCE, N 35°-02'-21" W, a distance of 1045.37 feet to a point.

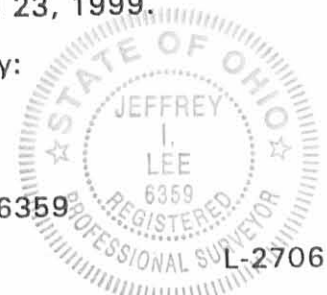
THENCE, N 79°-41'-50" W, a distance of 156.49 feet to a point.

THENCE, S 55°-38'-42" W, a distance of 484.06 feet to a point at the terminus of this easement on east line of the Board of County Commissioners of Logan County 8.000 acre tract (O.R. 374, Pg. 660).

The basis for bearings is the center-line of Union County Highway 168, being S 59°-26'-00" W, and all other bearings are from angles and distances measured in field surveys by Lee Surveying and Mapping Co., Inc. on January 25, 1999, and April 23, 1999.

Description prepared by:


Jeffrey I. Lee
Professional Surveyor 6359
April 27, 1999



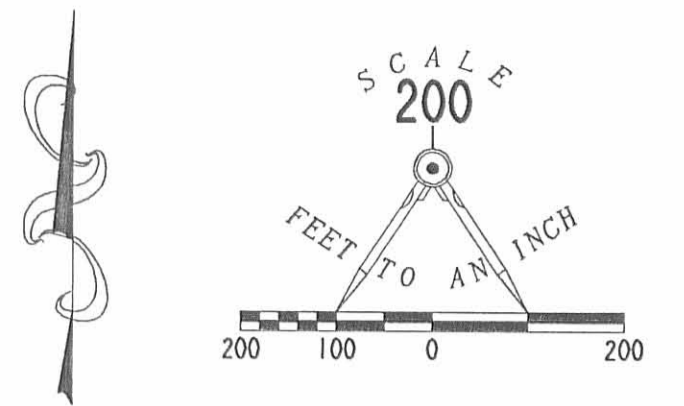
INDEXED COPY
5072 1D-2

ORIGINAL STAMP IN GREEN

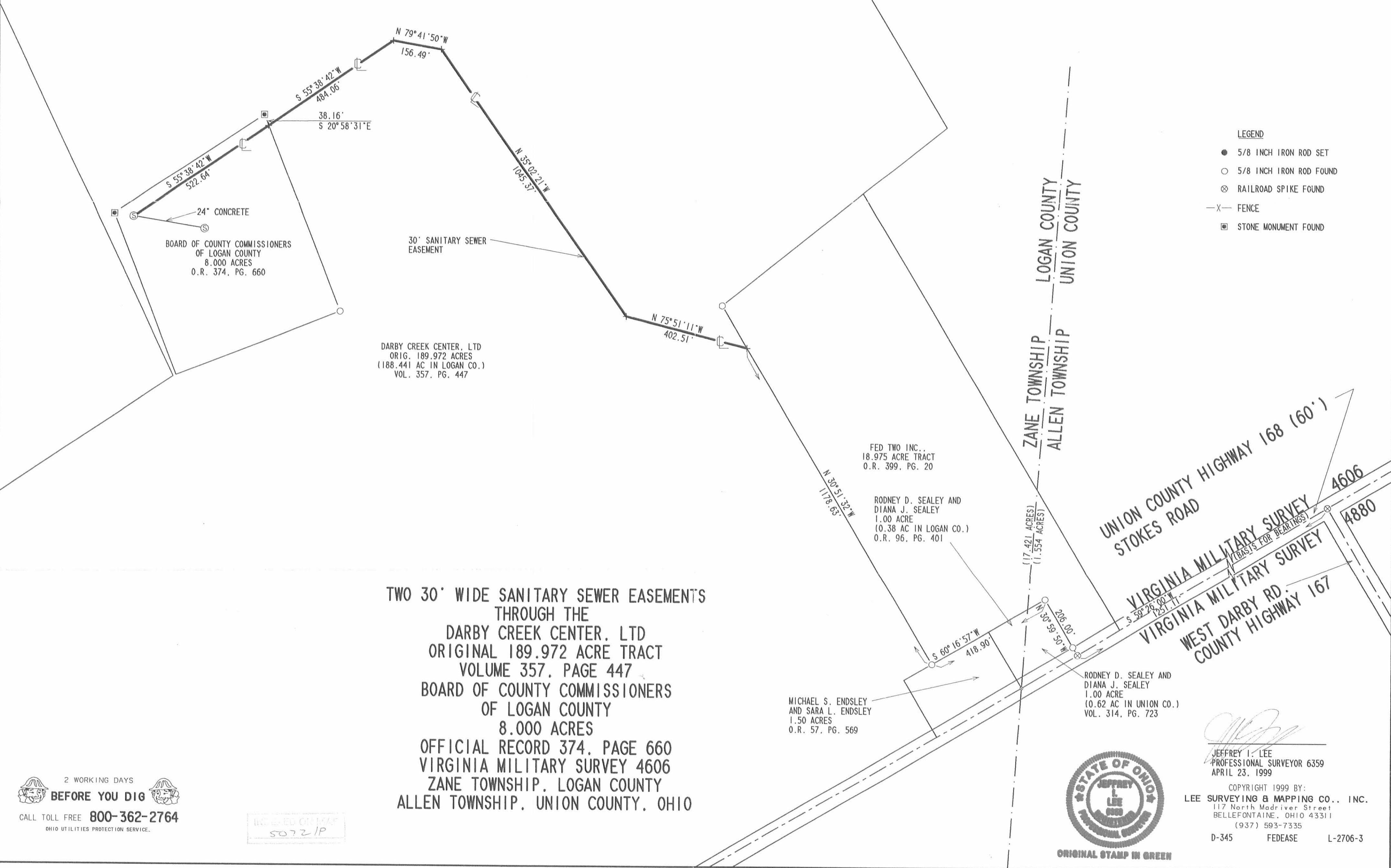
REC'D 4-29-99 SWM BU ✓

REFERENCES

LOGAN COUNTY ENGINEERS FILES:
R-747, R-5072, R-5213 AND R-7963
O.K.S. BK. 14, PAGE 26
FIELD BOOK 390A, PAGES 131 & 135



- LEGEND
- 5/8 INCH IRON ROD SET
 - 5/8 INCH IRON ROD FOUND
 - ⊗ RAILROAD SPIKE FOUND
 - X- FENCE
 - STONE MONUMENT FOUND



TWO 30' WIDE SANITARY SEWER EASEMENTS
THROUGH THE
DARBY CREEK CENTER, LTD
ORIGINAL 189.972 ACRE TRACT
VOLUME 357, PAGE 447
BOARD OF COUNTY COMMISSIONERS
OF LOGAN COUNTY
8.000 ACRES
OFFICIAL RECORD 374, PAGE 660
VIRGINIA MILITARY SURVEY 4606
ZANE TOWNSHIP, LOGAN COUNTY
ALLEN TOWNSHIP, UNION COUNTY, OHIO

2 WORKING DAYS
BEFORE YOU DIG
CALL TOLL FREE 800-362-2764
OHIO UTILITIES PROTECTION SERVICE.

RECORDED ON 11/17/97
50721P



JEFFREY I. LEE
PROFESSIONAL SURVEYOR 6359
APRIL 23, 1999

COPYRIGHT 1999 BY:
LEE SURVEYING & MAPPING CO., INC.
117 North Madriver Street
BELLEFONTAINE, OHIO 43311
(937) 593-7335

D-345 FEDEASE L-2706-3

REC'D 1-28-99 SMY OK ✓



Lee Surveying and Mapping Co., Inc.



Land Surveys • Topography • Subdivisions • Construction Layout

117 N. Madriver Street
Bellefontaine OH 43311

Phone: (937) 593-7335
Fax: (937) 593-7444

DARBY CREEK CENTER, LTD. 18.975 ACRES

Lying in Virginia Military Survey 4606, Zane Township, Logan County and Allen Township, Union County, Ohio.

Being out of the Darby Creek Center, Ltd, original 189.972 acre tract as deeded and described in Volume 357, Page 447 of the Logan County Records of Deeds and Volume 316, Page 355 of the Union County Records of Deeds and being more particularly described as follows:

Beginning at a railroad spike found at the intersection of the center-lines of Union County Highway 168 and Union County Highway 167.

THENCE, with the center-line of County Highway 168 (60 feet wide) and the southerly line of Virginia Military Survey 4606, S 59°-26'-00" W, a distance of 1094.42 feet to a railroad spike found at the TRUE POINT OF BEGINNING.

THENCE, with the center-line of County Highway 168 and the southerly line of Virginia Military Survey 4606, S 59°-26'-00" W, a distance of 156.69 feet to a railroad spike found.

THENCE, with the east line of the Rodney D. Sealey 1.00 acre tract, (Logan County O.R. 96, Pg. 401, Union County Vol. 314, Pg. 723), N 30°-59'-50" W, a distance of 206.00 feet to a 5/8 inch iron rod set, passing a 5/8 inch iron rod set at 30.00 feet.

THENCE, with the north lines of the said 1.00 acre tract and the Michael S. Endsley 1.50 acre tract, (Logan County O.R. 57, Pg. 569), S 60°-16'-57" W, a distance of 418.90 feet to a 5/8 inch iron rod set, passing over the Union/Logan County Line.

THENCE, N 30°-51'-32" W, a distance of 1334.64 feet to a 5/8 inch iron rod set.

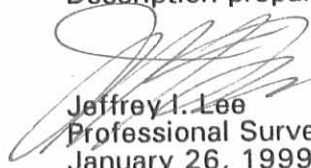
THENCE, N 51°-28'-28" E, a distance of 581.20 feet to a 3/4 inch iron rod found at the northwest corner of the Simon D. Traikovich original 65.99 acre tract, (Logan County O.R. 27, Pg. 236, Union County Vol. 299, Pg. 748).

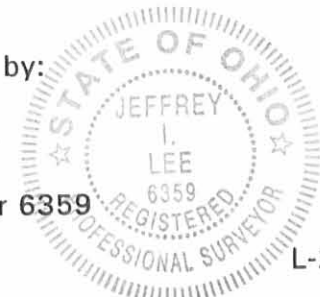
THENCE, with the west line of the said original 65.99 acre tract, S 30°-51'-32" E, a distance of 1627.32 feet to the point of beginning, passing a 5/8 inch iron rod set at 1597.32 feet, passing over the Logan/Union County Line.

Containing 18.975 acres, of which 17.421 acres are in Logan County and 1.554 acres are in Union County with 0.108 acre within the highway right-of-way.

The basis for bearings is the center-line of County Highway 168, being S 59°-26'-00" W, and all other bearings are from angles and distances measured in a field survey by Lee Surveying and Mapping Co., Inc. on January 25, 1999.

Description prepared by:

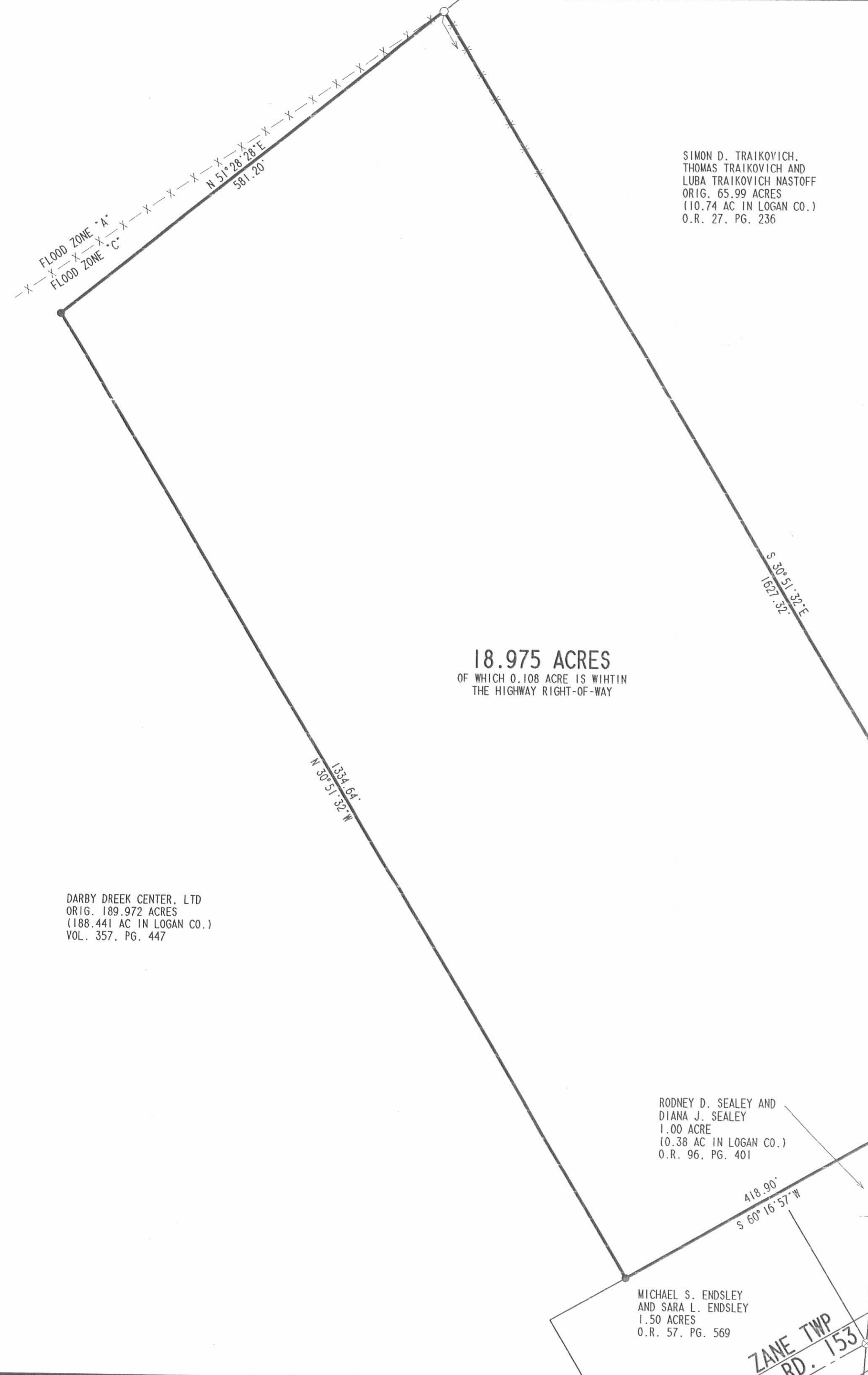

Jeffrey I. Lee
Professional Surveyor 6359
January 26, 1999



L-2706

INCORPORATED ON MAP
5072 2b

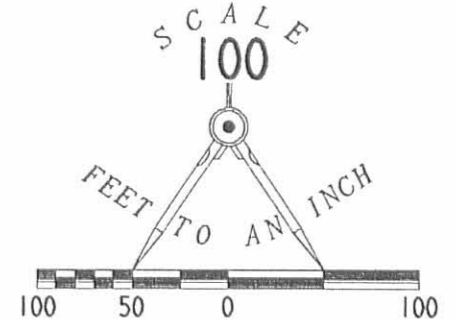
ORIGINAL STAMP IN GREEN



SIMON D. TRAIKOVICH,
 THOMAS TRAIKOVICH AND
 LUBA TRAIKOVICH NASTOFF
 ORIG. 65.99 ACRES
 (10.74 AC IN LOGAN CO.)
 O.R. 27, PG. 236

REFERENCES

LOGAN COUNTY ENGINEERS FILES:
 R-747, R-5072, R-5213 AND R-7963
 O.K.S. BK. 14, PAGE 26
 FIELD BOOK 390A, PAGES 131 & 135



LEGEND

- 5/8 INCH IRON ROD SET
- 3/4 INCH IRON ROD FOUND
- ⊗ RAILROAD SPIKE FOUND
- X- FENCE

NOTE:

BY GRAPHIC PLOTTING ONLY. THE AREA SHOWN IN LOGAN COUNTY IS IN FLOOD ZONE "C". AREA OF MINIMAL FLOODING PER THE FLOOD INSURANCE RATE MAP PANEL NUMBER 390772 0225 C DATED MAY 15, 1985

THE AREA SHOWN IN UNION COUNTY IS IN FLOOD ZONE "X". AREA DETERMINED TO BE OUTSIDE 500 YEAR FLOOD PLAIN PER THE FLOOD INSURANCE RATE MAP PANEL NUMBER 390808 0075 B, DATED SEPT. 27, 1991

NO FIELD SURVEYING WAS PERFORMED TO DETERMINE THESE ZONES AND AN ELEVATION CERTIFICATE MAY BE NEEDED TO VERIFY THIS DETERMINATION OR TO APPLY FOR A VARIANCE FROM THE FEDERAL EMERGENCY MANAGEMENT AGENCY.

18.975 ACRES
 OF WHICH 0.108 ACRE IS WITHIN
 THE HIGHWAY RIGHT-OF-WAY

FLOOD ZONE "C", FEMA PANEL #390772 0225 C
 ZANE TOWNSHIP LOGAN COUNTY
 ALLEN TOWNSHIP UNION COUNTY
 FLOOD ZONE "X", FEMA PANEL #390808 0075 B

SIMON D. TRAIKOVICH,
 THOMAS TRAIKOVICH AND
 LUBA TRAIKOVICH NASTOFF
 ORIG. 65.99 ACRES
 (55.25 AC IN UNION CO.)
 VOL. 299, PG. 748

SURVEY OF 18.975 ACRES OUT OF
 THE DARBY CREEK CENTER, LTD
 ORIGINAL 189.972 ACRE TRACT
 LOGAN COUNTY VOLUME 357, PAGE 447
 UNION COUNTY VOLUME 316, PAGE 355
 VIRGINIA MILITARY SURVEY 4606
 ZANE TOWNSHIP, LOGAN COUNTY
 ALLEN TOWNSHIP, UNION COUNTY, OHIO

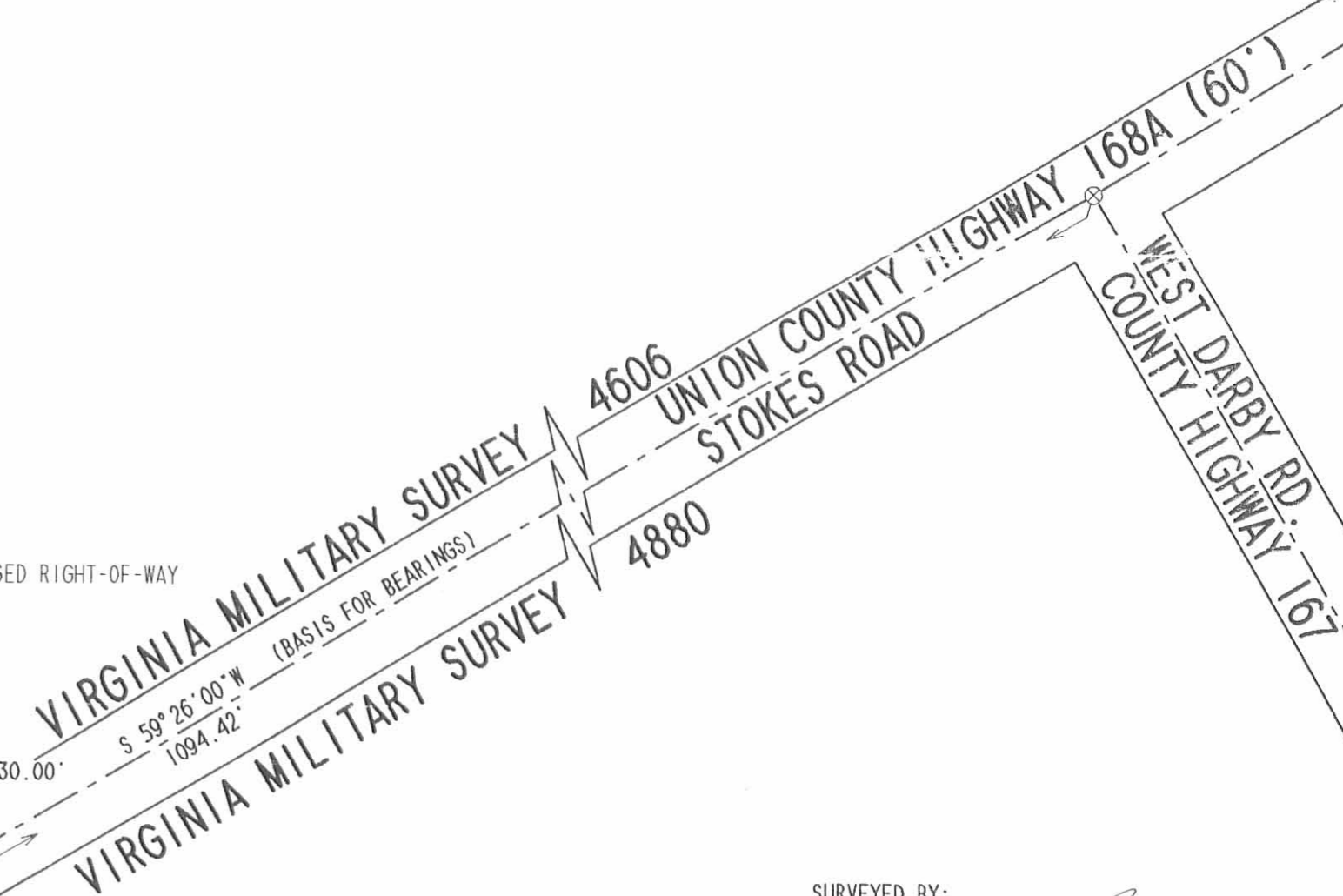
DARBY CREEK CENTER, LTD
 ORIG. 189.972 ACRES
 (188.441 AC IN LOGAN CO.)
 VOL. 357, PG. 447

RODNEY D. SEALEY AND
 DIANA J. SEALEY
 1.00 ACRE
 (0.38 AC IN LOGAN CO.)
 O.R. 96, PG. 401

MICHAEL S. ENDSLEY
 AND SARA L. ENDSLEY
 1.50 ACRES
 O.R. 57, PG. 569

DARBY CREEK CENTER, LTD
 ORIG. 189.972 ACRES
 (1.531 AC IN UNION CO.)
 VOL. 316, PG. 355

RODNEY D. SEALEY AND
 DIANA J. SEALEY
 1.00 ACRE
 (0.62 AC IN UNION CO.)
 VOL. 314, PG. 723



SURVEYED BY:
 JEFFREY I. LEE
 PROFESSIONAL SURVEYOR 6359
 JANUARY 22, 1999

COPYRIGHT 1999 BY:
 LEE SURVEYING & MAPPING CO., INC.
 117 North Madriver Street
 BELLEFONTAINE, OHIO 43311
 (937) 593-7335

5072 2P

Hagar to Coons Survey Description
December, 1971

Being situated a part in Allen Township, Union County, and the remainder in Zane Township, Logan County, Ohio; and being a part of V.M.S. #4606.

Beginning at a iron in the line between Union County and Logan County, and in a County Road that is numbered 168 in Union County and 153 in Logan County. Said beginning point is also the southeast corner of a 1.50 acre tract in Logan County.

Thence with the east side of said 1.50 acre tract N 29° - 14'W 208.7 feet to a iron.

Thence N 62° - 00'E 209.0 feet to a iron.

Thence S 29° - 14'E 206.0 feet to a iron in the center of Union County Road 168.

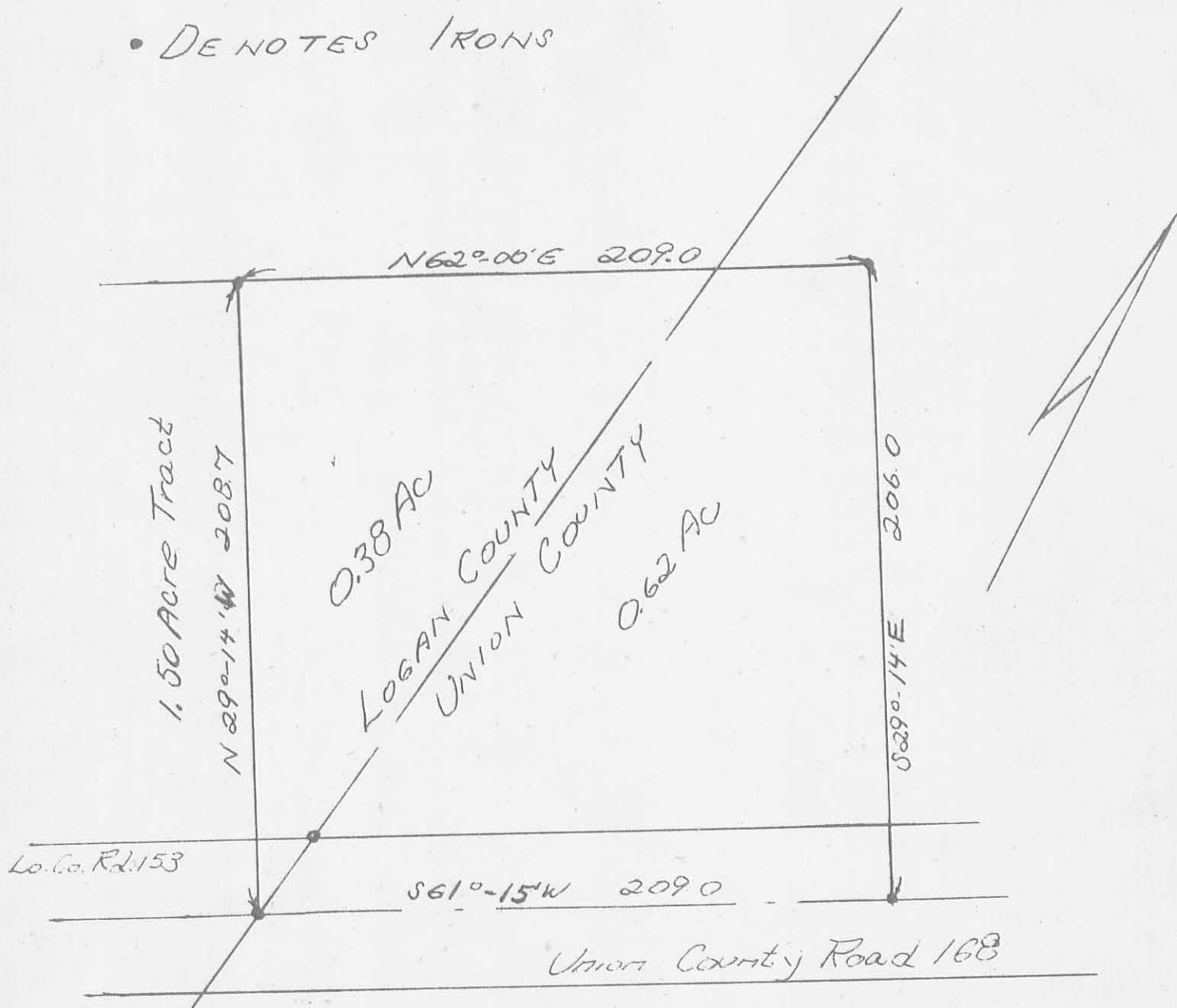
Thence with the center of Union County Road 168 S 61° - 15'W 209.0 feet to the place of beginning.

Containing 1.00 acre more or less of which 0.62 of an acre is from a 1.90 acre tract in Union County, and 0.38 of an acre is from a 12.10 acre tract in Logan County.

Owen K. Shirk
Surveyor 4271

HAGAR to COONS SURVEY
ALLEN TWP., UNION COUNTY
ZANE TWP., LOGAN COUNTY
V.M.S. 4606 - OHIO - 1" = 50'

• DENOTES IRONS



Owen K. Stirk
Surveyor 4271
Surveyed: