

Norveil Surrey

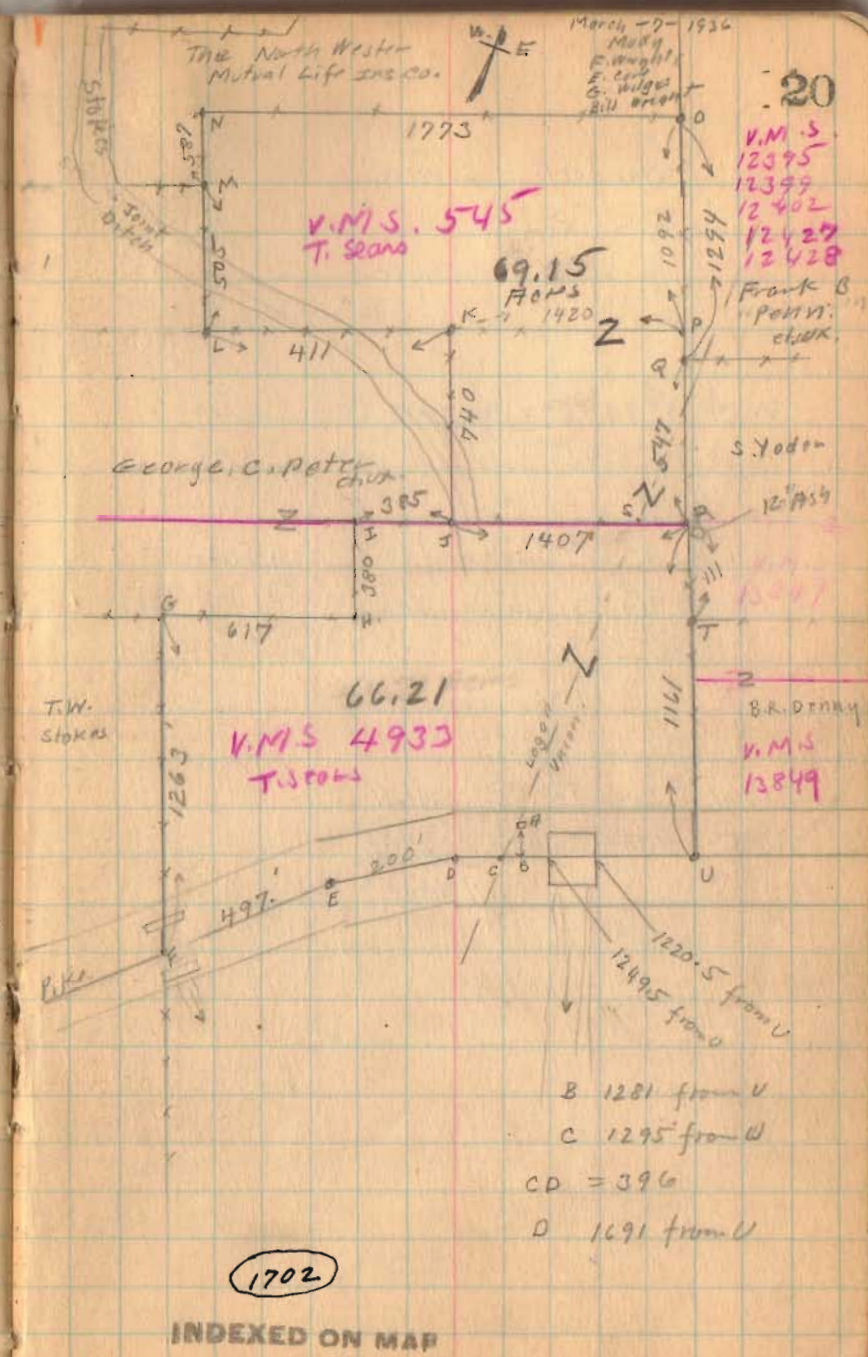
Zone Township Logan County

Allen Township Union County

V.M.S. 545 V.M.S. 4933

- A County Line stone Book D Page 42
- B.  $\Phi$  Road (Denny - Norveil Pike)
- C " " " " "
- D " " " " "
- E " " " " "
- F " " " " "
- G Post
- H " "
- I " "
- J Temporary Point West Edge Ditch
- K. Iron Pipe
- L post
- M " "
- N " "
- O " "
- P Temporary Point
- Q Post
- R Post
- S Point on crats Line RS = 346 by Book D Page 42
- T. post
- U  $\Phi$  Road.

Denny & Norveil Road 137



March - 7 - 1936  
M. W. Wright  
E. C. Wright  
G. W. Wright  
Bill Wright

V.M.S. 12395  
12399  
12402  
12429  
12428

Frank B. Peter chuk

S. Yoder

12759

13047

B.R. Denny

V.M.S. 13849

1702

INDEXED ON MAP

Normal Survey

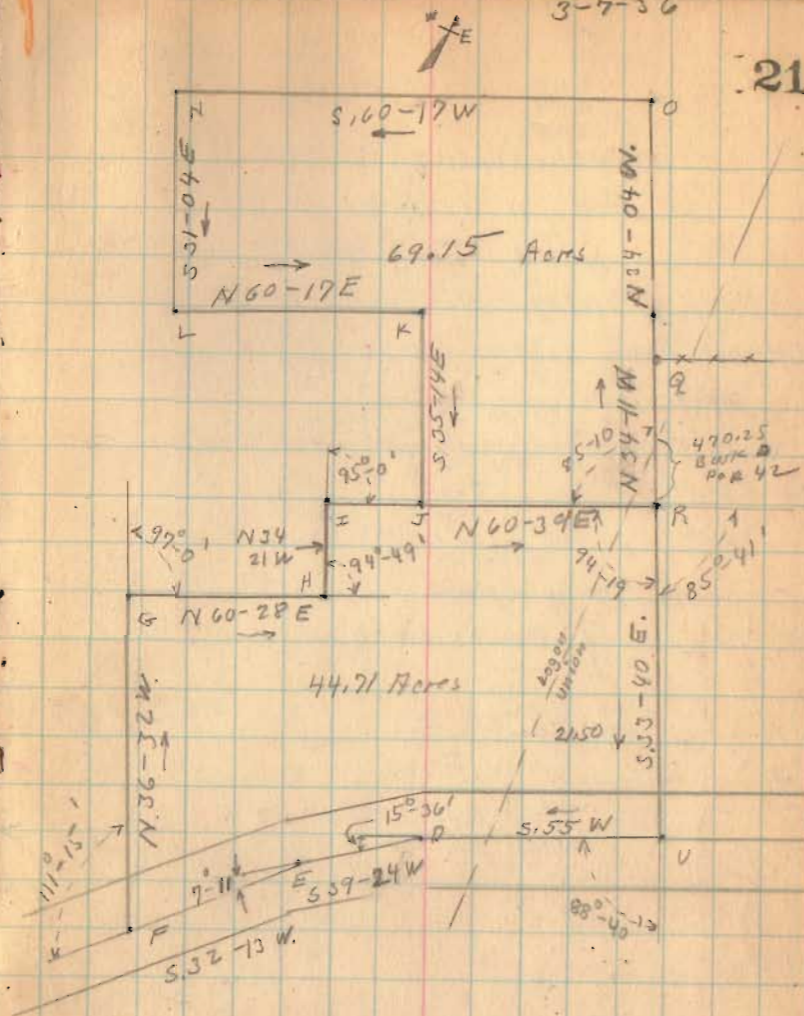
V. M. S. 545 Logan Co. 66.40  
 V. M. S. 545 Union Co. 21.75 88.15

V. M. S. 4933 Logan Co. 44.21  
 V. M. S. 4933 Union Co. 21.50 66.21  
 135.36

Total Logan Co. 111.11  
 Total Union Co. 24.25  
135.36

3-7-36

21



1936

*Zane - Allen*  
44.71  
21.50  
66.42  
2.75

*Norviel*

~~Stokes~~ Survey

Logan and Union County.

The following described land in V. M. S. 545 and V. M. S. 4933 and being in Zane Township Logan County, Ohio and Allen Township Union County, Ohio

Tract one being in V. M. S. 4933, Beginning at Northeast corner of Sears Original Survey 4933 thence with the East Line of survey 4933 South 33°-40' East 1161 feet to the center of Denny and Norviel Pike known as Logan County road No. 137, the last described line passing B. R. Dennys Northwest corner at 111 feet; thence with center of said Pike South 55 West 1691 feet, the last described line passing from Union to Logan County at 1295 feet; thence with the center of said Pike South 39° 24' West 200 feet, South 32°-13' West <sup>497 Feet to a point in center of Pike</sup> in T. W. Stokes East line; thence with the said Stokes East line North 36°-32' West 1263 feet to a post in G. C. Peters South line; thence with said Peters South line North 60° 28' East 617 Feet to a post at one of Peters Southeast corners; thence with one of Peters East lines North 34°-21' West 380 feet to a post in Peters South line; and also in North line of V. M. S. 4933; thence with North line of survey 4933 North 60°-39' East 1792 feet to place of beginning, the last last described line passing Peters Southeast corner at 385 feet and from Logan to Union County at 1445½ feet.

Said tract No. 1 Containing 44.71 acres in Zane Township Logan County and 21.50 acres in Allen Township Union County.

Tract No. 2 being in V. M. S. 545. Beginning at Southeast corner of V. M. S. 545 (also beign North east corner of V. M. S. 4933) thence with the East line of Survey 545 North 34°-11' West 547 feet, North 34°-04' West 1294 feet to one of the Southeast Corners of The Northwestern Mutual Life Insurance Co. Land; thence with the South line of said Ins. Co. land South 60°-17' West 1773 feet ~~to a~~ <sup>To a</sup> post; thence with East line of said Ins. Co. land and also one of the East lines of Perers land South 31°-04' East 1092 feet passing North east corner of Peters land at 587 feet; thence with one of Peters North lines North 60°-17' East 411 feet

INDEXED ON MAP

1702

10-1

## Stakes Survey (Continued)

to an iron pipe; thence with one of Peters East lines South ~~85°~~<sup>35°</sup>-14' East 740 feet to a ~~post~~<sup>Point</sup> in South line of V. M. S. 545; thence with said Survey line North 60°-39' East 1407 feet to place of beginning, the last described line passing from Logan County to Union County at ~~1444~~<sup>1060.5</sup> feet,

Said tract No. 2 containing 66.40 acres in Zane Township<sup>Logan Co.</sup> and 2.75 acres in Allen Township Union County.

Total in the 2 Tracts as follows:

V. M. S.	545	Zane Township Logan County	66.40	Aeres.
V. M. S.	4933	Zane Township Logan Co.	44.71	"
V. M. S.	545	Allen Township Union Co.	2.75	"
V. M. S.	4933	" " " "	21.50	"
			<u>135.36</u>	"

and being the same tract as surveyed March, 1936 as shown in Logan County Surveyors Book 597 Pages 20 and 21.

INDEXED ON MAP

1702 17-2