

This road is now S.R. 559
EC.P. 10-7-81

Road 159
 Zare Township

40' Road Record No. 1 Page 425-427

40' " " " 3 " 78-79-83

Stakes 30' from E

1700	L-R.
4700	L-
10700	L-R
14700	L-R.
18700	L-R.
22700	L-R.
28710	L-R.
39700	L-R.
50700	L-R
53700	L-

Staked 60' - Commissioners to
 View road June-20-1936 and
 have a hearing June 27, 1936 in
 order to get to make width
 from 40' to 60'

1347

INDEXED ON MAP

39

SUNC 4-1936
 Clear-Windy
 F. Wind
 E. Cur.
 G. vulgus V.M.S. 9657

18769 x Z x

2000
12700

18.2
17200

18.5
10700

1720
4700

18.0
1730
1700

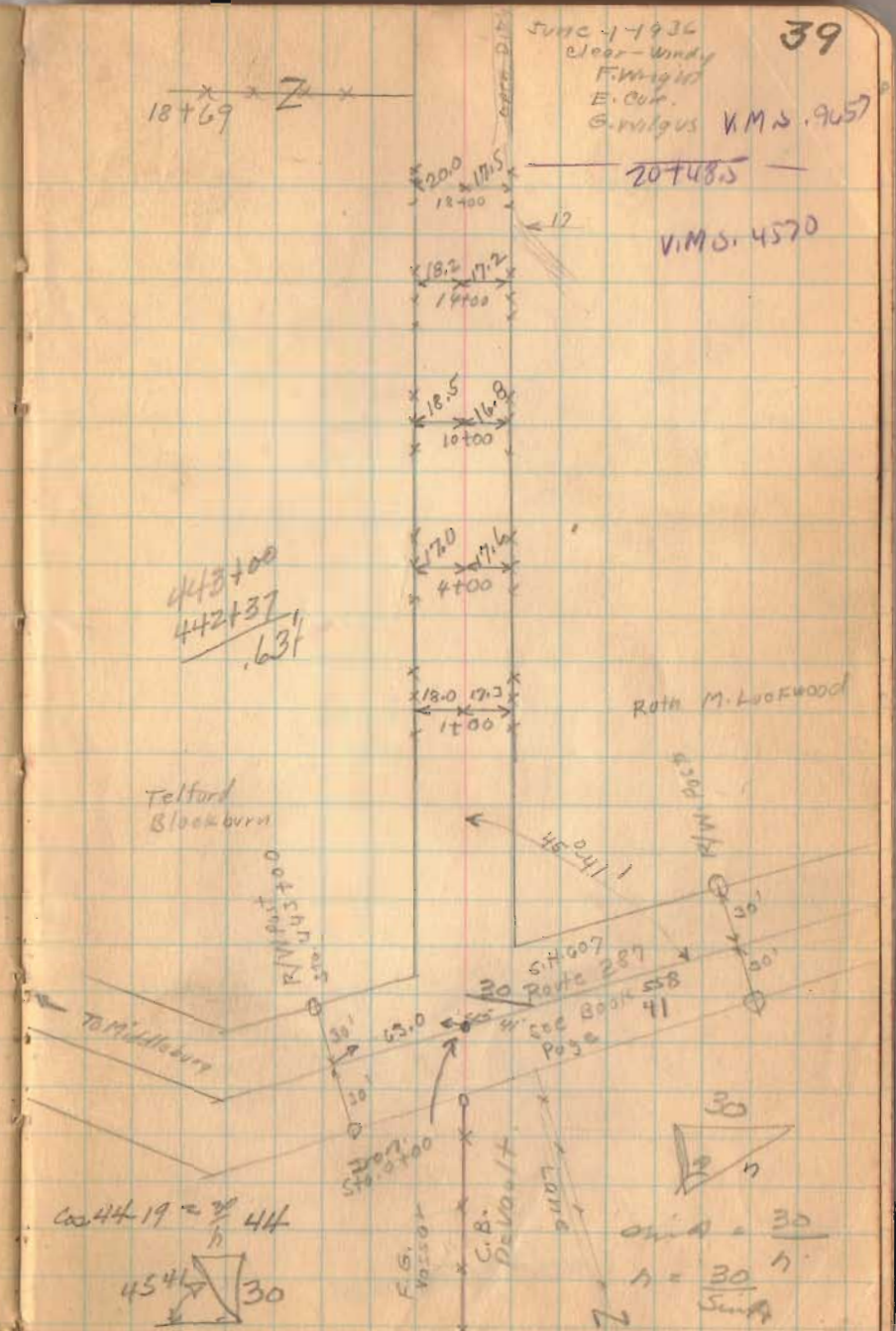
20748.5

V.M.S. 4570

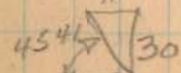
443700
 442737
 637

Roth M. Looewood

Telford
 Blackburn



Co. 44-19 = $\frac{2}{3}$ 44



Sum A = 30

Sum A = 30

Sum A

Flood, 159

6-7-36

40



26+63
15" corr
Pipe.

Bessie Collins

26+40

Ruth Lookwood

24+00 Private wood
Bridg Poor condition.

ANGLE

Sta. 23+06.5
0°-07'14"±

Placed 2x2x24' HUB

N.W. IAS. CO.

N. 51° E

23+x

Telford

Blackburn

Wood
Pole

31.8 (New)

31.25 (New)

10' elm (20')

Stump (Cotton wood)

67 (New)

N. 12° W

22+33

21.2 20.8

22+00

1347

INDEXED ON MAP

Road 159

$$\begin{array}{r}
 36 \\
 34 \\
 \hline
 5 \\
 74 \\
 \hline
 30 \\
 5
 \end{array}$$

1347

INDEXED ON MAP

G-1-36

Ella Damm
 46+65
 Bessie Collins

10' Hail Bu

x

18.1

O.H. Rausche 41
 Bessie Collins
 Sta. 46+98
 Paved 2x2x24" Hrs.
 No. Angle

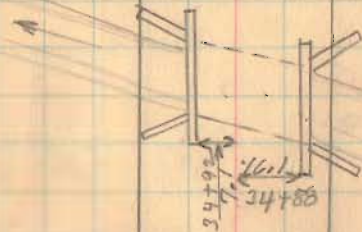
Bessie Collins
 x 39+81 x
 N.W. Life Ins Co.

V.M.S. 4953

x 18.5 22.0 x
 x 39+00 x

35+50
 20' Men

V.M.S. 7117



CONCRETE Slab
 Bridge No.
 159-3.40

34+17
 Lane

V.M.S. 7117

29+89

V.M.S. 9657

Road 159

49 x 23
46 x 11
260

53 x 27
50 x 16
16

1347

INDEXED ON MAP

6-1-36

42

8" Sugar O ← $\frac{17.7}{57+07}$ →
8" Catalpa O ← $\frac{18.8}{50+23}$ →
6" Loco O ← $\frac{19.5}{50+67}$ →

DIME

11" Catalpa O ← $\frac{28.4}{50+58}$ →
8" Catalpa O ← $\frac{20.7}{50+49}$ →
10" Catalpa O ← $\frac{20.9}{50+40}$ →
1 stored Frame [] ← $\frac{48.6}{50+20}$ →

10" Codon O ← $\frac{20.75}{50+16}$ →
8" Sugar O ← $\frac{18.3}{49+96}$ →



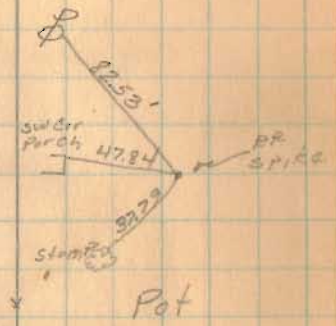
6" Catalpa O ← $\frac{18.7}{49+70}$ →
6" Catalpa O ← $\frac{19.1}{49+55}$ →

End of Hedge ← $\frac{18.0}{49+25}$ →

8" PPO O ← $\frac{24.0}{48+91}$ →

8" PPO O ← $\frac{23.35}{48+85}$ →

6" PPO O ← $\frac{22.8}{48+62}$ →



Road. 159

A. F. Dixon

x 53129 x

Ellis Dawn

8" $\frac{17.8}{52180}$

8" $\frac{17.5}{52135}$

9" $\frac{20.0}{52107}$

6" $\frac{17.75}{51+58}$

1347

INDEXED ON MAP

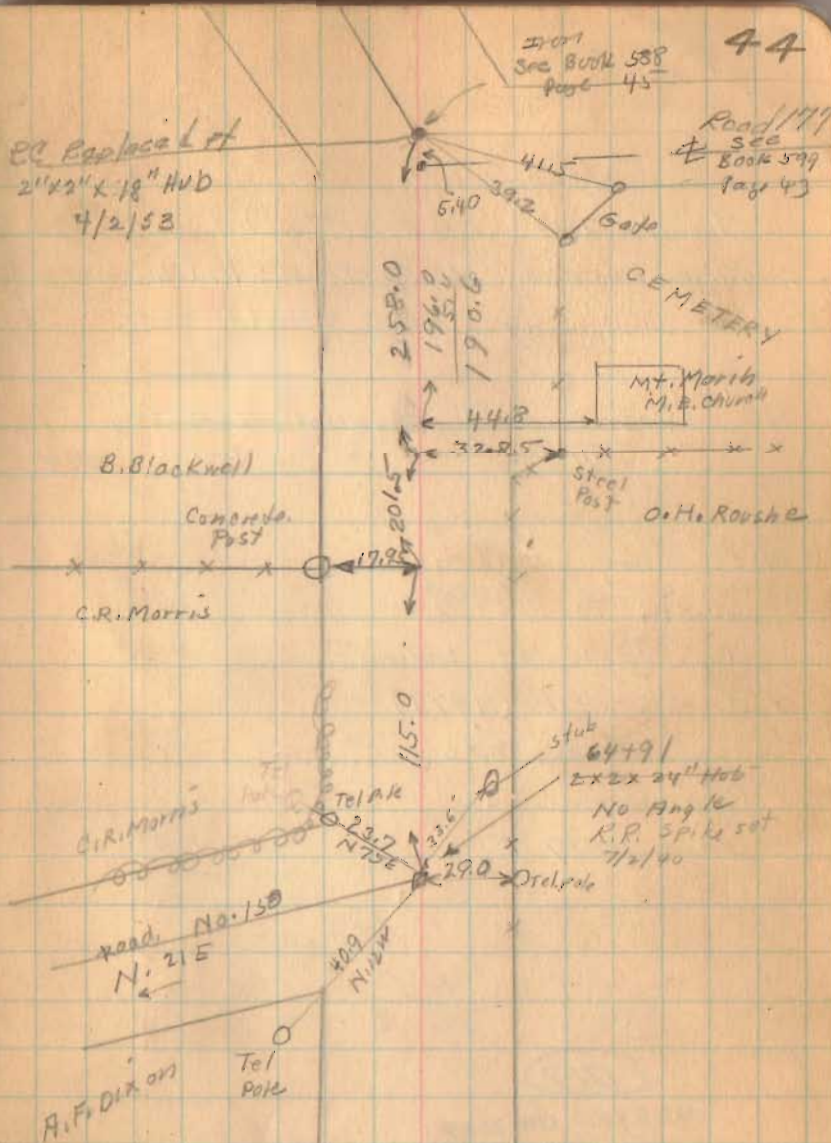
Road. 159

Length 6491 Foot
 Length 1.2293559 Miles.
 Length 1.23 Miles

1347

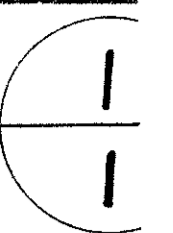
INDEXED ON MAP

EC Peplace Lt
 2" x 2" x 18" Hub
 4/2/58



SR 559 D

ROAD NO. 159
ZANE TOWNSHIP
LOGAN COUNTY OHIO
1936

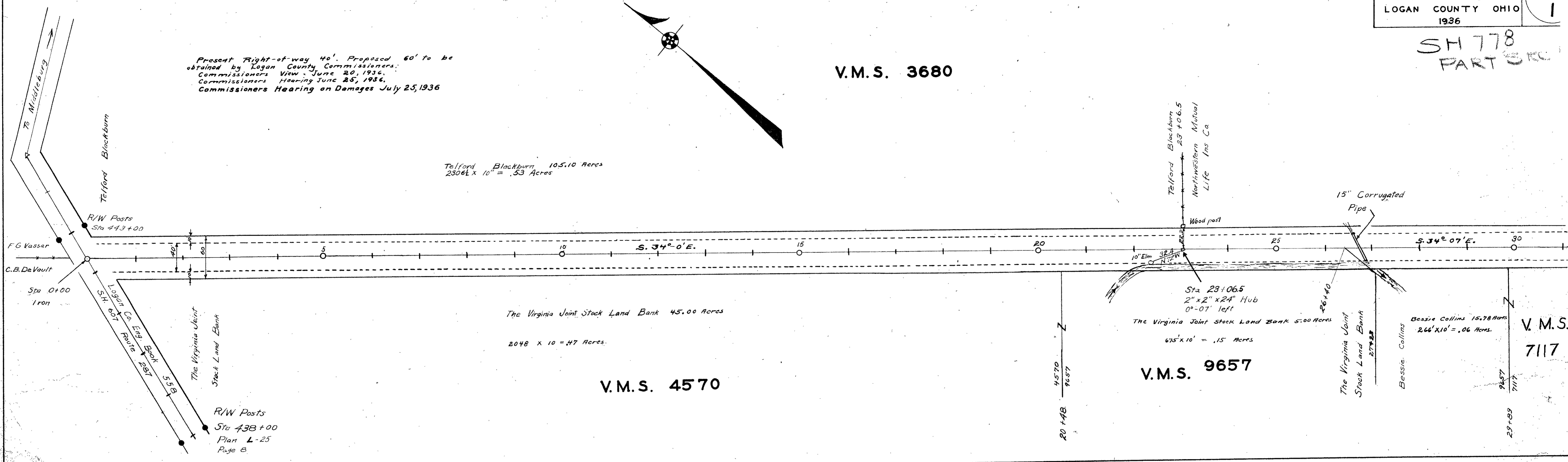


SM 778
PART 3/4

V.M.S. 3680

Present Right-of-way 40'. Proposed 60' to be obtained by Logan County Commissioners. Commissioners View - June 20, 1936. Commissioners Hearing June 25, 1936. Commissioners Hearing on Damages July 25, 1936

Telford Blackburn 105.10 Acres
2306 1/2 x 10' = .53 Acres



The Virginia Joint Stock Land Bank 45.00 Acres

2048 x 10' = .47 Acres

V.M.S. 4570

Sta 23+06.5
2" x 2" x 24" Hub
0°-07' left
The Virginia Joint Stock Land Bank 5.00 Acres
675' x 10' = .15 Acres

V.M.S. 9657

Bessie Collins 15.78 Acres
266' x 10' = .06 Acres

V.M.S. 7117

ROAD 159

40' Road Logan County Road Record No. 1 Page 425
40' Road Logan County Road Record No. 3 Pages 76-79-83
Logan County Engineer's Book No 596 Pages 39-44

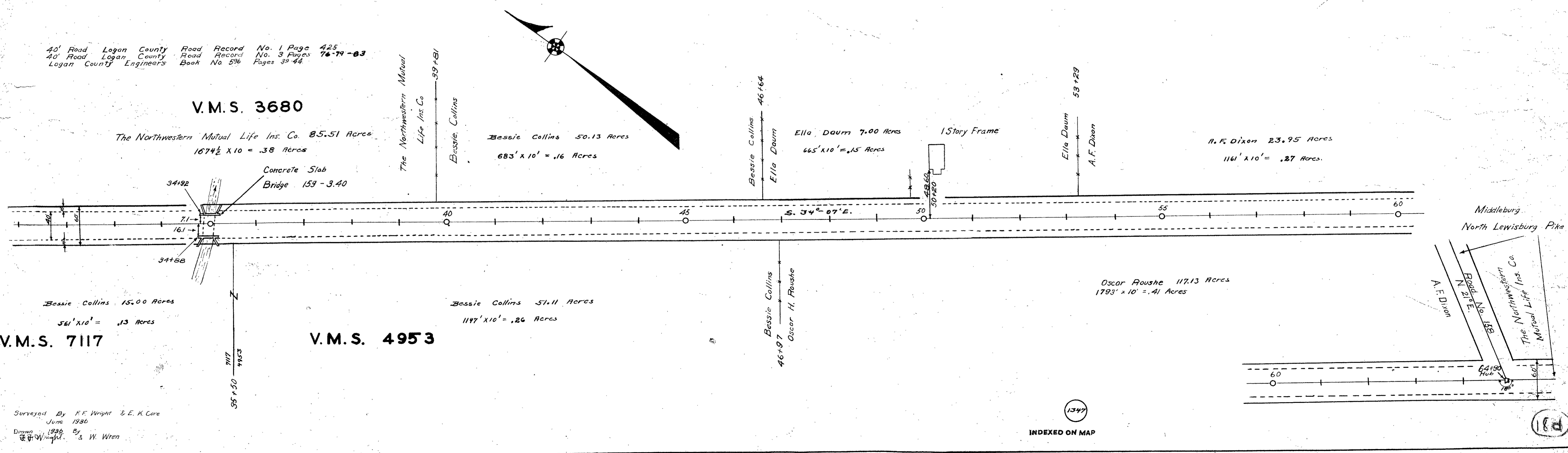
V.M.S. 3680

The Northwestern Mutual Life Ins. Co. 85.51 Acres
1674 1/2 x 10' = .38 Acres

Bessie Collins 50.13 Acres
683' x 10' = .16 Acres

Ella Daum 7.00 Acres
665' x 10' = .15 Acres

A.F. Dixon 23.95 Acres
1161' x 10' = .27 Acres



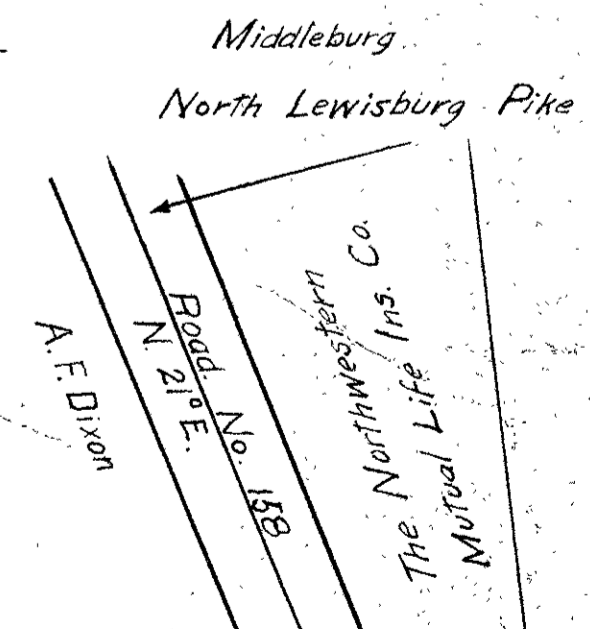
Bessie Collins 15.00 Acres
561' x 10' = .13 Acres

V.M.S. 7117

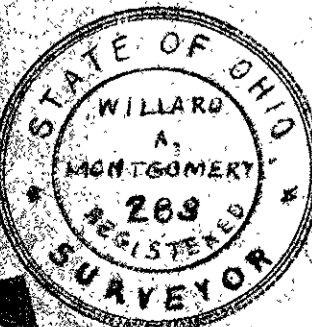
Bessie Collins 51.11 Acres
1147' x 10' = .26 Acres

V.M.S. 4953

Oscar Poushe 117.13 Acres
1793' x 10' = .41 Acres



X-24



Surveyed By F.F. Wright & E.A. Core
June 1936
Drawn 1936 By W. Wren

INDEXED ON MAP

X-24