

(1055) 1P  
Blackburn survey  
Game Twp  
VMS 4570-9657

Survey notes 8014 248



F.M. Green 475

8  
Telford Blackburn  
100.25  
97.02  
75.93

Survey 4570  
Milton Green 110

Mary Green 27.40  
Ebbeliza Christy 25.70  
J.Q. Green 29.80

William Dixon 31.60

A.T. Sidesinger 23.75

William A. West 68.5

A.P. West 88.50

William A. West 75

Survey 3680

Isaac S. Inskeep 121.12

T.C. Johnson  
198.25 52.25

James Taylor 105.50

3  
42.33  
41.00  
William Blackburn 65.48

13  
Telford Blackburn 232.  
240.40

Susan B. Stokes 104.

7  
Telford Blackburn 80  
79.33

Hudson Haines 75.50

Wm Dixon 650  
2.50  
William Blackburn 31.62

L.7 1/2 A. Tallman 5.  
77.02  
78.71  
2.75  
53.33  
10.3.

William Blackburn 23.

2  
William Blackburn 50.40  
51.11

9  
42.22

Newton Creviston 30.68  
43.32

11  
Telford Blackburn 75.50  
76.30

14  
Telford Blackburn 6440  
81.33

14  
Telford Blackburn 1585

Elizabeth Wilson 44

Survey 9657  
9679

13  
William Blackburn 84.50  
92.68

Elizabeth C. Wilson 85.

Survey 4953

Abner W. Morton 238.

12  
75.92  
25.22  
Telford Blackburn 91.25  
101.01

Survey 9679

John Creviston 78.65

Elizabeth C. Wilson 15.

Survey 7117

Thos. Dixon 10.50

Thomas Dixon 22.

William & Edward Patrick 100.

James H. Edwards 48.  
46.34

Mary M. Roberts 30.25

N

N. 55 1/2° E. 2.2.01 Ch.

S. 33 3/4° E. 43.24 1/2 Ch. 37.54

N. 33 3/4° W. 132.90 Ch. 57.54

INSKEEP TRACT. 9° W 13 240.40 Acres

N. 57 1/2° E. 6.92 Ch.

S. 33 3/4° E. 19.96 Ch. 15.90

S. 56 1/2° W. 7 Ch.

N. 33 1/2° W. 10 Ch.

S. 56 1/2° W. 2.117 Ch.

1996  
4324  
43.20

27.84  
16  
28.00

27.84  
115  
139.20  
27.84  
27.84  
3.201 60

240.40  
184.95  
55.42

105.10 correct  
85.5-1  
50.13  
240.74

105.10

43.24 1/2  
87.54  
87.0 1/2

85.51

184.989  
78  
185.76  
3.20  
188.96

83

16.55  
13.67  
30.52  
10.39  
20.13

37.54  
2.59  
34.95

37.54  
4.23  
42.77  
13.67  
16.83  
73.29

78.29  
61.75  
11.54

16.83  
11.54  
5.31

11.54  
6.15  
10.39

55.67 W 34.55  
27.54  
27.43

55.42  
78  
54.64  
3.20  
51.44

50.13

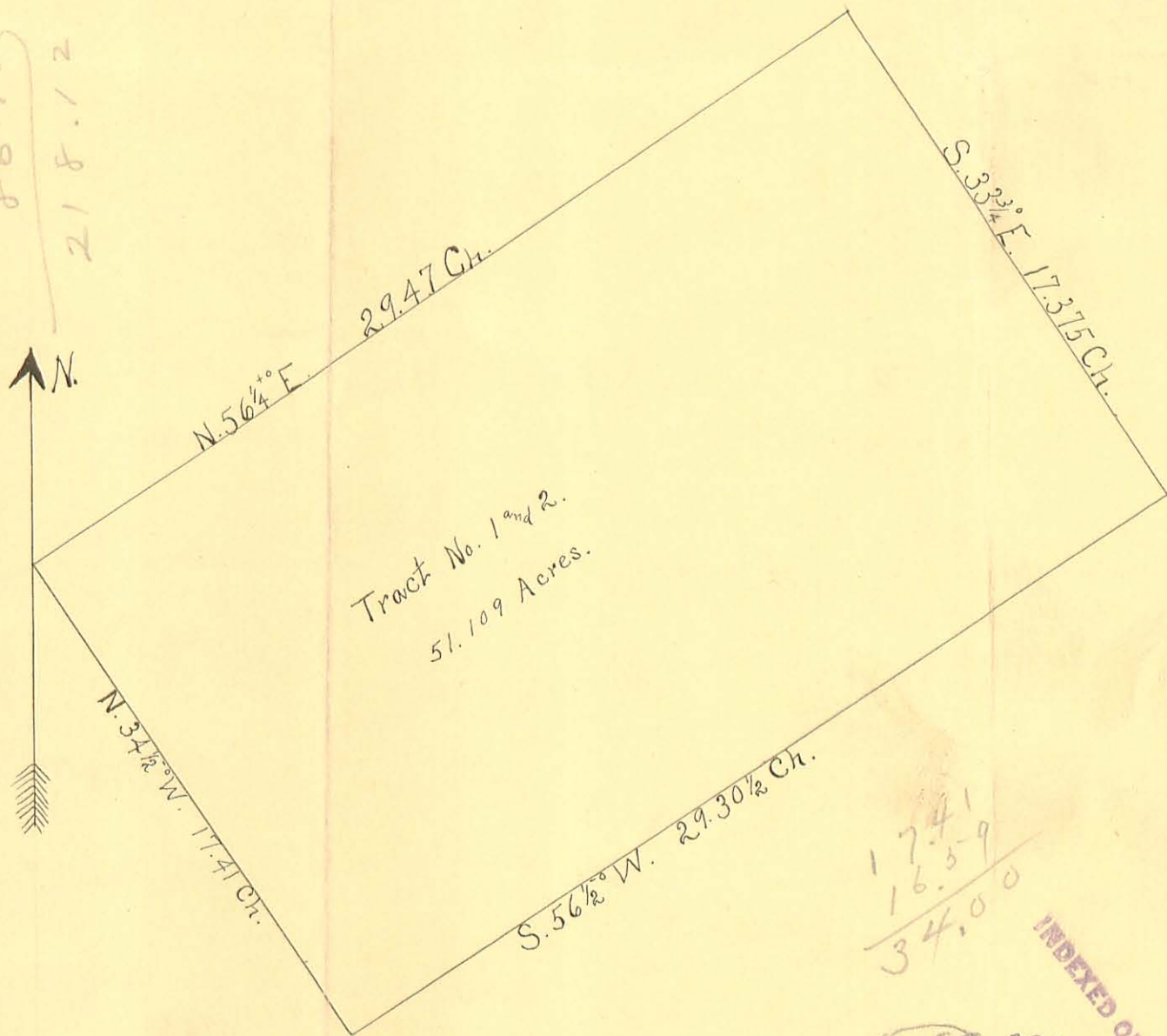
709  
1.10  
707  
7.799

(1055) 2P

INDEXED ON MAP

Blackburn Survey  
Survey Notes  
Book 248  
Jane Turp  
V.M.S. 3680

50.13  
 51.11  
 18.  
 15.76  
 132.02  
 86.10  
 218.12



17.41  
 16.59  
 34.00

INDEXED ON MAP

(1055) 3P-1

Blackburn Survey.

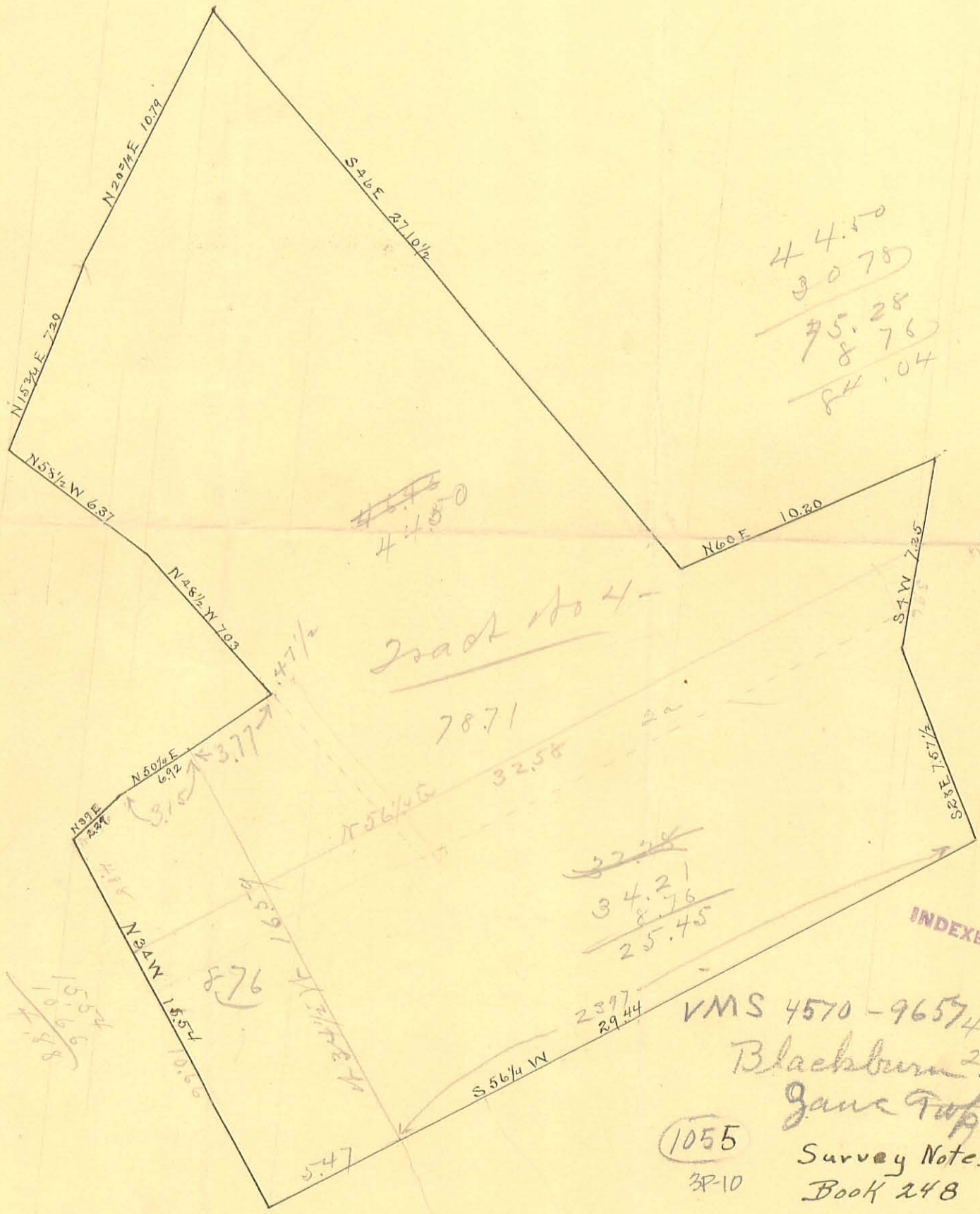
Jane Trup

V.M.S. (4953)

Survey Notes

Book 248

4160  
 4450  
 ---  
 8610



78.71  
 533  
 ---  
 84.04

44.50  
 3078  
 ---  
 75.28  
 876  
 ---  
 84.04

~~46.46~~  
 4450

125  
 306  
 ---  
 5.29

779  
 396  
 ---  
 3.83

Track No 4

78.71

~~32.28~~  
 34.21  
 876  
 ---  
 25.45

INDEXED ON MAP

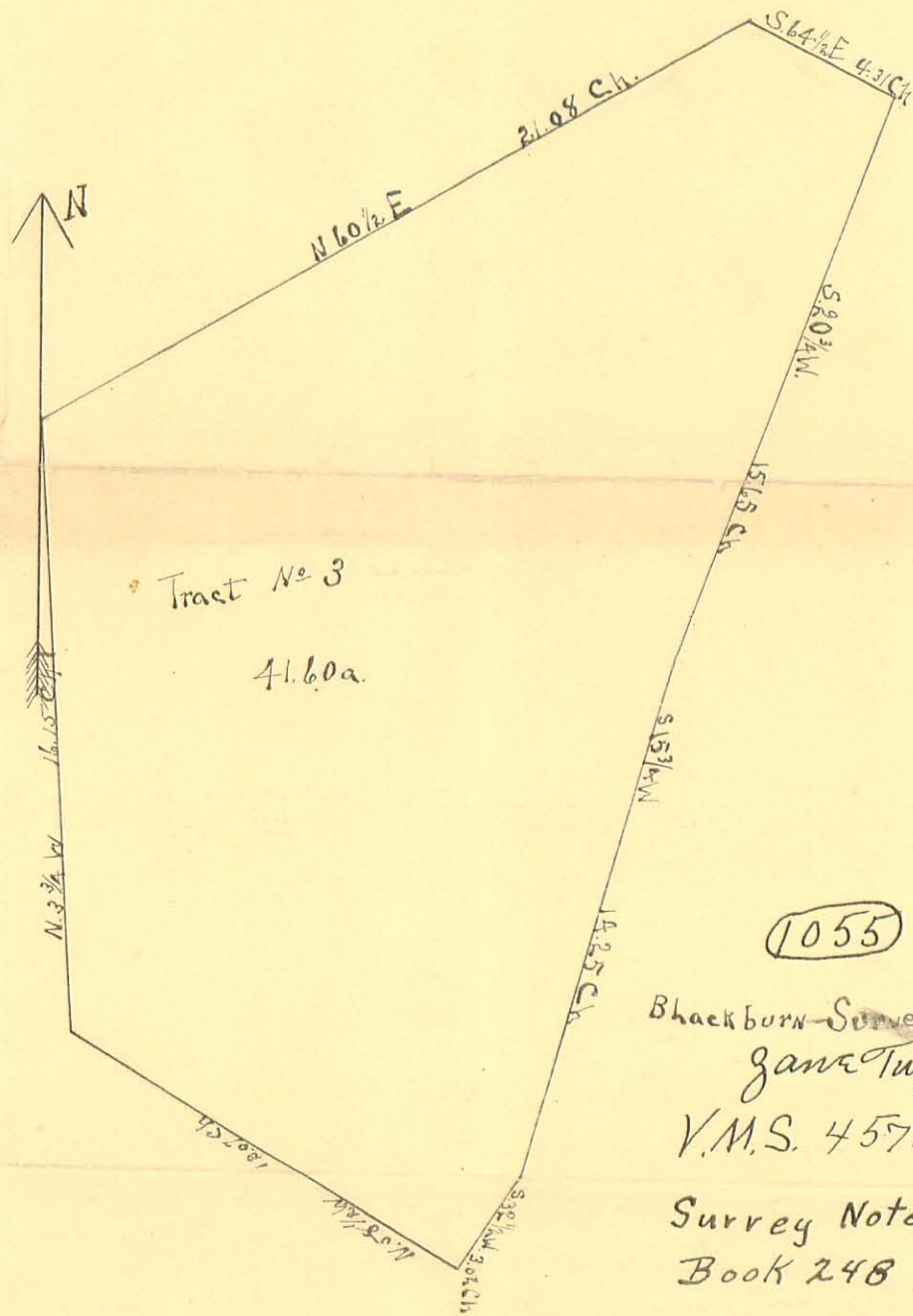
150.54  
 10.66  
 ---  
 8.88

876

VMS 4570 - 96574 4.50  
 Blackburn 23.45  
 Gane Top 8.71  
 Survey Notes  
 Book 248

1055  
 3P-10

29.44  
 23.97  
 ---  
 5.47



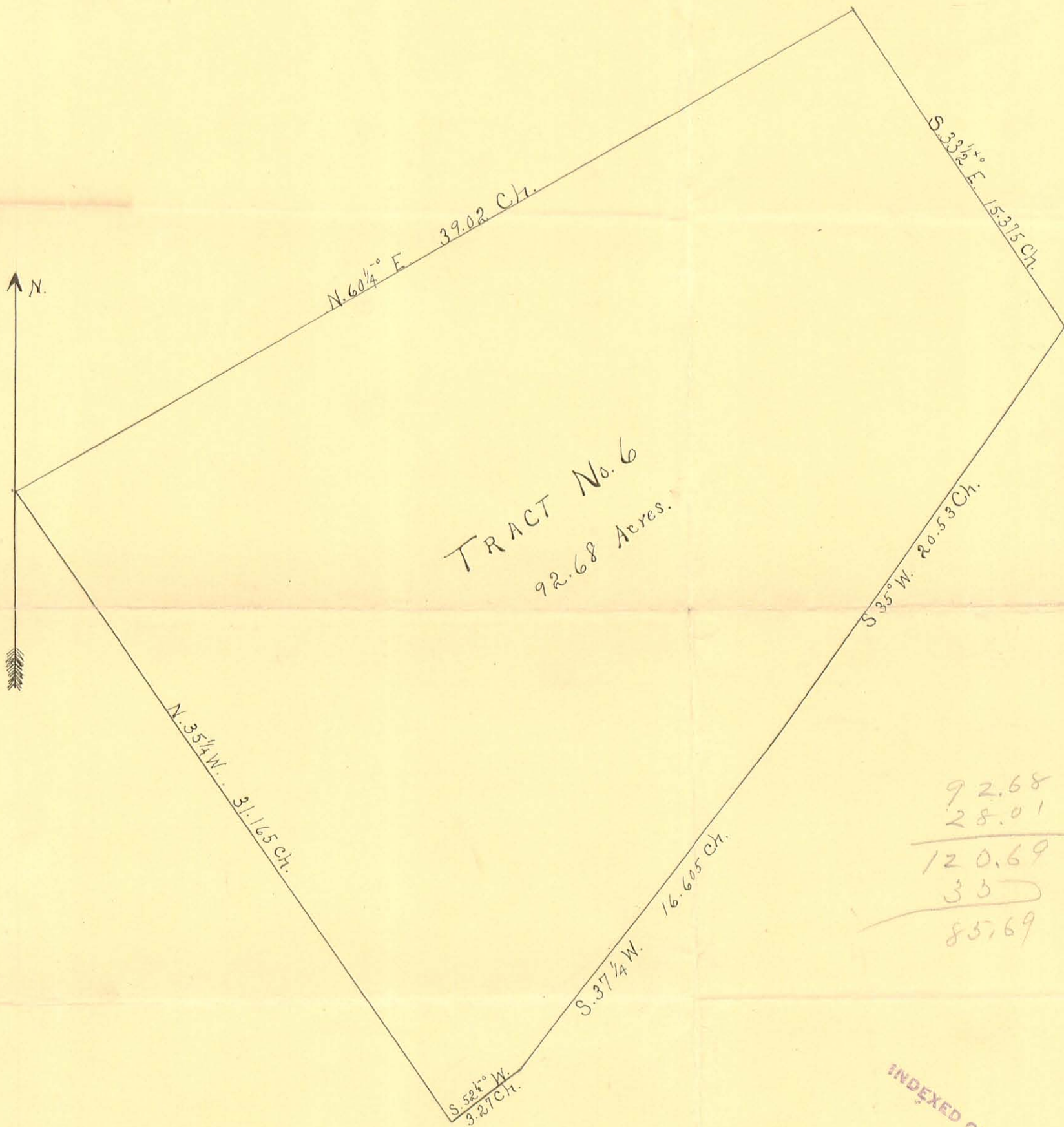
(1055) 3P-2

Blackburn Survey,  
Jane Twp

V.M.S. 4570

Surrey Notes

Book 248



92.68  
 28.01  


---

 120.69  
 33  


---

 85.69

INDEXED ON MAP

Blackburn Survey.  
 Game Twp  
 (1055) 3P-3  
 VMS 9657  
 Survey Notes  
 Book 248

INDEXED ON MAP

(1055) 3P-4

Blackburn survey  
Gane Twp

V.M.S. 4570

Survey Notes  
Book 248

N.

20.12  
7.11  
-----  
13.01

N. 60 1/2 E. 20.12 Ch.

TRACT No. 7.  
79.33 Acres.

S. 17 1/2 E. 40.29 Ch.

N 17 1/2 W. 40.21 Ch.

S. 60 1/4 W. 14.06 Ch.

S. 60 W. 6.18 Ch.

97.62  
51.33  
-----  
148.95

45  
15  
-----  
27.30

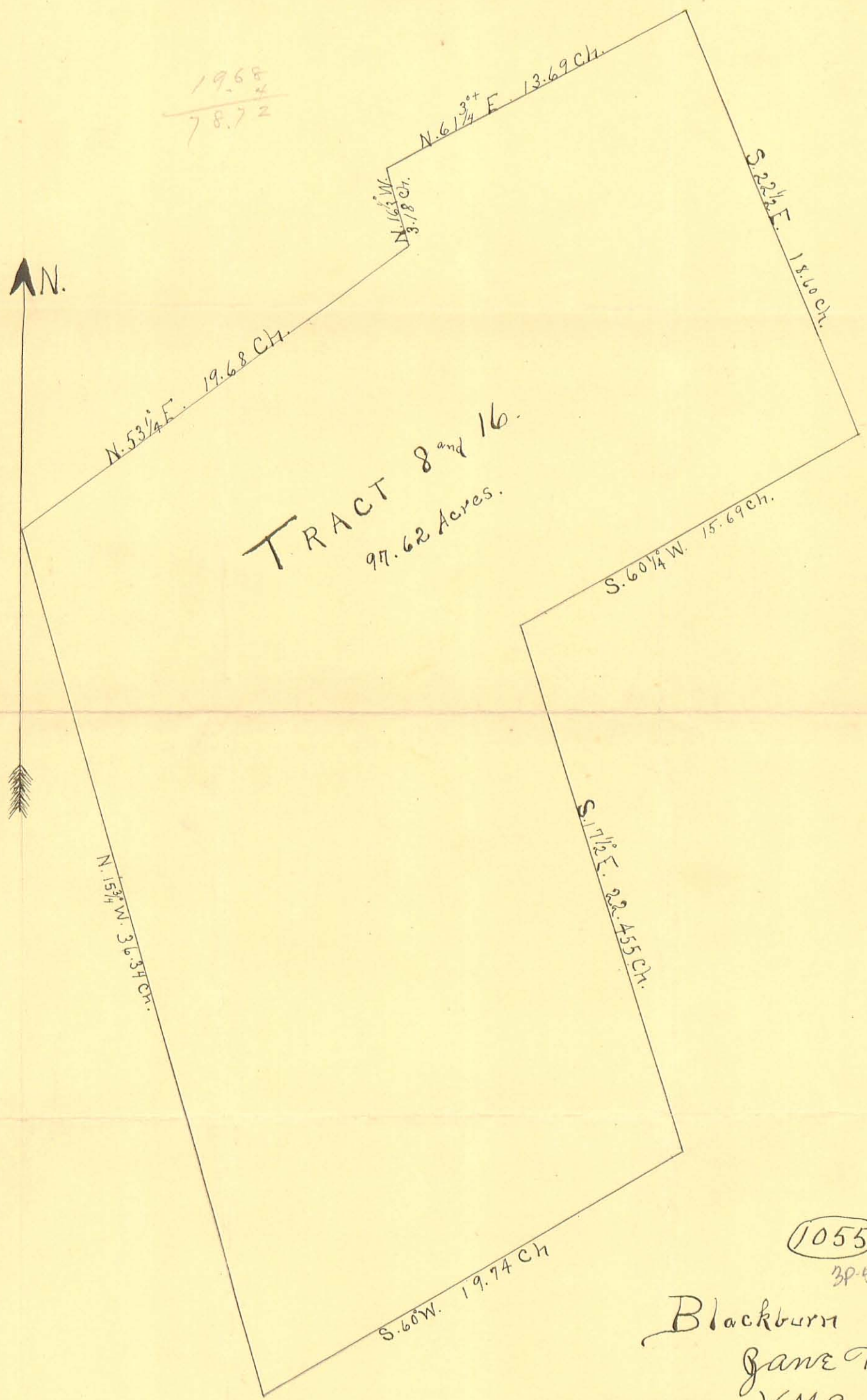
40.27  
1.52  
-----  
38.75

14.06  
94  
-----  
13.12

7.12  
6.18  
-----  
.94

Blackburn Survey.

1968  
78.72

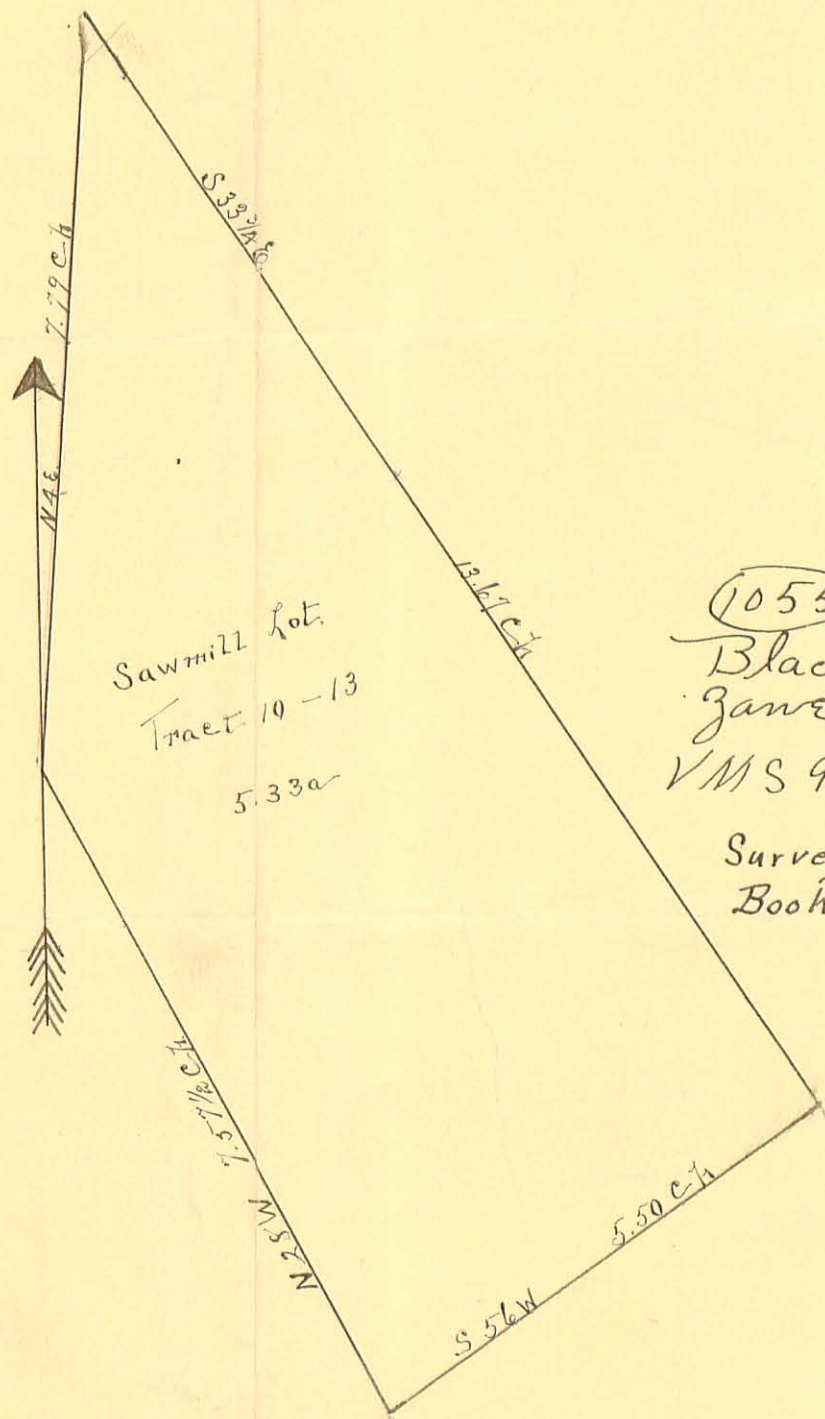


INDEXED ON MAP

1055  
38-5

Blackburn Survey.  
Game Twp  
V.M.S. 4570  
Survey Notes  
Book 248

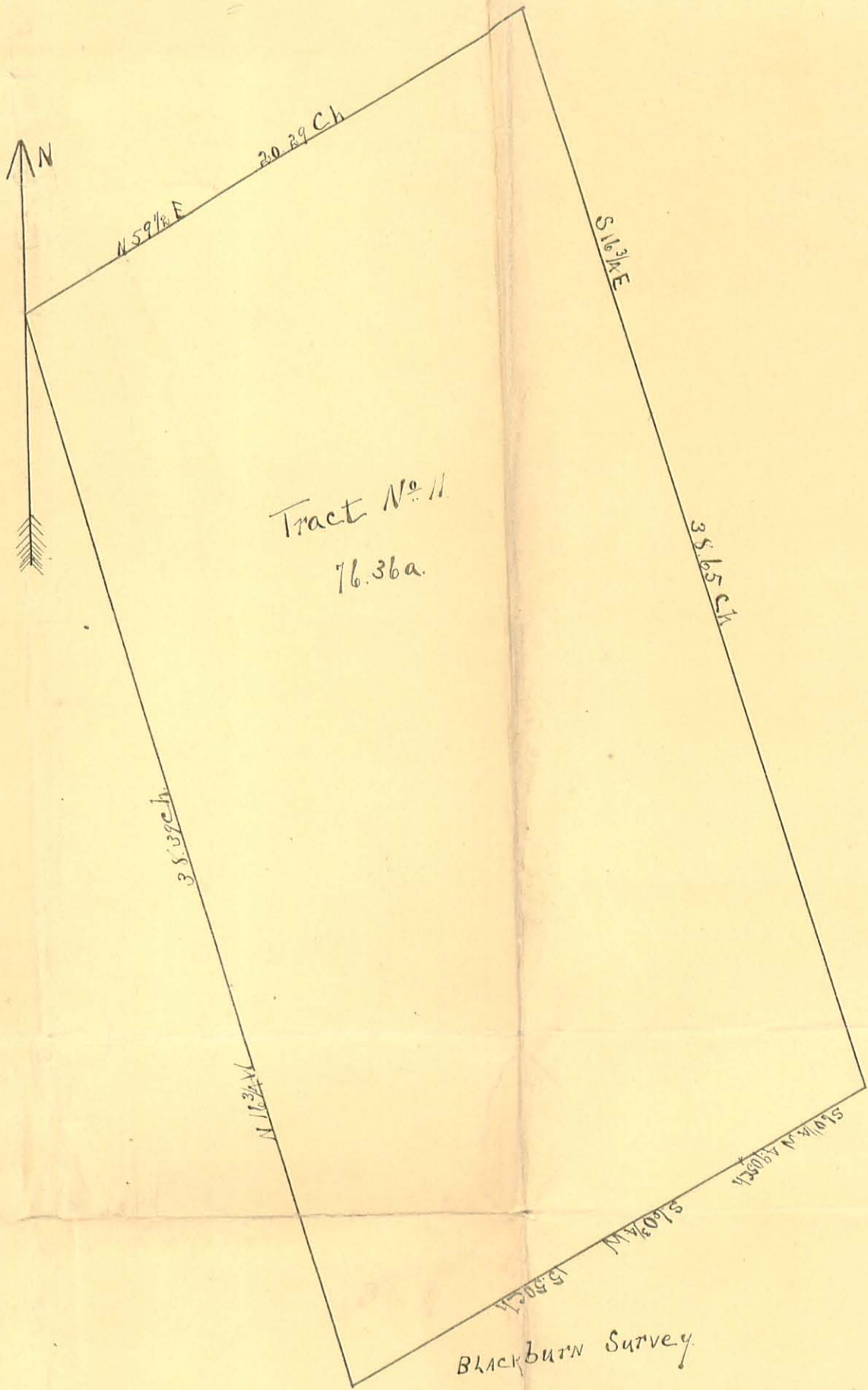




Sawmill Lot.  
 Tract 10-13  
 5.33a

(1055) 3P-U  
 Blackburn survey  
 Gane Twp  
 VMS 9657-7117

Survey Notes  
 Book 248



Tract No 11  
76.36a.

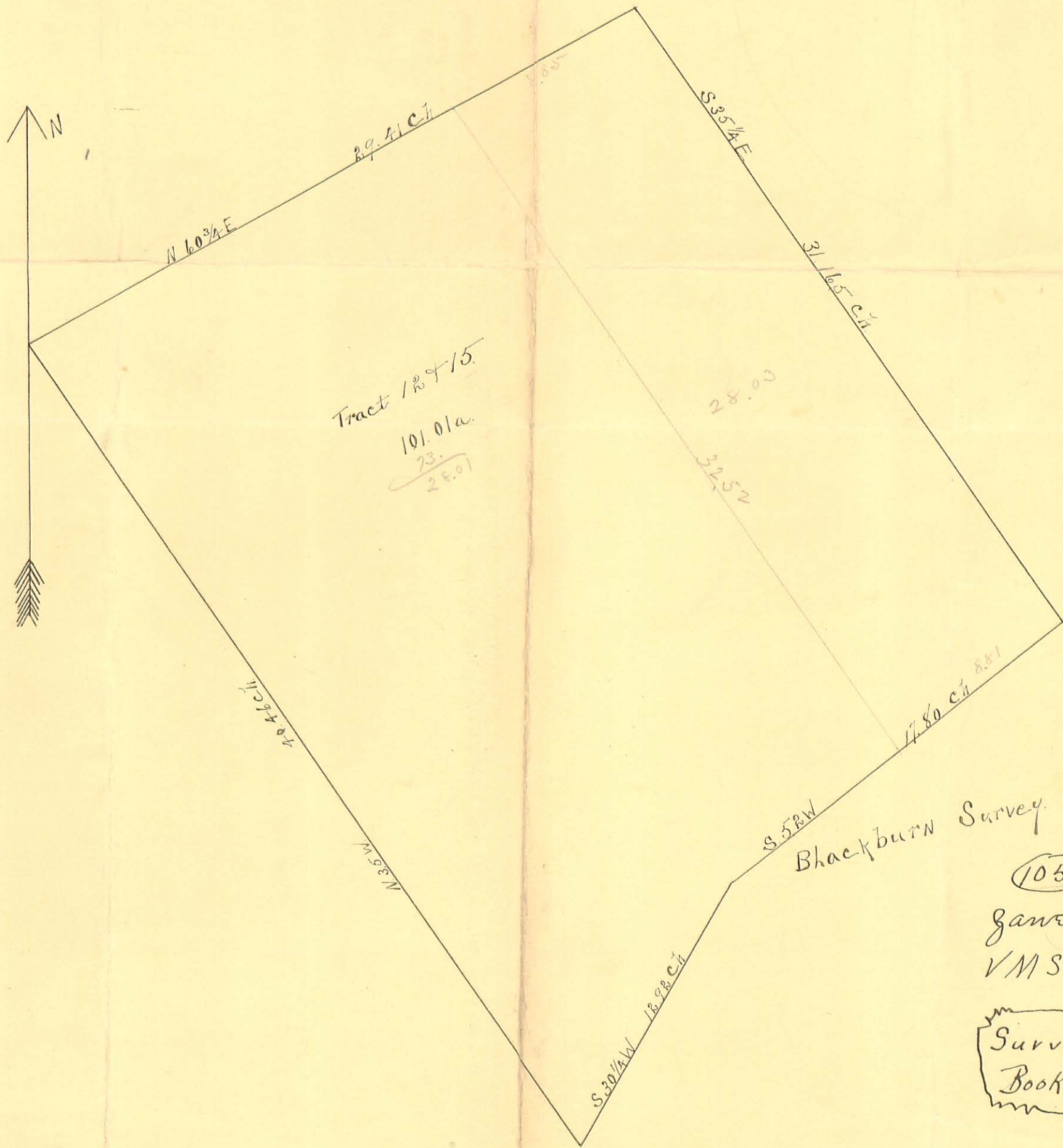
Blackburn Survey

15.50  
4.90 1/2  

---

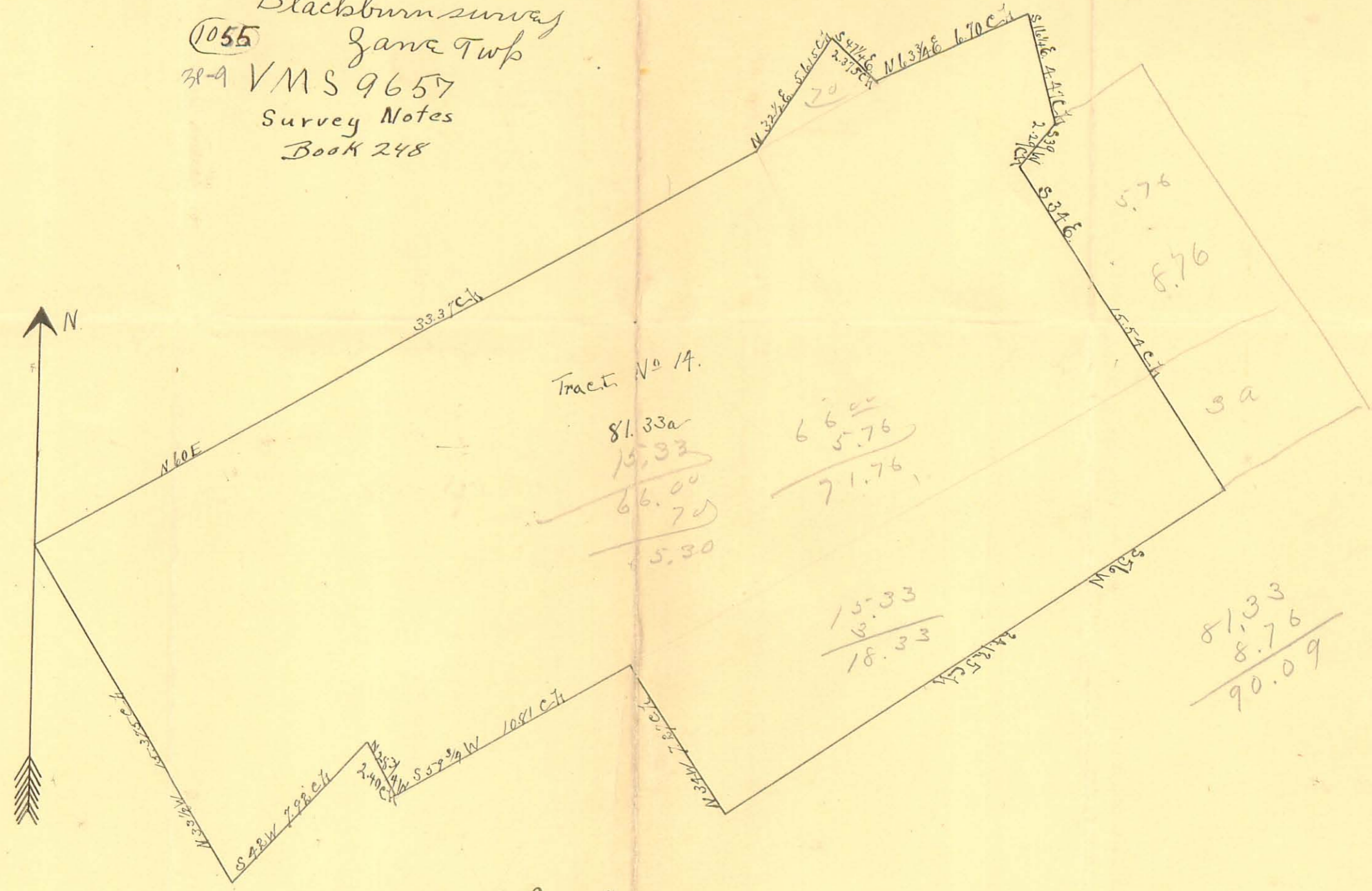
20.40 1/2

Blackburn survey  
game trap  
V MS 4570  
Survey Notes  
Book 248  
INDEXED ON MAP  
(1055) 28-1



(1055) 37-B  
 Gane Twp  
 VMS 9679  
 Survey Notes  
 Book 248

Blackburn survey  
 (1055) Jane Twp  
 38-9 VMS 9657  
 Survey Notes  
 Book 248



Tract No 14.  
 81.33a  
 15.33  
 66.00  
 7.00  
 5.30

66.00  
 5.76  
 71.76

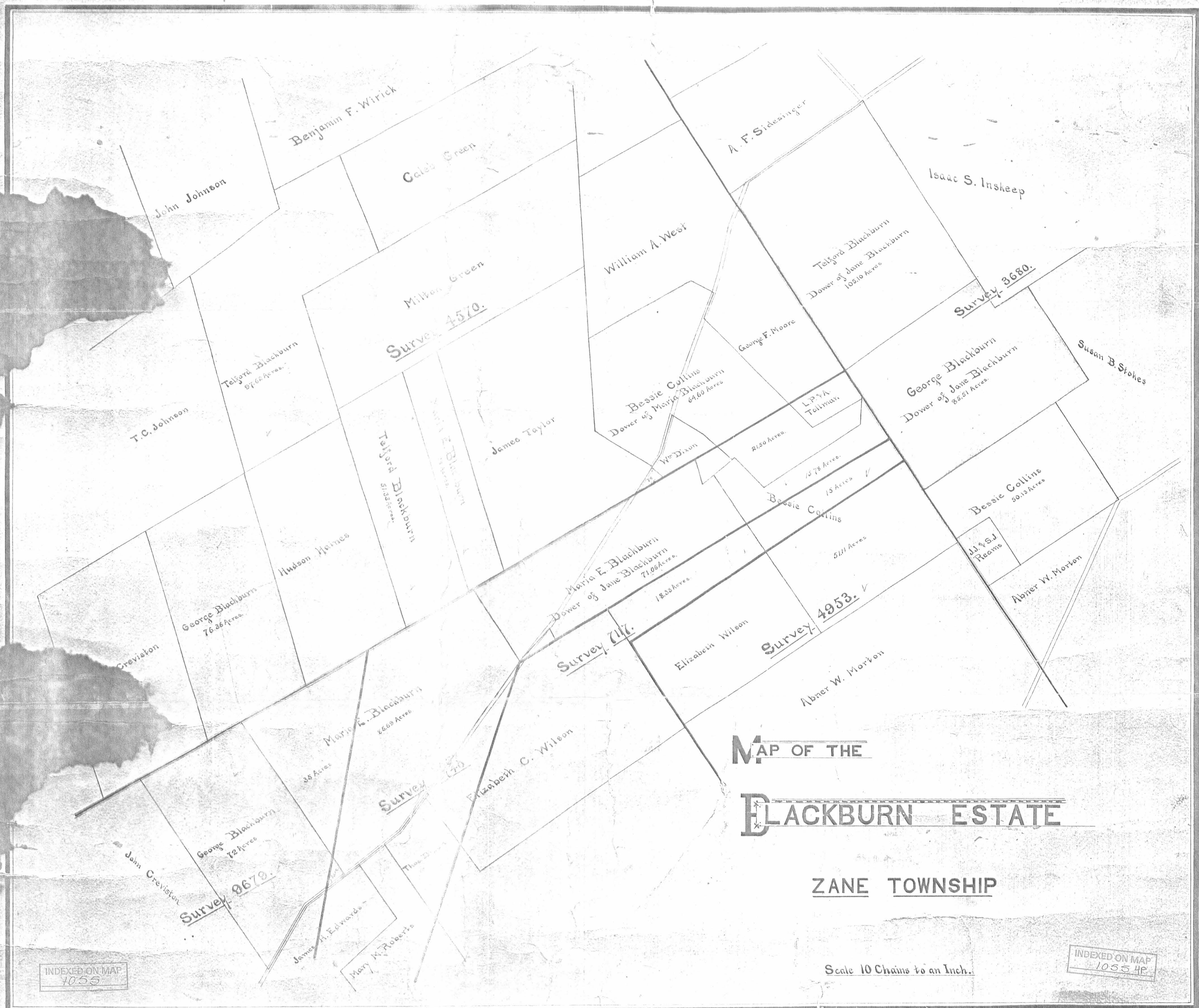
15.33  
 3  
 18.33

81.33  
 8.76  
 90.09

24.12 1/2  
 5.47  
 29.59 1/2

Blackburn Survey.

INDEXED ON MAP  
1055



**MAP OF THE  
BLACKBURN ESTATE**

**ZANE TOWNSHIP**

Scale 10 Chains to an Inch.

INDEXED ON MAP  
1055

INDEXED ON MAP  
1055 4E

(Tract 13)

Delford Blackburn 232

acres Tract June 6, 1894

Line "A" Start at stake set  
to-day for NW  $\angle$  of tract

N  $55\frac{1}{2}$  E at 3.63 centre of  
H.M. & Mingo fikes with centre  
of fikes - 28.01 - to stone  
line line & centre of fikes

Line B - ~~S  $33\frac{1}{2}$  E~~  
set west 10'  
" east 3'  
at 43.24  $\frac{1}{2}$  stone corner  
came out 14' west - total westing 7'

Line "C"  
N  $57\frac{1}{4}$  E 6.92 to stone corner

see Survey

1055

Zone Twp  
Range R

Line "D" S  $33\frac{3}{4}$  E  
set east 8'  
" west 20'  
came out at corner by fence  
set stake at 19.96  
came out 15' 4" west total westing  
3' 4"

Line "E" S55 $\frac{1}{2}$ °W of cor-  
set north 20'  
came out 20' north of stake set for  
7.08 $\frac{1}{2}$

Line "F" S34 $\frac{1}{2}$ °E  
20.46 to stone in road  
SE to track

Line "G" with south line  
S56 $\frac{1}{2}$ °W  
set north 20'  
came out 19'3" north of stone  
SE to Reams 7 acre lot -  
at X.1.17

Line "H" with east side of Reams  
7 acres N33 $\frac{1}{2}$ °W  
10 $\frac{00}{00}$  to stone N85 to 7 acres -

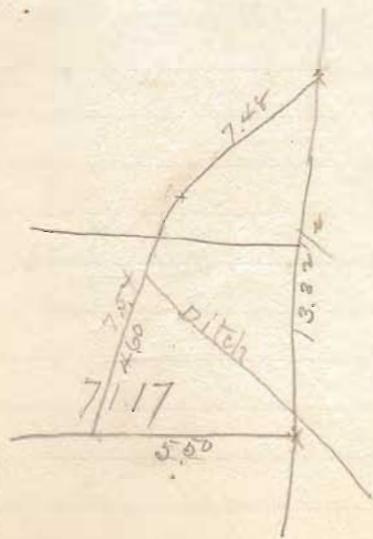
Line "I" with north line of 7 acres  
S56 $\frac{1}{2}$ °W  
7 $\frac{00}{00}$  to stone in road and  
Survey line NW to 7000  
track -

Line J with Survey line and  
center of road  $133\frac{1}{4}$  ft  
at 16.85 set stake  
(set this stake east 2 ft.)

Line K with North line 4953 -  
 $356\frac{1}{4}$  ft 5.50 set stake by  
fence

Line L with Delford's west  
line as shown by Morton  
 $126\frac{1}{2}$  ft.  
at 4.60 cross ditch and run  
up east bank  
at 7.54 set stake by fence  
post on each side of ditch

Line "M"  
with fence on east side of ditch  
at  $4\frac{1}{2}$  ft  
at ~~7.60~~ set stake 7.79  
correct distance ~~7.45~~





Line "A"

Continuation of line "J"

N 33° 41'

at ~~13.54~~<sup>13.67</sup> pass end of line

"M" — (set this east 3' 7")

at 56.44 come to stake at

begin came out 8' 8" west  
of stake set for begin

Center of pipe was passed at

56.44

2.59

53.85

56.44

10.67

42.77

37.54

5.23

William Blackburns

42 acre tract (Tract 133)

Line "A" start in fence stake  
set stake with fence east line  
Zallman on south.

S 20 1/2 W

at 4.86 fence line Zallman

& Blackburn on south

at 15.65 to stake in road

Line "B" with road S 15 1/4 W

at 7.20 line Blackburn &

Dix on south

Line "C" with fence

S 15 1/2 W (same as before)

7.05 set stake in fence -

Line "D" with fence

S 32 1/2 W 3.02 set stake

in line Blackburn & Taylor -

Line "E" with Taylor's line

N 58 1/2 W O.K. cor. N 58 1/2 W

set west 30'

came out 35' west

set stake by fence at

12.07

Line "F"  
with Taylor's line  $N 3\frac{1}{2} W$   
set east 10'  
16.15 to stone & to  
Blackburn & West & Taylor  
line -  
came out 15' east. OK. cor.  $N 3\frac{3}{4} W$

Line "G" with Harte's line  
 $N 60\frac{1}{2} E$   
set north 10'  
" south 4'  
(set by wire fence - look out for bearing.)  
came out  $9\frac{1}{2}$  north total  
nothing  $3\frac{1}{2}$   
\$1.08 to double posts for wire  
fence -

Line "H"  
with Harte's line  $S 64\frac{1}{2} E$   
4.31 & beginning stake in pipe

William Blackburn's 27 acres

Line "A" start from stake set -  
fence for AWR to Tallman (see  
line "4" track A. 3)

2<sup>nd</sup> east 10'

S 46 1/2° E OK, csc - S 46° E

at 27.10 1/2 stone corner to

Tallman & Blackburn

came out 22' east total

easting 12'

Line "B" with Tallman's south  
line N 60° E at 10.20  
2<sup>nd</sup> stake in ditch

4<sup>th</sup> track  $\frac{34 - 26}{5} = 27.20$

Line "C" with west bank of  
open ditch (correct line "D"  
Track 13) S 41°

7.25 (dist in deed)

with Black walnut 10" S 27 1/2°

13 1/2 lks

Line "D" with west bank of ditch  
and across field S 27 1/2° (S 28°)  
7.57 1/2 came out 5' 5" west  
of stake at end of line  
1 1/2" of track as corrected -

93.50  
28.42  
4/116.52  
29.13  
5.10  
24.63

Line "E" with north line 4953

S 56 1/4 W

at 23.97 Stone corner to Mrs

Hilsons land -

at 29.44 double fence post -

N. line Mrs. Hilsons land for <

to Jelford & Hilliam

Line "F" with Dixon's  
east line start from stakes  
at end of line "B" Tract  
No. 3 -

S 58 1/2 E 6.37 to Big < Stone

Line "G"

set east 10'

S 48 1/2 E

set east 10'

came out 20' 8" east

at 7.03 set stake for S & <  
to Dixon.

Line "71"

with south line of Dixon

set south 10'

S 49 1/2° W 8 1/2' cor S 50 1/4° W

at 6.92 stone SWR to Dixon

comes out 16' south total

south 6'

Line "J" S 34° E 15.5'

set east 10'

to 2 posts at end of line "E"

comes out 10' east

Line "I"

S 39° W

at 2.29 set stake

for corner in old fence row.

S 39° W

William Blackburns

50 acres

Tracts 1 & 2

Line "A"

Start from Stone N.E. to  
the Wilson

Set east 20'

S 34 1/2° E

Set west 30'

17.41 set stake in Morton's line

Line "B" on Morton's north  
line

Set south 26'

S 56 1/2° E 29.30 1/2 set stake

came out 36' south of  $\angle$  found  
by measuring 52 1/2 the south of  
ANZ to Pears 7 acres -

which 16.85 from end of line "g" tract 13 -

$16.85 + 52 1/2 = 17.37 1/2 = 69.50$  rods dist

called for in deed -

produce survey line south to interest

Zelfords Blackburn's land - tract 14-

Line "A"

start at double fence post

1/2 mi of line "E" tract 4)

set North 20'

856 ft 24 1/2 set stake

by Walnut tree 14'

in east line Eliz. C. Wilson

Line "B" with Wilson

east line N 34 ft 7.27

to stone

Line "C" S 59 3/4 ft

10.81 to walnut tree corner

Line "D" N 28 3/4 ft

2.40 to stake in south side

of fence

Line "E" - S 42 ft

7.92 to stone on north side

of fence



3337  
133.48

Line "F" N 38 1/2° E  
set west 10'  
set stake in road at 15.37 1/2  
came out 16' west total  
westing 6'

Line "G" with road  
N 60° E  
set south 8'  
came out 2' 8" south, at  
53.37 set stake at  
intersection

Line H. with Urbana Pike  
N 32 1/2° E 5.61 1/2 to line of  
Blackburn & Dickson on south  
at 5.74 end of line "G"  
(Tract No 3)

Line "I" S 47 1/4° E  
2.37 1/2 to corner first

Line "J" with Dixon line  
N 63 3/4° E 6.70 set stake  
for corner -

Line K.      \$16/4 @  
4.47 to store at end of line  
"H" track No. 4-

William Blackburn

Tract No. 6 - June 22 1899

Line A" with north line of  
 Survey. 359 3/4 ft  
 front end of line "F" tract 14  
 at line of Telford on  
 north 14.00  
 at 34.11 1/2 SEE tract No 7 -  
 at 39.02 NW tract No 6 -  
 came out 22' 8" too far south  
 39.02 O.K. case S 60 1/4 W

$$\frac{14.00}{39.02} \times 22' 8''$$

$$\begin{array}{r} 2267 \\ \underline{1408} \\ 13602 \\ 90680 \\ 2267 \\ \hline 39.02 \overline{) 3187402} \quad 8.17 \\ \underline{31216} \\ 6580 \\ \underline{3902} \\ 26780 \end{array}$$

$$\frac{34.12}{39.02} \times 22' 8''$$

$$\begin{array}{r} 34.12 \\ \underline{7267} \\ 23855 \\ 20472 \\ 6824 \\ \underline{6824} \\ 3902 \overline{) 77350.04} \quad 19.8 \\ \underline{3902} \\ 38350 \\ \underline{35718} \\ 32120 \end{array}$$

Line "B" with west line of tract  
set east 4'

S 35 1/4 E

came out 6' east of stake set  
with line fence and in center  
of fence (did call for stone)

31.16 1/2

Line "C" on Telford's tract

12 x 16 -

S 52 W with center of fence  
17.80 set stake in center of  
fence.

Line "D" with center of  
fence S 30 1/2 W

12.92 set stake in center

of fence

Line "E" with west line tract

12 set west 6'

N 35 W

set west 8'

" " 6'

came out 22' west set stake  
in center of road -

40.46

22  
20  

---

2

Line "F" N 60° 48'  
with West Liberty road  
at 13.91 set stake at SW 2 "Tract 11"

at 29.41 stake at end of line "A"  
this track

Line "B" with center of  
Middleburg pipe from end  
of line "B"  
N 52° 1/2' E 3.27

$$\begin{array}{r} 4) 79.5 \\ \underline{19.87\frac{1}{2}} \\ 3.27 \\ \underline{16.60\frac{1}{2}} \end{array}$$

Line "H" with center of pipe  
N 37° 48'  
16.65 1/2 set stake in pipe.

Line "J" ran for stone  
end of line "E" "Tract 14"  
N 35° 48'  
came out 8' south of corner  
stone 20.53  
O.K. case N 35° E

# Lilford Blackburn

Line "A" start at end of  
line "F" track 14.  
~~to 93/2~~ (to 60' E)  
at 6.15 set stake for 85'  
Track No 7.

6.15
14.08
20.23

Line "B" to 17 1/2 ft  
set east 20' 40.29  
at ~~40.29~~ came out 11 1/2'  
east of old corner stake  
wt: Ash 32" 53 1/2" 6 ft -  
wisting 8 1/2"  
O.K. case to 17 1/2 ft

# Track No. 7 -

Line "C" set north 10'  
56 1/2 ft  
came out 10' north of stake set  
20.12

Line "D" with Greina west  
line set east 20'  
to 16 1/2 ft  
came out 50' east  
2093 1/2 set stake for 2  
O.K. case - to 17 1/2 ft

2093 1/2
1.82
2245 1/2

Line "E" with Ernie north  
line N 60 $\frac{1}{4}$  E  
set south 20'  
came out 20' south  
at 15.39 set stake with  
fence

Line "F"  
with east line of "25 acre  
tract 16" (set west 36')  
(set west 40')  
N 24 W  
set east 28 ran with bottom  
of ditch along line ~

N 22 $\frac{1}{2}$  W means correct course  
came out 12' west (O.K.)

18.60

Line "G"  
with north line  
set north 60'  
S 61 $\frac{1}{2}$  W  
came out 60' north of  
stake set by self for <  
at 18.69

Line "H"  
set west 10'  
S 16 $\frac{1}{2}$  E  
came out 10' west  
3.18 set stake by ditch

Line "J"  
with ditch -

S 53 1/4 E

set north 20'

came out 22' north of  
stake set on bank of  
ditch for corner -  
at 19.680

Line "I" set east 40'

S 75 1/2 E

S 15 3/4 E

came out 30 feet

at 36.34

set stake for corner by  
fence

Line "K"

N 60 E

19.74 set stake

Line "L"

from stake at end of line  
"G" set east 6'

S 17 1/2 E

O.K. Cor. S 17 1/4 E

at 1.52 face end of line "K"

set east 6'

" " 10'

" " 2'

" west 2'

came out 29' east at

22

7 casting

6  
6  
10  
2  
24  
2  
22

~~40.21~~  
40.27



# Track No. 11-

Line "A" start from stake  
 set for 58.65  
 at 16 1/4 ft off cor. at 16 3/4 ft  
 set west 20'  
 " " 20'  
 came out 14' 8" west at  
 58.65  

$$\begin{array}{r} 20 \\ 14.8 \\ \hline \text{casting} \rightarrow 25.2 \end{array}$$

Line "B" (back line track 11)  
 S 59 1/2° W  
 at 20.29  
 set stake for corner

Line "C"  
 set west 20'  
 S 10 3/4° E  
 set east 23'  
 " west 6'  
 " east 6'  
 " west 14'  
 at 38.39 came out 23 1/2'  
 west of stake set for  
 track to track 10 -

38.39	30
<u>        </u>	6
153.56	14
	<u>50</u>
	28
	<u>22</u>

Marion Blackburns Span

Line A" with lining of  
track to H.  
534.8 4.88 set stake  
with wild cherry 10"  
H-3114 47 lbs

Line B-  
156 1/2 E at 32.97  
set stake in line "C" track  
to H. 329 from begin & 396  
from end of said line

June 29 - 1894

July 3 - 1894

82.67  
10.96  

---

21.71  
40  

---

21.81

5414  
545 1/2 6  
52 1/2

967 - 1000  
33 34  

---

1000 1524

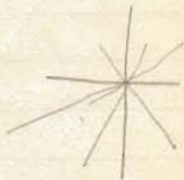
17 3/4

5  
52 1/4  

---

57 3/4

9.49 1.2.65  
51



4 1/2  
3 3/4  

---

7 5/4

Jane Blackburn

Shan June 29 1892

~~Instrup Tract -~~

~~Line "A" ran S 33 7/8 E 5.31 from  
end of line "J" "Tract 13"~~

~~wit: walnut <sup>6"</sup> on east side of  
road S 45 1/4 E 121 the -~~

~~Line "B" N 56 1/2 E at 27.86 ft  
set stake for corner  
N 34 1/4 W 1.15 from end of  
line "E" "Tract 13"~~

Maria E. Shors tract 7.

Line "A"

Start at NW tract 12-  
with West Liberty road  
86 1/4 ft 94 lks - set stake  
for corner -  $\frac{.90}{2.18}$   
7.12

Hit sugar 17" growing against  
kick, Wt 1/2 ft 29' 10"  
Also sugar 18" S 76 1/4 E 29' 6"

Line "B" on north line  
Start at NE stake

560 1/2 ft 7.11

Set stake no witness man.

East line measure 40 25<sup>3</sup>  
west 40 27

Marion's Share track

12 x 13-

Line "A"

Start at stake N&E to  
Track

S 60 3/4 N

855 set stake in road

with: double red oak 36"

S 84 1/2 E 4 1/2 lks

also Ash 14"

N 85 1/2 E 6 8 1/2 lks

Line "B" with center of  
pike S 52 N 881 set stake  
in pike to witness near -

Division of James Gowen  
in Inuskeep track -

Line A Start at stake NW  
to Inuskeep track -  
with road S 83° E 37.54'  
set stake -  
with Cottonwood 18" N 167° W  
130 lbs.

Line B. Start at stake  
at end of line "B" "road 13"  
N 95° W 570 1/2 set stake  
33° W with Birch 20" S 11° 15 feet.

Marion Dorr

Line "A" N 50 1/2 E from  
end of line "H" back to 4 -  
4 7 1/2 lbs. set stake on  
east side of lane -

Line "B"  
with east side of lane -  
S 46 1/2 E 7.51 set stake -  
by east lane fence -

Line C. N 56 1/2 E  
2068 set stake on west  
bank of ditch -

20.68  
21.71  
42.39  
2.12

July 3-1894

329  
129  
458  
725  
458  
267

Line "D"  
ran from begi line "C"  
4th track. S 41 N 408  
set stake -  
2.67 from other end -

779  
267  
5.12

Jain's Dower -

July 16 - 1894

Line "A." ran from stone  
to  $\frac{1}{2}$  to Mrs. Johnson land  
producing her east line.

$134\frac{1}{2}$  ft  
at 16.59 set stake  
in Dixon's south line at  
 $550\frac{1}{4}$  ft  $376\frac{1}{2}$  from his  
SE corner

with blue 12"  $541\frac{3}{4}$  ft  $25\frac{1}{2}$  lbs -

$376\frac{1}{2}$   
 $71\frac{1}{2}$   

---

 $4.24$



James Dower

July 16 - 1894

Tract tract -  
Line "A"

ran  $533\frac{3}{4}$  E  $531 + 115' = 6.46$   
from end of line "J", "Tract 13"

with width 6" on east side of  
road  $164\frac{1}{2}$  E  $23\frac{1}{2}$  W E

Line  $165\frac{1}{2}$  E

came out  $2\frac{1}{2}$ ' north of corner  
to Susan B. Stokes end of  
line "E" "Tract 13"

at 27.82

- George -

Tract No. 11 - George B -  
73 acres west side tract 12 - " " -

Down -

50 acres central part tract 13 -

---

- Zelford -

Tract 8 - 16 - and Tract 7 -  
except 28 acres off of the  
east side -

Down

North 105 acres tract 13 -

---

Maria C -

Tract No. 6 - and 28 acres  
off of the east side of Tract  
11, 12 - 15 - and 28 acres  
off of the east side of tract 7.

Down

Tract 14 -

Bessie -

Remainder of Tract 4 after  
deducting Maria's down -

Tract 1 & 2 -

Tract 13 & 10 - west of road -  
South end. tract 13 - 9 -

Down

Maria's Tract 3 & 4 -

---

Maria's Down

Tract 3 & North part tract  
4 -

---

James Down

Tract 14 -

North 185 acres Tract 13 -