

Chas. J. Cooper Survey Lane Tp  
Logan Co. & Allen Tp. Union Co.

Earl Shipely Bellefontaine } ch  
Frank Arthur Middlebury }

Chas Cooper. Flag.

Corn. at stone west side of Col. &  
Zanesfield pike S E & W. S. Huffman.

Found stone near old brick house East  
of pike.

Chained N 24 $\frac{1}{2}$ ° W 9.49 ch to + pike &  
Newton Road.

Thence with @ Newton Road.  
N 89 $\frac{1}{2}$ ° E 23.38 ch, N 68 $\frac{1}{2}$ ° E 5.65 chs  
an N 81 $\frac{1}{2}$ ° E 11.46 chs to r. w. Huber land.

Thence S. 32 $\frac{1}{2}$ ° E, 15.68 chs with Huber West  
line & East line Survey 3165 to stone

Thence with fence S. 56° W 21.20 chs  
Crossing East bank Darby Ck at 17.8 ch

Thence with <sup>old</sup> fence S 41 $\frac{1}{2}$ ° E 16.5 chs  
to & post

Thence S. 56 $\frac{1}{2}$ ° W with old fence  
22.65 chs to @ Col. & Zanesfield pike

Thence with @ pike S. 37 $\frac{1}{2}$ ° E, 2.81 chs  
to & Elisha Conville.

Thence S. 58 $\frac{1}{2}$ ° W, 20.72 chs to post near  
a cement Anchor post & Snuffin 1/2 pike

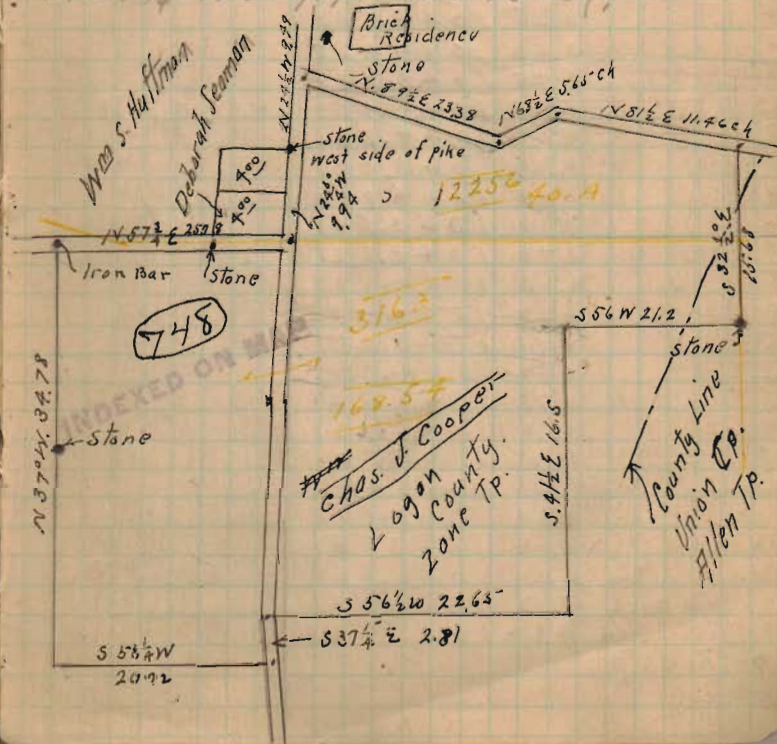
Survey 12256 & 3163

3/13/13

Thence with Snuffin's East line  
N 37° W 34.78 ch. to iron bar @  
West Liberty pike, passing a stone  
on line at about half way.

Thence with @ W. Liberty pike  
N 57 $\frac{1}{2}$ ° E 25.78 chs to + W. L. &  
Col. & Zanesfield pike, passing a  
stone on line at s. r. & Deborah  
Seaman & Angus but 17.65 $\frac{1}{2}$  chs.

Thence with @ Col. & Zanesfield pike  
N 24 $\frac{1}{2}$ ° W. 9.94 chs to bog.





# Lee Surveying and Mapping Co., Inc.



Farm Surveys • Lot Surveys • Topography • Subdivisions • Construction Layout

117 NORTH MADRIVER STREET  
BELLEFONTAINE, OHIO 43311

(937) 593-7335  
FAX (937) 593-7444

## LININGER 92.257 ACRES

Lying in Virginia Military Surveys 3163 and 12256, Allen Township, Union County, and Zane Township, Logan County.

Being out of the H. Cleon Lininger, Geraldine L. Lininger, Douglas A. Lininger, and Paul H. Lininger original 65.42 acre and original 120.57 acre tracts as deeded and described in Parcel 1, Tracts I and II of Volume 373, Page 614 of the Logan County Records of Deeds and Volume 274, Page 648 of the Union County Records of Deeds and being more particularly described as follows:

Beginning at a 1 inch iron pipe found on the center-line of Logan County Highway 153 at the southeast corner of Virginia Military Survey 12256.

THENCE, with the center-line of County Highway 153 (60 feet wide), S 81°-06'-55" W, a distance of 189.42 feet to a MAG nail set at the TRUE POINT OF BEGINNING.

THENCE, with the west lines of the Ohio Ready Mix 3.290 acre tract (Logan County O.R. 139, Pg. 888), the Charlotte A McCreary, Trustee original 145.0 acre tract (Union County Vol. 333, Pg. 674, Tr. I), and the James E. Nye and Mary K. Nye original 30.20 acre tract (Union County Vol. 223, Pg. 137), S 32°-33'-41" E, a distance of 3719.63 feet to a 5/8 inch iron rod set, passing a 5/8 inch iron rod set on the right-of-way of County Highway 153 at 32.75 feet, a 5/8 inch iron rod set on the northeast corner of Virginia Military Survey 3163 at 76.70 feet, and passing into Union County at 702.61 feet.

THENCE, with the northerly line of the R. Michael Funderburgh and Sandra E. Funderburgh original 150.0 acre tract (Union County Vol. 303, Pg. 19), S 56°-09'-39" W, a distance of 1003.41 feet to a point in the center of Big Darby Creek referenced by a 5/8 inch iron rod set S 56°-09'-39" W, a distance of 35.00 feet.

THENCE, with the center-line of the Big Darby Creek the following seventeen courses:

N 13°-50'-24" W, a distance of 116.05 feet to a point referenced by a 5/8 inch iron rod set S 77°-26'-58" W, a distance of 30.00 feet.

N 27°-17'-14" W, a distance of 215.62 feet to a point referenced by a 5/8 inch iron rod set S 63°-16'-01" W, a distance of 27.00 feet.

N 14°-25'-55" W, a distance of 49.94 feet to a point referenced by a 5/8 inch iron rod set S 71°-46'-54" W, a distance of 30.00 feet.

N 4°-29'-53" E, a distance of 129.62 feet to a point referenced by a 5/8 inch iron rod set N 88°-30'-30" W, a distance of 35.00 feet.

N 16°-55'-11" E, a distance of 304.01 feet to a point referenced by a 5/8 inch iron rod set N 70°-39'-51" W, a distance of 20.50 feet.

N 4°-50'-37" W, a distance of 203.78 feet to a point referenced by a 5/8 inch iron rod set S 76°-46'-09" W, a distance of 47.00 feet.

N 49°-42'-52" W, a distance of 151.90 feet to a point referenced by a 5/8 inch iron rod set S 39°-15'-39" W, a distance of 40.00 feet.

N 88°-38'-51" W, a distance of 194.99 feet to a point referenced by a 5/8 inch iron rod set S 2°-52'-56" W, a distance of 27.00 feet.

INDEXED ON MAP  
74B 1D-1

N 60°-54'-59" W, a distance of 103.42 feet to a point reference by a 5/8 inch iron rod set  
S 22°-38'-55" W, a distance of 37.00 feet.

N 47°-05'-47" W, a distance of 186.05 feet to a point reference by a 5/8 inch iron rod set  
S 43°-41'-03" W, a distance of 32.00 feet.

N 56°-07'-27" W, a distance of 132.73 feet to a point reference by a 5/8 inch iron rod set  
S 27°-43'-10" W, a distance of 45.00 feet.

N 78°-42'-22" W, a distance of 167.22 feet to a point reference by a 5/8 inch iron rod set  
S 25°-34'-25" W, a distance of 32.00 feet.

N 54°-44'-54" W, a distance of 191.02 feet to a point reference by a 5/8 inch iron rod set  
S 34°-49'-36" W, a distance of 33.00 feet.

N 34°-30'-25" W, a distance of 117.92 feet to a point reference by a 5/8 inch iron rod set  
S 53°-12'-58" W, a distance of 36.00 feet.

N 23°-45'-50" W, a distance of 228.23 feet to a point reference by a 5/8 inch iron rod set  
S 63°-49'-17" W, a distance of 45.00 feet.

N 44°-21'-57" W, a distance of 245.69 feet to a point reference by a 5/8 inch iron rod set  
S 34°-25'-40" W, a distance of 38.00 feet.

N 51°-12'-33" W, a distance of 43.00 feet to a point.

THENCE, S 64°-06'-03" W, a distance of 315.80 feet to a 2 inch iron pipe found, passing  
a 5/8 inch iron rod set at 47.50 feet.

THENCE, with the easterly lines of the Ronnie J. Wells and Judith A. Wells original 143.12  
acre tract (Vol. 391, Pg. 386) and the Byron L. McBrayer 8.74 acre tract (O.R. 243, Pg. 275),  
N 18°-31'-18" W, a distance of 1717.00 feet to a PK nail found, passing a 5/8 inch iron rod set  
at 1686.96 feet.

THENCE, with the center-line of County Highway 153 the following two courses:

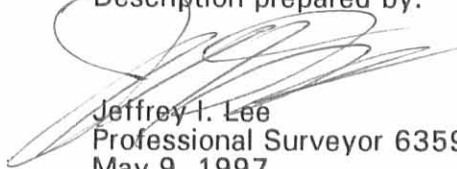
N 68°-37'-45" E, a distance of 266.21 feet to a 1 inch iron pipe found.

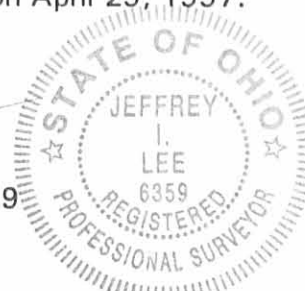
N 81°-06'-55" E, a distance of 812.21 feet to the point of beginning.

Containing 92.257 acres of which 0.628 acre is within the highway right-of-way; 46.190  
acres are in Virginia Military Survey 3163 in Union County; 7.311 acres are in Virginia Military  
Survey 12256 and 38.756 acres are in Virginia Military Survey 3163 in Logan County.

The basis for bearings is the center-line of County Highway 153 at the northeast corner of  
the subject property is N 81°-06'-55" E, and all other bearings are from angles and distances  
measured in a field survey by Lee Surveying and Mapping Co., Inc. on April 29, 1997.

Description prepared by:

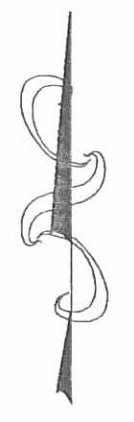
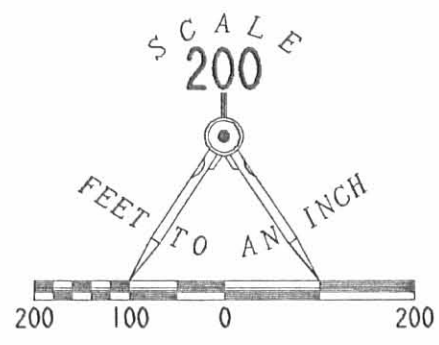
  
Jeffrey I. Lee  
Professional Surveyor 6359  
May 9, 1997



L 2522

INDEXED ON MAP  
748 1D-2

ORIGINAL STAMP IN GREEN



VIRGINIA MILITARY SURVEY 4606  
VIRGINIA MILITARY SURVEY 12256

VIRGINIA MILITARY SURVEY 4606  
COUNTY HIGHWAY 168 (60') STOKES ROAD  
VIRGINIA MILITARY SURVEY 4880

SURVEY OF 92.257 ACRES OUT OF THE  
H. CLEON LININGER,  
GERALDINE L. LININGER,  
DOUGLAS A. LININGER  
AND  
PAUL H. LININGER  
PARCEL I, TRACTS I AND II OF  
VOLUME 373, PAGE 614 (LOGAN COUNTY)  
AND  
VOLUME 274, PAGE 648 (UNION COUNTY)  
VIRGINIA MILITARY SURVEYS 3163 AND 12256  
ZANE TOWNSHIP, LOGAN COUNTY  
AND  
ALLEN TOWNSHIP, UNION COUNTY

92.257 ACRES  
OF WHICH 0.628 ACRE  
IS WITHIN THE HIGHWAY  
RIGHT-OF-WAY

BYRON L. McBRAYER & SUSAN D. McBRAYER  
8.74 AC.  
O. R. 243, PG. 275

VIRGINIA MILITARY SURVEY 12256  
VIRGINIA MILITARY SURVEY 3163

RONNIE J. WELLS & JUDITH A. WELLS  
ORIG. 143.12 AC.  
VOL. 391, PG. 386

H. CLEON LININGER, ETAL  
ORIG. 65.42 AC.

H. CLEON LININGER, ETAL  
ORIG. 120.57 AC.

CHARLOTTE A. McCREARY, TRUSTEE  
ORIG. 145 AC.  
VOL. 333, PG. 674, TR. I  
(UNION CO. REF.)

JAMES E. NYE & MARY K. NYE  
ORIG. 30.20 AC.  
VOL. 223, PG. 137  
(UNION CO. REF.)

JAMES R. CRAIG & PATRICIA E. CRAIG  
1.01 AC.  
VOL. 386, PG. 489

GREGORY A. CRINER & CHRISTIANE M. CRINER  
1.540 AC.  
O. R. 193, PG. 29

CHARLES P. MALLY  
1.625 AC.  
O. R. 227, PG. 547

COLUMBUS NEWELL  
2.00 AC.  
O. R. 169, PG. 249

JOHANNES J. von LOTTUM & DIRKJE von LOTTUM  
3.00 AC.  
O. R. 206, PG. 79

R. MICHAEL FUNDERBURGH & SANDRA E. FUNDERBURGH  
ORIG. 150 AC.  
VOL. 303, PG. 19  
(UNION CO. REF.)

LEGEND

- 5/8 IRON ROD SET
- ⊙ MAG NAIL SET
- ⊗ RAILROAD SPIKE FOUND
- 5/8 IRON ROD FOUND
- 1" IRON PIPE FOUND
- ⊙ 2" IRON PIPE FOUND
- ⊗ PK NAIL FOUND
- ⊕ 3/4" SQ. IRON BAR FOUND
- ⊞ WOOD POST FOUND

2 WORKING DAYS  
**BEFORE YOU DIG**  
CALL TOLL FREE 800-362-2764  
OHIO UTILITIES PROTECTION SERVICE.



SURVEYED BY:  
*Jeffrey T. Lee*  
JEFFREY T. LEE  
PROFESSIONAL SURVEYOR 6359  
APRIL 29, 1997

COPYRIGHT 1997 BY:  
LEE SURVEYING & MAPPING CO., INC.  
117 North Madriver Street  
BELLEFONTAINE, OHIO 43311  
(937) 593-7335

D312 LLLFARMS L-2522-1

INDEXED ON MAP  
746 1P

REC'D 8-28-98 SMJ OKV



# Lee Surveying and Mapping Co., Inc.



Land Surveys • Topography • Subdivisions • Construction Layout

117 N. Madriver Street  
Bellefontaine OH 43311

Phone: (937) 593-7335  
Fax: (937) 593-7444

## LININGER TRACT A 9.205 ACRES

Lying in Virginia Military Surveys 3163 and 12256, Zane Township, Logan County, Ohio

Being out of the H. Cleon Lininger, Geraldine L. Lininger, Douglas A. Lininger, and Paul H. Lininger original 65.42 acre tract deeded and described in Parcel 1, Tract I of Volume 373, Page 614 of the Logan County Records of Deeds and Volume 274, Page 648 of the Union County Records of Deeds and being more particularly described as follows:

Beginning at a 1 inch iron pipe found on the center-line of Logan County Highway 153 at the southeast corner of Virginia Military Survey 12256.

THENCE, with the center-line of County Highway 153 (60 feet wide), S 81°-06'-55" W, a distance of 800.87 feet to a MAG nail set at the TRUE POINT OF BEGINNING.

THENCE, S 32°-33'-41" E, a distance of 650.00 feet to a 5/8 inch iron rod set, passing a 5/8 inch iron rod set at 32.75 feet.

THENCE, S 57°-26'-19" W, a distance of 640.61 feet to a 5/8 inch iron rod set on the east line of the Ronnie J. Wells original 143.12 acre tract, (Vol. 391, Pg. 386).

THENCE, with the east line of the said 143.12 acre tract, N 18°31'-18" W, a distance of 806.36 feet to a P.K. nail found on the center-line of County Highway 153, passing a 5/8 inch iron rod set at 776.32 feet.

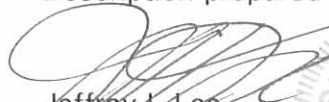
THENCE, with the center-line of County Highway 153, N 68°-37'-45" E, a distance of 266.21 feet to a 1 inch iron pipe found.

THENCE, continuing with the center-line of County Highway 153, N 81°-06'-55" E, a distance of 200.76 feet to the point of beginning.

Containing 9.205 acres of which 0.324 acre is within the highway right-of-way, 4.733 acres are in Virginia Military Survey 12256 and 4.472 acre are in Virginia Military Survey 3163.

The basis for bearings is the center-line of County Highway 153 west of the south line of Virginia Military Survey 12256, being N 81°-06'-55" E, and all other bearings are from angles and distance measured in a field survey by Lee Surveying and Mapping Co., Inc. on July 22, 1998.

Description prepared by:

  
Jeffrey I. Lee  
Professional Surveyor 6359  
July 23, 1998



L-2522

ORIGINAL STAMP IN GREEN

INDEXED ON MAP  
748 2D-1

REC'D 8-28-98 SMJ OK ✓



# Lee Surveying and Mapping Co., Inc.



Land Surveys • Topography • Subdivisions • Construction Layout

117 N. Madriver Street  
Bellefontaine OH 43311

Phone: (937) 593-7335  
Fax: (937) 593-7444

## LININGER TRACT B 6.384 ACRES

Lying in Virginia Military Surveys 3163 and 12256, Zane Township, Logan County, Ohio

Being out of the H. Cleon Lininger, Geraldine L. Lininger, Douglas A. Lininger, and Paul H. Lininger original 65.42 acre tract as deeded and described in Parcel 1, Tract I of Volume 373, Page 614 of the Logan County Records of Deeds and Volume 274, Page 648 of the Union County Records of Deeds and being more particularly described as follows:

Beginning at a 1 inch iron pipe found on the center-line of Logan County Highway 153 at the southeast corner of Virginia Military Survey 12256.

THENCE, with the center-line of County Highway 153 (60 feet wide), S 81°-06'-55" W, a distance of 713.52 feet to a MAG nail set at the TRUE POINT OF BEGINNING.

THENCE, S 32°-33'-41" E, a distance of 915.00 feet to a 5/8 inch iron rod set, passing a 5/8 inch iron rod set at 32.75 feet.

THENCE, S 57°-26'-19" W, a distance of 795.65 feet to a 5/8 inch iron rod set on the east line of the Ronnie J. Wells original 143.12 acre tract, (Vol. 391, Pg. 386).

THENCE, with the east line of the said 143.12 acre tract, N 18°-31'-18" W, a distance of 309.32 feet to a 5/8 inch iron rod set.

THENCE N 57°-26'-19" E, a distance of 640.61 feet to a 5/8 inch iron rod set.

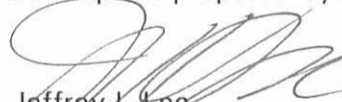
THENCE, N 32°-33'-41" W, a distance of 650.00 feet to a MAG nail set on the center-line of County Highway 153, passing a 5/8 inch iron rod set at 617.25 feet.

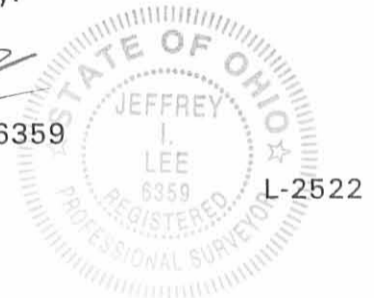
THENCE, with the center-line of County Highway 153, N 81°-06'-55" E, a distance of 87.35 feet to the point of beginning.

Containing 6.384 acres of which 0.060 acre is within the highway right-of-way, 0.563 acre is in Virginia Military Survey 12256 and 5.821 acres are in Virginia Military Survey 3163.

The basis for bearings is the center-line of County Highway 153 west of the south line of Virginia Military Survey 12256, being N 81°-06'-55" E, and all other bearings are from angles and distance measured in a field survey by Lee Surveying and Mapping Co., Inc. on July 22, 1998.

Description prepared by:

  
Jeffrey I. Lee  
Professional Surveyor 6359  
July 23, 1998



ORIGINAL STAMP IN GREEN

INDEXED ON MAP  
748 2D-2

REC'D 6-28-98 SMY OK



# Lee Surveying and Mapping Co., Inc.



Land Surveys • Topography • Subdivisions • Construction Layout

117 N. Madriver Street  
Bellefontaine OH 43311

Phone: (937) 593-7335  
Fax: (937) 593-7444

## LININGER TRACT C 8.816 ACRES

Lying in Virginia Military Surveys 3163 and 12256, Zane Township, Logan County, Ohio

Being out of the H. Cleon Lininger, Geraldine L. Lininger, Douglas A. Lininger, and Paul H. Lininger original 65.42 acre tract as deeded and described in Parcel 1, Tract I of Volume 373, Page 614 of the Logan County Records of Deeds and Volume 274, Page 648 of the Union County Records of Deeds and being more particularly described as follows:

Beginning at a 1 inch iron pipe found on the center-line of Logan County Highway 153 at the southeast corner of Virginia Military Survey 12256.

THENCE, with the center-line of County Highway 153 (60 feet wide), S 81°-06'-55" W, a distance of 626.17 feet to a MAG nail set at the TRUE POINT OF BEGINNING.

THENCE, S 32°-33'-41" E, a distance of 1220.00 feet to a 5/8 inch iron rod set, passing a 5/8 inch iron rod set at 32.75 feet.

THENCE, S 57°-26'-19" W, a distance of 960.69 feet to a 5/8 inch iron rod set on the east line of the Ronnie J. Wells original 143.12 acre tract, (Vol. 391, Pg. 386).

THENCE, with the east line of the said 143.12 acre tract, N 18°-31'-18" W, a distance of 350.55 feet to a 5/8 inch iron rod set.

THENCE N 57°-26'-19" E, a distance of 795.65 feet to a 5/8 inch iron rod set.

THENCE, N 32°-33'-41" W, a distance of 915.00 feet to a MAG nail set on the center-line of County Highway 153, passing a 5/8 inch iron rod set at 882.25 feet.

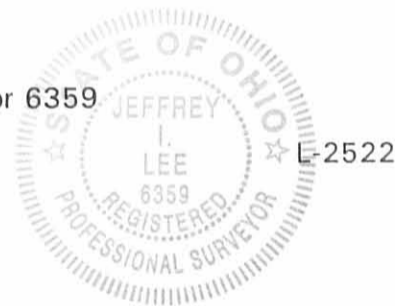
THENCE, with the center-line of County Highway 153, N 81°-06'-55" E, a distance of 87.35 feet to the point of beginning.

Containing 8.816 acres of which 0.060 acre is within the highway right-of-way, 0.498 acre is in Virginia Military Survey 12256 and 8.318 acres are in Virginia Military Survey 3163.

The basis for bearings is the center-line of County Highway 153 west of the south line of Virginia Military Survey 12256, being N 81°-06'-55" E, and all other bearings are from angles and distance measured in a field survey by Lee Surveying and Mapping Co., Inc. on July 22, 1998.

Description prepared by:

Jeffrey I. Lee  
Professional Surveyor 6359  
July 23, 1998



ORIGINAL STAMP IN GREEN

INDEXED ON MAP  
748 20-3

REC'D 8-28-98 SMY CLK ✓



# Lee Surveying and Mapping Co., Inc.



Land Surveys • Topography • Subdivisions • Construction Layout

117 N. Madriver Street  
Bellefontaine OH 43311

Phone: (937) 593-7335  
Fax: (937) 593-7444

## LININGER TRACT D 9.529 ACRES

Lying in Virginia Military Surveys 3163 and 12256, Allen Township, Union County, and Zane Township, Logan County, Ohio

Being out of the H. Cleon Lininger, Geraldine L. Lininger, Douglas A. Lininger, and Paul H. Lininger original 65.42 acre and original 120.57 acre tracts as deeded and described in Parcel 1, Tracts I and II of Volume 373, Page 614 of the Logan County Records of Deeds and Volume 274, Page 648 of the Union County Records of Deeds and being more particularly described as follows:

Beginning at a 1 inch iron pipe found on the center-line of Logan County Highway 153 at the southeast corner of Virginia Military Survey 12256.

THENCE, with the center-line of County Highway 153 (60 feet wide), S 81°-06'-55" W, a distance of 538.82 feet to a MAG nail set at the TRUE POINT OF BEGINNING.

THENCE, S 32°-33'-41" E, a distance of 1525.00 feet to a 5/8 inch iron rod set, passing a 5/8 inch iron rod set at 32.75 feet.

THENCE, S 61°-48'-20" W, a distance of 790.15 feet to a point on the center-line of the Big Darby Creek, passing a 5/8 inch iron rod set at 745.15 feet.

THENCE, S 64°-06'-03" W, a distance of 315.80 feet to a 2 inch iron pipe found on the southeasterly corner of the Ronnie J. Wells original 143.12 acre tract, (Vol. 391, Pg. 386), passing a 5/8 inch iron rod set at 47.50 feet.

THENCE, with the east line of the said 143.12 acre tract, N 18°-31'-18" W, a distance of 250.77 feet to a 5/8 inch iron rod set.

THENCE N 57°-26'-19" E, a distance of 960.69 feet to a 5/8 inch iron rod set.

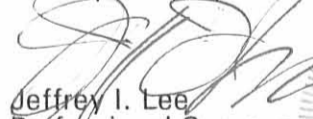
THENCE, N 32°-33'-41" W, a distance of 1220.00 feet to a MAG nail set on the center-line of County Highway 153, passing a 5/8 inch iron rod set at 1187.25 feet.

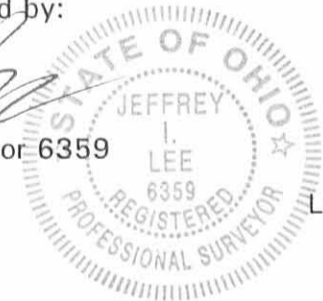
THENCE, with the center-line of County Highway 153, N 81°-06'-55" E, a distance of 87.35 feet to the point of beginning.

Containing 9.529 acres of which 0.060 acre is within the highway right-of-way, 9.036 acres are in Logan County with 0.433 acre in Virginia Military Survey 12256 and 8.603 acre is in Virginia Military Survey 3163, and 0.493 acre is in Virginia Military Survey 3163 in Union County.

The basis for bearings is the center-line of County Highway 153 west of the south line of Virginia Military Survey 12256, being N 81°-06'-55" E, and all other bearings are from angles and distance measured in a field survey by Lee Surveying and Mapping Co., Inc. on July 22, 1998.

Description prepared by:

  
Jeffrey I. Lee  
Professional Surveyor 6359  
July 23, 1998

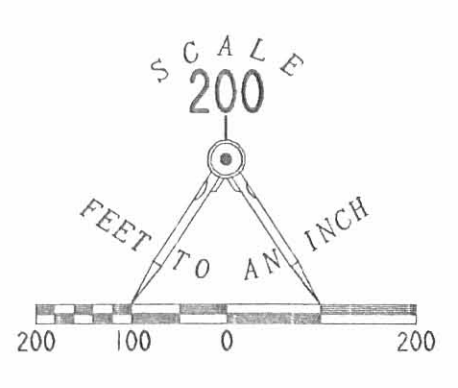
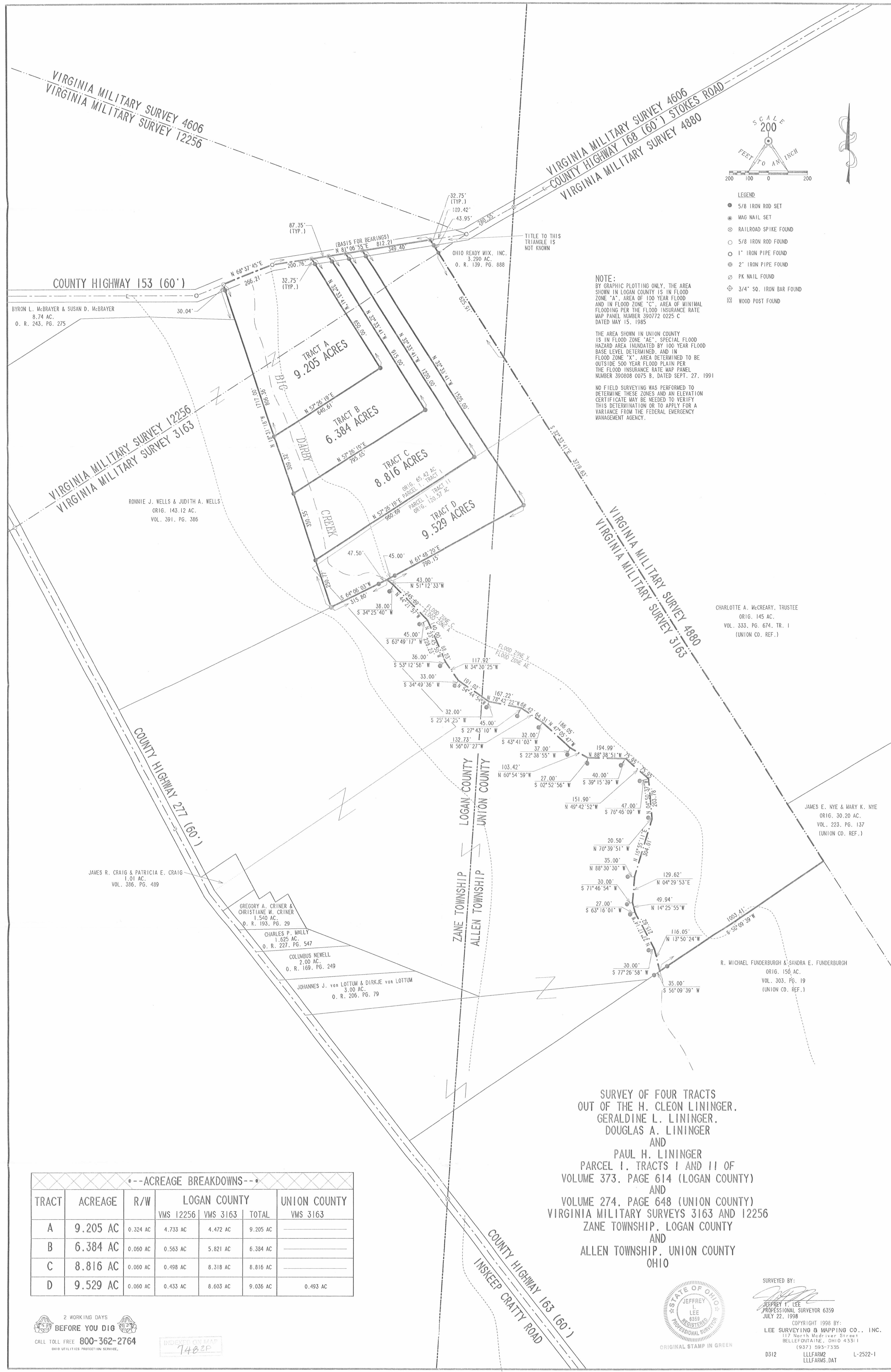


L-2522

ORIGINAL STAMP IN GREEN

INDEXED ON MAP  
748 2D-4





- LEGEND**
- 5/8 IRON ROD SET
  - ⊙ WAG NAIL SET
  - ⊗ RAILROAD SPIKE FOUND
  - 5/8 IRON ROD FOUND
  - 1" IRON PIPE FOUND
  - ⊗ 2" IRON PIPE FOUND
  - ⊗ PK NAIL FOUND
  - ⊗ 3/4" SQ. IRON BAR FOUND
  - ⊗ WOOD POST FOUND

**NOTE:**  
 BY GRAPHIC PLOTTING ONLY, THE AREA SHOWN IN LOGAN COUNTY IS IN FLOOD ZONE "A", AREA OF 100 YEAR FLOOD AND IN FLOOD ZONE "C", AREA OF MINIMAL FLOODING PER THE FLOOD INSURANCE RATE MAP PANEL NUMBER 390772 0225 C DATED MAY 15, 1985

THE AREA SHOWN IN UNION COUNTY IS IN FLOOD ZONE "AE", SPECIAL FLOOD HAZARD AREA INUNDATED BY 100 YEAR FLOOD BASE LEVEL DETERMINED, AND IN FLOOD ZONE "X", AREA DETERMINED TO BE OUTSIDE 500 YEAR FLOOD PLAIN PER THE FLOOD INSURANCE RATE MAP PANEL NUMBER 390808 0075 B, DATED SEPT. 27, 1991

NO FIELD SURVEYING WAS PERFORMED TO DETERMINE THESE ZONES AND AN ELEVATION CERTIFICATE MAY BE NEEDED TO VERIFY THIS DETERMINATION OR TO APPLY FOR A VARIANCE FROM THE FEDERAL EMERGENCY MANAGEMENT AGENCY.

\*--ACREAGE BREAKDOWNS--\*

TRACT	ACREAGE	R/W	LOGAN COUNTY			UNION COUNTY
			VMS 12256	VMS 3163	TOTAL	
A	9.205 AC	0.324 AC	4.733 AC	4.472 AC	9.205 AC	
B	6.384 AC	0.060 AC	0.563 AC	5.821 AC	6.384 AC	
C	8.816 AC	0.060 AC	0.498 AC	8.318 AC	8.816 AC	
D	9.529 AC	0.060 AC	0.433 AC	8.603 AC	9.036 AC	0.493 AC

SURVEY OF FOUR TRACTS  
 OUT OF THE H. CLEON LININGER,  
 GERALDINE L. LININGER,  
 DOUGLAS A. LININGER  
 AND  
 PAUL H. LININGER  
 PARCEL I, TRACTS I AND II OF  
 VOLUME 373, PAGE 614 (LOGAN COUNTY)  
 AND  
 VOLUME 274, PAGE 648 (UNION COUNTY)  
 VIRGINIA MILITARY SURVEYS 3163 AND 12256  
 ZANE TOWNSHIP, LOGAN COUNTY  
 AND  
 ALLEN TOWNSHIP, UNION COUNTY  
 OHIO

2 WORKING DAYS  
**BEFORE YOU DIG**  
 CALL TOLL FREE 800-362-2764  
 OHIO UTILITIES PROTECTION SERVICE.

INDEXED ON MAP  
 7482P

STATE OF OHIO  
 JEFFREY L. LEE  
 REGISTERED PROFESSIONAL SURVEYOR  
 ORIGINAL STAMP IN GREEN

SURVEYED BY:  
 JEFFREY L. LEE  
 PROFESSIONAL SURVEYOR 6359  
 JULY 22, 1998  
 COPYRIGHT 1998 BY:  
 LEE SURVEYING & MAPPING CO., INC.  
 117 North Madriver Street  
 BELLEFONTAINE, OHIO 43311  
 (937) 593-7335  
 D312 LLLFARM2 L-2522-1



# Lee Surveying and Mapping Co., Inc.



Land Surveys • Topography • Subdivisions • Construction Layout

117 N. Madriver Street  
Bellefontaine OH 43311

Phone: (937) 593-7335  
Fax: (937) 593-7444

## LININGER TRACT E 9.616 ACRES

Lying in Virginia Military Surveys 3163 and 12256, Allen Township, Union County, and Zane Township, Logan County, Ohio

Being out of the H. Cleon Lininger, Geraldine L. Lininger, Douglas A. Lininger, and Paul H. Lininger original 65.42 acre and original 120.57 acre tracts as deeded and described in Parcel 1, Tracts I and II of Volume 373, Page 614 of the Logan County Records of Deeds and Volume 274, Page 648 of the Union County Records of Deeds and being more particularly described as follows:

Beginning at a 1 inch iron pipe found on the center-line of Logan County Highway 153 at the southeast corner of Virginia Military Survey 12256.

THENCE, with the center-line of County Highway 153 (60 feet wide), S 81°-06'-55" W, a distance of 451.47 feet to a MAG nail set at the TRUE POINT OF BEGINNING.

THENCE, S 32°-33'-41" E, a distance of 1800.00 feet to a 5/8 inch iron rod set, passing a 5/8 inch iron rod set at 32.75 feet.

THENCE, S 54°-01'-02" W, a distance of 826.73 feet to a point on the center-line of the Big Darby Creek, passing a 5/8 inch iron rod set at 781.73 feet.

THENCE, with the center-line of the said creek, the following three courses:

N 23°-45'-50" W, a distance of 140.00 feet to a point referenced by a 5/8 inch iron rod set S 63°-49'-17" W, a distance of 45.00 feet.

N 44°-21'-57" W, a distance of 245.69 feet to a point referenced by a 5/8 inch iron rod set S 34°-25'-40" W, a distance of 38.00 feet.

N 51°-12'-33" W, a distance of 43.00 feet to a point.

THENCE, N 61°-48'-20" E, a distance of 790.15 feet to a 5/8 inch iron rod set, passing a 5/8 inch iron rod set at 45.00 feet.


THENCE, N 32°-33'-41" W, a distance of 1525.00 feet to a MAG nail set on the center-line of County Highway 153, passing a 5/8 inch iron rod set at 1492.25 feet.

THENCE, with the center-line of County Highway 153, N 81°-06'-55" E, a distance of 87.35 feet to the point of beginning.

Containing 9.616 acres of which 0.060 acre is within the highway right-of-way, 6.174 acres are in Logan County with 0.368 acre in Virginia Military Survey 12256 and 5.806 acres are in Virginia Military Survey 3163, and 3.442 acre is in Virginia Military Survey 3163 in Union County.

The basis for bearings is the center-line of County Highway 153 west of the south line of Virginia Military Survey 12256, being N 81°-06'-55" E, and all other bearings are from angles and distance measured in a field survey by Lee Surveying and Mapping Co., Inc. on July 22, 1998.

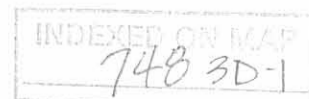
Description prepared by:

  
Jeffrey I. Lee  
Professional Surveyor 6359  
July 23, 1998



ORIGINAL STAMP IN GREEN

L-2522



REC'D 9-1-98 SWM OK ✓



# Lee Surveying and Mapping Co., Inc.



Land Surveys • Topography • Subdivisions • Construction Layout

117 N. Madriver Street  
Bellefontaine OH 43311

Phone: (937) 593-7335  
Fax: (937) 593-7444

## LININGER TRACT F 13.612 ACRES

Lying in Virginia Military Surveys 3163 and 12256, Allen Township, Union County, and Zane Township, Logan County, Ohio

Being out of the H. Cleon Lininger, Geraldine L. Lininger, Douglas A. Lininger, and Paul H. Lininger original 65.42 acre and original 120.57 acre tracts as deeded and described in Parcel 1, Tracts I and II of Volume 373, Page 614 of the Logan County Records of Deeds and Volume 274, Page 648 of the Union County Records of Deeds and being more particularly described as follows:

Beginning at a 1 inch iron pipe found on the center-line of Logan County Highway 153 at the southeast corner of Virginia Military Survey 12256.

THENCE, with the center-line of County Highway 153 (60 feet wide), S 81°-06'-55" W, a distance of 364.12 feet to a MAG nail set at the TRUE POINT OF BEGINNING.

THENCE, S 32°-33'-41" E, a distance of 2225.00 feet to a 5/8 inch iron rod set, passing a 5/8 inch iron rod set at 32.75 feet.

THENCE, S 45°-16'-26" W, a distance of 710.64 feet to a point on the center-line of the Big Darby Creek, passing a 5/8 inch iron rod set at 612.40 feet.

THENCE, with the center-line of said creek, the following five (5) courses:

N 56°-07'-27" W, a distance of 68.42 feet to a point referenced by a 5/8 inch iron set at S 27°-43'-10" W, a distance of 45.00 feet.

N 78°-42'-22" W, a distance of 167.22 feet to a point referenced by a 5/8 inch iron rod set S 25°-34'-25" W, a distance of 32.00 feet.

N 54°-44'-54" W, a distance of 191.02 feet to a point referenced by a 5/8 inch iron rod set S 34°-49'-36" W, a distance of 33.00 feet.

N 34°-30'-25" W, a distance of 117.92 feet to a point, referenced by a 5/8 inch iron rod set S 53°-12'-58" W, a distance of 36.00 feet.

N 23°-45'-50" W, a distance of 88.23 feet to a point.

THENCE, N 54°-01'-02" E, a distance of 826.73 feet to a 5/8 inch iron rod set, passing a 5/8 inch iron rod set at 45.00 feet.

THENCE, N 32°-33'-41" W, a distance of 1800.00 feet to a MAG nail set on the center-line of County Highway 153, passing a 5/8 inch iron rod set at 1767.25 feet.

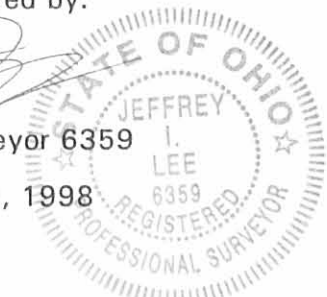
THENCE, with the center-line of County Highway 153, N 81°-06'-55" E, a distance of 87.35 feet to the point of beginning.

Containing 13.612 acres of which 0.060 acre is within the highway right-of-way, 3.344 acres are in Logan County with 0.303 acre in Virginia Military Survey 12256 and 3.041 acres are in Virginia Military Survey 3163, and 10.268 acres are in Virginia Military Survey 3163 in Union County.

The basis for bearings is the center-line of County Highway 153 west of the south line of Virginia Military Survey 12256, being N 81°-06'-55" E, and all other bearings are from angles and distance measured in a field survey by Lee Surveying and Mapping Co., Inc. on July 22, 1998.

Description prepared by:

Jeffrey I. Lee  
Professional Surveyor 6359  
July 23, 1998  
Rev. September 1, 1998



L-2522

ORIGINAL STAMP IN GREEN

INDEXED ON MAP  
748 3D-2

REC'D 9-1-98 SMY OK



# Lee Surveying and Mapping Co., Inc.



Land Surveys • Topography • Subdivisions • Construction Layout

117 N. Madriver Street  
Bellefontaine OH 43311

Phone: (937) 593-7335  
Fax: (937) 593-7444

## LININGER TRACT G 12.655 ACRES

Lying in Virginia Military Surveys 3163 and 12256, Allen Township, Union County, and Zane Township, Logan County, Ohio

Being out of the H. Cleon Lininger, Geraldine L. Lininger, Douglas A. Lininger, and Paul H. Lininger original 65.42 acre and original 120.57 acre tracts as deeded and described in Parcel 1, Tracts I and II of Volume 373, Page 614 of the Logan County Records of Deeds and Volume 274, Page 648 of the Union County Records of Deeds and being more particularly described as follows:

Beginning at a 1 inch iron pipe found on the center-line of Logan County Highway 153 at the southeast corner of Virginia Military Survey 12256.

THENCE, with the center-line of County Highway 153 (60 feet wide), S 81°-06'-55" W, a distance of 276.77 feet to a MAG nail set at the TRUE POINT OF BEGINNING.

THENCE, S 32°-33'-41" E, a distance of 2750.00 feet to a 5/8 inch iron rod set, passing a 5/8 inch iron rod set at 32.75 feet.

THENCE, S 45°-16'-26" W, a distance of 479.72 feet to a point on the center-line of the Big Darby Creek, passing a 5/8 inch iron rod set at 434.72 feet.

THENCE, with the center-line of Big Darby Creek, the following five (5) courses:

N 49°-42'-52" W, a distance of 75.95 feet to a point referenced by a 5/8 inch iron rod set S 39°-15'-39" W, a distance of 40.00 feet.

N 88°-38'-51" W, a distance of 194.99 feet to a point referenced by a 5/8 inch iron rod set S 2°-52'-56" W, a distance of 27.00 feet.

N 60°-54'-59" W, a distance of 103.42 feet to a point referenced by a 5/8 inch iron rod set S 22°-38'-55" W, a distance of 37.00 feet.

N 47°-05'-47" W, a distance of 186.05 feet to a point referenced by a 5/8 inch iron rod set S 43°-41'-03" W, a distance of 32.00 feet.

N 56°-07'-27" W, a distance of 64.31 feet to a point.

THENCE, N 45°-16'-26" E, a distance of 710.64 feet to a 5/8 inch iron rod set, passing a 5/8 inch iron rod set at 98.24 feet.

THENCE, N 32°-33'-41" W, a distance of 2225.00 feet to a MAG nail set on the center-line of County Highway 153, passing a 5/8 inch iron rod set at 2192.25 feet.

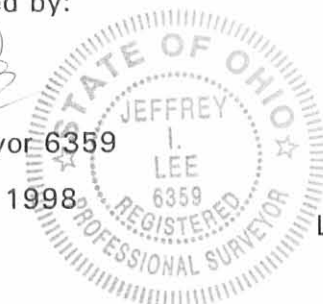
THENCE, with the center-line of County Highway 153, N 81°-06'-55" E, a distance of 87.35 feet to the point of beginning.

Containing 12.655 acres of which 0.060 acre is within the highway right-of-way, 1.686 acres are in Logan County with 0.238 acre in Virginia Military Survey 12256 and 1.448 acres are Virginia Military Survey 3163, and 10.969 acres are in Virginia Military Survey 3163 in Union County.

The basis for bearings is the center-line of County Highway 153 west of the south line of Virginia Military Survey 12256, being N 81°-06'-55" E, and all other bearings are from angles and distance measured in a field survey by Lee Surveying and Mapping Co., Inc. on July 22, 1998.

Description prepared by:

Jeffrey I. Lee  
Professional Surveyor 6359  
July 23, 1998  
Rev. September 1, 1998



L-2522

ORIGINAL STAMP IN GREEN

INDEXED ON MAP  
740 3D-3

REC'D 8-28-98 SWY ALL ✓



# Lee Surveying and Mapping Co., Inc.



Land Surveys • Topography • Subdivisions • Construction Layout

117 N. Madriver Street  
Bellefontaine OH 43311

Phone: (937) 593-7335  
Fax: (937) 593-7444

## LININGER TRACT H 22.440 ACRES

Lying in Virginia Military Surveys 3163 and 12256, Allen Township, Union County, and Zane Township, Logan County, Ohio

Being out of the H. Cleon Lininger, Geraldine L. Lininger, Douglas A. Lininger, and Paul H. Lininger original 65.42 acre and original 120.57 acre tracts as deeded and described in Parcel 1, Tracts I and II of Volume 373, Page 614 of the Logan County Records of Deeds and Volume 274, Page 648 of the Union County Records of Deeds and being more particularly described as follows:

Beginning at a 1 inch iron pipe found on the center-line of Logan County Highway 153 at the southeast corner of Virginia Military Survey 12256.

THENCE, with the center-line of County Highway 153 (60 feet wide), S 81°-06'-55" W, a distance of 189.42 feet to a MAG nail set at the TRUE POINT OF BEGINNING.

THENCE, with the west line of Virginia Military Survey 4880, the west lines of the Ohio Ready Mix 3.290 acre tract (Logan County O.R. 139, Pg. 888), the Charlotte A McCreary, Trustee original 145.0 acre tract (Union County Vol. 333, Pg. 674, Tr. I), and the James E. Nye and Mary K. Nye original 30.20 acre tract (Union County Vol. 223, Pg. 137), S 32°-33'-41" E, a distance of 3719.63 feet to a 5/8 inch iron rod set, passing a 5/8 inch iron rod set on the right-of-way of County Highway 153 at 32.75 feet, a 5/8 inch iron rod set on the northeast corner of Virginia Military Survey 3163 at 76.70 feet, and passing into Union County at 702.61 feet.

THENCE, with the northerly line of the R. Michael Funderburgh and Sandra E. Funderburgh original 150.0 acre tract (Union County Vol. 303, Pg. 19), S 56°-09'-39" W, a distance of 1003.41 feet to a point in the center of Big Darby Creek referenced by a 5/8 inch iron rod set S 56°-09'-39" W, a distance of 35.00 feet, passing a 5/8 inch iron rod set at 958.41 feet.

THENCE, with the center-line of the Big Darby Creek the following seven courses:

N 13°-50'-24" W, a distance of 116.05 feet to a point referenced by a 5/8 inch iron rod set S 77°-26'-58" W, a distance of 30.00 feet.

N 27°-17'-14" W, a distance of 215.62 feet to a point referenced by a 5/8 inch iron rod set S 63°-16'-01" W, a distance of 27.00 feet.

N 14°-25'-55" W, a distance of 49.94 feet to a point referenced by a 5/8 inch iron rod set S 71°-46'-54" W, a distance of 30.00 feet.

N 4°-29'-53" E, a distance of 129.62 feet to a point referenced by a 5/8 inch iron rod set N 88°-30'-30" W, a distance of 35.00 feet.

N 16°-55'-11" E, a distance of 304.01 feet to a point referenced by a 5/8 inch iron rod set N 70°-39'-51" W, a distance of 20.50 feet.

N 4°-50'-37" W, a distance of 203.78 feet to a point referenced by a 5/8 inch iron rod set S 76°-46'-09" W, a distance of 47.00 feet.

N 49°-42'-52" W, a distance of 75.950 feet to a point.

THENCE, N 45°-16'-26" E, a distance of 479.72 feet to a 5/8 inch iron rod set, passing a 5/8 inch iron rod set at 45.00 feet.

THENCE, N 32°-33'-41" W, a distance of 2750.00 feet to a MAG nail set on the center-line of County Highway 153, passing a 5/8 inch iron rod set at 2717.25 feet.

THENCE, with the center-line of County Highway 153, N 81°-06'-55" E, a distance of 87.35 feet to the point of beginning.

Containing 22.440 acres of which 0.060 acre is within the highway right-of-way, 1.422 acres are in Logan County with 0.173 acre in Virginia Military Survey 12256 and 1.249 acres are in Virginia Military Survey 3163, and 21.018 acres are in Virginia Military Survey 3163 in Union County.

The basis for bearings is the center-line of County Highway 153 west of the south line of Virginia Military Survey 12256, being N 81°-06'-55" E, and all other bearings are from angles and distance measured in a field survey by Lee Surveying and Mapping Co., Inc. on July 22, 1998.



ORIGINAL STAMP IN GREEN

Description prepared by:

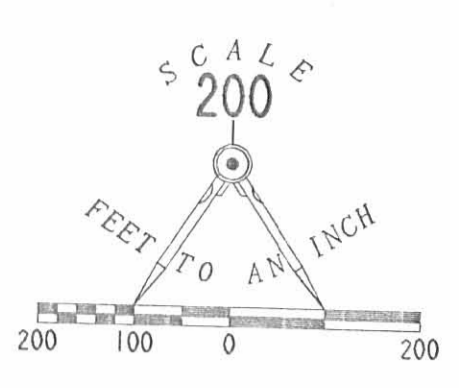
Jeffrey I. Lee  
Professional Surveyor 6359  
July 23, 1998

INDEXED ON MAP  
748 3D-4

L-2522

VIRGINIA MILITARY SURVEY 4606  
VIRGINIA MILITARY SURVEY 12256

VIRGINIA MILITARY SURVEY 4606  
COUNTY HIGHWAY 168 (60') STOKES ROAD  
VIRGINIA MILITARY SURVEY 4880

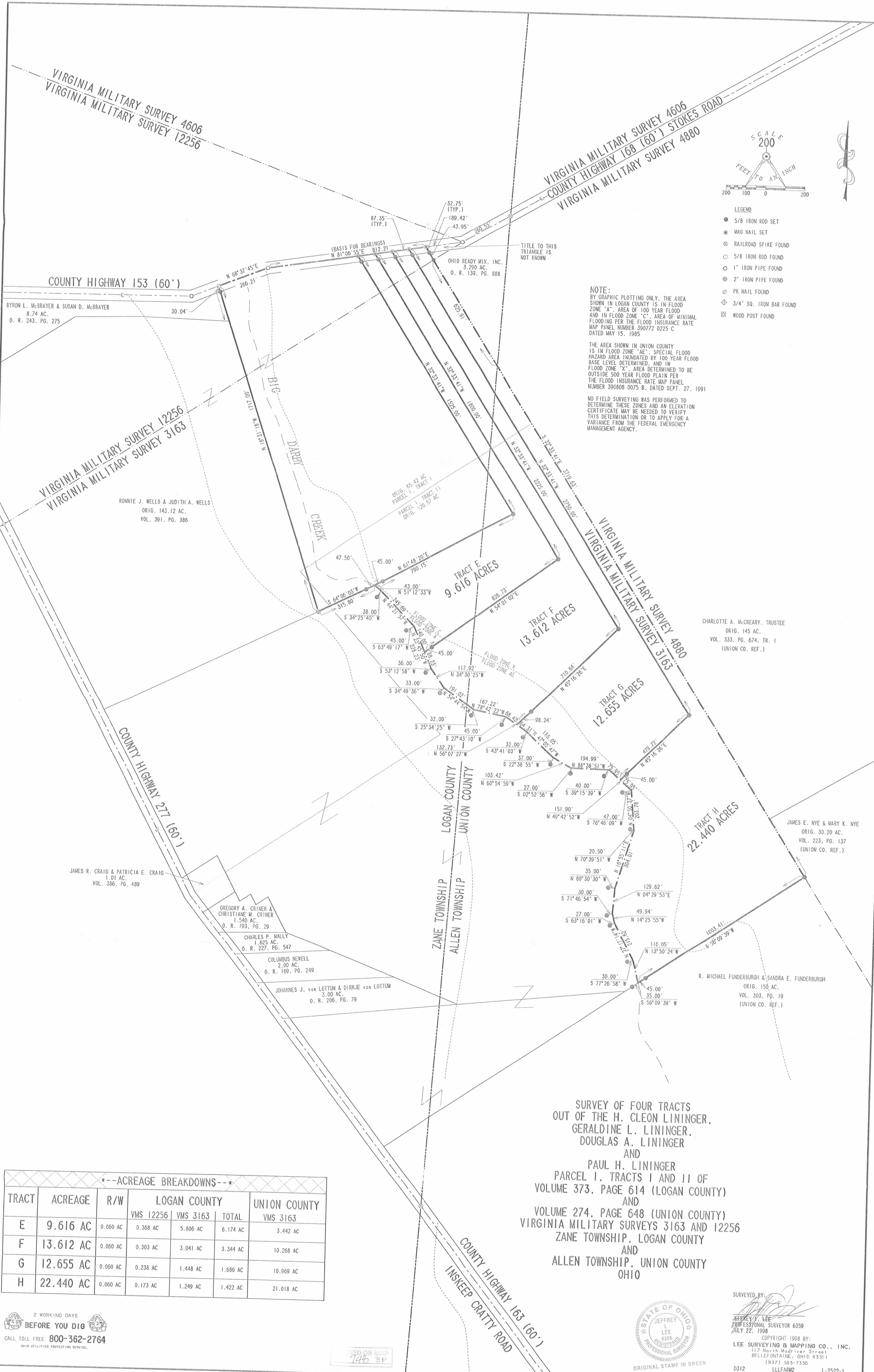


- LEGEND
- 5/8 IRON ROD SET
  - ⊙ MAG NAIL SET
  - ⊕ RAILROAD SPIKE FOUND
  - 5/8 IRON ROD FOUND
  - 1" IRON PIPE FOUND
  - ⊕ 2" IRON PIPE FOUND
  - ⊕ PK NAIL FOUND
  - ⊕ 3/4" SQ. IRON BAR FOUND
  - ⊕ WOOD POST FOUND

NOTE:  
BY GRAPHIC PLOTTING ONLY, THE AREA SHOWN IN LOGAN COUNTY IS IN FLOOD ZONE "A", AREA OF 100 YEAR FLOOD AND IN FLOOD ZONE "C", AREA OF MINIMAL FLOODING PER THE FLOOD INSURANCE RATE MAP PANEL NUMBER 390772 0225 C DATED MAY 15, 1985

THE AREA SHOWN IN UNION COUNTY IS IN FLOOD ZONE "AE", SPECIAL FLOOD HAZARD AREA INUNDATED BY 100 YEAR FLOOD BASE LEVEL DETERMINED, AND IN FLOOD ZONE "X", AREA DETERMINED TO BE OUTSIDE 500 YEAR FLOOD PLAIN PER THE FLOOD INSURANCE RATE MAP PANEL NUMBER 390808 0075 B, DATED SEPT. 27, 1991

NO FIELD SURVEYING WAS PERFORMED TO DETERMINE THESE ZONES AND AN ELEVATION CERTIFICATE MAY BE NEEDED TO VERIFY THIS DETERMINATION OR TO APPLY FOR A VARIANCE FROM THE FEDERAL EMERGENCY MANAGEMENT AGENCY.



JAMES R. CRAIG & PATRICIA E. CRAIG  
1.01 AC.  
VOL. 386, PG. 489

GREGORY A. CRINER & CHRISTIANE M. CRINER  
1.540 AC.  
O. R. 193, PG. 29

CHARLES P. MALLY  
1.625 AC.  
O. R. 227, PG. 547

COLUMBUS NEWELL  
2.00 AC.  
O. R. 169, PG. 249

JOHANNES J. von LOTTUM & DIRKJE von LOTTUM  
3.00 AC.  
O. R. 206, PG. 79

CHARLOTTE A. McCREARY, TRUSTEE  
0.145 AC.  
VOL. 333, PG. 674, TR. 1  
(UNION CO. REF.)

JAMES E. NYE & MARY K. NYE  
0.16 AC.  
VOL. 223, PG. 137  
(UNION CO. REF.)

R. MICHAEL FUNDERBURGH & SANDRA E. FUNDERBURGH  
0.150 AC.  
VOL. 303, PG. 19  
(UNION CO. REF.)

SURVEY OF FOUR TRACTS  
OUT OF THE H. CLEON LININGER,  
GERALDINE L. LININGER,  
DOUGLAS A. LININGER  
AND  
PAUL H. LININGER  
PARCEL I, TRACTS I AND II OF  
VOLUME 373, PAGE 614 (LOGAN COUNTY)  
AND  
VOLUME 274, PAGE 648 (UNION COUNTY)  
VIRGINIA MILITARY SURVEYS 3163 AND 12256  
ZANE TOWNSHIP, LOGAN COUNTY  
AND  
ALLEN TOWNSHIP, UNION COUNTY  
OHIO

---ACREAGE BREAKDOWNS---

TRACT	ACREAGE	R/W	LOGAN COUNTY			UNION COUNTY
			VMS 12256	VMS 3163	TOTAL	VMS 3163
E	9.616 AC	0.060 AC	0.368 AC	5.806 AC	6.174 AC	3.442 AC
F	13.612 AC	0.060 AC	0.303 AC	3.041 AC	3.344 AC	10.268 AC
G	12.655 AC	0.060 AC	0.238 AC	1.448 AC	1.686 AC	10.969 AC
H	22.440 AC	0.060 AC	0.173 AC	1.249 AC	1.422 AC	21.018 AC

2 WORKING DAYS  
BEFORE YOU DIG  
CALL TOLL FREE 800-362-2764  
OHIO UTILITIES PROTECTION SERVICE

SED ON MAP  
7446 3P



SURVEYED BY:  
JEFFREY V. LEE  
PROFESSIONAL SURVEYOR 6359  
JULY 22, 1998  
COPYRIGHT 1998 BY:  
LEE SURVEYING & MAPPING CO., INC.  
117 North Madison Street  
BELLEFONTAINE, OHIO 43311  
(937) 593-7335  
D312 LLLFARM2 LLLFARMS.DAT L-2522-1