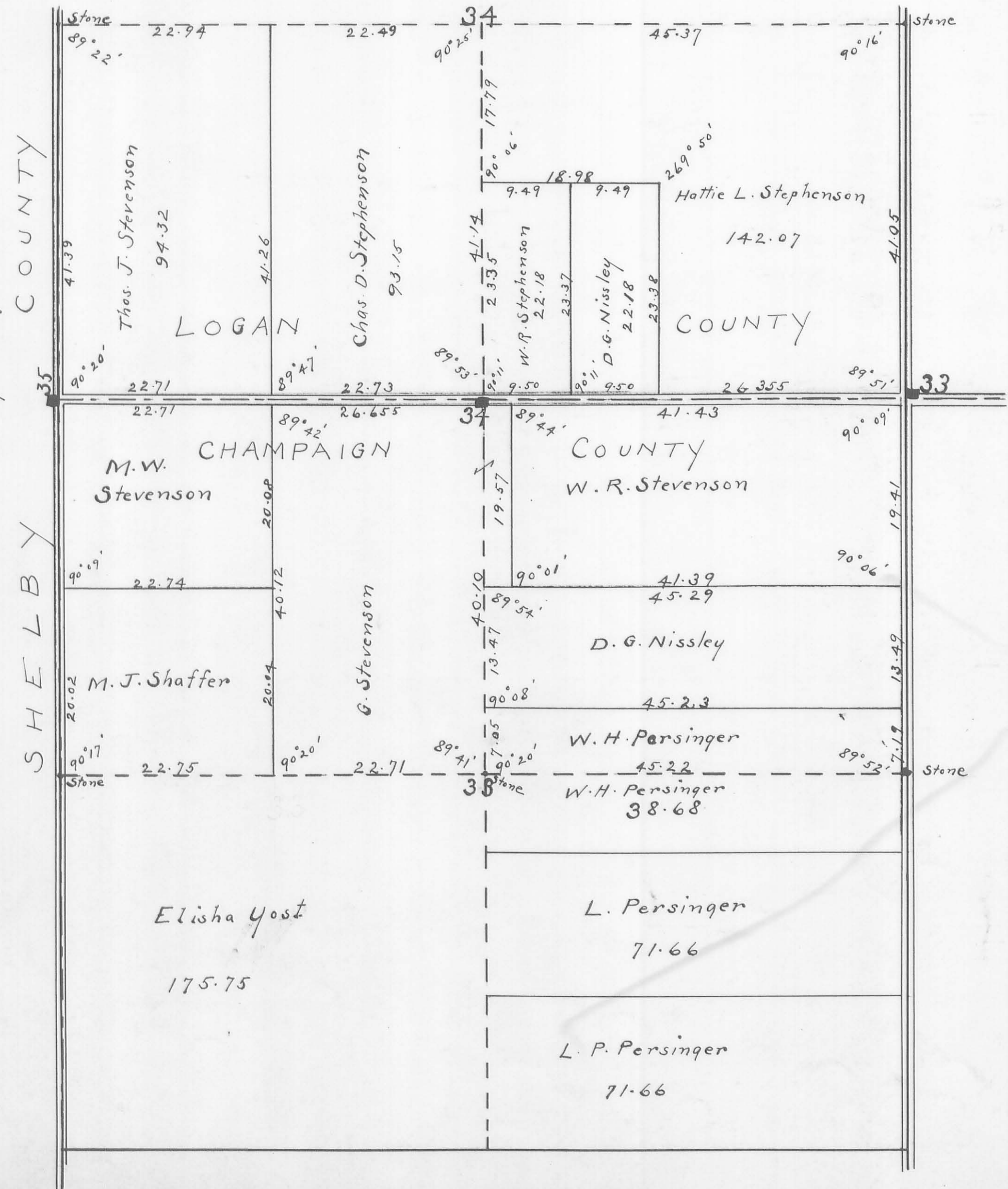


INDEXED ON MAP  
199

T. 3. R. 13.

Monuments:  
No. 33 ~ Stone ~ 20 feet east and 20 feet north of Section Corner.  
No. 34 ~ Stone ~ On 9th Sec. Line and 20 feet South of Co. Line.  
No. 35 ~ Stone ~ 20 feet west on County Line produced.



SHELBY COUNTY

LOGAN COUNTY

COUNTY

CHAMPAIGN COUNTY

COUNTY

Elisha Yost

L. Persinger

L. P. Persinger