

NOTE: NO RECORDS OF EAST/WEST ALLEY VACATIONS FOUND.

RETRACEMENT OF LOT 89
 D. DEANS NORTH ADDITION
 VILLAGE OF WEST MANSFIELD
 BOKESCREEK TWP.
 LOGAN COUNTY, OHIO



INDEXED ON MAP
 872 v 1P

LEE SURVEYING & MAPPING CO.
 143 East Columbus Avenue
 BELLEFONTAINE, OHIO 43311
 (513) 593-7335

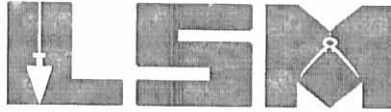
By: *[Signature]*
 JEFFREY I. LEE
 PROF. SURVEYOR #6359
 July 30, 1992

L1665-4A

Lee Surveying and Mapping Co., Inc.

Land Surveys • Topography • Subdivisions • Construction Layout

117 N. Madriver St.
Bellefontaine OH 43311



Phone: (937) 593-7335
Fax: (937) 593-7444

DETRICK 0.454 ACRE

Lying in Virginia Military Survey 775-6155, Bokescreek Township, Village of West Mansfield, Logan County, Ohio.

Being part of Lots 86 and 87 of the Southhard Addition (Plat cabinet A, Slide 187), 16.0 feet wide alley vacated in Ordinance 12-97, O.R. 371, Pg. 421), and the Donald W. Detrick 0.76 acre tract as deeded and described in Official Record 291, Page 932 of the Logan County Records of Deeds and being more particularly described as follows:

Beginning at a 5/8 inch iron rod found on the northwest corner of Lot 86, on the east line of Dean Street, and on the south line of a 16.0 feet wide alley vacated in said ordinance.

THENCE, with the east line of Dean Street, (40 feet wide), N 12°-00'-00" W, a distance of 55.00 feet to a 5/8 inch iron rod set.

THENCE, N 78°-21'-36" E, a distance of 226.64 feet to a 5/8 inch iron rod set.

THENCE, with the west lines of the Walter Eugene Warren, Jr. 0.23 acre tract (O.R. 358, Pg. 294), the Charles Matthew LeVan 0.231 acre tract (O.R. 362, Pg. 960) and the Richard P. Cummings 0.33 acre tract (O.R. 350, Pg. 072), S 11°-50'-53" E, a distance of 110.09 feet to a 5/8 inch iron rod found.

THENCE, with the north lines of the F. Shane Guenther 0.662 acre tract (O.R. 378, Pg. 618), the following two (2) courses:

N 86°-19'-31" W, a distance of 113.93 feet to a 5/8 inch iron rod found on the east line of a 16 feet wide vacated alley.

S 78°-21'-36" W, a distance of 116.65 feet to a 5/8 inch iron rod found.

THENCE, with the east line of Dean Street, N 12°-00'-00" W, a distance of 25.00 feet to the point of beginning.

Containing 0.454 acre of which 0.255 acre is out of the 0.76 acre tract, and 0.199 acre is part of Lot 86 and part of Lot 87.

The basis for bearings is the east line of Dean Street, Being N 12°-00'-00" W, and all other bearings are from angles and distances measured in a field survey by Lee Surveying and Mapping Co., Inc. on January 9, 2003.

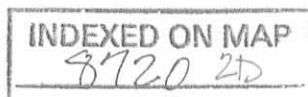
Description prepared by:



ORIGINAL STAMP IN GREEN

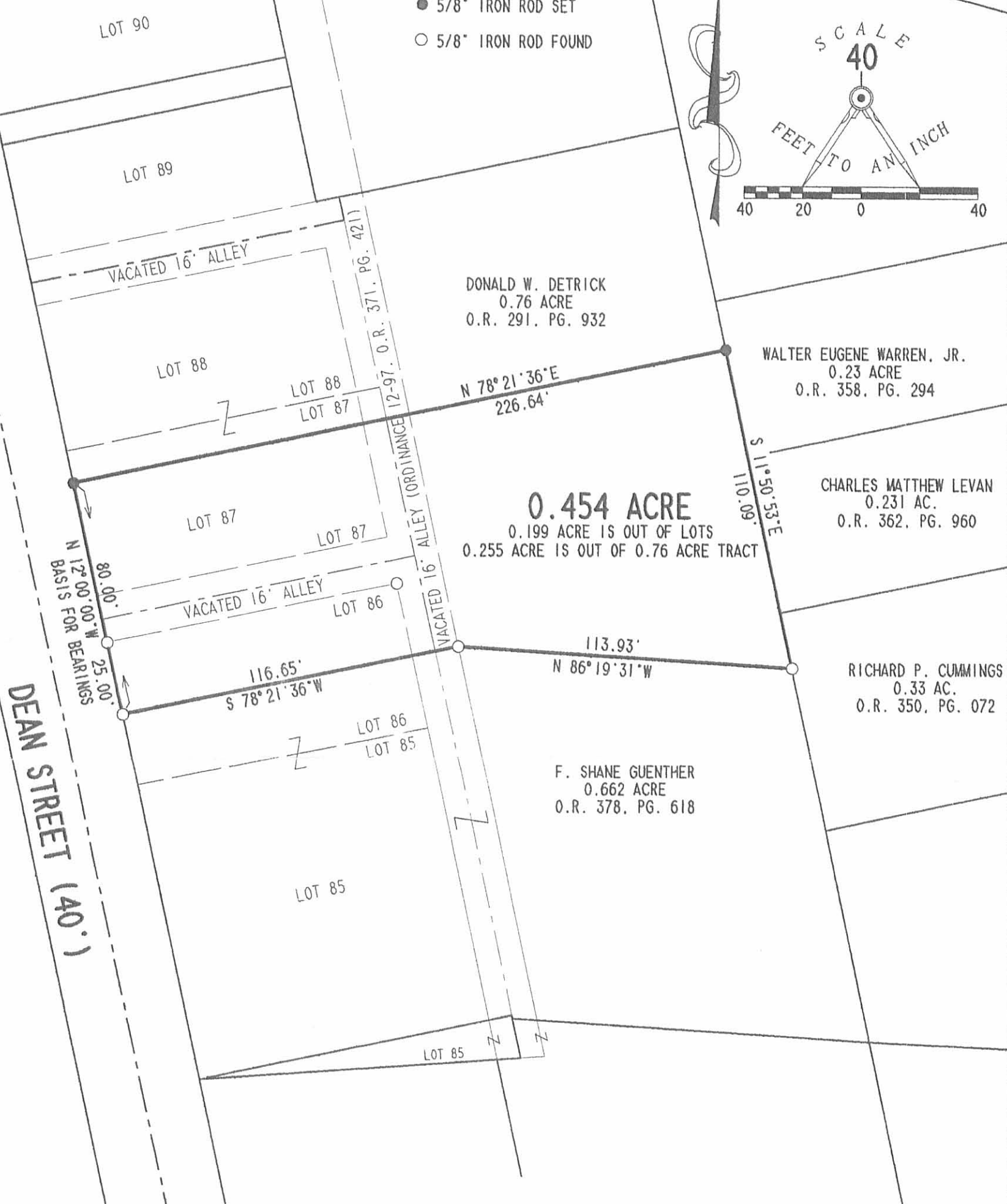
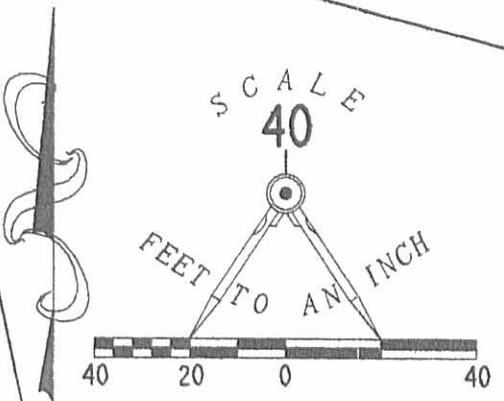
Jeffrey I. Lee
Jeffrey I. Lee
Professional Surveyor 6359
July 10, 1998

L-1665



LEGEND

- 5/8" IRON ROD SET
- 5/8" IRON ROD FOUND



DONALD W. DETRICK
0.76 ACRE
O.R. 291, PG. 932

WALTER EUGENE WARREN, JR.
0.23 ACRE
O.R. 358, PG. 294

CHARLES MATTHEW LEVAN
0.231 AC.
O.R. 362, PG. 960

RICHARD P. CUMMINGS
0.33 AC.
O.R. 350, PG. 072

F. SHANE GUENTHER
0.662 ACRE
O.R. 378, PG. 618

0.454 ACRE
0.199 ACRE IS OUT OF LOTS
0.255 ACRE IS OUT OF 0.76 ACRE TRACT

SURVEY OF 0.454 ACRE OUT OF THE DONALD W. DETRICK LOTS AND 0.76 ACRE TRACT INCLUDING PART OF VACATED ALLEY OFFICIAL RECORD 291, PAGE 932 SOUTHARD ADDITION PLAT CABINET A, SLIDE 187 VIRGINIA MILITARY SURVEY 775-6155 BOKESCREEK TOWNSHIP VILLAGE OF WEST MANSFIELD LOGAN COUNTY, OHIO



ORIGINAL STAMP IN GREEN

SURVEYED BY:

Jeffrey I. Lee
JEFFREY I. LEE
PROFESSIONAL SURVEYOR 6359
JANUARY 9, 2003

COPYRIGHT 2003 BY:
LEE SURVEYING & MAPPING CO., INC.
117 North Madriver Street
BELLEFONTAINE, OHIO 43311
(937) 593-7335

2 WORKING DAYS
BEFORE YOU DIG
CALL TOLL FREE **800-362-2764**
OHIO UTILITIES PROTECTION SERVICE.

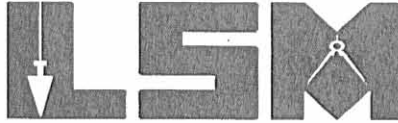
INDEXED ON MAP
8720 2P

Received 4-12-04 JML OK

Lee Surveying and Mapping Co., Inc.

Land Surveys • Topography • Subdivisions • Construction Layout

117 N. Madriver St.
Bellefontaine OH 43311



Phone: (937) 593-7335
Fax: (937) 593-7444

0.013 ACRE TRACT

Lying in Virginia Military Survey 775-6155, Village of West Mansfield, Bokescreek Township, Logan County, Ohio.

Being the east half of a 16 feet wide alley of the Southard Addition as plated in Plat Cabinet A, Slide 187 of the Logan County Records of Plat 5 and being more particularly described as follows:

Beginning at a railroad spike set on the east right-of-way of Dean Street (60 feet wide) on the center-line of 16 feet wide east-west alley between Lot 90 and Lot 91.

THENCE, with the center-line of the said 16 feet wide alley, N 77°-40'-24"E, a distance of 109.78 feet to a 5/8 inch iron rod set at the intersection of center-lines of the said east-west alley and a north-south 16 feet wide alley at THE TRUE POINT OF BEGINNING.

THENCE, N 77°-40'-24"E, a distance of 8.27 feet to a 5/8 inch iron rod set.

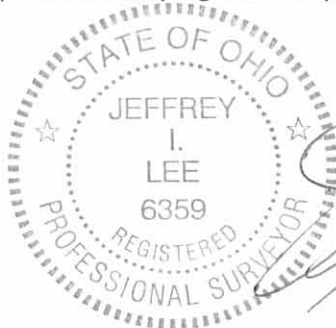
THENCE, with the west line of the Steven T. Loffing and Andra R. Loffing 0.33 acre tract (O.R. 691, Pg. 606), S 11°-59'-42"E, a distance of 68.00 feet to a 5/8 inch iron rod set.

THENCE, S 77°-40'-24"E, a distance of 8.27 feet to a 5/8 inch iron rod set on the center of the north-south alley.

THENCE, with the center-line of the north-south 16 feet alley, N 11°-59'-42"W, a distance of 68.00 feet to the point of beginning.

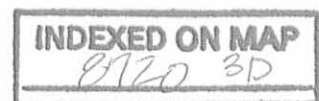
Containing 0.013 acre.

The basis for bearings is the west line of Douglas C. Stewart and Billie J. Stewart 0.33 acre tract being S 11°-59'-42"E, and all other bearings are from angles and distances measured in a field survey by Lee Surveying and Mapping Co., Inc. on March 30, 2004



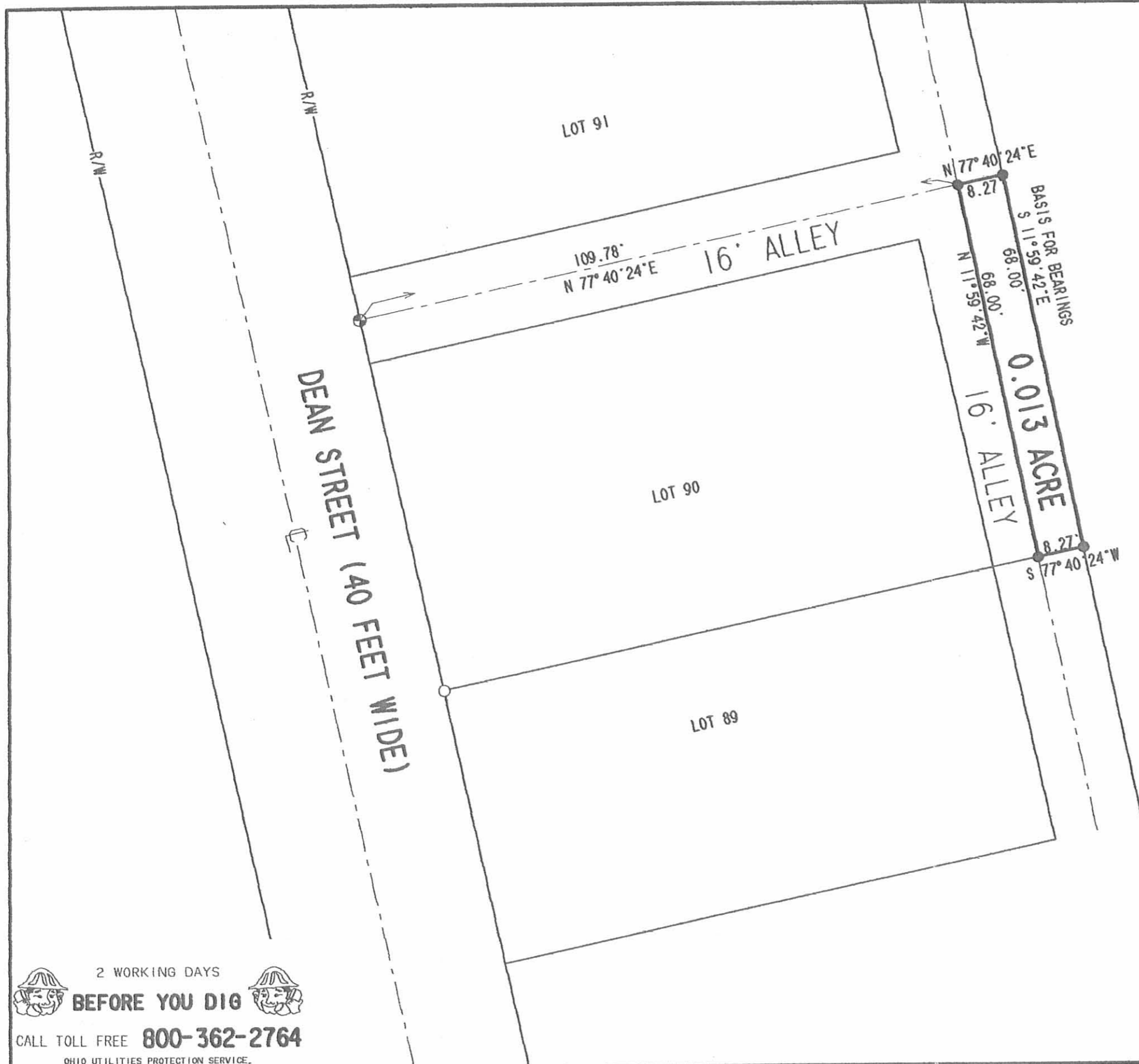
Description prepared by:

Jeffrey I. Lee
Jeffrey I. Lee
Professional Surveyor 6359
April 2, 2004



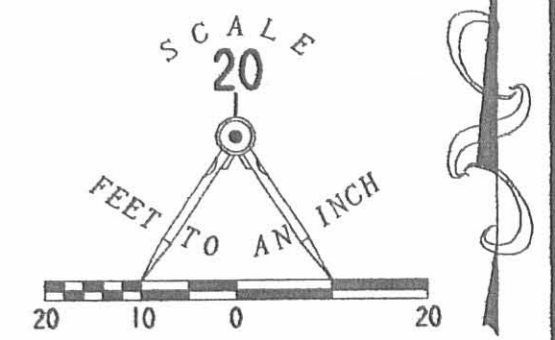
ORIGINAL STAMP IN GREEN

1665034



LEGEND

- 5/8 INCH IRON ROD SET
- 5/8 INCH IRON ROD FOUND
- ⊕ RAILROAD SPIKE SET



STEVEN T. LOFFING AND ANDRA R. LOFFING
 0.33 ACRE TRACT
 O.R. 691, PG. 606

A SURVEY OF A
 0.013 ACRE TRACT
 SOUTHARD ADDITION
 PLAT CABINET A, SLIDE 187
 VIRGINIA MILITARY SURVEY 775-6155
 VILLAGE OF WEST MANSFIELD
 BOKESCREEK TOWNSHIP
 LOGAN COUNTY, OHIO



SURVEYED BY:
Jeffrey I. Lee
 JEFFREY I. LEE
 PROFESSIONAL SURVEYOR 6359
 MARCH 30, 2004

COPYRIGHT 2004 BY:
 LEE SURVEYING & MAPPING CO., INC.
 117 North Madriver Street
 BELLEFONTAINE, OHIO 43311
 (937) 593-7335

ADW D412 1665034 1665034-3

2 WORKING DAYS
BEFORE YOU DIG
 CALL TOLL FREE **800-362-2764**
 OHIO UTILITIES PROTECTION SERVICE.

INDEXED ON MAP
 8720 3P