

Received 6-26-95 OK JCH



Lee Surveying and Mapping Co.



Farm Surveys • Lot Surveys • Topography • Subdivisions • Construction Layout

143 EAST COLUMBUS AVENUE
BELLEFONTAINE, OHIO 43311

(513) 593-7335

JEFFREY I. LEE, P.S.

TAMPLIN 1.377 ACRES

Lying in V.M.S. 775-6155, Village of West Mansfield, Bokescreek Township, Logan County, Ohio.

Being out of that 153.34 acre tract in the name of Lewis W. Tamplin as deeded an described in Official Record 54, Page 706, Tract I of the Logan County Records of Deeds and being more particularly described as follows:

Beginning at a 5/8 inch iron rod found at an angle in the center-line of County Road 142 (Main Street). Said 5/8 inch iron rod is Station 5 + 79, County Engineer's Field Book 497, Page 60.

THENCE, with the center-line of County Road 142, N 1°-05'-00" E, a distance of 241.71 feet to a railroad spike set.

THENCE, S 88°-20'-17" E, a distance of 206.84 feet to a 5/8 inch iron rod set, passing through a 5/8 inch iron rod set at 36.0 feet.

THENCE, S 2°-07'-00" W, a distance of 244.58 feet to a 5/8 inch iron rod set.

THENCE, S 10°-30'-36" E, a distance of 23.13 feet to a 1 1/2 inch metal pipe found, marking the northeast corner of Charles Kerns 0.55 acre tract as recorded in Volume 251, Page 269 of the Logan County Records of Deeds.

THENCE, with the north line of the Charles Kerns 0.55 acre tract, S 75°-21'-39" W, a distance of 191.98 feet to a rail road spike set in the center-line of County Road 142, passing a 1 1/2 inch metal pipe found marking the northwest corner of Charles Kerns 0.55 acre tract at 155.98 feet.

THENCE, with the center-line of County Road 142, N 14°-32'-44" W, a distance of 82.66 feet to the place of beginning.

Containing 1.377 acres.

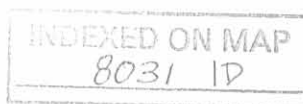
The basis from bearing is based upon the center-line of County Road 142 being N 1°-05'-00" E and all other bearings are from angles and distances measured in a field survey by Lee Surveying and Mapping Company on May 2, 1990.



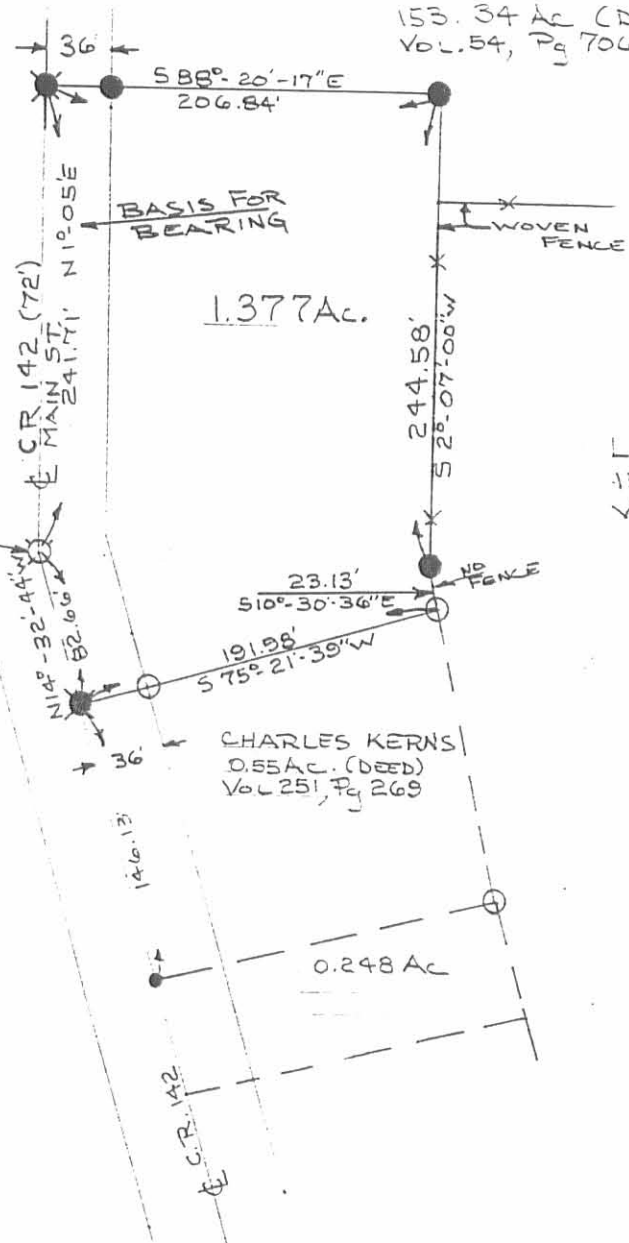
Description prepare by:

Jeffrey I. Lee
Jeffrey I. Lee
Professional Surveyor 6359
May 8, 1990
Revised June 26, 1995

ORIGINAL STAMP IN GREEN



LEWIS W. TAMPLIN
153.34 AC (DEED)
VOL. 54, Pg. 706 TRI



1.377Ac.

LEWIS W. TAMPLIN
153.34 AC (DEED)
VOL. 54, Pg. 706 TRI

SCALE
1" = 100'

- LEGEND
- ⊗ 5/8" IRON FND
 - P.K. NAIL FND
 - 1/2" PIPE FND
 - ⊗ RAILROAD SPIKESET
 - 5/8" IRON ROD SET

SURVEY OF 1.377 ACRES OUT OF
THE LEWIS W. TAMPLIN 153.34 AC. (DEED)
VOL. 54, Pg. 706 TRACT I
V.M.S. 775/6155
VILLAGE OF WEST MANSFIELD
BOKES CREEK TOWNSHIP
LOGAN COUNTY, OHIO

INDEXED ON MAP
8031 1P



ORIGINAL STAMP IN GREEN

By: *[Signature]*
JEFFREY I. LEE
PROF. SURVEYOR #6359
MAY 2, 1990
Revised June 26, 1995

LEE SURVEYING & MAPPING CO.
143 East Columbus Avenue
BELLEFONTAINE, OHIO 43
(513) 593-7335