

Deed Description
0.412 Acre out of John B. and Joan P. Kelly's 5.00 acres
VMS 775 & 6155, West Mansfield, Ohio

Situated in the Village of West Mansfield, Bokescreek Township,
Logan County, Ohio and being part of Virginia Military Survey
No. 775 & 6155, more particularly described as follows:

Beginning at the intersection of the center lines of State Route
No. 47 and Dean Street at Station 653+99.65 as shown on Plan L-34
on file in the Logan County Engineer's Office; thence with the center
line of said State Route No. 47 North 83 Degrees 16 Minutes West
537.51 feet to a railroad spike set at station 648+62.14 said point
being the true point of beginning of this description.

Thence South 7 Degrees 06 Minutes West 164.89 feet, passing an iron
pin set on the right of way line at 25.00 feet, to an iron pin;

Thence South 89 Degrees 16 Minutes West 104.83 feet to an iron pin;

Thence North 6 Degrees 44 Minutes East 178.58 feet, passing an
iron pin set on the right of way of said highway at 153.58 feet,
to a railroad spike set in the center of said highway at station
647+57.12;

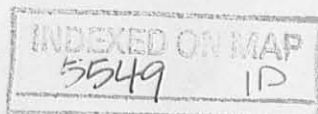
Thence with the center of said highway South 83 Degrees 16 Minutes
East 105.02 feet to the point of beginning;

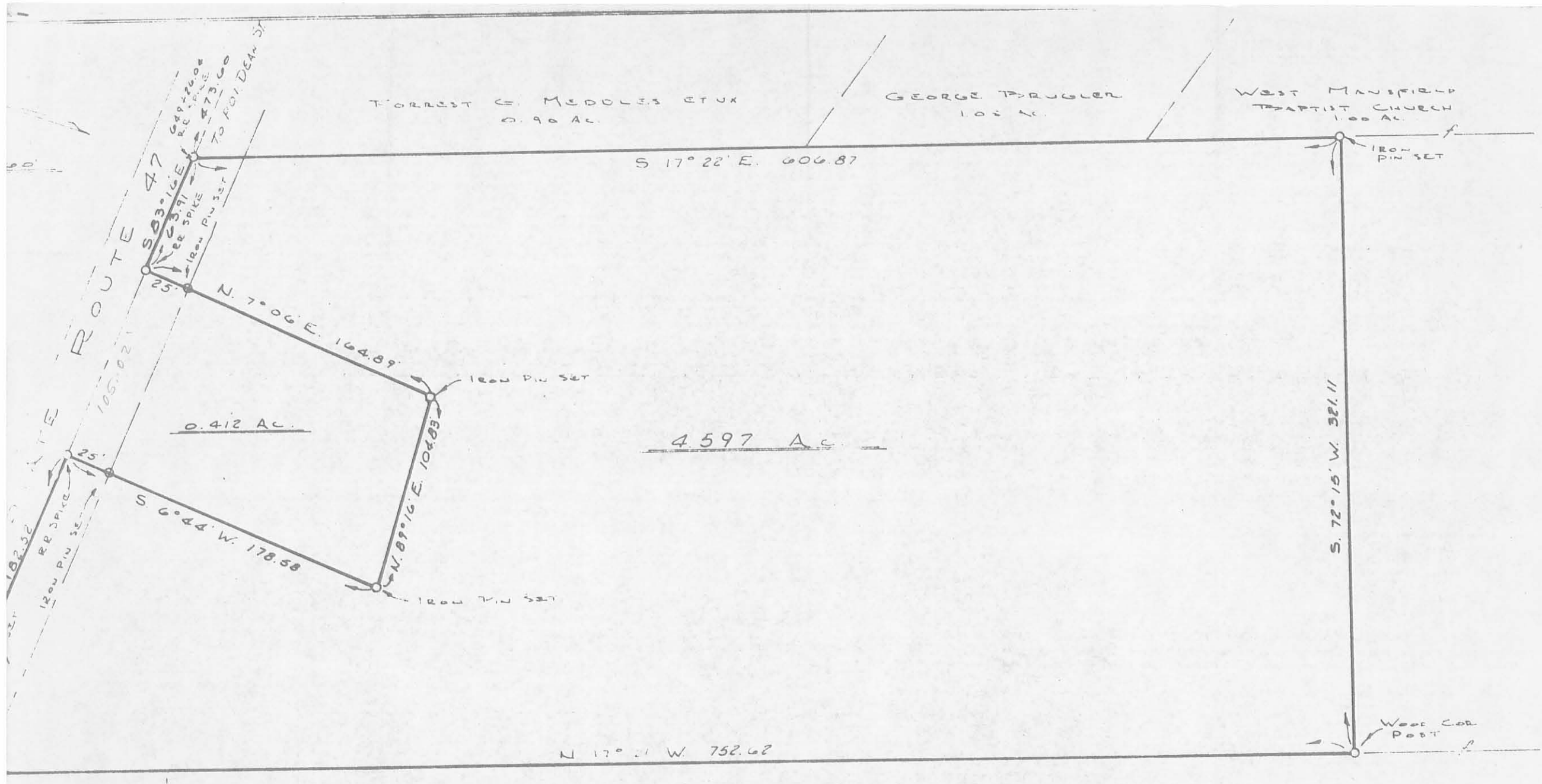
Containing 0.412 acre out of John B. and Joan P. Kelly's 5.00
acres as recorded in Volume 349 Page 5 of the Logan County
Recorder's Deed Records.

Surveyed Feb. 10, 1974

By Larry C. Blosser SIF # 1199

Checked By: Cecil E. Mengerud
R Surv. # 1315





5549 IP

INDEXED ON MAP

A SURVEY OF JOHN B & LOAN F KELLY'S 4.597 ACRES
 IN V. M. S. # 775 AND 6155, IN THE VILLAGE OF
 WEST MANSFIELD, BOKESCREEK TWP, LOGAN CO, OHIO
 SURVEYED FEB 24 1974
 BY LARRY E. BLOSSER - LIT # 199

Cecil E. Mansfield
 RS 3.51

Situated in the Village of West Mansfield, Bokescreek Township, Logan County, Ohio, V. M. S. 775 and 6155 and being off the east side of that 5.0 acre tract described in Volume 352, Page 316 of the Logan County Records of Deeds and more particularly described as follows:

Beginning at a railroad spike in the center-line of State Route 47, said point marking the northeast corner of said 5.0 acre tract and lying westerly, along the center-line of S. R. 47, a distance of 473.60 feet from the center-line of Dean Street and designated as being Station 649+26.04 on Plan L-34 on file in the County Engineers Office.

THENCE, with the east line of the 5.0 acre tract, S 17°-22' E, a distance of 606.87 feet, to an iron rod marking the Southeast corner of said 5.0 acre tract.

THENCE, with the south line of the 5.0 acre tract, S 72°-15' W, a distance of 126.63 feet, to an iron rod set for the Southwest corner of this survey.

THENCE, N 17°-22' W, a distance of 483.72 feet to an iron rod marking the Southeast corner of a 0.412 acre lot as recorded in Volume 357, Page 34 of the Logan County Records of Deeds.

THENCE, with the east line of said 0.412 acre lot, N 7°-06' E, a distance of 164.89 feet to a railroad spike in the center-line of S.R. 47, passing an iron rod set in the right-of-way at 139.89 feet.

THENCE, with the center-line of S.R. 47, S 83°-16' E, a distance of 63.91 feet, to the point of beginning. Containing 1.706 acres.

Previous deed recordings:

Volume 352, Page 316

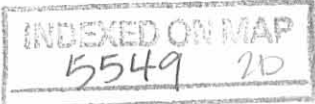
Volume 357, Page 34

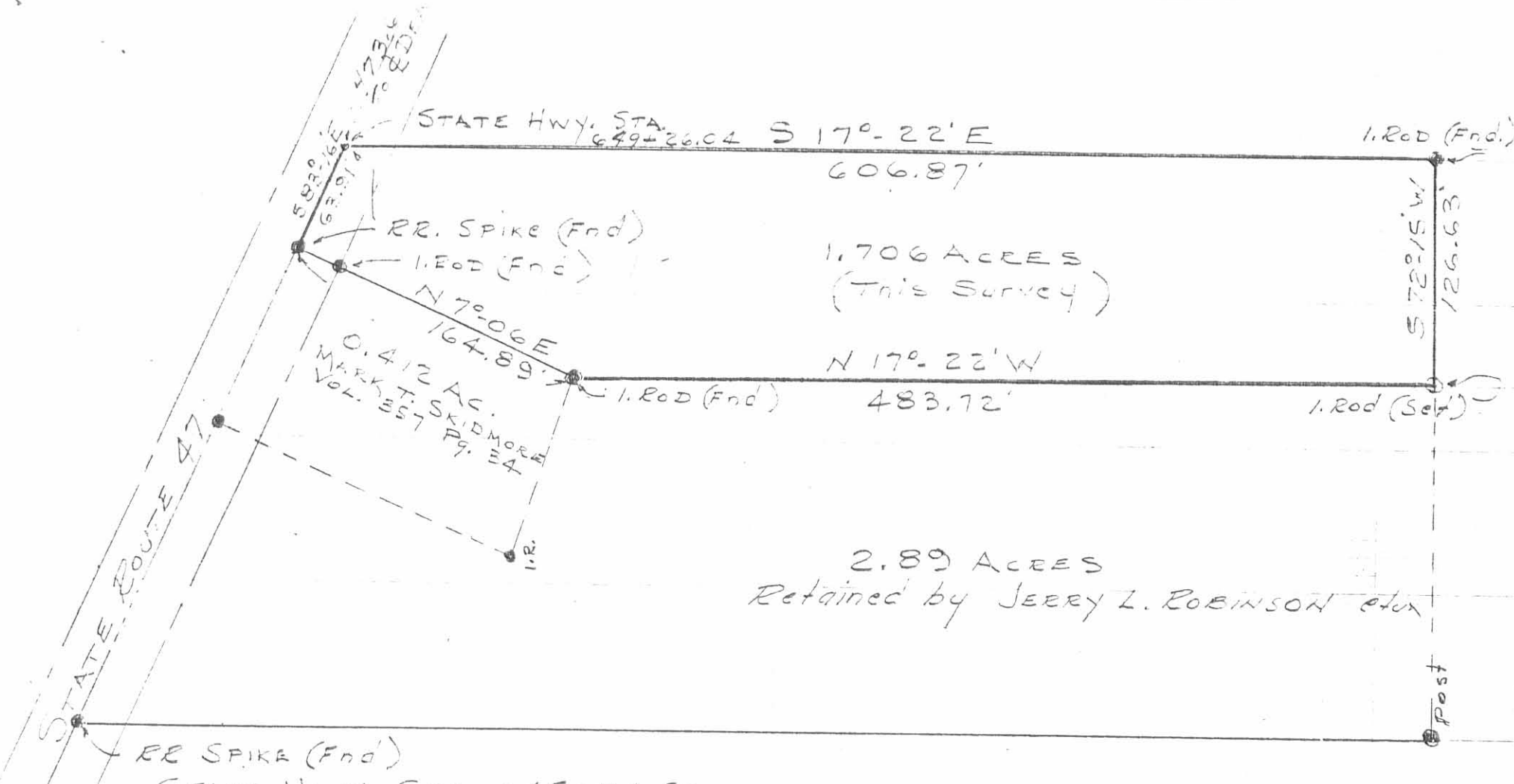
Surveyed, September 8, 1975

by Clayton M. Lee, P.S.

Clayton M. Lee, P. S.

Reg. Surveyor # 6181





1.706 ACRES
(This Survey)

2.89 ACRES
Retained by JERRY L. ROBINSON et ux

STATE ROUTE 47

STATE HWY. STA. 649+26.04 S 17°-22' E

RR SPIKE (Fnd)

1.20d (Fnd)

N 7°-06' E

0.412 AC.
MARKED SKIDMORE
VOL. 357 PG. 34

N 17°-22' W

1.20d (Fnd)

483.72'

1.20d (Set)

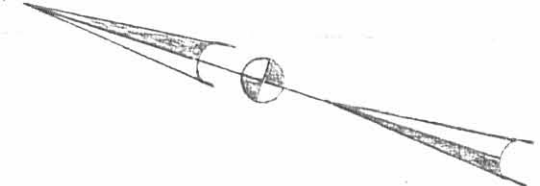
572°15' W
126.63'

Post

RR SPIKE (Fnd)

STATE HWY. STA. 645+74.59

NORTH



SCALE ~ 1" = 80'

SURVEY OF 1.706 ACRES OUT OF
THE 4.597 ACRE TRACT IN THE NAME OF
JERRY L. ROBINSON et ux PENNY J.
V.M.S. 775 & 6155, WEST MANSFIELD,
BOKESCREEK TWP, LOGAN COUNTY, OHIO

NOTE: Entire 5 Acres Recorded

INDEXED ON MAP
5549 2P

IN VOL. 352 PG. 316

Survey Sept. 8, 1975

Clayton M. Lee
Clayton M. Lee
Reg. Surv. No. 6181