

Received 12-11-89 DK

LESLIE H. GEESLIN
REGISTERED SURVEYOR NO. 5248
P. O. BOX 274
RUSHSVLVANIA, OHIO 43347

TELEPHONE: (513) 468-2793

WEST LIBERTY-SALEM BOARD OF EDUCATION SURVEY

December, 1989

The following described real estate situated in the State of Ohio, County of Logan, Township of Liberty, partly in the village of West Liberty, being part of Sections 27 and 33, Town 5, Range 13, M.R.S. and more particularly described as follows:

Beginning at a 5/8 inch iron bar set in the north line of a 4.25 acre tract in the name of West Liberty Board of Education and described in D.B. Vol. 125 Page 123 at the southwest corner of Janet L. Craig's 15.90 acre tract as described in D.B. Vol. 307 Page 428.

THENCE with the north line of said Board of Education's 4.25 acre tract S. 86° 17' 11" W. 734.33 feet to a 5/8 inch iron bar set in the north line of the old I.C. & E. Traction Line, passing a wood corner post at the northeast corner of a 0.11 acre tract as described in D.B. Vol. 75 Page 261 in the name of James Harrod.

THENCE with said north line N. 50° 44' 29" W. 1164.09 feet to a 5/8 inch iron bar set in the east line of John D. Hostetler's 4.13 acre tract as described in D.B. Vol. 321 Page 866.

THENCE with said east line N. 00° 49' 34" W. 517.04 feet to a cross tie corner post found in said Hostetler's south line and the north line of Section 33.

THENCE with said section line S. 89° 16' 41":E. 1528.93 feet to a 6 inch wood corner post in the south line of Adriel School Inc.'s 68.54 acre tract as described in O.R. Vol. 12 Page 654, passing the southwest corner of said 68.54 acre tract at 404.6 feet, said corner post being the northwest corner of said Craig's 15.90 acre tract.

INDEXED ON MAP
7973 101

WEST LIBERTY-SALEM BOARD OF EDUCATION SURVEY

December, 1989

- continued -

THENCE with said Craig's west line S. 5° 25' 43" E. 1192.18 feet to the place of beginning.

Continuing 37.128 acres more or less and being a new survey of the tract described in D.B. Vol. 374 Page 426.

The above described 37.128 acre tract having 8.47 acres in Section 27 in the Village of West Liberty, 11.08 acres in Section 33 in the Village of West Liberty and 17.578 acres in Section 33.

Bearings are based on the north line of Section 33 in this field survey.



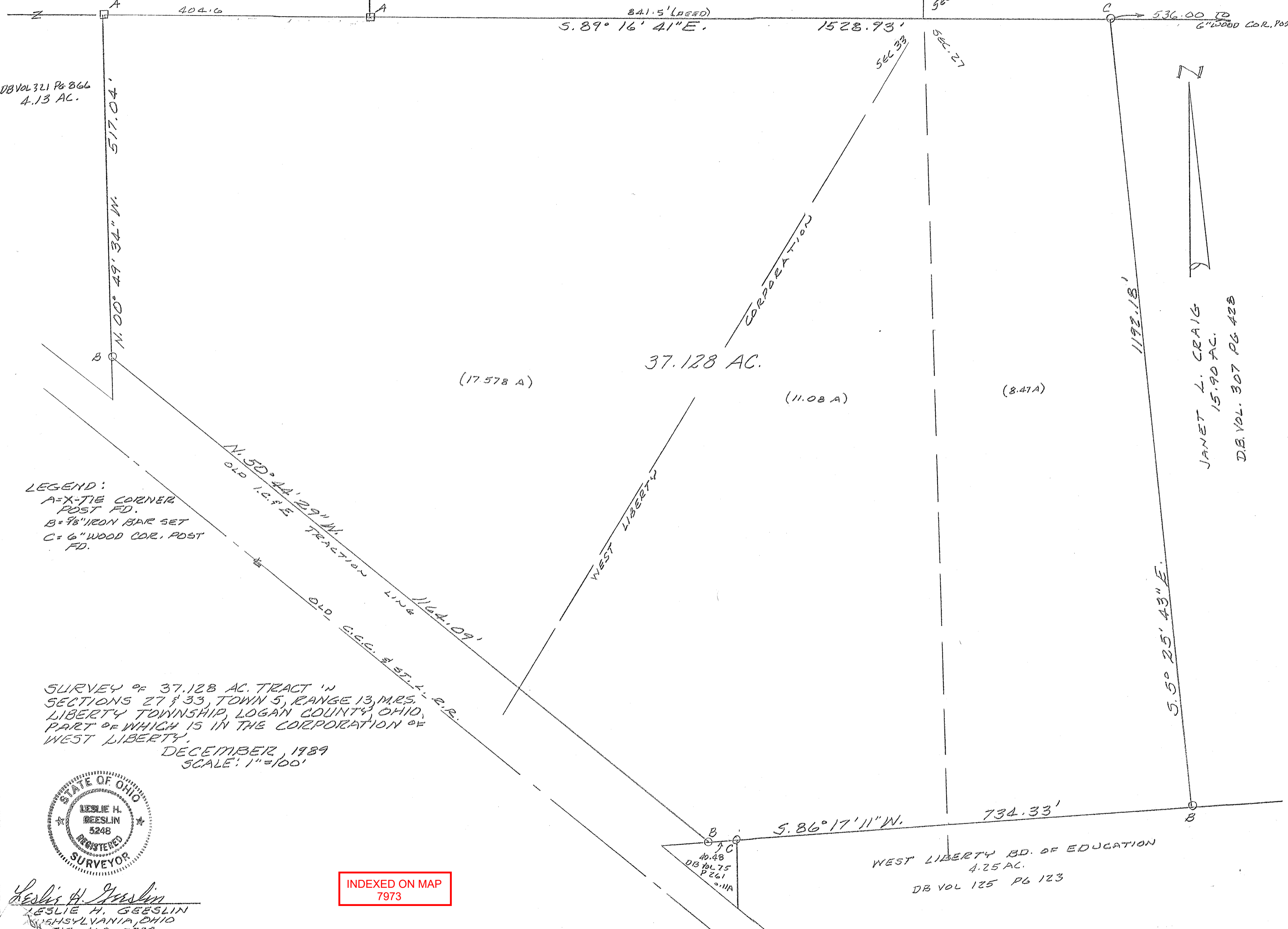
Leslie H. Geeslin

INDEXED ON MAP
7973 1D-2

JOHN D. HOSTETLER
148.37 AC.
DB VOL 321 PG 866

ADRIEL SCHOOL INC.
68.54 AC.
OR VOL 12 PG 654

SEC. 34
LINE
SEC. 28
SEC. 27



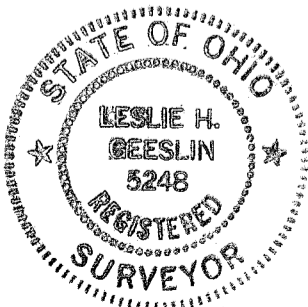
DB Vol 321 Pg 866
4.13 AC.

536.00 TO
6\"/>

JANET L. CRAIG
15.90 AC.
D.B. VOL. 307 PG 428

LEGEND:
A=X-TIE CORNER
POST FD.
B=9/8\"/>

SURVEY OF 37.128 AC. TRACT IN
SECTIONS 27 & 33, TOWN 5, RANGE 13, MRS.
LIBERTY TOWNSHIP, LOGAN COUNTY, OHIO,
PART OF WHICH IS IN THE CORPORATION OF
WEST LIBERTY.
DECEMBER, 1989
SCALE: 1\"/>



Leslie H. Geeslin
LESLIE H. GEESLIN
PENNSYLVANIA, OHIO
613-468-2793

INDEXED ON MAP
7973

WEST LIBERTY BD. OF EDUCATION
4.25 AC.
DB VOL 125 PG 123

Received 2-5-90 DE

LESLIE H. GEESLIN
REGISTERED SURVEYOR NO. 5248
P. O. BOX 274
RUSHSVLVANIA, OHIO 43347

TELEPHONE: (513) 468-2793



WEST LIBERTY-SALEM BOARD OF EDUCATION SURVEY

February 2, 1990

Leslie H. Geeslin

The following described easement situated in the State of Ohio, County of Logan, Township of Liberty, partly in the Village of West Liberty in Sections 27 and 33, Town 5, Range 13, M. R. S. and more particularly described as follows:

Beginning at the northwest corner of Lot 113 of Western Addition No. 2 in the Village of West Liberty.

Thence S. 3° 51' 11" E. 16.94 feet to a point in the north line of the old C. C. C. & St. L. R. R.

Thence with said north line N. 50° 44' 02 " W. 633.62 feet to a point at the southeast corner of a 0.11 acre tract recorded in D. B. Vol. 75 Page 261 in 1989.

Thence with the east line of said tract N. 2° 00' 30" E. 96.09 feet to a wood corner post found in the south line of West Liberty-Salem Board of Education's 36.88 acre tract as described in D. B. Vol. 374 Page 426.

Thence with said south line N.86° 17' 11" E. 32.00 feet to a point.

Thence S. 2° 00' 30" W. 85.94 feet to a point.

Thence parallel with and 32 feet north of the north line of said railroad S. 50° 44' 02" E. 553.91 feet to a point.

Thence N. 85° 56' 02" E. 235.07 feet to a point.

Thence S. 3° 51' 11" E. 32.00 feet to a point in the north line of a 16.0 foot alley.

Thence with the north line of White Street S. 85° 56' 02" W. 60.00 feet to the northwest corner of said street.

Thence with the west line of White Street S. 3° 51' 11" E. 16.00 feet to the northeast corner of Lot 113.

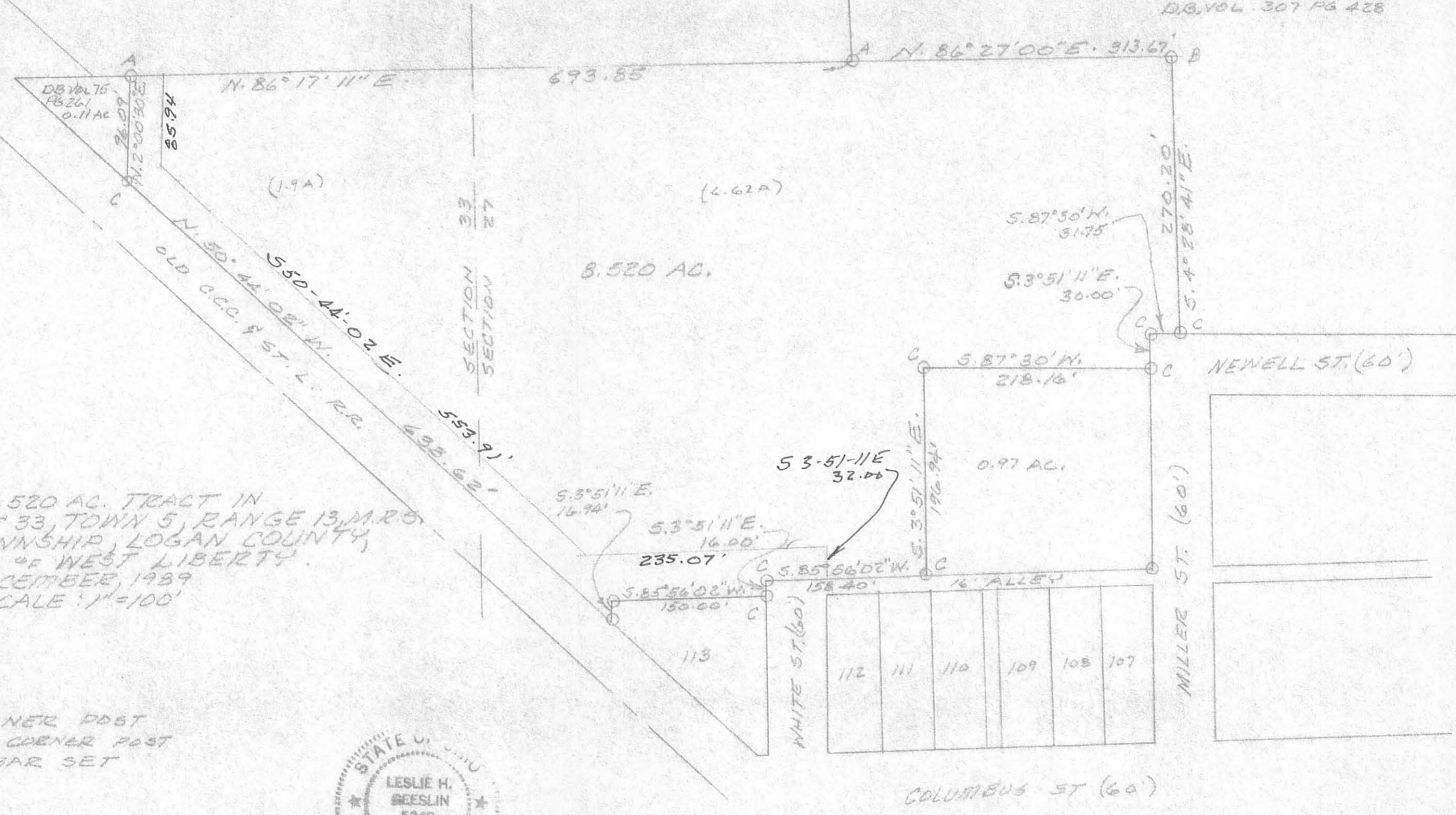
Thence with the north line of said Lot 113 S. 85° 56' 02" W. 150.00 feet to the place of beginning.

INDEXED ON MAP
7973 20

SEE REVISED PLAT / DESCRIPTION (R-4388)

WEST LIBERTY - SALEM BD. OF EDUCATION
36.88 AC
D.B. VOL. 374 PAGE 426

JANET L. CRAIG
15.90 AC
D.B. VOL. 307 PG 428



SURVEY OF 8.520 AC. TRACT IN
SECTIONS 27 & 33, TOWN 5, RANGE 13, M.R. 5,
LIBERTY TOWNSHIP, LOGAN COUNTY,
OHIO, VILLAGE OF WEST LIBERTY.
DECEMBER, 1989
SCALE: 1"=100'

LEGEND:
A = WOOD CORNER POST
B = CROSS TIE CORNER POST
C = 9/8" IRON BAR SET



Leslie H. Geeslin
LESLIE H. GEESLIN
RUSHSVANIA, OHIO
PH. 513-468-2793

INDEXED ON MAP
7973 2P