

PUBLIC SQUARE
WEST LIBERTY
LIBERTY TOWNSHIP

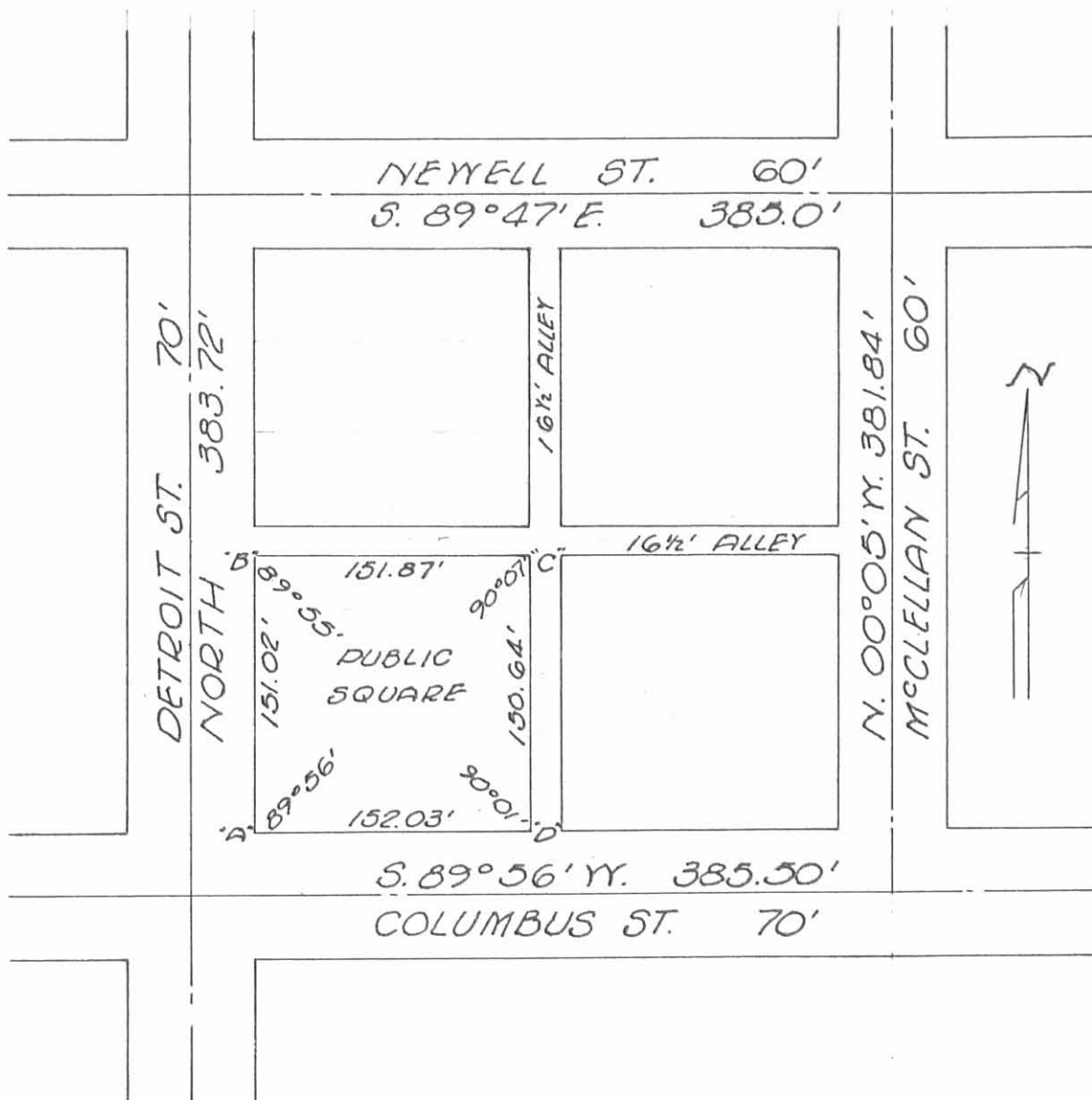
September 15, 1964

The following described real estate situated in the Village of West Liberty, Liberty Township, Logan County, Ohio and being the Public Square as shown in Logan County Recorders Plat Book A, Volume 1, Page 65 and more particularly described as follows:

Beginning at a chisled cross at the intersection of the East line of Detroit Street and the North line of Columbus Street; thence with the East line of Detroit Street North 151.02 feet to a nail in the south line of a $16\frac{1}{2}$ foot alley; thence with the south line of said $16\frac{1}{2}$ foot alley S. $89^{\circ}-56'$ E. 151.87 feet to an iron pin in the West line of a $16\frac{1}{2}$ foot alley; thence with the west line of said $16\frac{1}{2}$ foot alley S. $0^{\circ}03'$ E., 150.64 feet to an iron pin in the north line of Columbus Street; thence with the north line of Columbus Street S. $89^{\circ}56'$ W., 152.03 feet to the place of beginning.

4327 10

INDEXED ON MAP



PLAT OF
PUBLIC SQUARE OF YEAST LIBERTY, OHIO
FOR
LIBERTY TOWNSHIP TRUSTEES

SCALE 1" = 100'
SEPT. 15, 1964

(4327) 1P

INDEXED ON MAP

- *A* = Chisled + on conc. walk
- *B* = P.K. Nail Set in T-35
- *C* = 5/8" ϕ Bar Set
- *D* = 5/8" ϕ Bar Set

REFERENCES:

INSKEEP Bk. 13, Pg. 124
Index No. 2511, Drawer "R"
Field Book No. 703, Pg. 16

Don R. Dodson
Registered Surveyor
Logan County Engineering Dept.

FB 703

SURVEY OF
PUBLIC SQUARE
WEST LIBERTY, O.

FOR
THE VILLAGE OF WEST LIBERTY

☐ of DETROIT-COLUMBUS-NEWELL STS.
established by bisecting curbs or walks.
☐ McCLELLAN established as
shown in INSKEEP BK. 13, PG. 124.

P-K nails set on ☐

REF:

INSKEEP BK 13, PG. 124

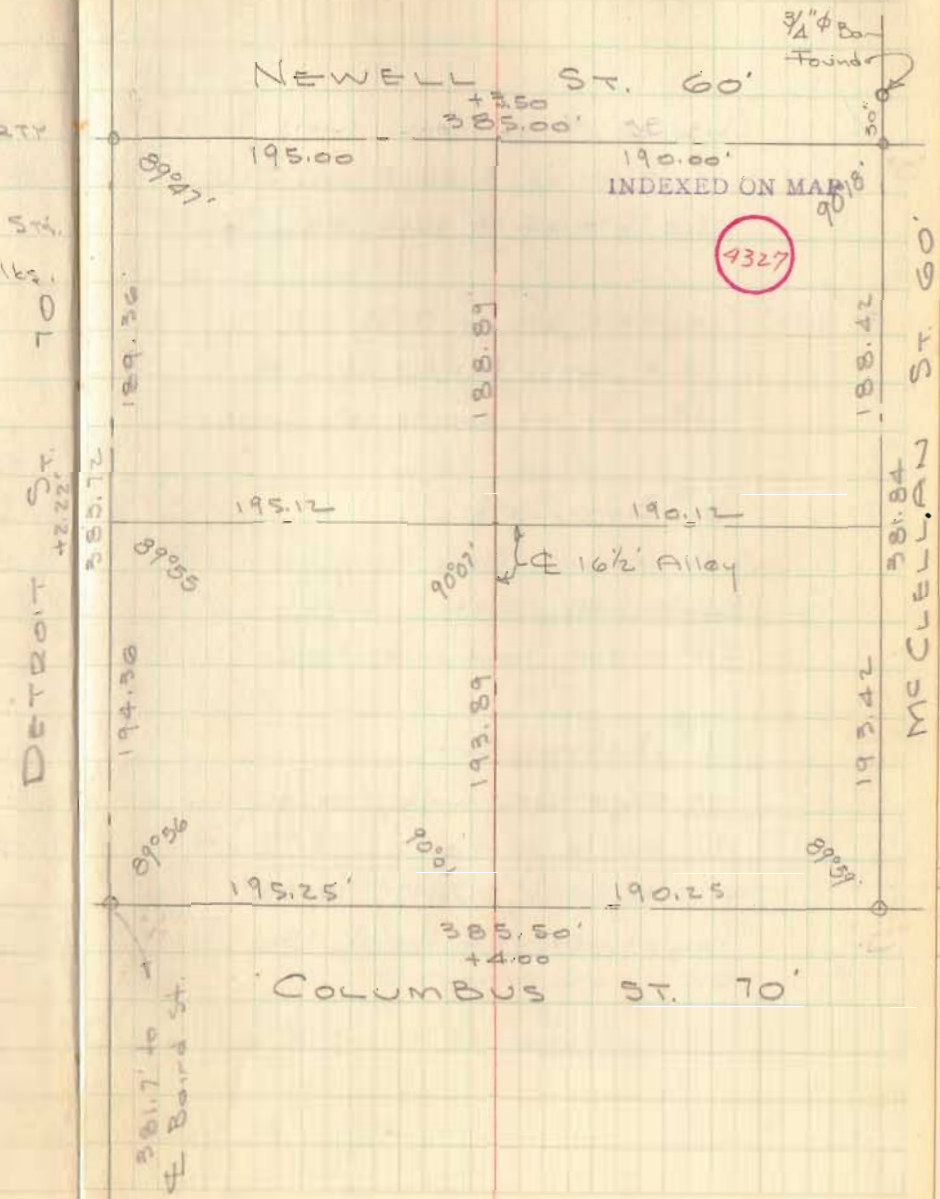
JOB No. 2511, Drawer "R",

Survey of lot 23, by C. Mengarini

Dodson
Tavis
Ciro

9-15-64
70°

16



NEWELL ST. 60'

195.00

190.00'

INDEXED ON MAP

4327

195.12

190.12

16 1/2' Alley

195.25'

190.25

COLUMBUS ST. 70'

DETROIT ST. 70'

McCLELLAN ST. 60'

FB 703

PUBLIC SQUARE
CONT'D.

- "A" Chiseled + on Conc. walk, Set.
0.65' W. of E. edge Conc. walk
2.0' N. of N. edge E&W. Conc. walk
- "B" P-k nail set in T-35,
0.4' W. of E. edge of walk
13.0' N. of end of Conc. walk
- "C" $\frac{5}{8}$ " ϕ Bar Set
S.E. cor. Conc. Block Cor., North 16.10
Power pole, East 13.45'
24" maple, southeast 26.6'
- "D" $\frac{3}{8}$ " ϕ Rebar Set
N. edge Conc. walk, south 2.6'
12" maple, northwest, 15.75'
Fire Hydrant, North, 15.80'
Power pole, Southeast, 15.65'

9-15-64

17

