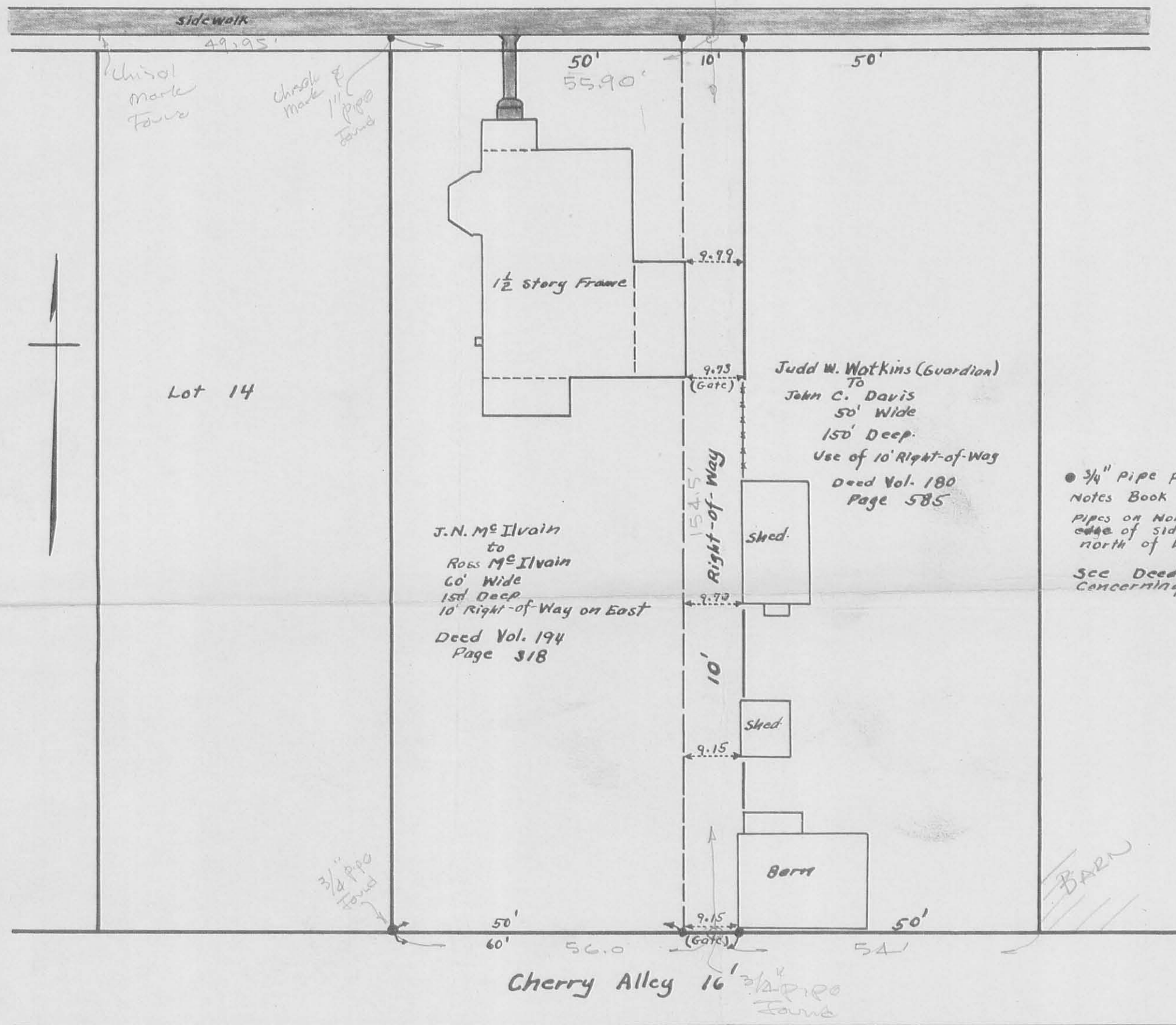


COLUMBUS STREET

Plu set for M^cILVAIN
10/4/69
D.L. DOOSON

CHISEL
MARBLE FOUND
5/8" 680
5/8" 307



• 3/4" Pipe placed as shown.
Notes Book FW-25 Pages 31-33-35
Pipes on North placed at South edge of sidewalk which is 2'-6" north of Lot Line.
See Deeds for exact wording concerning 10 foot Right-of-Way.

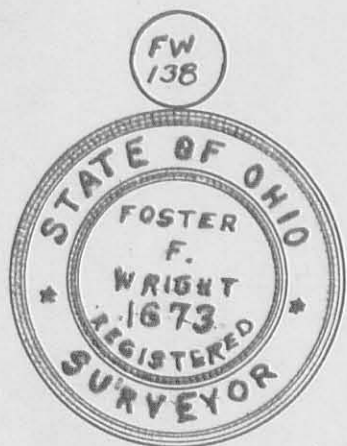
M^cILVAIN SURVEY

WEST LIBERTY OHIO

APRIL 1950

1" = 20'

F.F. WRIGHT
G.W. WILGUS



INDEXED ON MAP

2380

INDEXED ON MAP

McILVAIN SURVEY
COLUMBUS ST.

WEST LIBERTY, OHIO

SEE DRAWER "R" SURVEY 2380

- A = 1" PIPE FOUND @ S. EDGE OF
CONC. WALK - CHISEL (MARK ON WALK)^{FOUND}
- B = CHISEL MARK ON WALK FOUND
- C = " " " " "
- D = 3/4" PIPE FOUND
- E = " " "
- F = 5/8" ϕ BAR SET - CHISEL MARK FOUND
ON CONC. WALK

LINE F-E IN DISPUTE

MR. DAVIS SAYS McILVAIN SET POINT "E"
MEAS. F-E 154.5, DEED 150'
MEAS. D-E 56.0 DEED 56.0'

SET "F" @ CHISEL MARK ON WALK
55.90 FROM A - RE-CUT CHISEL MARK
MR DAVIS CONTENDS "F" SHOULD
BE 0.4'± WEST OF CHISEL MARK

POINT "E" CHECKS 54.0' FROM COR. OF
BARN, WHICH MR DAVIS SAYS IS HIS
CORNER.

DOORSON
WHITLOW
NICHOLS

10/4/69

15

