

FB 711

Resurvey T.P. 285

Washington Twp., Logan Co., Ohio

3+63.44 - P.I. - 1" dia iron fd. (bent) -

straightened & re-set

17°-11'-52" Lt.

No Curve

61.74'

3+01.70 - P.I. - 5/8" dia. capped re-bar set -

search for iron failed

20°-31'-00" Lt.

No Curve

183.20'

1+18.50 - P.I. - 5/8" dia. iron fd. (bent) -

straightened & re-set

12°-14'-08" Lt.

No Curve

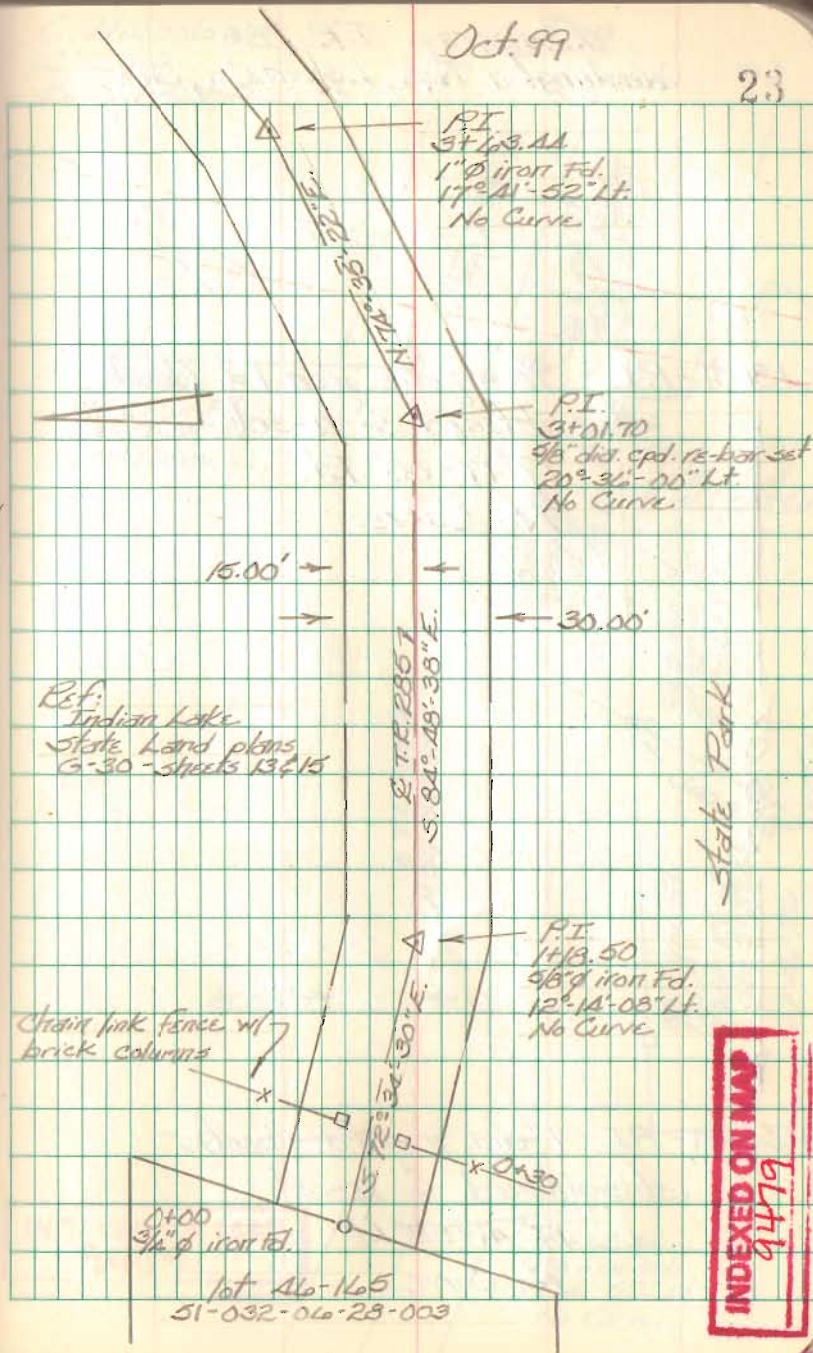
118.50'

0+00 - 3/4" dia. iron fd. (bent) -

straightened & re-set

Oct. 99

23



FB 711

Resurvey T.R. 285  
Washington Twp., Logan Co., Ohio.

4+81.51 - P.I. -  $\frac{3}{8}$ " square iron Fd. (bent) -  
straightened & re-set  
19°-17'-08" Rt.  
No Curve

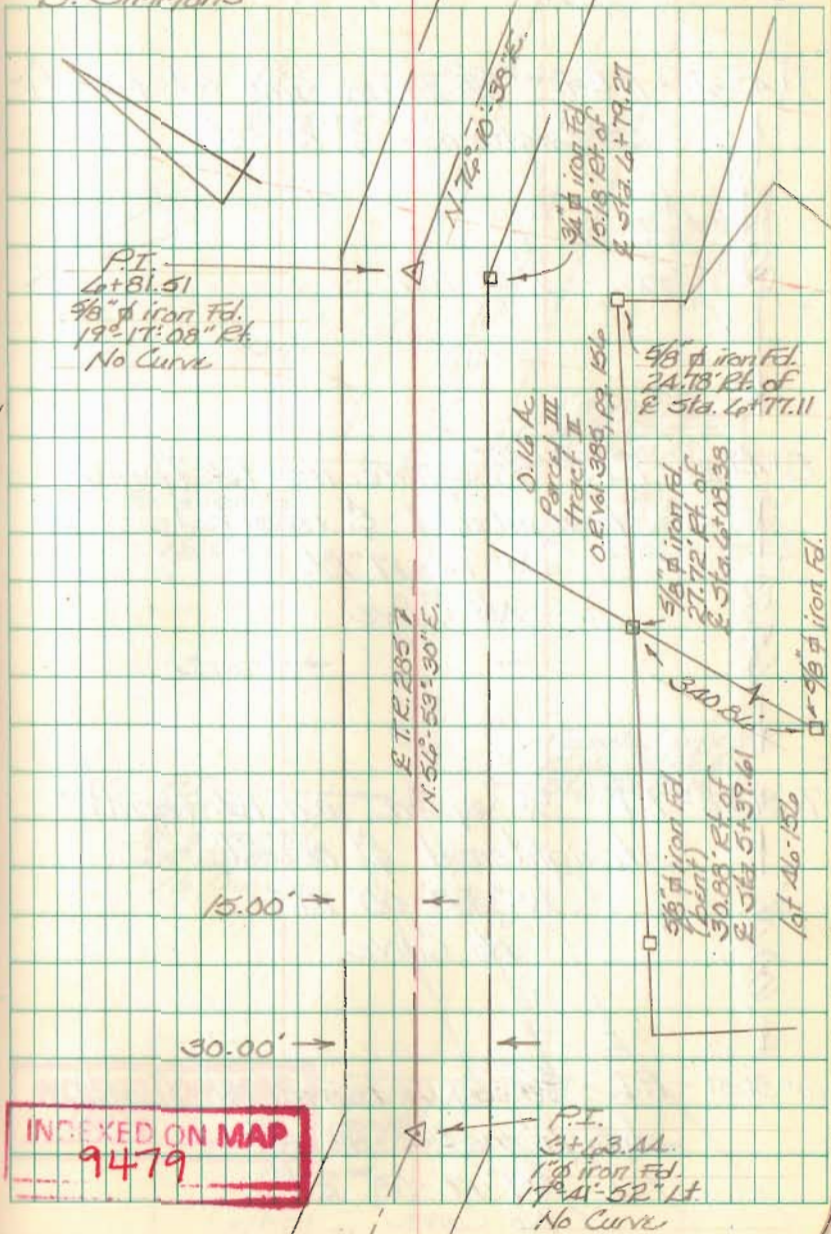
318.07'

3+63.44 - P.I. - 1" dia. iron Fd. (bent) -  
straightened & re-set  
17°-41'-52" Lt.  
No Curve

C. Nichols  
C. Dill  
B. Simmons

Oct. 99

24



P.I.  
4+81.51  
 $\frac{3}{8}$ " iron Fd.  
19°-17'-08" Rt.  
No Curve

E.T.R. 2857  
N. 54°-59'-30" E.

0.16 Ac  
Parcel III  
Tract II  
0.21 Vol. 385, pg. 156

$\frac{3}{8}$ " iron Fd.  
24.78' Pt. of  
E Sta. 4+77.11

$\frac{3}{8}$ " iron Fd.  
27.72' Pt. of  
E Sta. 6+09.38

$\frac{3}{8}$ " iron Fd.  
(bent)  
30.89' Pt. of  
E Sta. 5+37.61

At No. 156

INDEXED ON MAP  
9479

P.I.  
3+63.44  
1" iron Fd.  
17°-41'-52" Lt.  
No Curve

FB 711

Resurvey T.R. 285  
Washington Twp., Logan Co., Ohio9+43.48 - P.O.T. -  $\frac{5}{8}$ " square iron Fd. (bent) -  
straightened & re-set

76.26'

8+47.22 - P.I. -  $\frac{5}{8}$ " square iron Fd. (bent) -  
straightened & re-set  
20°-14'-17" Rt.  
No Curve

45.70'

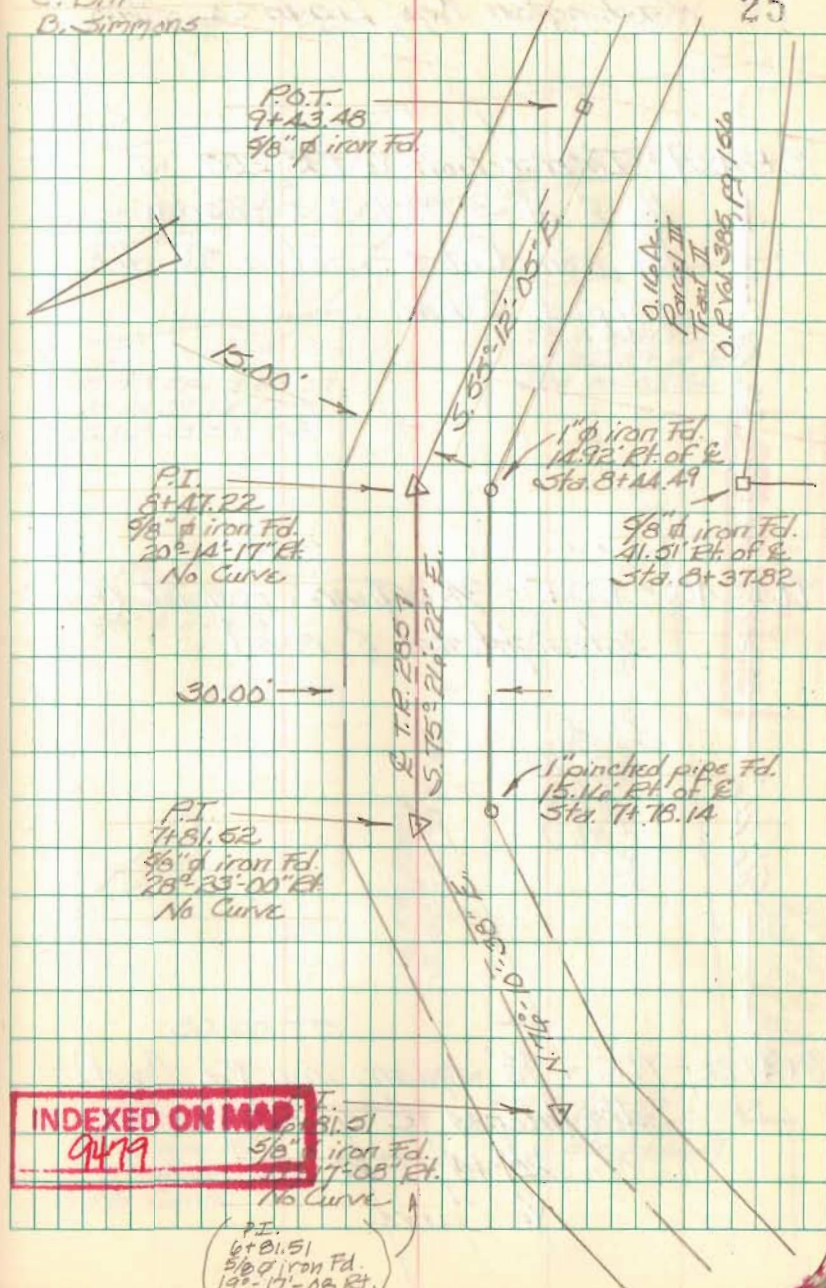
7+81.52 - P.I. -  $\frac{5}{8}$ " square iron Fd. (bent) -  
straightened & re-set  
28°-23'-00" Rt.  
No Curve

100.01'

6+81.51 - P.I. -  $\frac{5}{8}$ " square iron Fd. (bent) -  
straightened & re-set  
19°-17'-08" Rt.  
No CurveC. Nichols  
C. Dill  
B. Simmons

Oct. 99

25



FB 711

Resurvey T.R. 285  
Washington Twp., Logan Co., Ohio

10+24.09 - Intersection E.T.R. 285 w/  
the E of S.E. 708 - search  
for iron failed - Set a  $\frac{5}{8}$ " dia.  
capped re-bar.

80.61'

9+43.48 - P.O.T. -  $\frac{5}{8}$ " square iron Fd. (bent) -  
straightened & re-set

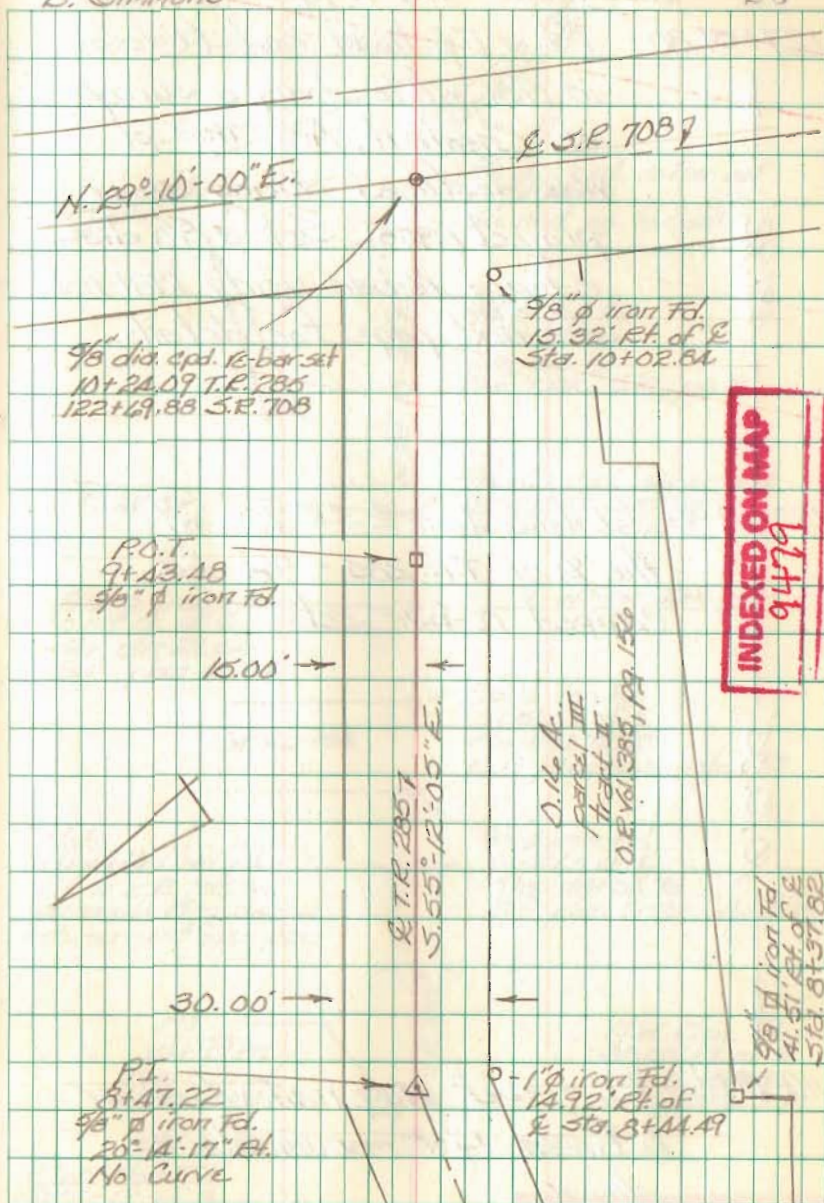
96.26'

8+47.22 - P.I. -  $\frac{5}{8}$ " square iron Fd. (bent) -  
straightened & re-set  
20°-14'-17" Rt.  
No Curve

C. Nichols  
C. Dill  
B. Simmons

Oct. 99

26



FB 711

Resurvey T.R. 285  
Washington Twp., Logan Co., Ohio

127+51.80 - Fd. & 1" head bolt (1' deep)

in 1981 while doing a survey of Chestnut Ave. this pt. was destroyed during sewer project (1985). Set a 5/8" dia. capped re-bar using 1981 notes - see next page for details.

181.92'

122+69.88 - Intersection E.S.R. 708 w/ the E of T.R. 285 - 5/8" dia. capped re-bar set.

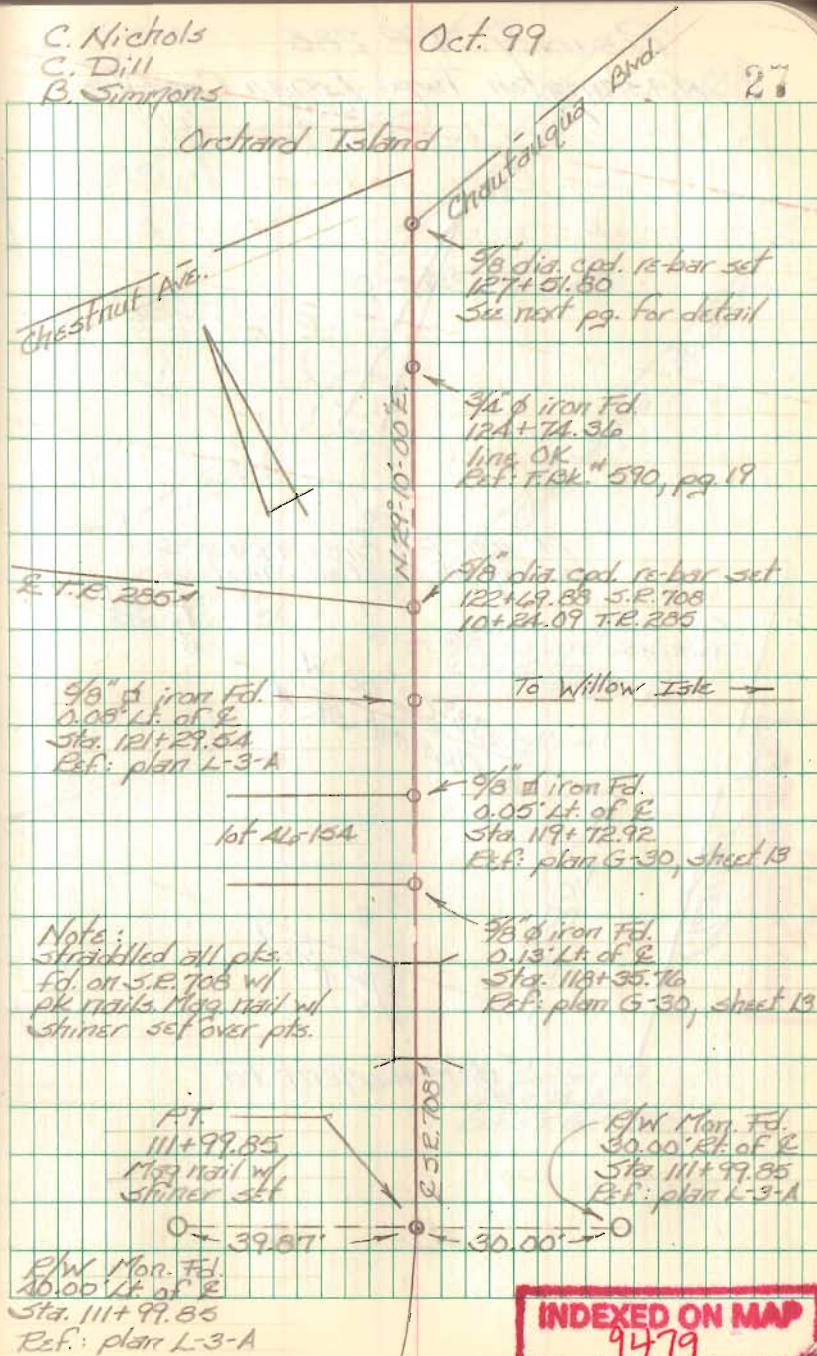
1070.03'

111+99.85 - P.T. - Set Mag nail w/ shiner between R/W monuments as shown.

C. Nichols  
C. Dill  
B. Simmons

Oct. 99

27

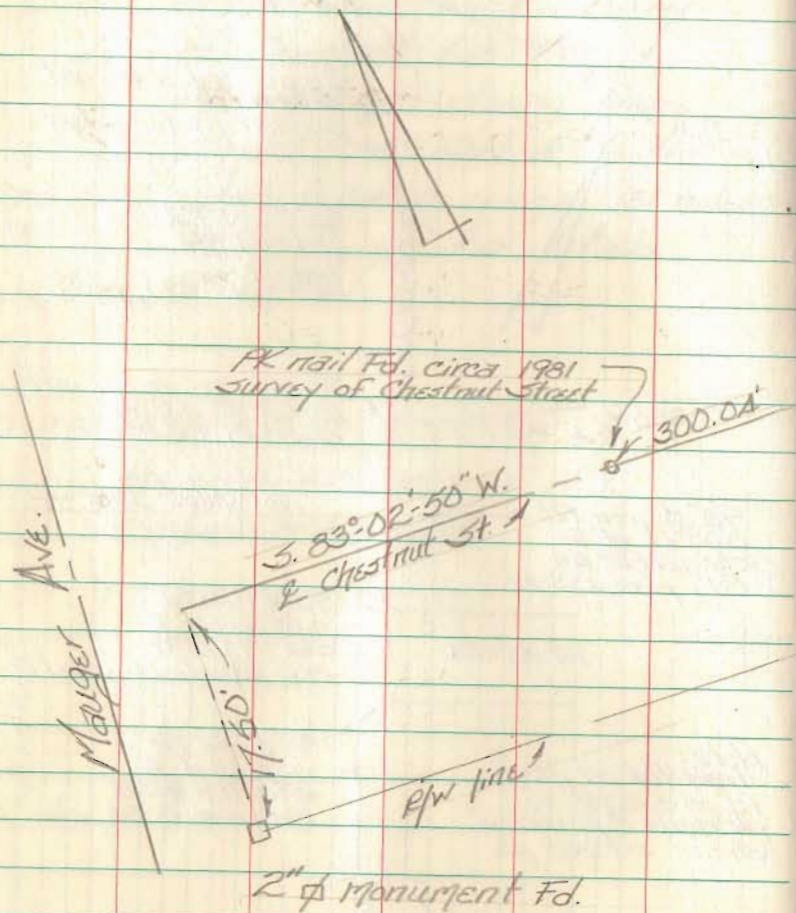


INDEXED ON MAP

9479

FB 711

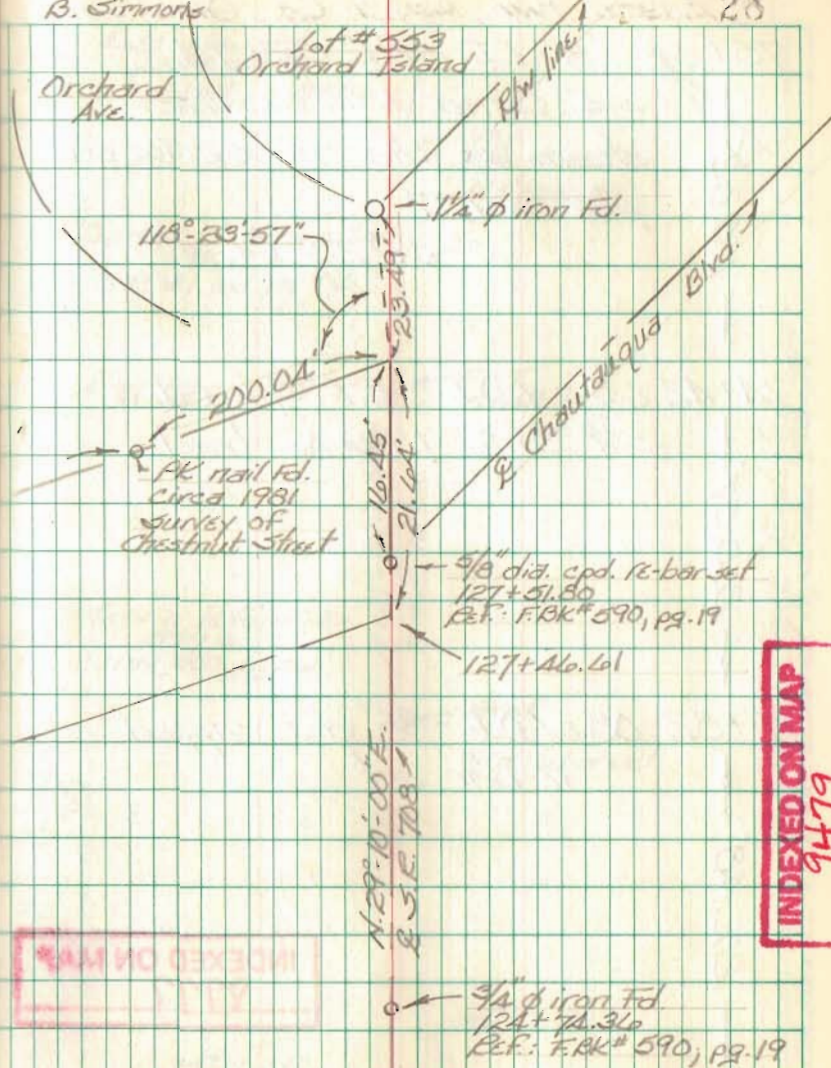
Resurvey T.R. 285  
Washington Twp., Logan Co., Ohio



C. Nichols  
C. Dill  
B. Sirmmons

Oct. 99

28



INDEXED ON MAP  
9479

INDEXED ON MAP

INDEXED ON MAP