

REC'D 12-1-94 gmy OK ✓



# Lee Surveying and Mapping Co.



Farm Surveys • Lot Surveys • Topography • Subdivisions • Construction Layout

143 EAST COLUMBUS AVENUE  
BELLEFONTAINE, OHIO 43311

(513) 593-7335

JEFFREY I. LEE, P.S.

## MARION W. RAPP 10.000 ACRES

Lying in Section 35, Town 3, Range 14, Washington Township, Logan County, Ohio.

Being out of the Marion Rapp 131.43 acre tract as deeded and described in Volume 234, Page 487 of the Logan County Records of Deeds and being more particularly described as follows:

Beginning at a railroad spike found at the intersection of center-lines of Township Road 207 and Township Road 33.

THENCE, with the center-line of Township Road 33, S 6°-50'-00" E, a distance of 574.86 feet to a 5/8 inch iron rod found.

THENCE, with the center-line of Township Road 33, S 4°-32'-41" W, a distance of 551.16 feet to a railroad spike set at the TRUE POINT OF BEGINNING.

THENCE, with the center-line of Township Road 33, S 4°-32'-41" W, a distance of 254.50 feet to a railroad spike set

THENCE, N 85°-27'-19" W, a distance of 1337.78 feet to a 5/8 inch iron rod set.

THENCE, N 2°-06'-26" E, a distance of 414.30 feet to a 5/8 inch iron rod set.

THENCE, N 89°-27'-08" E, a distance of 514.50 feet to a 5/8 inch iron rod set.


THENCE, S 2°-06'-26" W, a distance of 205.28 feet to a 5/8 inch iron rod set.

THENCE, S 85°-27'-19" E, a distance of 834.20 feet to the point of beginning.

Containing 10.000 acres of which 0.175 acre is within the highway right-of-way.

The basis for bearings is based upon the center-line of Township Road 33 at the intersection with Township Road 207 being S 6°-50'-00" E, and all other bearings are from angles and distances measured in a field survey by Lee Surveying and Mapping Company on November 11, 1994.

Description prepared by:

  
Jeffrey I. Lee  
Professional Surveyor 6359  
November 30, 1994

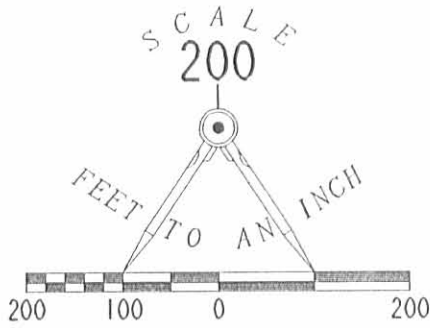


L 2242

ORIGINAL STAMP IN GREEN

8958 ID

REC'D 12-1-94 SML 01



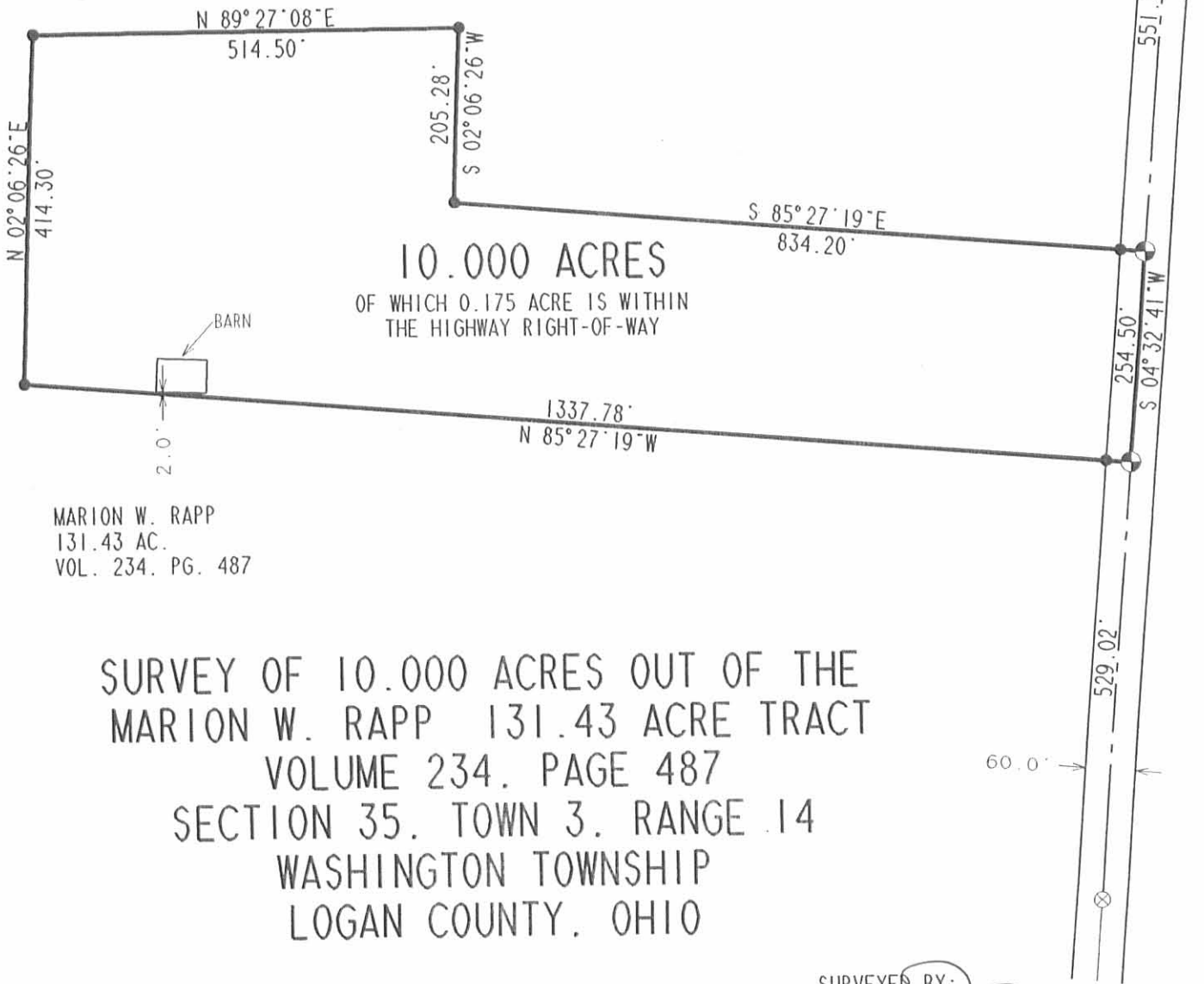
**LEGEND**

- ⊗ RAILROAD SPIKE FOUND
- 5/8" I. ROD FOUND
- ⊕ RAILROAD SPIKE SET
- 5/8" I. ROD SET

**REFERENCES**

LOGAN COUNTY ENGINEER'S MAP ROOM.  
DRAWER "R". FILE NUMBERS 1657. 7875.  
AND 8323.

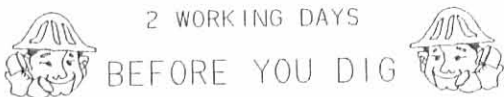
MARION W. RAPP  
131.43 AC.  
VOL. 234. PG. 487



MARION W. RAPP  
131.43 AC.  
VOL. 234. PG. 487

SURVEY OF 10.000 ACRES OUT OF THE  
MARION W. RAPP 131.43 ACRE TRACT  
VOLUME 234. PAGE 487  
SECTION 35. TOWN 3. RANGE 14  
WASHINGTON TOWNSHIP  
LOGAN COUNTY. OHIO

INDEXED ON MAP  
8958 IP



CALL TOLL FREE 800-362-2764  
OHIO UTILITIES PROTECTION SERVICE.



ORIGINAL STAMP IN GREEN

SURVEYED BY:

JEFFREY I. LEE  
PROFESSIONAL SURVEYOR 6359  
NOVEMBER 11, 1994

LEE SURVEYING & MAPPING CO  
143 East Columbus Avenue  
BELLEFONTAINE, OHIO 43311  
(513) 593-7335

D 249 MWRAPP

L 2242-4



# Lee Surveying and Mapping Co.



Farm Surveys • Lot Surveys • Topography • Subdivisions • Construction Layout

143 EAST COLUMBUS AVENUE  
BELLEFONTAINE, OHIO 43311

(513) 593-7335

JEFFREY I. LEE, P.S.

## MARION W. RAPP 122.466 ACRES

Lying in Sections 34 and 35, Town 3, Range 14, Washington Township, Logan County, Ohio.

Being out of the Marion Rapp 131.43 acre tract as deeded and described in Volume 234, Page 487 of the Logan County Records of Deeds and being more particularly described as follows:

Beginning at an axle on end found at the intersection of center-lines of Township Road 207 and Township Road 33.

THENCE, with the center-line of Township Road 33 (60 feet wide), S 6°-50'-00" E, a distance of 574.86 feet to a 5/8 inch iron rod found.

THENCE, continuing with the center-line of Township Road 33, S 4°-32'-41" W, a distance of 551.16 feet to a railroad spike set.

THENCE, N 85°-27'-19" W, a distance of 834.20 feet to a 5/8 inch iron rod set.

THENCE, N 2°-06'-26" E, a distance of 205.28 feet to a 5/8 inch iron rod set.

THENCE, S 89°-27'-08" W, a distance of 514.50 feet to a 5/8 inch iron rod set.

THENCE, S 2°-06'-26" W, a distance of 414.30 feet to a 5/8 inch iron rod set.

THENCE, S 85°-27'-19" E, a distance of 1337.78 feet to a railroad spike set.

THENCE, with the center-line of Township Road 33, S 4°-32'-41" W, a distance of 1249.57 feet to a railroad spike set on the line between Sections 34 and 35.

THENCE, continuing with the center-line of Township Road 33, S 4°-32'-41" W, a distance of 223.27 feet to a railroad spike set

THENCE, with the north line of the Donald L. James 59.0 acre tract (O.R. 93, Pg. 840, Tr. II), N 84°-45'-38" W, a distance of 2054.91 feet to a 5/8 inch iron rod set.

THENCE, with the north-south quarter section line of Section 34 and the east line of the Donald L. James 260.0 acre tract (O.R. 93, Pg. 840, Tr. I), N 5°-17'-49" E, a distance of 211.82 feet to a 5/8 inch iron rod set on the line between Sections 34 and 35.


THENCE, with the north-south quarter section line of Section 35 and continuing with the east line of the said 260.0 acre tract, and the east line of the Marvin Swonguer 72.0 acre tract (O.R. 171, Pg. 635), N 4°-59'-47" E, a distance of 2628.69 feet to a PK nail found.

THENCE, with the east-west quarter section line and the center-line of Township Road 207, (40 feet wide), S 84°-45'-38" E, a distance of 1918.00 feet to the point of beginning.

Containing 122.466 acres of which there is the following acreage breakdown:  
112.211 acres are in Section 35 with 2.504 acres within the highway rights-of-way.  
10.255 acres are in Section 34 with 0.154 acre within the highway right-of-way.

The basis for bearings is based upon the center-line of Township Road 33 at the intersection with Township Road 207 being S 6°-50'-00" E, and all other bearings are from angles and distances measured in a field survey by Lee Surveying and Mapping Company on January 9, 1995.

Description prepared by:

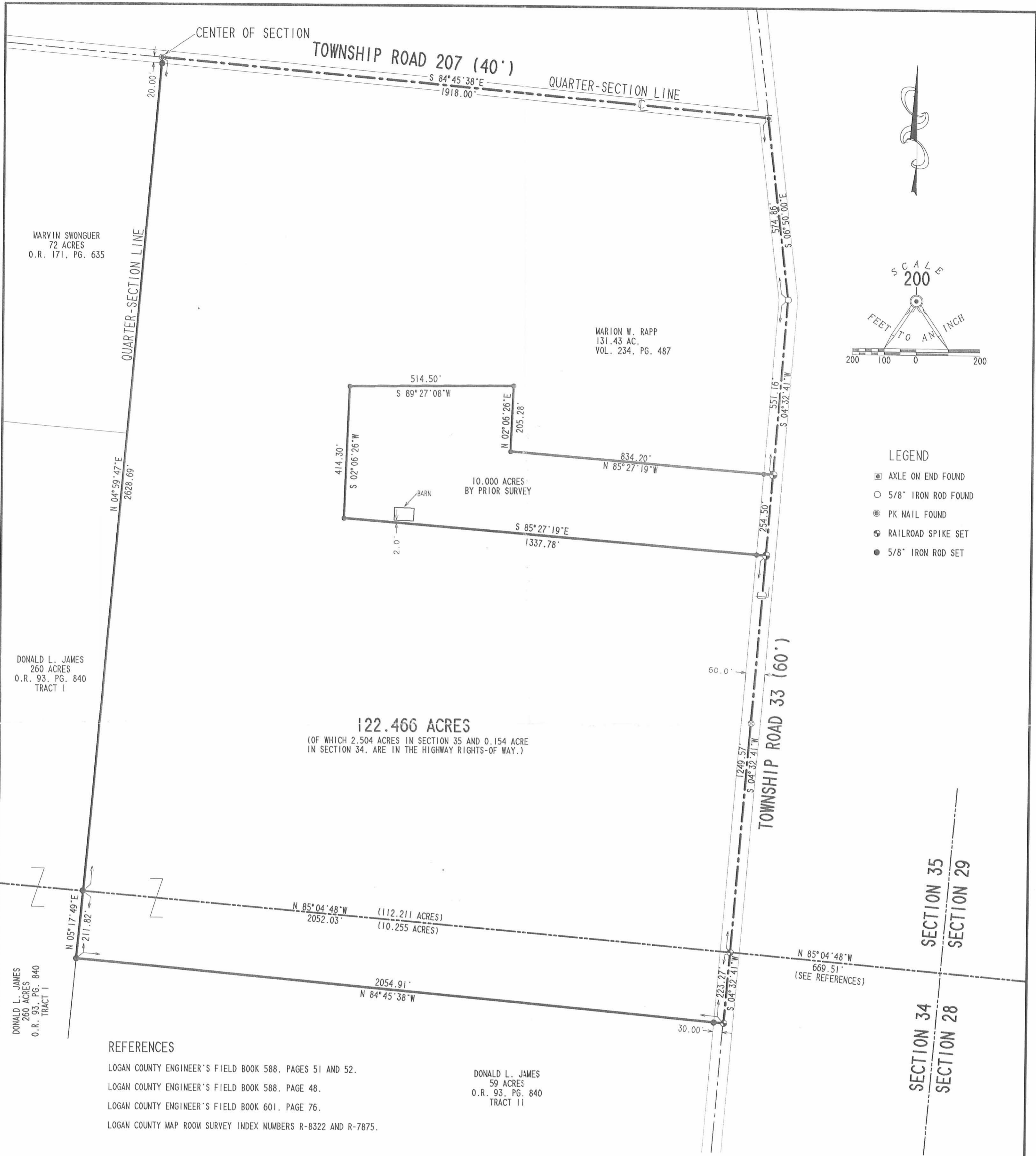
  
Jeffrey I. Lee  
Professional Surveyor 6359  
January 15, 1995



L 2242

ORIGINAL STAMP IN GREEN

INDEXED ON MAP  
8958 2D



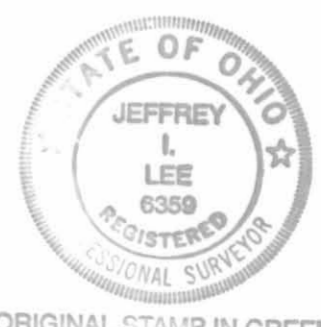
- LEGEND**
- ☐ AXLE ON END FOUND
  - 5/8" IRON ROD FOUND
  - PK NAIL FOUND
  - ⊕ RAILROAD SPIKE SET
  - 5/8" IRON ROD SET

**122.466 ACRES**  
 (OF WHICH 2.504 ACRES IN SECTION 35 AND 0.154 ACRE IN SECTION 34, ARE IN THE HIGHWAY RIGHTS-OF-WAY.)

- REFERENCES**
- LOGAN COUNTY ENGINEER'S FIELD BOOK 588, PAGES 51 AND 52.
  - LOGAN COUNTY ENGINEER'S FIELD BOOK 588, PAGE 48.
  - LOGAN COUNTY ENGINEER'S FIELD BOOK 601, PAGE 76.
  - LOGAN COUNTY MAP ROOM SURVEY INDEX NUMBERS R-8322 AND R-7875.

DONALD L. JAMES  
 59 ACRES  
 O.R. 93, PG. 840  
 TRACT II

**SURVEY OF 122.466 ACRES OUT OF THE  
 MARION W. RAPP, 131.43 ACRE TRACT  
 VOLUME 234, PAGE 487  
 SECTIONS 34 AND 35, TOWN 3, RANGE 14  
 WASHINGTON TOWNSHIP  
 LOGAN COUNTY  
 OHIO**



SURVEYED BY:  
  
 JEFFREY I. LEE  
 PROFESSIONAL SURVEYOR 6359  
 JANUARY 13, 1995  
**LEE SURVEYING & MAPPING CO.**  
 143 East Columbus Avenue  
 BELLEFONTAINE, OHIO 43311  
 (513) 593-7335

2 WORKING DAYS  
**BEFORE YOU DIG**  
 CALL TOLL FREE **800-362-2764**  
 OHIO UTILITIES PROTECTION SERVICE.

ORIGINAL STAMP IN GREEN D253 MRAPP2 L 2242-2

INDEXED ON MAP  
 8958 2P