

Stoto River

478° 30' E 779 pole

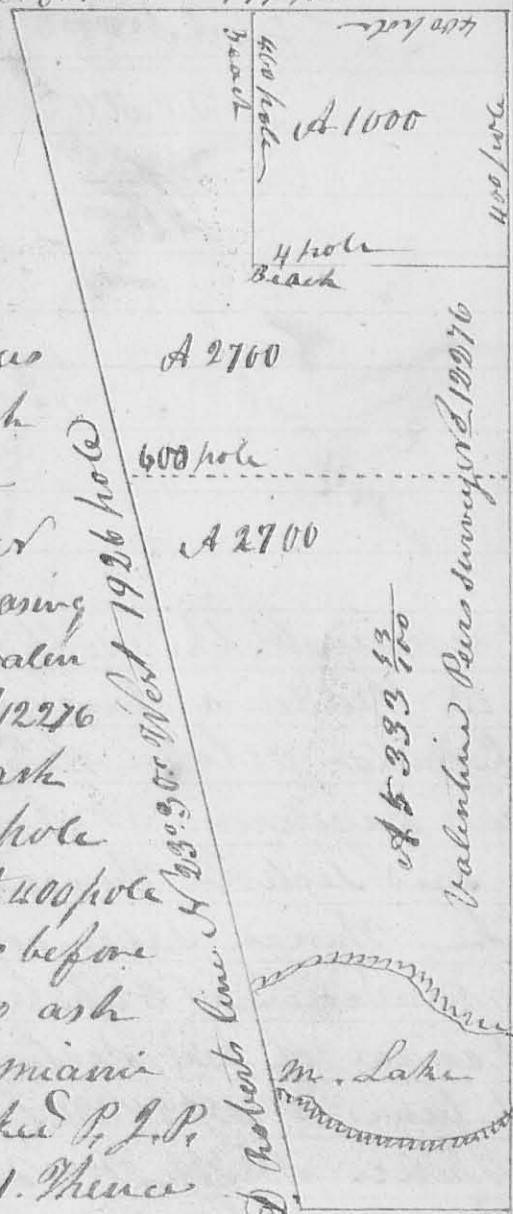
Surveyed for Mauris Ganshaw October 14<sup>th</sup> 1839 Military Survey No 12276 on Roberts line as follows

Beginning At an ash tree in Roberts line See letter at There is a 78° 30' East 779 pole passing a Beach corner to valen - time per survey No 12276 at 379 pole to two ash thence S 11° 30' E 1876 pole passing a detached at 400 pole corner to survey as before to a beach and two ash on the side of the Miami River. Beach marked P. J. P. And H. J. P. Date 1831. Thence S 78° 30' W 330 pole to an ash maple and Elm in Roberts line Thence With Roberts line N 23° 30' W 1926 pole to the beginning containing 5400 acres L. S. Optum. S. J. C. John Abel Deputy

Variation on Roberts line 60° East the other 30° East

466

8461



B. Survey No 1030 East 1876 pole

A. J. M. Survey

A scale of 400 pole to the inch

Note the dotted line represents the division line between Latham and Herps J. A. D. P.

INDEXED ON MAP  
8461 1D

8461

Survey No. 688 ~~Surveyed~~ Surveyed Nov. 1-2<sup>nd</sup> 1849 for George Spence assignee of Jacob Harner assignee of Elisha Mulford part of Military Entry No. 12276 on the Miami River forfeited to the state in the name of Luke Still in the year 1844 and sold to said Mulford in the year 1845. Beginning at two large Maples and a Cottonwood in Roberts' line N.W. corner of a tract of land sold by Allen Satham to Jasper Plyly thence with Plyly's line N 78° E 464 poles to an Ash, Lym and Large Elm, N.E. corner to Plyly; thence N 12° W. 135 poles to two Syc- ashes and a Hornbeam; thence S 78° W 486 poles crossing a small Lake at 286 poles to an Ash, Maple, and Elm, in Roberts' line thence with said line S 34° E 145 poles to place of beginning containing 400 3/4 Acres.

Cyrus Cherry }  
 Abram Cherry } C.C.  
 Jacob Harner M.H.

INDEXED ON MAP  
 8461 2D

O. Hayes Sur. Secy

8581

Survey No. 689 ~~Surveyed~~ Surveyed Jan. 13. 1850 for Peter Detrich two lots of land one to Felix Mowry and the other for David Detrich For Mowry as follows Beginning at a Stake at the S.W. corner of the N.E. q. of Section No. 8 T. 3. R. 14. thence from which a White Oak 20 S. E. bears N 84 1/2° E 26 links distant; thence N 10° E 57 poles to a stake in a prairie; thence S 89° E 37 1/2 poles to another