

Received 3-1-88

RICHARD A. BRUCE, P.E., P.S.
Registered Land Surveyor No. 6993

513/465 - 7412

Bruce Land Surveying
4293 Road 171, West Liberty, Ohio 43357



HANGER SURVEY
S. 36, T. 3, R. 14
WASHINGTON TOWNSHIP
LOGAN COUNTY, OHIO

The following described real estate situated in the State of Ohio, County of Logan, Township of Washington, being part of the northwest quarter of Section 36, Town 3, Range 14 and more particularly described as follows:

Beginning at a monument found at the northwest corner of Section 36, Town 3, Range 14, said monument being in the center of Township Road 214.

THENCE with the north line of said Section 36, S.84°20'53"E. 461.99 feet to an angle iron corner post.

THENCE S.5°00'W. 471.47 feet to a 5/8 inch iron set.

THENCE N.84°20'53"W. 461.99 feet to a railroad spike set in the west line of said Section 36, also the center of Township Road 214, passing a 5/8 inch iron set at 441.99 feet.

THENCE with the west line of said Section 36, also the center of Township Road 214, N.5°00'E. 471.47 feet to the point of beginning.

Containing 5.000 acres, more or less.

The above described 5.000 acre tract being part of Jesse and Mellicent Hanger's 85.42 acre tract as described in D.B. 324, Page 184.

Basis for Bearings: Centerline T.R. 214 (N.5°00'E.)

This description prepared from an actual field survey.

Prepared by:

Richard A. Bruce

Richard A. Bruce, P.E., P.S.
Reg. Surveyor No. 6993
February 28, 1989



INDEXED ON MAP
788910

DARREL C. & BETTY J. CUMMINS.
D.B. 206, PG. 149
79.77 AC.

SEC. 31, T. 2, R. 15

ANGLE IRON
CORNER POST

S. 84° 20' 53" E.

461.99'

SECTION LINE

P.O.B.

MONUMENT FND.

● 5/8" ϕ IRON SET

(BASIS FOR BEARINGS)

T.R. 214

N. 5° 00' E.

471.47'

5.00 AC.

471.47'

S. 5° 00' W.

SCALE: 1" = 100'

REFERENCES:

1326

1727

RR SPK.
SET

20.00'

461.99'

N. 84° 20' 53" W.

JESSE & MELLICENT HANGER
D.B. 324, PG. 184
85.42 AC.

SEC. 36, T. 3, R. 14



INDEXED ON MAP
78891P

HANGER SURVEY
SEC. 36, T. 3, R. 14
WASHINGTON TOWNSHIP
LOGAN COUNTY, OHIO

BY: Richard A. Bruce
RICHARD A. BRUCE
REG. SURV. NO. 6993
FEBRUARY 28, 1989



Lee Surveying and Mapping Co., Inc.



Farm Surveys • Lot Surveys • Topography • Subdivisions • Construction Layout

117 NORTH MADRIVER STREET
BELLEFONTAINE, OHIO 43311

(937) 593-7335
FAX (937) 593-7444

HANGER 5.100 ACRES

Lying in Section 36, Town 3, Range 14, Washington Township, Logan County, Ohio.

Being out of the Jesse Hanger original 68.90 acre tract, and original 16.52 acre tract as deeded and described in Volume 324, Page 183, tracts I and II of the Logan County Records of Deeds and being more particularly described as follows:

Beginning at a 3/4 iron pipe found at the southwest corner of the northwest quarter of Section 36 and at the intersection of center-lines of Township Road 214 and County Highway 13.

THENCE, with the south line of the northwest quarter of Section 36 and the center-line of County Highway 13, (60 feet wide), S 85°-26'-00" E, a distance of 1349.00 feet to a railroad spike set at the TRUE POINT OF BEGINNING.

THENCE, with the east line of the Patricia A. Barnett 34.5 acre tract, (Vol. 405, Pg. 306), N 4°-00'-00" E, a distance of 1138.56 feet to a 5/8 inch iron rod set, passing a 5/8 inch iron rod set at 30.00 feet.

THENCE, with the north line of the said 34.5 acre tract, N 85°-26'-00" W, a distance of 184.00 feet to a 5/8 inch iron rod set.

THENCE, N 0°-16'-17" W, a distance of 627.98 feet to a 5/8 inch iron rod set.

THENCE, S 88°-00'-00" E, a distance of 336.00 feet to a 5/8 inch iron rod set.

THENCE, S 3°-25'-00" W, a distance of 491.00 feet to a 5/8 inch iron rod set.

THENCE, N 85°-26'-00" W, a distance of 80.04 feet to a 5/8 inch iron rod set.

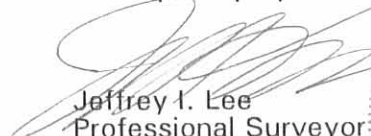
THENCE, S 4°-00'-00" W, a distance of 1288.45 feet to a MAG nail set on the south line of the northwest quarter of Section 36 and on the center-line of County Highway 13, passing a 5/8 inch iron rod set at 1258.45 feet.

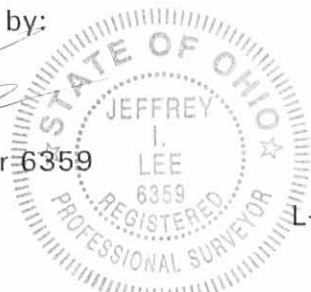
THENCE, with the south line of the northwest quarter of Section 36 and the center-line of County Highway 13, N 85°-26'-00" W, a distance of 30.00 feet to the point of beginning.

Containing 5.100 acres, of which, 0.021 acre is within the highway right-of-way.

The basis for bearings is the south line of the northwest quarter of Section 36 being S 85°-26'-00" E, and all other bearings are from angles and distances measured in a field survey by Lee Surveying and Mapping Co., Inc. on January 27, 1998.

Description prepared by:

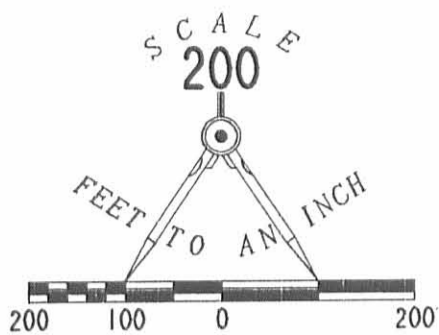

Jeffrey I. Lee
Professional Surveyor 6359
January 27, 1998



L-2612

ORIGINAL STAMP IN GREEN

7889 2D



- LEGEND**
- 5/8" IRON ROD SET
 - ⊙ MAG NAIL SET
 - 3/4" IRON PIPE FOUND
 - ⊕ RAIL ROAD SPIKE SET

REFERENCES
 LOGAN COUNTY ENGINEERS FILES:
 FIELD BOOK 598 PAGE 50, 51, AND 52
 X-13

JESSE HANGER
 68.90 ACRES
 VOL. 324, PG. 183
 TRACT I

JESSE HANGER
 68.90 ACRES
 VOL. 324, PG. 183
 TRACT I

PATRICIA A. BARNETT
 34.5 ACRES
 VOL. 405, PG. 306

JESSE HANGER
 16.52 ACRES
 VOL. 324, PG. 183
 TRACT II

**SURVEY OF 5.100 ACRES OUT OF THE
 JESSE HANGER AND MELLICENT HANGER
 68.90 ACRE, TRACT, AND THE 16.52 ACRE, TRACT
 VOLUME 324, PAGE 183, TRACTS I AND II
 SECTION 36, TOWN 3, RANGE 14
 WASHINGTON TOWNSHIP, LOGAN COUNTY, OHIO**

SURVEYED BY:

Jeffrey I. Lee
 JEFFREY I. LEE
 PROFESSIONAL SURVEYOR 6359
 JANUARY 27, 1998



ORIGINAL STAMP IN GREEN

COPYRIGHT 1998 BY:
LEE SURVEYING & MAPPING CO., INC.
 117 North Madriver Street
 BELLEFONTAINE, OHIO 43311
 (937) 593-7335

2 WORKING DAYS
BEFORE YOU DIG
 CALL TOLL FREE **800-362-2764**
 OHIO UTILITIES PROTECTION SERVICE.

7889 2P

REC'D 3-25-98 SWJ OKV
Revised Copy



Lee Surveying and Mapping Co., Inc.



Farm Surveys • Lot Surveys • Topography • Subdivisions • Construction Layout

117 NORTH MADRIVER STREET
BELLEFONTAINE, OHIO 43311

(937) 593-7335
FAX (937) 593-7444

HANGER 5.100 ACRES

Lying in Section 36, Town 3, Range 14, Washington Township, Logan County, Ohio.

Being out of the Jesse Hanger original 68.90 acre tract, and original 16.52 acre tract as deeded and described in Volume 324, Page 183, tracts I and II of the Logan County Records of Deeds and being more particularly described as follows:

Beginning at a 3/4 iron pipe found at the southwest corner of the northwest quarter of Section 36 and at the intersection of center-lines of Township Road 214 and County Highway 13.

THENCE, with the south line of the northwest quarter of Section 36 and the center-line of County Highway 13, (60 feet wide), S 85°-26'-00" E, a distance of 1349.00 feet to a railroad spike set at the TRUE POINT OF BEGINNING.

THENCE, with the east line of the Dennis E. Stryker 34.5 acre tract, (Vol. 405, Pg. 308), N 4°-00'-00" E, a distance of 1138.56 feet to a 5/8 inch iron rod set, passing a 5/8 inch iron rod set at 30.00 feet.

THENCE, with the north line of the said 34.5 acre tract, N 85°-26'-00" W, a distance of 184.00 feet to a 5/8 inch iron rod set.

THENCE, N 0°-16'-17" W, a distance of 627.98 feet to a 5/8 inch iron rod set.

THENCE, S 88°-00'-00" E, a distance of 336.00 feet to a 5/8 inch iron rod set.

THENCE, S 3°-25'-00" W, a distance of 491.00 feet to a 5/8 inch iron rod set.

THENCE, N 85°-26'-00" W, a distance of 80.04 feet to a 5/8 inch iron rod set.

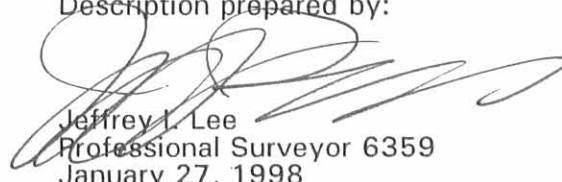
THENCE, S 4°-00'-00" W, a distance of 1288.45 feet to a MAG nail set on the south line of the northwest quarter of Section 36 and on the center-line of County Highway 13, passing a 5/8 inch iron rod set at 1258.45 feet.

THENCE, with the south line of the northwest quarter of Section 36 and the center-line of County Highway 13, N 85°-26'-00" W, a distance of 30.00 feet to the point of beginning.

Containing 5.100 acres, of which, 0.021 acre is within the highway right-of-way.

The basis for bearings is the south line of the northwest quarter of Section 36 being S 85°-26'-00" E, and all other bearings are from angles and distances measured in a field survey by Lee Surveying and Mapping Co., Inc. on January 27, 1998.

Description prepared by:


Jeffrey I. Lee
Professional Surveyor 6359
January 27, 1998

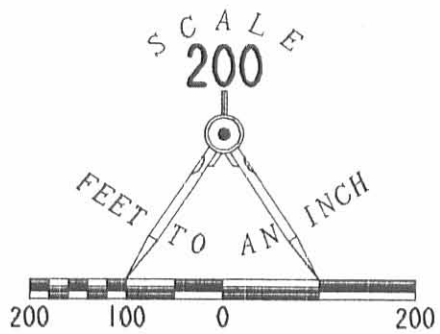
Revised March 25, 1998

L-2612



ORIGINAL STAMP IN GREEN

3D ON MAP
7889 3D



JESSE HANGER
68.90 ACRES
VOL. 324, PG. 183
TRACT I

JESSE HANGER
68.90 ACRES
VOL. 324, PG. 183
TRACT I

LEGEND

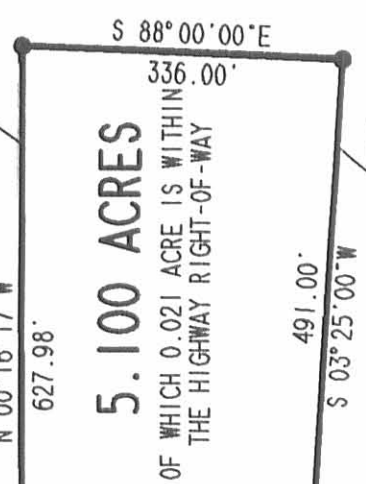
- 5/8" IRON ROD SET
- ⊙ MAG NAIL SET
- 3/4" IRON PIPE FOUND
- ⊕ RAILROAD SPIKE SET

REFERENCES

LOGAN COUNTY ENGINEERS FILES:
FIELD BOOK 598 PAGE 50, 51, AND 52
X-13

TOWNSHIP ROAD 214

SECTION 6, TOWN 2, RANGE 14
SECTION 36, TOWN 3, RANGE 14



4.301 ACRES
OUT OF TRACT I

80.04'
N 85° 26' 00" W

184.00'
N 85° 26' 00" W

30.00'

DENNIS E. STRYKER
34.5 ACRES
VOL. 405, PG. 308

0.799 ACRES OUT
OF TRACT II

JESSE HANGER
16.52 ACRES
VOL. 324, PG. 183
TRACT II

1138.56' N 04° 00' 00" E
1288.45' S 04° 00' 00" W

1349.00'
S 85° 26' 00" E (BASIS FOR BEARINGS)
COUNTY HIGHWAY 13

QUARTER SECTION LINE

N 85° 26' 00" W
30.00'

SURVEY OF 5.100 ACRES OUT OF THE
JESSE HANGER AND MELLICENT HANGER
68.90 ACRE, TRACT, AND THE 16.52 ACRE, TRACT
VOLUME 324, PAGE 183, TRACTS I AND II
SECTION 36, TOWN 3, RANGE 14
WASHINGTON TOWNSHIP, LOGAN COUNTY, OHIO

SURVEYED BY:

Jeffrey T. Lee
JEFFREY T. LEE
PROFESSIONAL SURVEYOR 6359
JANUARY 27, 1998

Revised March 25, 1998
COPYRIGHT 1998 BY:

LEE SURVEYING & MAPPING CO., INC.
117 North Madriver Street
BELLEFONTAINE, OHIO 43311
(937) 593-7335



ORIGINAL STAMP IN GREEN

INDEXED ON MAP
7889 3P

2 WORKING DAYS
BEFORE YOU DIG
CALL TOLL FREE **800-362-2764**
OHIO UTILITIES PROTECTION SERVICE.

REC'D 2-17-98 SMY ML ✓

SEE REVISED COPY



Lee Surveying and Mapping Co., Inc.



Farm Surveys • Lot Surveys • Topography • Subdivisions • Construction Layout

117 NORTH MADRIVER STREET
BELLEFONTAINE, OHIO 43311

(937) 593-7335
FAX (937) 593-7444

HANGER 37.755 ACRES

Lying in Section 36, Town 3, Range 14, Washington Township, Logan County, Ohio.

Being out of the Jesse Hanger and Mellicent Hanger original 68.90 acre tract as deeded and described in Volume 324, Page 183, Tract I of the Logan County Records of Deeds and being more particularly described as follows:

Beginning at a 3/4 inch iron pipe found on the southwest corner of the northwest quarter of Section 36, Town 3, Range 14, on the center-line of Township Road 214 at the intersection with the center-line of County Highway 13.

THENCE, with the west line of Section 36 and the center-line of Township Road 214 (33 feet wide), N 4°-33'-00" E a distance of 1138.50 feet to a railroad spike set at the TRUE POINT OF BEGINNING.

THENCE, with the west line of Section 36 and the center-line of Township Road 214, N 4°-33'-00" E, a distance of 1075.40 feet to a railroad spike found at the southwest corner of the Greg Jenkins 5.000 acre tract, (O.R. 82, Pg. 94).

THENCE, with the lines of the said 5.000 acre tract, the following two (2) courses:

S 84°-48'-34" E, a distance of 462.02 feet to a 5/8 inch iron rod found, passing a 5/8 inch iron rod set at 16.50 feet.

N 4°-32'-49" E, a distance of 471.43 feet to a 4 inch angle iron post found on the north line of Section 36.

THENCE, with the north line of Section 36 and the south line of the Betty Jean Cummins original 45.464 acre tract (O.R. 317, Pg. 264), S 84°-49'-48" E, a distance of 756.33 feet to a 5/8 inch iron rod set.

THENCE, S 2°-25'-00" E, a distance of 482.15 feet to a 5/8 inch iron rod set.

THENCE, S 2°-00'-00" W, a distance of 421.53 feet to a 5/8 inch iron rod set.

THENCE, N 88°-00'-00" W, a distance of 194.39 feet to a 5/8 inch iron rod set.

THENCE, S 0°-16'-17" E, a distance of 627.98 feet to a 5/8 inch iron rod set on the north line of the Patricia A. Barnett 34.5 acre tract, (Vol. 405, Pg. 306).

THENCE, with the north line of the said 34.5 acre tract, N 85°-26'-00" W, a distance of 1154.07 feet the point of beginning, passing a 5/8 inch iron rod set at 1137.57 feet.

Containing 37.755 acres, of which 0.407 acre is within the highway right-of-way.

The basis for bearings is the center-line of County Highway 13, being S 85°-26'-00" E, and all other bearings are from angles and distances measured in a field survey by Lee Surveying and Mapping Co., Inc. on February 5, 1998.

Description prepared by:



Jeffrey I. Lee
Professional Surveyor 6359
February 14, 1998



L-2612

ORIGINAL STAMP IN GREEN

7889 4D-1

REC'D 2-23-98 SWJ ALV



Lee Surveying and Mapping Co., Inc.



Farm Surveys • Lot Surveys • Topography • Subdivisions • Construction Layout

117 NORTH MADRIVER STREET
BELLEFONTAINE, OHIO 43311

(937) 593-7335
FAX (937) 593-7444

HANGER 37.263 ACRES

Lying in Section 36, Town 3, Range 14, Washington Township, Logan County, Ohio.

Being part of the Jesse Hanger and Mellicent Hanger original 16.52 acre tract and original 68.90 acre tract as deeded and described in Volume 324, Page 183, Tracts II and I of the Logan County Records of Deeds and being more particularly described as follows:

Beginning at a 3/4 inch iron pipe found on the southwest corner of the northwest quarter of Section 36, Town 3, Range 14, on the center-line of Township Road 214 at the intersection with the center-line of County Highway 13.

THENCE, with the center-line of County Highway 13, (60 feet wide), S 85°-26'-00" E, a distance of 1379.00 feet to a MAG nail set at the TRUE POINT OF BEGINNING.

THENCE, N 4°-00'-00" E, a distance of 1288.45 feet to a 5/8 inch iron rod set, passing a 5/8 inch iron rod set at 30.00 feet.

THENCE, S 85°-26'-00" E, a distance of 80.04 feet to a 5/8 inch iron rod set.

THENCE, N 3°-25'-00" E, a distance of 491.00 feet to a 5/8 inch iron rod set.

THENCE, N 88°-00'-00" W, a distance of 141.61 feet to a 5/8 inch iron rod set.

THENCE N 2°-00'-00" E, a distance of 421.53 feet to a 5/8 inch iron rod set.

THENCE, N 2°-25'-00" W, a distance of 482.15 feet to a 5/8 inch iron rod set on the north line of Section 36.

THENCE, with the north line of Section 36 and the south line of the Betty Jean Cummins original 45.464 acre tract (O.R. 317, Pg. 264), S 84°-49'-48" E, a distance of 730.66 feet to a 15 inch concrete post found on the northwest corner of the John W. Hurley original 129.76 acre tract, (O.R. 264, Pg. 925).

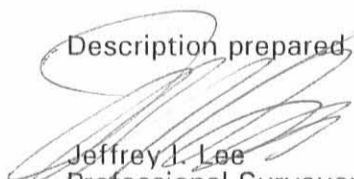
THENCE, with the west line of the said 129.76 acre tract, S 4°-09'-55" W, a distance of 2665.00 feet to a railroad spike set on the center-line of County Highway 13, passing a 5/8 inch iron rod set at 2633.00 feet.

THENCE, with the center-line of County Highway 13, N 85°-26'-00" W, a distance of 587.76 feet to the point of beginning.

Containing 37.263 acres, of which 21.560 acre is out of Tract I, and 15.703 acre is out of Tract II with 0.405 acre within the highway right-of-way.

The basis for bearings is the center-line of County Highway 13, being S 85°-26'-00" E, and all other bearings are from angles and distances measured in a field survey by Lee Surveying and Mapping Co., Inc. on February 5, 1998.

Description prepared by:


Jeffrey J. Lee
Professional Surveyor 6359
February 14, 1998



L-2612

INDEXED ON MAP
7889 402

REC'D 3-24-98 Jeff AK ✓
- Revised Copy



Lee Surveying and Mapping Co., Inc.



Farm Surveys • Lot Surveys • Topography • Subdivisions • Construction Layout

117 NORTH MADRIVER STREET
BELLEFONTAINE, OHIO 43311

(937) 593-7335
FAX (937) 593-7444

HANGER 37.263 ACRES

Lying in Section 36, Town 3, Range 14, Washington Township, Logan County, Ohio.

Being part of the Jesse Hanger and Mellicent Hanger original 16.52 acre tract and original 68.90 acre tract as deeded and described in Volume 324, Page 183, Tracts II and I of the Logan County Records of Deeds and being more particularly described as follows:

Beginning at a 3/4 inch iron pipe found on the southwest corner of the northwest quarter of Section 36, Town 3, Range 14, on the center-line of Township Road 214 at the intersection with the center-line of County Highway 13.

THENCE, with the center-line of County Highway 13, (60 feet wide), S 85°-26'-00" E, a distance of 1379.00 feet to a MAG nail set at the TRUE POINT OF BEGINNING.

THENCE, N 4°-00'-00" E, a distance of 1288.45 feet to a 5/8 inch iron rod set, passing a 5/8 inch iron rod set at 30.00 feet.

THENCE, S 85°-26'-00" E, a distance of 80.04 feet to a 5/8 inch iron rod set.

THENCE, N 3°-25'-00" E, a distance of 491.00 feet to a 5/8 inch iron rod set.

THENCE, N 88°-00'-00" W, a distance of 141.61 feet to a 5/8 inch iron rod set.

THENCE N 2°-00'-00" E, a distance of 421.53 feet to a 5/8 inch iron rod set.

THENCE, N 2°-25'-00" W, a distance of 482.15 feet to a 5/8 inch iron rod set on the north line of Section 36.

THENCE, with the north line of Section 36 and the south line of the Betty Jean Cummins original 45.464 acre tract (O.R. 317, Pg. 264), S 84°-49'-48" E, a distance of 730.66 feet to a 15 inch concrete post found on the northwest corner of the John W. Hurley original 129.76 acre tract, (O.R. 264, Pg. 925).

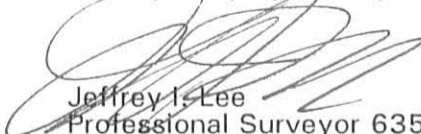
THENCE, with the west line of the said 129.76 acre tract, S 4°-09'-55" W, a distance of 2665.00 feet to a railroad spike set on the center-line of County Highway 13, passing a 5/8 inch iron rod set at 2633.00 feet.

THENCE, with the center-line of County Highway 13, N 85°-26'-00" W, a distance of 587.76 feet to the point of beginning.

Containing 37.263 acres, of which 21.560 acre is out of Tract I, and 15.703 acre is out of Tract II with 0.405 acre within the highway right-of-way.

The basis for bearings is the center-line of County Highway 13, being S 85°-26'-00" E, and all other bearings are from angles and distances measured in a field survey by Lee Surveying and Mapping Co., Inc. on February 5, 1998.

Description prepared by:


Jeffrey I. Lee
Professional Surveyor 6359
February 14, 1998
Revised March 25, 1998



ORIGINAL STAMP IN GREEN

L-2612





Lee Surveying and Mapping Co., Inc.



Farm Surveys • Lot Surveys • Topography • Subdivisions • Construction Layout

117 NORTH MADRIVER STREET
BELLEFONTAINE, OHIO 43311

(937) 593-7335
FAX (937) 593-7444

HANGER 37.755 ACRES

Lying in Section 36, Town 3, Range 14, Washington Township, Logan County, Ohio.

Being out of the Jesse Hanger and Mellicent Hanger original 68.90 acre tract as deeded and described in Volume 324, Page 183, Tract I of the Logan County Records of Deeds and being more particularly described as follows:

Beginning at a 3/4 inch iron pipe found on the southwest corner of the northwest quarter of Section 36, Town 3, Range 14, on the center-line of Township Road 214 at the intersection with the center-line of County Highway 13.

THENCE, with the west line of Section 36 and the center-line of Township Road 214 (33 feet wide), N 4°-33'-00" E a distance of 1138.50 feet to a railroad spike set at the TRUE POINT OF BEGINNING.

THENCE, with the west line of Section 36 and the center-line of Township Road 214, N 4°-33'-00" E, a distance of 1075.40 feet to a railroad spike found at the southwest corner of the Greg Jenkins 5.000 acre tract, (O.R. 82, Pg. 94).

THENCE, with the lines of the said 5.000 acre tract, the following two (2) courses:

S 84°-48'-34" E, a distance of 462.02 feet to a 5/8 inch iron rod found, passing a 5/8 inch iron rod set at 16.50 feet.

N 4°-32'-49" E, a distance of 471.43 feet to a 4 inch angle iron post found on the north line of Section 36.

THENCE, with the north line of Section 36 and the south line of the Betty Jean Cummins original 45.464 acre tract (O.R. 317, Pg. 264), S 84°-49'-48" E, a distance of 756.33 feet to a 5/8 inch iron rod set.

THENCE, S 2°-25'-00" E, a distance of 482.15 feet to a 5/8 inch iron rod set.

THENCE, S 2°-00'-00" W, a distance of 421.53 feet to a 5/8 inch iron rod set.

THENCE, N 88°-00'-00" W, a distance of 194.39 feet to a 5/8 inch iron rod set.

THENCE, S 0°-16'-17" E, a distance of 627.98 feet to a 5/8 inch iron rod set on the north line of the Dennis E. Stryker 34.5 acre tract, (Vol. 405, Pg. 308).

THENCE, with the north line of the said 34.5 acre tract, N 85°-26'-00" W, a distance of 1154.07 feet the point of beginning, passing a 5/8 inch iron rod set at 1137.57 feet.

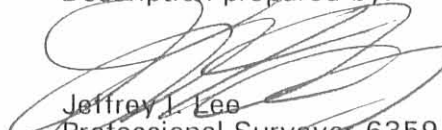
Containing 37.755 acres, of which 0.407 acre is within the highway right-of-way.

The basis for bearings is the center-line of County Highway 13, being S 85°-26'-00" E, and all other bearings are from angles and distances measured in a field survey by Lee Surveying and Mapping Co., Inc. on February 5, 1998.



ORIGINAL STAMP IN GREEN

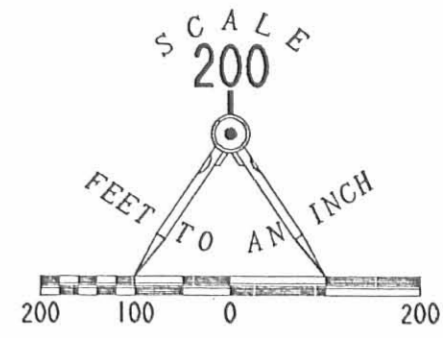
Description prepared by:


Jeffrey I. Lee
Professional Surveyor 6359
February 14, 1998
Revised March 25, 1998

L-2612



INDEXED ON MAP
7889 SP



BETTY JEAN CUMMINS
ORIG. 45.464 ACRES
O.R. 317, PG. 264

GREG JENKINS
5.000 ACRES
O.R. 82, PG. 94

ROGER L. HOUGH
ORIG. 103.000 ACRES
VOL. 340, PG. 125

37.755 ACRES
OF WHICH 0.407 ACRE IS WITHIN
HIGHWAY RIGHT-OF-WAY

37.263 ACRES
OF WHICH 0.405 ACRE IS WITHIN
HIGHWAY RIGHT-OF-WAY

JESSE HANGER
68.90 ACRES
VOL. 324, PG. 183
TRACT I

5.100 ACRES
OF WHICH 0.021 ACRE IS WITHIN
THE HIGHWAY RIGHT-OF-WAY

JESSE HANGER
68.90 ACRES
VOL. 324, PG. 183
TRACT I

LEGEND
● RAILROAD SPIKE SET
● 5/8" IRON ROD SET
● MAG NAIL SET
○ 3/4" IRON PIPE FOUND
○ 5/8" IRON ROD FOUND
⊕ 15" CONCRETE POST FOUND
⊕ 4" ANGLE IRON POST FOUND
⊕ STONE FOUND IN MONUMENT BOX
⊕ RAILROAD SPIKE FOUND

REFERENCES
LOGAN COUNTY ENGINEERS FILES:
FIELD BOOK 598 PAGE 50, 51, AND 52
X-13

JOHN W. HURLEY
ORIG. 129.76 ACRES
O.R. 264, PG. 925

DENNIS E. STRYKER
34.5 ACRES
VOL. 405, PG. 308

0.799 ACRES OUT
OF TRACT II

JESSE HANGER
16.52 ACRES
VOL. 324, PG. 183
TRACT II

COUNTY HIGHWAY 13 (60.0')

SURVEY OF TWO TRACTS OUT OF THE
JESSE HANGER AND MELLICENT HANGER
68.90 ACRE TRACT, AND THE 16.52 ACRE TRACT
VOLUME 324, PAGE 183, TRACTS I AND II
SECTION 36, TOWN 3, RANGE 14
WASHINGTON TOWNSHIP, LOGAN COUNTY, OHIO



SURVEYED BY:

Jeffrey I. Lee
JEFFREY I. LEE
PROFESSIONAL SURVEYOR 6359
FEBRUARY 5, 1998
Revised March 25, 1998
COPYRIGHT 1998 BY:
LEE SURVEYING & MAPPING CO., INC.
117 North Medriver Street
BELLEFONTAINE, OHIO 43311
(937) 593-7335

ORIGINAL STAMP IN GREEN

2 WORKING DAYS
BEFORE YOU DIG
CALL TOLL FREE 800-362-2764
OHIO UTILITIES PROTECTION SERVICE.

POD 7-11-02 JLB OK JCL

Lee Surveying and Mapping Co., Inc.

Land Surveys • Topography • Subdivisions • Construction Layout

117 N. Madriver St.
Bellefontaine OH 43311



Phone: (937) 593-7335
Fax: (937) 593-7444

JENKINS 2.400 ACRES

Lying in Section 36, Town 3, Range 14, Washington Township, Logan County, Ohio.

Being out of the Greg Jenkins and Sandy Jenkins original 5.000 acre tract as deeded and described in Official Record 82, Page 94 of the Logan County Records of Deeds and being more particularly described as follows:

Beginning at a stone found in monument box at the northwest corner of Section 36 on the centerline Township Road 214.

THENCE, with the west line of Section 36 and the center-line of Township Road 214 (33 feet wide), S 04°33'-00" W, a distance of 245.28 feet to a railroad spike set at the TRUE POINT OF BEGINNING.

THENCE, S 84°48'-34" E a distance of 462.01 feet to a 5/8 inch iron rod set, passing a 5/8 inch iron rod set at 16.50 feet.

THENCE, with a west line of the Roger L. Hough 37.755 acre tract (O.R. 355, pg. 483), S 04° 32'-49" W a distance of 226.29 feet to a 5/8 inch iron rod found.

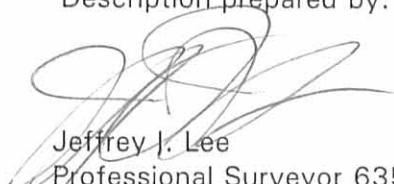
THENCE, with a north line to the said 37.755 acre tract, N 84°48'-34" W a distance of 462.02 feet to a railroad spike found, passing a 5/8 inch iron rod found at 445.52 feet.

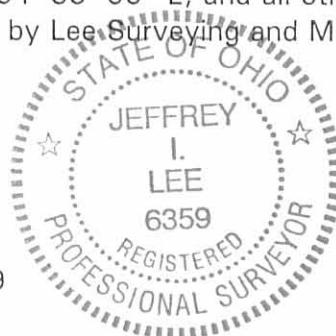
THENCE, with the west line of Section 36 and the center-line of Township Road 214, N 4°33'-00" E a distance of 226.29 feet to the point of beginning.

Containing 2.400 acres, of which 0.086 acre is within the highway right-of-way.

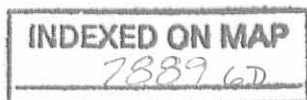
The basis for bearings is the west line of Section 36, being N 04°33'-00" E, and all other bearings are from angles and distances measured in a field survey by Lee Surveying and Mapping Co., Inc. on July 5, 2002.

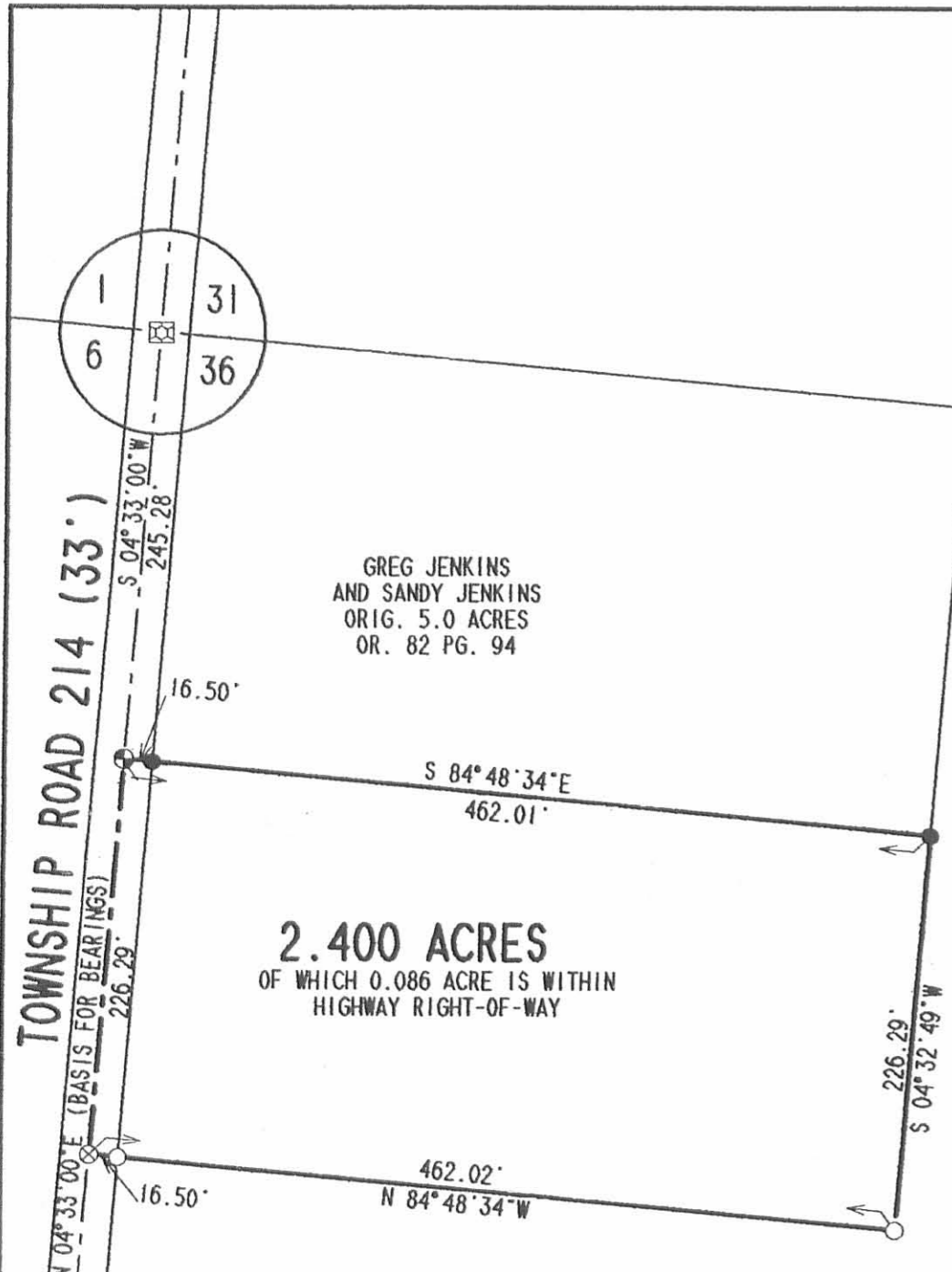
Description prepared by:


Jeffrey J. Lee
Professional Surveyor 6359
July 8, 2002



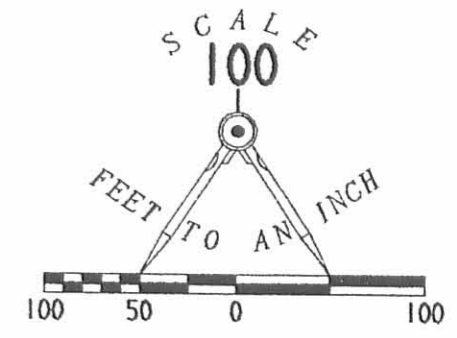
ORIGINAL STAMP IN GREEN 2612





LEGEND

- ⊕ RAILROAD SPIKE SET
- 5/8" IRON ROD SET
- 5/8" IRON ROD FOUND
- ⊗ RAILROAD SPIKE FOUND
- ⊠ STONE FOUND IN MONUMENT BOX



GREG JENKINS
AND SANDY JENKINS
ORIG. 5.0 ACRES
OR. 82 PG. 94

2.400 ACRES
OF WHICH 0.086 ACRE IS WITHIN
HIGHWAY RIGHT-OF-WAY

ROGER L. HOUGH
AND MARTHA J. HOUGH
37.755 ACRES
OR. 355 PG. 483

**SURVEY OF 2.400 ACRES
OUT OF THE GREG JENKINS AND SANDY JENKINS
5.000 ACRE TRACT
OFFICIAL RECORD 82, PAGE 94
SECTION 36, TOWN 3, RANGE 14
WASHINGTON TOWNSHIP, LOGAN COUNTY, OHIO**



ORIGINAL STAMP IN GREEN

SURVEYED BY:
[Signature]
JEFFREY I. LEE
PROFESSIONAL SURVEYOR 6359
JULY 8, 2002

COPYRIGHT 2002 BY:
LEE SURVEYING & MAPPING CO., INC.
117 North Madriver Street
BELLEFONTAINE, OHIO 43311
(937) 593-7335

D 403 HANGER L-2612

2 WORKING DAYS
BEFORE YOU DIG
CALL TOLL FREE **800-362-2764**
OHIO UTILITIES PROTECTION SERVICE.

INDEXED ON MAP
7889 6P

Received 8-7-02 OK gm

Lee Surveying and Mapping Co., Inc.

Land Surveys • Topography • Subdivisions • Construction Layout

117 N. Madriver St.
Bellefontaine OH 43311



Phone: (937) 593-7335
Fax: (937) 593-7444

JENKINS 2.795 ACRES

Lying in Section 36, Town 3, Range 14, Washington Township, Logan County, Ohio.

Being out of the Greg Jenkins and Sandy Jenkins original 5.000 acre tract as deeded and described in Official Record 82, Page 94 of the Logan County Records of Deeds and being more particularly described as follows:

Beginning at a stone found in monument box at the northwest corner of Section 36 on the centerline Township Road 214.

THENCE, with the west line of Section 36 and the center-line of Township Road 214 (33 feet wide), S 04°33'-00" W, a distance of 208.00 feet to a MAG nail set at the TRUE POINT OF BEGINNING.

THENCE, S 84°48'-34" E a distance of 462.00 feet to a 5/8 inch iron rod set, passing a 5/8 inch iron rod set at 16.50 feet.

THENCE, with a west line of the Roger L. Hough 37.755 acre tract (O.R. 355, pg. 483), S 04° 32'-49" W a distance of 263.56 feet to a 5/8 inch iron rod found.

THENCE, with a north line to the said 37.755 acre tract, N 84°48'-34" W a distance of 462.02 feet to a railroad spike found, passing a 5/8 inch iron rod found at 445.52 feet.

THENCE, with the west line of Section 36 and the center-line of Township Road 214, N 4°33'-00" E a distance of 263.56 feet to the point of beginning.

Containing 2.795 acres, of which 0.099 acre is within the highway right-of-way.

The basis for bearings is the west line of Section 36, being N 04°33'-00" E, and all other bearings are from angles and distances measured in a field survey by Lee Surveying and Mapping Co., Inc. on July 5, 2002 and July 24, 2002.

Description prepared by:



A handwritten signature in black ink, appearing to read 'Jeffrey I. Lee'.

Jeffrey I. Lee
Professional Surveyor 6359
July 8, 2002
Revised July 24, 2002

L-2612

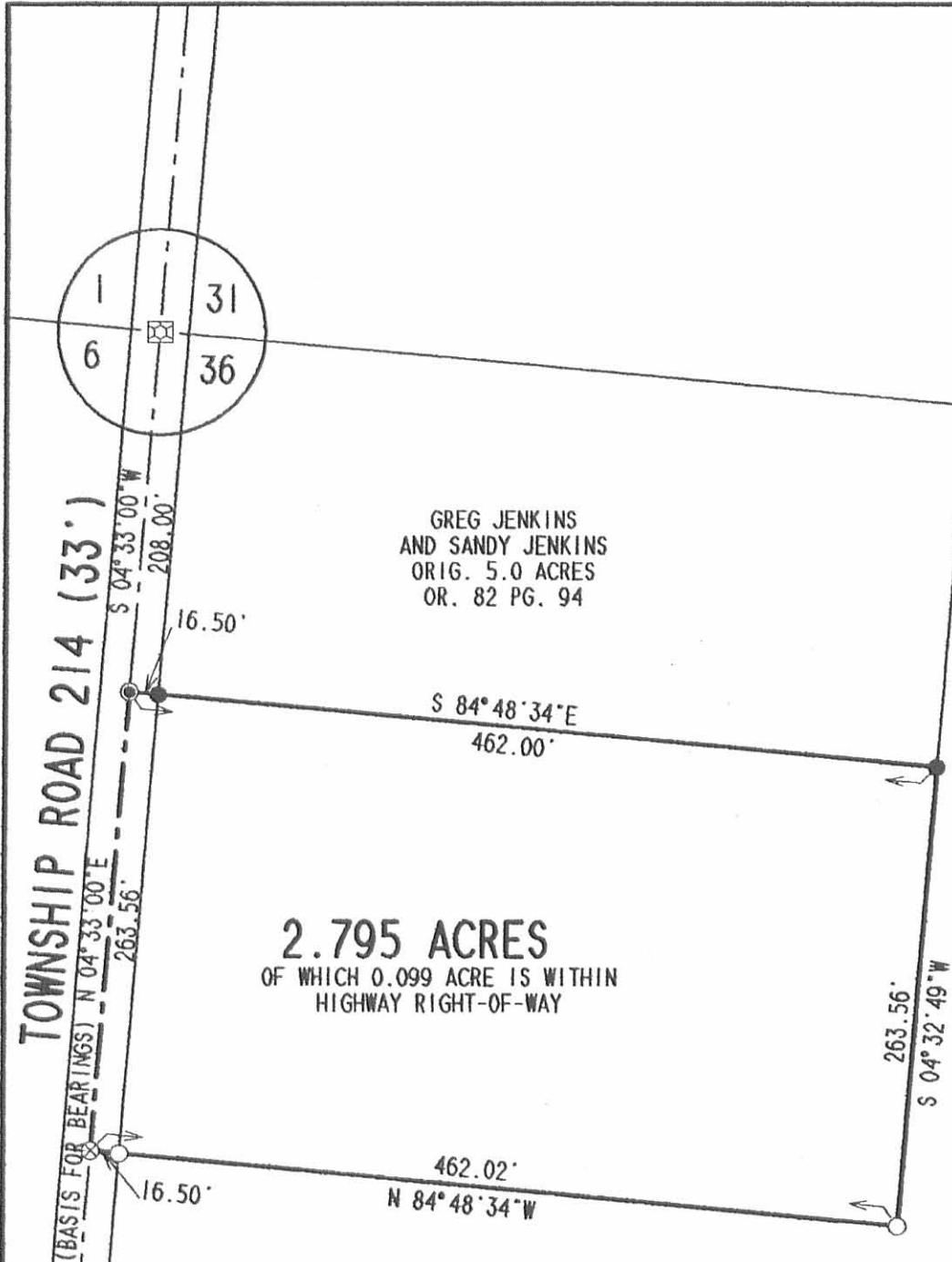
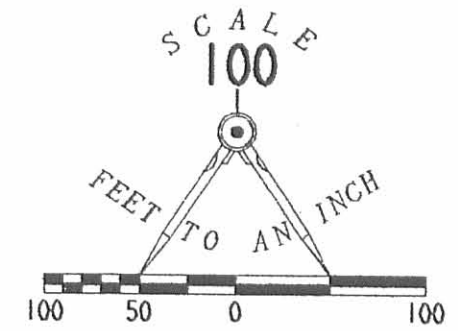
ORIGINAL STAMP IN GREEN

MEMBER: AMERICAN CONGRESS ON SURVEYING & MAPPING (ACSM) • NATIONAL SOCIETY OF PROFESSIONAL SURVEYORS (NSPS)
PROFESSIONAL LAND SURVEYORS OF OHIO (PLSO) • SURVEYORS HISTORICAL SOCIETY

INDEXED ON MAP
7889 7D

LEGEND

- MAG NAIL SET
- 5/8" IRON ROD SET
- 5/8" IRON ROD FOUND
- ⊗ RAILROAD SPIKE FOUND
- ☒ STONE FOUND IN MONUMENT BOX

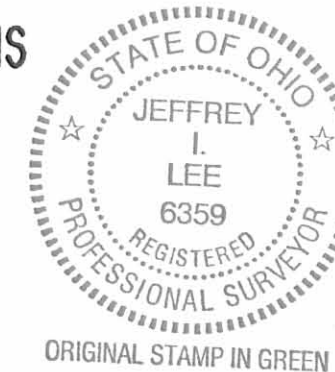


GREG JENKINS
AND SANDY JENKINS
ORIG. 5.0 ACRES
OR. 82 PG. 94

ROGER L. HOUGH
AND MARTHA J. HOUGH
37.755 ACRES
OR. 355 PG. 483

2.795 ACRES
OF WHICH 0.099 ACRE IS WITHIN
HIGHWAY RIGHT-OF-WAY

**SURVEY OF 2.795 ACRES OUT OF
THE GREG JENKINS AND SANDY JENKINS
5.000 ACRE TRACT
OFFICIAL RECORD 82, PAGE 94
SECTION 36, TOWN 3, RANGE 14
WASHINGTON TOWNSHIP
LOGAN COUNTY, OHIO**



SURVEYED BY:

Jeffrey I. Lee
JEFFREY I. LEE
PROFESSIONAL SURVEYOR 6359
JULY 8, 2002
REVISED JULY 24, 2002

COPYRIGHT 2002 BY:
LEE SURVEYING & MAPPING CO., INC.
117 North Madriver Street
BELLEFONTAINE, OHIO 43311
(937) 593-7335

D 403 HANGER L-2612

2 WORKING DAYS
BEFORE YOU DIG
CALL TOLL FREE **800-362-2764**
OHIO UTILITIES PROTECTION SERVICE.

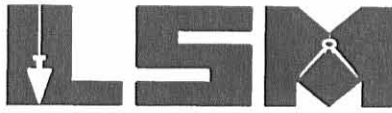
INDEXED ON MAP
7889 7P

Received 8-30-02 OK JLT

Lee Surveying and Mapping Co., Inc.

Land Surveys • Topography • Subdivisions • Construction Layout

117 N. Madriver St.
Bellefontaine OH 43311



Phone: (937) 593-7335
Fax: (937) 593-7444

HOUGH 0.159 ACRES

Lying in Section 36, Town 3, Range 14, Washington Township, Logan County, Ohio.

Being out of the Roger L. Hough and Martha J. Hough original 37.755 acre tract as deeded and described in Official Record 355, Page 483 of the Logan County Records of Deeds and being more particularly described as follows:

Beginning at a stone found in monument box at the northwest corner of Section 36 on the centerline Township Road 214.

THENCE, with the west line of Section 36 and the center-line of Township Road 214 (33 feet wide), S 04°33'-00" W, a distance of 471.56 feet to a railroad spike found at the TRUE POINT OF BEGINNING.

THENCE, with the south line of the Greg Jenkins original 5.0 acre tract (O.R. 82, Pg. 94), S 84°48'-34" E a distance of 462.02 feet to a 5/8 inch iron rod found, passing a 5/8 inch iron rod found at 16.50 feet.

THENCE, with the east line extended of the said 5.0 acre tract, S 04° 32'-49" W a distance of 15.00 feet to a 5/8 inch iron rod set.

THENCE, N 84°-48'-34" W, a distance of 462.02 feet to a MAG nail set, passing a 5/8 inch iron rod set at 445.52 feet.

THENCE, with the west line of Section 36 and the center-line of Township Road 214, N 4°33'-00" E a distance of 15.00 feet to the point of beginning.

Containing 0.159 acres, of which 0.006 acre is within the highway right-of-way.

The basis for bearings is the west line of Section 36, being N 04°33'-00" E, and all other bearings are from angles and distances measured in a field survey by Lee Surveying and Mapping Co., Inc. on August 21, 2002.

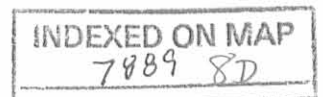
Description prepared by:



ORIGINAL STAMP IN GREEN

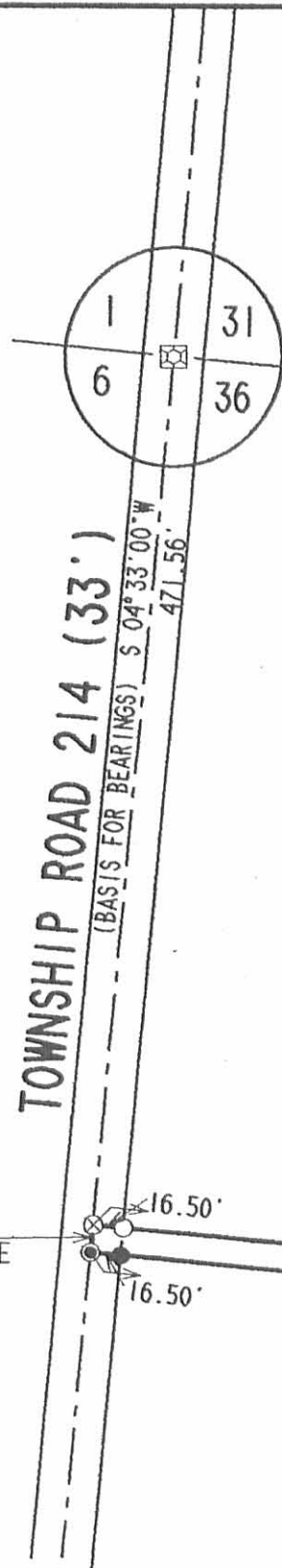
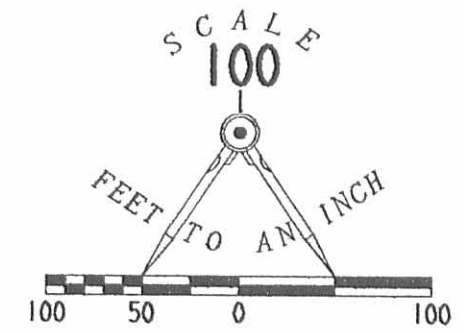
Jeffrey I. Lee
Jeffrey I. Lee
Professional Surveyor 6359
August 22, 2002

L-2612



LEGEND

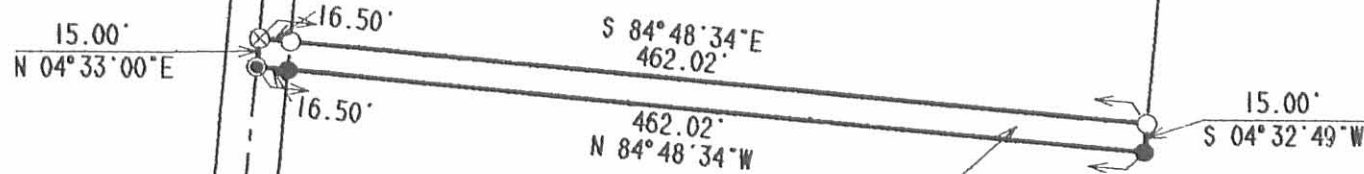
- MAG NAIL SET
- 5/8" IRON ROD SET
- 5/8" IRON ROD FOUND
- ⊗ RAILROAD SPIKE FOUND
- ⊠ STONE FOUND IN MONUMENT BOX



GREG JENKINS
AND SANDY JENKINS
ORIG. 5.0 ACRES
OR. 82 PG. 94

ROGER L. HOUGH
AND MARTHA J. HOUGH
ORIG. 37.755 ACRES
OR. 355 PG. 483

**SURVEY OF 0.159 ACRE OUT OF
THE ROGER L. HOUGH AND MARTHA J. HOUGH
ORIGINAL 37.755 ACRE TRACT
OFFICIAL RECORD 355, PAGE 483
SECTION 36, TOWN 3, RANGE 14
WASHINGTON TOWNSHIP
LOGAN COUNTY, OHIO**



0.159 ACRES
OF WHICH 0.006 ACRE IS WITHIN
THE HIGHWAY RIGHT-OF-WAY



ORIGINAL STAMP IN GREEN

SURVEYED BY:

Jeffrey I. Lee
JEFFREY I. LEE
PROFESSIONAL SURVEYOR 6359
AUGUST 21, 2002

COPYRIGHT 2002 BY:
LEE SURVEYING & MAPPING CO., INC.
117 North Madriver Street
BELLEFONTAINE, OHIO 43311
(937) 593-7335

D 403 HANGER2 L-2612

2 WORKING DAYS
BEFORE YOU DIG
CALL TOLL FREE **800-362-2764**
OHIO UTILITIES PROTECTION SERVICE.

INDEXED ON MAP
7889 SP

Lee Surveying and Mapping Co., Inc.

Land Surveys • Topography • Subdivisions • Construction Layout

117 N. Madriver St.
Bellefontaine OH 43311



Phone (937) 593-7335
Fax: (937) 593-7444

PROFESSIONAL SURVEYOR'S AFFIDAVIT

William K. Bruce, being first duly sworn, deposes and says that he is a Registered Professional Surveyor under the laws of the State of Ohio, being Professional Surveyor No. 7437 and that he is making this affidavit for the purposes of correcting the description to certain real estate situated in Washington Township, Logan County, Ohio, presently owned by Roger L. Hough and Martha J. Hough by virtue of a Warranty Deed recorded in Official Record Volume 355, Page 483 of the Logan County Records of Deeds.

The corrected description being as follows with corrections underlined:

Lying in Section 36, Town 3, Range 14, Washington Township, Logan County, Ohio.

Being out of the Jesse Hanger and Mellicent Hanger original 68.90 acre tract as deeded and described in Volume 324, Page 183, Tract I of the Logan County Records of Deeds and being more particularly described as follows:

Beginning at a 3/4 inch iron pipe found on the southwest corner of the northwest quarter of Section 36, Town 3, Range 14, on the center-line of Township Road 214 at the intersection with the center-line of County Highway 13.

THENCE, with the west line of Section 36 and the center-line of Township Road 214 (33 feet wide), N 4°-33'-00" E a distance of 1138.50 feet to a railroad spike set at the TRUE POINT OF BEGINNING.

THENCE, with the west line of Section 36 and the center-line of Township Road 214, N 4°-33'-00" E, a distance of 1075.40 feet to a railroad spike found at the southwest corner of the Greg Jenkins 5.000 acre tract, (O.R. 82, Pg. 94).

THENCE, with the lines of the said 5.000 acre tract, the following two (2) courses:

S 84°-48'-34" E, a distance of 462.02 feet to a 5/8 inch iron rod found, passing a 5/8 inch iron rod set at 16.50 feet.

N 4°-32'-49" E, a distance of 471.43 feet to a 4 inch angle iron post found on the north line of Section 36.

THENCE, with the north line of Section 36 and the south line of the Betty Jean Cummins original 45.464 acre tract (O.R. 317, Pg. 264), S 84°-49'-48" E, a distance of 756.33 feet to a 5/8 inch iron rod set.

THENCE, S 2°-25'-00" E, a distance of 482.15 feet to a 5/8 inch iron rod set.

THENCE, S 2°-00'-00" W, a distance of 421.53 feet to a 5/8 inch iron rod set.

THENCE, N 88°-00'-00" W, a distance of 194.39 feet to a 5/8 inch iron rod set.

THENCE, S 0°-16'-17" E, a distance of 627.98 feet to a 5/8 inch iron rod set on the north line of the Dennis E. Stryker 34.5 acre tract, (Vol. 405, Pg. 308).

THENCE, with the north line of the said 34.5 acre tract, N 85°-26'-00" W, a distance of 1154.07 feet the point of beginning, passing a 5/8 inch iron rod set at 1137.57 feet.

Containing 37.755 acres, of which 0.407 acre is within the highway right-of-way.

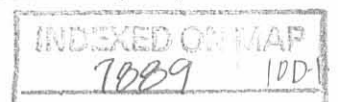
The basis for bearings is the center-line of County Highway 13, being S 85°-26'-00" E, and all other bearings are from angles and distances measured in a field survey by Lee Surveying and Mapping Co., Inc. on February 5, 1998.

PARCEL # 51-074-00-00-007.002

STATE OF OHIO
LOGAN COUNTY RECORDER
LINDA HANSON
D 2008007437
PAM Date 11/04/2008
Recording Fee: 113.00
OR 932/851
Time 08:51:43
39:00

Handwritten signature

DESCRIPTION CHECKED
LOGAN CO. ENGINEER
11-4-08



Lee Surveying and Mapping Co., Inc.

Land Surveys • Topography • Subdivisions • Construction Layout

117 N. Madriver St.
Bellefontaine OH 43311



Phone (937) 593-7335
Fax: (937) 593-7444

D 2008007437

OR 932/852

This affidavit is made in compliance with Revised Code of Ohio Sec. 5301.252 and particularly to show an affidavit of a professional surveyor to reconcile conflicts and ambiguities in descriptions of land in recorded instruments as stated in paragraph B(5) of Section 5301.252. Under Sec. 5301.252(C) the County Recorder shall receive and cause such affidavit to be recorded as deeds are recorded.

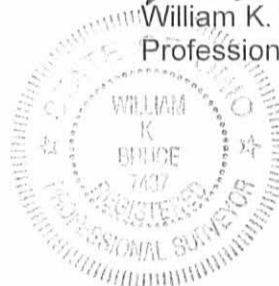
SIGNED AND ACKNOWLEDGED IN THE PRESENCE OF:

Philip E. Schirtzinger Jr.
Philip E. Schirtzinger Jr.

William L. Shoots
William L. Shoots

William K. Bruce

William K. Bruce
Professional Surveyor No. 7437



ORIGINAL STAMP IN GREEN

STATE OF OHIO,
LOGAN COUNTY, SS:

BE IT REMEMBERED, that on this 3rd day of November, 2008, before me, the subscriber, a Notary Public in and for said County and State, personally came the above named William K. Bruce the maker of the foregoing Affidavit, and acknowledged the signing of the same to be his voluntary act and deed, for the uses and purposes therein mentioned.

IN TESTIMONY WHEREOF, I have hereunto subscribed my name and affixed my official seal, on the day and year last aforesaid.

Cindy Cushman
Notary Public,



CINDY CUSHMAN
NOTARY PUBLIC
STATE OF OHIO
Comm. Expires
November 13, 2011

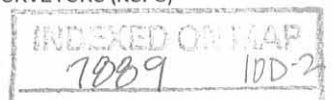
RECORDER:

Please cross reference to Official Record Volume 355, Page 483 in the Abstract of the Deed Records of Logan County, Ohio.

This instrument was prepared by William K. Bruce.

11-4-08
TRANSFER NOT NECESSARY
LOGAN COUNTY AUDITOR
uk

hanger.aff.doc



4/8 1915

John McKinnon } ch. cr.
Milt. McKinnon }

7889

MCKINNON SURVEY

LINE A

Along pike
 Beg in ch. at S.E. of school lot.
 E. LINE Farm N. 5 E
 2.24 ch. to W. Line School Lot.
 N. 85 W with center PIKE

20.70 to E. LINE Griffiths cor. stone

20.45 to E. LINE of rt. of way
 Griffiths E. LINE N. 4 1/4 E. N 4 1/4 E

Dep. for 45' in 13.00 ch = .17

cut off 27 acres along road.

20.45	
20.62	
2 41.07	
20.535	275.000
20.535	113.39
69.650	
61605	
80450	
61605	
188450	
184815	

calculated 27 acres + 1/2 A. to E.
 Line of 1 rod rt. of way

WASHINGTON TP APRIL 8, 1915.

LINE B

Along W. side of Land
 ch 13.39 N. for W. side 27 A.
 Trial distance 13.39 drove stake
 N. 4 1/4 E } O.K.

LINE C

Along E. side 27 Acres
 set stake at 13.39

LINE D

Along N side 27 A.
 N 85 W 20.535] 27.50
 20.87

20.45	
20.62	
2 41.07	
20.535	184815
13.39	61605
184815	61605
61605	61605
20535	20535
27.496365	Acres

7889

LINE E

N. from stake at N end of

LINE B.

N. $4\frac{1}{4}$ E

3.86 ch to Griffiths N.E. cor (post)

$$\begin{array}{r} .0131 \\ 3.86 \\ \hline 786 \\ 1048 \\ 393 \\ \hline .050566 \end{array}$$

$$\begin{array}{r} 20.87 \\ 20.92 \\ \hline 41.79 \\ 1.93 \\ \hline 12537 \\ 37611 \\ 4179 \\ \hline 806547 \end{array}$$

A to

N. A of Griffiths and N. of
27 acres.

LINE F

Along N side Griffiths

N 185W

20-29 ch.

LINE G

Along Devings E. Line and with
center of public road

N 5E.

23.44 ch to McKinnon N.W. A

$$\begin{array}{r} 23.44 \\ 13.39 \\ 3.86 \\ \hline 40.69 \end{array}$$

10009

LINE H

Along N Line McKinnon and S. Line }
 S. 84 1/2 E (Moore Bros)

Set stake at

10.00
 20.00
 30.00

41.06 to N.E. corner and
 N.W. cor. Licklider

LINE I

Along Lickliders and John McKinnons
 W. Line

20.48 ch to S.W. L Licklider

27.02 ch to stake at N.E. cor

27 acre tract

73829

$$\begin{array}{r}
 20.87 \\
 20.70 \\
 \hline
 41.57 \\
 13.39 \\
 \hline
 37413 \\
 12471 \\
 12471 \\
 4157 \\
 \hline
 25566223 \\
 27.83A
 \end{array}$$

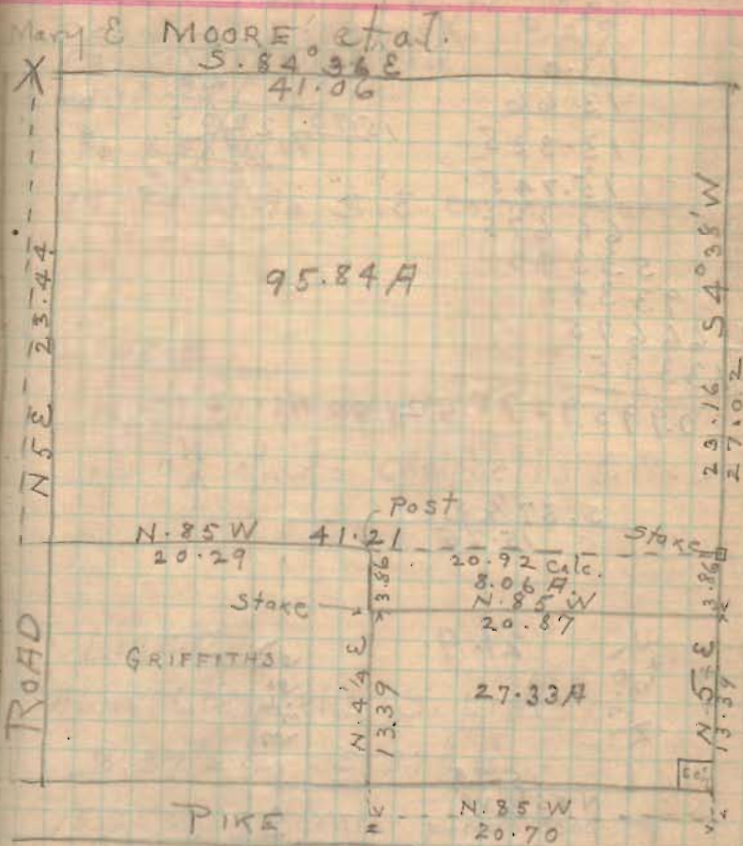
$$\begin{array}{r}
 41.06 \\
 41.21 \\
 \hline
 82.27 \\
 23.30 \\
 \hline
 246810 \\
 24681 \\
 \hline
 16454 \\
 2 \overline{) 19168910} \\
 95.84 \\
 8.06 \\
 \hline
 103.90 \\
 27.83 \\
 \hline
 131.73 \\
 .83 \\
 \hline
 130.90
 \end{array}$$

$$\begin{array}{r}
 20.87 \\
 20.92 \\
 \hline
 41.79 \\
 1.93 \\
 \hline
 12537 \\
 37611 \\
 4179 \\
 \hline
 806547
 \end{array}$$

$$\begin{array}{r}
 23.44 \\
 23.16 \\
 \hline
 246.60 \\
 23.30 \\
 \hline
 95.84 \\
 8.06 \\
 \hline
 21.00 \\
 124.90 \\
 10.50 \\
 \hline
 114.40 \\
 7.00 \\
 \hline
 107.40
 \end{array}$$

$$\begin{array}{r}
 23.16 \\
 33 \\
 \hline
 22.83
 \end{array}$$

$$\begin{array}{r}
 68.90 \\
 26.25 \\
 \hline
 95.15 \\
 69 \\
 \hline
 95.84
 \end{array}$$

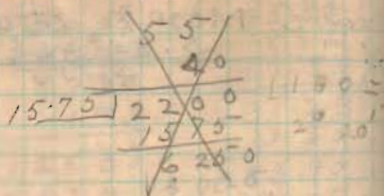
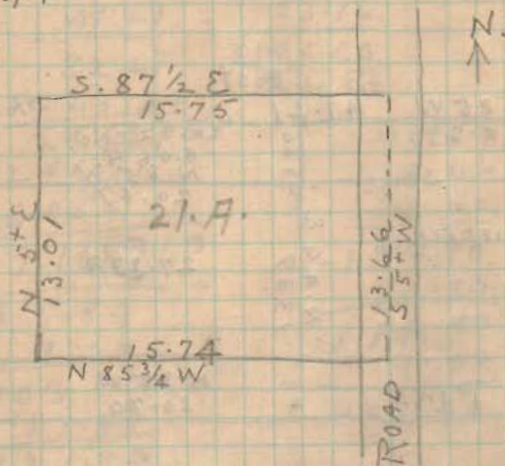
$$\begin{array}{r}
 95.84 \\
 8.06 \\
 \hline
 27.33 \\
 131.23 \\
 27.33 \\
 \hline
 103.90 \\
 8.75 \\
 \hline
 95.15 \\
 26.25 \\
 \hline
 68.90
 \end{array}$$


Tract W. of road

13.01
 13.66
 13.335
 15.745

 66 675
 53340
 93345
 66675
 13335

20.9959575 = 21.00 Acres



TRACT W. OF ROAD

Begin at corner X P. 59
 17' center public Road.

LINE A

N. 85 ³/₄ W

15.74 ch to S.E. corner Herring.

LINE B

N 5+ E N 5+ E.

13.01 ch to Campbells S.W. ✓

LINE C

Along Campbells S. Line

S. 87 ¹/₂ E. S. 87 ¹/₂ E.

15.75 ch to center public Road. and
 Campbells S.E. Cor.

LINE D

With center road

S. 5+ W

13.66 to X

1889

$.69 \times 10 = 6.90$

$$\begin{array}{r} 20.92 \overline{) 6.900} \\ \underline{6.276} \\ 6240 \\ \underline{.6276} \\ .69036 \end{array}$$

26.25

$$\begin{array}{r} 22.87 \overline{) 262.50} \\ \underline{2287} \\ 3380 \\ \underline{2287} \\ 10930 \\ \underline{9148} \\ 17820 \end{array}$$

11.48

$$\begin{array}{r} 11.48 \\ \underline{28} \\ 9184 \\ \underline{2296} \\ 41 \overline{) 32144} \\ \underline{328} \end{array}$$

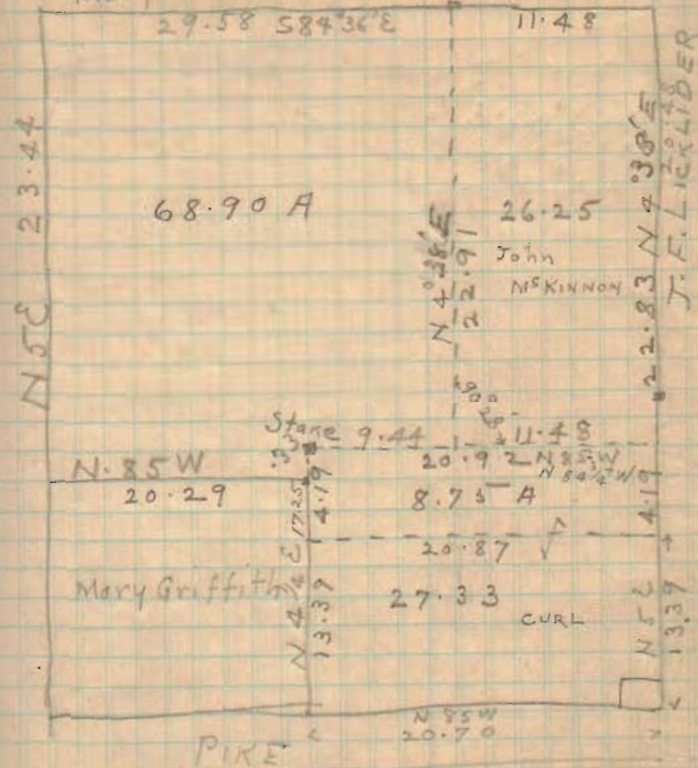
$$\begin{array}{r} 13.39 \\ \underline{4.19} \\ 17.58 \end{array}$$

$$\begin{array}{r} 27.02 \\ \underline{4.19} \\ 22.83 \end{array}$$

$$\begin{array}{r} 22.87 \\ \underline{11.48} \\ 18296 \\ \underline{9148} \\ 2287 \\ \underline{2287} \\ 26254764 \end{array}$$

$$\begin{array}{r} 20.92 \\ \underline{20.87} \\ 20.895 \\ \underline{4.19} \\ 188055 \\ \underline{20895} \\ 83580 \\ \underline{8755005} \end{array}$$

Mary E. Moore et al stake



7809