

LOCATION OF  
 WELL AND PUMP  
 VILLAGE OF LEWISTOWN  
 SECTION 24 T.7S R.8E.  
 WASHINGTON TOWNSHIP  
 LOGAN COUNTY, OHIO  
 AUGUST 17, 1984

(7198) 1P

INDEXED ON MAP

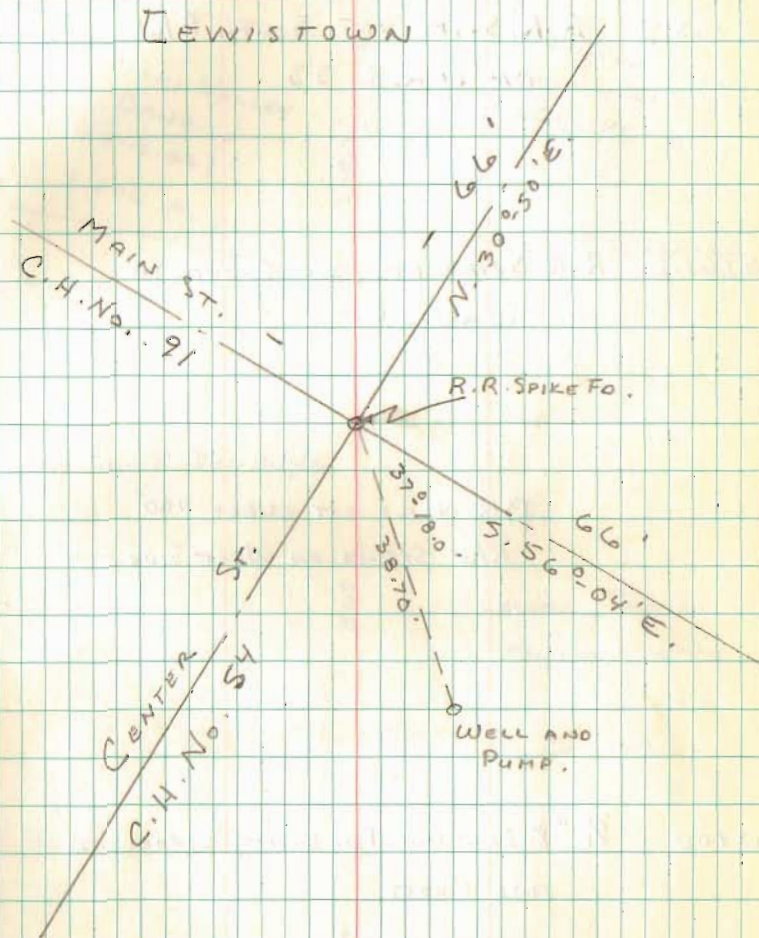
SCALE: 1" = 20'

SURVEYED AND PLATTED BY:  
 DANIEL E. GILBERT, P.S.  
 REG. SUR. NO. 5402  
 LOGAN COUNTY DEPUTY SURVEYOR  
 CHESTER R. KURTZ - P.E., P.S.  
 LOGAN COUNTY ENGINEER

FB 709

LOCATION OF  
WELL AND PUMP  
VILLAGE OF LEWISTOWN  
SECTION 24 T.7S R.8E.  
WASHINGTON TOWNSHIP  
LOGAN COUNTY, OHIO

8-17-84  
D. GILBERT 18  
K. C. DILL  
J. GOODWIN



7190