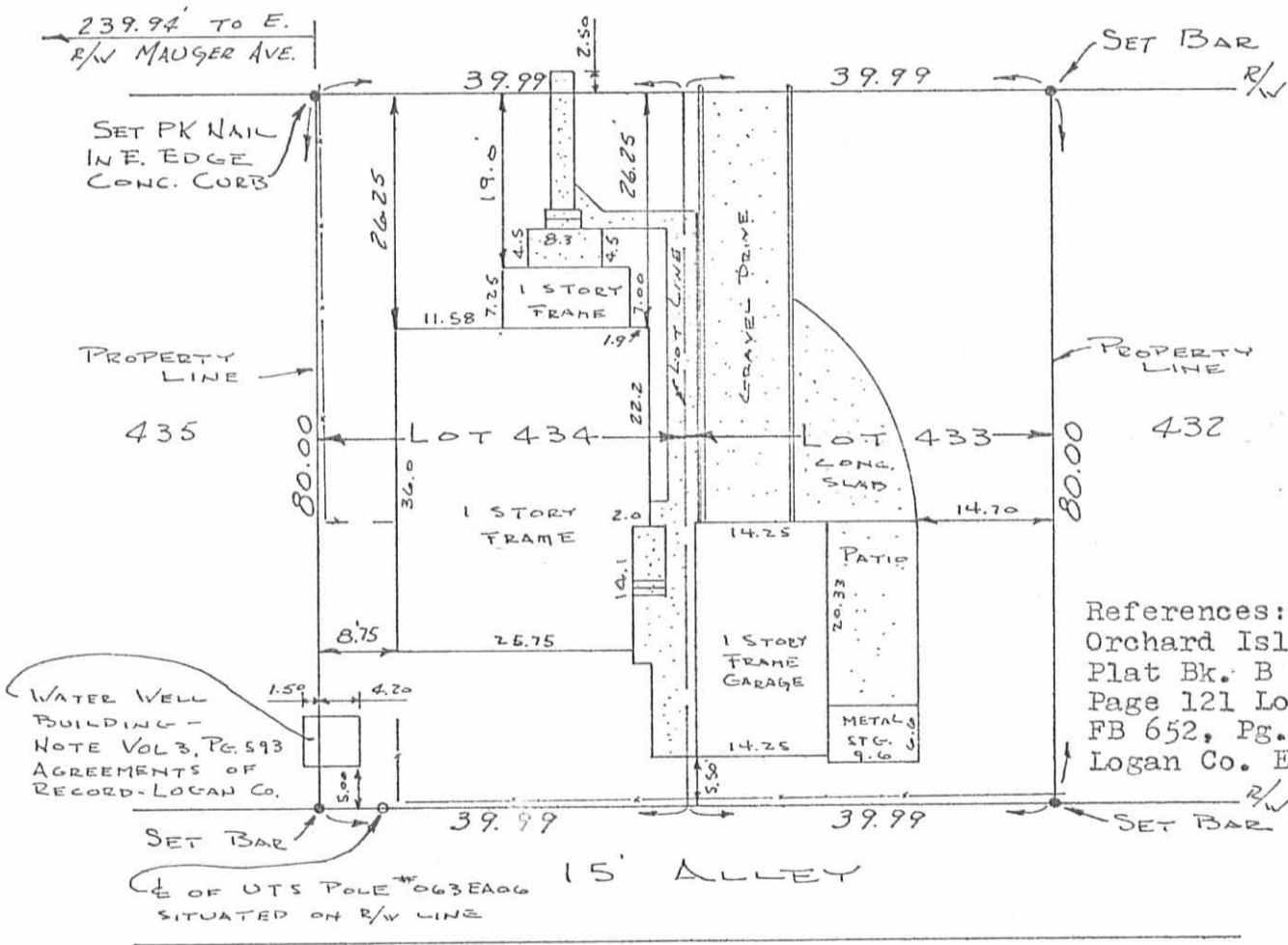


STANLEY WOODEN SURVEY  
 LOTS # 433 and 434  
 ORCHARD ISLAND  
 SEC. 36 T.6S. R.8E.  
 WASHINGTON TOWNSHIP  
 LOGAN COUNTY, OHIO

SCALE 1"=20'

CRESSENT ST. - 35'



References:  
 Orchard Island Plat  
 Plat Bk. B Vol. 2  
 Page 121 Logan Co.  
 FB 652, Pg. 30  
 Logan Co. Engineer

I hereby certify that this plat is a correct representation of a survey of lots #433 and #434 as designated on the recorded plat thereof for Orchard Island, Washington Township, Logan County, Ohio, made by me on June 13, 1976. The buildings situated on the lots are located entirely within the lot lines except as noted.

5919 IP

Larry E. Blosser SIT # 1199  
 Bellefontaine, Ohio 43311

INDEXED ON MAP

Checked By: Daniel E. Gilbert P.S.

Registered Surveyor #5402