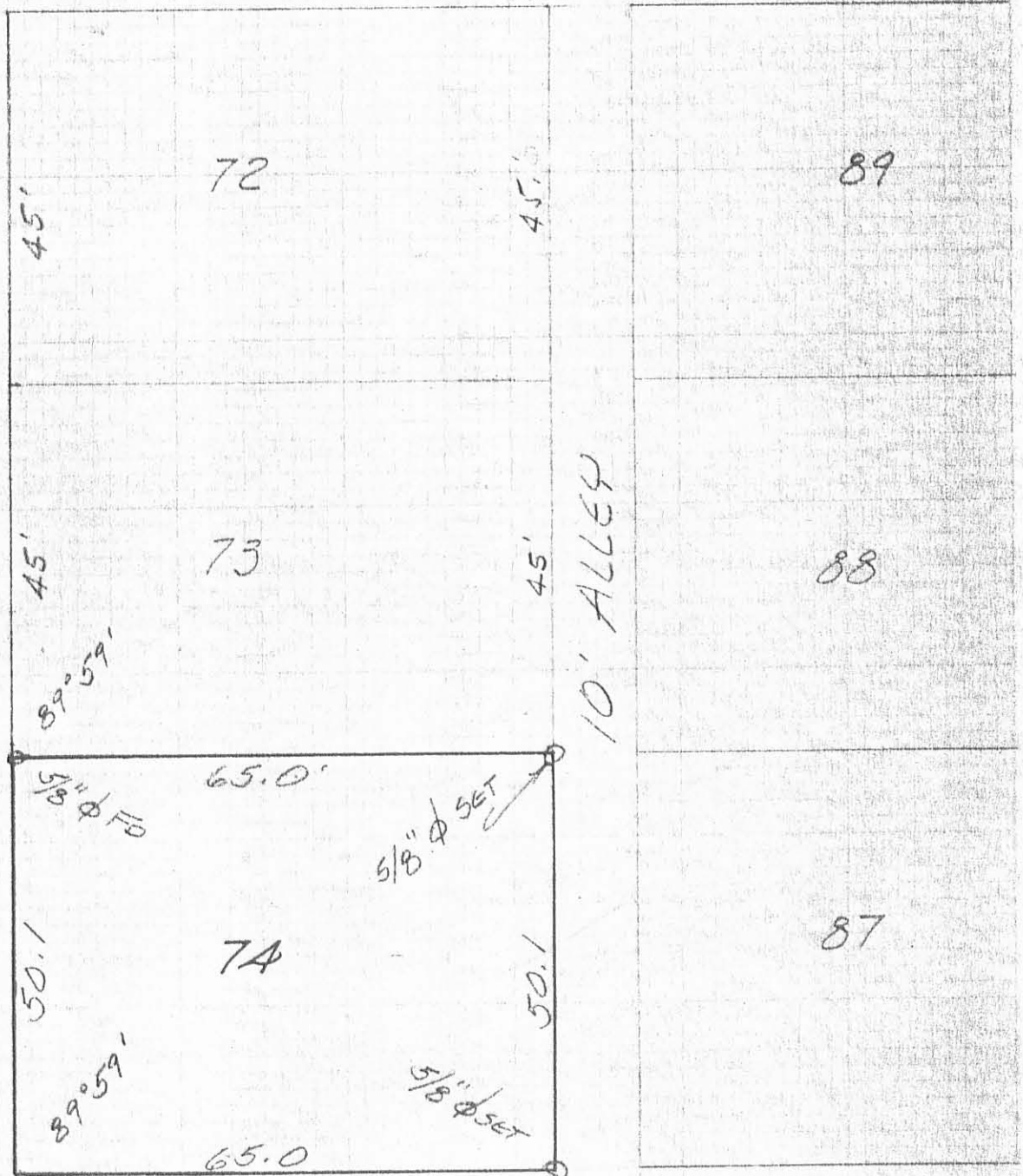


WILLOW AVE. (20')

PARK DRIVE (25')

10' ALLEY



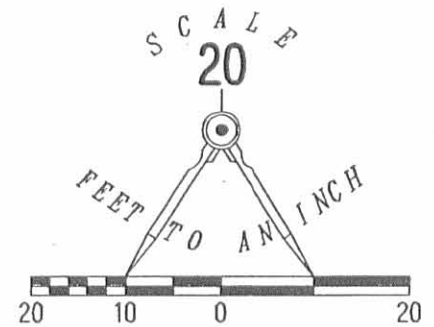
5/8" ϕ PLACED OVER OLD HUB
5697 IP

SURVEY OF LOT 74
WATERBURY ALLOT.
RUSSELLS POINT, OHIO
NOV., 1974

LESLIE H. GRESLIN
REG. SURVEYOR 5248
Rus...

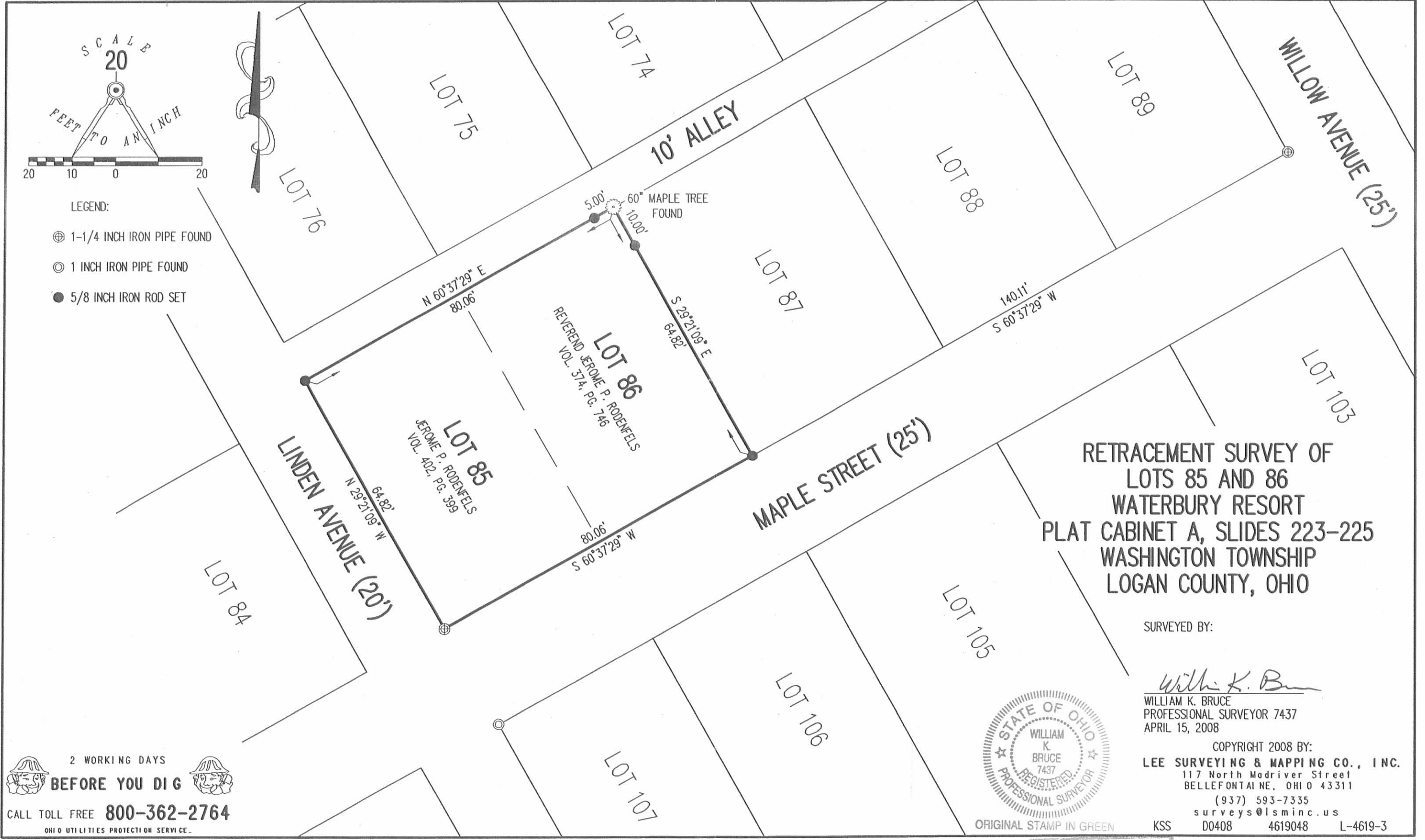
INDEXED ON MAP

REC'D 4-17-08 SMY OK



LEGEND:

- ⊕ 1-1/4 INCH IRON PIPE FOUND
- ⊙ 1 INCH IRON PIPE FOUND
- 5/8 INCH IRON ROD SET



RETRACEMENT SURVEY OF
LOTS 85 AND 86
WATERBURY RESORT
PLAT CABINET A, SLIDES 223-225
WASHINGTON TOWNSHIP
LOGAN COUNTY, OHIO

SURVEYED BY:

William K. Bruce

WILLIAM K. BRUCE
PROFESSIONAL SURVEYOR 7437
APRIL 15, 2008



ORIGINAL STAMP IN GREEN

COPYRIGHT 2008 BY:
LEE SURVEYING & MAPPING CO., INC.
117 North Madriver Street
BELLEFONTAINE, OHIO 43311
(937) 593-7335
surveys@lsmcinc.us
KSS D0408 4619048 L-4619-3

2 WORKING DAYS
BEFORE YOU DIG
CALL TOLL FREE **800-362-2764**
OHIO UTILITIES PROTECTION SERVICE.

INDEXED ON MAP
5697 2P