

WALNUT STREET - 35'

REFERENCE:
ORCHARD ISLAND PLAT.
PLAT BOOK B VOL. 2 PAGE 121.

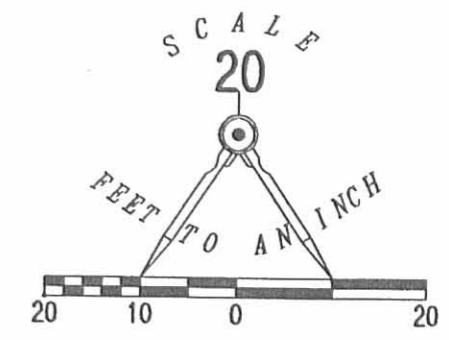
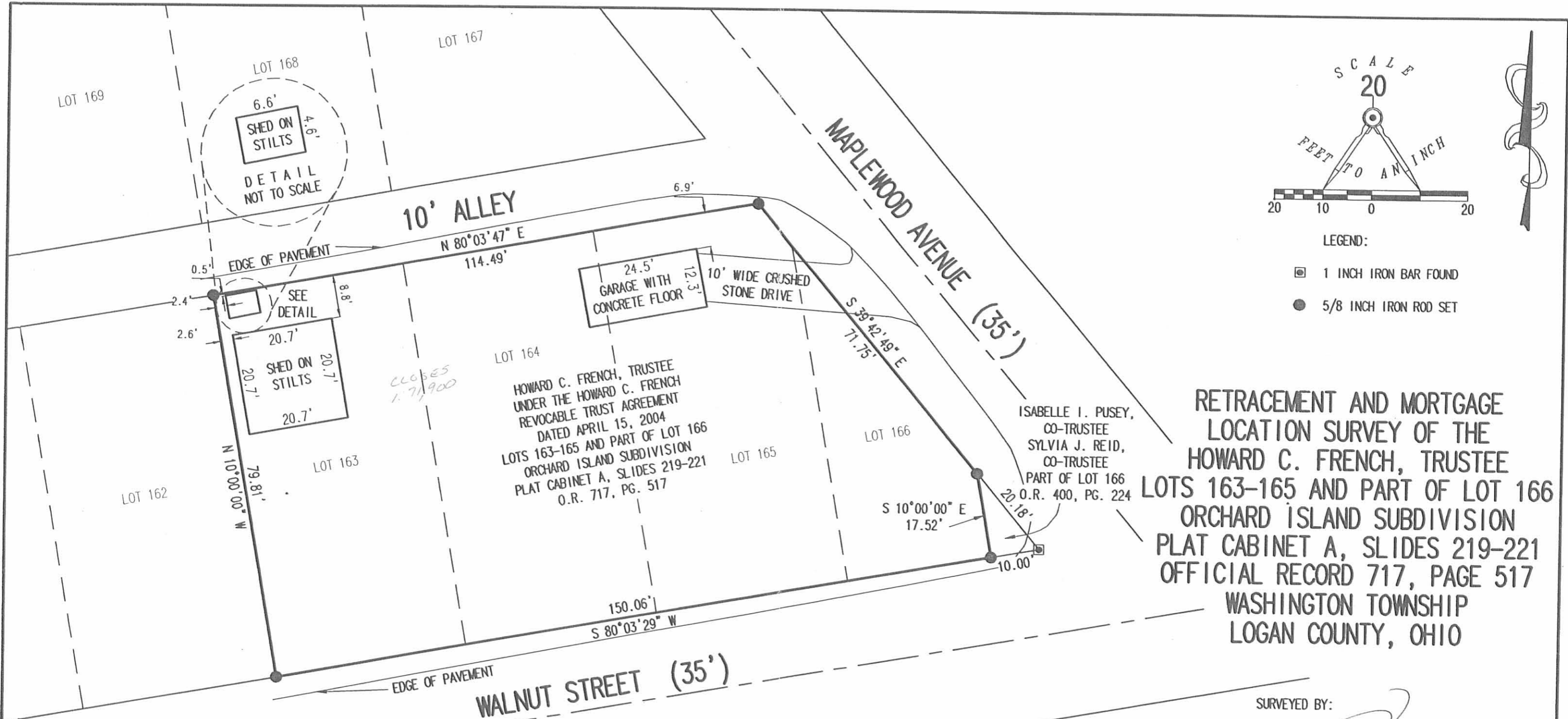
SURVEYED AND PLATED BY:
DANIEL E. GILBERT, P.S.
REG. SUR. No. 5402
428 N. MADRIVER ST.
BELLEFONTAINE, OHIO 43311

LOT 160 SURVEY
ORCHARD ISLAND
WASHINGTON TOWNSHIP
LOGAN COUNTY, OHIO
APRIL 24, 1971

4802
IP

SCALE: 1"=20'

Rec'd 1-11-05 SWY OK



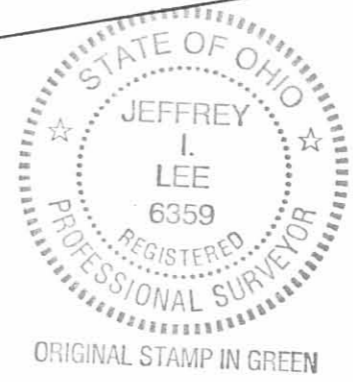
- LEGEND:
- 1 INCH IRON BAR FOUND
 - 5/8 INCH IRON ROD SET

RETRACEMENT AND MORTGAGE
LOCATION SURVEY OF THE
HOWARD C. FRENCH, TRUSTEE
LOTS 163-165 AND PART OF LOT 166
ORCHARD ISLAND SUBDIVISION
PLAT CABINET A, SLIDES 219-221
OFFICIAL RECORD 717, PAGE 517
WASHINGTON TOWNSHIP
LOGAN COUNTY, OHIO

SURVEYED BY:

Jeffrey I. Lee

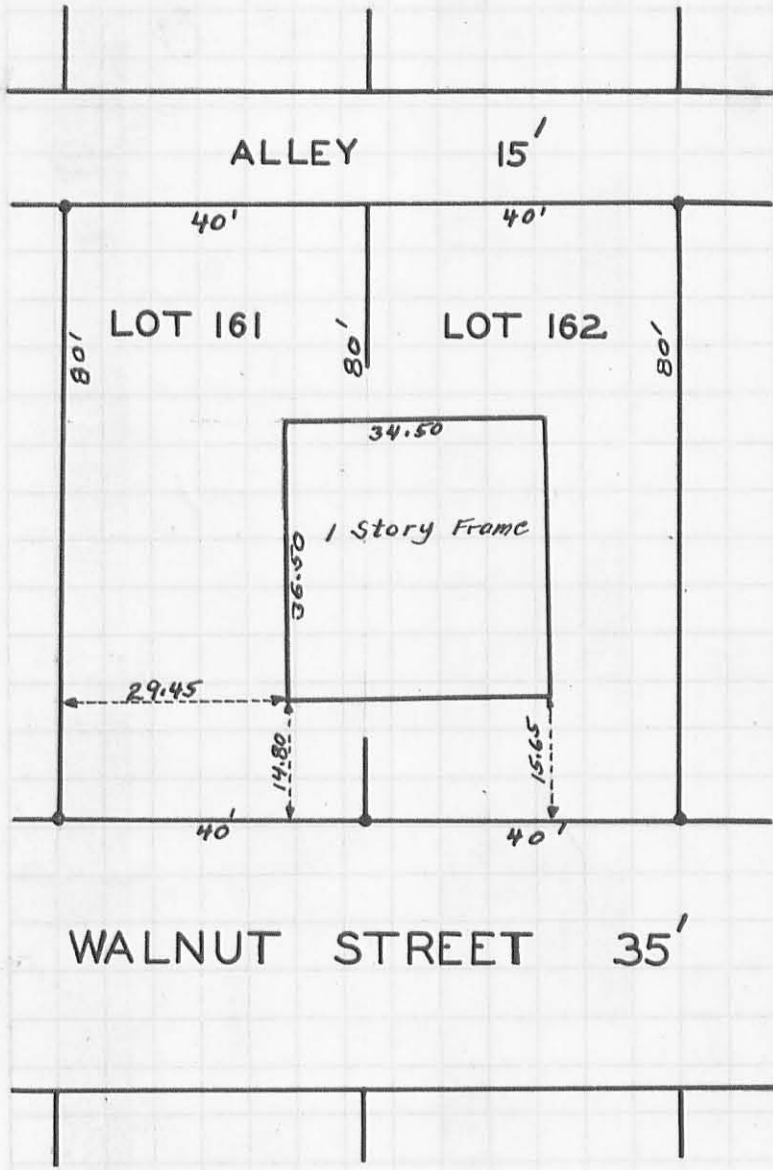
JEFFREY I. LEE
PROFESSIONAL SURVEYOR 6359
JANUARY 4, 2005
REVISED JANUARY 10, 2005



COPYRIGHT 2005 BY:
LEE SURVEYING & MAPPING CO., INC.
117 North Madriver Street
BELLEFONTAINE, OHIO 43311
(937) 593-7335

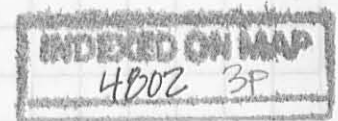
2 WORKING DAYS
BEFORE YOU DIG
CALL TOLL FREE **800-362-2764**
OHIO UTILITIES PROTECTION SERVICE.

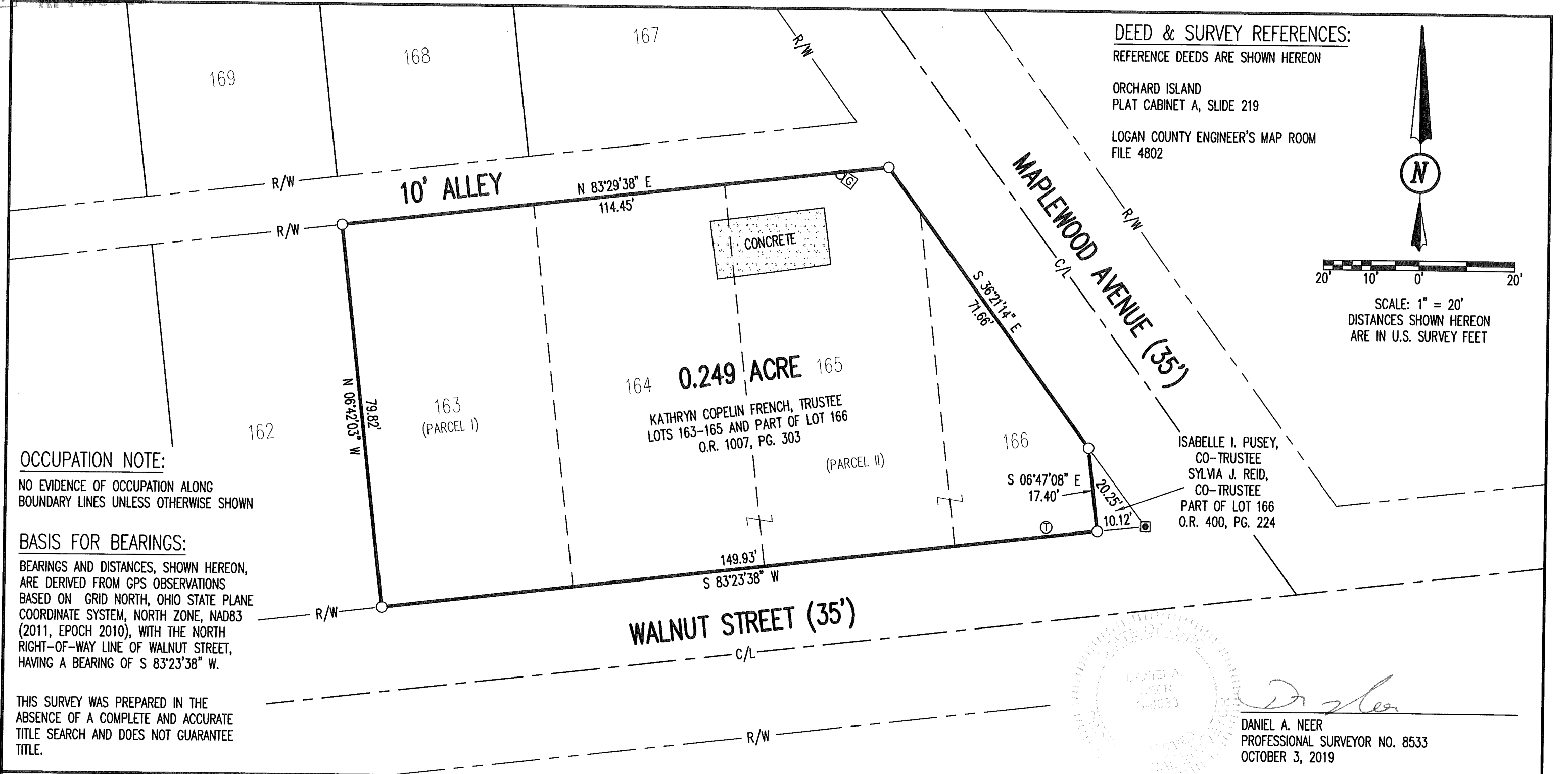
INDEXED ON MAP
4802 2P



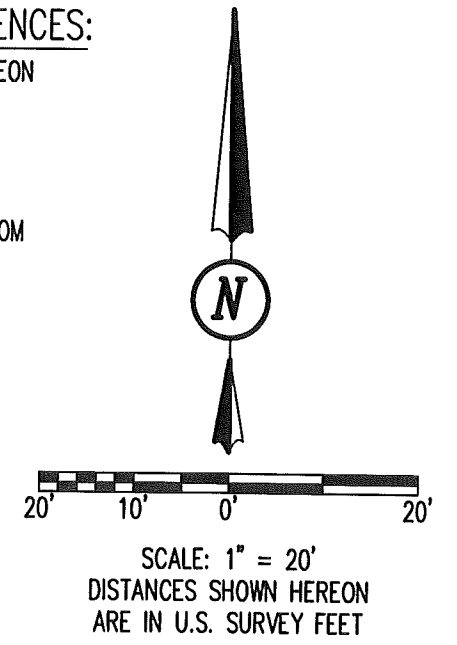
July 30, 1954
I find no encroachments
on Lots 161 - 162
Foster F. Wright.

ELMORE SURVEY
LOTS 161 & 162
ORCHARD ISLAND ALLOTMENT
WASHINGTON TOWNSHIP
LOGAN COUNTY OHIO
JULY 1954 1" = 25'
FOSTER F. WRIGHT





DEED & SURVEY REFERENCES:
 REFERENCE DEEDS ARE SHOWN HEREON
 ORCHARD ISLAND
 PLAT CABINET A, SLIDE 219
 LOGAN COUNTY ENGINEER'S MAP ROOM
 FILE 4802



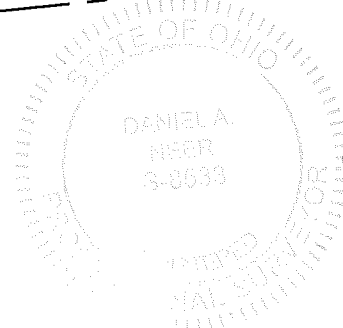
OCCUPATION NOTE:
 NO EVIDENCE OF OCCUPATION ALONG
 BOUNDARY LINES UNLESS OTHERWISE SHOWN

BASIS FOR BEARINGS:
 BEARINGS AND DISTANCES, SHOWN HEREON,
 ARE DERIVED FROM GPS OBSERVATIONS
 BASED ON GRID NORTH, OHIO STATE PLANE
 COORDINATE SYSTEM, NORTH ZONE, NAD83
 (2011, EPOCH 2010), WITH THE NORTH
 RIGHT-OF-WAY LINE OF WALNUT STREET,
 HAVING A BEARING OF S 83°23'38" W.

THIS SURVEY WAS PREPARED IN THE
 ABSENCE OF A COMPLETE AND ACCURATE
 TITLE SEARCH AND DOES NOT GUARANTEE
 TITLE.

0.249 ACRE
 KATHRYN COPELIN FRENCH, TRUSTEE
 LOTS 163-165 AND PART OF LOT 166
 O.R. 1007, PG. 303

ISABELLE I. PUSEY,
 CO-TRUSTEE
 SYLVIA J. REID,
 CO-TRUSTEE
 PART OF LOT 166
 O.R. 400, PG. 224



Daniel A. Neer
 DANIEL A. NEER
 PROFESSIONAL SURVEYOR NO. 8533
 OCTOBER 3, 2019

COPYRIGHT 2019 BY:

 117 N. Madriver Street • Bellefontaine, OH 43311
 (937) 593-7335 • www.dlz.com
 Project #1921-2079.00

LEGEND

1 INCH IRON BAR FOUND	R/W = RIGHT-OF-WAY
5/8 INCH IRON ROD FOUND WITH I.D. CAP STAMPED "LEE PS 6359"	C/L = CENTER-LINE
GAS LINE MARKER	
TELEPHONE PEDESTAL	

RETRACEMENT SURVEY
 LOTS 163-165 AND PART OF LOT 166
 ORCHARD ISLAND
 PLAT CABINET A, SLIDE 219
 WASHINGTON TOWNSHIP
 LOGAN COUNTY, OHIO

DRAWN BY:	DESCRIPTION	REV. NO.	DATE
KSS			10/11/2019

INDEXED ON MAP
 4802