

Lee Surveying and Mapping Co., Inc.

Land Surveys • Topography • Subdivisions • Construction Layout

117 N. Madriver St.
Bellefontaine OH 43311



Phone: (937) 593-7335
Fax: (937) 593-7444

BROWN 0.154 ACRES

Lying in Section 36, Town 6, Range 8, Washington Township, Logan County, Ohio.

Being out of the excess lands of Indian Lake south and east of Lot 26 of the Orchard Island Allotment as recorded in Plat Cabinet A, Slide 220 of the Logan County Records of Deeds, and the waters of Indian Lake and being more particularly described as follows:

Beginning at a 3/4 inch iron rod found on the south right-of-way of Poplar Street at the north west corner of Lot 26.

THENCE, with the south right-of-way of Poplar Street (35 feet wide) and the north line of Lot 26, N 90°-00'-00"E, a distance of 69.98 feet to a railroad spike set at the TRUE POINT OF BEGINNING.

THENCE, with the south right-of-way and south right-of-way extended of Poplar Street, N 90°-00'-00"E, a distance of 37.53 feet to a point on the face of a 5 inch concrete seawall, passing a 5/8 inch iron rod set at 31.95 feet.

THENCE, with the face of a 5 inch concrete sea wall, the following five (5) courses:

- S 13°-12'-00"W, a distance of 45.31 feet to a point;
- S 82°-31'-30"W, a distance of 16.62 feet to a point;
- S 01°-02'-30"W, a distance of 32.89 feet to a point;
- S 76°-17'-30"W, a distance of 78.17 feet to a point;
- N 13°-10'-00"W, a distance of 18.00 feet to a screw found.

THENCE, with the west line of Lot 26 extended, N 00°-01'-55"W, a distance of 40.20 feet to a 5/8 inch iron rod found.

THENCE, with the southeasterly line of Lot 26, N 60°-15'-55"W, a distance of 80.57 feet to the point of beginning.

Containing 0.154 acre.

The basis for bearings is the south line of Poplar Street, Being N 90°-00'-00" E, and all other bearings are from angles and distances measured in a field survey by Lee Surveying and Mapping Co., Inc. on January 31, 2003

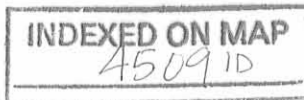
Description prepared by:

Jeffrey I. Lee
Professional Surveyor 6359
March 18, 2003

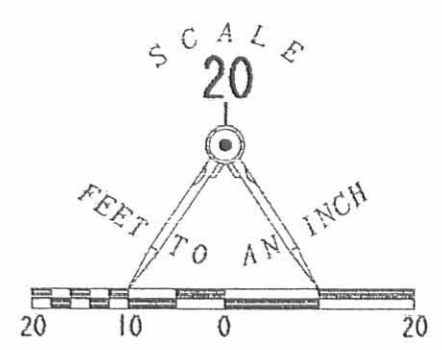


L-3526

ORIGINAL STAMP IN GREEN



REC'D 3-25-03 SWY OK



- LEGEND
- 5/8 INCH IRON ROD SET
 - 5/8 INCH IRON ROD FOUND
 - 3/4 INCH IRON ROD FOUND
 - ⊕ RAILROAD SPIKE SET
 - ⊗ SCREW FOUND

RETRACEMENT SURVEY OF LOT 26
OF ORCHARD ISLAND ALLOTMENT
PLAT CABINET A. SLIDE 220
SECTION 36, TOWN 6, RANGE 8
WASHINGTON TOWNSHIP
LOGAN COUNTY, OHIO

2 WORKING DAYS
BEFORE YOU DIG
CALL TOLL FREE **800-362-2764**
OHIO UTILITIES PROTECTION SERVICE.

INDEXED ON MAP
45091P



ORIGINAL STAMP IN GREEN

SURVEYED BY:
Jeffrey I. Lee
JEFFREY I. LEE
PROFESSIONAL SURVEYOR 6359
JANUARY 31, 2003
COPYRIGHT 2003 BY:
LEE SURVEYING & MAPPING CO., INC.
117 North Madriver Street
BELLEFONTAINE, OHIO 43311
(937) 593-7335
D 407 MRCRTBN L-3526-3



Survey of Lot No. 26
 Orchard Island
 For
 Washington Township
 Trustees
 January 8, 1969
 Scale 1" = 10'

Surveyed & Drawn By
 Leslie H. Geeslin
 Reg. Surveyor # 5248

4509

INDEXED ON MAP

Pg. 55, 56 FB 706

SURVEY OF LOT 26
ORCHARD ISLAND

FOR WASH. TWP. TRUSTEES

NOTE: Cottage Grove Ave. is shown
on Plat of Orchard Isl. as
a 30' st. from Poplar St. to
Court St. All evidence indicates
that this should be 35'.

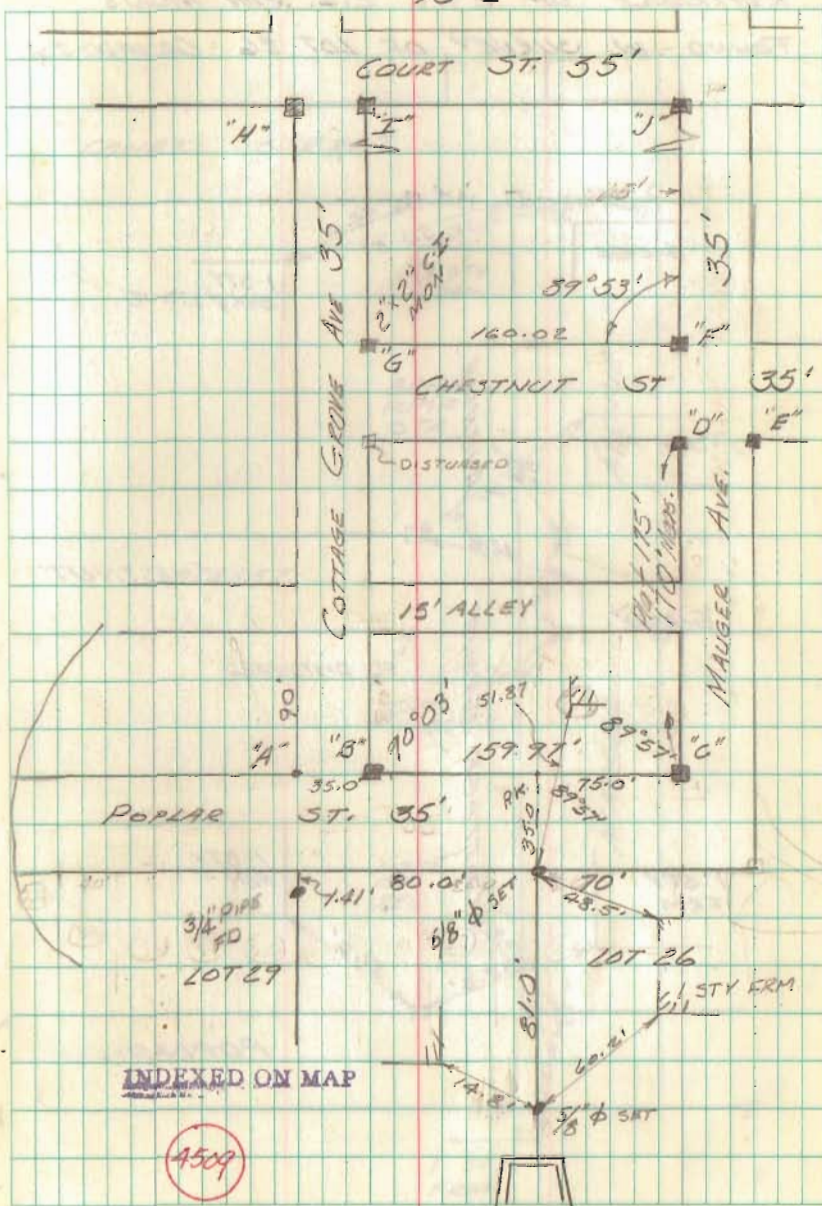
A = 1/2" Iron Pipe Fd

B, C, D, E, F, G, H, I, J = 2" x 2" C.I. Bar Fd.

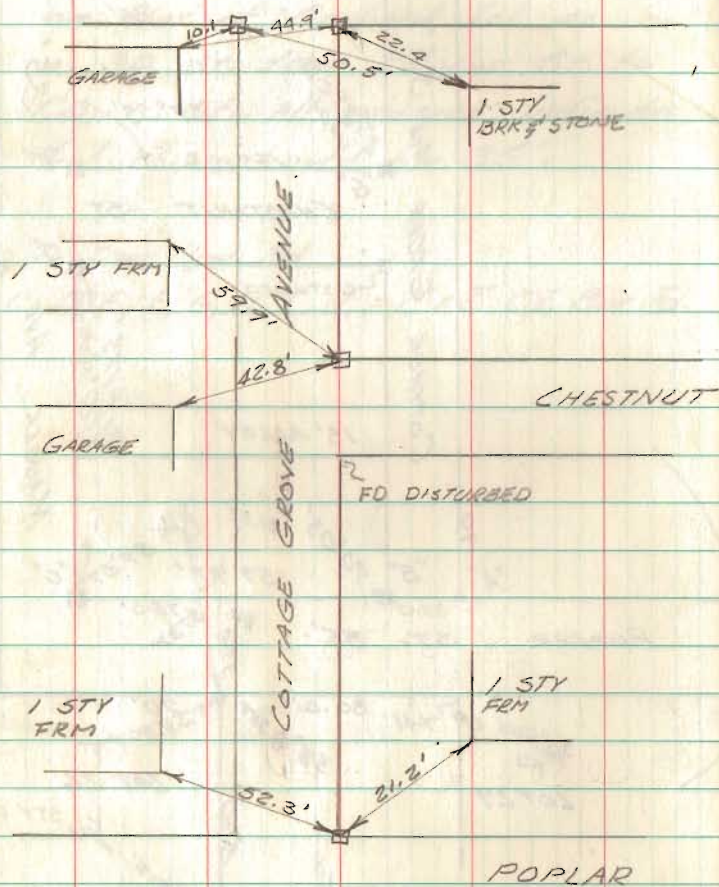
Geeslin ✕
Nichols ✕

JAN 6, 7, 8, 1969
CLOUDY-WINDY
10° ±

55



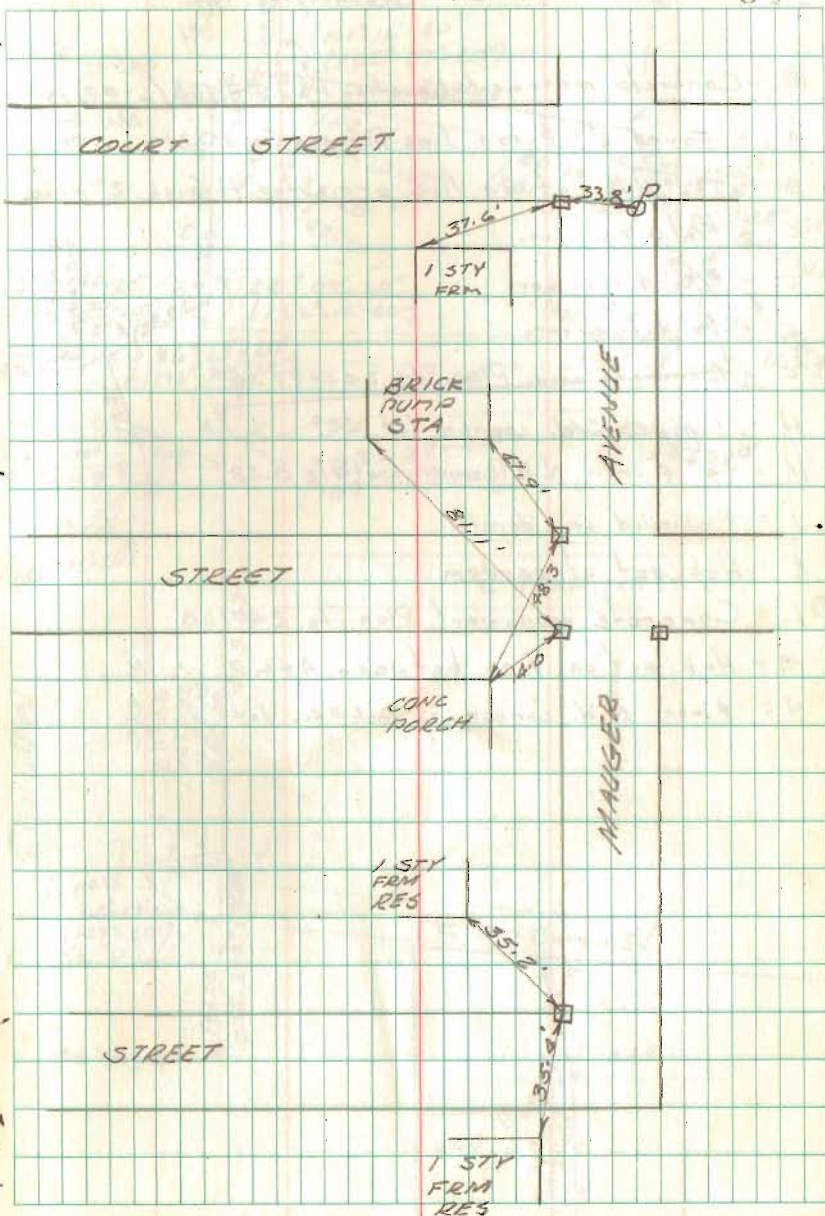
REFERENCE OF 2" x 2" C.I. R/W IN MON'S
 FOUND IN SURVEY OF LOT 26 ORCHARD ISL.



GEESLIN
 NICHOLS

JANUARY 8, 1969
 CLOUDY WINDY
 10° ±

59



Washington Twp.

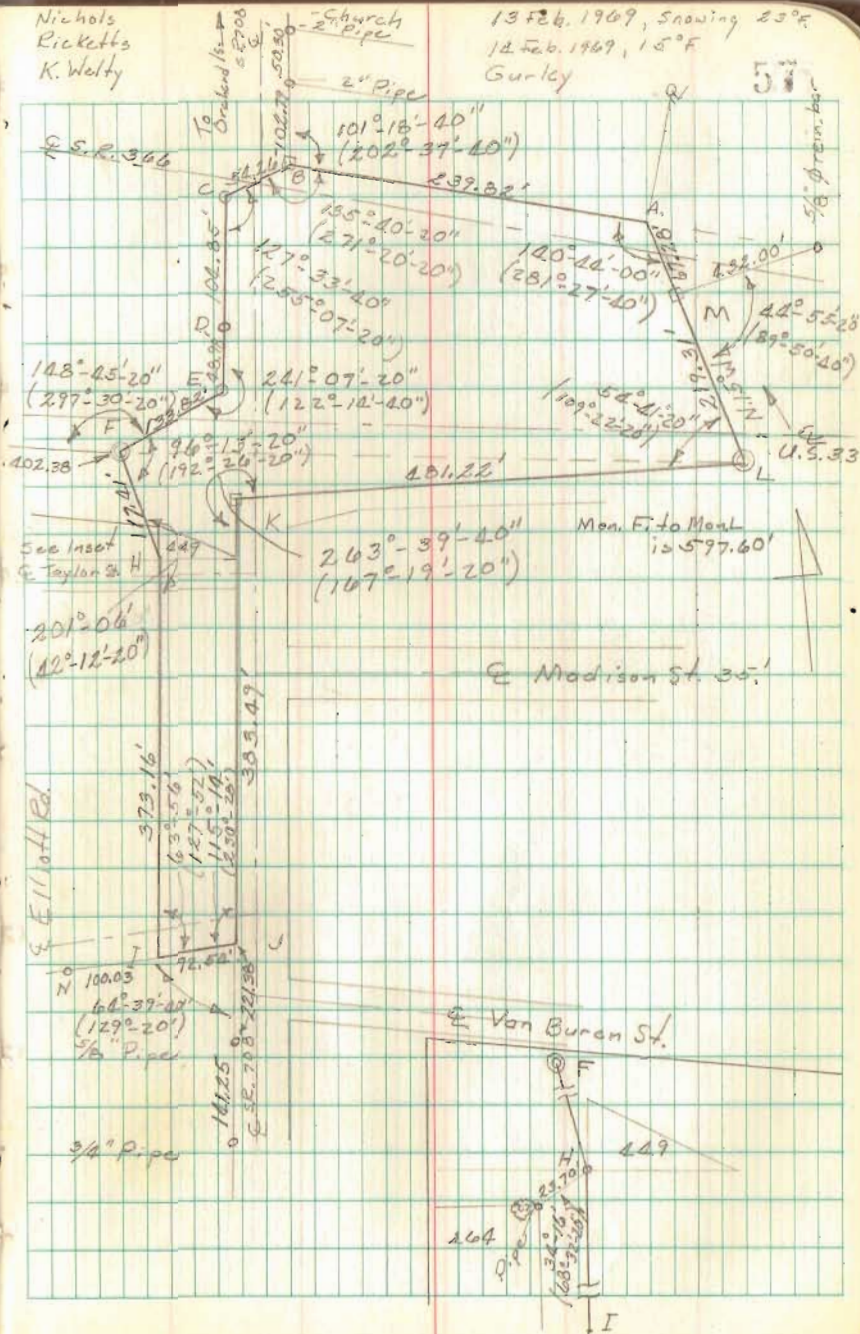
- © - Concrete monuments, Location Plan S.H. 168 (L-93) pg. 2
- A - Found $5/8 \phi$ iron, line between Coon O.21 Maj. Marine
1.54
- B - Tkd. Hub set on line projected through 2" pipe
- C - $5/8 \phi$ rein. bar.
- D - $5/8 \phi$ rein. bar.
- E - $5/8 \phi$ rein. bar.
- © F = Concrete mon. Plan Sta. 245+97.36
- H = 1" pipe S.W. corner lot 449
- I = $3/4 \phi$ iron, N.E. corner Guthrie O.23
- J = + chiseled on sidewalk.
- K = Hub set at random
- © L = Concrete monument Plan Sta. 240+00
- M = Hub set on line between A & L.
- N = ϕ iron N.W. corner of O.23 & Co. lot.

Mon. Sta.
240+00

Nichols
Ricketts
K. Walty

13 Feb. 1969, Snowing 25°F
12 Feb. 1969, 15°F
Gurley

57



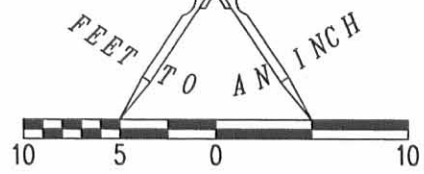
RAID 9-19-12 SMY AK

POPLAR STREET (35')

5/8 INCH IRON ROD FOUND
ELV. = 997.21

1/2 INCH IRON PIPE FOUND
ELV. = 997.40

SCALE
10



LEGEND:

- 5/8 INCH IRON ROD FOUND
- ⊙ 1/2 INCH IRON PIPE FOUND



LOT 27

LOT 26

LOT 28

ATTACHED GARAGE
FF=997.80'

ONE-STORY WOOD-FRAME
RESIDENCE ON CRAWL SPACE
FF = 999.06'

WELL (W)

SEE
DETAIL

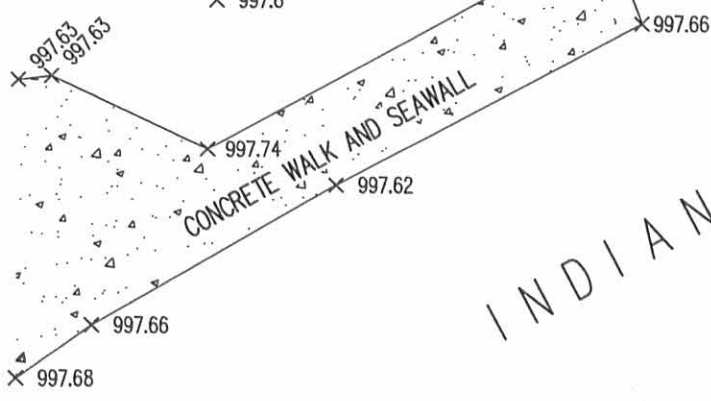
DETAIL
NOT TO SCALE

STEVEN J. NEELEY
0.154 ACRE
O.R. 754, PG. 376
TRACT II

REFERENCE BENCHMARK:

CHISELED SQUARE ON SOUTHEAST CORNER OF
NORTHEAST WINGWALL AT STATION 40+40.0 -2' LT.
ELEVATION = 1005.60'
(INDIAN LAKE SANITARY SEWER DISTRICT
CONTRACT NO. 5 FORCE MAIN)

2 WORKING DAYS
BEFORE YOU DIG
CALL TOLL FREE **800-362-2764**
OHIO UTILITIES PROTECTION SERVICE



INDIAN LAKE

RETRACEMENT AND ELEVATION SURVEY FOR
VALORI V. MILLER
LOT 27
ORCHARD ISLAND
PLAT CABINET A, SLIDE 219
OFFICIAL RECORD 94, PAGE 94
WASHINGTON TOWNSHIP
LOGAN COUNTY, OHIO

SURVEYED BY:

William K. Bruce

WILLIAM K. BRUCE
PROFESSIONAL SURVEYOR 7437
SEPTEMBER 12, 2012

COPYRIGHT 2012 BY:
LEE SURVEYING & MAPPING CO., INC.
117 North Madriver Street
BELLEFONTAINE, OHIO 43311
(937) 593-7335
WWW.LSMINC.US
surveys@lsminc.us



ORIGINAL STAMP IN GREEN

KSS D0912 53970912 L-5397-3

INDEXED ON MAP 4509 3P

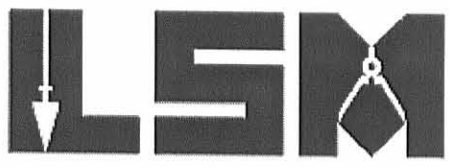
Received 11/1/12 OK 904

Lee Surveying and Mapping Co., Inc.



and Surveys • Topography • Subdivisions • Construction Layout

117 N. Madriver St.
Bellefontaine OH 43311



Phone: (937) 593-7335
Fax: (937) 593-7444
surveys@lsminc.us

INDIAN LAKE RESERVOIR LANDS 0.048 ACRE

Lying in Section 36, Town 6, Range 8, Washington Township, Logan County, Ohio.

Being out of the Indian Lake Reservoir Lands and being more particularly described as follows:

Commencing on a 1/2 inch iron pipe found on the northeast corner of Lot 27 and northwest corner of Lot 26 of Orchard Island (Plat Cabinet A, Slide 219) on the south right-of-way of Poplar Street.

THENCE, with the east line of Lot 27 and the west line of Lot 26, S 07°-04'-58"E, a distance of 40.00 feet to a point at the TRUE POINT OF BEGINNING, passing a 5/8 inch iron rod found at 39.81 feet.

THENCE, with the westerly lines of the Steven J. Neeley 0.154 acre tract (O.R. 754, Pg. 376, Tract II), the following two courses:

S 07°-04'-58"E, a distance of 40.17 feet to a 1/4 inch metal flathead screw found.

S 20°-12'-00"E, a distance of 18.00 feet to a point on the face of a concrete seawall, passing a MAG nail set at 17.65 feet.

THENCE, crossing the boat well, S 67°-03'-40"W, a distance of 11.84 feet to a point of the face of a concrete seawall.

THENCE, with the face of a concrete seawall, the following three courses:

S 61°-58'-12"W, a distance of 18.14 feet to a point.

S 60°-51'-19"W, a distance of 14.68 feet to a point.

S 55°-19'-00"W, a distance of 2.39 feet to a point.

THENCE, with the west line of Lot 27 and the east line of Lot 28 extended, N 07°-07'-39"W, a distance of 44.20 feet to a 5/8 inch iron rod found, passing a MAG nail set at 0.41 feet.

THENCE, with the south line of Lot 27, N 46°-11'-48"E, a distance of 49.92 feet to the point of beginning.

Containing 0.048 acre.

Property is subject to any and all previous easements and rights-of-way of record.

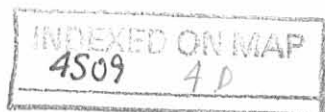
The basis for bearings is the south right-of-way of Poplar Street, being N 83°-09'-47"E, and all other bearings are from angles and distances measured in a field survey by Lee Surveying and Mapping Co., Inc. on October 29, 2012.



Description prepared by:

William K. Bruce

William K. Bruce
Professional Surveyor 7437
October 29, 2012



53971012

POPLAR STREET (35')

(BASIS FOR BEARINGS)
N 83°09'47" E

40.07'

E/P

LOT 27

20.1'

ATTACHED GARAGE
FF=997.80'

VALORI V. MILLER
O.R. 94, PG. 94

S 07°04'58" E
40.00'

SCALE
10

F E E T
T O
A N
I N C H



LEGEND:

- 5/8 INCH IRON ROD FOUND
- ⊙ 1/2 INCH IRON PIPE FOUND
- ⊕ 1/4 INCH METAL FLATHEAD SCREW FOUND
- MAG NAIL SET

ORCHARD ISLAND
PLAT CABINET A, SLIDE 219

N 07°07'39" W
70.02'

LOT 28

28.0'

1.2'

ONE-STORY CONCRETE BLOCK
RESIDENCE ON CRAWL SPACE
FF = 999.06'

1.2'

23.3'

46°11'48" E

49.92'

1.2'

5.7'

1.2'

11.5'

22.4'

CONCRETE

0.048 ACRE

N 07°07'39" W
44.20'

CONCRETE WALK AND SEAWALL
18.14'

14.68'

S 60°51'19" W

S 55°19'00" W

2.39'

LOT 26

S 07°04'58" E
40.00'

SEE DETAIL

S 07°04'58" E
40.17'

S 20°12'00" E
18.00'

S 67°03'40" W
11.84'

SEE DETAIL

S 61°58'12" W

INDIAN LAKE

DETAIL

NOT TO SCALE

STEVEN J. NEELEY
0.154 ACRE
O.R. 754, PG. 376
TRACT II

DETAIL

NOT TO SCALE

2 WORKING DAYS
BEFORE YOU DIG
CALL TOLL FREE 800-362-2764
OHIO UTILITIES PROTECTION SERVICE

5/8 INCH IRON
ROD FOUND
ELV. = 997.38

DETAIL

NOT TO SCALE

SURVEY OF 0.048 ACRE OUT OF THE
INDIAN LAKE RESERVOIR LANDS
SECTION 36, TOWN 6, RANGE 8
WASHINGTON TOWNSHIP
LOGAN COUNTY, OHIO



ORIGINAL STAMP IN GREEN

SURVEYED BY:

William K. Bruce
WILLIAM K. BRUCE
PROFESSIONAL SURVEYOR 7437
OCTOBER 29, 2012

COPYRIGHT 2012 BY:
LEE SURVEYING & MAPPING CO., INC.
117 North Madriver Street
BELLEFONTAINE, OHIO 43311
(937) 593-7335
WWW.LSMINC.US
surveys@lsminc.us

KSS D1012 53971012 L-5397-3

APPROVED

INDEXED ON MAP
4509 4P