

Survey Bd No 208
Washington Twp.

See Pt 552 pg 72

Stakes set for 60' B/W
from 33+59.6 to
60+13.0

47+00 Hubs set

39+00 Hubs set

34+00 Hubs set

4400

INDEXED ON MAP

23 June 47

Party:-

□ L. Keyson
↑ B. Haines
D. G. Shirk
Ch H. Keyson

61

Oakley A. Liner

Cons post

47+05

Harry E.

Barthauer

Wittig A. Shepard

180'

Marion F. Detrick

15' 46+00 8" catalpa

18' 44+50 10" Catalpa

30' 44+00 12" Catalpa

130' 43+78 12" Walnut

225' Drive 42+00

41+65

41+54

Cons post

41+57

Harry E.

Barthauer

See 4 72 R 14

Washington

Pleasant

20.6

44+65 12" catalpa

Marion F. Detrick

See 4 72 R 14

Township

Township

Stone found

Iron set

to 33+67.0

0°-8'-40" Right

(0°-17'-20")

71400 Hubs set

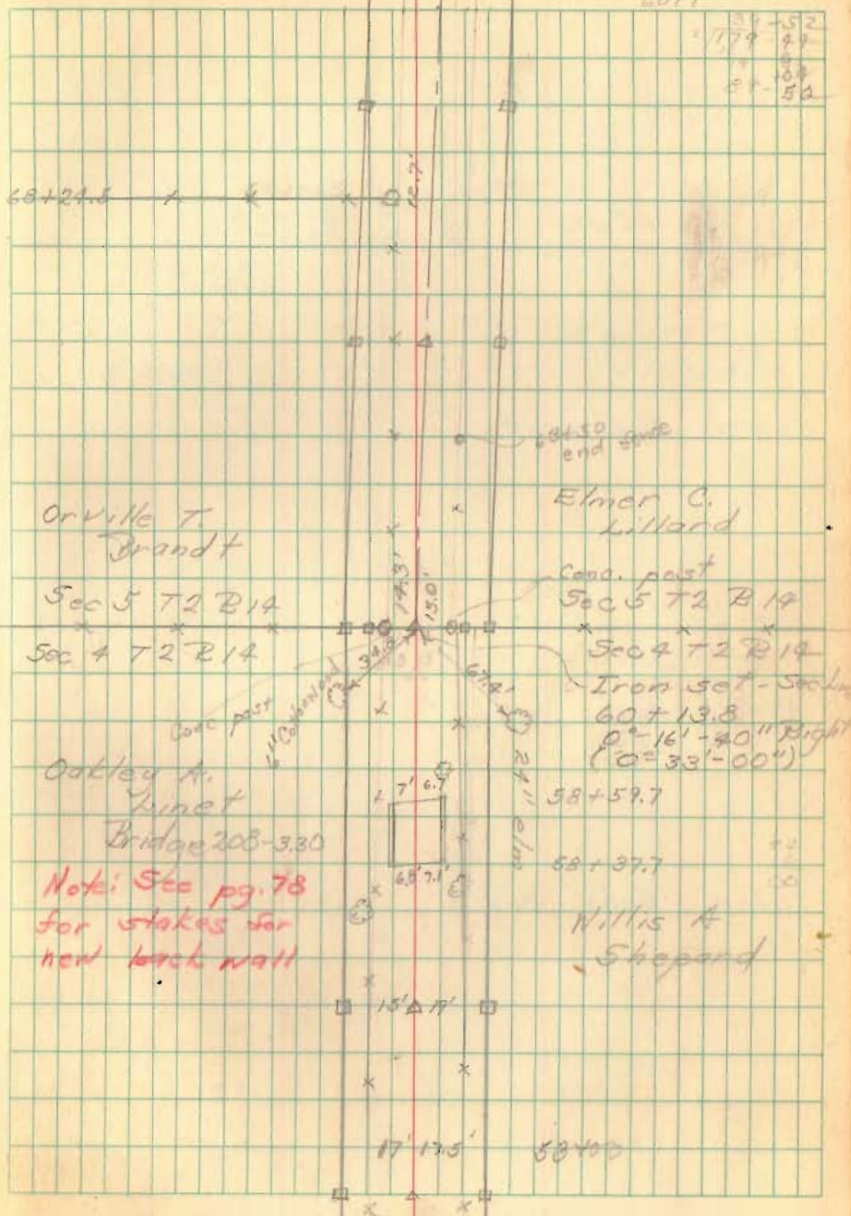
66400 Hubs set

60+13.8 Hubs set at 60' and 40'
 Staked 40' from 60+13.8
 to 87+07.25

57400 Hubs set

52400 Hubs set

1320
 1370
 12872
 3367
 6011



Rd 208 (contd)

86400 Hubs set

81400 Hubs set

76400 Hubs set

63

