

C.H. No. 91  
 R/W Mon. set @ 30' from E  
 Washington Twp.

10+00 R.R. Spike Set on E - R/W Mon. @ 30'

6+86.98 P.T. - R.R. Spike Set on E - R/W Mon. @ 30' - Rt. Only

P.I.  
 5+82.46 1" pin found -  $\Delta = 33^\circ - 46' - 40''$  Rt.

4+71.42 P.C. - R.R. Spike Set on E - R/W Mon. @ 30'

1+00 R.R. Spike Set on E - R/W Mon. @ 30'

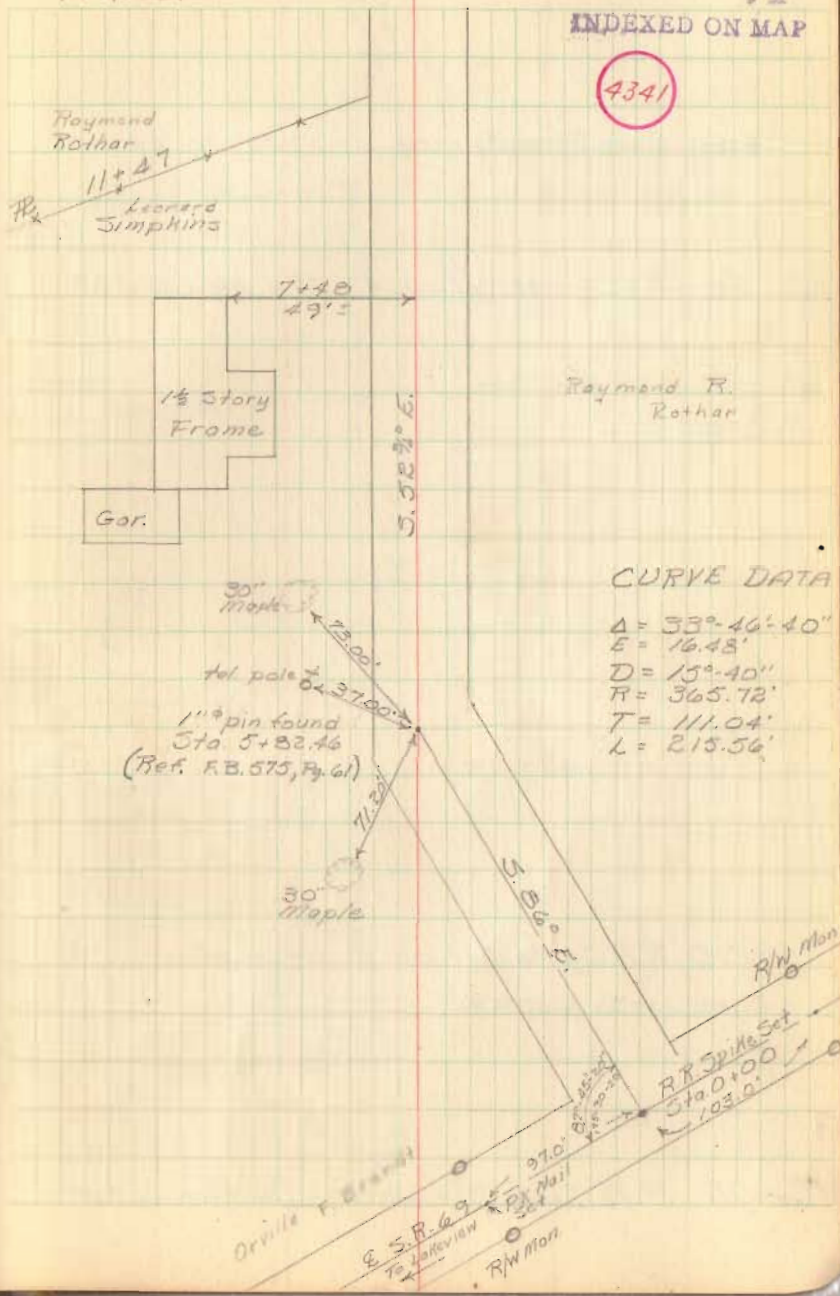
0+00 R.R. Spike Set

D. Tevis  
 T. Waldrop  
 P. Kaucher

6/16/64  
 65° 71'

INDEXED ON MAP

4341



CURVE DATA

$\Delta = 33^\circ - 46' - 40''$   
 $E = 16.43'$   
 $D = 15' - 40''$   
 $R = 365.72'$   
 $T = 111.04'$   
 $L = 215.56'$

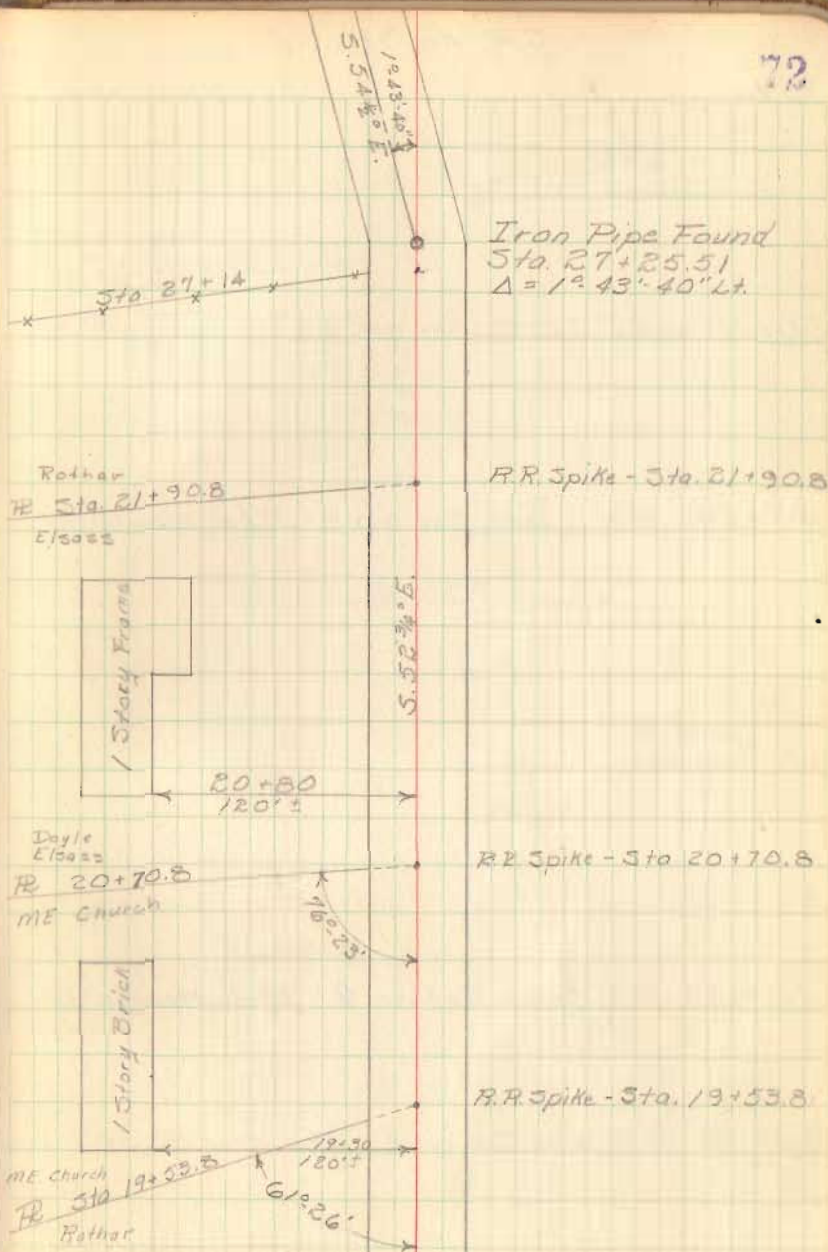
Sta.

27+25.51 Iron Pipe found -  $\Delta = 1^{\circ}43'40''$  Lt.

25+00 R.R. Spike Set on E - R/W Mon. @ 30'

20+00 R.R. Spike Set on E - R/W Mon @ 30'

15+00 R.R. Spike Set on E - R/W Mon. @ 30'



C.H. No. 91

Sta.

50+00 R.R Spike Set on E - R/W Mon @ 30'

45+00 R.R Spike Set on E - R/W Mon @ 30'

40+00 R.R Spike Set on E - R/W Mon @ 30'

35+00 R.R Spike Set on E - R/W Mon @ 30'

30+00 R.R Spike Set on E - R/W Mon @ 30'

J. Cira  
J. Cummins  
B. Bixler  
J. Cox

6/17/64

73

John Crockett

Sta. 51+31

Raymond Rother

Lillian Hoover

R.R. Sta. 50+98

Raymond Rother

5.54 ± 0.05

24" C.I.P. Sta 44+20

2 Story  
Frame

42+31

Barn

41+34

70+98.82 R.R. Spike Found - R.C.H. 54 - Lewistown Square.

70+00 R.R. Spike Set on E

65+00 R.R. Spike Set on E - R/W Mon. @ 30' Lt. only

60+00 R.R. Spike Set on E - R/W Mon. @ 30'

56+30.19  $\frac{5}{8}$ " pin found -  $\Delta = 2^{\circ} 03' 40''$  Rt.

55+00 R.R. Spike Set on E - R/W Mon @ 30' Rt. only

Sta. 0+00 of  
C.H. 91 Survey  
93 shown F.B. 502, P. 41R.R. Spike Found R.C.H. 54.  
Sta. 70+98.82