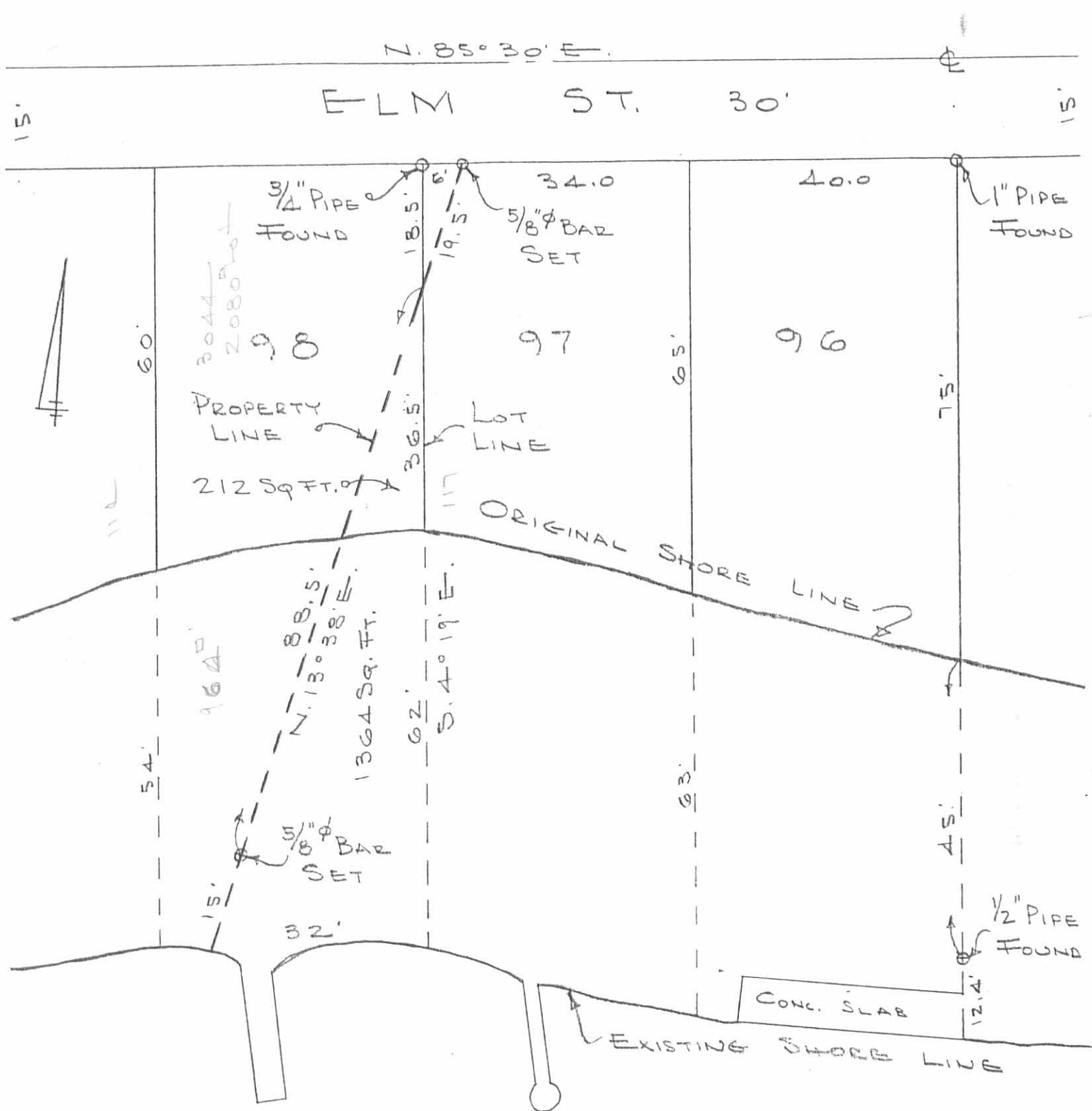


SURVEY OF
 LOTS 98-99-100
 ORCHARD ISLAND
 WASHINGTON TOWNSHIP
 MAY 7, 1960
 SCALE 1"=20'

Dan L. Dodson
 Dan L. Dodson
 Registered Surveyor
 No. 4270

INDEXED ON MAP
 2582
 INDEXED ON MAP



SURVEY OF
 LOTS 96-97 & 98 PART
 ORCHARD ISLAND
 WASHINGTON TOWNSHIP
 LOGAN COUNTY, OHIO
 SCALE 1" = 20'

2582^{2P}
 INDEXED ON MAP

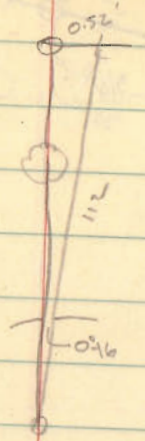
DAN L. DODSON
 REG. SURVEYOR 4270
 BELLEFONTAINE, O
 OCT. 15, 1977

Lot 98-99

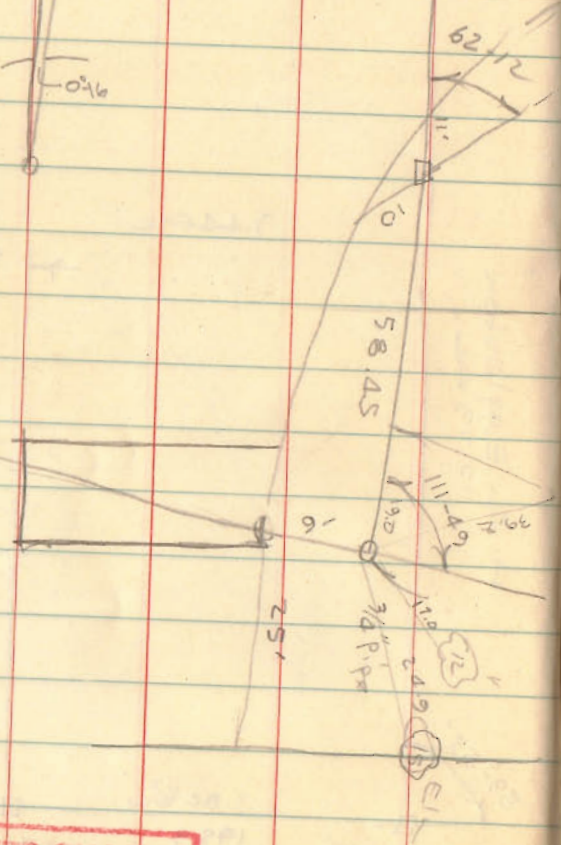
ORCHARD ISL.

5/7/60

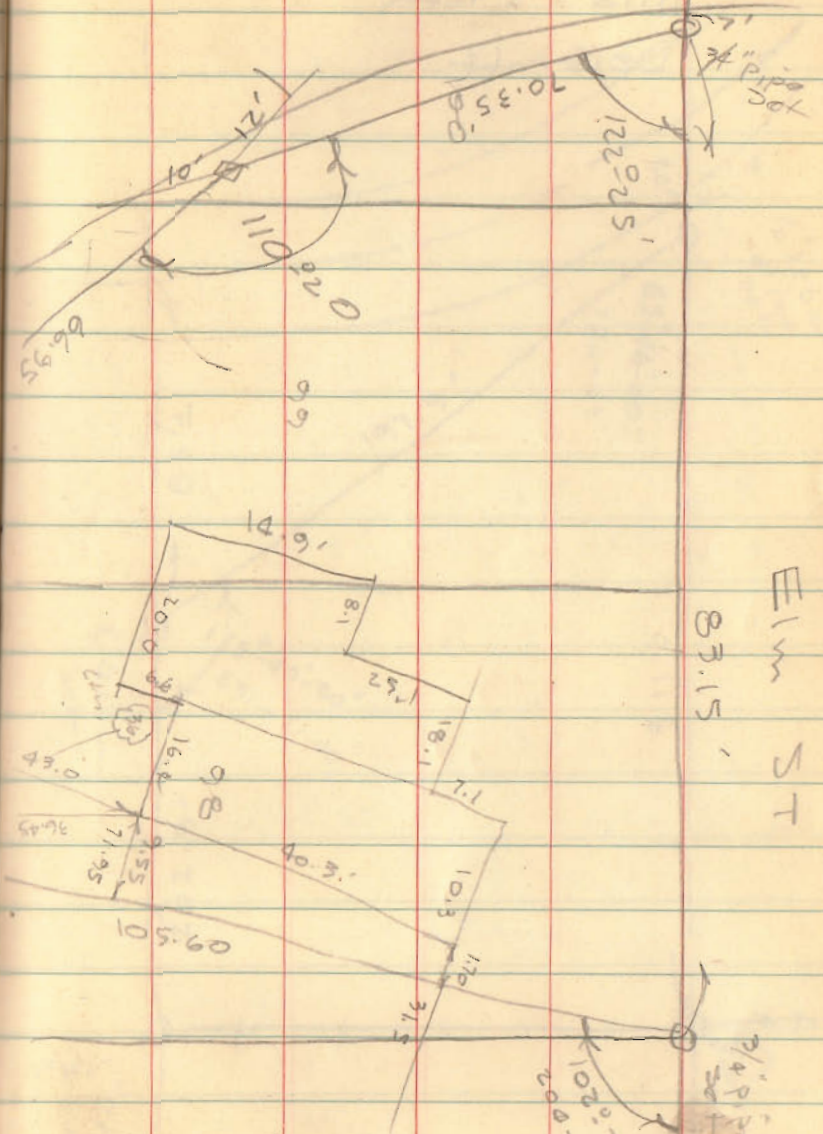
30000 - Good



.00465
112
00930
465
52080



INDEXED ON MAP
2582



EIM ST
83.15'

INDEXED ON MAP
2582