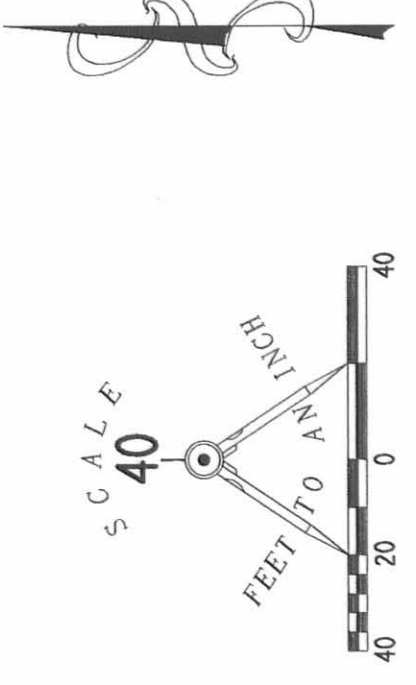




| CURVE | DELTA ANGLE | RADIUS | ARC | TANGENT | CHORD | CHORD BEARING |
|-------|-------------|---------|--------|---------|--------|-----------------|
| C 1 | 20° 11' 35" | 120.00' | 42.29' | 21.37' | 42.07' | N 06° 51' 36" E |
| C 2 | 24° 03' 24" | 105.00' | 44.09' | 22.37' | 43.76' | N 04° 55' 42" E |
| C 5 | 24° 03' 24" | 60.00' | 25.19' | 12.78' | 25.01' | N 85° 04' 18" W |
| C 6 | 90° 00' 00" | 25.00' | 39.27' | 25.00' | 35.36' | N 52° 06' 00" W |
| C 7 | 40° 00' 00" | 25.00' | 17.45' | 9.10' | 17.10' | N 27° 06' 00" W |
| C 8 | 40° 00' 00" | 25.00' | 17.45' | 9.10' | 17.10' | N 27° 06' 00" W |
| C 9 | 90° 00' 00" | 25.00' | 39.27' | 25.00' | 35.36' | N 37° 54' 00" E |
| C 10 | 90° 00' 01" | 33.00' | 51.84' | 33.00' | 46.67' | N 52° 06' 00" W |

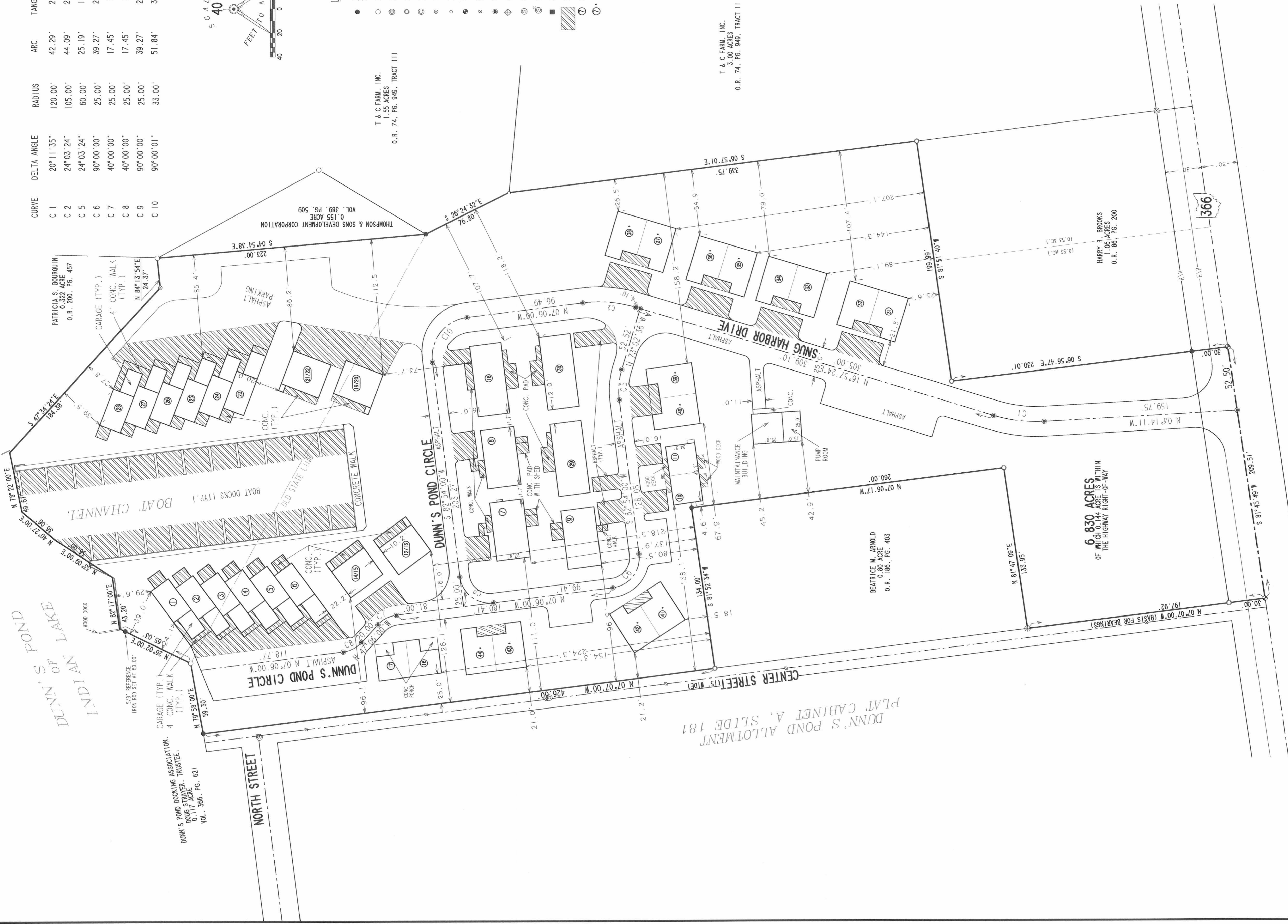


LEGEND

- 5/8" IRON ROD SET W/ PLASTIC I.D. CAP STAMPED "LEE P56559"
- 5/8" IRON ROD FOUND
- ⊗ 3/4" IRON ROD FOUND
- ⊙ 3/4" METAL PIPE FOUND
- ⊚ 1 1/4" METAL PIPE FOUND
- ⊛ 1" IRON BAR FOUND
- ⊜ 1/2" METAL PIPE FOUND
- ⊝ RAILROAD SPIKE SET
- ⊞ P. X. NAIL W/ SHINER FOUND
- ⊟ MAG NAIL SET
- ⊠ 3/4" SQUARE IRON BAR FOUND
- ⊡ SANITARY SEWER MANHOLE
- ⊢ SANITARY SEWER CLEAN-OUT
- ⊣ STORM SEWER CATCH BASIN
- ▨ LIMITED COMMON AREA
- ① UNIT NUMBERS
- ⊙ INDICATES BUILDING THAT ARE NOT YET COMPLETE

T & C FARM, INC.
1.55 ACRES, TRACT III
O.R. 74, PG. 948, TRACT III

T & C FARM, INC.
3.00 ACRES, TRACT II
O.R. 74, PG. 948, TRACT II



6.830 ACRES
OF WHICH 0.44 ACRES IS WITHIN
THE HIGHWAY RIGHT-OF-WAY

BEATRICE M. ARNOLD
0.80 ACRE
O.R. 186, PG. 403

HARRY D. BROOKS
10.53 ACRES
O.R. 86, PG. 200

SNUG HARBOR CONDOMINIUM AT DUNN'S POND AMENDMENT NUMBER 3

6.830 ACRES
VIRGINIA MILITARY SURVEY 9925-9946-10121
PLAT CABINET B, SLIDES 498 -508
WASHINGTON TOWNSHIP
LOGAN COUNTY, OHIO

ALL OF THE
DUNN'S POND ASSOCIATES, LTD.
ORIGINAL 6.830 ACRES
OFFICIAL RECORD 272, PAGE 238
WE DO HEREBY STATE THAT THIS DRAWING OF SNUG HARBOR CONDOMINIUMS
SHOWS ALL BUILDINGS AS CONSTRUCTED.



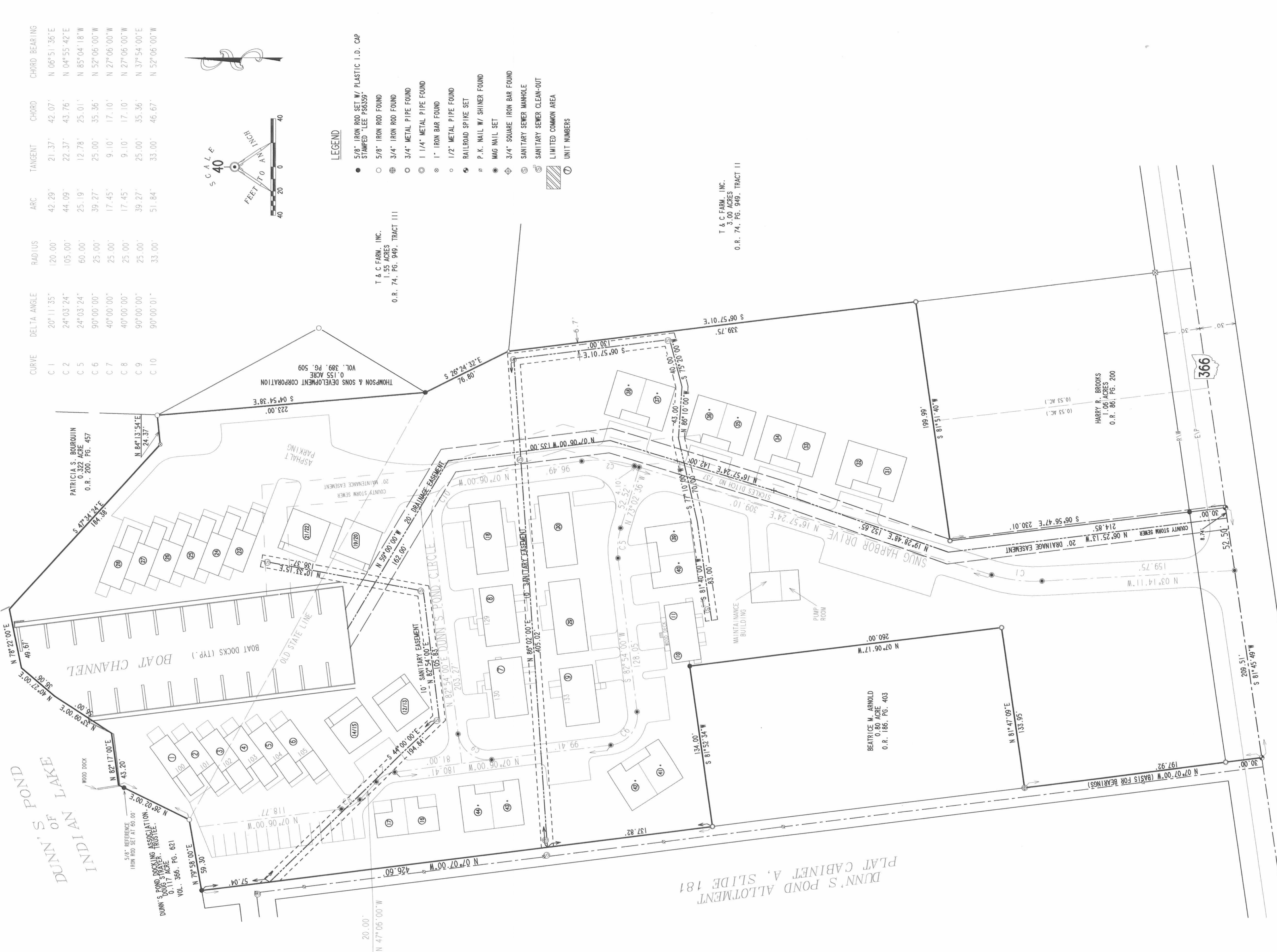
Michael W. Bow
MICHAEL W. BOW
PROFESSIONAL ENGINEER 38860
JANUARY 7, 2002
THE M & K ENGINEERING CO.
322 East Main Street
RUSSELLS POINT, OHIO 43348
(937) 842-2698



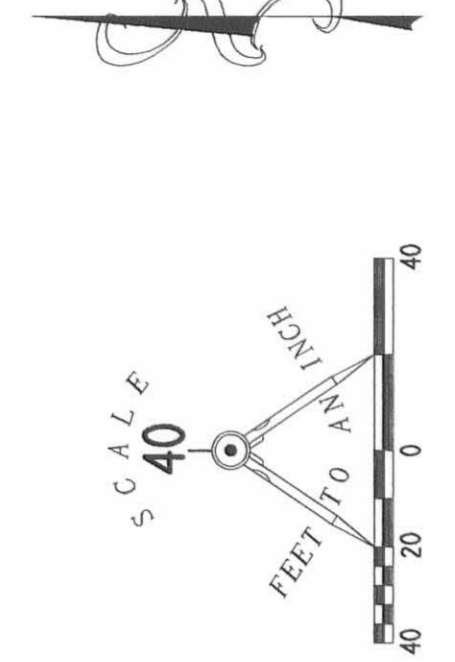
Jeffrey L. Lee
JEFFREY L. LEE
PROFESSIONAL SURVEYOR 6359
JANUARY 7, 2002
LEE SURVEYING & MAPPING CO., INC.
117 North Madriver Street
BELLEFONTAINE, OHIO 43311
(937) 593-7335

APPROVED BY THE L.U.C. PLANNING COMMISSION
THIS 21 DAY OF February, 2002.
DIRECTOR, PLANNING COMMISSION
PRE-APPROVAL
PLAT CHECKED
TRANSFERRED THIS 21st DAY OF February, 2002.

Auditor: Logan County, Ohio
RECORDED IN PLAT CABINET B, SLIDE 12.B - 73.B
RECEIVED FOR RECORD AT 10:53 O'CLOCK A.M.
THIS 21st DAY OF February, 2002.
RECORDER: Logan County, Ohio



| CURVE | DELTA ANGLE | RADIUS | ARC | TANGENT | CHORD | CHORD BEARING |
|-------|-------------|---------|--------|---------|--------|---------------|
| C 1 | 20°11'35" | 120.00' | 42.29' | 21.37' | 42.07' | N 06°51'36"E |
| C 2 | 24°03'24" | 105.00' | 44.09' | 22.37' | 43.76' | N 04°55'42"E |
| C 5 | 24°03'24" | 60.00' | 25.19' | 12.78' | 25.01' | N 85°04'18"W |
| C 6 | 90°00'00" | 25.00' | 39.27' | 25.00' | 35.36' | N 52°06'00"W |
| C 7 | 40°00'00" | 25.00' | 17.45' | 9.10' | 17.10' | N 27°06'00"W |
| C 8 | 40°00'00" | 25.00' | 17.45' | 9.10' | 17.10' | N 27°06'00"W |
| C 9 | 90°00'00" | 25.00' | 39.27' | 25.00' | 35.36' | N 37°54'00"E |
| C 10 | 90°00'01" | 33.00' | 51.84' | 33.00' | 46.67' | N 52°06'00"W |



LEGEND

- 5/8" IRON ROD SET W/ PLASTIC I.D. CAP STAMPED "LEE P56559"
- 5/8" IRON ROD FOUND
- ⊕ 3/4" IRON ROD FOUND
- 1 1/4" METAL PIPE FOUND
- ⊗ 1" IRON BAR FOUND
- 1/2" METAL PIPE FOUND
- ⚡ RAILROAD SPIKE SET
- ⊕ P.K. NAIL W/ SHINER FOUND
- ⊕ MAG NAIL SET
- ⊕ 3/4" SQUARE IRON BAR FOUND
- ⊕ SANITARY SEWER MANHOLE
- ⊕ SANITARY SEWER CLEAN-OUT
- ▨ LIMITED COMMON AREA
- ① UNIT NUMBERS

T & C FARM, INC.
1.35 ACRES
O.R. 74, PG. 948, TRACT III

T & C FARM, INC.
3.00 ACRES
O.R. 74, PG. 948, TRACT II

HARRY R. BROOKS
1.06 ACRES
O.R. 86, PG. 200

BEATRICE W. ARNOLD
0.90 ACRES
O.R. 186, PG. 403

EASEMENTS DRAWING
**SNUG HARBOR CONDOMINIUM
AT DUNN'S POND
AMENDMENT NUMBER 3**

6.830 ACRES
VIRGINIA MILITARY SURVEY 9925-9946-10121
PLAT CABINET B, SLIDES 49B-50B
WASHINGTON TOWNSHIP
LOGAN COUNTY, OHIO

ALL OF THE
DUNN'S POND ASSOCIATES, LTD.
ORIGINAL 6.830 ACRES
OFFICIAL RECORD 272, PAGE 238

