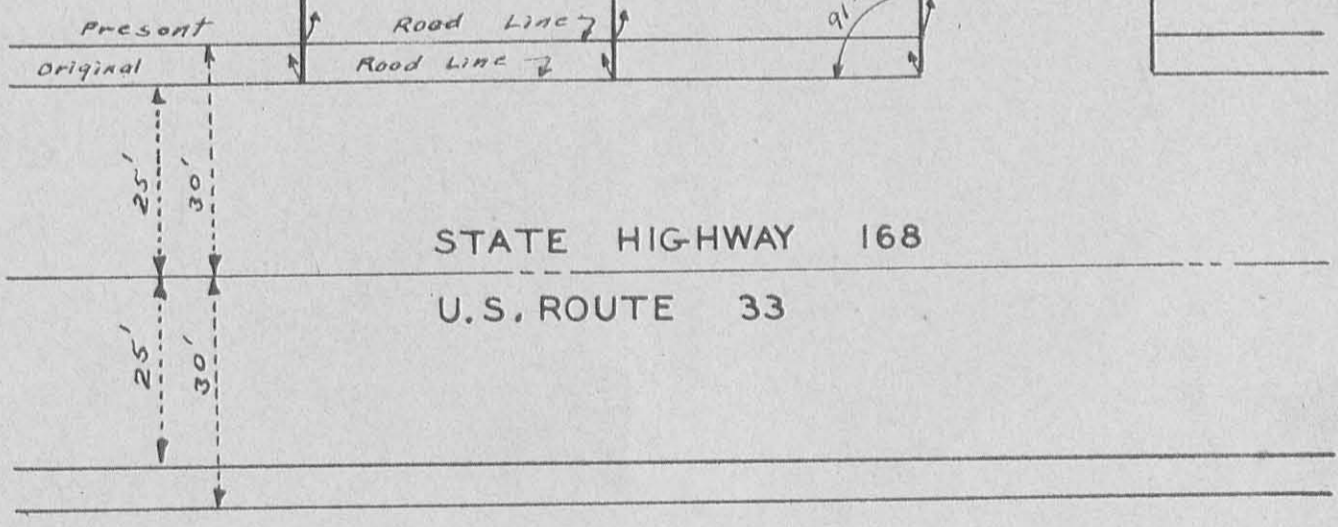
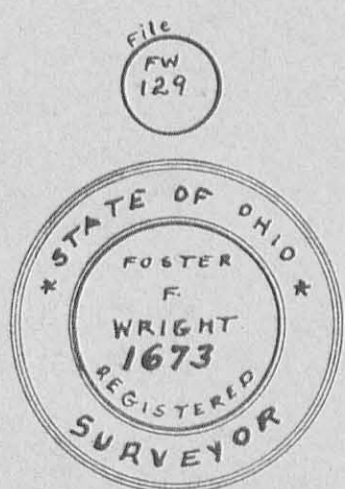


Lots 4 and 5
Surveyed Jan. 28 1950
South Half of Lot 6
Surveyed May 10 1952
Survey Notes
Book FW-20 Page 175



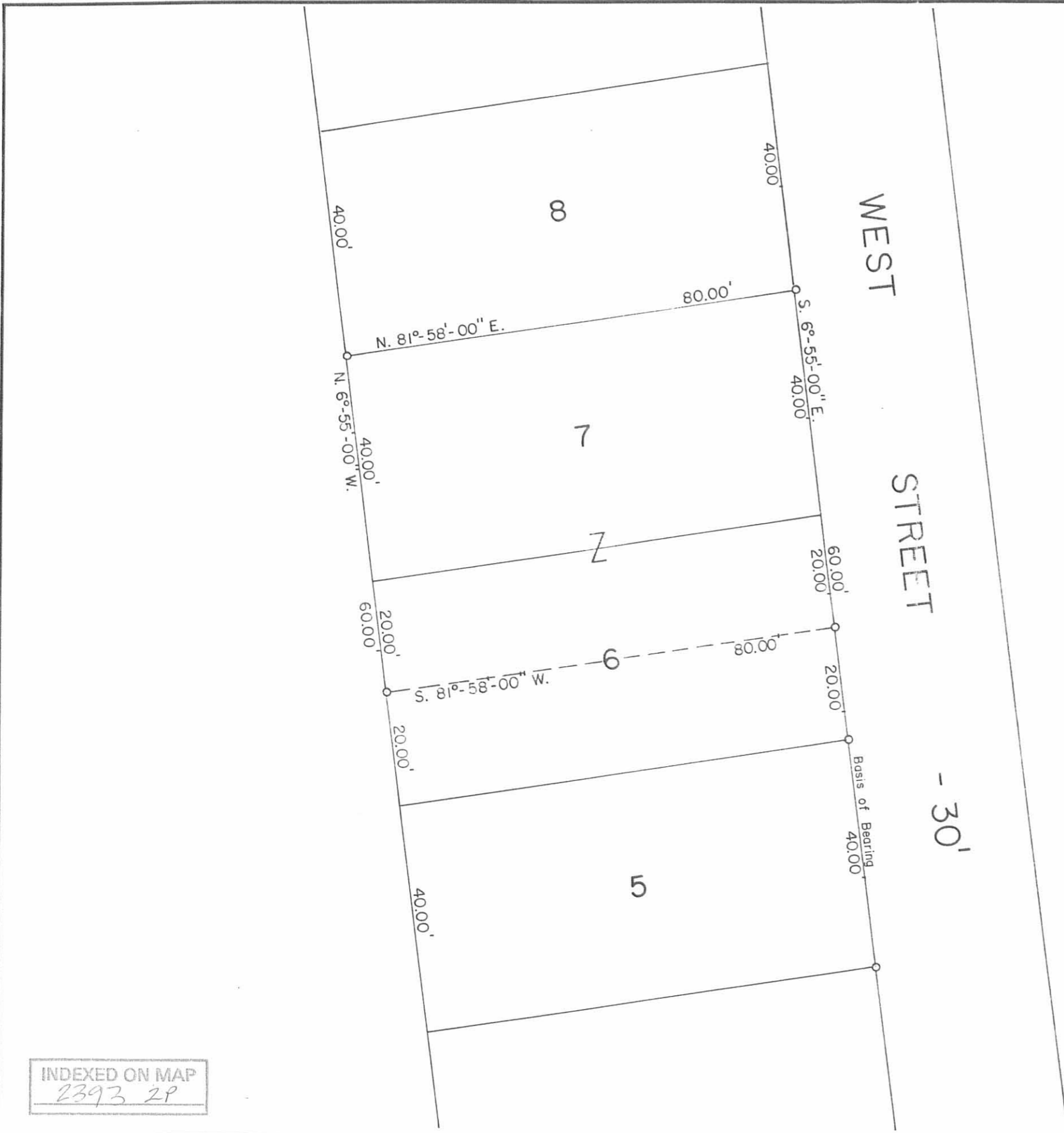
TOLAND SURVEY
DUNNS POND.
WASHINGTON TOWNSHIP
LOGAN COUNTY OHIO
1" = 25'
F. F. WRIGHT
SURVEYOR

INDEXED ON MAP



2393 1P

REC'D 7-28-95 S.M.Y. OK



N



Scale: 1" = 20'



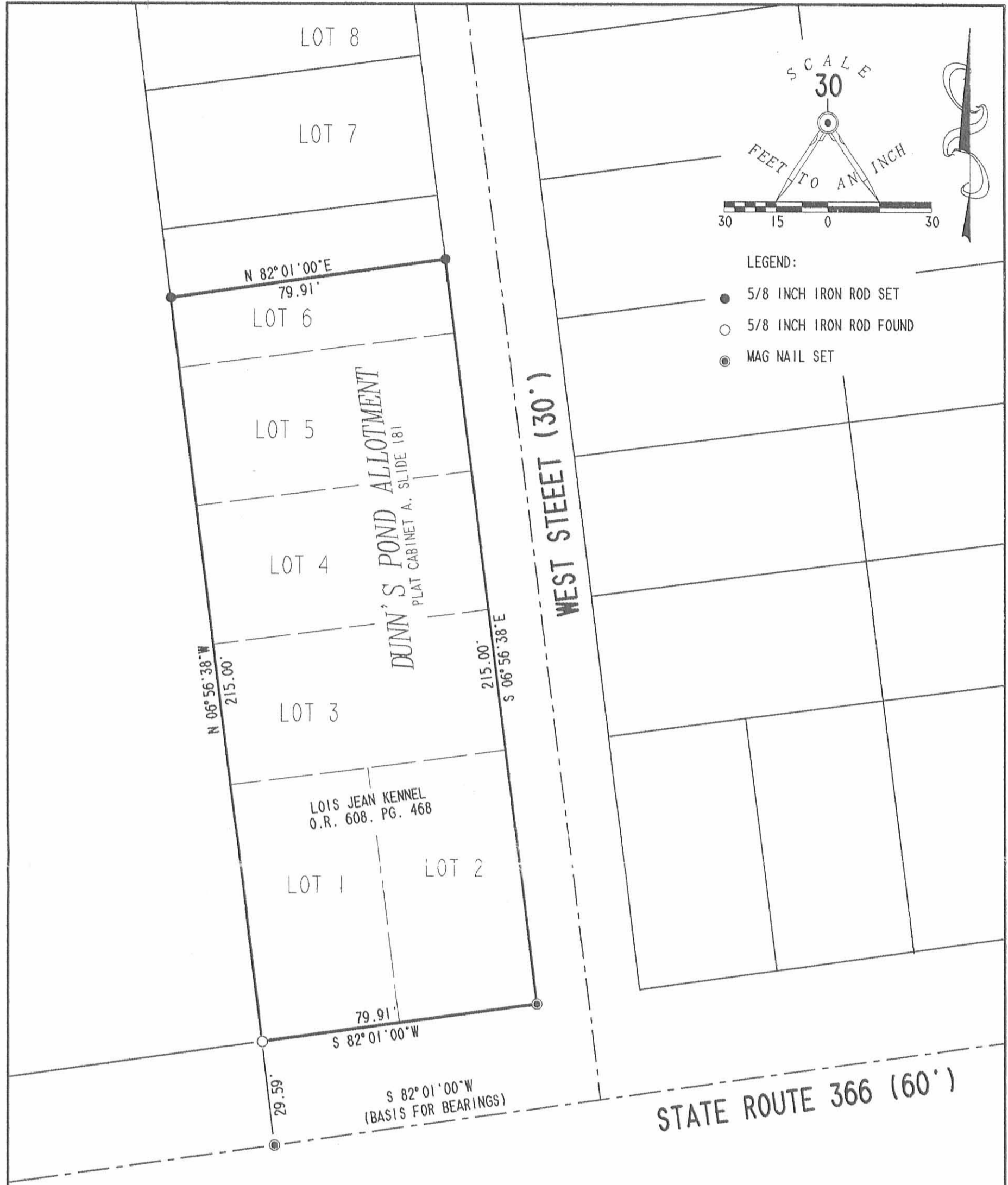
Reference:
 Dunn's Pond Allot. (8-1924)
 Plat Cab. A Slide 181.

o - 3/4" Iron Pipes Fd.

Dunlevy Survey - Lots No. 6 part and 7, Dunn's Pond Allotment, Washington Township, Logan County, Ohio.		
SCALE: 1" = 20'	APPROVED BY:	DRAWN BY DEG
DATE: 7-19-1995		REVISED
 Daniel E. Gilbert, P.S. Reg. Sur. No. 5402		DRAWING NUMBER 095-033

INDEXED ON MAP
 2393 2P

RCD 9-4-03 SMM OK



RETRACEMENT SURVEY OF THE
LOIS JEAN KENNEL
LOTS 1, 2, 3, 4, 5 AND PART OF LOT 6
OFFICIAL RECORD 608, PAGE 468
DUNN'S POND ALLOTMENT
PLAT CABINET A. SLIDE 181
VIRGINIA MILITARY SURVEYS 10121,
9946, AND 9925
WASHINGTON TOWNSHIP
LOGAN COUNTY, OHIO

INDEXED ON MAP
2393 3P

2 WORKING DAYS
BEFORE YOU DIG
CALL TOLL FREE **800-362-2764**
OHIO UTILITIES PROTECTION SERVICE.

STATE OF OHIO
JEFFREY I. LEE
6359
REGISTERED PROFESSIONAL SURVEYOR
ORIGINAL STAMP IN GREEN

SURVEYED BY:
[Signature]
JEFFREY I. LEE
PROFESSIONAL SURVEYOR 6359
AUGUST 26, 2003
COPYRIGHT 2003 BY:
LEE SURVEYING & MAPPING CO., INC.
117 North Madriver Street
BELLEFONTAINE, OHIO 43311
(937) 593-7335
D 410 WTNLSY3 L-3655-3

Lot 8-91

DUNNS POND ALLOT

- A = 1/2" pipe found E. side 24" Catolpha
- B = 3/4" pipe found (Bent)
- C = " " "
- D = 1/2" pipe found 8" E. of trip. Catolpha
- E = 1/2" pipe found 9" E. of 18" Catolpha
- F = 1/2" Bar found 14" E. root of 24" dbl. Catolpha
- G = 3/4" pipe found
- H = 3/4" " "
- I = " " "

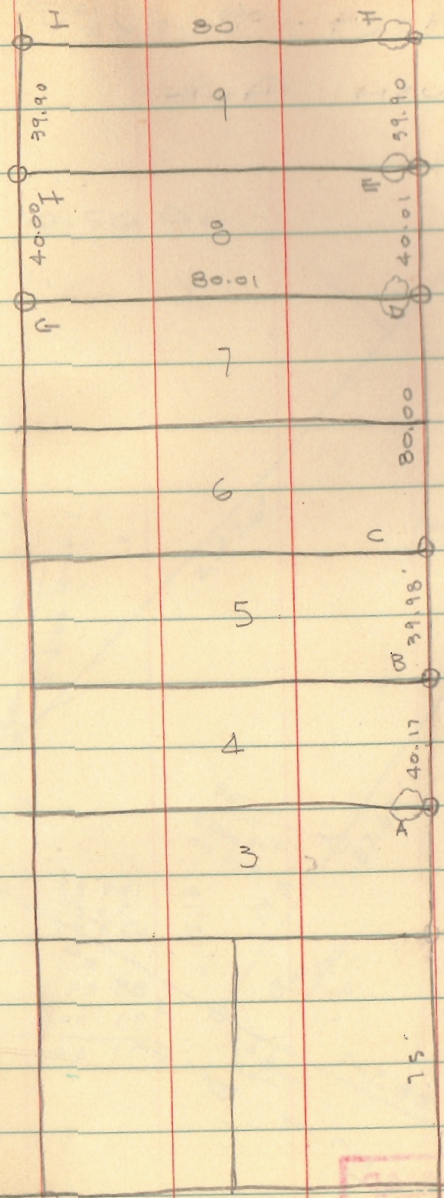
Angle

GIF = 91°00

ADG = 88°55'

INDEXED ON MAP
2393

4-18-64 5



INDEXED ON MAP
2393

Lot 1 & 2
Dunn's Pond Allot.

- A = Bolt Found 6" Deep
- B = 1" pipe Found S.E. Cor Lot 42
- C = 3/4" pipe Found 0.3' W. of line
- D = " " " N.W. Cor. lot 7
- E = 5/8" ϕ Bar Set on line A-D

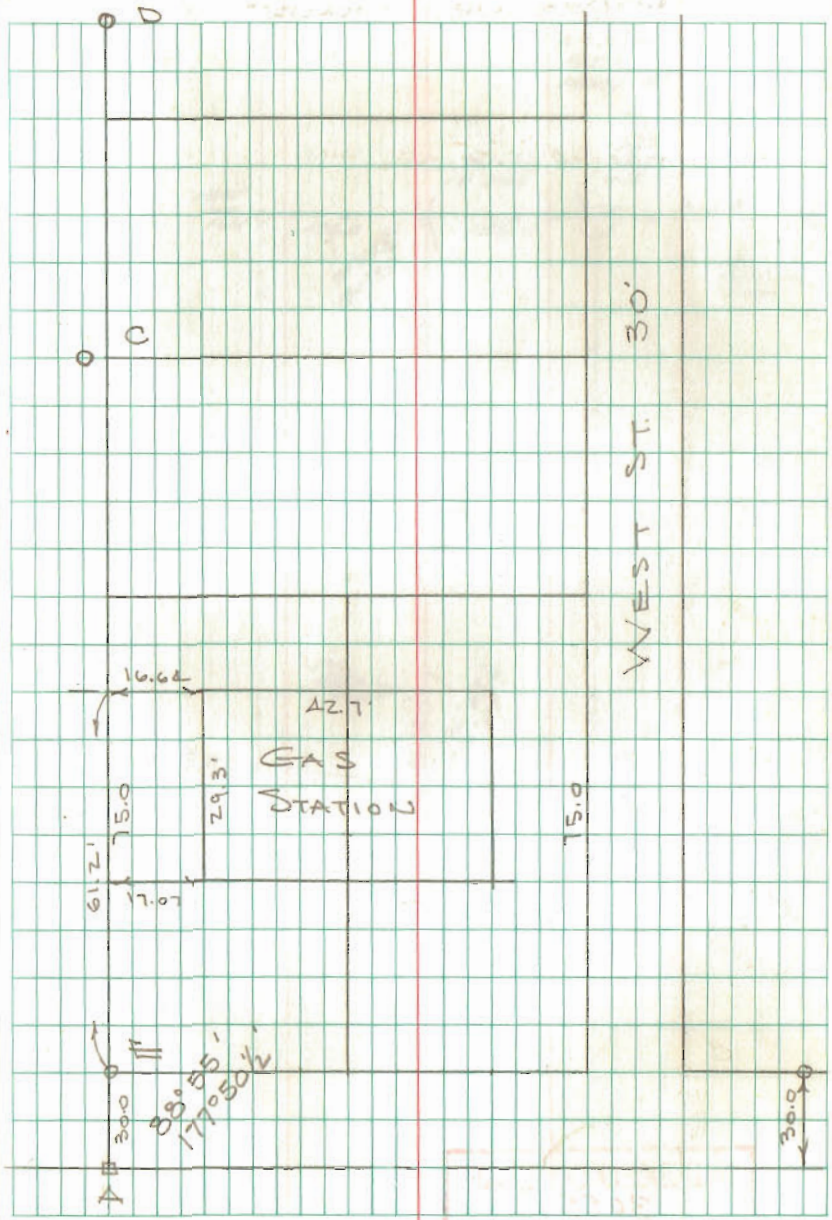
DIST E TO C = 115.00

Dunn's Pond Allot = J-27
PLAT BK B, Vol. 2, Pg. 78

Whitlow
Arts

12/18/71

67



INDEXED ON MAP
2393