

**Note:**

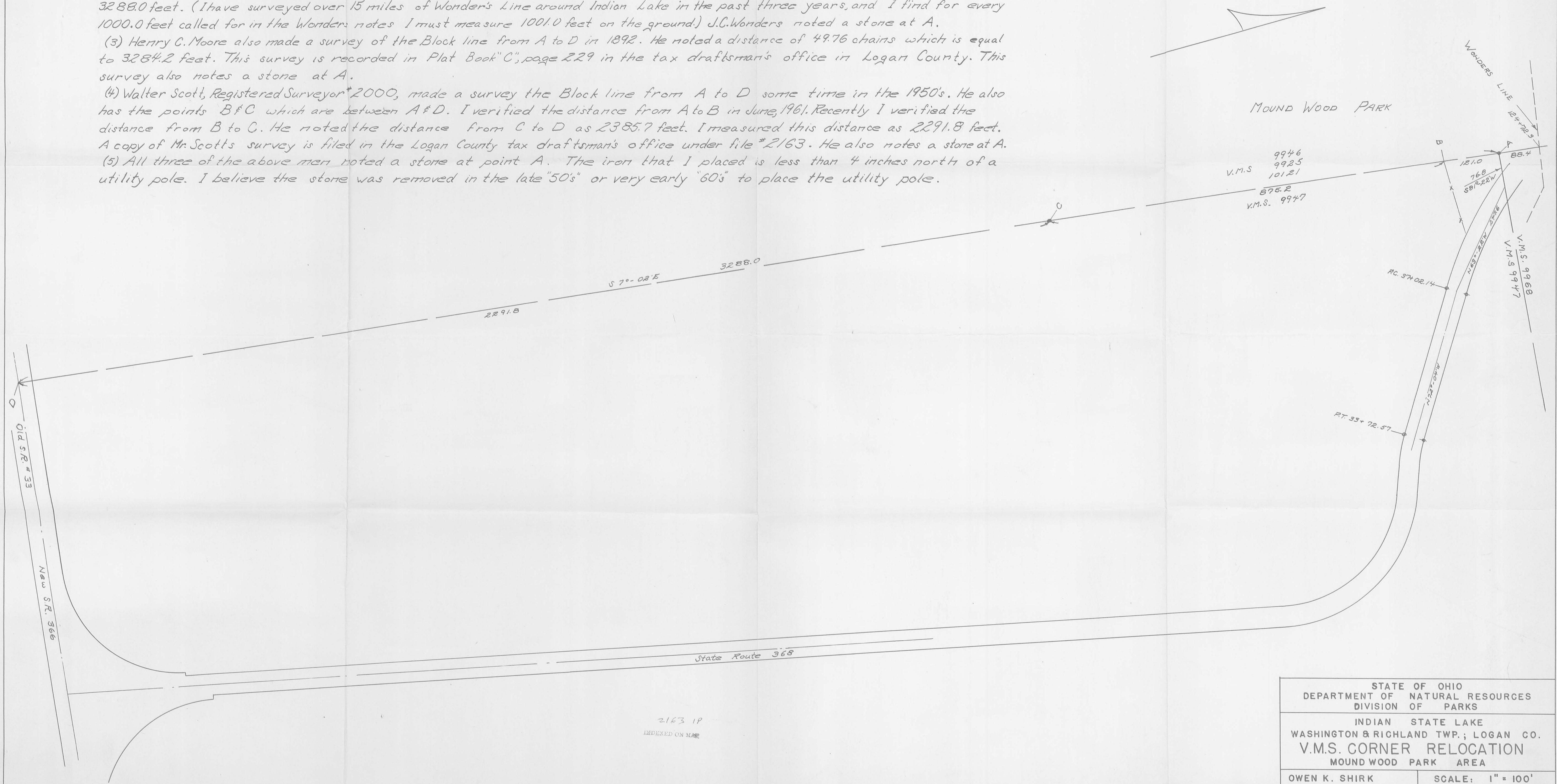
(1) I placed an iron at the Block corner marked "A" on the plat in June, 1961. I did this while rerunning a portion of the Wonders Line. Since then there has been some question as to the accuracy of the position of the iron at point "A", so I have prepared the below plat.

(2) J.C. Wonders made a survey of the Block Line from A to D in 1892. He noted the distance as 3284.6 feet. (A copy of his notes are in the Division of Parks Office in Columbus, Ohio.) I remeasured this line and found this distance to be 3288.0 feet. (I have surveyed over 15 miles of Wonders Line around Indian Lake in the past three years, and I find for every 1000.0 feet called for in the Wonders notes I must measure 1001.0 feet on the ground.) J.C. Wonders noted a stone at A.

(3) Henry C. Moore also made a survey of the Block line from A to D in 1892. He noted a distance of 49.76 chains which is equal to 3284.2 feet. This survey is recorded in Plat Book "C", page 229 in the tax draftsman's office in Logan County. This survey also notes a stone at A.

(4) Walter Scott, Registered Surveyor #2000, made a survey the Block line from A to D some time in the 1950's. He also has the points B & C which are between A & D. I verified the distance from A to B in June, 1961. Recently I verified the distance from B to C. He noted the distance from C to D as 2385.7 feet. I measured this distance as 2291.8 feet. A copy of Mr. Scott's survey is filed in the Logan County tax draftsman's office under file #2163. He also notes a stone at A.

(5) All three of the above men noted a stone at point A. The iron that I placed is less than 4 inches north of a utility pole. I believe the stone was removed in the late "50's" or very early "60's" to place the utility pole.



2163 1P  
INDEXED ON MAP

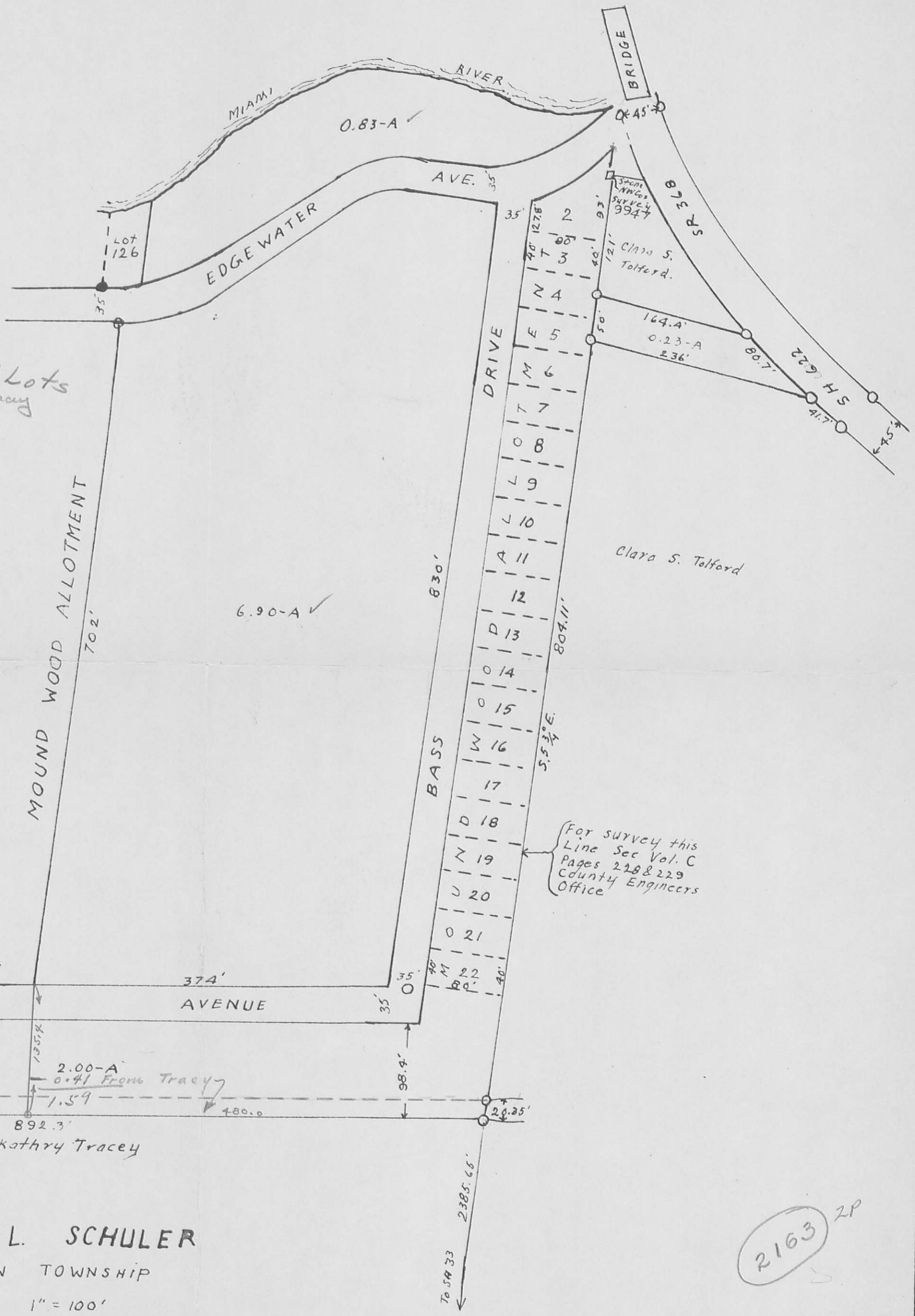
DECEMBER, 1964

STATE OF OHIO DEPARTMENT OF NATURAL RESOURCES DIVISION OF PARKS	
INDIAN STATE LAKE WASHINGTON & RICHLAND TWP.; LOGAN CO. V.M.S. CORNER RELOCATION MOUND WOOD PARK AREA	
OWEN K. SHIRK BELLEFONTAINE, OHIO SURVEYOR 4271	SCALE: 1" = 100'

0.83  
6.90  
1.5-9  
9.32 Acres  
.41 Streets & Lots  
9.73 & 0.41 from Tracy

The Road to U.S. 33 - 30' wide X 2385.65'  
= 1.64 Acres

*File*



**RUSSELL L. SCHULER**  
WASHINGTON TOWNSHIP  
SCALE 1" = 100'  
O Indicates Irons

2163 2P