

Baileys Surv.

Baileys Surv. Line A.

Start at stone in Roberts line - \angle d
and \angle 2 \angle Sim Horns land
thence with Roberts line

Course Roberts line = \angle 2 $1\frac{1}{4}$ \angle W 5
 \angle 2 $1\frac{1}{4}$ \angle W

S $21\frac{1}{4}$ \angle = 3-5-25 = 71 poles to
old \angle White Oak

\angle 6 \angle W \angle Putterbaugh = noted on
west post of \angle White Oak also

Back ash 24" \angle 74 W 45 links

Line cee + dist line a = S $21\frac{1}{4}$ \angle 71 poles
= d to e

(1845)

INDEXED ON MAP

Baileys Surv.

7

Line B. Start at sent
pike \angle W \angle Dickson = \angle m
course of pike S $80\frac{3}{4}$ W
thence \angle W $8\frac{1}{2}$ W 6 poles to S E
 \angle Bailey + \angle 2 \angle Dunn = \angle f
 (with Ash 24" S 22 W $11\frac{3}{4}$ links
 also W. O. \angle 89 W 39 "
 and a B. W. Stake at the \angle

Line c start at stone \angle f thence
with \angle line Wright + Kuhns \angle line Dunn
S $56\frac{1}{2}$ W or $56\frac{1}{4}$

Red stake in line at 16 poles

Being S $56\frac{1}{2}$ W 35 links from center
of pike

Pass fence S W \angle 32 at 61 poles

(1845)

INDEXED ON MAP

1845

Line C. INDEXED ON MAP

Line C. remeasure from
 \angle S 56 $\frac{1}{2}$ W, pass center
 of pipe at 14.6 poles

Set stake in line at \angle to Durr &
 Wagner at 65.60 poles being 57 poles
 from crossing Durr's line & pipe
 Set stake \angle to Durr & Bailey at
 96.10 poles

Set stake in line at 258 poles
 then set \angle 15 links

more \angle 35 "

Strike 27 links north of \angle tree
 on Roberts line, Variation 2, 3
 links too much north.

Dist to \angle tree = 16-0-24 = 330.90

At about 200 poles pass \angle to \angle 1
 di 2.2 links north

At about 250 poles pass 19 links \angle of
 line to the Oak

Set \angle E \angle to Pittsborough
 + S W \angle to Benj Bailey = \angle f
 then find old marked line across
 meet it 2 S 56 $\frac{1}{2}$ W 24 links then
 \angle 33 $\frac{1}{2}$ W 17 links, from first
 line run three departures from first
 line at Pittsborough \angle 17 links
 W. S E \angle Pittsborough = \angle f =
 Burr Oak \angle 87 $\frac{1}{4}$ W 118 links
 also \angle 89 $\frac{1}{2}$ 31 $\frac{1}{2}$ links }
 also B.O. \angle 9 W 85 links

INDEXED ON MAP

1845

Line D Start at stake 32
 Pittsborough + S W \angle Bailey = \angle f
 then set \angle 9 $\frac{1}{4}$ W

Set stake in line at 100 poles
 also stake in line at 101.4 "

Strike east of \angle 12 links on line H
 then set \angle to \angle = \angle 9 $\frac{1}{2}$ W 101.40 poles
 on line H.

Baileys Surr

Line E, Start 26 links
 South $9\frac{1}{4}$ 2 from stake at 10.14
 thence $36\frac{1}{4}$ W
 set stake in line at 38 poles
this line not used

Find stake \leftarrow to Horn 25 links from
 marked ash 8.

1845

INDEXED ON MAP

Baileys Surr.

Line F. Start at stone at 2 \leftarrow
 to Horn in Rote line, thence
 in line of Horn on west
 at $64\frac{1}{2}$ E 12 poles to \leftarrow Putterbaugh

1845

INDEXED ON MAP

Line G

thence from east of line F
 at $20\frac{3}{4}$ E 52 poles to \leftarrow to
 Putterbaugh pass center of pole at
 51.08 poles put in stake for
 end - line passes 1/2 of Putterbaugh's west
 gate post, at it above \leftarrow at 2 line F
 with testimony of \leftarrow in \leftarrow 2 marks
 may) at 15 E $64\frac{1}{2}$ links }
 also Dugan 16 at $41\frac{1}{2}$ E 174 links }
 Line G = at $20\frac{3}{4}$ E 52 poles

Baileys Surv.

Line H.

Start at stake NW \angle Putturbay
 at NW \angle line G, thence on line
 from NW \angle to stake in line G
 at 101.4 poles from SE \angle Bailey
 & NW $65\frac{3}{4}$ E 35 poles & put
 in stake \angle to Bailey & Putturbay
 Ring 12 links west of stake at NW
 line G i.e. at 101.4 poles

(Mit at E \angle line H = \angle Bailey & Putt)

9) Box Elder 18" NW $23\frac{3}{4}$ E 35 $\frac{1}{2}$ poles

(also Cottonwood 16" NW $80\frac{1}{2}$ or 131 links

1843

INDEXED ON MAP

Baileys Surv.

Line J; Start at stake at SW \angle 15

Dire 5a + SE \angle to Bailey at 96.1 poles
 of line E.

Mit above stake

W.O. 24" NW $48\frac{1}{2}$ E 23 $\frac{1}{2}$ links } = 1
 also W.O. 14" S $12\frac{1}{4}$ or 19 links

Thence on line H of Dire + E of Bailey

NW $9\frac{1}{4}$ or = 1-6-110 = 33.60 poles
 to stone set in center of pike & \angle

1845

1845

INDEXED ON MAP

Baileys Durr

Line G

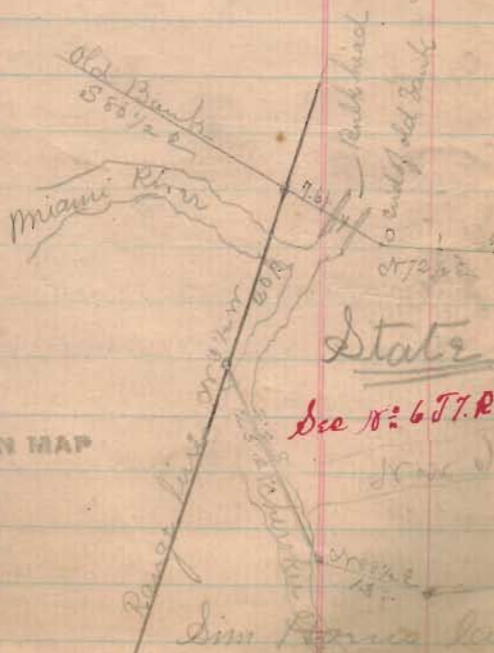
Start S 8 links S 9 1/4 E from
N 2 < Putterbaugh at C. E. line H
Thence with center of pipe

N 80 3/4 E = 7-4-25 = 149.50

to < in pipe at N W 2 to Durr

& return and Durr <

Line K. Start at stone cent. pipe N W 2 Durr. Thence
N 80 3/4 E = 1-3-45 = 27.50 poles to the Durr of Oregon



1845

INDEXED ON MAP

Baileys Durr

Line G

Start cent. pipe < to Wagner + Durr

S 9 1/4 E 1-0-26 links = 21.04

to stake set at 65.6 poles of line G.

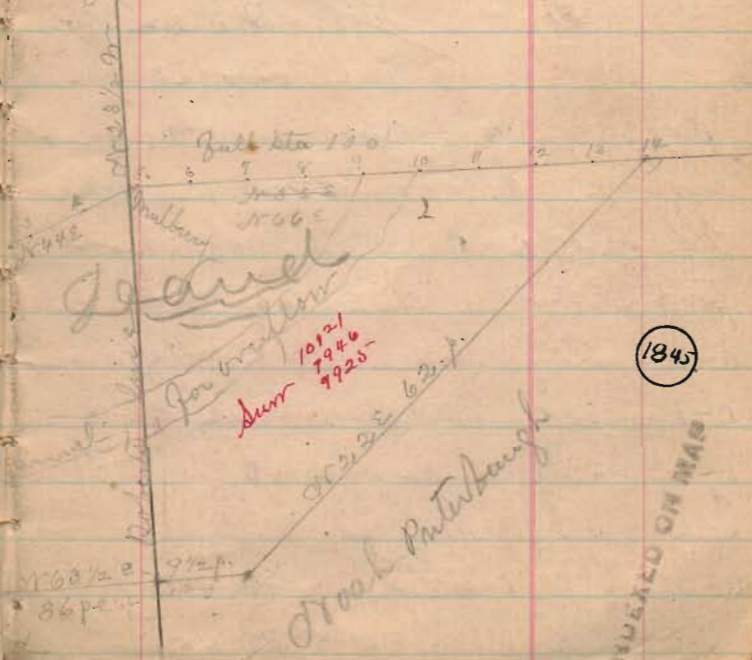
Below is given a true copy of plat made

by J. B. M. Deaughline 1876 from his field

notes taken in survey of lands about the Bull

head at town Leovictoria, Oregon was en-

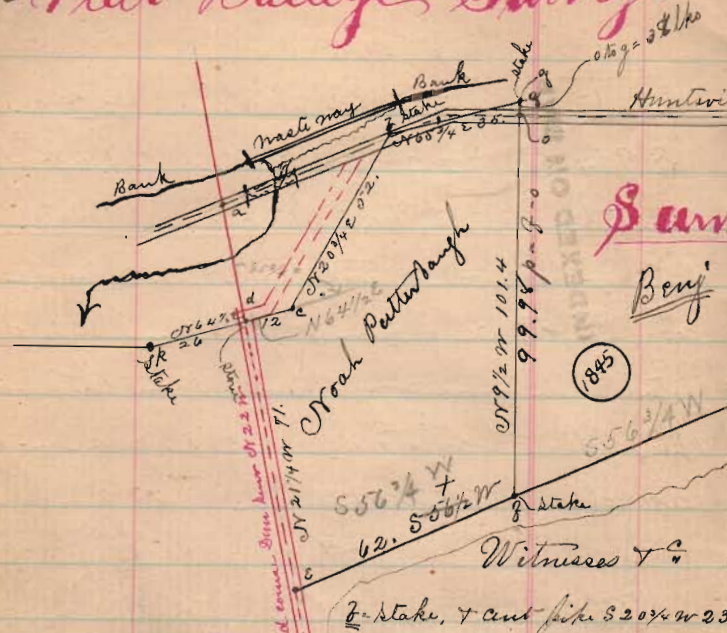
larged. At Buchanan



1845

INDEXED ON MAP

16 Plat Bailey Survey.



Hunterville + Reservoir pike
 N 60 1/2 E 149 poles = o-h
 10121
 9946
 9925 = 62 15 a
 27.50
 S 50 W 20 1/2
 30.5 f.
 Stake
 556 3/4 W
 58 1/2 E
 885
 556 3/4 W
 62. 556 3/4 W
 Stake
 Witnessed & C
 f - Stake, + cut pike S 20 1/2 W 23
 g - Cottonwood 16" N 15 E 64 1/2
 n - j = " B. } + also aug. 16" N 81 1/2 E 17 1/4
 j - e = " C } C = post N 64 1/2 E 12 poles from d
 f - g = " d } d = stone in Robt's line, 1/2 mi from Benn
 d - e = " f } Run 9 W. 14" N 57 3/4 W 43. + B. Mal
 c - d = " g } 16" N 9 1/4 W 27 + Mulling 9" S 53 E 18
 f - g = " h } course p-d = N 64 E 26 poles
 l - h = " i } f = Ash 6" S 5 W 24 links
 o - h = " j } e notch on east root of old L W. O. also
 h - i = " k } Blk Oak 24" N 74 W 45 links
 i - k = " l.

Surr.
Benj Bailey

162.80
 f - Burr Oak 24" N 87 1/4 W 118 also
 Elm 8" N 89 E 31 1/2 + B. O. 20" N 9 W 85
 g Cottonwood 16" N 80 1/2 W 131.2 + Box elder 18" N 23 3/4 E 35 1/2.
 j Ash 24" S 22 W 11 3/4 + White Oak N 89 W 39 links
 l = W. O. 24" N 48 1/2 E 23 1/2 + W. O. 14" S 12 1/4 W 19.
 m = post-cent pike 55 1/2 W 14.6 poles from j see line C.
 n = " " " 58 1/2 E 6 " " j " " B.
 h = stone center pike - to Bailey + Benn.
 o = post-cent pike 59 1/2 E 38 links from g.

The above plat shows line & corners
 as run and located in survey
 made for Benj Bailey
 April 4th to 5th 1882
 S A Buchanan

1845

INDEXED ON MAP

Lee Surveying and Mapping Co., Inc.

Land Surveys • Topography • Subdivisions • Construction Layout

117 N. Madriver St.
Bellefontaine OH 43311



Phone: (937) 593-7335
Fax: (937) 593-7444
surveys@lsminc.us

STEPHENSON, TRUSTEE 4.727 ACRES

Lying in Virginia Military Survey 9925, 9946 and 10121, Washington Township, Logan County, Ohio.

Being all of the Louise C. Stephenson, Trustee 5 acre tract as deeded and described in Official Record 460, Page 465, Parcel No. 2 of the Logan County Records of Deeds and being more particularly described as follows:

Commencing on a MAG nail found on the intersection of the center-lines of Township Road 95 and Ohio Route 366.

THENCE, with the center-line of Ohio Route 366 (60 feet wide), S 82°-02'-02"W, a distance of 992.65 feet to a MAG nail set at the TRUE POINT OF BEGINNING.

THENCE, with the west line of the Norman H. Krouse 0.55 acre tract (O.R. 231, Pg. 849), S 07°-52'-47"E, a distance of 347.14 feet to a 1 inch square iron bar found, passing a 5/8 inch iron rod set at 30.00 feet.

THENCE, with the north line of the Welcome Woods RV Campground LLC, 18.26 acre tract (O.R. 1014, Pg. 735, Parcel I), S 57°-49'-04"W, a distance of 503.25 feet to a 5/8 inch iron rod set.

THENCE, with the east line of the James Wesley Wickliff 1.8 acre tract (Vol. 341, Pg. 256), N 07°-36'-53"W, a distance of 553.75 feet to a MAG nail set on the center-line of Ohio Route 366, passing a 5/8 inch iron rod set at 523.57 feet.

THENCE, with the center-line of Ohio Route 366, N 82°-03'-21"E, a distance of 456.09 feet to the point of beginning

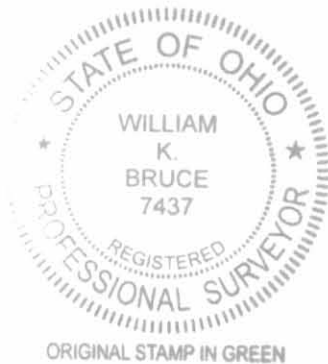
Containing 4.727 acres, of which 0.314 acre is within the highway right-of-way.

Property is subject to any and all previous easements and rights-of-way of record.

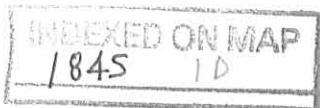
The basis for bearings is the center-line of Ohio Route 366, being S 82°-02'-02"W, and all other bearings are from angles and distances measured in a field survey by Lee Surveying and Mapping Co., Inc. on December 21, 2011.

Description prepared by:

William K. Bruce
Professional Surveyor 7437
December 22, 2011
Revised December 27, 2011

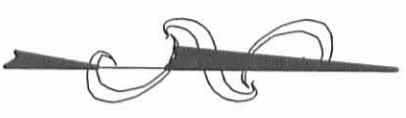
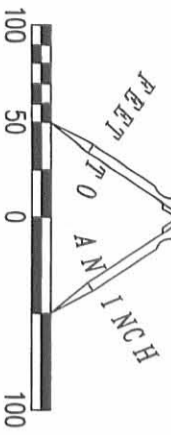


52461211R

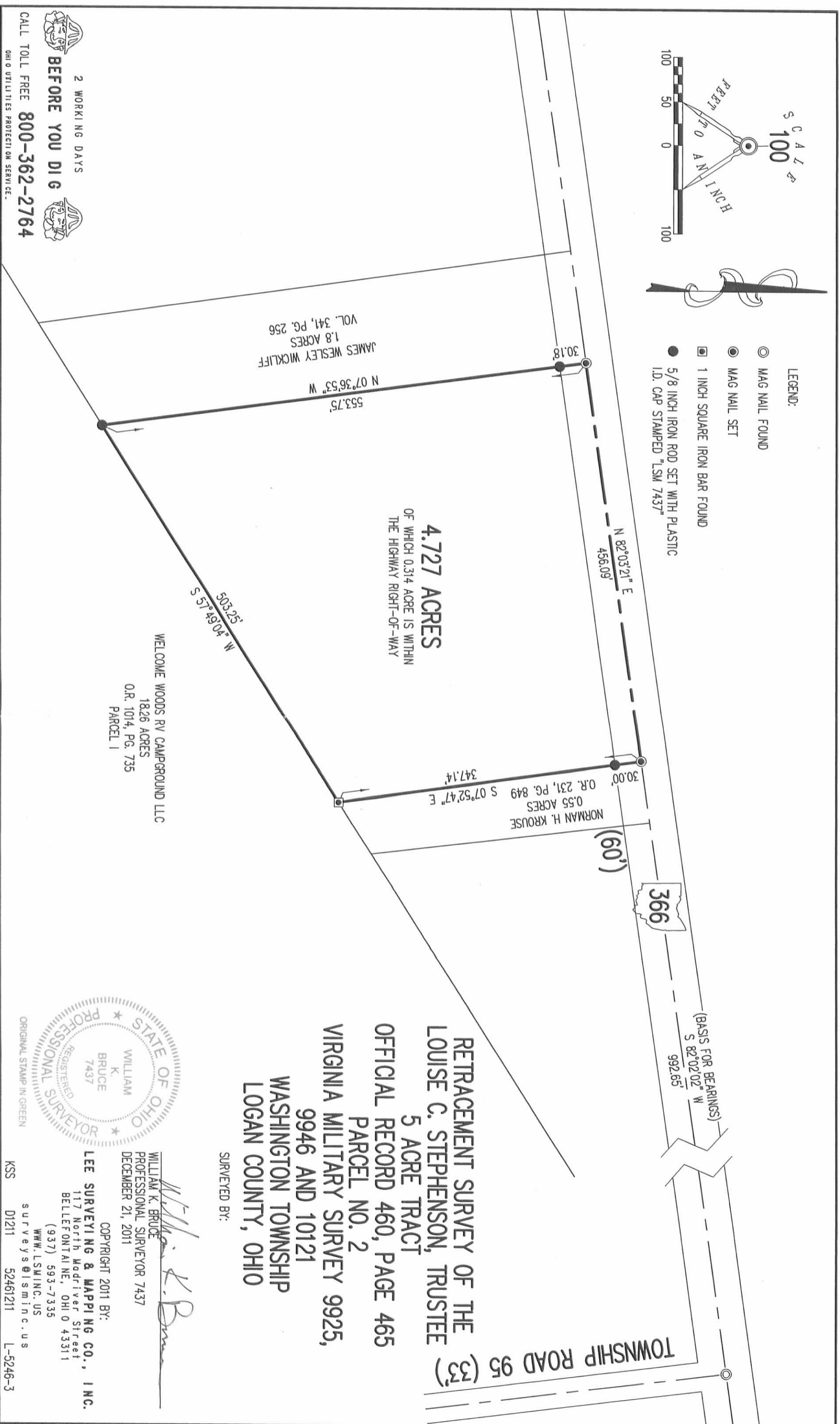


Road 12/27/11 04044

S C A L
100



- LEGEND:
- MAG NAIL FOUND
 - MAG NAIL SET
 - 1 INCH SQUARE IRON BAR FOUND
 - 5/8 INCH IRON ROD SET WITH PLASTIC I.D. CAP STAMPED "LSM 7437"



RETRACEMENT SURVEY OF THE
LOUISE C. STEPHENSON, TRUSTEE
5 ACRE TRACT
OFFICIAL RECORD 460, PAGE 465
PARCEL NO. 2
VIRGINIA MILITARY SURVEY 9925,
9946 AND 10121
WASHINGTON TOWNSHIP
LOGAN COUNTY, OHIO

SURVEYED BY:

William K. Bruce
WILLIAM K. BRUCE
PROFESSIONAL SURVEYOR 7437
DECEMBER 21, 2011



COPYRIGHT 2011 BY:
LEE SURVEYING & MAPPING CO., INC.
117 North Madriver Street
Bellefontaine, OH 43311
(937) 593-7335
www.lsminc.us

surveys@lsminc.us
KSS D1211 52461211 L-5246-3

2 WORKING DAYS
BEFORE YOU DIG

CALL TOLL FREE **800-362-2764**
OHIO UTILITIES PROTECTION SERVICE

INDEXED ON MAP
1845 1P