

Road 24

50' - Pike Record. - Young and Smith Pike 1880
Free Pike Record. No. 5 Page 335

144+00

For NW Fast
25' from

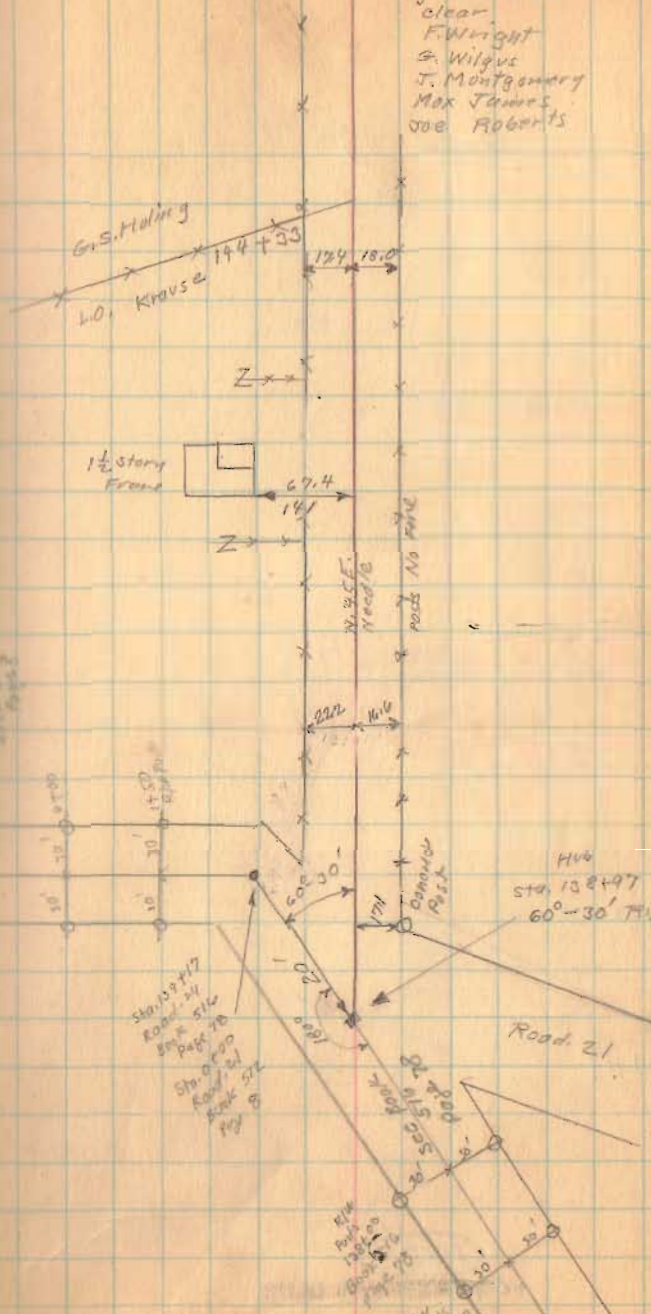
139+00

Road 21

1733

INDEXED ON MAP

Aug. 6-1936
clear
F. Wright
S. Wilgus
T. Montgomery
Max James
Joe Roberts



G.S. Mulling

L.O. Krause

144+33

174 18.0

1 1/2 story
Frame

67.4

Z

N. 35 E.
Needle

ROAD NO FINE

220

176

Hv6

Sta. 138497

60-30' height

Road 21

Sta. 138417
Road 24
Page 316

Sta. 138400
Road 24
Page 312

NW
Post
Sta. 138400
Page 316

NW
Post
Sta. 138400

Road 24

154+00

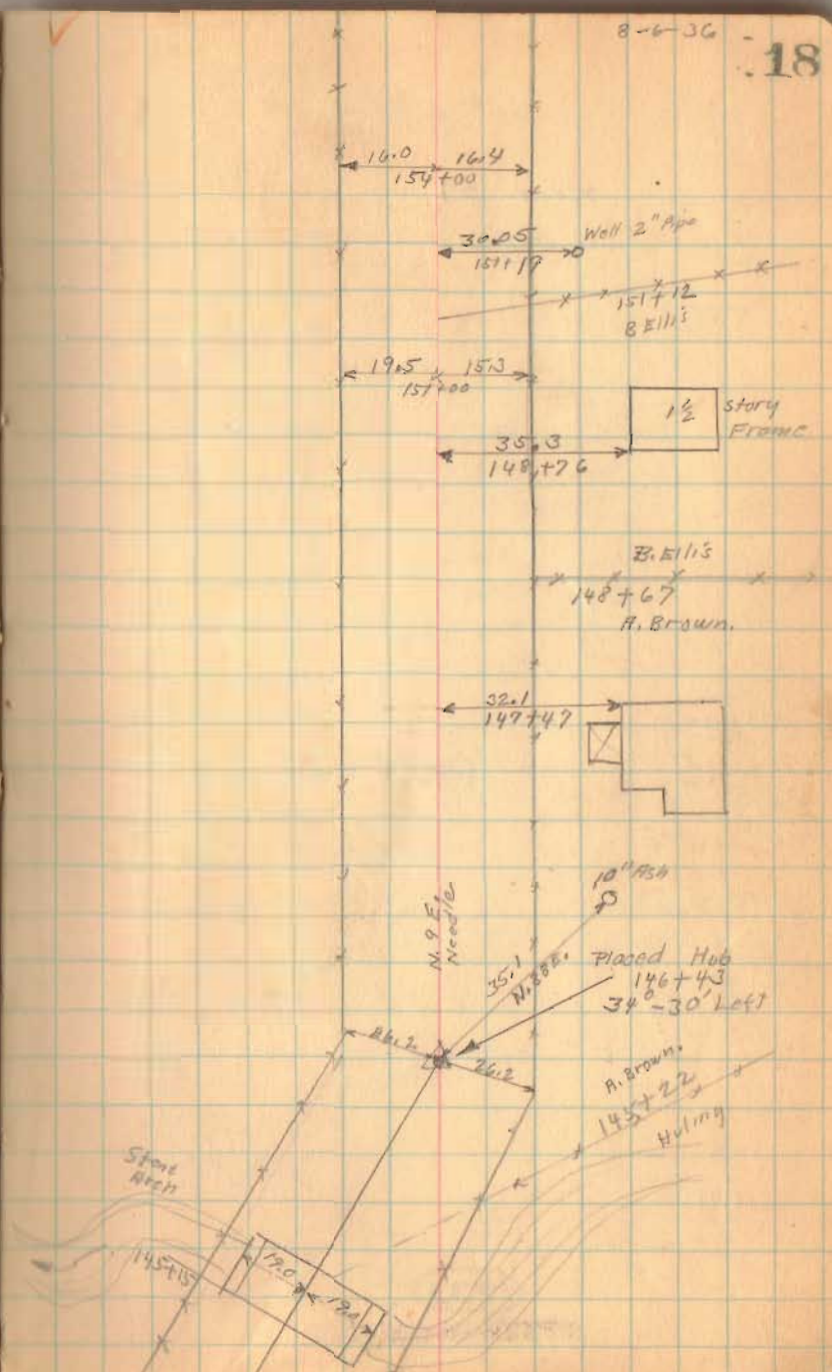
151+00

146+43

1733

INDEXED ON MAP

8-6-36 18



Road 24

170+00

163+25

159+00

1733

INDEXED ON MAP

Loggers

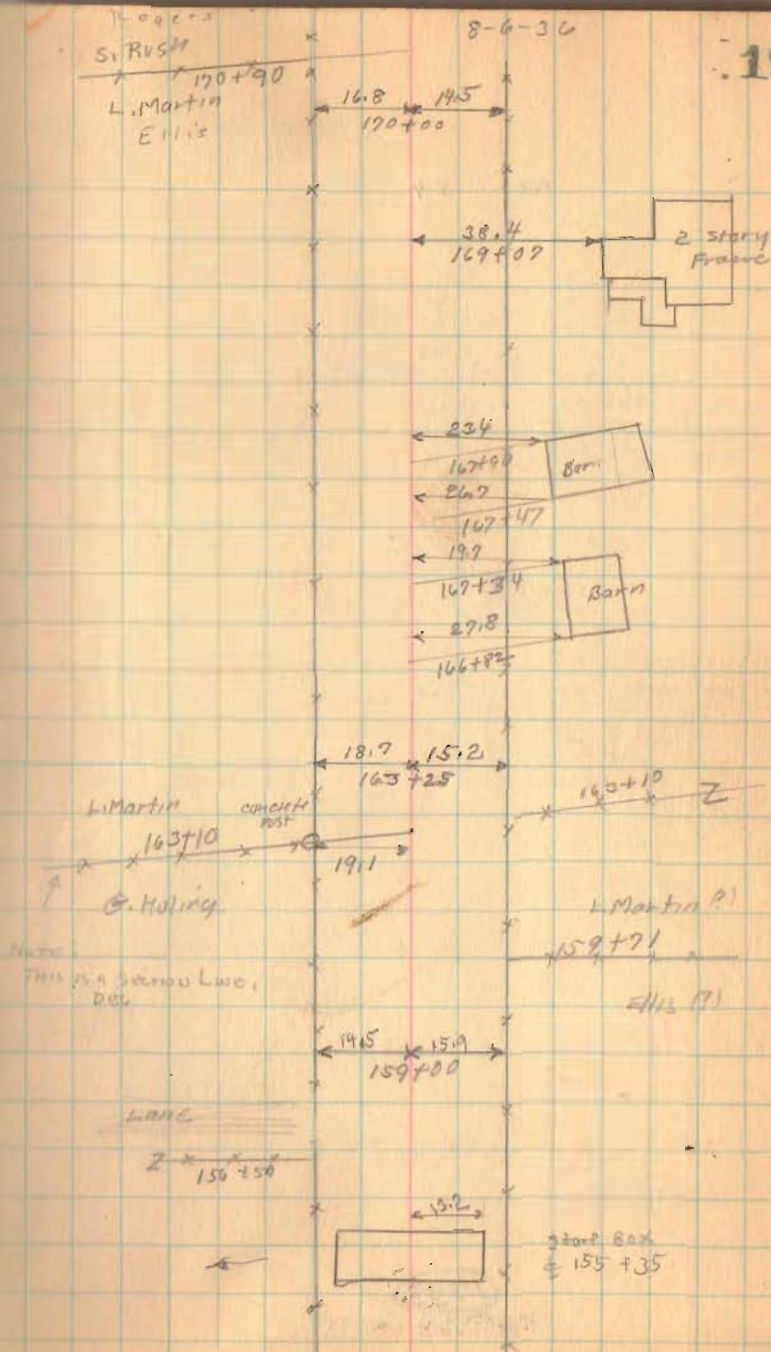
S. Rust

L. Martin

Ellis

8-6-36

19



Road. 24

195+03
181+75
13728

190+90
181+75
9+15

2
13

138 1,100

1330 1,100 0.082
10640
362.0

1330 1,100 0.082
10640

1300
1000
10.000

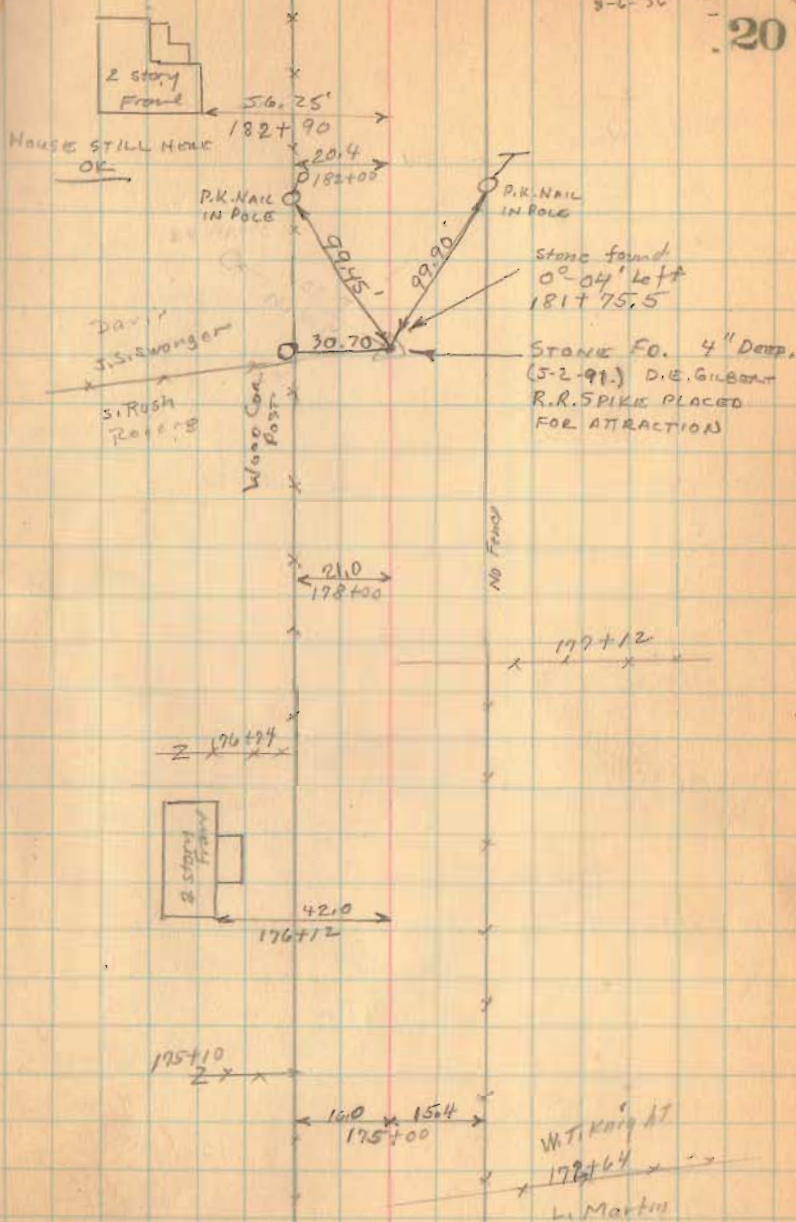
182+00

178+00

175+00

1733

INDEXED ON MAP



Road 24

199+06

196+00

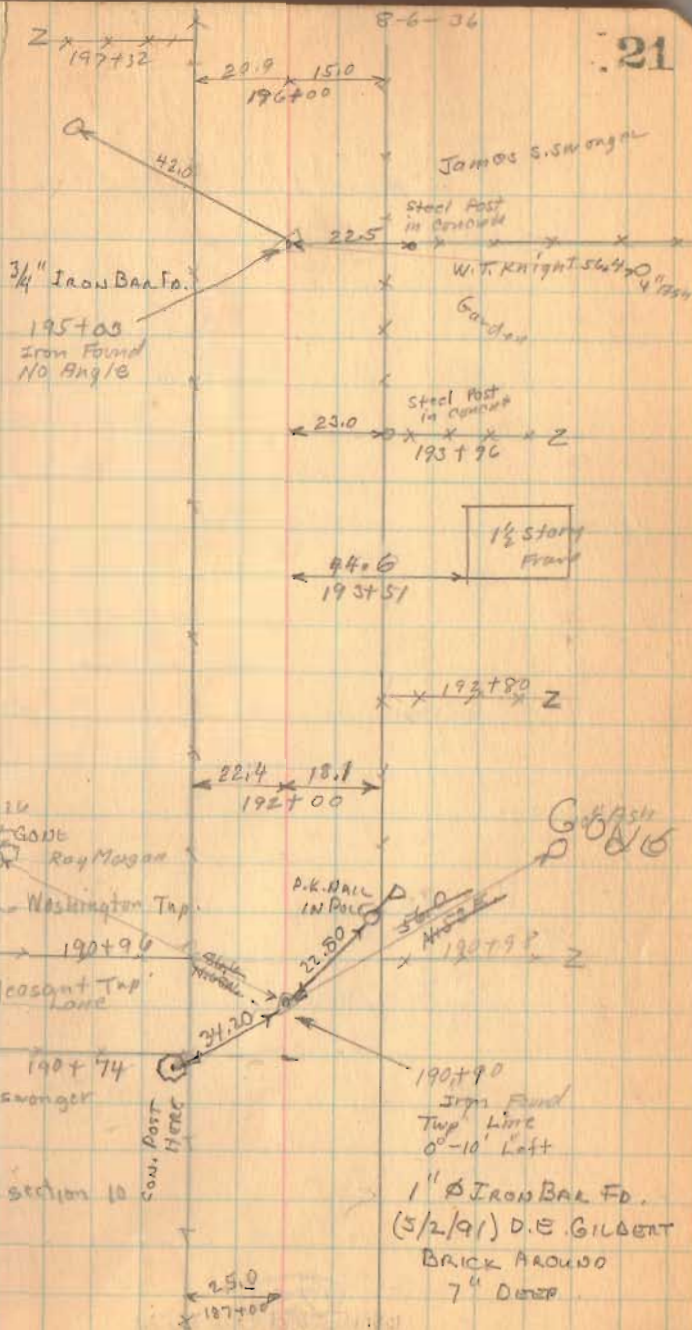
192+00

187+00

1733

INDEXED ON MAP

21



Road 24

211+00

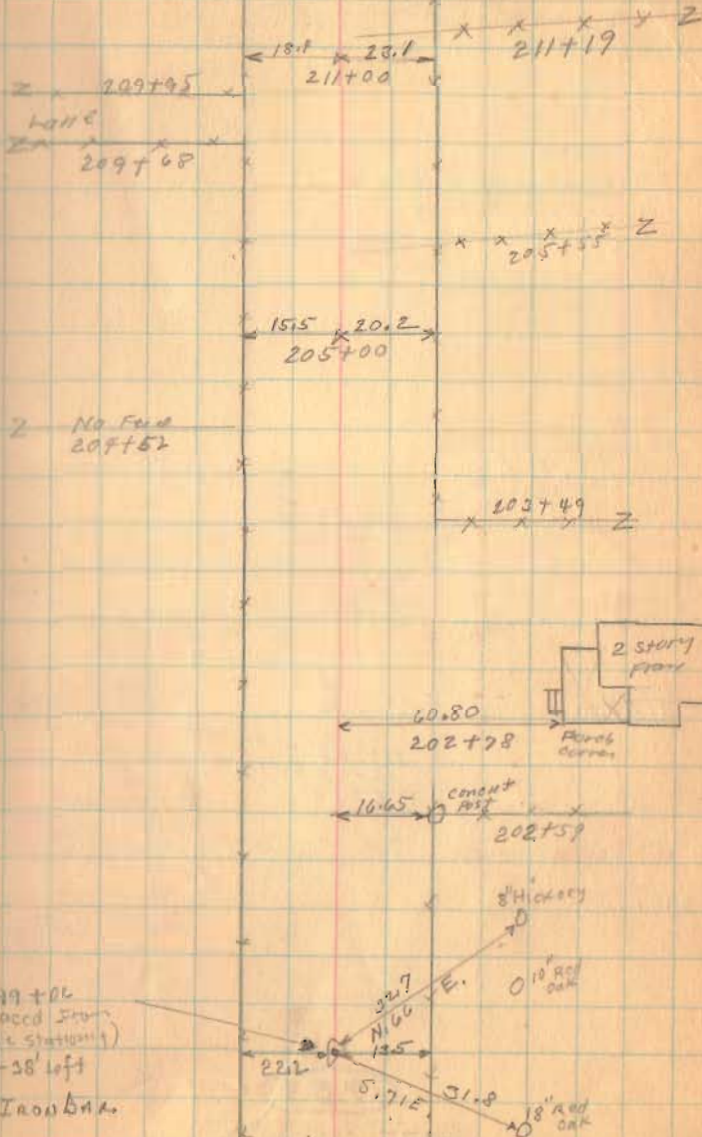
205+00

1733

INDEXED ON MAP

Aug. 7 - 1936
Clear - Windy
F. Wright
G. Wilgus
J. Montgomery
Max James
Joe Roberts

22



Road 24

223+00

218+00

229+39 P.I. Near Creek
12+99 S.W. Corner
216+40

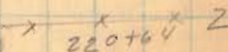
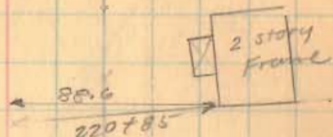
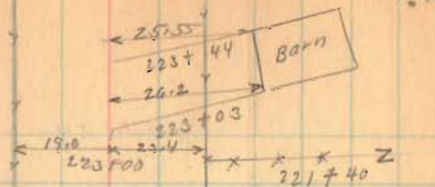
216+40

1733

INDEXED ON MAP

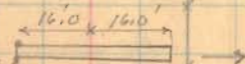
23

8-7-30



216+40
Placed Iron
3'-20' 4ft

Found 5-8-1991 DEG
1" Iron Bar - 3" Deep
Δ = 3'-22' LT.
114100 10"
Oil.



Found 12/2/65 Barn
Replaced w/ 1" # bar
L.H.C.

Road. 24

235+00

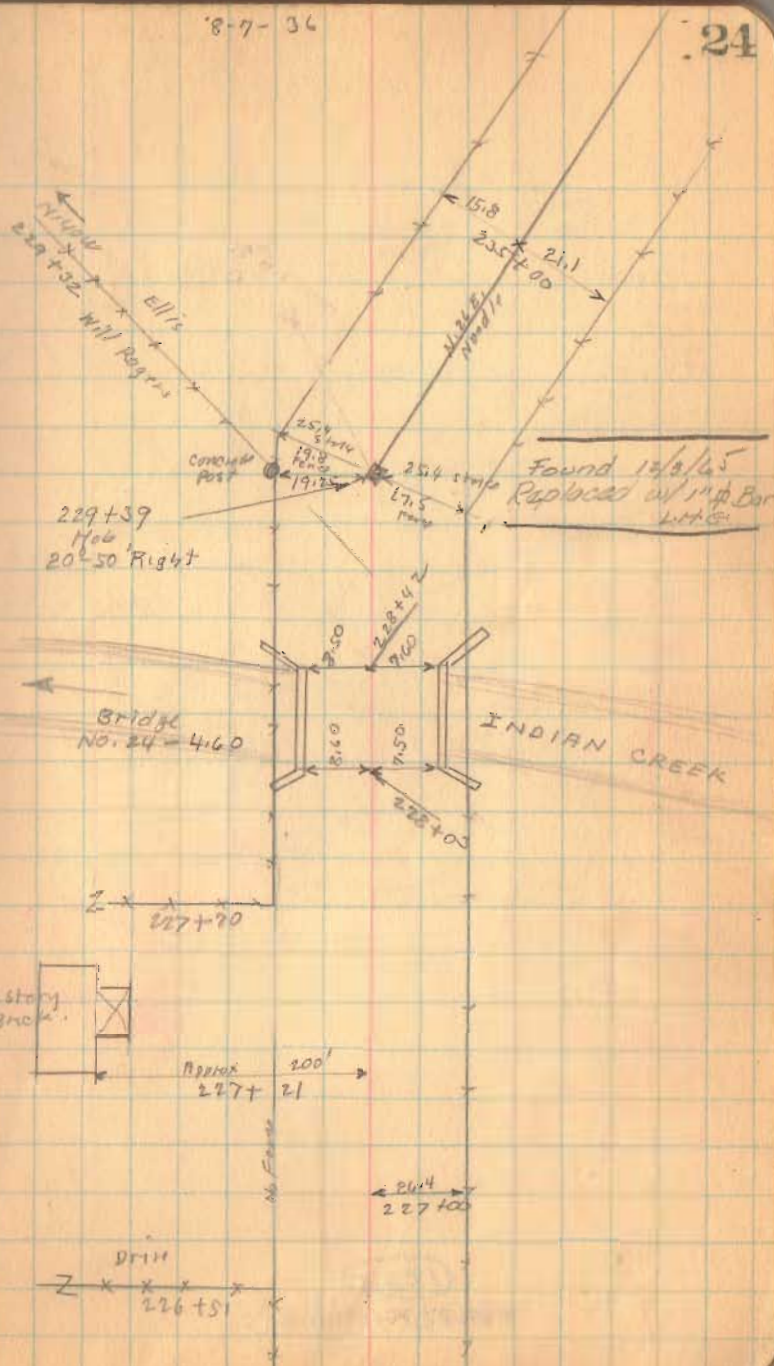
229+39

227+00

1733
INDEXED ON MAP

8-7-36

24



Road 24

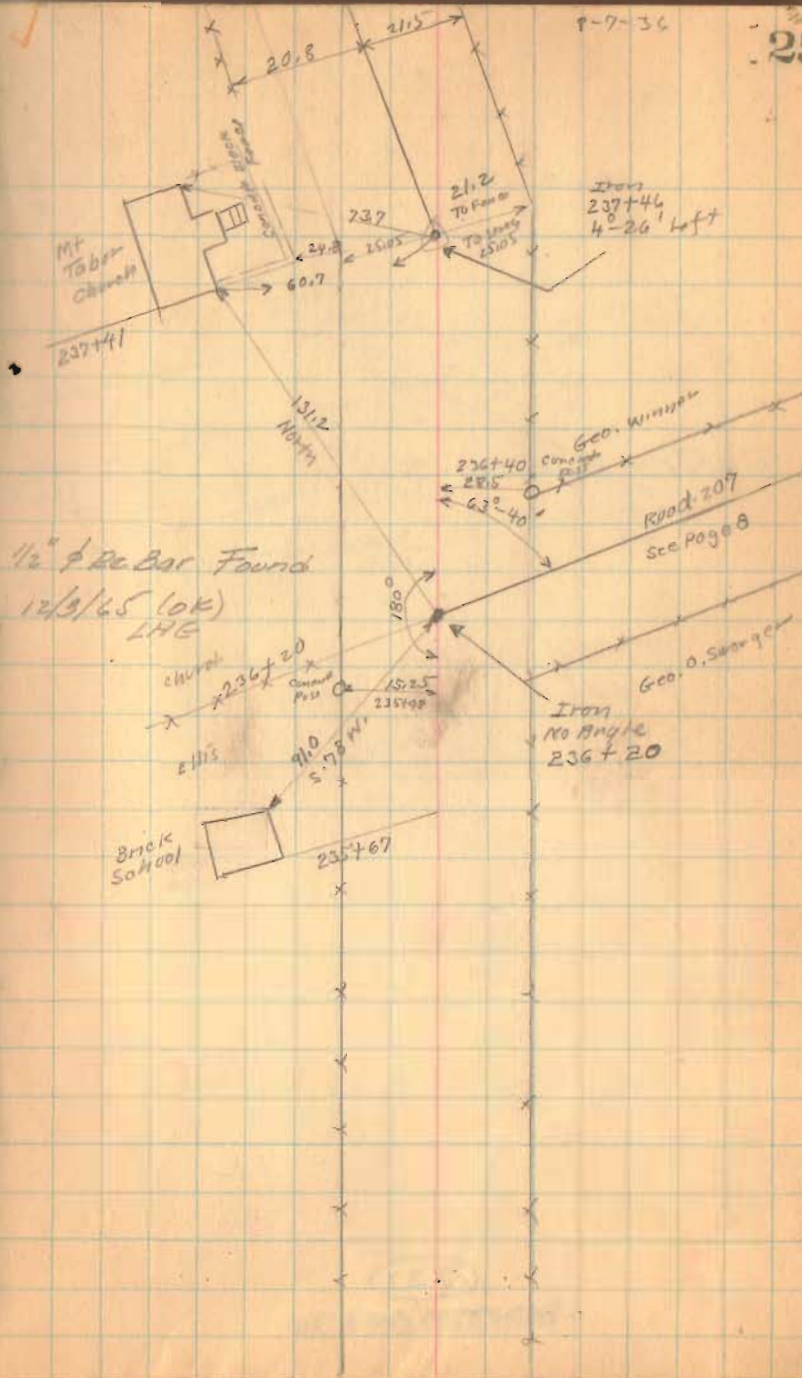
239+00

237+46

Right Only

1733

INDEXED ON MAP



Road 24

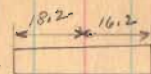
245+62 Right Only

245+00

1733

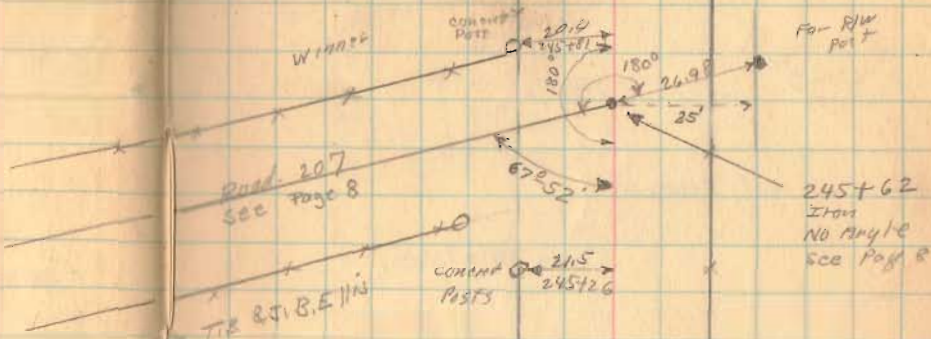
INDEXED ON MAP

West end
moved from
original center



8-7-36
Storn
Rix = 248+25

26



Road 24

260+00

90° Barksite

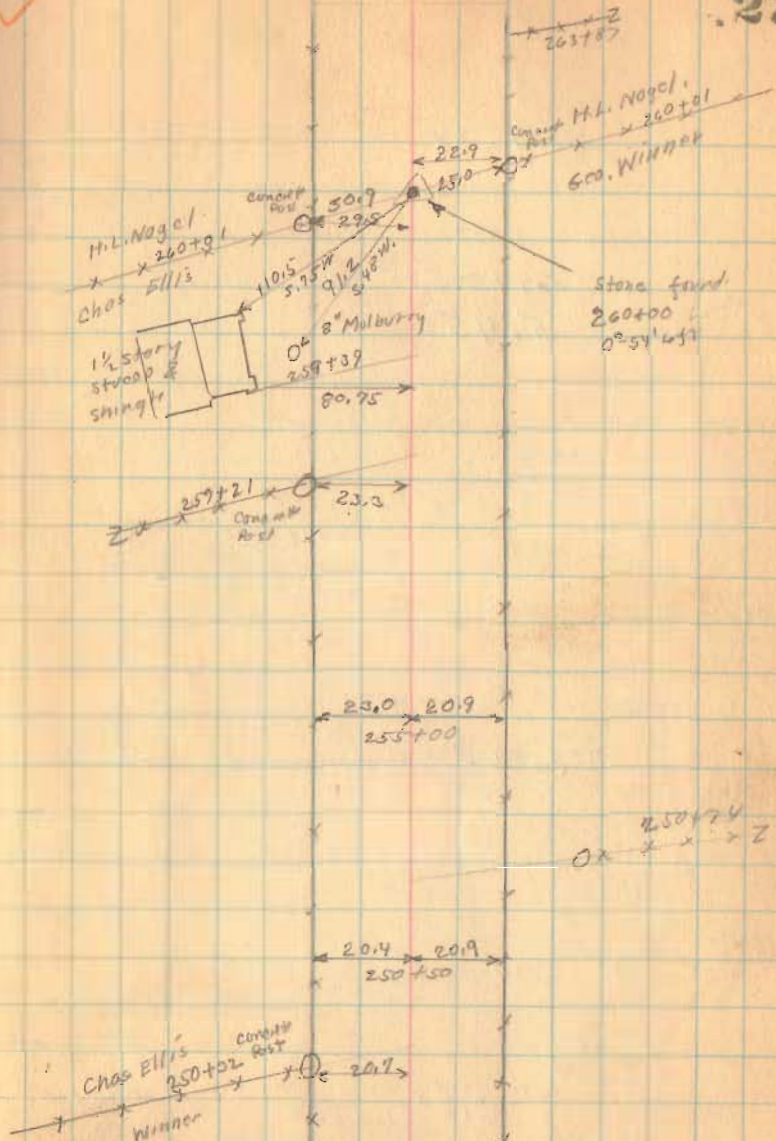
250+50

1733

INDEXED ON MAP

8-7-36

27



Road, 24

Length 28752 Feet

Length 5.44545 Miles

Length 5.45 Miles

287+00 (set 90° with Transit.)

280+00

Hub 1970

276+00

274+00 left only

294+26.5
stone found
62° 52' Right

Sam'l Huber

Census
No. 18.7

Geo. B. Hudson

266+00

272+24

Lane

272+10

Geo. B. Hudson
x 269+94

M.L. Nagel, 269+73.5

22.5 22.8
260+0063.4
264+19.7

L.F. Ames

Geo. B. Hudson

Section 12

Sam'l Huber

N. 82° E
Needle

No Fence

L.F. Ames

Section 11

S.H. 27
Road 69N.W. 1/4
591+00
Plan L-19
Page 4
Section 6

Many rocks

Census
No. 22.6287+52
Placed SpikesS.H. 27
Road 69
587+00
N.W. 1/4
Plan L-19
Page 4
Section 5

1733

INDEXED ON MAP