

Road 207
Washington Tap

40'-0+00 To 16+16 Road Record No. 2
Page 324

40'-16+16 To 149+58

40' Commissioners Journal Vol. 8 Page 326
327

See Book 609 for
X-sections of Levels.

5+00

0+25

for N.W. Posts

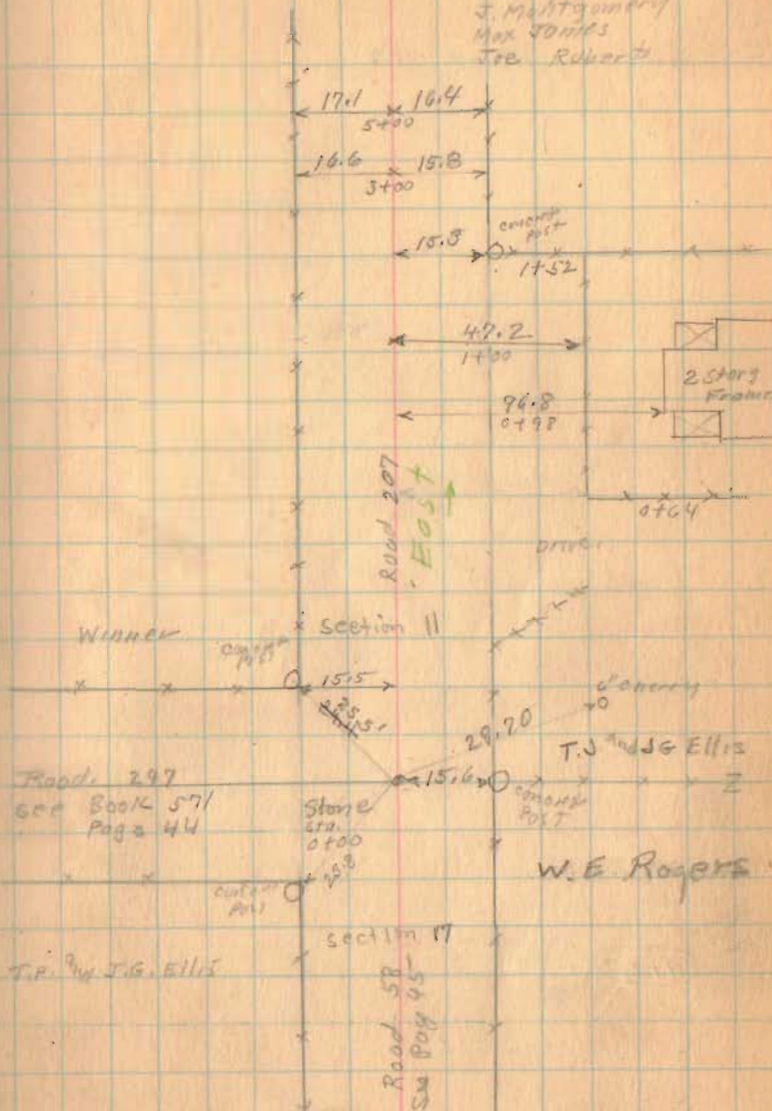
1732

INDEXED ON MAP

Aug. 4, 1936

Woot
F. Wright
G. Wilgus
J. Montgomery
Max Jones
Joe Roberts

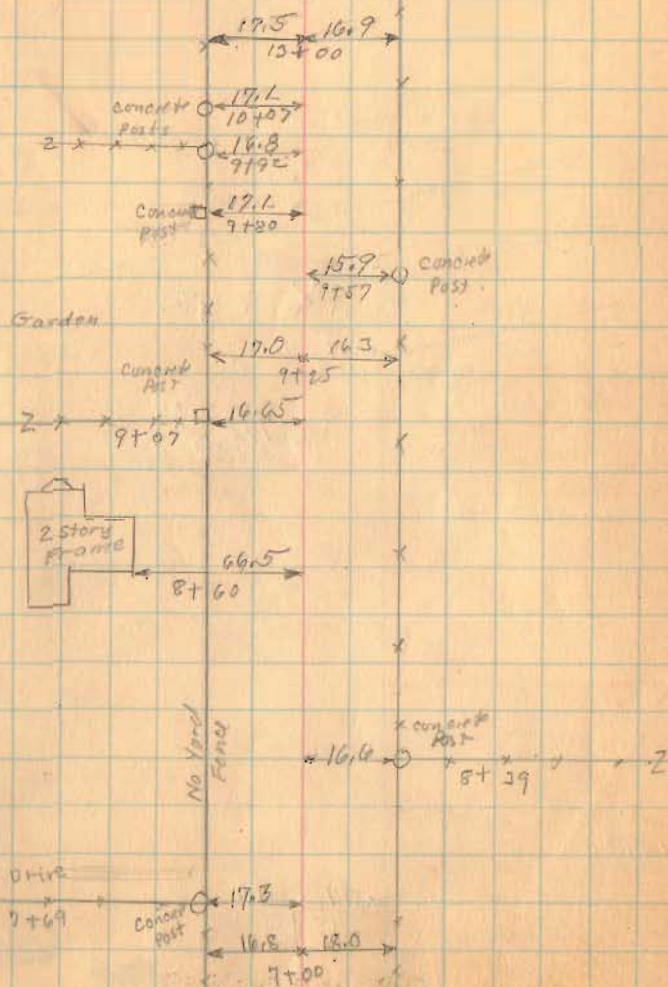
6



Road 207

8-4-36

7



9+25

1732

INDEXED ON MAP

Road 207

L. F. Amos
E. R. Nougel



16+16 Placed Iron

Stake for R/W Post
20+98
25 at 90°

Road 24

180°
112.08'
17.4
15+96
17.0
15+78

Corner Post

Corner Post

(see Page 25)
S 22-08 W

East Needle

19.7
17.0
15+00

15+00

1732

8-4-36

8

13.0 x 15.9
20+00
19+96

Garage

19+49

16.8

19+00

1 story
19+58

62.6

18+58

18+50

20+00

17+00

Stakes for
R/W Posts

Road 207
East
1/4
S. 89-46 E.

Iron

12.0

17.8

19+00

42.26'

126'

S. 26-34 W

52.20'

115-20'

180°

Geo. O. Smorgon

My Taber
church

Placed Iron
16+16

Ed. Iron at 16+16
30 April 1971 C.M.

Road 24

18.5

19+00

old
Brews
School

See District
Map
1987

Road 207

37+00

32+82.5

29+00

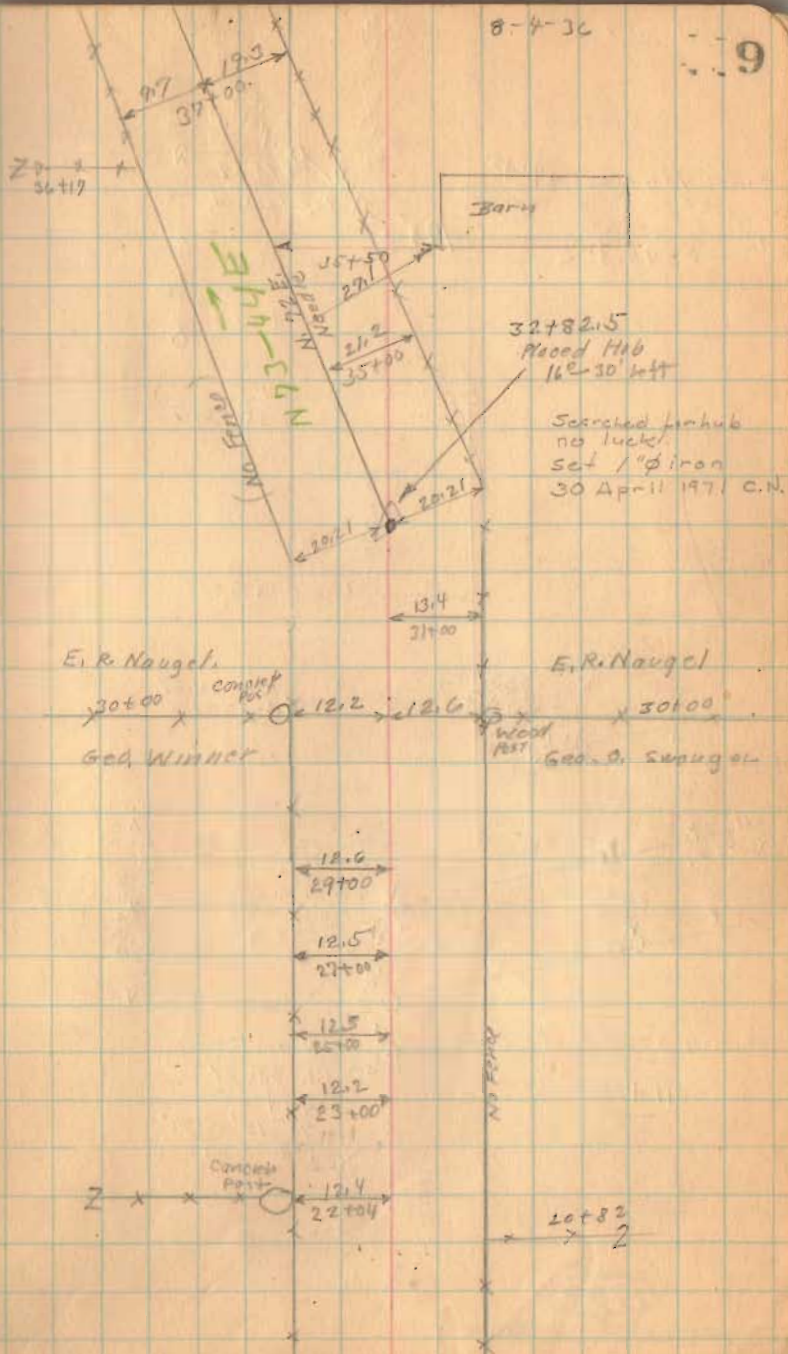
25+00

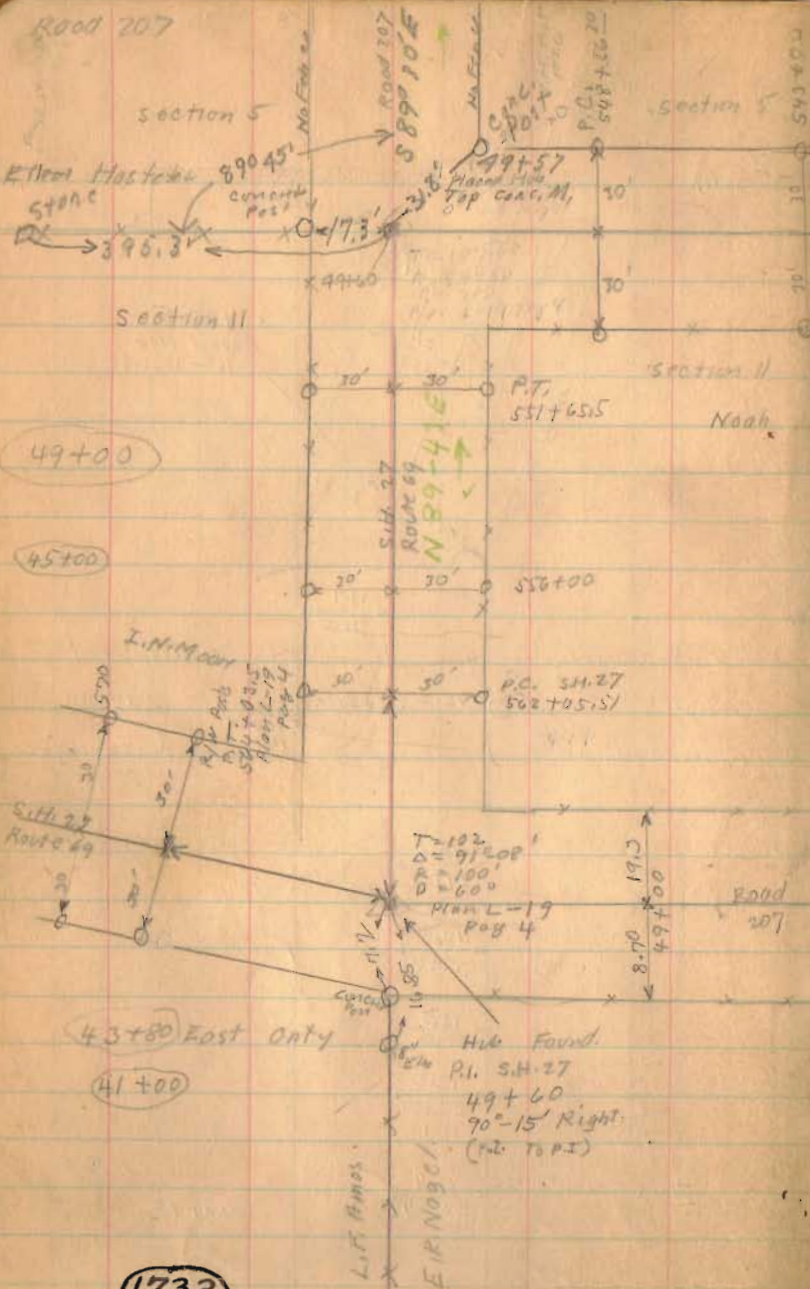
1732

SPRINGS ON ROAD

8-4-36

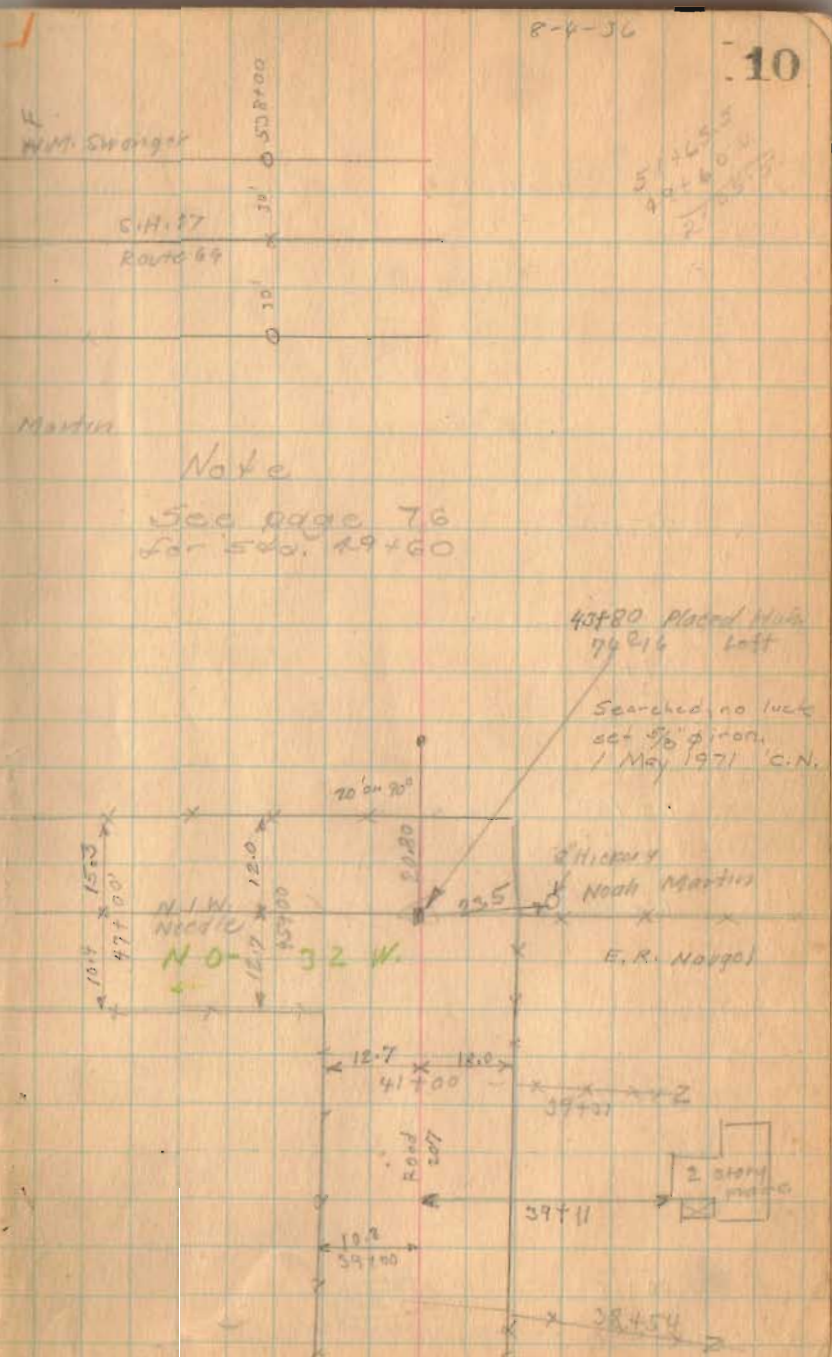
9





1732

INDEXED ON MAP



Note
See page 76
for 540, 49+60

Road. 207

• Note

See page 76

75+00

69+00

63+50

62+00

55+00

50+00

1732

INDEXED ON MAP

11

Found Iron

1/16 150

Dug Large

Hole -

No Luck.

No Angle

4-30

No Fence

Concrete

Post

Sarah L. Wagner

(No Fence)

Road No. 208

Approx. E 74+09

75+96

W. M. Swanger

F

12.9

11.8

11.8

11.8

11.8

11.8

11.8

11.8

11.8

11.8

11.8

11.8

11.8

11.8

11.8

11.8

11.8

11.8

11.8

11.8

11.8

11.8

11.8

11.8

11.8

11.8

11.8

11.8

11.8

11.8

11.8

11.8

11.8

11.8

11.8

11.8

11.8

11.8

11.8

S 89° - 30' E

No Fence

No Fence

68+00

Henry S. Smith

63+80

H. H. Kenrick

Land

62+86

Place the

dist. as shown

62+87

395.3

17.1

John Hostetter

61+15

Concrete

Post

16.0

61+00

60+78

S. 88° E.
Needle

No Fence

No Fence

Book page 69

Stone Field

Road 287

Note

See page 76

91+00

85+00

81+00

1732

INDEXED ON MAP

Aug 5-1936 12

Cloudy

F. Wright

G. Wilgus

J. Montgomery

Max Roberts

Jac. Roberts

John I

Joseph Kaylor

89+20

Sarah L. Wagner

Z 86+40

Z

2 story
Frame

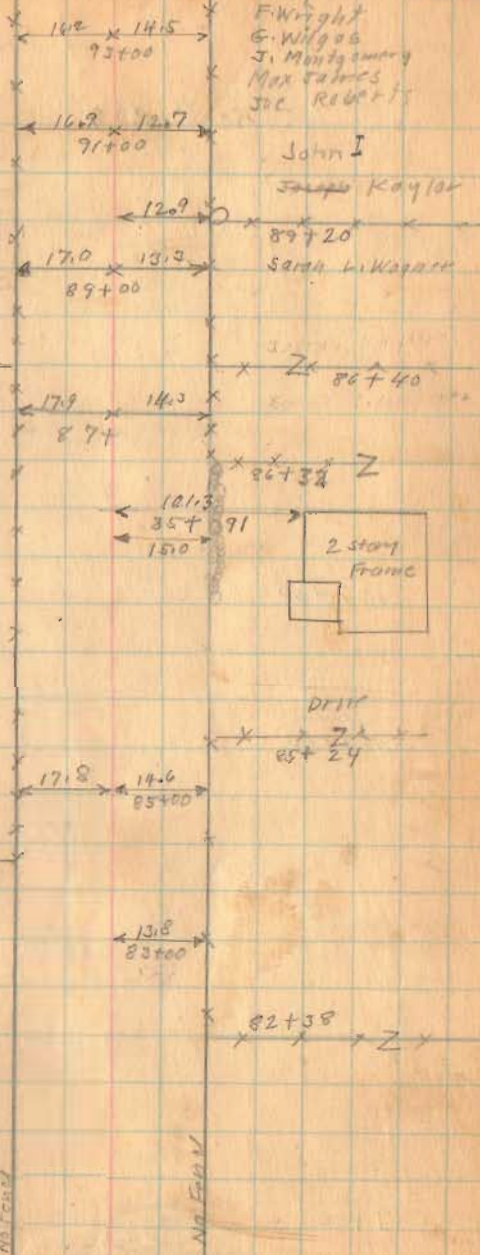
DRIVE

Z 85+24

Z 82+38

No Fence

No Fence



Roads 207

Note

See page 76

109+50

108+50

97+00

1732

INDEXED ON MAP

Section 35

L. L. Krawitz

Henry S. Smith

Section 5

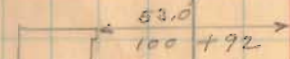
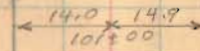
R. 14 Joseph Kayler

15th sugar

Road No. 211 see Book 588 Page 69

Joseph Kayler

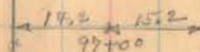
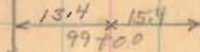
R. 14



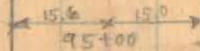
Dist. Nail Nash. Trp. 1900

Iron Placed 99+71

589+50 E



2 x 95+40 Land



Road 207

Note
See page 76

8-5-36

14

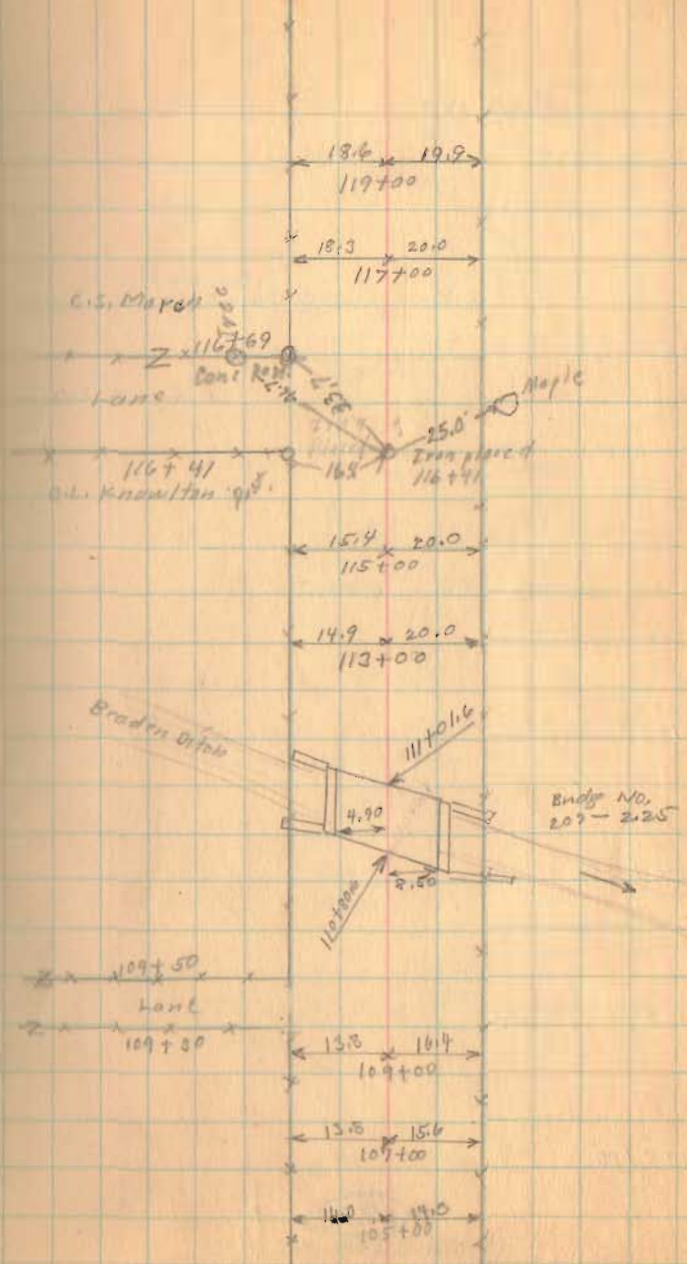
119+00

112+00

109+00

1732

INDEXED ON MAP



Road. 207

Note

See page 76

131+00

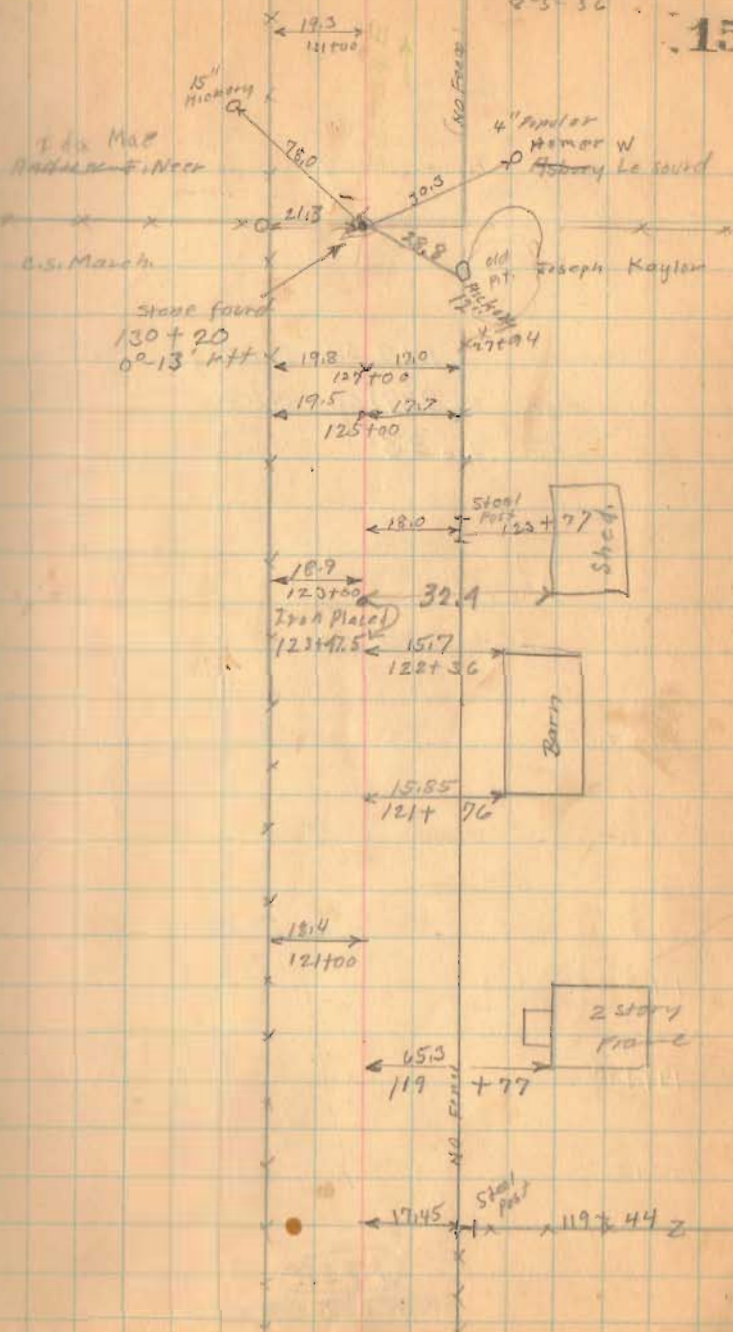
129+00

125+00

1732

LIBRARY OF THE

15



Road 207

Length 14938 Feet

Length 2.829166 Miles

Length 2.83 Miles

Note

See page 76

148+50

145+00

141+00

135+00

1732

INDEXED ON MAP

8-5-36

16

