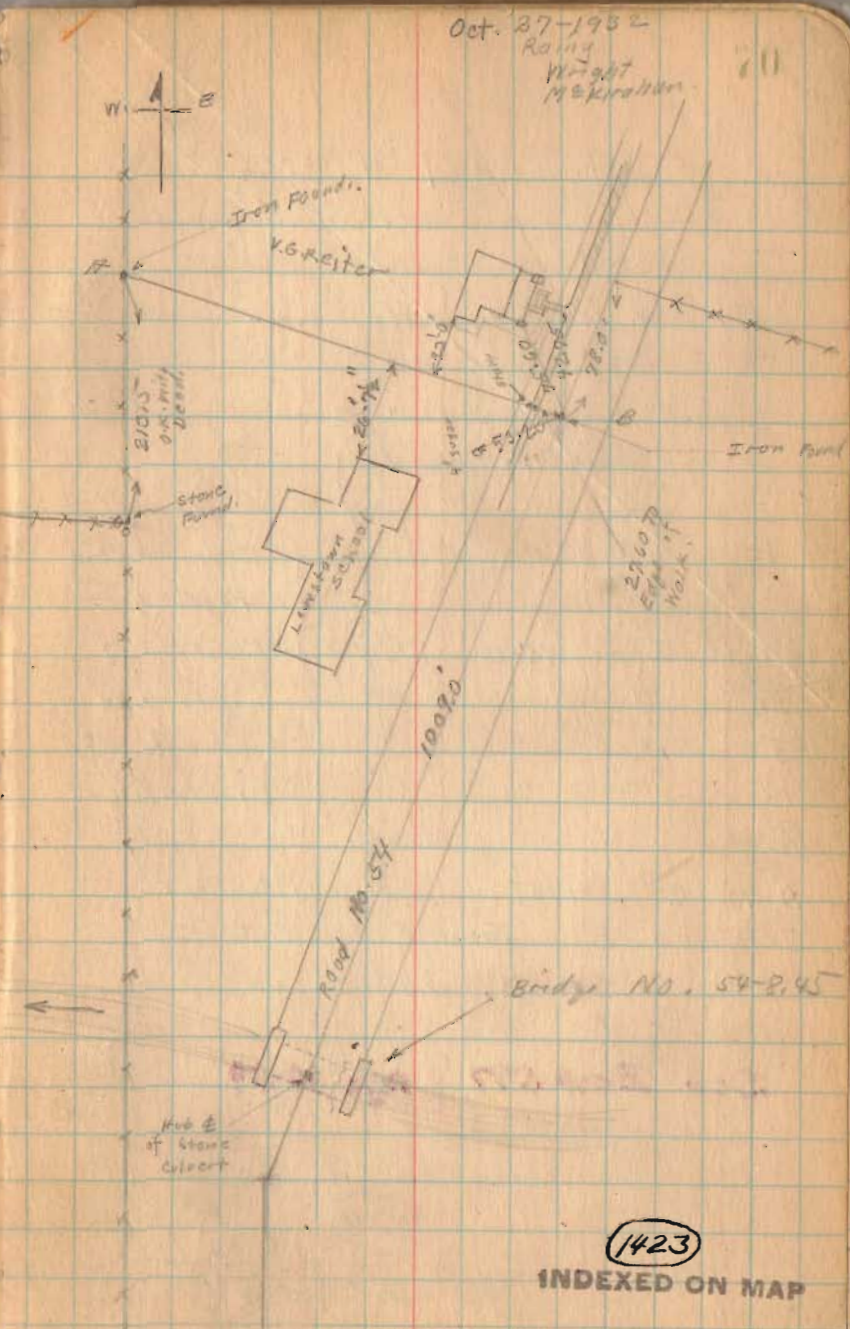


Lewistown School Survey
 Washington Twp.
 Sec. 24 T. 7 R. 8

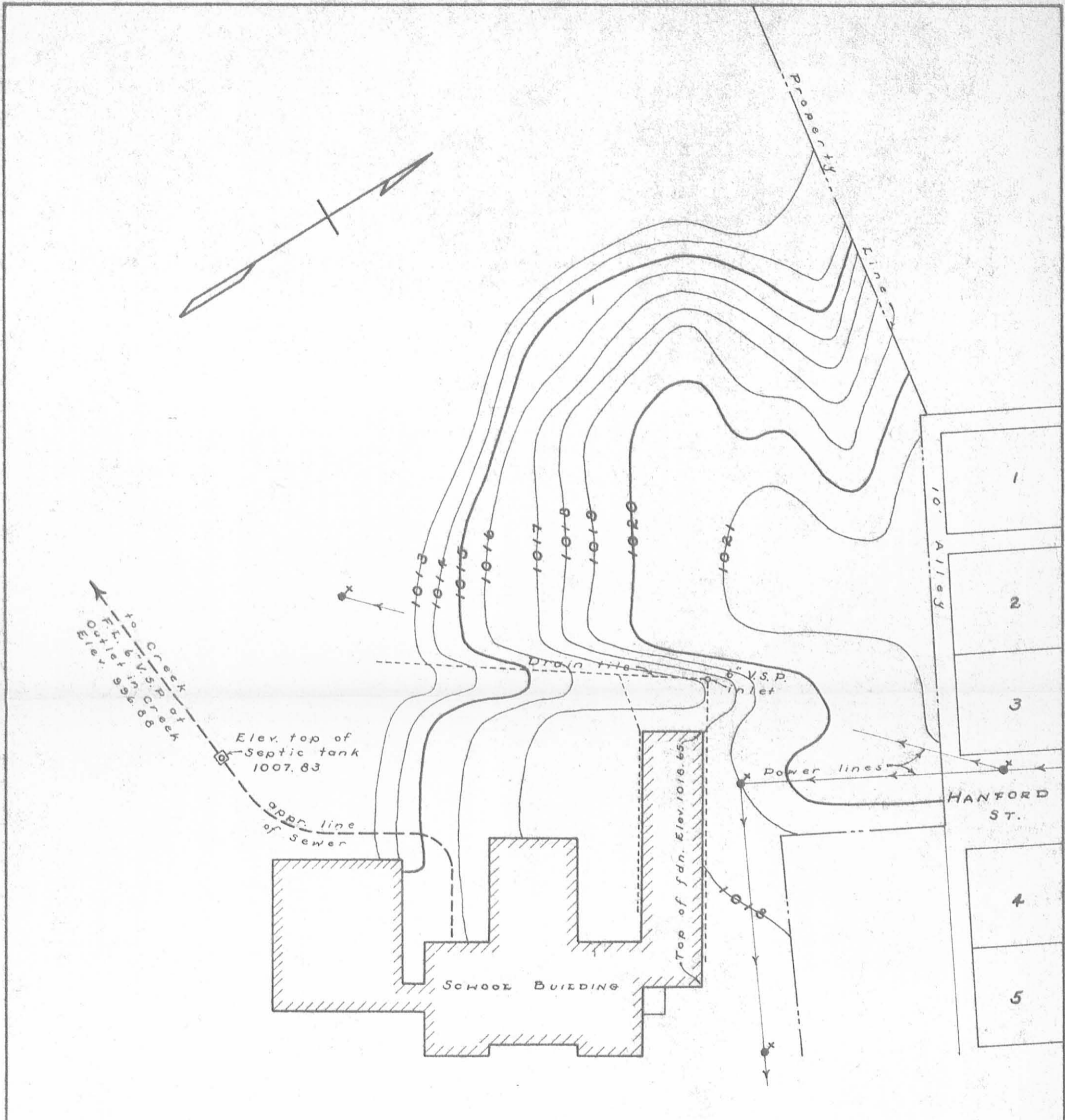
Survey to Establish North
 line for a fence.

Placed several stakes on
 line AB.



1423

INDEXED ON MAP



TOPOGRAPHICAL MAP
 OF
 WASHINGTON TOWNSHIP SCHOOL GROUND
 LEWISTOWN OHIO
 1953

INDEXED ON MAP
1423 1B

SCALE - 1" = 50'

DATUM - MEAN SEA LEVEL
 BENCH MARK -
 TOP OF RIGHT-OF-WAY MONUMENT
 IN SCHOOL YARD - STA. 20+00 OF
 C.H. #54 - ELEV. 1013.18

⊗ = Power Poles

SURVEYED & DRAWN BY
 DAN L. DODSON MAR. 7, 53
 SURVEYOR-IN-TRAINING



REC'D 9-16-97 SWY OK ✓



Lee Surveying and Mapping Co., Inc.



Farm Surveys • Lot Surveys • Topography • Subdivisions • Construction Layout

117 NORTH MADRIVER STREET
BELLEFONTAINE, OHIO 43311

(937) 593-7335
FAX (937) 593-7444

WASHINGTON LOCAL SCHOOL DISTRICT 6.455 ACRES

Lying in Section 24, Town 7, Range 8, Washington Township, Logan County, Ohio.

Being part of the P.R. Seely, President of the Washington Local School District, 0.77 acre tract, (Volume 197, Page 19), all of the Board of Education of the Washington Local School District 0.98 acre tract (Volume 195, Page 316), all of 1.33 acre tract (Volume 195, Page 317), and part of the original 9.33 acre tract (Volume 118, Page 308), and being more particularly described as follows:

Beginning at a railroad spike found at the intersection of the center-lines of Main Street and Center Street in the platted Lots of Lewistown as described in Deed Volume E, Page 164.

THENCE, with the center-line of Center Street, S 32°-50'-10" W, a distance of 531.66 feet to a 1/2 inch iron rod found at an angle in the street.

THENCE, continuing with the center-line of Center Street and the center-line of County Highway 54, S 36°-35'-10" W, a distance of 396.13 feet to a railroad spike set at the TRUE POINT OF BEGINNING, passing a railroad spike found on the southwesterly line of the platted Lots of Lewistown at 10.00 feet, and also passing a 1-1/2 inch iron rod found at 78.23 feet.

THENCE, continuing with the center-line of County Highway 54 (60 feet wide), S 36°-35'-10" W, a distance of 230.78 feet to a railroad spike found.

THENCE, with the northeasterly line of the Kenneth May 2.41 acre tract (O.R. 47, Pg. 305) and the Jay A. Bowles 9.65 acre tract (O.R. 267, Pg. 22), N 52°-39'-41" W, a distance of 661.64 feet to a 1 inch iron rod found, passing a 5/8 inch iron rod set at 30.00 feet.

THENCE, with an east line of the said 9.65 acre tract, N 0°-09'-03" W, a distance of 211.98 feet to a 1 inch iron rod found.

THENCE, with the lines of the Laura May Crockett 22.26 acre tract (Vol. 339, Pg. 838), the following two (2) courses:

N 0°-03'-55" E, a distance of 213.35 feet to a 1-1/4 inch iron rod found.

S 89°-18'-45" E, a distance of 199.47 feet to a 1-1/2 inch square iron bar found on the north-south quarter section line of Section 24.

THENCE, with the southwesterly line of the Gail Edward Stevens 5.563 acre tract, (O.R. 196, Pg. 185), and the Lowell Predmore 0.50 acre tract (Vol. 389, Pg. 205), S 77°-56'-56" E, a distance of 268.60 feet to a 5/8 inch iron rod set.

THENCE, S 38°-25'-28" W, a distance of 157.38 feet to a 5/8 inch iron rod set.

THENCE, S 25°-18'-35" E, a distance of 167.13 feet to a 5/8 inch iron rod set.

THENCE, S 31°-21'-56" W, a distance of 130.79 feet to a 5/8 inch iron rod set.

THENCE, S 56°-24'-12" E, a distance of 355.63 feet to the point of beginning, passing a 5/8 inch iron rod set at 325.59 feet.

Containing 6.455 acres, of which 0.158 acre is within the right-of-way of County Highway 54.

The basis for bearings is the center-line of Center Street, being S 32°-50'-10" W, and all other bearings are from angles and distances measured in a field survey by Lee Surveying and Mapping Co., Inc. on August 26, 1997.



ORIGINAL STAMP IN GREEN

Description prepared by:

Jeffrey I. Lee
Professional Surveyor 6359
September 5, 1997
Revised September 16, 1997

L-2568

INDEXED ON MAP
1423 2D-1

REC'D 9-16-97 SWJ OK



Lee Surveying and Mapping Co., Inc.



Farm Surveys • Lot Surveys • Topography • Subdivisions • Construction Layout

117 NORTH MADRIVER STREET
BELLEFONTAINE, OHIO 43311

(937) 593-7335
FAX (937) 593-7444

WASHINGTON LOCAL SCHOOL DISTRICT 3.512 ACRES

Lying in Section 24, Town 7, Range 8, Washington Township, Logan County, Ohio.

Being part of the P.R. Seely, President of the Washington Local School District, 0.77 acre tract, (Volume 197, Page 19), and part of the Board of Education of the Washington Local School District original 9.33 acre tract as deeded and described in Volume 118, Page 308, of the Logan County Records of deeds and being more particularly described as follows:

Beginning at a railroad spike found at the intersection of the center-line of Main Street and Center Street in the platted Lots of Lewistown as described in Deed Volume E, Page 164.

THENCE, with the center-line of Center Street, S 32°-50'-10" W, a distance of 531.66 feet to a 1/2 inch iron rod found at an angle in the street.

THENCE, continuing with the center-line of Center Street and the center-line of County Highway 54, S 36°-35'-10" W, a distance of 78.23 feet to a 1-1/2 inch iron rod found at the TRUE POINT OF BEGINNING, passing a railroad spike found on the southwesterly line of the platted Lots of Lewistown at 10.00 feet.

THENCE, continuing with the center-line of County Highway 54 (60 feet wide), S 36°-35'-10" W, a distance of 317.90 feet to a railroad spike set.

THENCE, N 56°-24'-12" W, a distance of 355.63 feet to a 5/8 inch iron rod set, passing a 5/8 inch iron rod set at 30.04 feet.

THENCE, N 31°-21'-56" E, a distance of 130.79 feet to a 5/8 inch iron rod set.

THENCE, N 25°-18'-35" W, a distance of 167.13 feet to a 5/8 inch iron rod set.

THENCE, N 38°-25'-28" E, a distance of 157.38 feet to a 5/8 inch iron rod set on the southerly line of the Lowell Predmore 0.50 acre tract (Vol. 389, Pg. 205).

THENCE, with the southerly line of the said 0.50 acre tract, S 77°-56'-56" E, a distance of 49.53 feet to a 5/8 inch iron rod set on a line of the Plat of Lewistown on the westerly line of a 10 feet wide alley.

THENCE, with the lines of the Plat of Lewistown and the lines of the 10 feet wide alley, the following two (2) courses:

S 33°-08'-38" W, a distance of 3.00 feet to a 1 inch iron rod found.

S 55°-58'-56" E, a distance of 207.04 feet to a 5/8 inch iron rod set.

THENCE, with the westerly line of the Charlotte Coder 0.45 acre tract (Vol. 384, Pg. 496), S 33°-10'-42" W, a distance of 84.04 feet to a 1 inch iron rod found.

THENCE, with the southerly line of the said 0.45 acre tract, S 59°-34'-01" E, a distance of 253.82 feet to the point of beginning, passing a 5/8 inch iron rod set at 223.65 feet.

Containing 3.512 acres, of which 0.218 acre is within the right-of-way of County Highway 54.

The basis for bearings is the center-line of Center Street, being S 32°-50'-10" W, and all other bearings are from angles and distances measured in a field survey by Lee Surveying and Mapping Co., Inc. on August 26, 1997.

Description prepared by:

Jeffrey I. Lee
Professional Surveyor 6359
September 5, 1997
Revised September 15, 1997



ORIGINAL STAMP IN GREEN

L-2568

INDEXED ON MAP
1423 2D-2

LAURA MAY CROCKETT
AKA LORA MAY CROCKETT
22.26 AC.
VOL. 339, PG. 838

GAIL EDWARD STEVENS &
SHELLY ANN STEVENS
5.563 AC.
O. R. 196, PG. 185

LOWELL PREDMORE &
MARTHA PREDMORE
0.50 AC.
VOL. 389, PG. 205

S 89° 18' 45" E
199.47'
N 00° 03' 55" E
213.35'
THE BOARD OF EDUCATION
OF THE WASHINGTON LOCAL
SCHOOL DISTRICT, LOGAN
COUNTY, OHIO
0.98 AC.
VOL. 195, PG. 316

N 00° 09' 03" W
211.98'
THE BOARD OF EDUCATION
OF THE WASHINGTON LOCAL
SCHOOL DISTRICT, LOGAN
COUNTY, OHIO
1.33 AC.
VOL. 195, PG. 317

THE BOARD OF EDUCATION
OF THE WASHINGTON LOCAL
SCHOOL DISTRICT, LOGAN
COUNTY, OHIO
ORIG. 9.33 AC.
VOL. 118, PG. 308

JAY A. BOWLES &
SANDRA L. BOWLES
9.65 AC.
O. R. 267, PG. 22

KENNETH MAY
2.41 AC.
O. R. 47, PG. 305

LEWISTOWN
VOL. E, PG. 164

3.512 ACRES
OF WHICH 0.218 ACRE IS
WITHIN THE HIGHWAY
RIGHT-OF-WAY

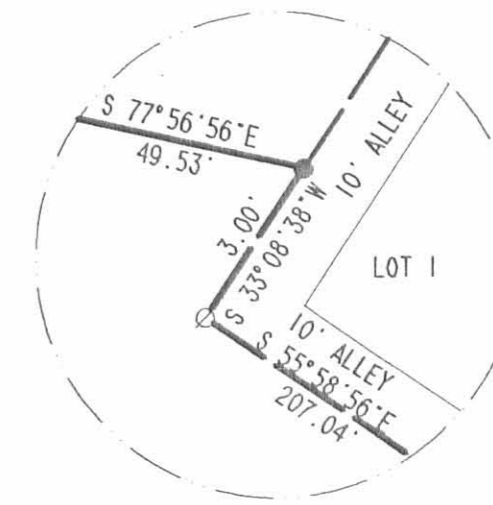
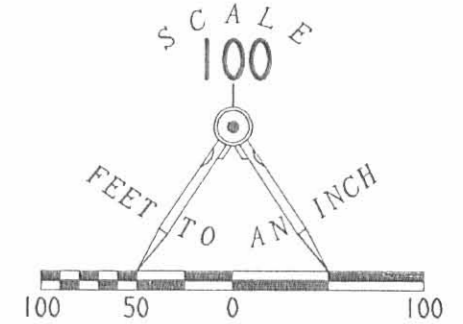
6.455 ACRES
OF WHICH 0.158 ACRE IS
WITHIN THE HIGHWAY
RIGHT-OF-WAY

REFERENCES:

LOGAN COUNTY ENGINEER'S FILES:
FIELD BOOK 692, PAGES 11-13
FIELD BOOK 657, PAGES 37 & 57
FIELD BOOK 512, PAGE 70
R-1423, R-1997, R-5695 AND R-8786
S-117 AND S-118

LOGAN COUNTY RECORDER'S FILES:
PLAT OF LEWISTOWN, DEED VOL. E, PG. 164
OTHER DEEDS AS CITED

BELLEFONTAINE CITY ENGINEER'S FILES:
FIELD BOOK 184, PAGE 19



DETAIL A
NO SCALE

LEGEND

- 5/8" IRON ROD SET
- ⊗ RAILROAD SPIKE SET
- ⊗ RAILROAD SPIKE FOUND
- 1/2" IRON ROD FOUND
- 5/8" IRON ROD FOUND
- ⊗ 1" IRON ROD FOUND
- ⊗ 1-1/4" IRON ROD FOUND
- ⊗ 1-1/2" SQ. IRON BAR FOUND
- 1-1/2" IRON ROD FOUND

SURVEY OF TWO TRACTS OUT OF THE P. R. SEELY, PRESIDENT OF
THE WASHINGTON LOCAL SCHOOL DISTRICT, LEWISTOWN, OHIO
0.77 ACRE TRACT
VOLUME 197, PAGE 19
AND THE BOARD OF EDUCATION OF THE WASHINGTON
LOCAL SCHOOL DISTRICT, LOGAN COUNTY, OHIO
0.98 ACRE TRACT
VOLUME 195, PAGE 316
AND THE BOARD OF EDUCATION OF WASHINGTON
TOWNSHIP, LOGAN COUNTY, OHIO
1.33 ACRE TRACT
VOLUME 195, PAGE 317
AND THE BOARD OF EDUCATION OF WASHINGTON
TOWNSHIP, LOGAN COUNTY, OHIO
ORIGINAL 9.33 ACRE TRACT
VOLUME 118, PAGE 308
SECTION 24, TOWN 7, RANGE 8
WASHINGTON TOWNSHIP
LOGAN COUNTY, OHIO

SURVEYED BY:

JEFFREY J. LEE
PROFESSIONAL SURVEYOR 6359
AUGUST 26, 1997



ORIGINAL STAMP IN GREEN

COPYRIGHT 1997 BY:
LEE SURVEYING & MAPPING CO., INC.
117 North Madriver Street
BELLEFONTAINE, OHIO 43311
(937) 593-7335

INDEXED ON MAP
1423 2P

D315 LEW2TRAC L-2568

2 WORKING DAYS
BEFORE YOU DIG
CALL TOLL FREE 800-362-2764
OHIO UTILITIES PROTECTION SERVICE.

Received 5-5-98 OK gca



Lee Surveying and Mapping Co., Inc.



Farm Surveys • Lot Surveys • Topography • Subdivisions • Construction Layout

117 NORTH MADRIVER STREET
BELLEFONTAINE, OHIO 43311

(937) 593-7335
FAX (937) 593-7444

THE BOARD OF EDUCATION OF THE WASHINGTON LOCAL SCHOOL DISTRICT 0.158 ACRE SANITARY SEWER EASEMENT

Lying in Section 24, Town 7, Range 8, unincorporated village of Lewistown, Washington Township, Logan County, Ohio.

Being a sanitary sewer easement on the Board of Education of Washington Local School District 9.33 acre tract in Volume 118, Page 308, and 1.33 acre tract as deeded and described in Volume 195, Page 317 of the Logan County Records of Deeds and being more particularly described as follows:

Beginning at a point on a northeast corner of the Jay A. Bowles and Sandra L. Bowles 9.65 acre tract, (O.R. 267, Pg. 22), on the north-south quarter section line of Section 24.

THENCE, with a northerly line of the said 9.65 acre tract, N 52°-39'-41" W, a distance of 32.10 feet to a point.

THENCE, N 33°-58'-10" E, a distance of 63.66 feet to a point.

THENCE, S 57°-10'-55" E, a distance of 126.33 feet to a point.

THENCE, S 32°-16'-47" W, a distance of 50.47 feet to a point.

THENCE, N 57°-13'-20" W, a distance of 96.09 feet to a point.

THENCE, S 32°-46'-40" W, a distance of 15.65 feet to the point of beginning.

Containing 0.158 acre.

The basis for bearings is the center-line of Center Street and County Highway 54, (66 feet wide), north of Station 17+14.3 as described in the Logan County Engineers Field Book 692, Page 11, being S 32°-50'-10" W, and all other bearings are from angles and distances measured in a field survey by Lee Surveying and Mapping Co., Inc. on April 30, 1998.

Description prepared by:



Jeffrey I. Lee
Jeffrey I. Lee
Professional Surveyor 6359
May 1, 1998

L-2568

ORIGINAL STAMP IN GREEN

INDEXED ON MAP
1423 3D-1



Lee Surveying and Mapping Co., Inc.



Farm Surveys • Lot Surveys • Topography • Subdivisions • Construction Layout

117 NORTH MADRIVER STREET
BELLEFONTAINE, OHIO 43311

(937) 593-7335
FAX (937) 593-7444

THE BOARD OF EDUCATION OF THE WASHINGTON LOCAL SCHOOL DISTRICT 20 FEET WIDE SANITARY EASEMENT

Lying in Section 24, Town 7, Range 8, unincorporated village of Lewistown, Washington Township, Logan County, Ohio.

Being a twenty feet wide sanitary sewer easement across the Board of Education of Washington Local School District 9.33 acre tract as deeded and described in Volume 118, Page 308 of the Logan County Records of Deeds and being more particularly described as follows:

Beginning at a point on a northeast corner of the Jay A. Bowles and Sandra L. Bowles 9.65 acre tract, (O.R. 267, Pg. 22), on the north-south quarter section line of Section 24.

THENCE, with a northerly line of the said 9.65 acre tract, N 52°-39'-41" W, a distance of 32.10 feet to a point.

THENCE, N 33°-58'-10" E, a distance of 63.66 feet to a point.

THENCE, S 57°-10'-55" E, a distance of 68.64 feet to a point on the center-line of the 20 feet wide sanitary easement at the TRUE POINT OF BEGINNING.

THENCE, with the center-line of said easement, the following three (3) courses:

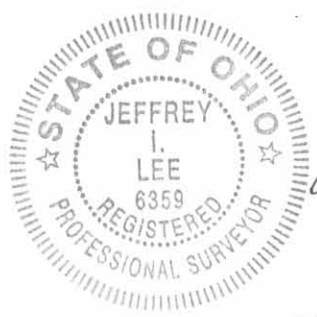
N 40°-29'-57" E, a distance of 24.04 feet to a point.

N 36°-27'-05" E, a distance of 190.93 feet to a point.

N 32°-11'-53" E, a distance of 59.42 feet to a point at the terminus of this easement on an easterly line of the 3.512 acres surveyed out of the aforementioned 9.33 acre tract.

The basis for bearings is the center-line of Center Street and County Highway 54, (66 feet wide), north of Station 17+14.3 as described in the Logan County Engineers Field Book 692, Page 11, being S 32°-50'-10" W, and all other bearings are from angles and distances measured in a field survey by Lee Surveying and Mapping Co., Inc. on April 30, 1998.

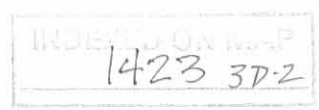
Description prepared by:



Jeffrey I. Lee
Jeffrey I. Lee
Professional Surveyor 6359
May 1, 1998

L-2568

ORIGINAL STAMP IN GREEN



Received 5-1-98



Lee Surveying and Mapping Co., Inc.



Farm Surveys • Lot Surveys • Topography • Subdivisions • Construction Layout

117 NORTH MADRIVER STREET
BELLEFONTAINE, OHIO 43311

(937) 593-7335
FAX (937) 593-7444

THE BOARD OF EDUCATION OF THE WASHINGTON LOCAL SCHOOL DISTRICT 20 FEET WIDE STORM EASEMENT

Lying in Section 24, Town 7, Range 8, unincorporated village of Lewistown, Washington Township, Logan County, Ohio.

Being across the Board of Education of Washington Local School District 9.33 acre tract as deeded and described in Volume 118, Page 308 of the Logan County Records of Deeds and being more particularly described as follows:

Beginning at a railroad spike found on the center-line of County Highway 54 on the northeasterly corner of the Kenneth May 2.41 acre tract, (O.R. 47, Pg. 305).

THENCE, with the northerly line of the said 2.41 acre tract, N 52°-39'-41" W, a distance of 20.00 feet to a point on the center-line of the 20 feet wide storm easement at the TRUE POINT OF BEGINNING.

THENCE, with the center-line of the said 20 feet wide storm easement, the following two (2) courses:

N 36°-35'-10" E, a distance of 117.05 feet to a point.

N 10°-12'-00" W, a distance of 155.55 feet to a point at the terminus of the easement on a southerly line of a 3.512 acre tract surveyed out of the aforementioned 9.33 acre tract.

The basis for bearings is the center-line of Center Street and County Highway 54, (66 feet wide), north of Station 17+14.3 as described in the Logan County Engineers Field Book 692, Page 11, being S 32°-50'-10" W, and all other bearings are from angles and distances measured in a field survey by Lee Surveying and Mapping Co., Inc. on April 30, 1998.

Description prepared by:

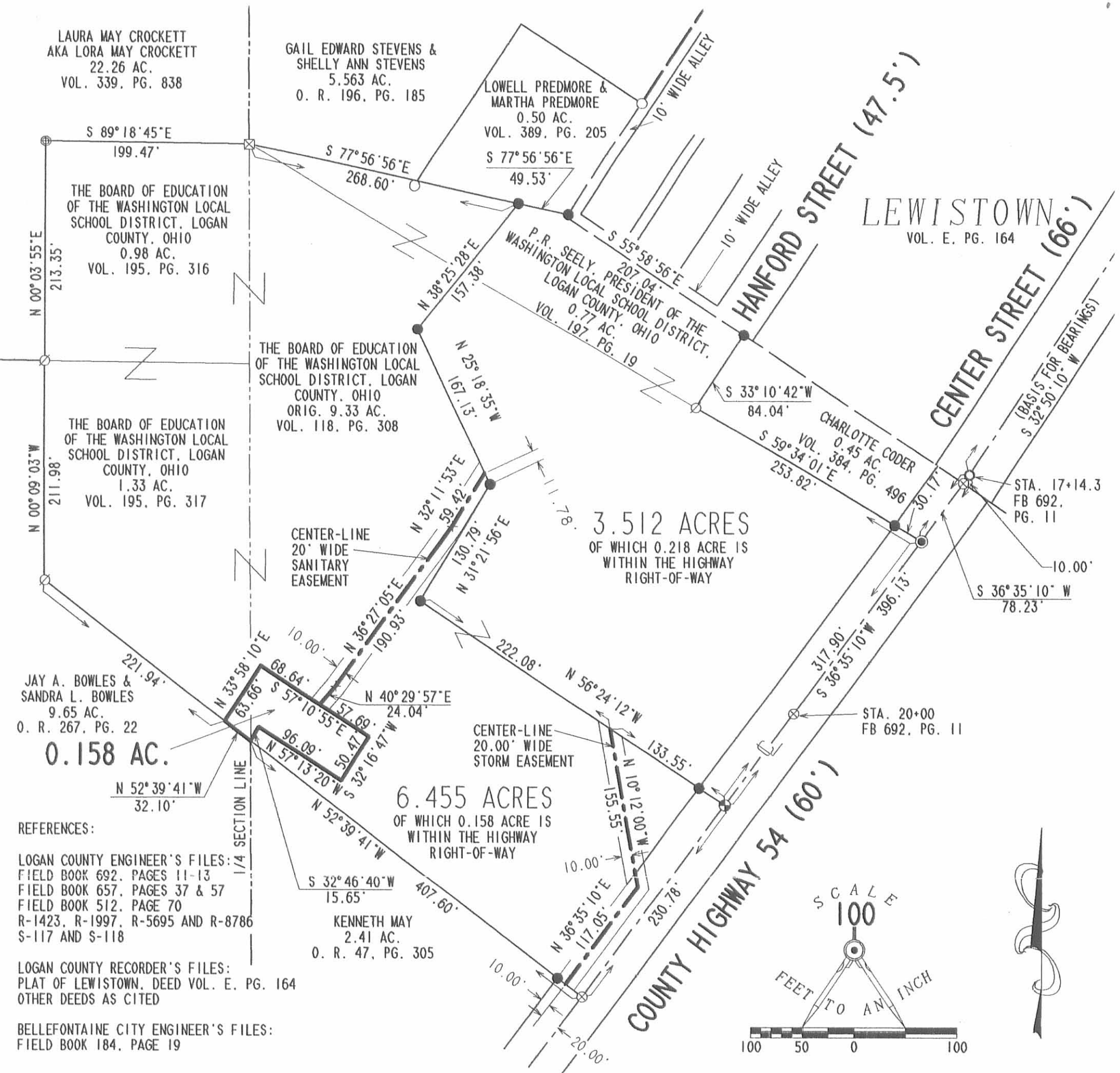


Jeffrey I. Lee
Jeffrey I. Lee
Professional Surveyor 6359
May 1, 1998

L-2568

ORIGINAL STAMP IN GREEN

1423 3D-3



Laura May Crockett
AKA Lora May Crockett
22.26 AC.
VOL. 339, PG. 838

Gail Edward Stevens &
Shelly Ann Stevens
5.563 AC.
O. R. 196, PG. 185

Lowell Predmore &
Martha Predmore
0.50 AC.
VOL. 389, PG. 205

LEWISTOWN
VOL. E. PG. 164

THE BOARD OF EDUCATION
OF THE WASHINGTON LOCAL
SCHOOL DISTRICT, LOGAN
COUNTY, OHIO
0.98 AC.
VOL. 195, PG. 316

THE BOARD OF EDUCATION
OF THE WASHINGTON LOCAL
SCHOOL DISTRICT, LOGAN
COUNTY, OHIO
ORIG. 9.33 AC.
VOL. 118, PG. 308

THE BOARD OF EDUCATION
OF THE WASHINGTON LOCAL
SCHOOL DISTRICT, LOGAN
COUNTY, OHIO
1.33 AC.
VOL. 195, PG. 317

P.R. SEELY, PRESIDENT OF THE
WASHINGTON LOCAL SCHOOL DISTRICT,
LOGAN COUNTY, OHIO
0.77 AC.
VOL. 197, PG. 19

CHARLOTTE CODER
VOL. 384, PG. 496
0.45 AC.

Jay A. Bowles &
Sandra L. Bowles
9.65 AC.
O. R. 267, PG. 22
0.158 AC.

6.455 ACRES
OF WHICH 0.158 ACRE IS
WITHIN THE HIGHWAY
RIGHT-OF-WAY

3.512 ACRES
OF WHICH 0.218 ACRE IS
WITHIN THE HIGHWAY
RIGHT-OF-WAY

REFERENCES:
LOGAN COUNTY ENGINEER'S FILES:
FIELD BOOK 692, PAGES 11-13
FIELD BOOK 657, PAGES 37 & 57
FIELD BOOK 512, PAGE 70
R-1423, R-1997, R-5695 AND R-8786
S-117 AND S-118

LOGAN COUNTY RECORDER'S FILES:
PLAT OF LEWISTOWN, DEED VOL. E. PG. 164
OTHER DEEDS AS CITED

BELLEFONTAINE CITY ENGINEER'S FILES:
FIELD BOOK 184, PAGE 19

LEGEND

- 5/8" IRON ROD SET
- ⊕ RAILROAD SPIKE SET
- ⊗ RAILROAD SPIKE FOUND
- 1/2" IRON ROD FOUND
- 5/8" IRON ROD FOUND
- ⊘ 1" IRON ROD FOUND
- ⊕ 1-1/4" IRON ROD FOUND
- ⊗ 1-1/2" SQ. IRON BAR FOUND
- 1-1/2" IRON ROD FOUND

**SURVEY OF A 20.00' WIDE STORM SEWER EASEMENT,
A 20.00' WIDE SANITARY SEWER EASEMENT AND
A 0.158 ACRE SEWER EASEMENT
ACROSS A 6.455 ACRE TRACT SURVEYED FROM
THE BOARD OF EDUCATION OF THE WASHINGTON
LOCAL SCHOOL DISTRICT, LOGAN COUNTY, OHIO
0.98 ACRE TRACT
VOLUME 195, PAGE 316
AND THE BOARD OF EDUCATION OF WASHINGTON
TOWNSHIP, LOGAN COUNTY, OHIO
1.33 ACRE TRACT
VOLUME 195, PAGE 317
AND THE BOARD OF EDUCATION OF WASHINGTON
TOWNSHIP, LOGAN COUNTY, OHIO
ORIGINAL 9.33 ACRE TRACT
VOLUME 118, PAGE 308
SECTION 24, TOWN 7, RANGE 8
WASHINGTON TOWNSHIP
LOGAN COUNTY, OHIO**



ORIGINAL STAMP IN GREEN

SURVEYED BY:
Jeffrey I. Lee
JEFFREY I. LEE
PROFESSIONAL SURVEYOR 6359
APRIL 30, 1998

COPYRIGHT 1998 BY:
LEE SURVEYING & MAPPING CO., INC.
117 North Madriver Street
BELLEFONTAINE, OHIO 43311
(937) 593-7335

2 WORKING DAYS
BEFORE YOU DIG
CALL TOLL FREE **800-362-2764**
OHIO UTILITIES PROTECTION SERVICE.

INDEXED ON MAP
1423 3P