

PATRICK Survey S.W. 1/4 Sec 19 T7 R9
 Washington Twp
 Book 97 Page 62-66

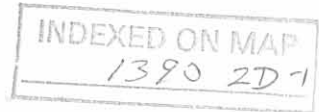
INDEXED ON MAP
 1390 1P

ANK

Received 1-27-92

Map Room 01-28-92

DANIEL E. GILBERT, P.S.
Ohio Reg. Sur. No. 5402
400 N. Park St.
Bellefontaine, Ohio 43311
Telephone: 1 (513) 593-1428
January 7, 1992



The Penn Central Corporation
(T. & O.C. RR R/W)

I.D. No. OHD-000-M43 (pt).

The following described real estate situated in the Township of Washington, County of Logan, State of Ohio and being a part of Sections No. 19-30, Town 7 South, Range 9 East and being more particularly described as follows:

Beginning at a R. R. Spike set in the north right of way line of the T. & O. C. RR. and the centerline of T. R. No. 33 at the centerline Station No. 167+72.25 of T. R. No. 33 as shown in Logan County Engineers Field Book No. 588 Page 59;

Thence with the centerline of T. R. No. 33, S. 13°28'00" W. 81.58 feet to a R. R. Spike set in the south right of way line of said T. & O. C. RR., passing through a P. K. Nail set on the centerline of said T. & O. C. RR. at 40.79 feet, (Note: The centerline of the T. & O. C. RR. is the Basis of Bearing for this survey-N. 40°40'00" W);

Thence with the south right of way line of said T. & O. C. RR., N. 40°40'00" W. 1,547.37 feet to a square concrete corner post found in the line between Sections No. 30 and 19, passing through a 5/8" x 30" Rebar set on the west right of way line of T. R. No. 33 at 37.08 feet;

Thence with the line between said sections, N. 89°10'56" W. 22.69 feet to a 5/8" x 30" Rebar set;

Thence continuing with the south right of way line of said T. & O. C. RR., N. 40°40'00" W. 1,648.48 feet to a 5/8" x 30" Rebar set, passing through a 5/8" x 30" Rebar set on the line between Phillip M. McPherson and Robert P. Berg at 930.04 feet;

Thence N. 49°20'00" E. 100.00 feet to a 5/8" x 30" Rebar set on the north line right of way line of said T. & O. C. RR., passing through a R. R. Spike set on the centerline of said railroad at 50.00 feet;

Thence with the north right of way line of said T. & O. C. RR., S. 40°40'00" E. 1,737.00 feet to a 5/8" x 30" Rebar set in the line between Sections No. 19 and 30, passing through 5/8" x 30" Rebar found at the ~~most~~ westerly corner to John Stemble's 3.083, Acre tract at

(con't)

414.80 feet and a 5/8" x 30" Rebar found at the southeast corner of Stemble's tract and the north line of Phillip M. McPherson's tract at 807.08 feet;

Thence with the line between said sections, N. 89°10'56" W. 22.69 feet to a 5/8" x 30" Rebar set;

Thence continuing with the north right of way line of said T. & O. C. RR., S. 40°40'00" E. 1,441.15 feet to the place of beginning, passing through a 5/8" x 30" Rebar set on the west right of way line of T. R. No. 33 at 1,404.07 feet, containing a Total of 268,070.52 square feet or 6.154 Acres, more or less.

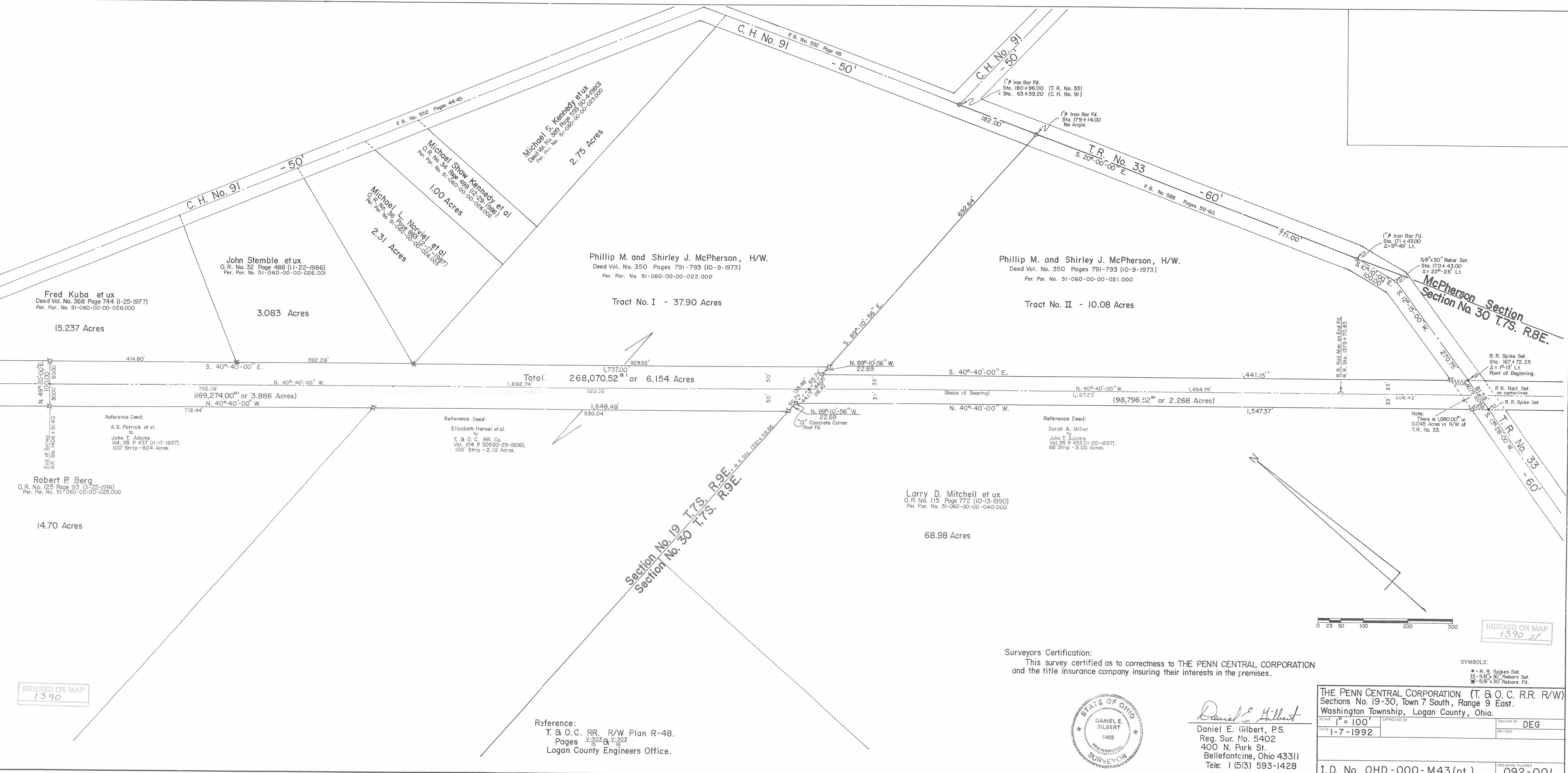
Of the above described tract, there is 169,274.00 square feet or 3.886 Acres in Section No. 19, T.7S., R.9E. and 98,796.52 square feet or 2.268 Acres in Section No. 30, T.7S., R.9E. There is also 1,980.00 square feet or 0.045 Acres in the right of way of T. R. No. 33.

I hereby certify that this description is the result of a field survey completed by me on January 7, 1992.



Daniel E. Gilbert
DANIEL E. GILBERT, P.S.
REG. SUR. NO. 5402
400 N. PARK ST.
BELLEFONTAINE, OHIO 43311
TELEPHONE: 1 (513) 593-1428

INDEXED ON MAP
1390 2D2



Phillip M. and Shirley J. McPherson, H/W.
Deed Vol. No. 350 Pages 791-793 (10-9-1973)
Per. Par. No. 51-060-00-00-022.000

Phillip M. and Shirley J. McPherson, H/W.
Deed Vol. No. 350 Pages 791-793 (10-9-1973)
Per. Par. No. 51-060-00-00-021.000

Total: 268,070.52^{sq ft} or 6.154 Acres

752.76^{sq ft}
(169,274.00^{sq ft} or 3.886 Acres)
N. 40°-40'-00" W.

(98,796.52^{sq ft} or 2.268 Acres)
N. 40°-40'-00" W.

Reference Deed:
A.S. Patrick et al.
to
John T. Adams
Vol. 95 P. 437 (11-17-1897).
100' Strip - 80.4 Acres.

Reference Deed:
Elizabeth Hensel et al.
to
T. & O. C. RR. Co.
Vol. 104 P. 308 (10-29-1906).
100' Strip - 2.10 Acres.

Reference Deed:
Sarah A. Miller
to
John T. Adams
Vol. 95 P. 433 (11-20-1897).
66' Strip - 3.00 Acres.

Note:
There is 1,980.00^{sq ft} or
0.045 Acres in R/W of
T.R. No. 33.

Section No. 19 T.7S. R.9E.
Section No. 30 T.7S. R.9E.

McPherson Section No. 30 T.7S. R.8E.

INDEXED ON MAP
1390 2P

INDEXED ON MAP
1390

Reference:
T. & O.C. RR. R/W Plan R-48.
Pages V-303 & V-303
15 & 16
Logan County Engineers Office.

Surveyors Certification:
This survey certified as to correctness to THE PENN CENTRAL CORPORATION
and the title insurance company insuring their interests in the premises.



Daniel E. Gilbert
Daniel E. Gilbert, P.S.
Reg. Sur. No. 5402
400 N. Park St.
Bellefontaine, Ohio 43311
Tele: 1 (513) 593-1428

THE PENN CENTRAL CORPORATION (T. & O.C. R.R. R/W)
Sections No. 19-30, Town 7 South, Range 9 East.
Washington Township, Logan County, Ohio.

SCALE: 1" = 100'
DATE: 1-7-1992
DRAWN BY: DEG
REVISED:

I.D. No. OHD-000-M43(pt.)
DRAWING NUMBER: 092-001

SYMBOLS:
● - R.R. Spikes Set.
⊠ - 5/8" x 30" Rebars Set.
⊠ - 5/8" x 30" Rebars Fd.

Survey for

Wm. Shields

Washington

Township

Page

1

Aaron + Etta Best

to

Wm. Shields

Vol. 114 Page 139

Date 1913

Sec. 19 T. 7 R. 9

Surv. 1390 30-1

INDEXED ON MAP

Thence

Being S. part of S. W. Quar. Sec. 19 T. 7 S.

R. 9 E. Commencing at the S. W. corner of

said Qr. at a stone:

- N. 35° E. 10.55½ ch. to a stone on W. line of Section

- S. 89° 55' E. 26.35 ch to a stone corner line running north and 5.49? ch from corner in pipe (see other side)

- same bearing 9.65 ch. to corner on McPherson section line, 81½ lbs on line S. 19° 30' E from a stone planted in center line of pipe

- S. 19° 30' E. 11.21½ ch to a stone corner in said McPherson Section and South line ^{Sec. 19}

- N. 89° 55' W. with said line 39.72 ch to stone corner at place of beginning 40 acres less

R.R. rt. of way.)
Description of
Alex. Patrick
to
Elizabeth Hensel

Vol. 84
P. 632
6/13, 1895

Dist. given is 5.45 instead of 5.49
See also P. 2



Survey for Wm. Shields

Washington

Township

Page

2

Alex. Patrick

to

Samuel Patrick

Vol. 84 Page 630

Sec. 19 T 7 R 9

Date 1895-6/5

Surv. 1390 3D-3

INDEXED ON MAP

1390 3D-3

Thence

Situated in W. pt. S. W. Qr. Sec. 19 T 7 R. 9 E
Commencing at a stone corner at the N. W. cor.
of said S. W. Qr.

— S. $89^{\circ}55'E$. with the N. line of said Qr. 6.71 ch
to a stone corner in center of pipe.

— S. $27^{\circ}10'E$ 6.22 $\frac{1}{2}$ ch to an Iron barrow tooth on
east side of center line of pipe

— S. $1^{\circ}E$. 10.60 ch to a stone corner to south
of curved center of pipe

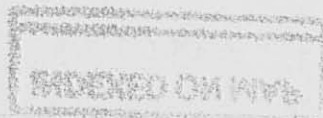
— S. $62^{\circ}65'E$. 18.53 ch to a point in center line
of said pipe

— South 5.49 ch ? (see page 1) to a point 9.65
ch. from a corner on the W. line of M. P. Hession
Sec., which corner is $81\frac{1}{2}$ chs S. $19^{\circ}30'E$
from a corner stone. Also on the S. side

line

- Thence from the point named N. $89^{\circ}55'W$
26.35 ch. to a stone corner on the W. line
of said section 10.55 $\frac{1}{2}$ ch. N. of S. W. corner
of said section
- N. $35^{\circ}E$ with said Sec. line 29.74 $\frac{1}{2}$ ch. to
beginning 45.04 acres.

3D-4



Survey for Wm. Shields

Washington

Township

Page

3

Clay Patrick
to
Milton Patrick

Vol. 84 Page 631

Sec. 19 T. 7 R. 9

Date 6/15, 1895

Surv. 1390 305

INDEXED ON MAP

1390 305

Thence

E. Pt. S.W. $\frac{1}{4}$ Sec. 19

Commencing at stone corner 6.71 ch S. $89^{\circ}55'$ E.
from the N.W. corner of said Qr.

with same bearing and N. line of said Qr. 18.38

ch to a stone corner on W. line McPherson
Section, said stone is S. $19^{\circ}30'$ E 4.21 ch
from said McPherson Sect. N.W. corner

— S. $19^{\circ}30'$ E. with the McPherson line 35.32
ch. to and across a stone corner in said
Sec. line

— Thence on same bearing $81\frac{1}{2}$ lbs to
a corner

— N. $89^{\circ}55'$ W with a line parallel
with the south line of said Qr. 9.65 ch

- to a corner
- N. 5.49 ch (see page 1) to a stone corner center line of pipe which corner is 10.52 ch with the center line of said pipe to line stone crossed on McPherson Section.
 - from corner in pipe N. 62° 65' W to a stone corner
 - N. 1° W. 10.60 ch. to an iron harrow tooth in pipe
 - N. 27° 10' W 6.22½ ch to stone corner & place of beginning 44.26 acres excepting 2 acres heretofore sold. out of extreme S.E. corner of said tract

966
 296
 1991

INDEXED ON MAP
 1390 37-6

Survey for Wm. Shields

Washington

Township

Page

4

James Hogge
to
Noah Miller

Vol. 55 Page 184

Sec. 30 T. 7 R. 9

Date 1877

Surv. _____

Thence

N. W. 4th cor. Qr of Sec. 30 T. 7 R. 9.
72.10 acres

INDEXED ON MAP

1390 5D-7

Survey for Wm. Shields, Wash.

Township

Page

5

from Mary R. Miller et al
to
Elwood B. Miller

Vol. 113 Page 102

Sec. 30 T. 7 R. 9

Date 1913

Surv. _____

Thence

Being S. W. $\frac{1}{4}$ ^{of} $\frac{1}{4}$ ^{of} Sec. 30 containing
37.66 acres

also the east $\frac{1}{4}$ ^{of} $\frac{1}{4}$ ^{of} Sec. 30
containing 46.40 acres

excepting a strip 66 feet wide
for R.R.

INDEXED ON MAP

1390 3D8

Patrick Dunn Oct 29th 1907J. W. Plum } chain carriers
Scott Johnson }

Start at Stone in Sec line

SRR \leftarrow SRR \rightarrow E 44 $^{\circ}$ 29'

to cent pike.

Thence north pike S 22 $^{\circ}$ 10' W410.85 to iron barbed teeth on east
edge of gravel on pike and 1325' of
stone planted on east side pike.

Thence S 1 E north pike 699.6

to stone SRR of angle in pike

and 22 1/2' SRR cut gravel at

turn in road.

Thence S with cent pike

1223' to post, stake 9' each side

1900' cut ∇ for dist.

See Book C Page 322

1390

INDEXED ON MAP

Start at stone 9th Sec line S 22 $^{\circ}$ Sec 19N 19 $^{\circ}$ 30' W 800' cut ∇ for dist.Start at stone SRR \leftarrow Secor 44 $^{\circ}$ W with Sec line675.2' to stone \leftarrow Handed ∇ from Patrick

Dunn from above Stone with Sec line

or 44 $^{\circ}$ W 1984.7' to SRR \leftarrow gravel at

Stone Pat Martin stone

1984.7 - 21.4 = 1963.3 W from Patrick

Start at stone in Sec line \leftarrow Handed ∇

from Patrick. Thence with Sec line

Handed or 89 $^{\circ}$ 3/4 E. 2000' S 22 $^{\circ}$ 1/2 E.2300' cut ∇ . Fall south of stone 230'pike north of Handed \leftarrow 28.6'Set ∇ at N E \leftarrow Handed. 87 1/2' links =2000' ∇ on a of stone \leftarrow pike

740.2' or 30' or

Start at SRR \leftarrow Sec 19

Oct 30 - 1902

Planted boulder stone 2.1' x 1'
x 4' at 21.4' N of place where
line cut stone for NW \angle Hessel
40 a. being 696.6' = 10.55 1/2 ch

N. from S or E Dec 19 - 7 - 9

Present E. N. Plum. Dam Patrick
E/ N. S. Johnson

Wit to above stone \angle in or line Sec 19

Elm 14" S 54 1/2 or 165.3

W Oak 16 S 75 1/4 or 77.12'

Start at above stone as next

thence S 89 1/2 E

Shell 5.9' south of \angle at pike on M & P line
at 1579.6 stake in line moved N 39 to cor-
rect line.

at 1739.1 \angle in line more N 4.31 to N line

at 2371.6 stake N \angle Hessel

Planted flat line stone 1.9" x 10" x 4"
in north line Hessel at 1739.1 E
of stone NW \angle Hessel, same being

Patrick Durr.

\angle between Dam E/ Milt Patrick
with Shel Hick 8" at 60 1/2 E 16.4 ft
" Jack Oak 4" N 33 1/4 or 23.35 ft
" Red Oak 7" S 9 or 11.8 ft

Start at stone S or of angle in pike
thence with pike E/ line to stone at M & P
Dec. S 63 1/4 E. 122.3' planted stone
boulder 18" x 9" x 6" in cent pike
with Burr Oak 16" S 4 1/2 E 27.9'
" Shel Hick 8" S 39 or 34.3'

Start at above stone in pike

S 74 or 355.6 to stone in N line Hessel
and \angle to Dam E/ Milt Patrick

Wise from above stone in pike S 63 1/4 E

688.2 to stone angle in pike at M & P line
(whole dist 1911.2' = 122.3' + 688.2')

above stone at angle in pike 116.5' N. E. of
cut ground on pike

Patrick Durr con. Oct 30-02
Planted lime stone 19" x 12" x 4"
at NE \angle Hensel land on M line

M & P line cut gravel on pike road. 8800'

at it Stone angle pike N 2.0 W 54'

" W. Oak 7" S 32 1/4 W 44.1'

" Red Oak 18" S 87 1/4 W 39.7'

meas along M & P line from S \angle

Dec 19 N 20 W 440.2' to NE \angle Hensel
and 784' to stone at ang pike on M & P

meas from stone in angle of pike

and M & P line N 2.0 W 2049.8'

to NE \angle M. Patrick stone on bank
of creek.

meas from above stone NE \angle M.

Pat meat on his N line 1215' to

cut pike

1390

INDEXED ON MAP

Hoover (Dand) Estate

Surrey #9905. Robt Hoover }
Geo Hoover } Chain
meas

Course of south line Durr 9905 N 82 1/4 E

" M line Hoover land N 7 3/4 W

at 750' \angle Horn farm in Durr line

Oak 15" di N 15 W 46.2'

Black W 5" N 39 1/2 E 36.8'

" Start at 750' \angle Hoover land on Durr

line. With S line Durr 9905 N 82 1/4 E

at 1000' cut D in line

2000 " F.

" 3268.5' cut Patterson pike

S \angle Durr 9905

" Start at S \angle Durr 9905 N with

meas line and cut Patt. pike N 63 1/4 W

1461.5' N \angle Hoover E S \angle J. & M. Cherry

Geo Hoover = 35. a

Robt Hoover = 48 2/3 a

Lavin Bros = 41 2/3 a

105. 1/3 a