

July 28-30

J.S. Crane 1
Jack Carnes 1
Bill Fultz 1

Lunches 1.50

See BOMC 571
Page 60

1334
INDEXED ON MAP

Road # ~~96~~ Washington TP. 31
94

87+99 & Road #6

Oral Davis
Oral Davis
~~x x 70+36~~
Robt. S. Patterson

Frank Howard

Frank Howard
~~46+85 x x~~
Sam'l. Huber

Sam'l. Huber
~~38+58 x x~~
S.L. Horn

12+96 & River

Robt. S. Patterson
~~x x 6125~~
Chas. Dren

S.L. HORN

Chas. Dren 0+80

sta. 0.

Road 94

Washington Township

40' Road.	See Road Record No 2	Page 244
" "	" "	" 260
" "	" "	" 262

Stakes placed along Horn from 20' front

See Book D Page 77

See Book 524 Page 31
Surrey Road. 94 By Crane

15+00

10+00

5+00

1+00 R/W Posts

1334

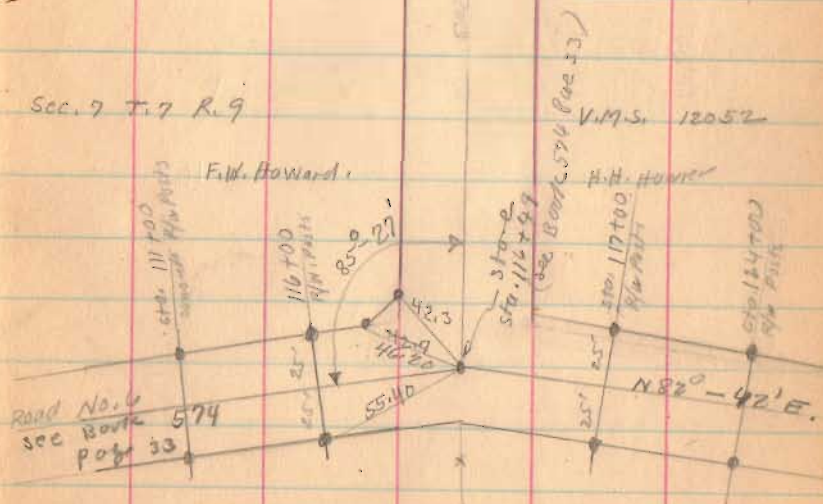
INDEXED ON MAP

March 31-1934
New Day
Wright
Ed. Cart

50

Sept. 15-1937
New Day
F. Wright
G. Wilgus
W. R. Wright
Measured and
Set Stakes
for R/W Posts

Sec. 9 T. 7 R. 9



E. J. Price

Road 94

30+00

25+00

20+00

1334

INDEXED ON MAP

3-31-39

61

stakes set
for Patterson
June 7 1934
near
F.R. Wright
Bill Wright

Caml. Huber

X X 20+63 X

F.W. Howard

17+15
Placed Brick
on Stone
No Angle

Ralph S. Patterson

X 17+15 X

H.H. Hawver

Road 94

56+00

51+00

47+00

42+00

37+00

1818.33
 422.43
 1395.90

34+00

INDEXED ON MAP

1334

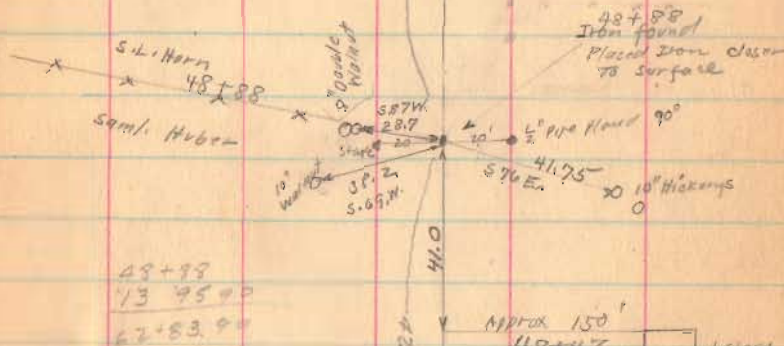
251-34

62

62+53.90

cap & nail 7/31/63

1395.90'

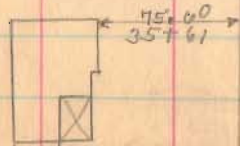


48+98
 13 95.90
 62+83.90

41.0

Approx 150'
48+47

1 story
Frame



2 story
Frame
Construct
Along
RD

1/2" ϕ Placed
Aug 21, 63
WOODS

Road 94

82+00

77+00

71+00

66+00

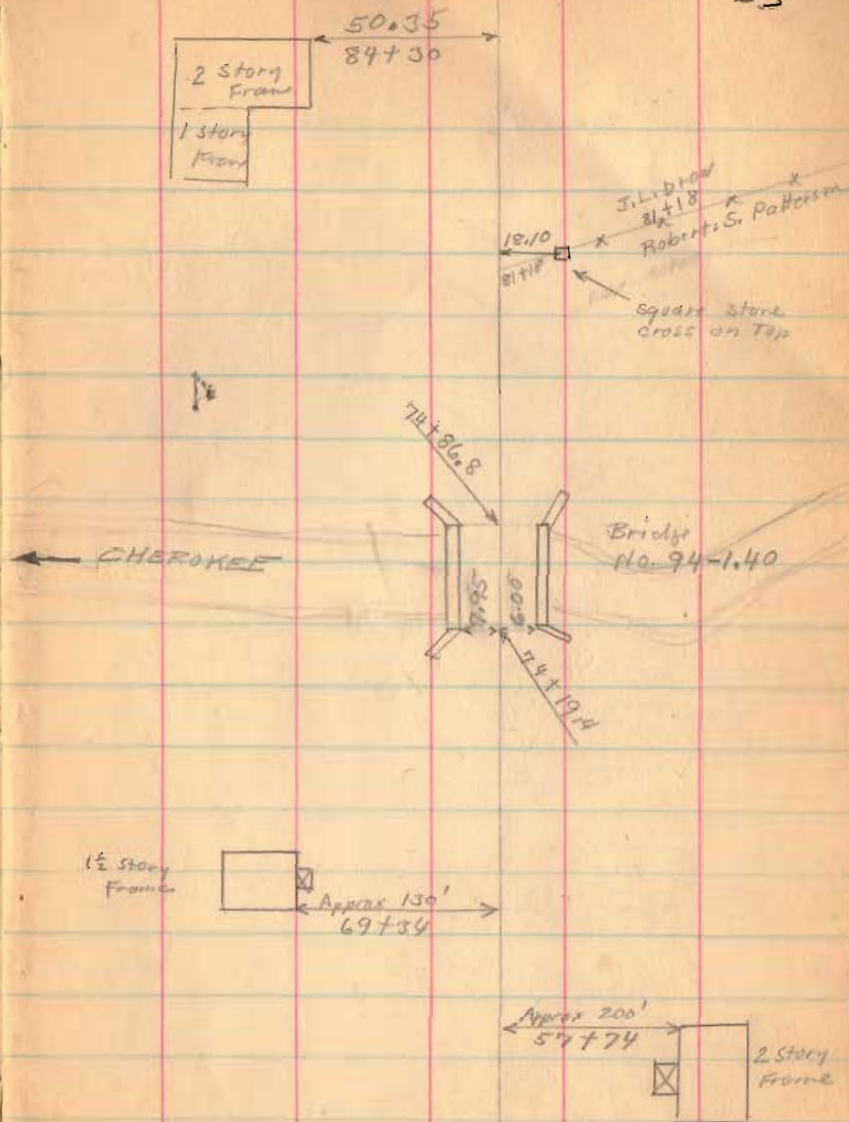
61+00

1334

INDEXED ON MAP

3-31-39

63



Road 94

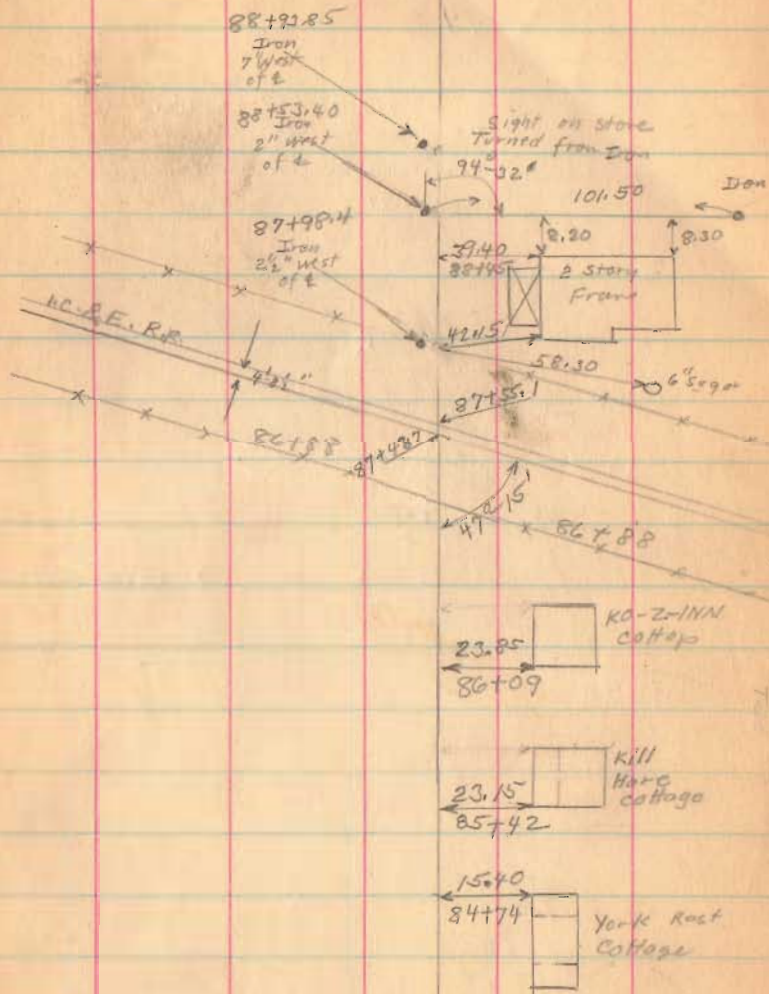
89+00

86+65

INDEXED ON MAP

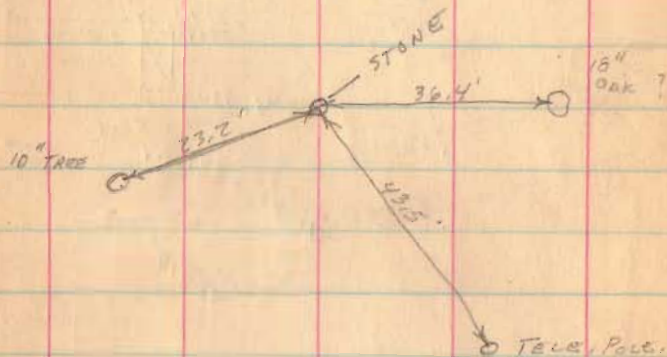
9-15-37

CY



Road 94

11/22/69 D.E.G.
P.K. NAILS IN TREES AND POLE
NEW WITNESSES FOR STONE
STA. 92+91



STA. 92+91
THIS STONE FOUND
APPROXIMATELY
22" BELOW SURFACE.
10/25/69 D.E.G.

1334
INDEXED ON MAP

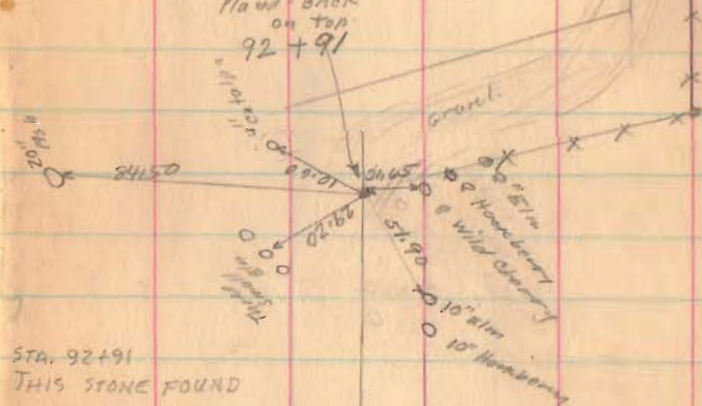
State Route 22
S.H. 167

see Box 417

page 4

stone found
flashed back
on top

92+91



(Continued on page 16)

Road. 94

(Continued from Page 65)

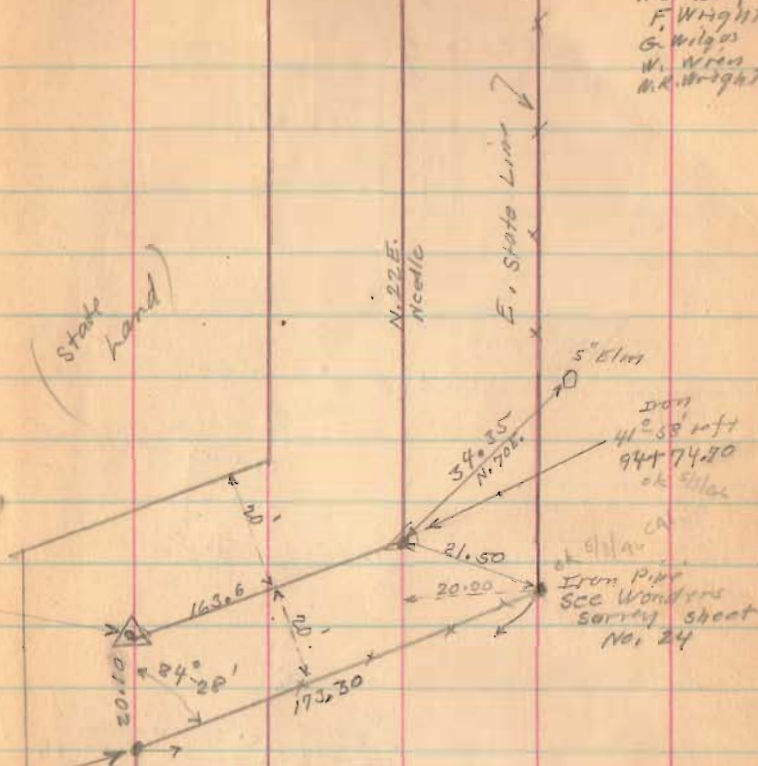
26
Sept. 21-1937
Nick Day
F. Wright
G. Wilges
W. Wren
M.R. Wright

IRON BAR FOUND
10/25/69 DEG.

Found Iron
93+11.10

STONE FOUND
10/25/69 DEG.

stone
sta. 92+91 -
see Page 65



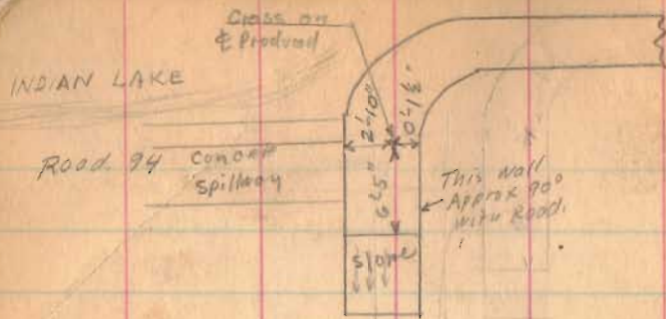
(State road)

99+00

95+00

1334

INDEXED ON MAP



9-21-37

97

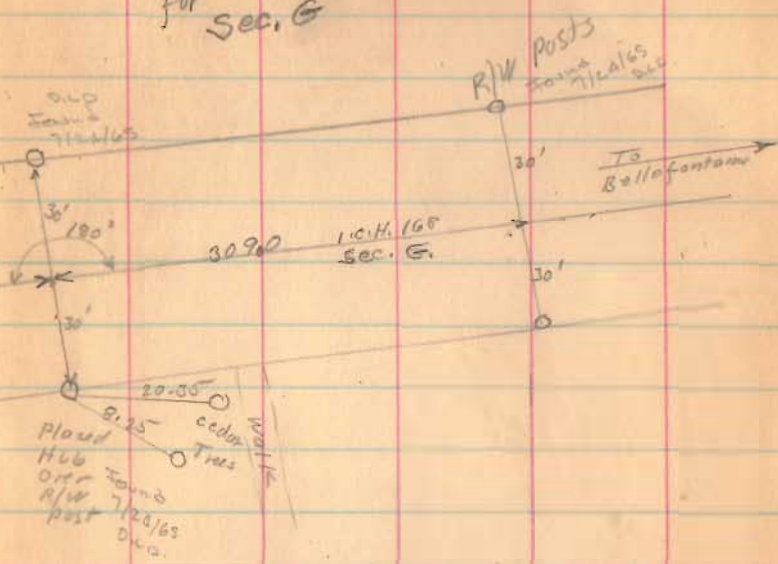
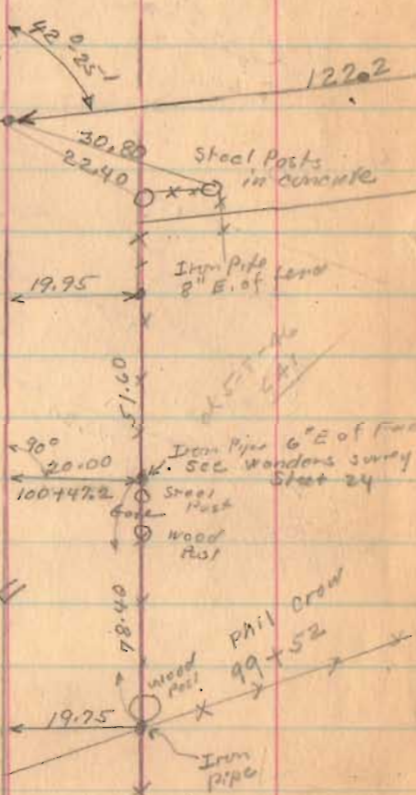
See plan W-1 Page 10
for S.H. 168
Sec. G

L-51

Nail in Black Top
102+90.6

102+00

102+90.6
Sec. F



Length 10290.6 Feet

Length 1.94897 Miles

Length 1.95 Miles

For State Line see Wonders Survey
Sheet No. 24 at State Office
Russells Point.