

Noah Puterbaugh

N. 57° 50' E. 3066.3 Feet.  
N. 57° 50' E. 2501.4 Feet.

39.0 A.

N. 57° 50' E. 564.9 Feet

N. 67° 32' W. 1502.8 Feet  
Proposed Right of Way  
N. 67° 32' W. 1560.5 Feet

15.0 A.

N. 9° W. 997.92 Feet

N. 9° W. 1405.14 Feet

Nathaniel Norviel

N. 9° W. 7491.0 Feet.

CHEROKEE

MANS

RUN

21.3 A.

Inchona Columbus, Ind  
4.6 acres

S. 22° 28' W  
7 Feet

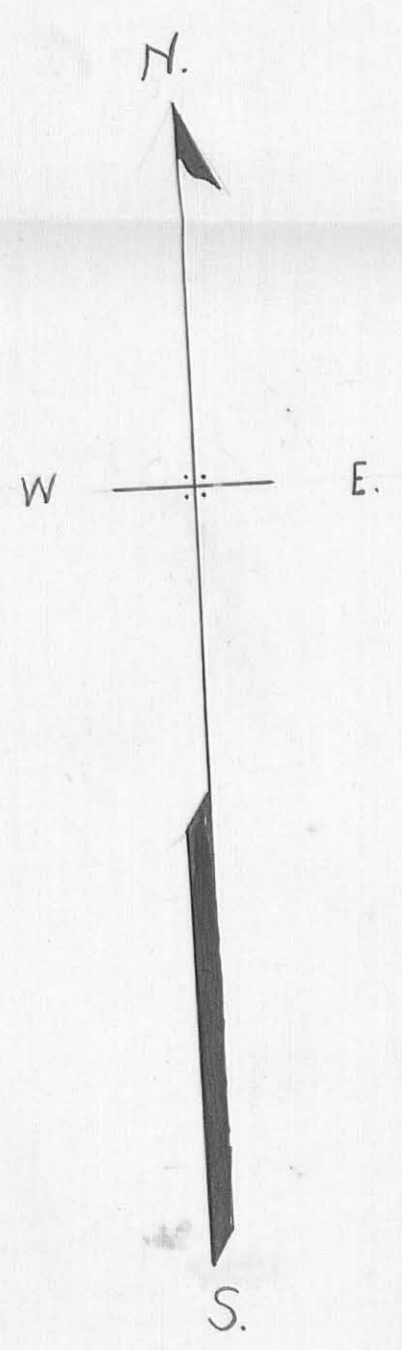
S. 22° 28' W  
7 Feet

S. 67° 32' E. 1153.5 Feet  
Traction Co.  
N. 67° 32' W. 1195.37 Feet

Survey { 10121  
          9946  
          9925

Lucy A. Patterson  
354.37 Acres.

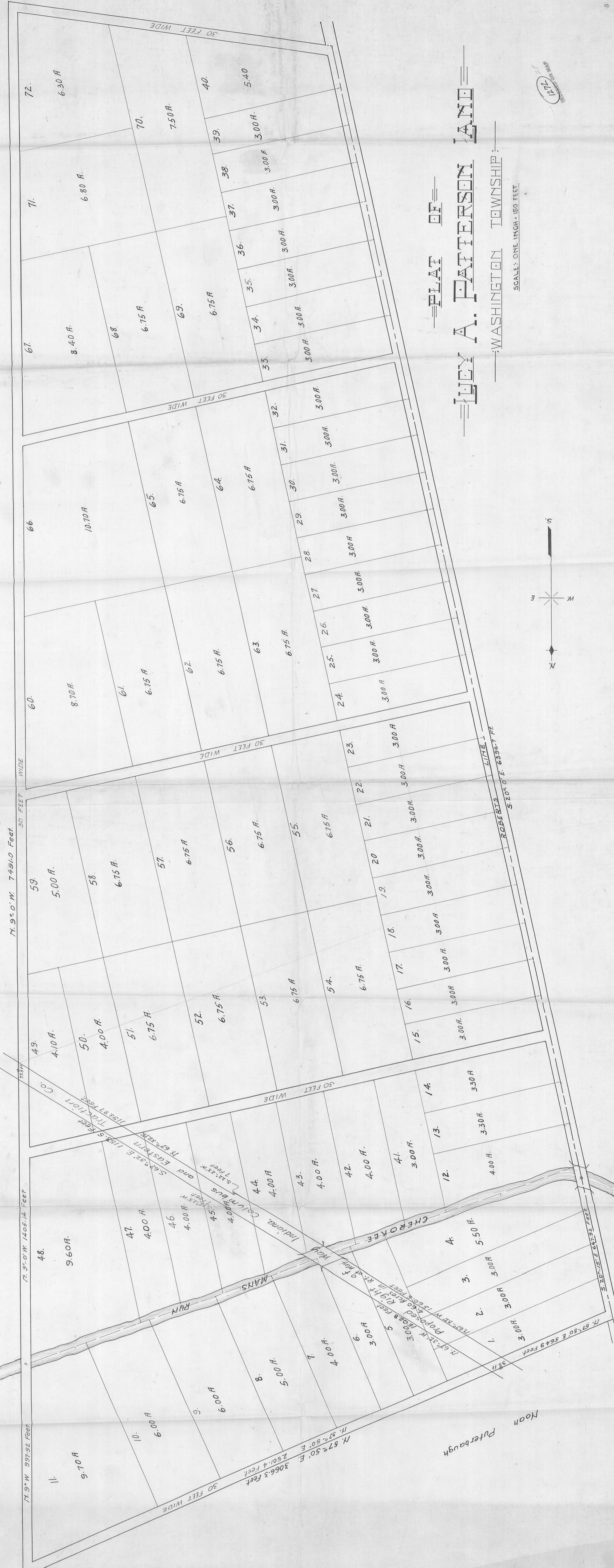
WASHINGTON TOWNSHIP



1272  
INDEXED ON MAP

PLAT OF  
LUCY A. PATTERSON  
LAND

Scale 150' = 1"

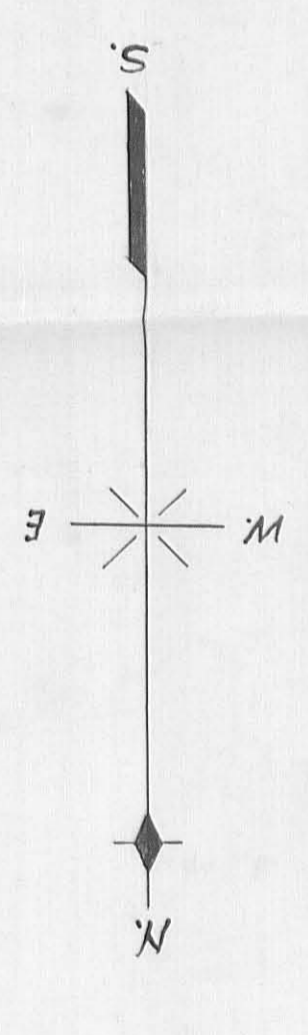


PLAT OF

JESSE A. PATTERSON LAND

WASHINGTON TOWNSHIP

SCALE: ONE INCH = 150 FEET



1241

FIG