

Surv. for

Township
Logan County, Ohio

Begin at NW cor sec thence $S 2 \frac{3}{4} W$ 16.9 $\frac{1}{2}$ ch
thence $S 37 \frac{1}{2} E$ 43.13 ch to a stake 50 lbs $N 87 \frac{1}{2} W$
from the West line of land family James Moore
thence $S 2 \frac{3}{4} W$ = with ahd 50 lbs from said
West line of said Moore 22.66 $\frac{1}{2}$ to a stake a W.O.
24 in 548 W 19 lbs and W. ON $3 \frac{1}{2} E$ 20 lbs thence
87 $\frac{1}{2} E$ 50 lbs to a stone between Moore & Sheward
Walsh
thence $N 2 \frac{3}{4} E$ 40.33 ch to S. T. line
a $\frac{1}{2}$ about 33 in 519 E 46 in
thence with treaty line $S 81 \frac{1}{2} W$ 44.68 ch
to beginning containing 9354 acres

1154 1D
INDEXED ON MAP

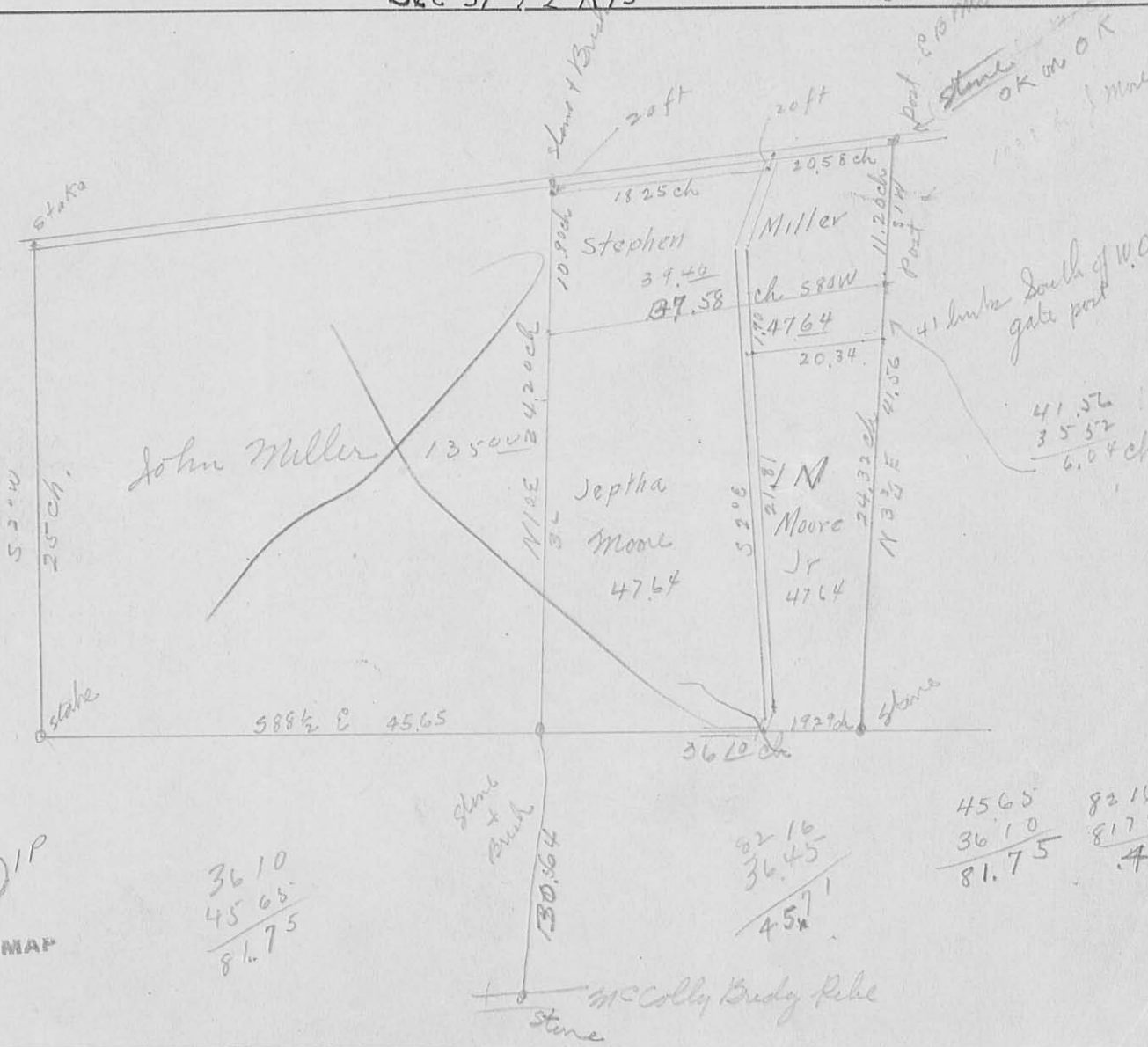
Surv for

~~Moore~~ & Moore

Washington Township

Sec 31 T 2 R 15

Logan County, Ohio



1154 IP
INDEXED ON MAP