

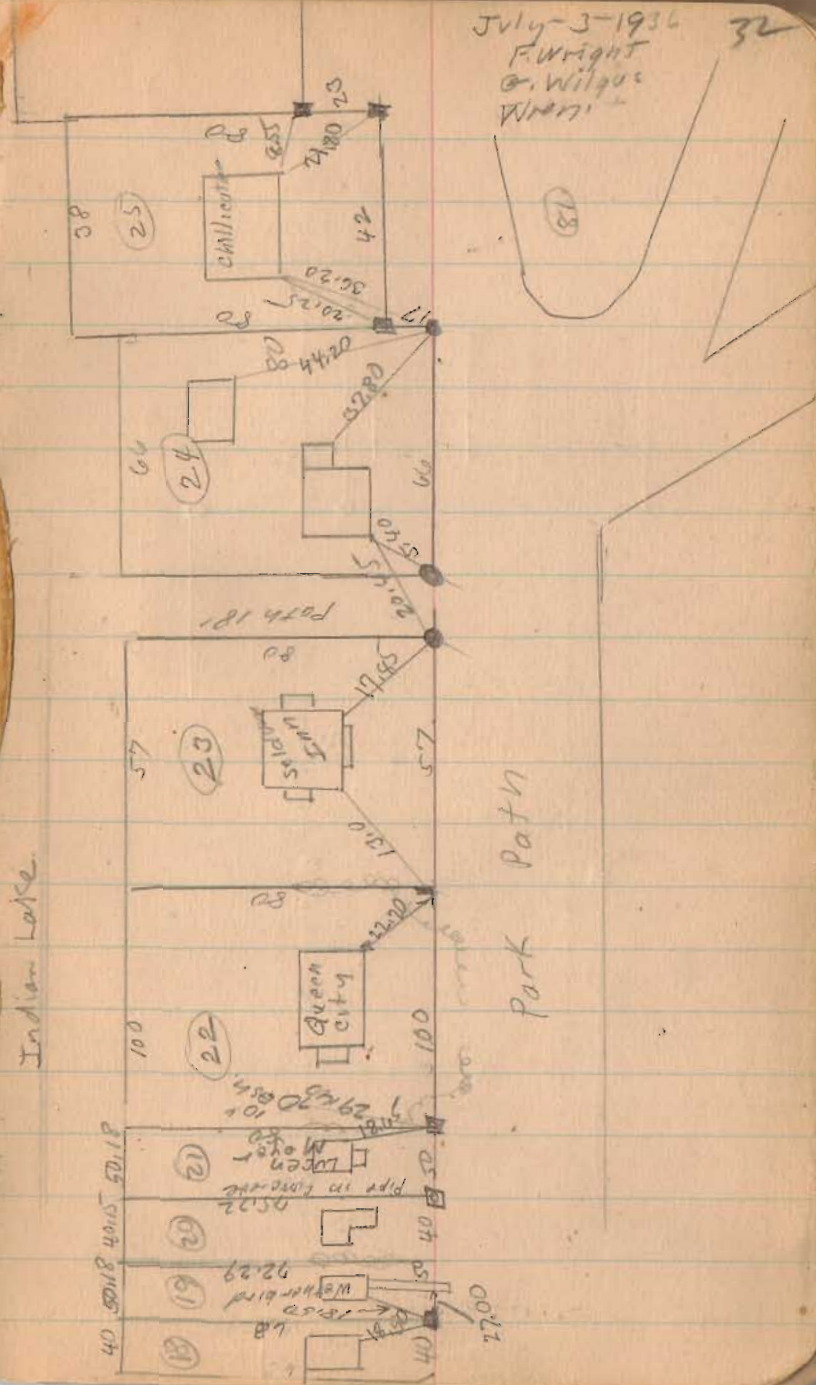
Waterbury's Allotment
Park Path

see Print J-1

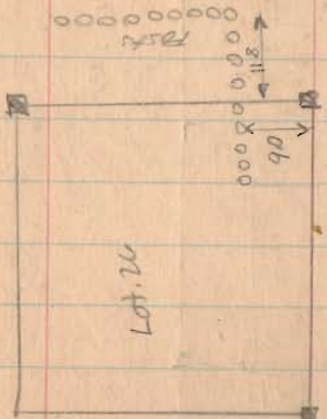
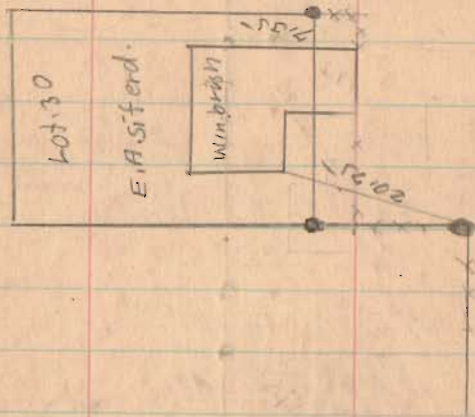
see Pages 40-41-44-45-65

see Map File Warrington Twp
Surrey (1121) Drawer R.

(1121)
INDEXED ON MAP



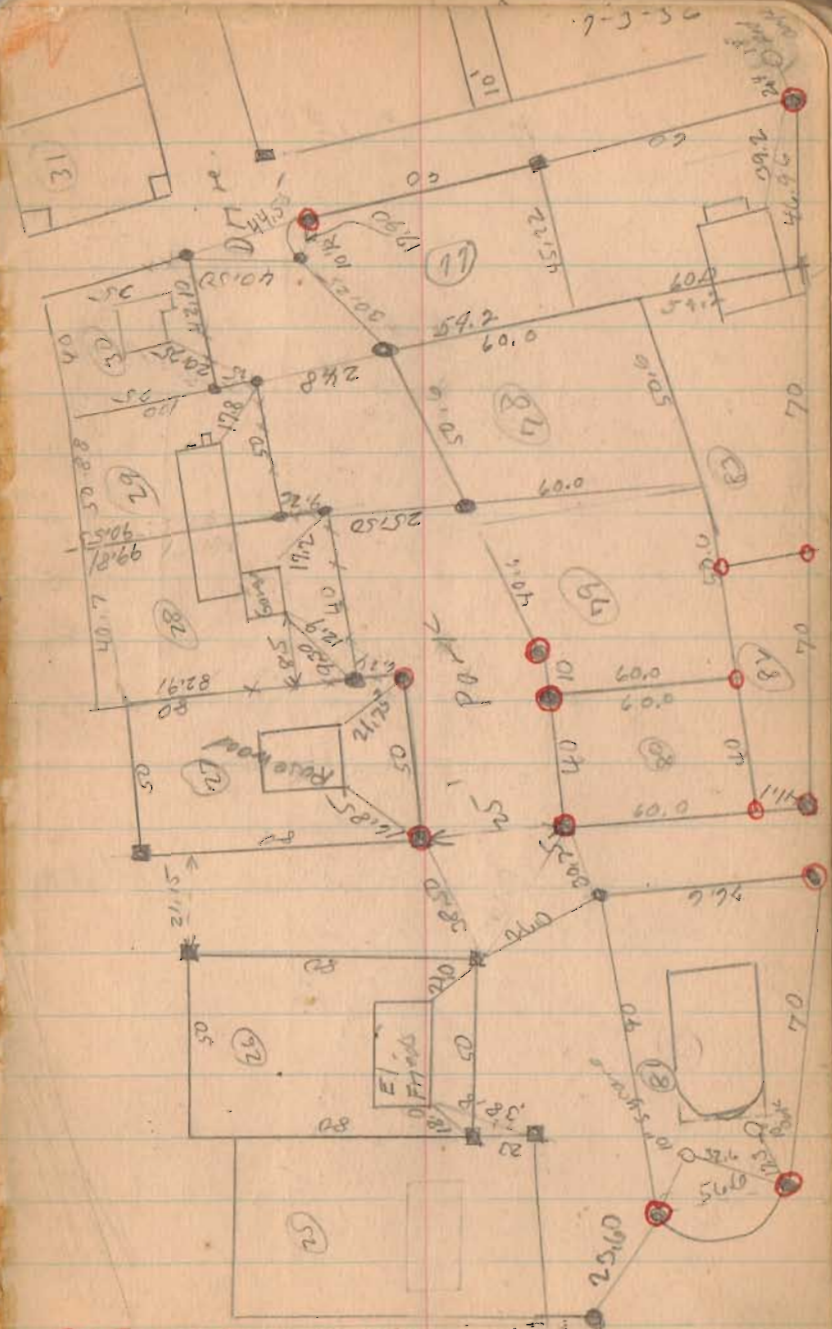
Park Path



(121)

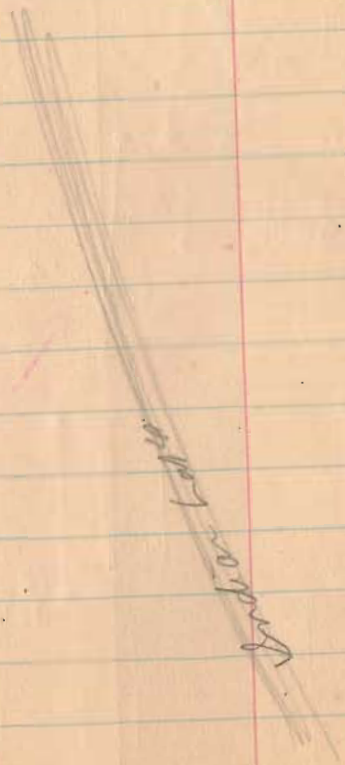
INDEXED ON MAP

7-3-56



O = Irons Found on Set
5/1/56 D.L.D.

Park Path

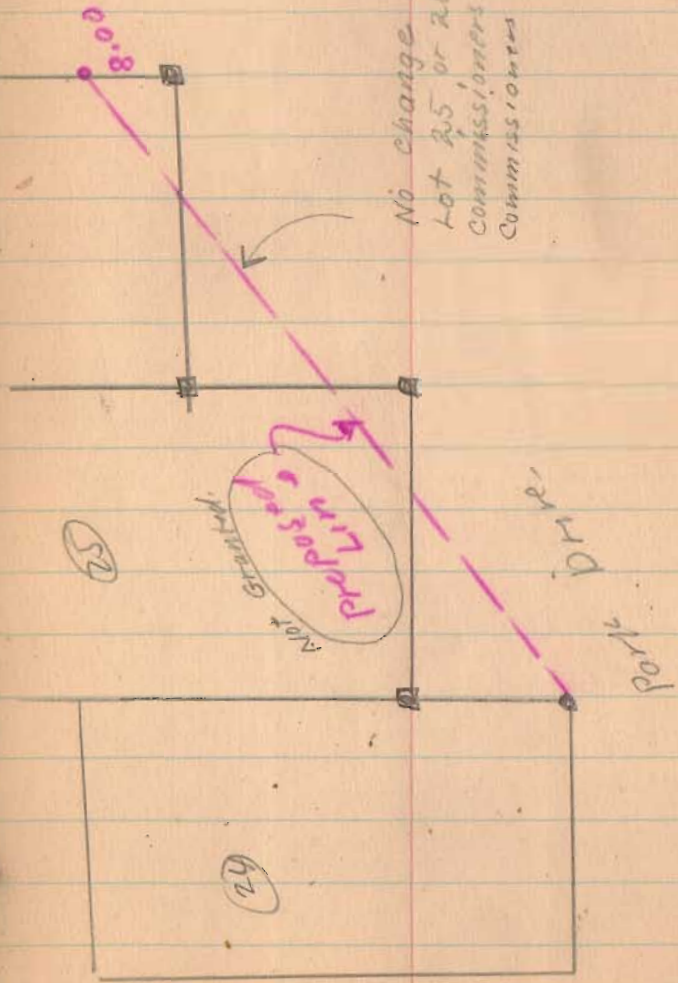


Under Lake

(26)

(121)

INDEXED ON MAP



No change made on
Lot 25 or 26 by
Commissioners July 18-1936
Commissioners Journal 2 Pg 26

D.R.R.

(25)

(26)

34

36

Park Path

7-3-36

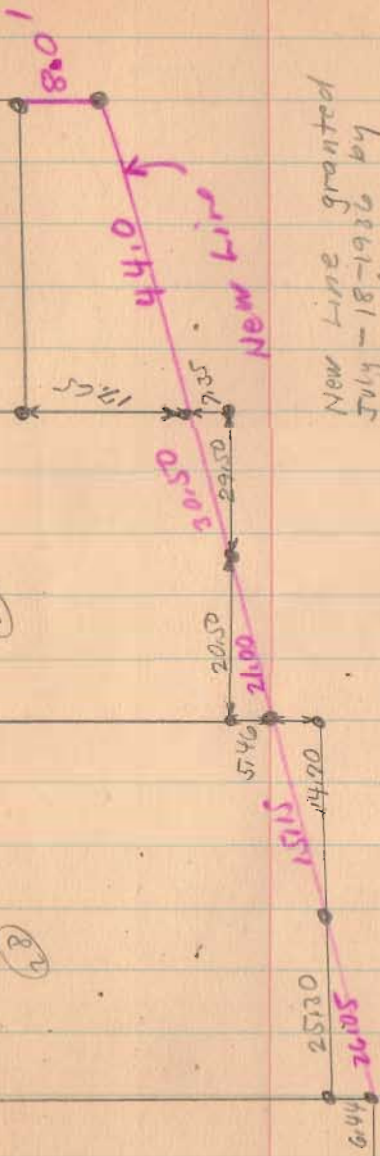
25

(30)

(29)

(28)

(27)



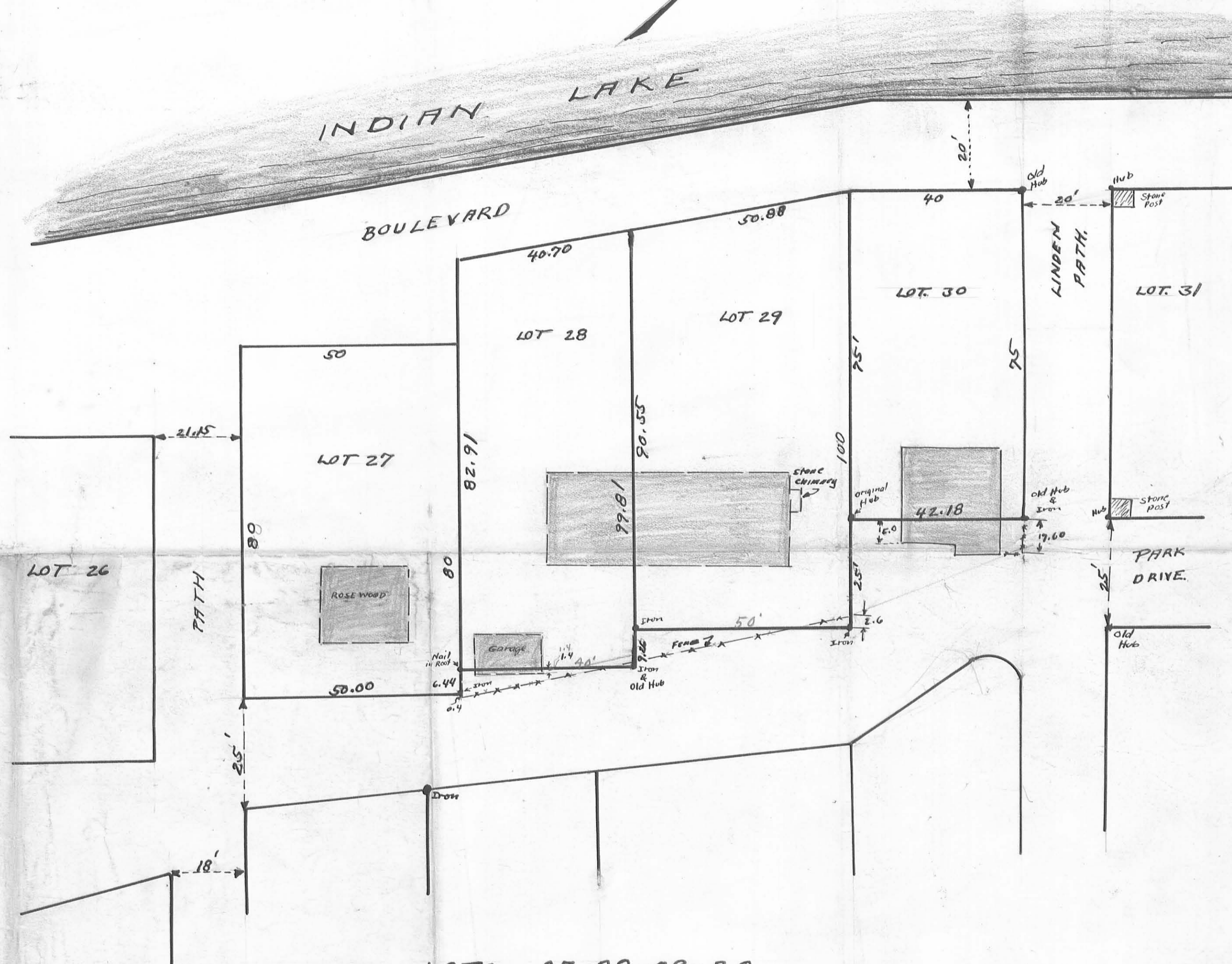
New Line

New Line granted
July - 18-1936 by
Commissioners
Commissioners Journal
No. 2 Page 24

Park
path

(121)

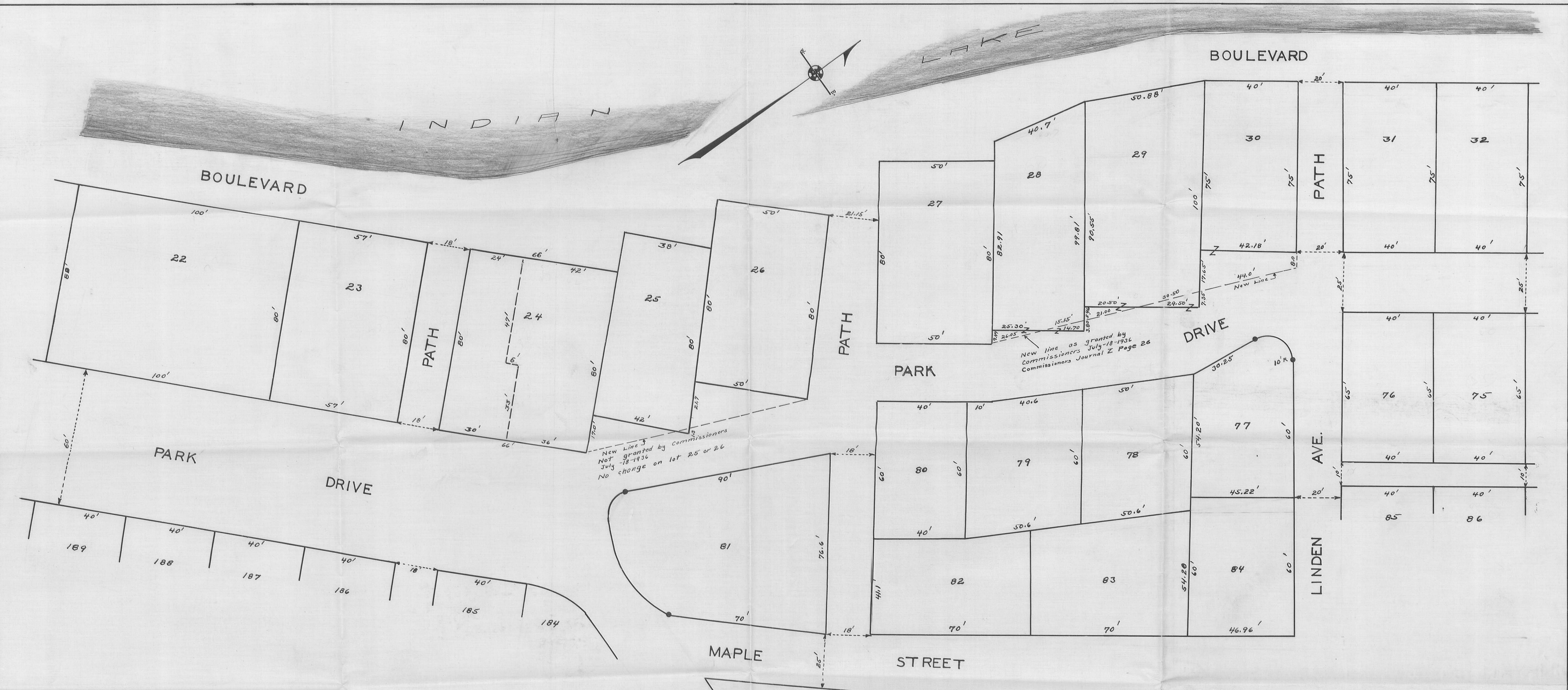
INDEXED ON



Buildings Approx scale.
Field Notes Logan County Surveyor's
Book 549 pgs 40-44-45
Surveyed Feb-6-1931 and July-18-1934
A. F. Wright C.E.

File 1P
1121 1253
INDEXED ON MAP

LOTS 27-28-29-30
WATERBURY ALLOTMENT
WASHINGTON TOWNSHIP
LOGAN COUNTY OHIO
1934
1" = 20'



Viewed by Commissioners July 1, 1936
 Hearing by Commissioners July 6, 1936

See Print J-1
 See Book 549
 Surveyed July 3-1936 by F.F. Wright
 Drawn July 5-1936 by F.F. Wright



1121
 INDEXED ON MAP

CHANGE OF LINE ON PARK DRIVE
 WATERBURY ALOTMENT
 WASHINGTON TOWNSHIP
 LOGAN COUNTY OHIO
 ONE INCH TO TWENTY FEET

1936